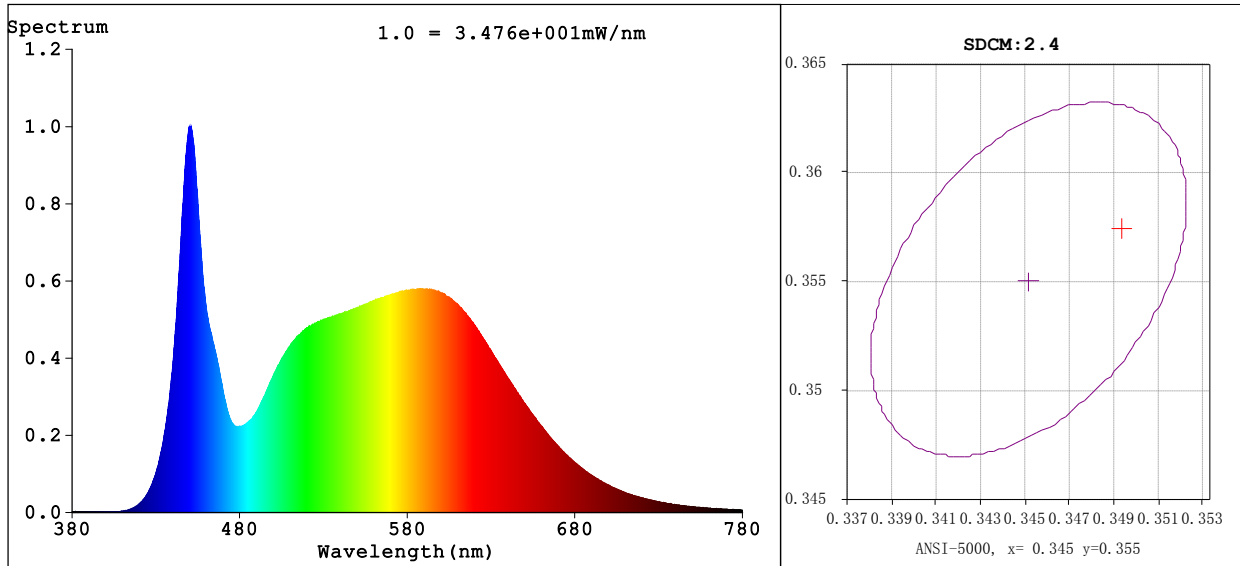


**Spectrum Test Report**



**Colorimetric Parameters**

Chromaticity Coordinate:  $x=0.3489$   $y=0.3575$  /  $u'=0.2117$   $v'=0.4881$   $Dx, Dy: 0.0003, 0.0031$

CCT=4879K (Duv=0.0014) Dominant WL:Ld =572.8nm Purity=12.0%

Peak WL:Lp=451.1nm FWHM=19.1nm

Render Index:Ra=84.3 Render Index:AvgR =77.6

R1 =83 R2 =89 R3 =93 R4 =84 R5 =83 R6 =84 R7 =88

R8 =70 R9 =15 R10=74 R11=83 R12=58 R13=85 R14=97 R15=78

**Photometric & Radiometric Parameters**

Flux=1275 lm Eff.:81.10 lm/W Fe=3.967 W

**Electrical parameters**

V=120.0 V I=0.1536 A P=15.72 W PF=0.8526 F=59.99 Hz

频率=59.99 Hz

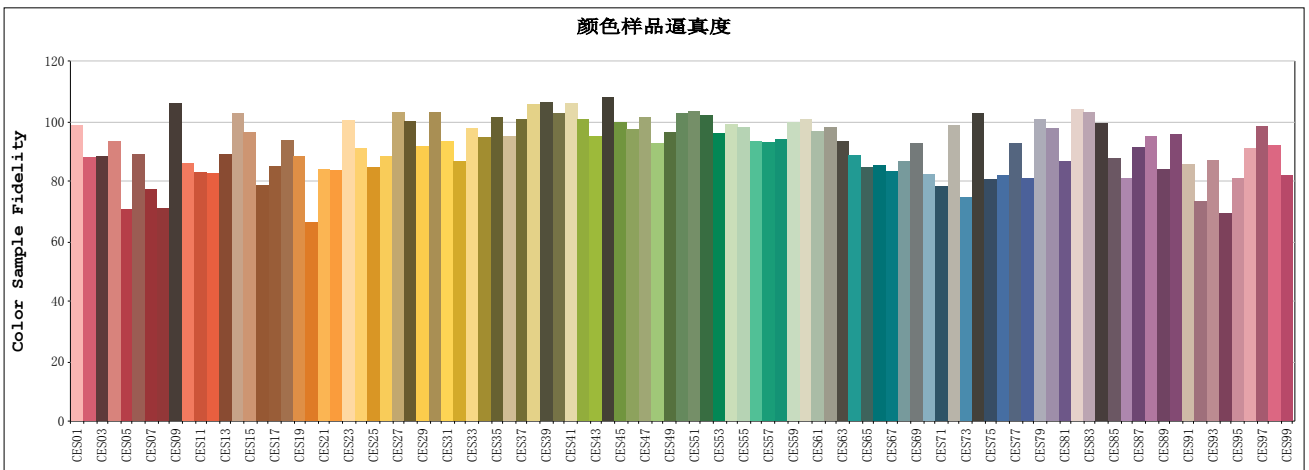
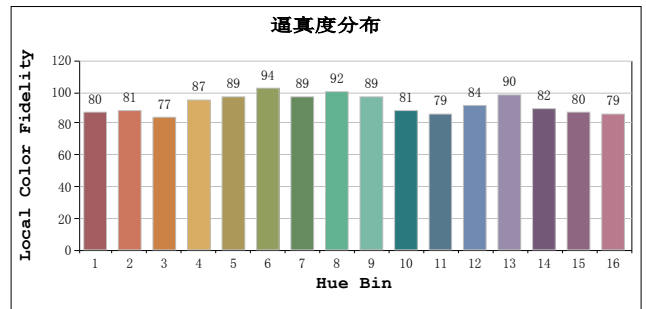
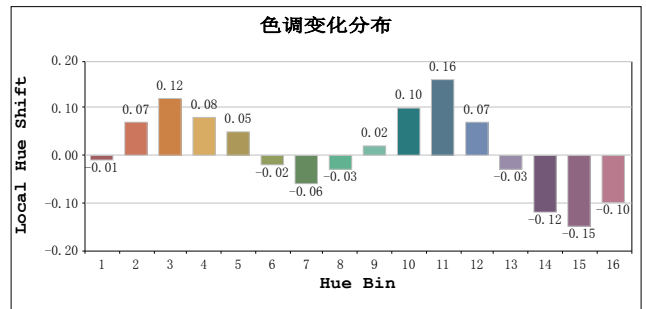
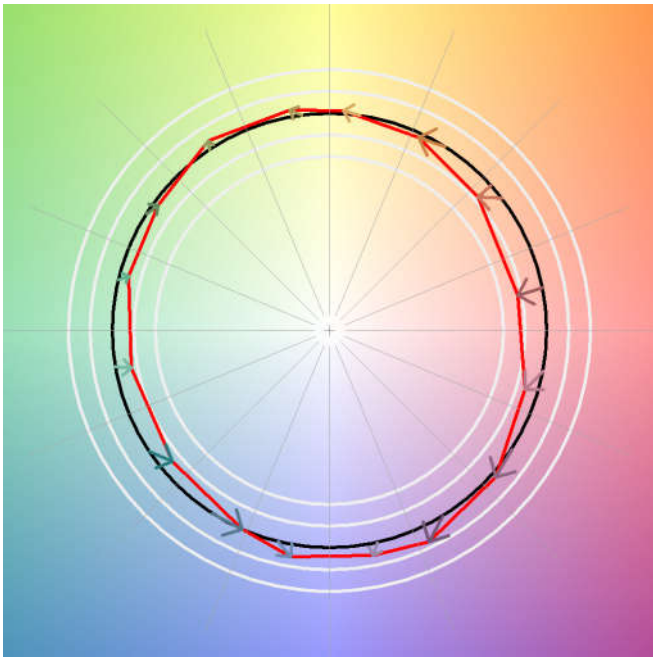
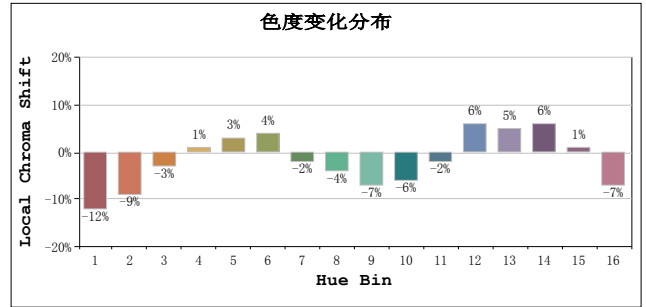
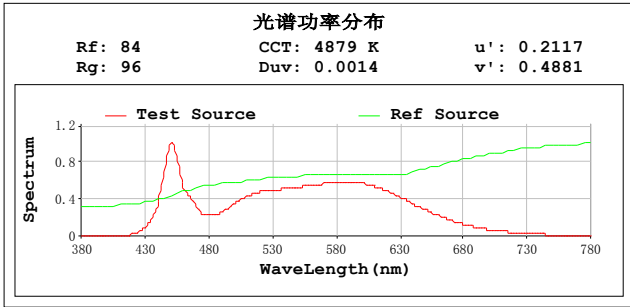
Status: Integral T = 454 ms Ip = 52013 (79%)

Test Mode: Fast Test; Sensitivity = High; Tecool: ON

Model:  
Test By:DAMIN  
Temperature:25.3Deg  
Manufacturer:EVERFINE  
Assessor:damin

Number:2  
Date:2020-07-09 15:46:54  
Humidity:65.0%  
Remarks:

# TM30



## All Rf:

Rf1 = 90.5	Rf2 = 80.7	Rf3 = 80.9
Rf4 = 85.7	Rf5 = 64.9	Rf6 = 81.6
Rf7 = 70.8	Rf8 = 65.3	Rf9 = 97.4
Rf10 = 78.9	Rf11 = 76.0	Rf12 = 76.0
Rf13 = 81.7	Rf14 = 94.0	Rf15 = 88.3
Rf16 = 72.3	Rf17 = 78.1	Rf18 = 86.0
Rf19 = 81.2	Rf20 = 60.9	Rf21 = 77.2
Rf22 = 76.7	Rf23 = 92.2	Rf24 = 83.4
Rf25 = 77.8	Rf26 = 81.1	Rf27 = 94.5
Rf28 = 91.8	Rf29 = 84.1	Rf30 = 94.6
Rf31 = 85.8	Rf32 = 79.7	Rf33 = 89.7
Rf34 = 87.0	Rf35 = 92.9	Rf36 = 87.1
Rf37 = 92.5	Rf38 = 97.1	Rf39 = 97.5
Rf40 = 94.3	Rf41 = 97.3	Rf42 = 92.4
Rf43 = 87.1	Rf44 = 99.3	Rf45 = 91.6
Rf46 = 89.2	Rf47 = 93.1	Rf48 = 85.2
Rf49 = 88.3	Rf50 = 94.2	Rf51 = 94.9
Rf52 = 93.6	Rf53 = 88.0	Rf54 = 90.8
Rf55 = 90.0	Rf56 = 85.6	Rf57 = 85.3
Rf58 = 86.1	Rf59 = 91.6	Rf60 = 92.5
Rf61 = 88.7	Rf62 = 90.1	Rf63 = 85.7
Rf64 = 81.3	Rf65 = 77.6	Rf66 = 78.3
Rf67 = 76.5	Rf68 = 79.7	Rf69 = 85.0
Rf70 = 75.4	Rf71 = 71.9	Rf72 = 90.4
Rf73 = 68.5	Rf74 = 94.2	Rf75 = 74.1
Rf76 = 75.4	Rf77 = 85.1	Rf78 = 74.3
Rf79 = 92.4	Rf80 = 89.8	Rf81 = 79.5
Rf82 = 95.3	Rf83 = 94.7	Rf84 = 91.1
Rf85 = 80.3	Rf86 = 74.3	Rf87 = 83.9
Rf88 = 87.1	Rf89 = 77.3	Rf90 = 87.8
Rf91 = 78.5	Rf92 = 67.2	Rf93 = 80.0
Rf94 = 63.6	Rf95 = 74.5	Rf96 = 83.4
Rf97 = 90.2	Rf98 = 84.6	Rf99 = 75.4