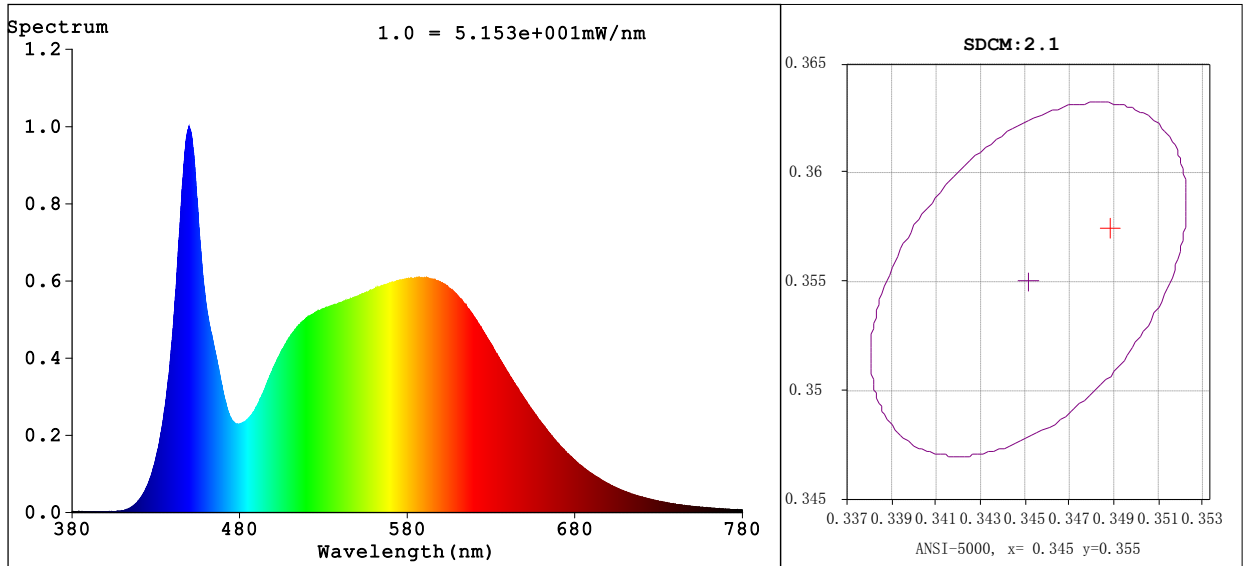


Spectrum Test Report



Colorimetric Parameters

Chromaticity Coordinate: $x=0.3484$ $y=0.3575$ $u'=0.2114$ $v'=0.4880$ $Dx, Dy: 0.0004, 0.0035$

CCT=4898K (Duv=0.0016) Dominant WL:Ld =572.4nm Purity=11.8%

Peak WL:Lp=449.8nm FWHM=20.8nm

Render Index:Ra=83.8 Render Index:AvgR =77.0

R1 =82 R2 =89 R3 =93 R4 =84 R5 =82 R6 =84 R7 =88

R8 =69 R9 =13 R10=72 R11=83 R12=59 R13=84 R14=96 R15=77

Photometric & Radiometric Parameters

Flux=1988 lm Eff.:78.23 lm/W Fe=6.180 W

Electrical parameters

V=120.0 V I=0.2609 A P=25.41 W PF=0.8116 F=59.98 Hz

频率=59.98 Hz

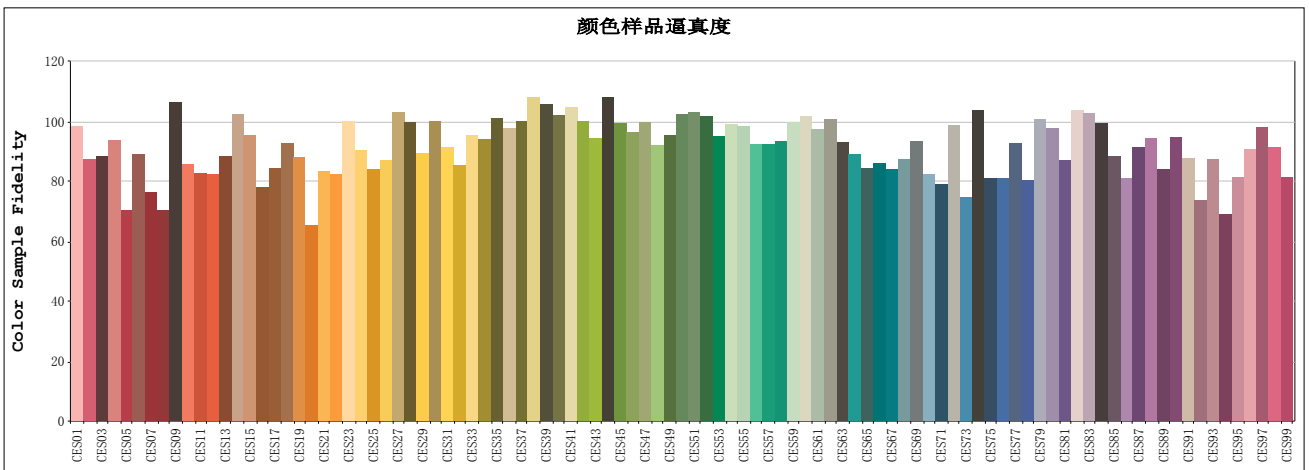
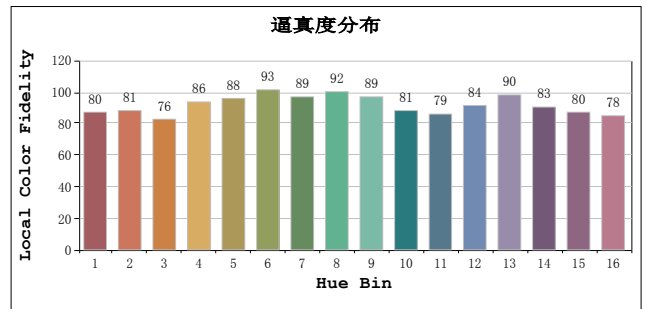
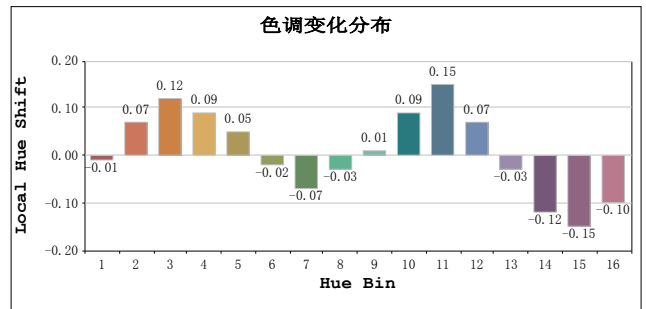
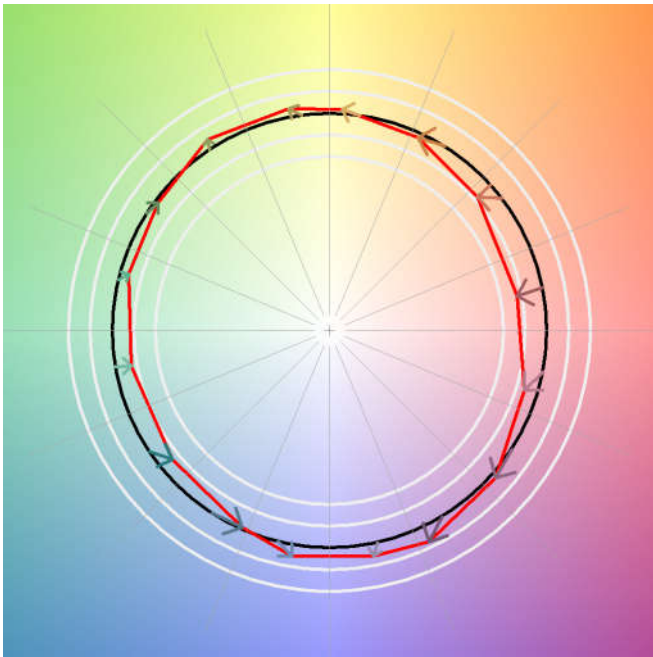
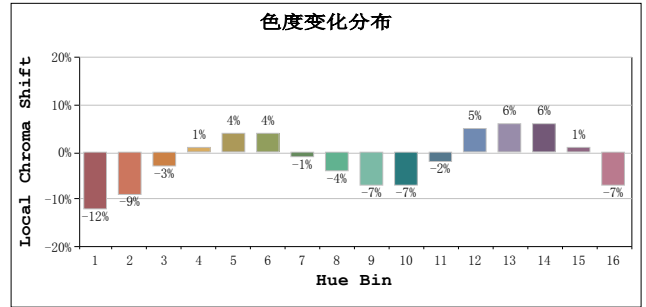
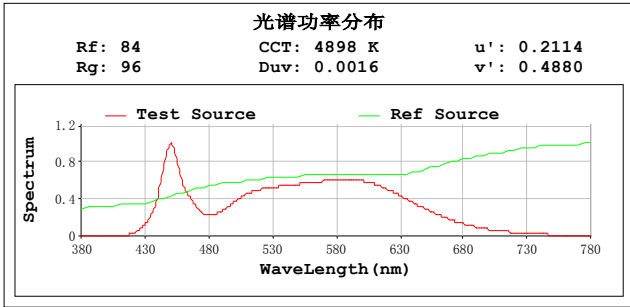
Status: Integral T = 322 ms Ip = 53680 (82%)

Test Mode: Fast Test; Sensitivity = High; Tecool: ON

Model:
Test By:DAMIN
Temperature:25.3Deg
Manufacturer:EVERFINE
Assessor:damin

Number:2
Date:2020-07-09 17:01:09
Humidity:65.0%
Remarks:

TM30



All Rf:

Rf1 = 90.3	Rf2 = 80.2	Rf3 = 80.9
Rf4 = 86.0	Rf5 = 64.6	Rf6 = 81.5
Rf7 = 70.2	Rf8 = 64.7	Rf9 = 97.6
Rf10 = 78.6	Rf11 = 75.9	Rf12 = 75.6
Rf13 = 81.0	Rf14 = 93.8	Rf15 = 87.5
Rf16 = 71.4	Rf17 = 77.4	Rf18 = 85.1
Rf19 = 80.6	Rf20 = 59.9	Rf21 = 76.4
Rf22 = 75.5	Rf23 = 91.6	Rf24 = 82.8
Rf25 = 77.2	Rf26 = 80.0	Rf27 = 94.5
Rf28 = 91.4	Rf29 = 81.9	Rf30 = 91.8
Rf31 = 83.9	Rf32 = 78.4	Rf33 = 87.4
Rf34 = 86.3	Rf35 = 92.6	Rf36 = 89.7
Rf37 = 91.9	Rf38 = 99.0	Rf39 = 97.1
Rf40 = 93.7	Rf41 = 95.9	Rf42 = 91.8
Rf43 = 86.4	Rf44 = 99.2	Rf45 = 91.0
Rf46 = 88.5	Rf47 = 91.4	Rf48 = 84.4
Rf49 = 87.6	Rf50 = 93.8	Rf51 = 94.7
Rf52 = 93.4	Rf53 = 87.3	Rf54 = 90.7
Rf55 = 90.3	Rf56 = 84.9	Rf57 = 84.7
Rf58 = 85.6	Rf59 = 91.5	Rf60 = 93.3
Rf61 = 89.2	Rf62 = 92.4	Rf63 = 85.5
Rf64 = 81.8	Rf65 = 77.4	Rf66 = 79.0
Rf67 = 77.2	Rf68 = 80.1	Rf69 = 85.7
Rf70 = 75.4	Rf71 = 72.6	Rf72 = 90.6
Rf73 = 68.4	Rf74 = 95.2	Rf75 = 74.2
Rf76 = 74.5	Rf77 = 85.2	Rf78 = 73.7
Rf79 = 92.3	Rf80 = 89.7	Rf81 = 79.9
Rf82 = 95.3	Rf83 = 94.2	Rf84 = 91.2
Rf85 = 81.1	Rf86 = 74.3	Rf87 = 83.8
Rf88 = 86.5	Rf89 = 77.1	Rf90 = 86.9
Rf91 = 80.5	Rf92 = 67.6	Rf93 = 80.3
Rf94 = 63.3	Rf95 = 74.7	Rf96 = 83.1
Rf97 = 89.9	Rf98 = 83.9	Rf99 = 74.6