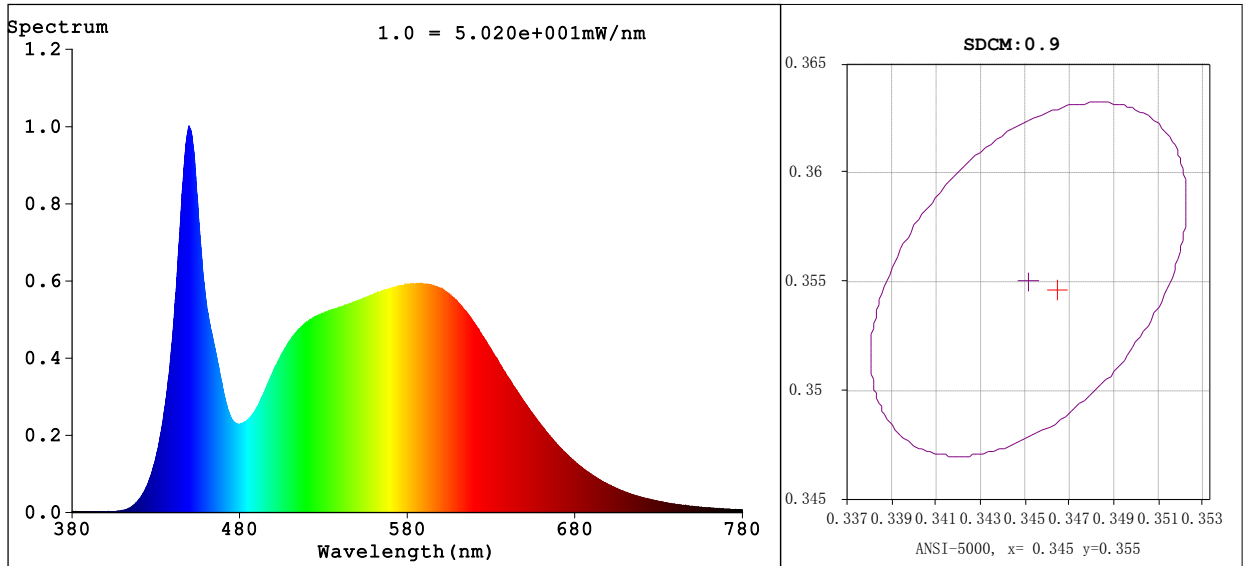


**Spectrum Test Report**



**Colorimetric Parameters**

Chromaticity Coordinate:  $x=0.3460$   $y=0.3547$   $u'=0.2108$   $v'=0.4863$   $Dx, Dy: 0.0002, 0.0026$

CCT=4976K (Duv=0.0012) Dominant WL:Ld =571.9nm Purity=10.3%

Peak WL:Lp=449.8nm FWHM=20.9nm

Render Index:Ra=84.0 Render Index:AvgR =77.1

R1 =83 R2 =89 R3 =93 R4 =84 R5 =83 R6 =84 R7 =88

R8 =70 R9 =13 R10=73 R11=83 R12=59 R13=84 R14=96 R15=77

**Photometric & Radiometric Parameters**

Flux=1891 lm Eff.:75.05 lm/W Fe=5.908 W

**Electrical parameters**

V=120.0 V I=0.2583 A P=25.20 W PF=0.8130 F=59.98 Hz

频率=59.98 Hz

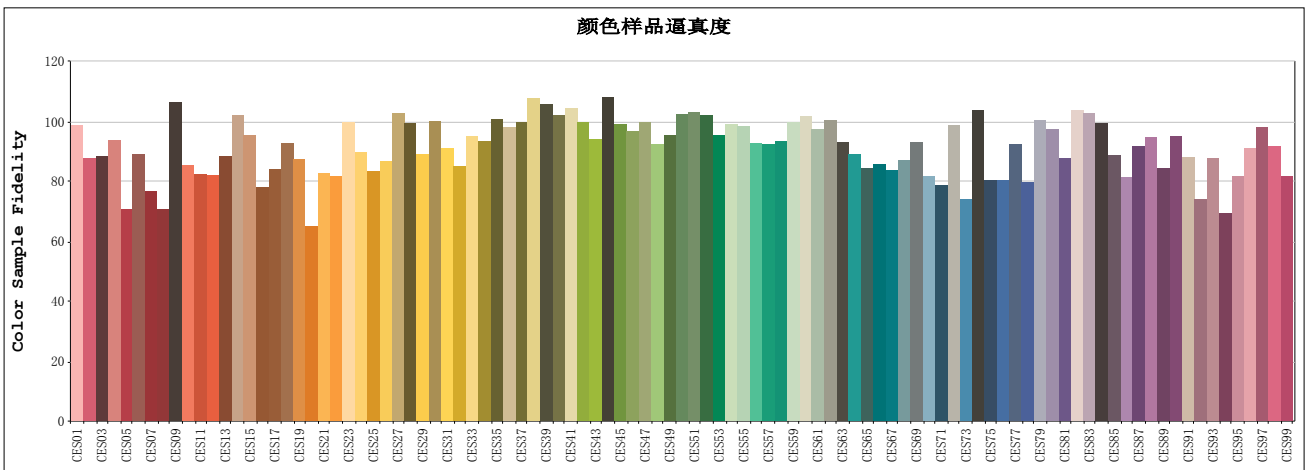
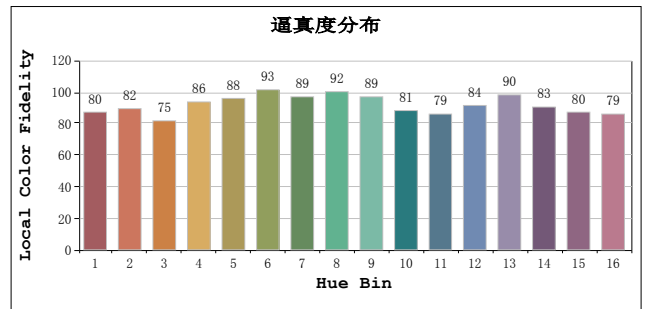
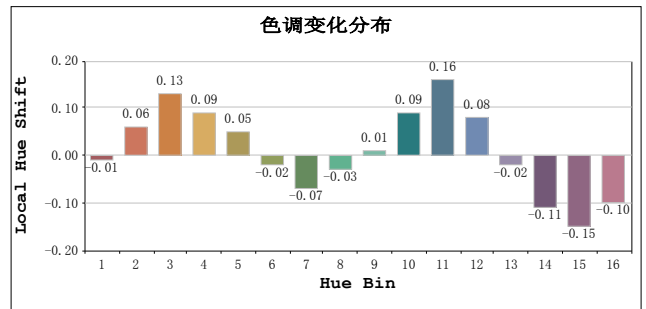
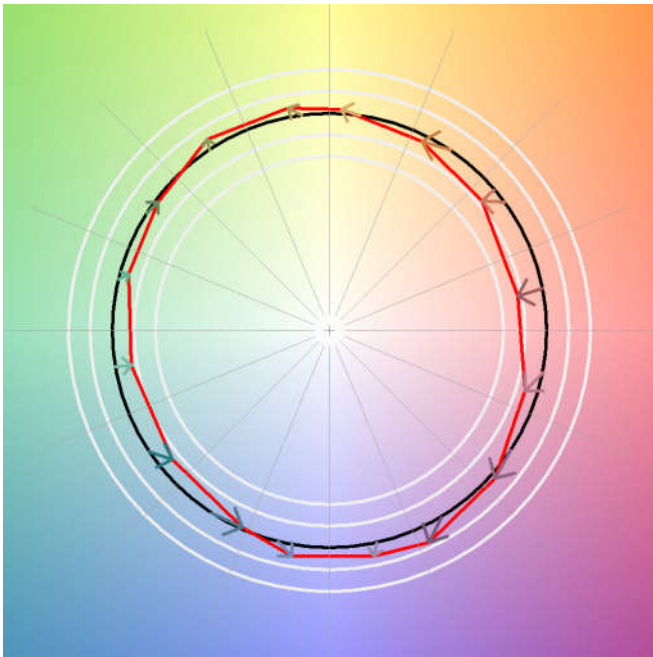
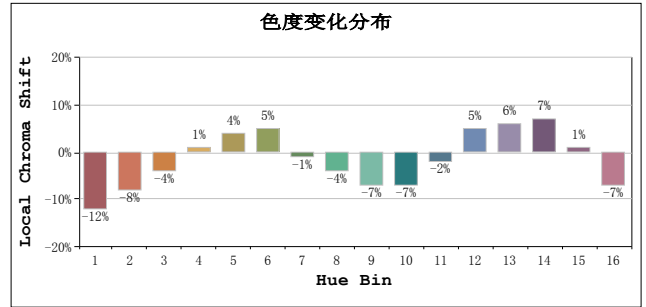
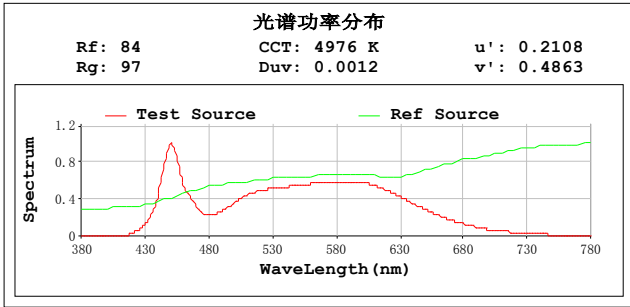
Status: Integral T = 322 ms Ip = 52436 (80%)

Test Mode: Fast Test; Sensitivity = High; Tecool: ON

Model:  
Test By:DAMIN  
Temperature:25.3Deg  
Manufacturer:EVERFINE  
Assessor:damin

Number:2  
Date:2020-07-09 16:52:44  
Humidity:65.0%  
Remarks:

# TM30



## All Rf:

Rf1 = 90.5	Rf2 = 80.4	Rf3 = 81.2
Rf4 = 85.9	Rf5 = 64.8	Rf6 = 81.6
Rf7 = 70.4	Rf8 = 65.0	Rf9 = 97.6
Rf10 = 78.4	Rf11 = 75.6	Rf12 = 75.4
Rf13 = 81.1	Rf14 = 93.7	Rf15 = 87.6
Rf16 = 71.5	Rf17 = 77.3	Rf18 = 85.1
Rf19 = 80.2	Rf20 = 59.5	Rf21 = 75.9
Rf22 = 75.1	Rf23 = 91.4	Rf24 = 82.3
Rf25 = 76.6	Rf26 = 79.5	Rf27 = 94.4
Rf28 = 91.1	Rf29 = 81.5	Rf30 = 91.6
Rf31 = 83.5	Rf32 = 77.9	Rf33 = 87.2
Rf34 = 85.8	Rf35 = 92.3	Rf36 = 89.8
Rf37 = 91.5	Rf38 = 98.8	Rf39 = 97.0
Rf40 = 93.6	Rf41 = 95.9	Rf42 = 91.4
Rf43 = 86.1	Rf44 = 99.2	Rf45 = 91.0
Rf46 = 88.6	Rf47 = 91.3	Rf48 = 84.8
Rf49 = 87.6	Rf50 = 93.9	Rf51 = 94.7
Rf52 = 93.5	Rf53 = 87.4	Rf54 = 90.9
Rf55 = 90.4	Rf56 = 85.0	Rf57 = 84.9
Rf58 = 85.8	Rf59 = 91.5	Rf60 = 93.2
Rf61 = 89.1	Rf62 = 92.2	Rf63 = 85.3
Rf64 = 81.6	Rf65 = 77.4	Rf66 = 78.7
Rf67 = 76.8	Rf68 = 79.7	Rf69 = 85.3
Rf70 = 75.0	Rf71 = 72.1	Rf72 = 90.4
Rf73 = 67.9	Rf74 = 95.3	Rf75 = 73.8
Rf76 = 73.8	Rf77 = 84.8	Rf78 = 73.1
Rf79 = 92.1	Rf80 = 89.4	Rf81 = 80.4
Rf82 = 95.2	Rf83 = 94.2	Rf84 = 91.3
Rf85 = 81.4	Rf86 = 74.8	Rf87 = 84.0
Rf88 = 86.7	Rf89 = 77.5	Rf90 = 87.2
Rf91 = 80.6	Rf92 = 67.9	Rf93 = 80.5
Rf94 = 63.7	Rf95 = 75.0	Rf96 = 83.4
Rf97 = 90.0	Rf98 = 84.2	Rf99 = 74.9