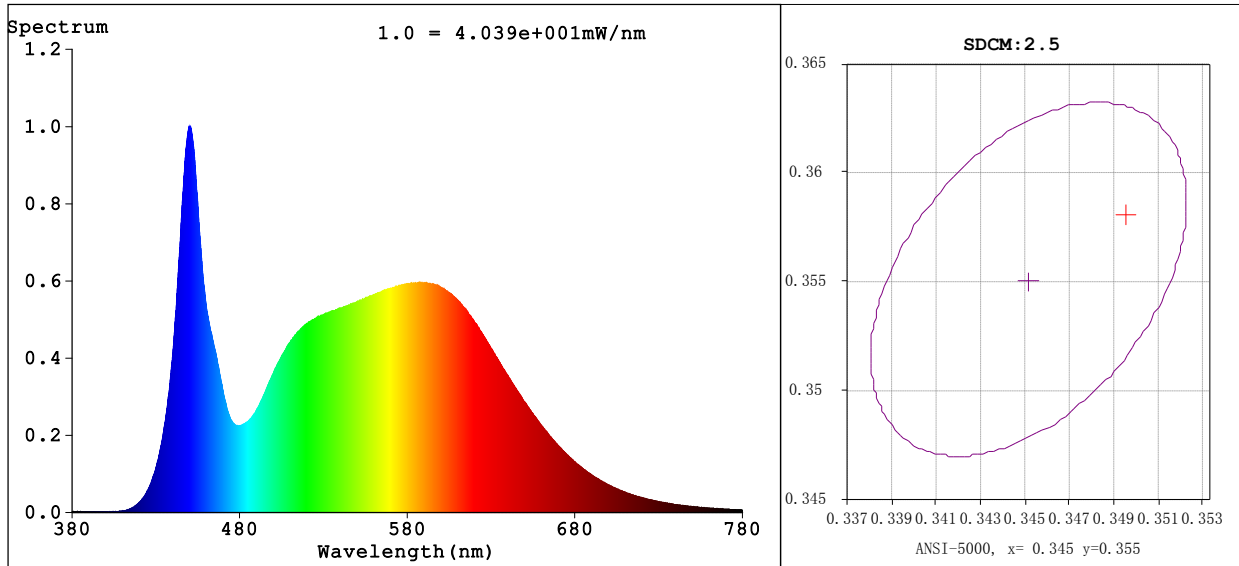


Spectrum Test Report



Colorimetric Parameters

Chromaticity Coordinate: $x=0.3491$ $y=0.3581$ / $u'=0.2116$ $v'=0.4884$ $Dx, Dy: 0.0003, 0.0036$

CCT=4874K (Duv=0.0017) Dominant WL:Ld =572.6nm Purity=12.2%

Peak WL:Lp=450.4nm FWHM=19.9nm

Render Index:Ra=83.8 Render Index:AvgR =76.9

R1 =82 R2 =89 R3 =93 R4 =83 R5 =82 R6 =84 R7 =88

R8 =69 R9 =12 R10=73 R11=82 R12=58 R13=84 R14=96 R15=77

Photometric & Radiometric Parameters

Flux=1520 lm Eff.:76.11 lm/W Fe=4.714 W

Electrical parameters

V=120.0 V I=0.2013 A P=19.97 W PF=0.8266 F=59.98 Hz

频率=59.98 Hz

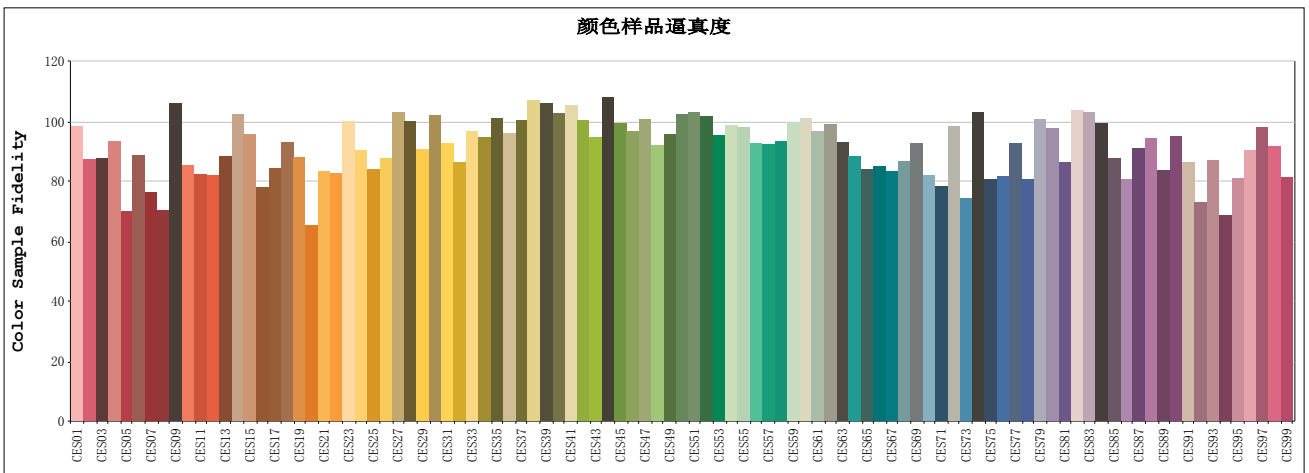
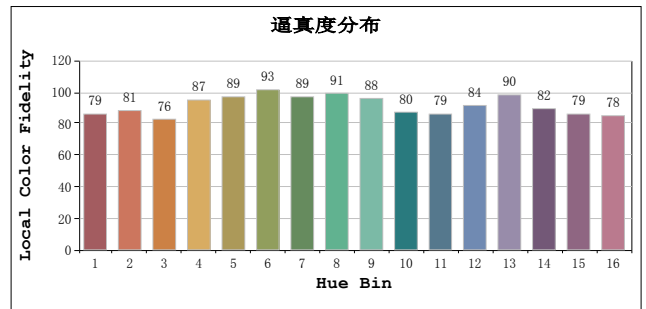
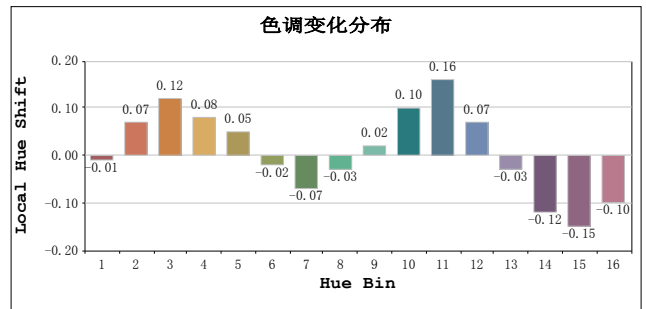
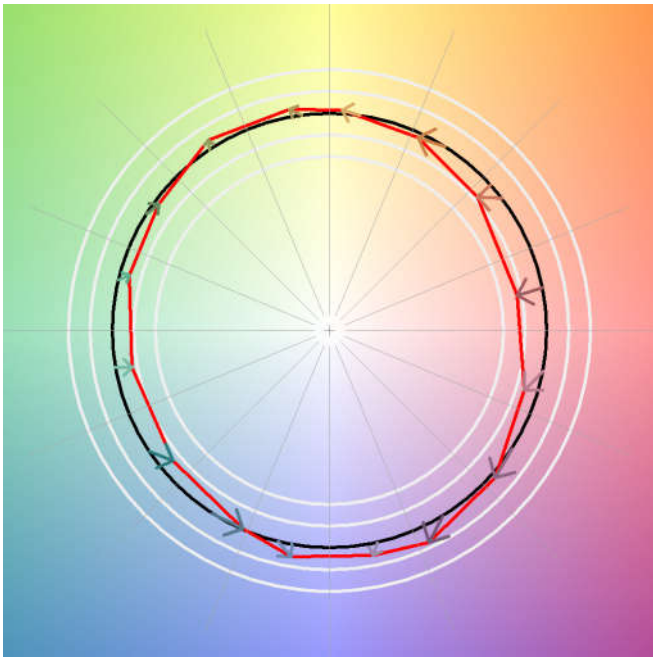
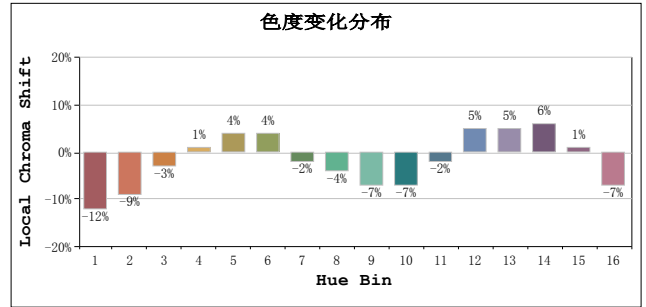
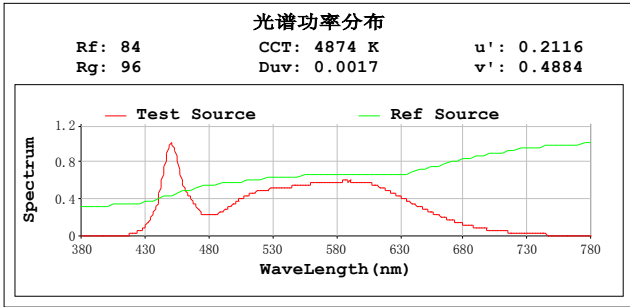
Status: Integral T = 374 ms Ip = 51548 (79%)

Test Mode: Fast Test; Sensitivity = High; Tecool: ON

Model:
Test By:DAMIN
Temperature:25.3Deg
Manufacturer:EVERFINE
Assessor:damin

Number:2
Date:2020-07-09 16:21:43
Humidity:65.0%
Remarks:

TM30



All Rf:

Rf1 = 90.2	Rf2 = 80.1	Rf3 = 80.6
Rf4 = 85.5	Rf5 = 64.2	Rf6 = 81.3
Rf7 = 70.0	Rf8 = 64.5	Rf9 = 97.4
Rf10 = 78.4	Rf11 = 75.6	Rf12 = 75.4
Rf13 = 81.1	Rf14 = 93.8	Rf15 = 87.7
Rf16 = 71.6	Rf17 = 77.6	Rf18 = 85.4
Rf19 = 80.7	Rf20 = 60.1	Rf21 = 76.6
Rf22 = 75.9	Rf23 = 91.9	Rf24 = 83.0
Rf25 = 77.3	Rf26 = 80.5	Rf27 = 94.5
Rf28 = 91.6	Rf29 = 83.2	Rf30 = 93.6
Rf31 = 85.0	Rf32 = 79.1	Rf33 = 88.8
Rf34 = 86.7	Rf35 = 92.8	Rf36 = 88.0
Rf37 = 92.2	Rf38 = 98.3	Rf39 = 97.4
Rf40 = 94.1	Rf41 = 96.8	Rf42 = 92.2
Rf43 = 86.8	Rf44 = 99.3	Rf45 = 91.2
Rf46 = 88.8	Rf47 = 92.5	Rf48 = 84.6
Rf49 = 87.9	Rf50 = 93.9	Rf51 = 94.7
Rf52 = 93.3	Rf53 = 87.4	Rf54 = 90.5
Rf55 = 89.9	Rf56 = 85.0	Rf57 = 84.8
Rf58 = 85.6	Rf59 = 91.3	Rf60 = 92.7
Rf61 = 88.7	Rf62 = 90.8	Rf63 = 85.4
Rf64 = 81.1	Rf65 = 77.1	Rf66 = 78.1
Rf67 = 76.3	Rf68 = 79.6	Rf69 = 85.1
Rf70 = 75.1	Rf71 = 71.8	Rf72 = 90.4
Rf73 = 68.2	Rf74 = 94.6	Rf75 = 73.9
Rf76 = 74.9	Rf77 = 85.0	Rf78 = 74.0
Rf79 = 92.3	Rf80 = 89.7	Rf81 = 79.4
Rf82 = 95.3	Rf83 = 94.5	Rf84 = 91.0
Rf85 = 80.4	Rf86 = 73.9	Rf87 = 83.6
Rf88 = 86.5	Rf89 = 76.9	Rf90 = 87.2
Rf91 = 79.1	Rf92 = 66.9	Rf93 = 79.8
Rf94 = 63.0	Rf95 = 74.2	Rf96 = 83.0
Rf97 = 89.9	Rf98 = 84.0	Rf99 = 74.6