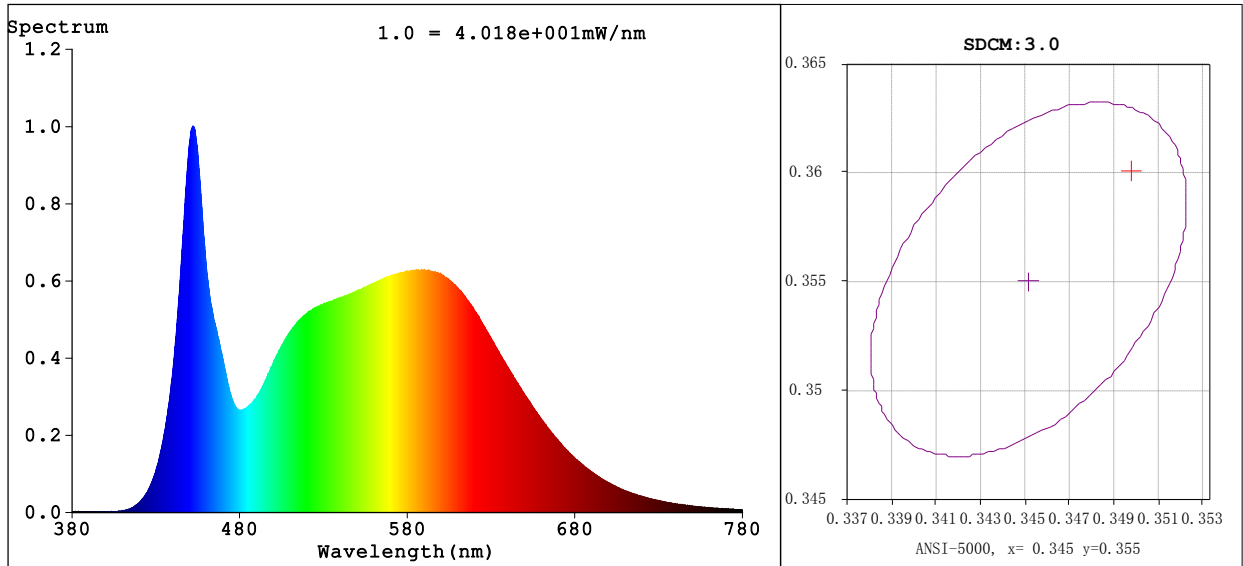


**Spectrum Test Report**



**Colorimetric Parameters**

Chromaticity Coordinate:  $x=0.3493$   $y=0.3601$  /  $u'=0.2110$   $v'=0.4894$   
 CCT=4874K (Duv=0.0025) Dominant WL:Ld =572.0nm Purity=12.9%  
 Peak WL:Lp=452.1nm FWHM=22.0nm  
 Render Index:Ra=84.4 Render Index:AvgR =77.7  
 R1 =83 R2 =90 R3 =95 R4 =83 R5 =83 R6 =85 R7 =88  
 R8 =69 R9 =14 R10=76 R11=82 R12=58 R13=85 R14=97 R15=77

**Photometric & Radiometric Parameters**

Flux=1598 lm Eff.:79.52 lm/W Fe=4.965 W

**Electrical parameters**

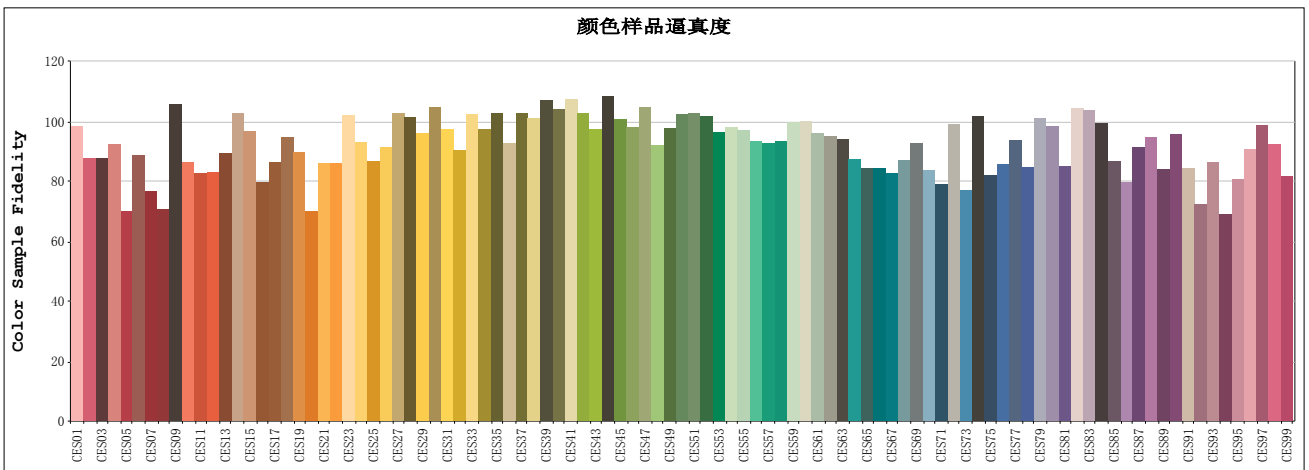
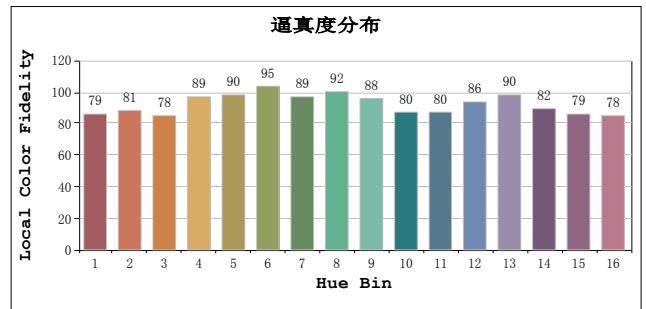
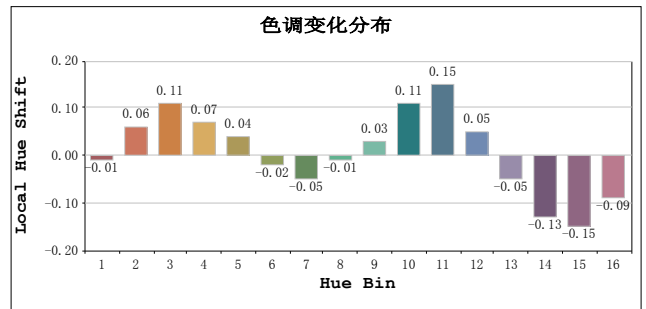
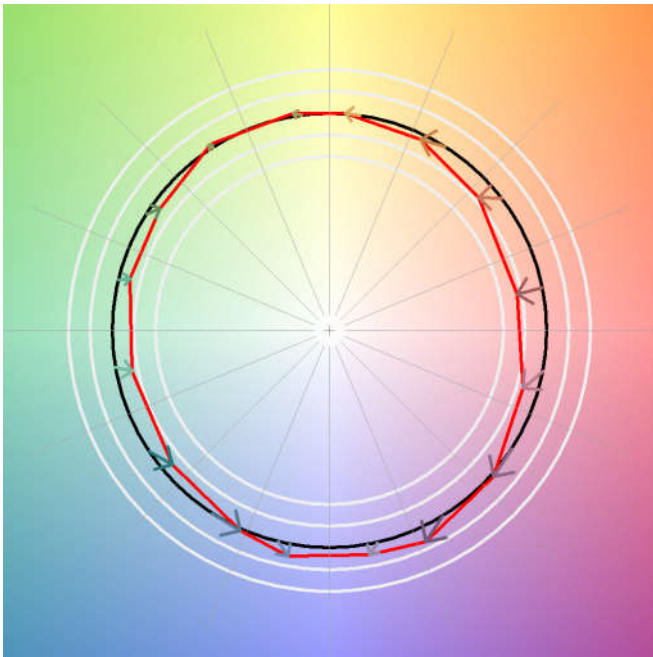
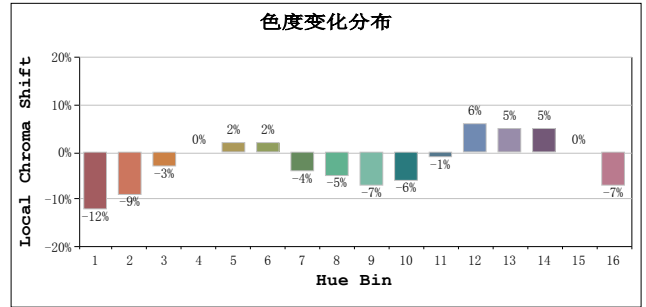
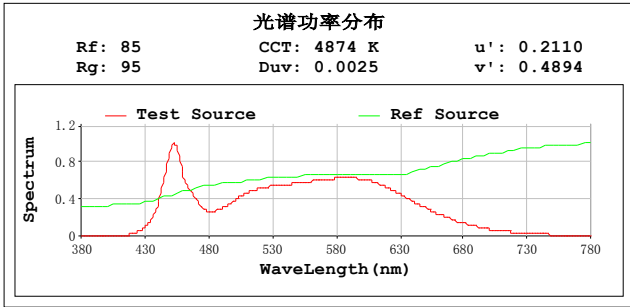
V=120.0 V I=0.2046 A P=20.10 W PF=0.8186 F=59.98 Hz  
 频率=59.98 Hz

Status: Integral T = 404 ms Ip = 51962 (79%)

Test Mode: Fast Test; Sensitivity = High; Tecool: ON

Model: Number:2  
 Test By:DAMIN Date:2020-09-09 17:21:52  
 Temperature:25.3Deg Humidity:65.0%  
 Manufacturer:EVERFINE Remarks:  
 Assessor:damin

# TM30



## All Rf:

Rf1 = 90.2	Rf2 = 80.4	Rf3 = 80.4
Rf4 = 84.9	Rf5 = 64.4	Rf6 = 81.4
Rf7 = 70.5	Rf8 = 65.0	Rf9 = 97.0
Rf10 = 79.1	Rf11 = 76.0	Rf12 = 76.0
Rf13 = 82.0	Rf14 = 94.4	Rf15 = 88.6
Rf16 = 73.2	Rf17 = 79.2	Rf18 = 86.8
Rf19 = 82.5	Rf20 = 64.2	Rf21 = 78.8
Rf22 = 78.8	Rf23 = 93.5	Rf24 = 85.3
Rf25 = 79.6	Rf26 = 83.7	Rf27 = 94.2
Rf28 = 93.0	Rf29 = 88.1	Rf30 = 95.9
Rf31 = 89.5	Rf32 = 82.9	Rf33 = 93.9
Rf34 = 89.4	Rf35 = 94.2	Rf36 = 85.0
Rf37 = 94.1	Rf38 = 92.7	Rf39 = 98.2
Rf40 = 95.6	Rf41 = 98.6	Rf42 = 94.4
Rf43 = 89.2	Rf44 = 99.3	Rf45 = 92.3
Rf46 = 89.9	Rf47 = 96.0	Rf48 = 84.6
Rf49 = 89.5	Rf50 = 94.0	Rf51 = 94.4
Rf52 = 93.4	Rf53 = 88.5	Rf54 = 90.1
Rf55 = 88.8	Rf56 = 85.6	Rf57 = 85.0
Rf58 = 85.7	Rf59 = 91.3	Rf60 = 91.6
Rf61 = 88.2	Rf62 = 87.3	Rf63 = 86.2
Rf64 = 80.3	Rf65 = 77.4	Rf66 = 77.5
Rf67 = 75.9	Rf68 = 80.0	Rf69 = 85.1
Rf70 = 76.6	Rf71 = 72.5	Rf72 = 90.7
Rf73 = 70.8	Rf74 = 93.2	Rf75 = 75.4
Rf76 = 78.6	Rf77 = 86.0	Rf78 = 77.6
Rf79 = 92.6	Rf80 = 90.4	Rf81 = 77.9
Rf82 = 95.7	Rf83 = 95.2	Rf84 = 91.1
Rf85 = 79.5	Rf86 = 73.1	Rf87 = 83.8
Rf88 = 86.8	Rf89 = 77.1	Rf90 = 87.8
Rf91 = 77.4	Rf92 = 66.4	Rf93 = 79.2
Rf94 = 63.2	Rf95 = 74.1	Rf96 = 83.3
Rf97 = 90.4	Rf98 = 84.7	Rf99 = 75.1