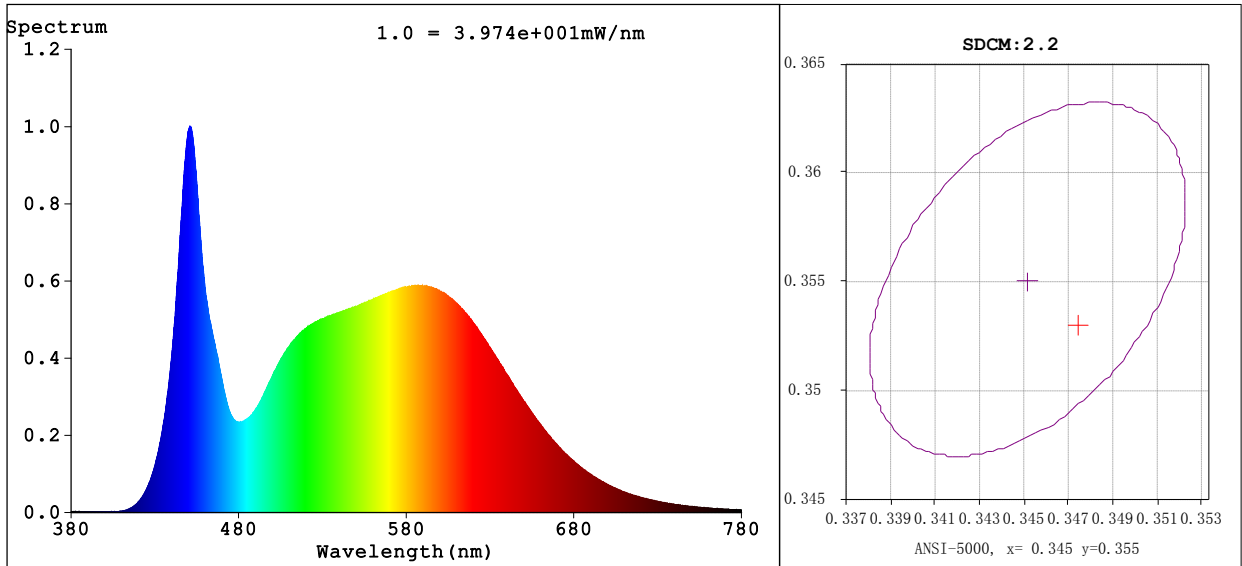


Spectrum Test Report



Colorimetric Parameters

Chromaticity Coordinate: $x=0.3470$ $y=0.3531$ / $u'=0.2121$ $v'=0.4857$
 CCT=4932K (Duv=-0.0000) Dominant WL:Ld =573.6nm Purity=10.1%
 Peak WL:Lp=450.8nm FWHM=20.9nm
 Render Index:Ra=84.8 Render Index:AvgR =78.4
 R1 =84 R2 =90 R3 =93 R4 =84 R5 =84 R6 =85 R7 =88
 R8 =71 R9 =18 R10=75 R11=83 R12=59 R13=86 R14=97 R15=79

Photometric & Radiometric Parameters

Flux=1472 lm Eff.:75.19 lm/W Fe=4.629 W

Electrical parameters

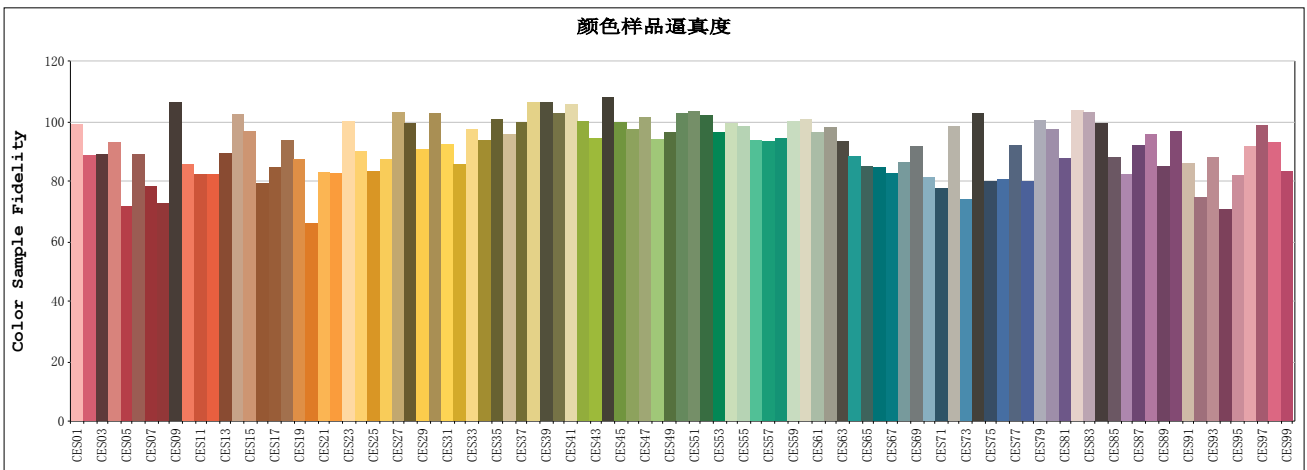
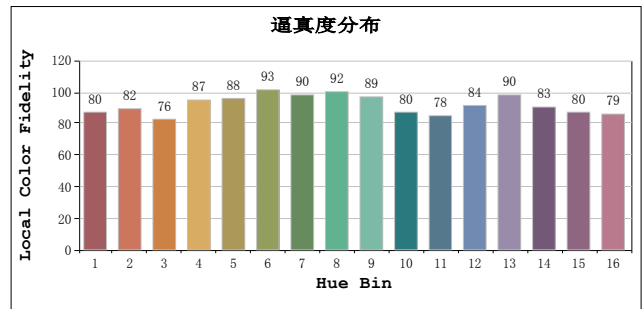
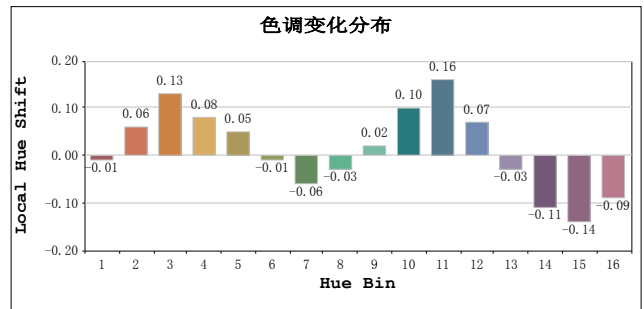
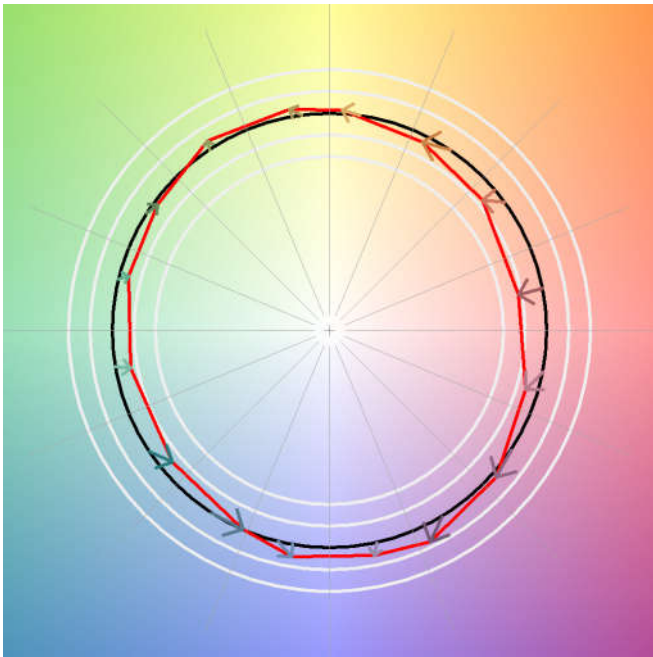
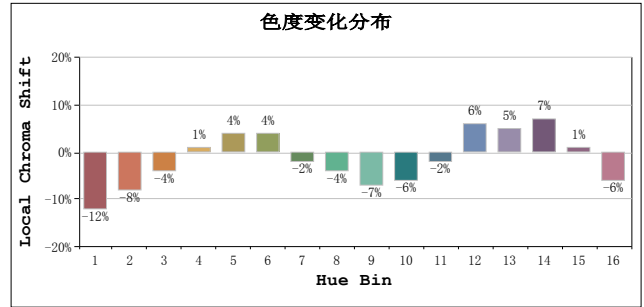
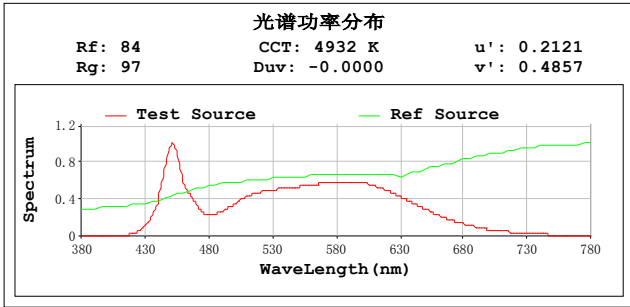
V=120.1 V I=0.1962 A P=19.58 W PF=0.8310 F=50.00 Hz
 频率=50.00 Hz

Status: Integral T = 352 ms Ip = 43585 (67%)

Test Mode: Fast Test; Sensitivity = High; Tecool: ON

Model: Number:2
 Test By:DAMIN Date:2020-09-28 16:06:52
 Temperature:25.3Deg Humidity:65.0%
 Manufacturer:EVERFINE Remarks:
 Assessor:damin

TM30



All Rf:

Rf1 = 90.9	Rf2 = 81.4	Rf3 = 81.6
Rf4 = 85.5	Rf5 = 65.9	Rf6 = 81.8
Rf7 = 71.9	Rf8 = 66.5	Rf9 = 97.6
Rf10 = 78.6	Rf11 = 75.5	Rf12 = 75.6
Rf13 = 82.1	Rf14 = 94.0	Rf15 = 88.6
Rf16 = 72.7	Rf17 = 77.7	Rf18 = 86.0
Rf19 = 80.2	Rf20 = 60.6	Rf21 = 76.1
Rf22 = 75.8	Rf23 = 91.8	Rf24 = 82.5
Rf25 = 76.6	Rf26 = 80.2	Rf27 = 94.5
Rf28 = 91.2	Rf29 = 83.2	Rf30 = 94.1
Rf31 = 84.9	Rf32 = 78.7	Rf33 = 89.2
Rf34 = 86.0	Rf35 = 92.3	Rf36 = 87.7
Rf37 = 91.6	Rf38 = 97.7	Rf39 = 97.5
Rf40 = 94.3	Rf41 = 97.1	Rf42 = 91.6
Rf43 = 86.6	Rf44 = 99.3	Rf45 = 91.5
Rf46 = 89.4	Rf47 = 92.9	Rf48 = 86.1
Rf49 = 88.4	Rf50 = 94.3	Rf51 = 94.7
Rf52 = 93.6	Rf53 = 88.4	Rf54 = 91.2
Rf55 = 90.2	Rf56 = 86.1	Rf57 = 85.8
Rf58 = 86.5	Rf59 = 91.7	Rf60 = 92.4
Rf61 = 88.5	Rf62 = 89.9	Rf63 = 85.6
Rf64 = 81.0	Rf65 = 77.9	Rf66 = 77.7
Rf67 = 75.9	Rf68 = 79.1	Rf69 = 84.3
Rf70 = 74.8	Rf71 = 71.3	Rf72 = 90.1
Rf73 = 67.8	Rf74 = 94.3	Rf75 = 73.5
Rf76 = 74.1	Rf77 = 84.4	Rf78 = 73.4
Rf79 = 92.1	Rf80 = 89.4	Rf81 = 80.5
Rf82 = 95.2	Rf83 = 94.6	Rf84 = 91.3
Rf85 = 80.9	Rf86 = 75.6	Rf87 = 84.4
Rf88 = 87.8	Rf89 = 78.1	Rf90 = 88.6
Rf91 = 79.0	Rf92 = 68.4	Rf93 = 80.7
Rf94 = 64.8	Rf95 = 75.4	Rf96 = 84.1
Rf97 = 90.4	Rf98 = 85.2	Rf99 = 76.5