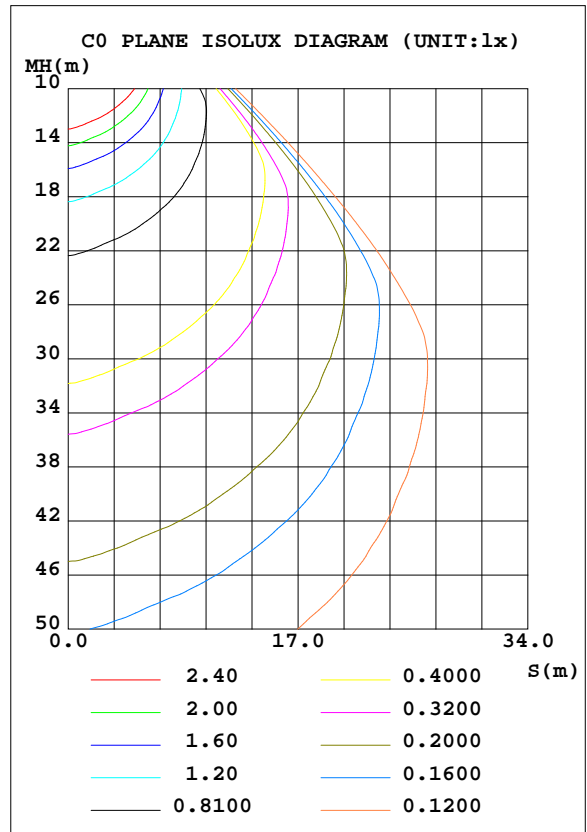
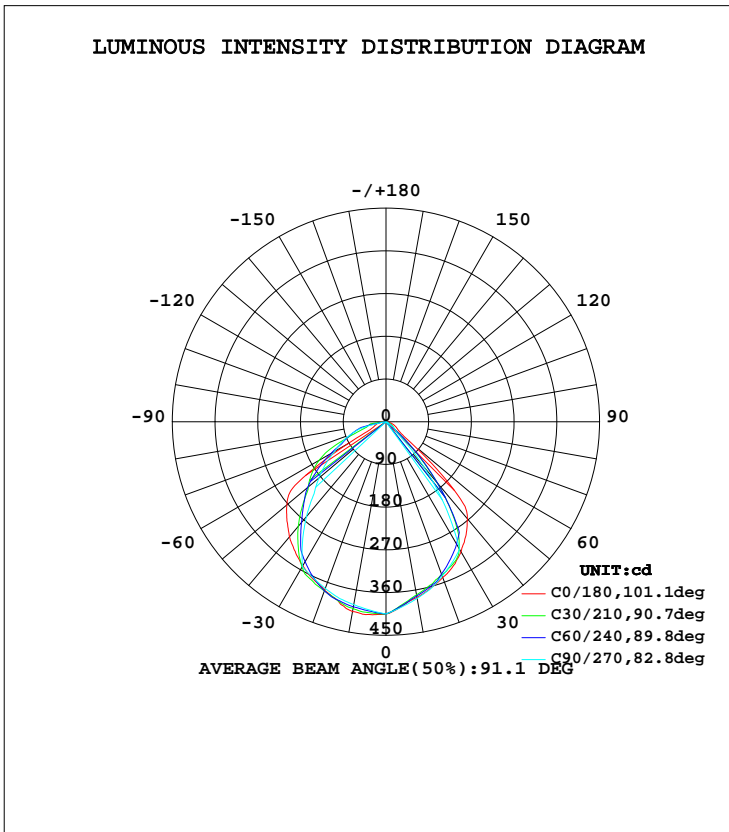


LUMINAIRE PHOTOMETRIC TEST REPORT

Test:U:120.0V I:0.0794A P:9.425W PF:0.9894 Lamp Flux:789.808x1 lm		
NAME: 一代单头安全灯	TYPE: 白色	WEIGHT:
SPEC.: 3000K	DIM.:	SERIAL No.:
MFR.: HLE	SUR.:	Shielding Angle:

DATA OF LAMP		PHOTOMETRIC DATA Eff: 83.80 lm/W			
MODEL	SS-DG70-10W-Q 3000K	Imax(cd)	408.5	S/MH(C0/180)	1.29
NOMINAL POWER(W)	10	LOR(%)	100.0	S/MH(C90/270)	1.26
RATED VOLTAGE(V)	120	TOTAL FLUX(lm)	789.81	η UP, DN(C0-180)	0.0, 39.3
NOMINAL FLUX(lm)	789.808	CIE CLASS	DIRECT	η UP, DN(C180-360)	0.0, 60.7
LAMPS INSIDE	1	η up(%)	0.0	CIBSE SHR NOM	1.25
TEST VOLTAGE(V)	120	η down(%)	100.0	CIBSE SHR MAX	1.25



C Range: 0 - 360DEG
C Interval: 5.0DEG
Test Speed: HIGH
Temperature: 27.3DEG
Operators: QC
Test Date: 2018-05-26

γ Range: 0 - 90DEG
 γ Interval: 0.5DEG
Test System: EVERFINE GO-2000B_V1 SYSTEM V2.0.295
Humidity: 65.0%
Test Distance: 9.983m [K=1.0000]
Remarks:

ZONAL FLUX DIAGRAM

ZONAL FLUX DIAGRAM:

γ	C0	C45	C90	C135	C180	C225	C270	C315	γ	Φ zone	Φ total	lum, lamp
5	390.3	387.3	391.4	398.5	407.5	402.1	398.1	391.1	0- 5	9.539	9.539	1.21,1.21
10	376.2	370.8	377.9	390.7	406.0	397.9	391.3	377.6	5- 10	27.90	37.44	4.74,4.74
15	362.8	357.1	364.3	379.7	390.5	391.2	384.4	369.0	10- 15	45.08	82.52	10.4,10.4
20	349.3	345.7	346.3	368.4	378.0	380.7	373.8	358.3	15- 20	60.63	143.1	18.1,18.1
25	335.4	323.3	328.3	350.5	365.3	364.1	363.1	343.6	20- 25	74.23	217.4	27.5,27.5
30	316.4	296.8	310.3	331.1	350.4	338.8	352.5	326.9	25- 30	85.44	302.8	38.3,38.3
35	293.5	250.5	217.5	314.0	333.7	306.7	306.5	310.4	30- 35	91.95	394.8	50,50
40	267.2	170.4	124.6	285.7	316.5	271.1	260.5	290.9	35- 40	90.06	484.8	61.4,61.4
45	201.7	85.31	31.71	198.7	295.1	240.5	214.5	252.3	40- 45	80.29	565.1	71.6,71.6
50	67.62	34.03	23.44	108.0	272.4	217.3	184.7	214.3	45- 50	65.54	630.7	79.8,79.8
55	32.58	14.55	15.17	20.29	234.2	193.7	154.9	176.4	50- 55	51.52	682.2	86.4,86.4
60	26.06	9.811	6.900	14.82	93.88	148.5	125.1	120.1	55- 60	37.67	719.8	91.1,91.1
65	20.89	5.240	4.668	10.03	32.78	104.2	102.4	65.11	60- 65	25.73	745.6	94.4,94.4
70	15.44	2.155	2.436	6.190	25.51	71.47	79.79	39.49	65- 70	18.44	764.0	96.7,96.7
75	10.34	1.042	0.2039	3.023	20.77	55.87	57.13	34.24	70- 75	13.91	777.9	98.5,98.5
80	4.763	0.1632	0	0.1745	16.21	35.49	0	24.01	75- 80	8.904	786.8	99.6,99.6
85	0.1705	0	0	0	11.23	0	0	0	80- 85	2.620	789.4	100,100
90	0.0987	0	0	0	0.0735	0	0	0	85- 90	0.3693	789.8	100,100
95									90- 95			
100									95-100			
105									100-105			
110									105-110			
115									110-115			
120									115-120			
125									120-125			
130									125-130			
135									130-135			
140									135-140			
145									140-145			
150									145-150			
155									150-155			
160									155-160			
165									160-165			
170									165-170			
175									170-175			
180									175-180			
DEG	LUMINOUS INTENSITY:cd								UNIT:lm			

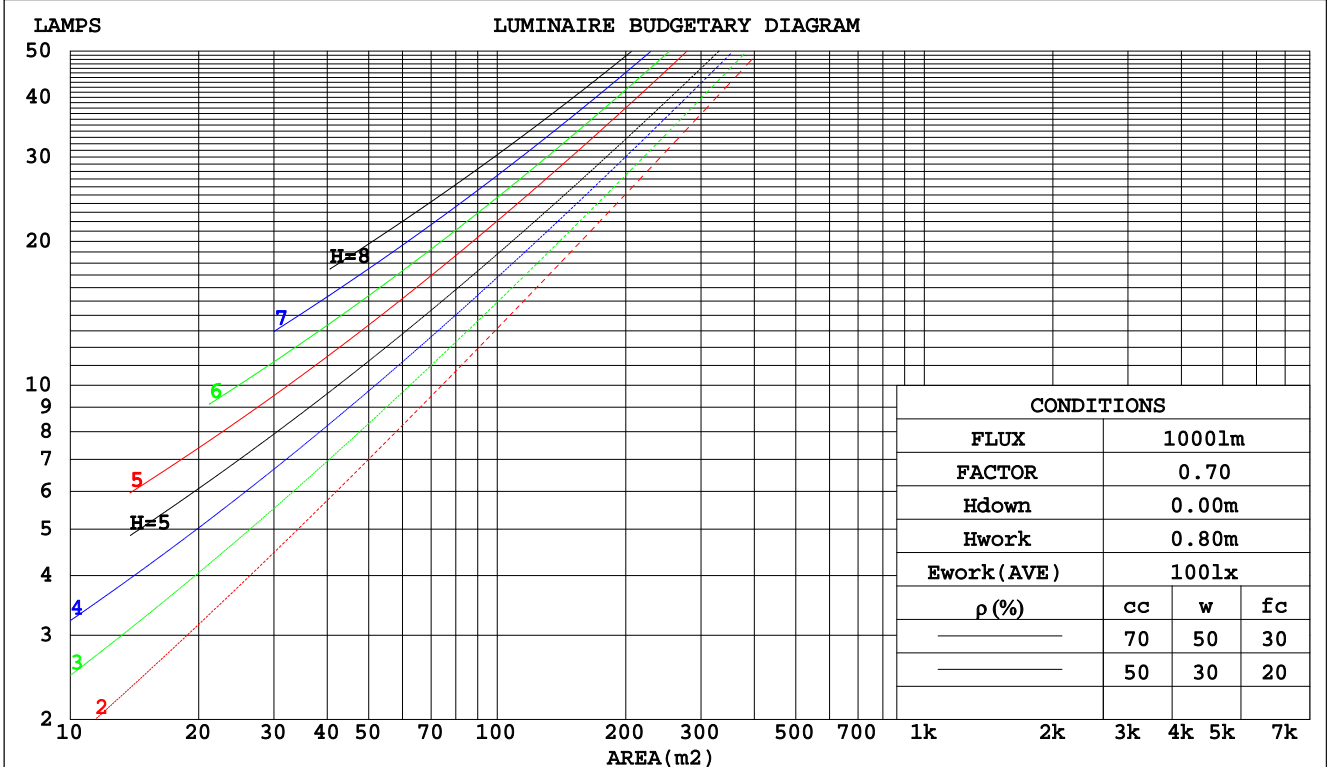
C Range: 0 - 360DEG
 C Interval: 5.0DEG
 Test Speed: HIGH
 Temperature:27.3DEG
 Operators:QC
 Test Date:2018-05-26

γ Range: 0 - 90DEG
 γ Interval: 0.5DEG
 Test System:EVERFINE GO-2000B_V1 SYSTEM V2.0.295
 Humidity:65.0%
 Test Distance:9.983m [K=1.0000]
 Remarks:

CU AND LUMINAIRE BUDGETARY ESTIMATE DIAGRAM

Test:U:120.0V I:0.0794A P:9.425W PF:0.9894 Lamp Flux:789.808x1 lm		
NAME: 一代单头安全灯	TYPE: 白色	WEIGHT:
SPEC.: 3000K	DIM.:	SERIAL No.:
MFR.: HLE	SUR.:	Shielding Angle:

pcc	80%			70%			50%			30%			10%			0
	50%	30%	10%	50%	30%	10%	50%	30%	10%	50%	30%	10%	50%	30%	10%	0
pw																0
pfc																0
RCR	RCR:Room Cavity Ratio Coefficients of Utilization(CU)															
0.0	1.19	1.19	1.19	1.16	1.16	1.16	1.11	1.11	1.11	1.06	1.06	1.06	1.02	1.02	1.02	1.00
1.0	1.07	1.04	1.01	1.05	1.02	.99	1.01	.98	.96	.97	.95	.93	.93	.92	.90	.88
2.0	.96	.90	.86	.94	.89	.85	.91	.86	.83	.88	.84	.81	.85	.82	.79	.77
3.0	.86	.79	.74	.85	.78	.73	.82	.76	.72	.79	.75	.71	.77	.73	.70	.68
4.0	.78	.70	.65	.77	.70	.64	.74	.68	.63	.72	.67	.62	.70	.65	.62	.60
5.0	.71	.63	.57	.70	.62	.57	.68	.61	.56	.66	.60	.56	.64	.59	.55	.53
6.0	.64	.56	.51	.63	.56	.50	.62	.55	.50	.60	.54	.50	.59	.53	.49	.47
7.0	.59	.51	.46	.58	.51	.45	.57	.50	.45	.55	.49	.45	.54	.49	.44	.43
8.0	.54	.46	.41	.54	.46	.41	.52	.46	.41	.51	.45	.41	.50	.44	.40	.39
9.0	.50	.43	.37	.49	.42	.37	.48	.42	.37	.47	.41	.37	.46	.41	.37	.35
10.0	.46	.39	.34	.46	.39	.34	.45	.38	.34	.44	.38	.34	.43	.38	.34	.32



C Range: 0 - 360DEG
 C Interval: 5.0DEG
 Test Speed: HIGH
 Temperature: 27.3DEG
 Operators: QC
 Test Date: 2018-05-26

γ Range: 0 - 90DEG
 γ Interval: 0.5DEG
 Test System: EVERFINE GO-2000B_V1 SYSTEM V2.0.295
 Humidity: 65.0%
 Test Distance: 9.983m [K=1.0000]
 Remarks:

WEC AND CCEC

Test:U:120.0V I:0.0794A P:9.425W PF:0.9894 Lamp Flux:789.808x1 lm		
NAME: 一代单头安全灯	TYPE:白色	WEIGHT:
SPEC.:3000K	DIM.:	SERIAL No.:
MFR.: HLE	SUR.:	Shielding Angle:

ρcc	80%			70%			50%			30%			10%			0
ρw	50%	30%	10%	50%	30%	10%	50%	30%	10%	50%	30%	10%	50%	30%	10%	0
ρfc	20%			20%			20%			20%			20%			0
RCR	RCR:Room Cavity Ratio						Wall Exitance Coefficients(WEC)									
0.0																
1.0	.246	.140	.044	.239	.136	.043	.226	.130	.041	.214	.124	.040	.203	.118	.038	
2.0	.238	.131	.040	.232	.128	.039	.221	.123	.038	.211	.118	.037	.201	.114	.036	
3.0	.226	.120	.036	.221	.118	.036	.211	.114	.035	.202	.111	.034	.193	.107	.033	
4.0	.213	.111	.032	.208	.109	.032	.199	.106	.032	.191	.103	.031	.184	.100	.030	
5.0	.200	.102	.030	.196	.101	.029	.188	.098	.029	.181	.096	.028	.175	.093	.028	
6.0	.188	.094	.027	.185	.093	.027	.178	.091	.027	.172	.089	.026	.166	.087	.026	
7.0	.177	.088	.025	.174	.087	.025	.168	.085	.024	.162	.083	.024	.157	.082	.024	
8.0	.168	.082	.023	.165	.081	.023	.159	.080	.023	.154	.078	.023	.149	.077	.022	
9.0	.159	.077	.021	.156	.076	.021	.151	.075	.021	.146	.073	.021	.142	.072	.021	
10.0	.150	.072	.020	.148	.071	.020	.144	.070	.020	.139	.069	.020	.135	.068	.020	

ρcc	80%			70%			50%			30%			10%			0
ρw	50%	30%	10%	50%	30%	10%	50%	30%	10%	50%	30%	10%	50%	30%	10%	0
ρfc	20%			20%			20%			20%			20%			0
RCR	RCR:Room Cavity Ratio						Ceiling Cavity Exitance Coefficients(CCEC)									
0.0	.190	.190	.190	.163	.163	.163	.111	.111	.111	.064	.064	.064	.020	.020	.020	
1.0	.176	.157	.139	.151	.134	.120	.103	.093	.083	.059	.054	.048	.019	.017	.016	
2.0	.165	.132	.104	.141	.114	.090	.097	.079	.063	.056	.046	.037	.018	.015	.012	
3.0	.156	.114	.081	.134	.098	.070	.092	.068	.049	.053	.040	.029	.017	.013	.009	
4.0	.148	.100	.064	.127	.087	.055	.087	.060	.039	.050	.035	.023	.016	.012	.008	
5.0	.140	.089	.052	.121	.077	.045	.083	.054	.032	.048	.032	.019	.016	.010	.006	
6.0	.134	.081	.043	.115	.070	.037	.079	.049	.026	.046	.029	.016	.015	.009	.005	
7.0	.127	.074	.036	.110	.064	.031	.076	.045	.022	.044	.026	.013	.014	.009	.004	
8.0	.121	.068	.031	.105	.059	.027	.072	.041	.019	.042	.024	.011	.014	.008	.004	
9.0	.116	.063	.027	.100	.055	.024	.069	.038	.017	.040	.023	.010	.013	.007	.003	
10.0	.111	.059	.024	.096	.051	.021	.066	.036	.015	.039	.021	.009	.013	.007	.003	

C Range: 0 - 360DEG
 C Interval: 5.0DEG
 Test Speed: HIGH
 Temperature:27.3DEG
 Operators:QC
 Test Date:2018-05-26

γ Range: 0 - 90DEG
 γ Interval: 0.5DEG
 Test System:EVERFINE GO-2000B_V1 SYSTEM V2.0.295
 Humidity:65.0%
 Test Distance:9.983m [K=1.0000]
 Remarks:

UGR(Unified Glare Rating) Table

Test:U:120.0V I:0.0794A P:9.425W PF:0.9894 Lamp Flux:789.808x1 lm										
NAME: 一代单头安全灯					TYPE:白色			WEIGHT:		
SPEC.:3000K					DIM.:			SERIAL No.:		
MFR.: HLE					SUR.:			Shielding Angle:		
ceiling/cavity	0.7	0.7	0.5	0.5	0.3	0.7	0.7	0.5	0.5	0.3
walls	0.5	0.3	0.5	0.3	0.3	0.5	0.3	0.5	0.3	0.3
working plane	0.2	0.2	0.2	0.2	0.2	0.2	0.2	0.2	0.2	0.2
Room dimensions	Viewed crosswise					Viewed endwise				
x = 2H y = 2H	17.8	19.1	18.0	19.3	19.5	15.5	16.8	15.8	17.0	17.2
3H	17.9	19.1	18.1	19.3	19.5	15.3	16.5	15.6	16.8	17.0
4H	17.9	19.0	18.2	19.3	19.5	15.2	16.4	15.5	16.6	16.9
6H	17.9	18.9	18.2	19.2	19.5	15.1	16.2	15.5	16.5	16.7
8H	17.8	18.9	18.2	19.1	19.4	15.1	16.1	15.4	16.4	16.7
12H	17.8	18.8	18.1	19.1	19.3	15.0	16.0	15.4	16.3	16.6
4H 2H	17.5	18.6	17.8	18.9	19.1	15.3	16.4	15.6	16.6	16.9
3H	17.6	18.6	18.0	18.9	19.2	15.1	16.1	15.4	16.4	16.7
4H	17.7	18.6	18.0	18.9	19.2	15.0	15.9	15.4	16.2	16.5
6H	17.6	18.4	18.0	18.8	19.1	14.9	15.7	15.3	16.1	16.4
8H	17.6	18.3	18.0	18.7	19.1	14.9	15.6	15.3	16.0	16.3
12H	17.6	18.2	18.0	18.6	19.0	14.8	15.5	15.2	15.9	16.3
8H 4H	17.5	18.2	17.9	18.6	19.0	14.9	15.6	15.3	16.0	16.4
6H	17.5	18.1	17.9	18.5	18.9	14.8	15.4	15.2	15.8	16.2
8H	17.5	18.0	17.9	18.4	18.9	14.8	15.3	15.2	15.7	16.1
12H	17.4	17.9	17.9	18.3	18.8	14.7	15.2	15.2	15.6	16.1
12H 4H	17.5	18.1	17.9	18.5	18.9	14.8	15.5	15.3	15.9	16.3
6H	17.5	18.0	17.9	18.4	18.9	14.8	15.3	15.2	15.7	16.1
8H	17.4	17.9	17.9	18.3	18.8	14.7	15.2	15.2	15.6	16.1
Variations with the observer position at spacings:										
S = 1.0H	+ 2.6 / - 5.2					+ 2.9 / - 9.1				
1.5H	+ 4.0 / - 6.7					+ 4.3 / - 7.2				
2.0H	+ 8.5 / - 5.9					+ 3.3 / - 4.6				

CIE Pub.117 Corrected 789.8 lm Total Lamp Luminous Flux. (8log(F/F0) = -0.8)

C Range: 0 - 360DEG
C Interval: 5.0DEG
Test Speed: HIGH
Temperature:27.3DEG
Operators:QC
Test Date:2018-05-26

γ Range: 0 - 90DEG
γ Interval: 0.5DEG
Test System:EVERFINE GO-2000B_V1 SYSTEM V2.0.295
Humidity:65.0%
Test Distance:9.983m [K=1.0000]
Remarks:

UTILIZATION FACTORS TABLE

Test:U:120.0V I:0.0794A P:9.425W PF:0.9894 Lamp Flux:789.808x1 lm		
NAME: 一代单头安全灯	TYPE:白色	WEIGHT:
SPEC.:3000K	DIM.:	SERIAL No.:
MFR.: HLE	SUR.:	Shielding Angle:

REFLECTANCE										
Ceiling	0.8	0.8	0.8	0.7	0.7	0.7	0.5	0.5	0.5	0
Walls	0.7	0.5	0.3	0.7	0.5	0.3	0.7	0.5	0.3	0
Working plane	0.2	0.2	0.2	0.2	0.2	0.2	0.2	0.2	0.2	0
ROOM INDEX	UTILIZATION FACTORS(PERCENT) $k(RI) \times RCR = 5$									
k = 0.60	67	57	51	67	57	51	65	57	51	46
0.80	77	67	61	76	67	61	75	66	61	55
1.00	85	76	70	84	75	70	82	76	69	63
1.25	91	83	77	90	82	77	88	81	76	70
1.50	96	88	82	94	87	82	91	85	81	74
2.00	101	94	89	99	93	89	96	91	87	80
2.50	104	98	93	102	97	92	99	94	90	83
3.00	107	101	97	105	100	96	101	97	94	86
4.00	110	105	102	107	103	100	103	100	97	89
5.00	111	108	104	109	106	103	105	102	100	91
ROOM INDEX	UF(total)									Direct
According to DIN EN 13032-2 2004			Suspended				SHRNOM = 1.25			

C Range: 0 - 360DEG
 C Interval: 5.0DEG
 Test Speed: HIGH
 Temperature:27.3DEG
 Operators:QC
 Test Date:2018-05-26

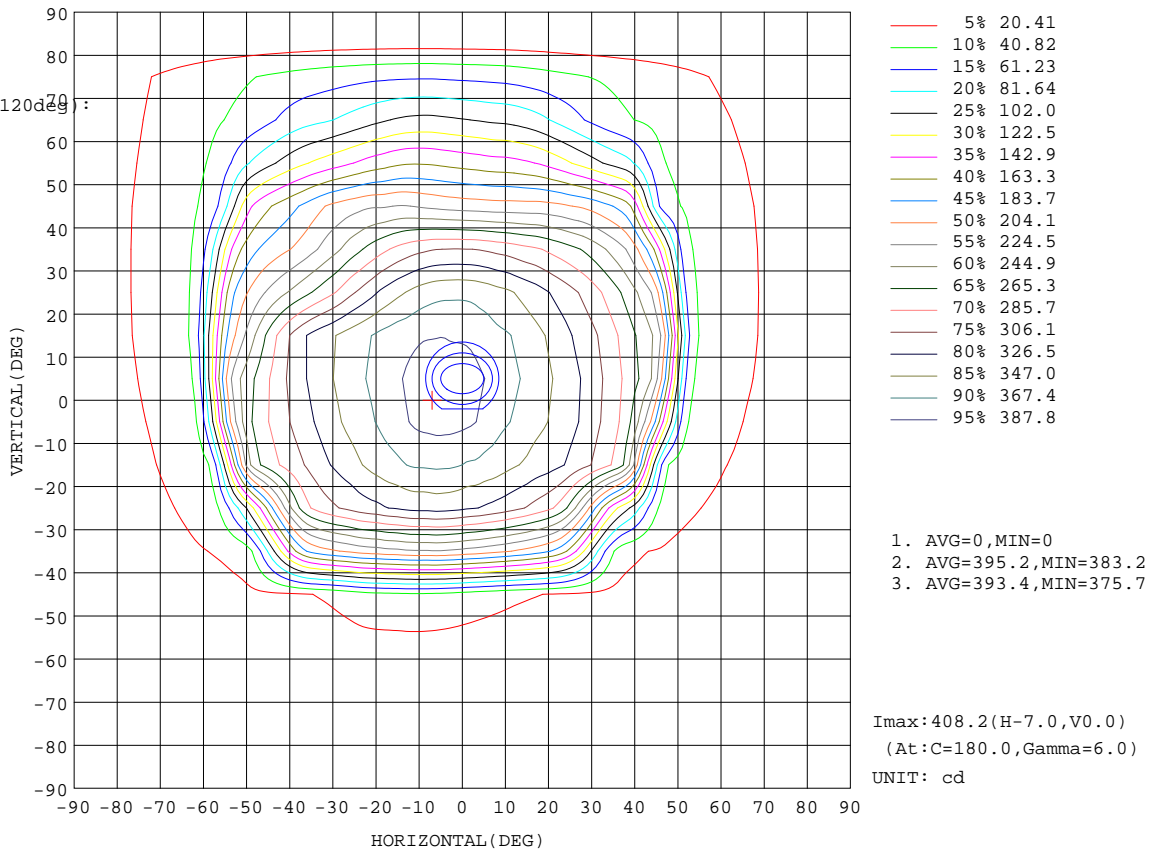
γ Range: 0 - 90DEG
 γ Interval: 0.5DEG
 Test System:EVERFINE GO-2000B_V1 SYSTEM V2.0.295
 Humidity:65.0%
 Test Distance:9.983m [K=1.0000]
 Remarks:

ISOCANDELA DIAGRAM

Test:U:120.0V I:0.0794A P:9.425W PF:0.9894 Lamp Flux:789.808x1 lm		
NAME: 一代单头安全灯	TYPE:白色	WEIGHT:
SPEC.:3000K	DIM.:	SERIAL No.:
MFR.: HLE	SUR.:	Shielding Angle:

Conical surface Flux(90deg):
565.11 lm
%lum = 71.6%
%lamp = 71.6%

Conical surface Flux(120deg):
719.84 lm
%lum = 91.1%
%lamp = 91.1%

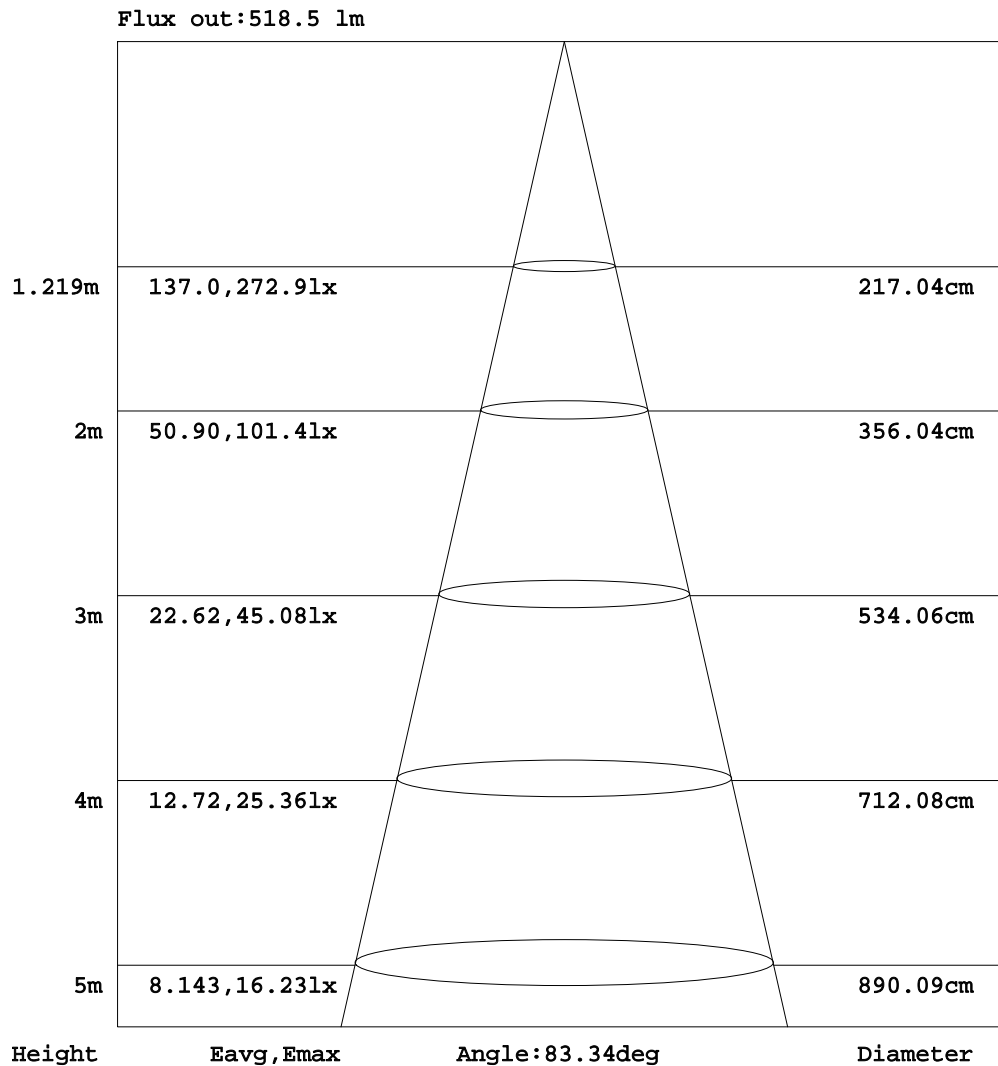


C Range: 0 - 360DEG
C Interval: 5.0DEG
Test Speed: HIGH
Temperature: 27.3DEG
Operators: QC
Test Date: 2018-05-26

γ Range: 0 - 90DEG
γ Interval: 0.5DEG
Test System: EVERFINE GO-2000B_V1 SYSTEM V2.0.295
Humidity: 65.0%
Test Distance: 9.983m [K=1.0000]
Remarks:

AAI Figure

Test:U:120.0V I:0.0794A P:9.425W PF:0.9894 Lamp Flux:789.808x1 lm		
NAME: 一代单头安全灯	TYPE:白色	WEIGHT:
SPEC.:3000K	DIM.:	SERIAL No.:
MFR.: HLE	SUR.:	Shielding Angle:



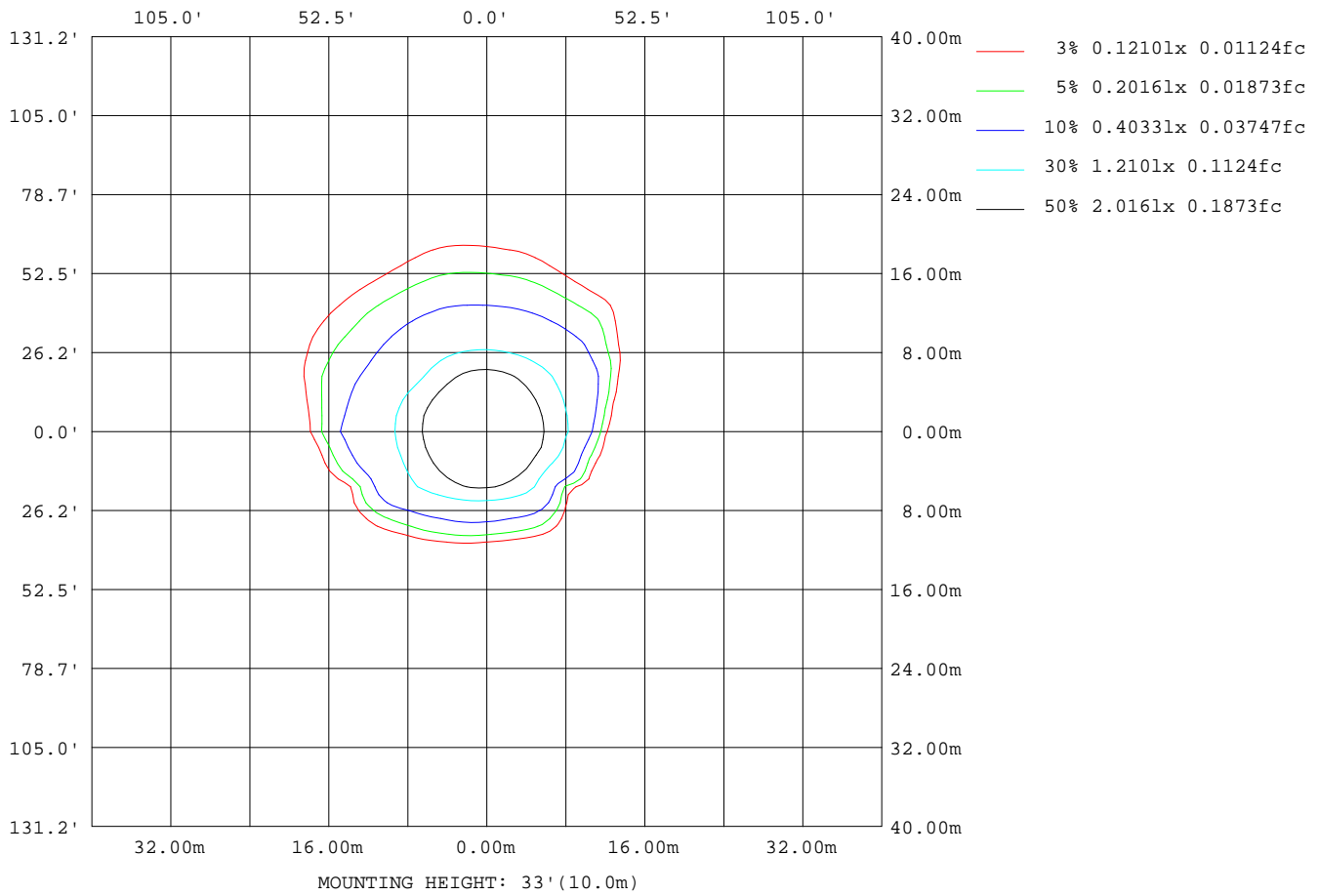
Note:The Curves indicate the illuminated area and the average illumination when the luminaire is at different distance.

C Range: 0 - 360DEG
 C Interval: 5.0DEG
 Test Speed: HIGH
 Temperature:27.3DEG
 Operators:QC
 Test Date:2018-05-26

γ Range: 0 - 90DEG
 γ Interval: 0.5DEG
 Test System:EVERFINE GO-2000B_V1 SYSTEM V2.0.295
 Humidity:65.0%
 Test Distance:9.983m [K=1.0000]
 Remarks:

ISOLUX DIAGRAM

Test:U:120.0V I:0.0794A P:9.425W PF:0.9894 Lamp Flux:789.808x1 lm		
NAME: 一代单头安全灯	TYPE:白色	WEIGHT:
SPEC.:3000K	DIM.:	SERIAL No.:
MFR.: HLE	SUR.:	Shielding Angle:



C Range: 0 - 360DEG
 C Interval: 5.0DEG
 Test Speed: HIGH
 Temperature:27.3DEG
 Operators:QC
 Test Date:2018-05-26

γ Range: 0 - 90DEG
 γ Interval: 0.5DEG
 Test System:EVERFINE GO-2000B_V1 SYSTEM V2.0.295
 Humidity:65.0%
 Test Distance:9.983m [K=1.0000]
 Remarks:

LED Avg.L Report

Test:U:120.0V I:0.0794A P:9.425W PF:0.9894 Lamp Flux:789.808x1 lm		
NAME: 一代单头安全灯	TYPE:白色	WEIGHT:
SPEC.:3000K	DIM.:	SERIAL No.:
MFR.: HLE	SUR.:	Shielding Angle:

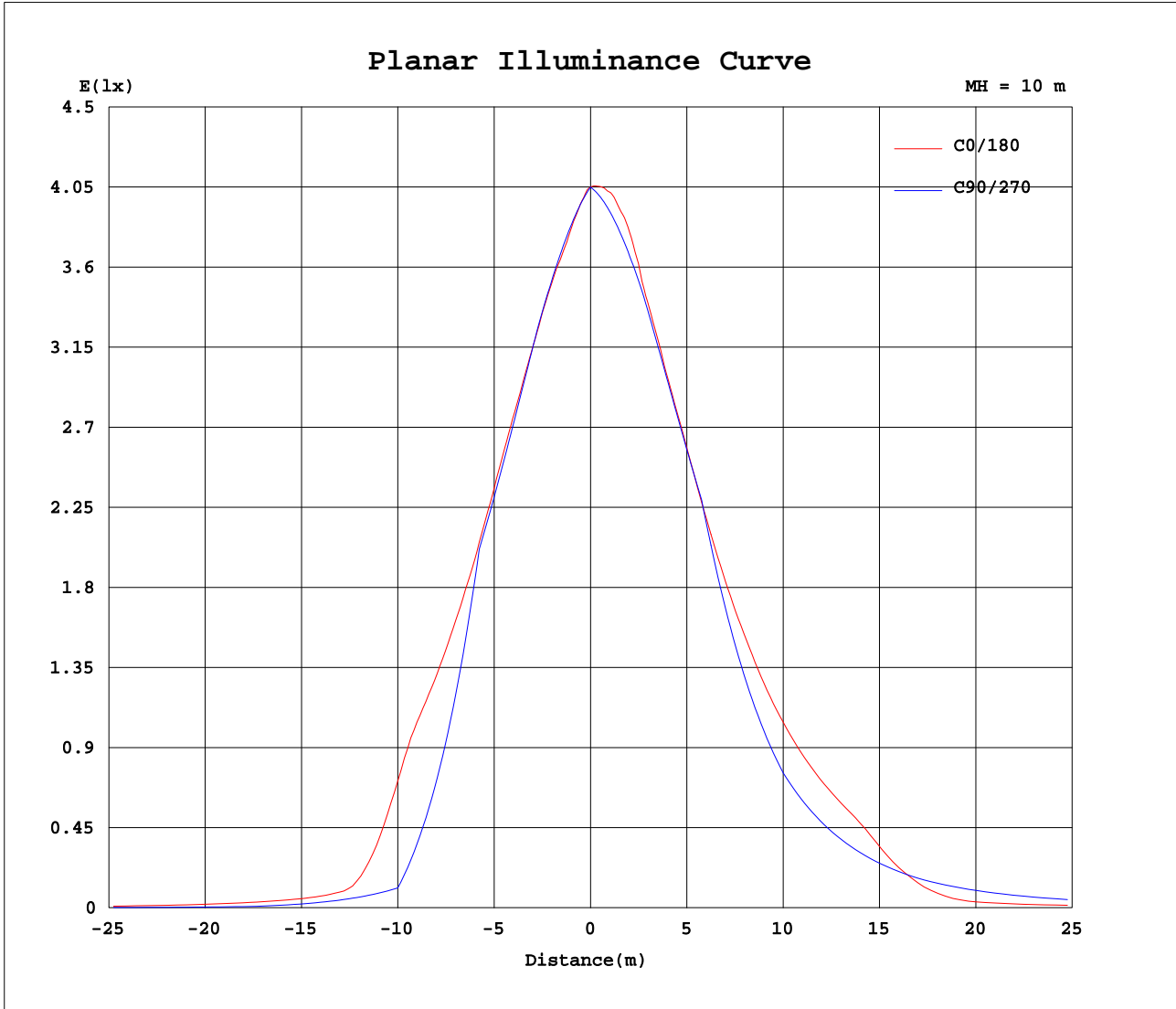
AvgL	cd/m2
L_0~180(65)av	6350
L_0~180(75)av	6010
L_0~180(85)av	6539
L_90~270(65)av	12673
L_90~270(75)av	11076
L_90~270(85)av	0
L_45(65)av	10919
L_45(75)av	9096
L_45(85)av	0

Standard: GB/T 29293-2012

C Range: 0 - 360DEG
 C Interval: 5.0DEG
 Test Speed: HIGH
 Temperature:27.3DEG
 Operators:QC
 Test Date:2018-05-26

γ Range: 0 - 90DEG
 γ Interval: 0.5DEG
 Test System:EVERFINE GO-2000B_V1 SYSTEM V2.0.295
 Humidity:65.0%
 Test Distance:9.983m [K=1.0000]
 Remarks:

Planar Illuminance Curve



C Range: 0 - 360DEG
 C Interval: 5.0DEG
 Test Speed: HIGH
 Temperature: 27.3DEG
 Operators: QC
 Test Date: 2018-05-26

γ Range: 0 - 90DEG
 γ Interval: 0.5DEG
 Test System: EVERFINE GO-2000B_V1 SYSTEM V2.0.295
 Humidity: 65.0%
 Test Distance: 9.983m [K=1.0000]
 Remarks:

LUMINOUS DISTRIBUTION INTENSITY DATA

Test:U:120.0V I:0.0794A P:9.425W PF:0.9894 Lamp Flux:789.808x1 lm		
NAME: 一代单头安全灯	TYPE: 白色	WEIGHT:
SPEC.: 3000K	DIM.:	SERIAL No.:
MFR.: HLE	SUR.:	Shielding Angle:

Table--1

UNIT: cd

C(DEG) γ (DEG)	0	5	10	15	20	25	30	35	40	45	50	55	60	65	70	75	80	85	90
0	405	405	405	405	405	405	405	405	405	405	405	405	405	405	405	405	405	405	405
5	390	389	389	388	388	387	387	387	387	387	388	388	389	389	390	391	391	391	391
10	376	375	373	372	371	371	370	370	370	371	372	372	373	373	375	376	377	378	378
15	363	361	360	359	359	358	357	357	357	357	358	359	360	362	362	363	365	365	364
20	349	347	346	345	345	344	343	343	343	346	344	343	342	343	343	344	345	346	346
25	335	333	332	331	331	331	332	332	328	323	321	321	320	321	322	324	325	327	328
30	316	314	313	312	314	314	308	300	298	297	296	296	297	299	301	303	306	309	310
35	293	291	289	289	292	276	252	241	241	251	262	268	256	243	232	224	219	217	217
40	267	249	239	241	241	203	167	148	151	170	184	183	169	155	142	133	126	124	125
45	202	161	131	112	116	108	79.9	43.4	62.1	85.3	98.0	97.5	85.0	68.2	53.3	41.7	34.2	30.9	31.7
50	67.6	56.9	45.8	33.8	34.8	36.8	24.1	24.3	25.7	34.0	36.5	25.8	17.9	17.8	18.0	18.7	19.9	21.5	23.4
55	32.6	29.6	26.9	24.5	22.6	20.4	18.6	17.1	16.1	14.6	13.8	13.2	12.8	12.6	12.5	12.7	13.3	14.1	15.2
60	26.1	23.4	21.3	19.2	17.3	15.6	13.8	12.2	10.8	9.81	9.03	8.38	7.92	7.47	7.14	6.91	6.82	6.79	6.90
65	20.9	18.3	16.1	14.4	12.3	10.5	9.16	7.49	6.28	5.24	4.38	3.85	4.04	4.16	4.22	4.30	4.42	4.53	4.67
70	15.4	12.9	10.8	8.83	7.07	5.52	4.11	2.70	1.89	2.16	2.27	2.33	2.38	2.39	2.35	2.33	2.35	2.37	2.44
75	10.3	7.84	5.69	3.71	2.76	1.24	0.34	0.65	0.94	1.04	1.01	0.92	0.80	0.66	0.52	0.39	0.29	0.23	0.20
80	4.76	2.37	0.53	0.72	0.22	0.21	0.23	0.27	0.23	0.16	0.12	0.09	0.06	0.04	0.03	0.01	0.01	0.00	0.00
85	0.17	0.24	0.23	0.23	0.19	0.07	0.00	0.00	0.00	0.00	0.00	0.00	0.00	0.00	0.00	0.00	0.00	0.00	0.00
90	0.10	0.00	0.00	0.00	0.00	0.00	0.00	0.00	0.00	0.00	0.00	0.00	0.00	0.00	0.00	0.00	0.00	0.00	0.00

C Range: 0 - 360DEG
C Interval: 5.0DEG
Test Speed: HIGH
Temperature: 27.3DEG
Operators: QC
Test Date: 2018-05-26

γ Range: 0 - 90DEG
γ Interval: 0.5DEG
Test System: EVERFINE GO-2000B_V1 SYSTEM V2.0.295
Humidity: 65.0%
Test Distance: 9.983m [K=1.0000]
Remarks:

LUMINOUS DISTRIBUTION INTENSITY DATA

Test:U:120.0V I:0.0794A P:9.425W PF:0.9894 Lamp Flux:789.808x1 lm		
NAME: 一代单头安全灯	TYPE: 白色	WEIGHT:
SPEC.: 3000K	DIM.:	SERIAL No.:
MFR.: HLE	SUR.:	Shielding Angle:

Table--2

UNIT: cd

C (DEG) \ γ (DEG)	95	100	105	110	115	120	125	130	135	140	145	150	155	160	165	170	175	180	185
0	405	405	405	405	405	405	405	405	405	405	405	405	405	405	405	405	405	405	405
5	392	393	394	394	395	396	397	398	399	400	401	401	402	403	404	405	406	407	407
10	380	381	382	384	385	386	388	389	391	392	393	394	396	398	400	402	404	406	405
15	368	370	372	372	374	376	377	378	380	382	383	383	385	386	386	387	389	391	390
20	350	353	354	357	359	361	364	367	368	368	368	369	370	371	372	374	376	378	378
25	332	335	338	339	341	344	346	348	350	354	356	356	356	357	358	360	362	365	365
30	314	318	320	321	324	325	327	330	331	335	337	339	340	342	343	344	347	350	350
35	223	231	240	253	270	288	309	311	314	315	317	320	324	326	326	327	330	334	334
40	130	138	148	162	179	200	224	254	286	298	299	301	302	305	307	309	312	316	316
45	36.8	45.1	56.4	70.5	87.7	109	135	164	199	238	277	271	263	269	287	288	291	295	291
50	25.9	28.1	29.9	30.8	31.8	32.8	42.5	72.0	108	148	180	193	184	199	240	262	264	272	260
55	16.7	18.2	19.6	20.6	22.0	22.8	21.5	20.4	20.3	56.0	83.9	90.2	75.3	97.0	141	170	192	234	217
60	7.32	8.08	9.27	10.7	12.4	13.5	13.7	14.1	14.8	15.9	18.8	31.2	26.8	27.3	49.8	50.5	68.1	93.9	105
65	4.86	5.11	5.46	5.89	6.44	6.98	7.51	8.69	10.0	11.6	13.3	15.4	18.1	20.4	23.3	26.2	29.1	32.8	38.2
70	2.55	2.72	2.97	3.30	3.73	4.17	4.64	5.29	6.19	7.38	9.14	11.2	13.4	15.5	17.8	20.2	22.8	25.5	28.9
75	0.23	0.31	0.45	0.66	0.96	1.32	1.74	2.29	3.02	4.00	5.26	6.89	8.90	10.9	13.2	15.5	18.0	20.8	23.9
80	0.00	0.01	0.01	0.03	0.04	0.06	0.09	0.12	0.17	0.40	1.32	2.60	4.48	6.44	8.73	11.0	13.6	16.2	19.2
85	0.00	0.00	0.00	0.00	0.00	0.00	0.00	0.00	0.00	0.00	0.00	0.00	0.45	1.89	4.10	6.43	8.81	11.2	14.1
90	0.00	0.00	0.00	0.00	0.00	0.00	0.00	0.00	0.00	0.00	0.00	0.00	0.00	0.00	0.00	0.00	0.00	0.07	0.00

C Range: 0 - 360DEG	γ Range: 0 - 90DEG
C Interval: 5.0DEG	γ Interval: 0.5DEG
Test Speed: HIGH	Test System: EVERFINE GO-2000B_V1 SYSTEM V2.0.295
Temperature: 27.3DEG	Humidity: 65.0%
Operators: QC	Test Distance: 9.983m [K=1.0000]
Test Date: 2018-05-26	Remarks:

LUMINOUS DISTRIBUTION INTENSITY DATA

Test:U:120.0V I:0.0794A P:9.425W PF:0.9894 Lamp Flux:789.808x1 lm		
NAME: 一代单头安全灯	TYPE: 白色	WEIGHT:
SPEC.:3000K	DIM.:	SERIAL No.:
MFR.: HLE	SUR.:	Shielding Angle:

Table--3

UNIT: cd

C(DEG) γ (DEG)	190	195	200	205	210	215	220	225	230	235	240	245	250	255	260	265	270	275	280
0	405	405	405	405	405	405	405	405	405	405	405	405	405	405	405	405	405	405	405
5	406	406	405	405	404	403	403	402	402	401	400	400	400	399	399	399	398	398	397
10	404	403	401	400	400	399	398	398	397	397	396	394	394	393	392	392	391	390	389
15	390	390	390	390	391	391	391	391	391	390	389	389	389	386	386	385	384	383	380
20	377	378	378	378	379	381	381	381	381	380	379	378	377	377	375	374	374	372	370
25	365	365	366	368	369	372	367	364	363	361	362	363	364	364	364	364	363	362	360
30	351	352	354	356	354	346	341	339	338	339	341	345	347	351	352	353	352	352	350
35	336	339	341	335	323	314	309	307	308	312	313	314	314	312	310	308	306	306	306
40	318	321	320	302	287	276	269	271	274	276	277	277	274	270	266	263	260	260	261
45	289	293	280	264	248	235	237	241	245	246	245	242	238	230	223	217	214	214	216
50	253	248	239	227	214	211	213	217	220	220	216	208	205	198	193	188	185	183	184
55	206	205	204	198	191	189	190	194	188	181	176	172	170	168	163	158	155	153	153
60	125	144	165	162	163	164	155	148	143	137	134	134	135	136	134	129	125	122	122
65	47.0	64.0	82.8	98.6	117	116	109	104	98.7	94.3	98.5	104	108	110	109	106	102	99.8	99.0
70	32.2	36.8	42.7	51.1	65.3	66.8	63.5	71.5	75.7	76.5	78.8	81.9	84.1	85.2	84.5	82.0	79.8	77.9	77.1
75	27.2	31.1	34.2	38.3	41.9	45.5	50.7	55.9	59.0	59.8	60.6	61.3	61.4	60.9	59.9	58.4	57.1	56.1	55.2
80	22.5	25.4	28.7	32.4	35.4	38.3	41.0	35.5	28.4	21.9	16.2	11.3	7.21	4.04	1.78	0.44	0.00	0.42	1.64
85	16.9	20.1	20.5	9.48	0.00	0.00	0.00	0.00	0.00	0.00	0.00	0.00	0.00	0.00	0.00	0.00	0.00	0.00	0.00
90	0.00	0.00	0.00	0.00	0.00	0.00	0.00	0.00	0.00	0.00	0.00	0.00	0.00	0.00	0.00	0.00	0.00	0.00	0.00

C Range: 0 - 360DEG
 C Interval: 5.0DEG
 Test Speed: HIGH
 Temperature:27.3DEG
 Operators:QC
 Test Date:2018-05-26

γ Range: 0 - 90DEG
 γ Interval: 0.5DEG
 Test System:EVERFINE GO-2000B_V1 SYSTEM V2.0.295
 Humidity:65.0%
 Test Distance:9.983m [K=1.0000]
 Remarks:

LUMINOUS DISTRIBUTION INTENSITY DATA

Test:U:120.0V I:0.0794A P:9.425W PF:0.9894 Lamp Flux:789.808x1 lm		
NAME: 一代单头安全灯	TYPE: 白色	WEIGHT:
SPEC.: 3000K	DIM.:	SERIAL No.:
MFR.: HLE	SUR.:	Shielding Angle:

Table--4

UNIT: cd

C(DEG) γ (DEG)	285	290	295	300	305	310	315	320	325	330	335	340	345	350	355				
0	405	405	405	405	405	405	405	405	405	405	405	405	405	405	405				
5	396	395	394	393	392	392	391	391	390	390	390	390	390	390	390				
10	387	385	384	383	380	379	378	377	376	376	375	375	375	375	376				
15	379	377	374	373	372	371	369	367	366	365	364	363	362	362	362				
20	368	366	364	364	362	360	358	355	354	352	350	350	349	348	349				
25	357	355	353	350	347	345	344	342	341	338	336	335	334	333	334				
30	346	343	339	336	333	330	327	325	322	320	318	317	316	315	315				
35	307	309	312	316	318	314	310	307	304	302	300	298	295	293	292				
40	263	266	272	276	280	285	291	288	283	278	275	274	271	268	266				
45	220	225	232	238	242	249	252	255	259	252	247	246	246	232	214				
50	186	190	194	200	207	212	214	217	215	218	208	183	155	119	86.2				
55	153	154	154	155	160	167	176	168	146	131	104	66.9	47.9	40.4	35.5				
60	120	116	111	108	109	114	120	96.7	56.9	56.8	42.1	37.1	33.7	30.8	28.1				
65	95.7	89.6	79.9	68.7	58.1	60.5	65.1	51.3	40.7	36.7	33.9	31.1	28.5	25.8	23.2				
70	74.2	69.5	62.9	55.4	48.3	43.0	39.5	36.6	34.0	31.2	28.5	25.8	23.1	20.4	17.8				
75	53.1	50.5	47.6	44.1	40.5	37.2	34.2	31.4	28.7	26.2	23.6	20.4	17.9	15.3	12.6				
80	3.51	5.90	8.78	12.1	15.7	19.9	24.0	26.5	23.4	20.5	17.6	15.0	12.2	9.62	7.08				
85	0.00	0.00	0.00	0.00	0.00	0.00	0.00	0.00	0.00	0.00	0.00	4.48	7.94	6.18	3.75	1.32			
90	0.00	0.00	0.00	0.00	0.00	0.00	0.00	0.00	0.00	0.00	0.00	0.00	0.00	0.00	0.00				

C Range: 0 - 360DEG
 C Interval: 5.0DEG
 Test Speed: HIGH
 Temperature: 27.3DEG
 Operators: QC
 Test Date: 2018-05-26

γ Range: 0 - 90DEG
 γ Interval: 0.5DEG
 Test System: EVERFINE GO-2000B_V1 SYSTEM V2.0.295
 Humidity: 65.0%
 Test Distance: 9.983m [K=1.0000]
 Remarks:

Photometric Data Table [cd]

G/C	0.0	5.0	10.0	15.0	20.0	25.0	30.0	35.0	40.0	45.0
0.0	405.0	405.0	405.0	405.0	405.0	405.0	405.0	405.0	405.0	405.0
2.5	398.6	398.1	397.7	397.3	397.1	396.8	396.7	396.6	396.6	396.7
5.0	390.3	389.5	388.8	388.2	387.7	387.3	387.0	386.8	386.9	387.3
7.5	381.4	380.4	379.5	378.8	378.3	378.1	378.2	378.3	378.6	378.8
10.0	376.2	374.7	373.4	372.3	371.4	370.8	370.4	370.1	370.2	370.8
12.5	369.9	368.3	366.9	365.8	364.9	364.2	363.8	363.4	363.5	363.9
15.0	362.8	361.0	359.7	358.8	358.5	357.7	356.7	356.7	356.9	357.1
17.5	356.5	354.6	352.9	351.6	350.6	350.0	349.1	350.5	350.4	350.5
20.0	349.3	347.5	346.2	345.5	345.0	344.1	343.2	343.2	342.7	345.7
22.5	343.3	341.3	339.8	338.8	338.3	337.5	338.1	338.2	337.1	334.4
25.0	335.4	333.3	331.7	330.7	330.8	331.3	331.8	331.9	328.1	323.3
27.5	326.0	323.8	322.4	321.9	322.0	323.0	324.1	319.1	314.5	311.9
30.0	316.4	313.9	312.6	312.4	313.5	314.2	308.3	299.7	297.5	296.8
32.5	304.7	302.2	301.1	301.3	302.6	304.0	284.9	274.2	273.1	277.4
35.0	293.5	290.6	289.2	289.5	291.6	276.5	251.8	241.5	241.3	250.5
37.5	280.6	274.1	272.1	274.9	279.3	241.5	212.0	198.0	201.2	215.6
40.0	267.2	248.8	239.1	241.3	240.7	202.8	166.9	148.1	150.7	170.4
42.5	249.2	214.3	190.1	183.2	180.8	157.3	121.8	94.87	97.23	124.1
45.0	201.7	160.9	130.5	112.3	116.4	107.8	79.93	43.44	62.08	85.31
47.5	132.2	102.2	75.38	54.86	64.96	64.98	43.39	29.47	38.88	54.89
50.0	67.62	56.87	45.75	33.77	34.82	36.80	24.15	24.32	25.73	34.03
52.5	39.11	34.61	31.18	27.96	26.42	24.02	21.15	20.20	19.92	21.19
55.0	32.58	29.59	26.93	24.53	22.62	20.40	18.61	17.12	16.13	14.55
57.5	29.02	26.25	24.07	21.84	19.87	17.98	16.17	14.60	13.11	12.16
60.0	26.06	23.36	21.31	19.19	17.34	15.59	13.75	12.22	10.82	9.811
62.5	23.79	21.08	18.69	16.99	14.72	13.15	11.43	9.852	8.552	7.515
65.0	20.89	18.27	16.09	14.36	12.32	10.54	9.160	7.488	6.283	5.240
67.5	18.60	15.83	13.45	11.64	9.686	7.942	6.695	5.100	3.967	2.969
70.0	15.44	12.92	10.77	8.828	7.067	5.519	4.105	2.699	1.890	2.155
72.5	12.87	10.46	8.304	6.258	4.711	3.295	1.674	0.9271	1.391	1.578
75.0	10.34	7.836	5.689	3.709	2.764	1.241	0.3411	0.6470	0.9444	1.042
77.5	7.586	5.102	2.969	1.920	1.043	0.2248	0.2671	0.4349	0.5613	0.5410
80.0	4.763	2.374	0.5342	0.7177	0.2225	0.2140	0.2300	0.2661	0.2317	0.1632
82.5	1.869	0.3335	0.2630	0.2240	0.2197	0.2069	0.1938	0.1194	0.0642	0.0223
85.0	0.1705	0.2425	0.2323	0.2286	0.1911	0.0704	0	0	0	0
87.5	0.0987	0.2071	0.2165	0	0	0	0	0	0	0
90.0	0.0987	0	0	0	0	0	0	0	0	0
G/C	50.0	55.0	60.0	65.0	70.0	75.0	80.0	85.0	90.0	95.0
0.0	405.0	405.0	405.0	405.0	405.0	405.0	405.0	405.0	405.0	405.0
2.5	396.9	397.1	397.4	397.8	397.8	397.9	397.9	398.0	398.2	398.5
5.0	387.8	388.3	388.7	389.2	389.8	390.6	391.2	391.3	391.4	392.3
7.5	379.1	379.4	380.1	381.5	382.4	383.2	384.2	384.7	384.6	386.2
10.0	371.6	372.3	372.8	373.4	374.9	376.4	377.3	378.2	377.9	380.4
12.5	363.9	365.3	366.6	367.0	367.6	369.7	370.9	371.8	371.1	374.6
15.0	357.7	358.7	359.8	361.6	361.7	362.5	364.8	365.3	364.3	368.4
17.5	351.6	351.7	353.3	353.4	354.0	353.3	355.6	356.0	355.3	359.4
20.0	343.5	342.8	341.9	342.5	343.5	343.7	345.3	346.5	346.3	350.4
22.5	333.5	331.6	331.6	332.0	332.7	334.1	335.0	336.9	337.3	341.4
25.0	321.1	321.5	320.3	320.8	322.4	323.9	325.1	327.4	328.3	332.5
27.5	309.1	308.2	309.3	310.1	312.0	313.0	315.4	317.9	319.3	323.5
30.0	296.5	296.1	297.5	298.9	301.1	302.9	305.7	308.6	310.3	314.5
32.5	280.7	282.9	284.9	287.6	277.3	270.1	265.0	263.6	263.9	269.3
35.0	261.8	267.9	256.1	243.4	232.0	224.2	218.7	217.2	217.5	222.8
37.5	232.1	226.2	212.6	198.8	187.1	178.4	172.5	170.6	171.0	176.3
40.0	183.7	182.5	169.4	154.8	142.2	132.6	126.2	124.0	124.6	129.8
42.5	138.7	138.9	126.8	111.3	97.65	87.08	80.13	77.41	78.14	83.33
45.0	98.02	97.45	85.03	68.19	53.25	41.67	34.22	30.93	31.71	36.78
47.5	64.05	59.32	44.19	25.50	20.91	21.74	23.32	25.27	27.57	30.44
50.0	36.53	25.78	17.89	17.80	18.04	18.66	19.91	21.51	23.44	25.90
52.5	16.43	15.72	15.34	15.15	15.24	15.64	16.56	17.79	19.30	21.31
55.0	13.76	13.24	12.84	12.55	12.49	12.68	13.26	14.09	15.17	16.68
57.5	11.38	10.79	10.37	9.997	9.799	9.776	10.02	10.43	11.03	12.01
60.0	9.027	8.380	7.922	7.475	7.145	6.912	6.823	6.789	6.900	7.315
62.5	6.699	6.003	5.496	5.060	5.169	5.288	5.457	5.609	5.784	6.023
65.0	4.382	3.853	4.042	4.156	4.215	4.296	4.417	4.529	4.668	4.865
67.5	2.949	3.086	3.198	3.265	3.277	3.311	3.382	3.451	3.552	3.706
70.0	2.271	2.334	2.379	2.385	2.350	2.333	2.349	2.374	2.436	2.547
72.5	1.625	1.612	1.577	1.519	1.431	1.361	1.320	1.300	1.320	1.388
75.0	1.008	0.9151	0.7966	0.6626	0.5190	0.3930	0.2933	0.2273	0.2039	0.2292
77.5	0.4136	0.2362	0.1778	0.1528	0.1336	0.1193	0.1096	0.1038	0.1020	0.1038
80.0	0.1208	0.0876	0.0615	0.0412	0.0256	0.0141	0.0062	0.0015	0	0.0015
82.5	0	0	0	0	0	0	0	0	0	0
85.0	0	0	0	0	0	0	0	0	0	0

C Range: 0 - 360DEG
C Interval: 5.0DEG
Test Speed: HIGH
Temperature: 27.3DEG
Operators: QC
Test Date: 2018-05-26

γ Range: 0 - 90DEG
γ Interval: 0.5DEG
Test System: EVERFINE GO-2000B_V1 SYSTEM V2.0.295
Humidity: 65.0%
Test Distance: 9.983m [K=1.0000]
Remarks:

Photometric Data Table [cd]

87.5	0	0	0	0	0	0	0	0	0	0
90.0	0	0	0	0	0	0	0	0	0	0
G/C	100.0	105.0	110.0	115.0	120.0	125.0	130.0	135.0	140.0	145.0
0.0	405.0	405.0	405.0	405.0	405.0	405.0	405.0	405.0	405.0	405.0
2.5	398.9	399.3	399.8	400.2	400.5	400.9	401.3	401.7	402.2	402.7
5.0	393.2	393.8	394.3	394.9	395.7	396.5	397.5	398.5	399.6	400.6
7.5	387.4	388.0	388.9	390.1	391.5	392.5	393.1	394.4	396.1	397.7
10.0	381.4	382.4	383.9	385.4	385.7	387.7	389.3	390.7	391.6	392.7
12.5	375.4	377.0	378.8	379.2	381.4	382.7	383.5	384.9	386.5	388.2
15.0	369.6	372.2	372.1	374.5	375.7	376.7	378.1	379.7	381.5	383.0
17.5	361.1	363.5	365.5	367.6	369.4	371.0	372.9	374.8	375.2	375.7
20.0	352.7	354.4	357.1	358.7	360.7	363.9	367.0	368.4	368.3	368.3
22.5	344.2	346.2	348.4	349.5	352.3	355.6	357.7	359.5	362.4	362.7
25.0	335.3	337.7	339.1	341.1	344.3	346.3	347.6	350.5	353.9	356.1
27.5	326.4	328.9	328.8	332.3	334.9	336.2	338.5	341.9	343.4	347.1
30.0	317.8	320.1	321.0	323.7	325.3	326.6	330.0	331.1	334.6	337.2
32.5	277.2	287.1	298.5	314.4	315.2	318.2	319.2	322.9	325.5	326.7
35.0	230.9	240.0	253.2	269.7	287.6	309.1	310.8	314.0	315.2	317.5
37.5	184.5	193.5	208.1	224.0	244.1	266.7	295.7	305.3	306.0	308.6
40.0	138.1	148.3	162.4	178.5	200.0	224.0	253.7	285.7	297.7	299.1
42.5	91.61	102.6	116.6	133.2	154.4	180.1	209.2	242.1	281.0	289.3
45.0	45.11	56.42	70.53	87.74	109.2	135.3	164.1	198.7	238.1	276.9
47.5	32.97	35.05	36.03	41.94	64.12	89.70	118.2	153.5	193.4	232.5
50.0	28.09	29.91	30.81	31.82	32.84	42.49	72.02	108.0	147.6	180.2
52.5	23.16	24.76	25.67	26.91	27.75	26.04	24.98	61.91	101.6	129.5
55.0	18.17	19.60	20.61	22.03	22.80	21.51	20.37	20.29	56.02	83.88
57.5	13.14	14.44	15.62	17.17	18.04	17.46	17.03	17.45	18.23	46.51
60.0	8.079	9.275	10.65	12.35	13.52	13.75	14.07	14.82	15.89	18.82
62.5	6.302	6.702	7.158	7.763	9.359	10.40	11.30	12.35	13.69	15.39
65.0	5.110	5.464	5.886	6.440	6.984	7.508	8.689	10.03	11.55	13.31
67.5	3.915	4.219	4.597	5.097	5.581	6.074	6.757	7.790	9.421	11.23
70.0	2.716	2.967	3.296	3.732	4.169	4.636	5.292	6.190	7.381	9.145
72.5	1.514	1.710	1.984	2.353	2.746	3.192	3.796	4.625	5.727	7.122
75.0	0.3090	0.4506	0.6635	0.9601	1.316	1.739	2.291	3.023	4.002	5.259
77.5	0.1096	0.1193	0.1336	0.1528	0.1778	0.2747	0.7655	1.394	2.223	3.320
80.0	0.0062	0.0141	0.0256	0.0412	0.0615	0.0876	0.1247	0.1745	0.3986	1.315
82.5	0	0	0	0	0	0	0	0.0241	0.0743	0.1642
85.0	0	0	0	0	0	0	0	0	0	0
87.5	0	0	0	0	0	0	0	0	0	0
90.0	0	0	0	0	0	0	0	0	0	0
G/C	150.0	155.0	160.0	165.0	170.0	175.0	180.0	185.0	190.0	195.0
0.0	405.0	405.0	405.0	405.0	405.0	405.0	405.0	405.0	405.0	405.0
2.5	403.2	403.8	404.3	404.9	405.5	406.0	406.6	406.3	405.9	405.6
5.0	401.4	402.3	403.2	404.3	405.3	406.4	407.5	406.9	406.3	405.7
7.5	399.0	400.4	401.9	403.1	404.5	406.0	407.6	406.7	405.9	405.2
10.0	394.3	395.9	397.7	399.7	401.7	403.8	406.0	404.8	403.7	402.6
12.5	389.9	391.6	393.3	395.0	396.5	398.2	400.3	399.2	398.4	397.9
15.0	383.4	384.5	385.8	386.3	387.2	388.6	390.5	389.9	389.7	389.9
17.5	375.4	375.8	376.9	378.4	379.9	381.8	384.0	383.3	383.1	383.0
20.0	369.1	369.7	370.9	372.1	373.6	375.6	378.0	377.6	377.4	377.6
22.5	363.1	363.0	363.4	364.8	366.4	368.3	370.7	370.4	370.4	370.7
25.0	356.2	356.3	356.7	357.9	359.8	362.3	365.3	364.8	364.8	365.2
27.5	349.0	349.0	349.1	350.3	352.3	355.1	358.5	358.2	358.4	359.3
30.0	339.3	340.4	341.7	342.8	344.4	346.9	350.4	350.3	350.9	352.3
32.5	329.7	333.4	333.3	334.8	336.3	338.9	342.4	342.5	343.4	345.1
35.0	320.2	323.6	325.5	326.0	327.5	330.0	333.7	334.4	336.2	338.6
37.5	310.8	313.5	316.1	316.8	318.1	320.9	325.2	325.7	327.6	330.9
40.0	300.5	301.9	305.0	306.8	308.8	311.9	316.5	316.1	317.6	321.1
42.5	288.2	286.9	290.0	297.5	298.7	301.2	305.3	303.6	304.6	308.7
45.0	270.6	263.3	268.9	287.5	288.1	290.6	295.1	290.7	289.3	292.7
47.5	240.5	229.5	238.3	269.5	276.3	278.9	284.0	276.0	272.1	271.8
50.0	193.4	184.2	198.5	239.8	262.3	264.4	272.4	260.1	252.7	248.3
52.5	136.9	129.5	150.2	198.7	228.5	236.1	259.8	242.6	231.2	226.3
55.0	90.16	75.33	96.96	141.2	169.9	191.9	234.2	217.5	206.4	205.4
57.5	54.45	42.55	51.16	88.54	101.9	126.6	166.9	166.2	174.1	181.9
60.0	31.21	26.77	27.26	49.80	50.45	68.07	93.88	105.1	125.2	144.1
62.5	19.02	21.56	23.18	29.11	31.86	38.12	45.35	57.25	77.29	99.54
65.0	15.42	18.11	20.40	23.25	26.20	29.10	32.78	38.16	46.97	64.00
67.5	13.32	15.61	17.92	20.43	22.85	25.39	28.25	31.98	36.73	43.70
70.0	11.20	13.38	15.45	17.79	20.19	22.76	25.51	28.86	32.21	36.84
72.5	9.016	11.12	13.11	15.35	17.77	20.34	22.98	26.23	29.26	33.43
75.0	6.892	8.904	10.85	13.25	15.49	18.03	20.77	23.88	27.17	31.06
77.5	4.779	6.703	8.656	11.10	13.36	16.05	18.68	21.75	24.86	28.07

C Range: 0 - 360DEG
 C Interval: 5.0DEG
 Test Speed: HIGH
 Temperature: 27.3DEG
 Operators: QC
 Test Date: 2018-05-26

γ Range: 0 - 90DEG
 γ Interval: 0.5DEG
 Test System: EVERFINE GO-2000B_V1 SYSTEM V2.0.295
 Humidity: 65.0%
 Test Distance: 9.983m [K=1.0000]
 Remarks:

Photometric Data Table [cd]

80.0	2.598	4.481	6.436	8.726	11.00	13.58	16.21	19.16	22.45	25.36
82.5	0.4652	2.232	4.201	6.416	8.707	11.09	13.71	16.54	19.49	22.51
85.0	0	0.4531	1.890	4.104	6.430	8.806	11.23	14.14	16.95	20.06
87.5	0	0	0	0	3.344	5.441	4.746	11.45	12.05	0
90.0	0	0	0	0	0	0	0.0735	0	0	0
G/C	200.0	205.0	210.0	215.0	220.0	225.0	230.0	235.0	240.0	245.0
0.0	405.0	405.0	405.0	405.0	405.0	405.0	405.0	405.0	405.0	405.0
2.5	405.3	404.9	404.6	404.2	403.9	403.7	403.4	403.2	403.0	402.8
5.0	405.1	404.5	403.9	403.3	402.7	402.1	401.6	401.0	400.5	399.9
7.5	404.5	403.7	403.0	402.4	401.5	400.6	399.7	398.7	397.9	397.4
10.0	401.5	400.4	399.6	399.0	398.5	397.9	397.4	396.8	395.9	394.4
12.5	397.3	396.8	396.5	396.2	395.4	394.4	394.0	393.3	393.0	392.4
15.0	390.3	390.3	390.5	390.8	390.9	391.2	390.8	390.0	389.3	389.0
17.5	383.3	383.8	384.2	384.7	385.6	386.1	386.5	387.1	385.7	384.2
20.0	377.9	378.4	379.3	380.7	381.3	380.7	381.1	379.7	379.2	378.1
22.5	371.5	373.6	375.0	376.0	377.3	375.0	371.4	371.1	371.0	370.8
25.0	366.3	367.5	369.1	372.0	367.4	364.1	362.7	360.6	361.8	362.9
27.5	360.7	362.2	364.4	359.4	355.1	352.5	350.9	350.9	351.7	354.2
30.0	354.4	356.4	353.7	346.1	341.0	338.8	338.3	339.1	340.8	344.6
32.5	347.4	350.0	339.2	331.4	325.7	323.3	324.6	326.1	329.4	333.8
35.0	340.9	334.8	322.6	314.3	309.5	306.7	307.7	312.0	313.4	313.8
37.5	334.5	319.7	305.2	295.1	290.5	289.0	290.9	294.0	294.9	295.0
40.0	319.8	302.4	287.4	275.9	269.3	271.1	274.0	276.4	277.0	276.6
42.5	300.4	283.6	268.4	256.0	250.2	254.8	259.0	261.0	260.5	259.0
45.0	279.9	263.8	248.4	235.3	237.5	240.5	245.1	246.4	245.1	242.0
47.5	258.9	244.9	228.7	222.3	224.8	228.8	231.8	232.4	230.9	225.4
50.0	239.4	226.7	213.7	211.4	213.4	219.8	219.8	220.0	215.6	207.8
52.5	220.9	211.2	203.1	200.1	201.4	206.0	209.7	202.0	196.2	190.1
55.0	203.6	197.6	191.3	188.9	190.1	193.7	187.8	180.7	175.9	172.1
57.5	187.5	182.2	178.5	177.0	177.8	170.9	165.0	159.0	155.2	153.6
60.0	164.8	162.4	162.9	163.9	155.1	148.5	142.6	137.0	134.2	134.3
62.5	123.0	134.0	144.4	140.5	132.3	126.4	120.5	115.0	112.9	114.8
65.0	82.77	98.56	117.2	115.8	109.1	104.2	98.67	94.25	98.46	103.5
67.5	56.11	66.60	88.16	90.82	85.25	81.80	84.14	85.15	88.45	92.60
70.0	42.71	51.13	65.32	66.79	63.53	71.47	75.66	76.47	78.84	81.88
72.5	37.52	42.79	49.57	49.90	56.63	63.35	67.24	68.05	69.61	71.47
75.0	34.21	38.34	41.86	45.54	50.69	55.87	58.96	59.78	60.60	61.33
77.5	31.40	35.27	38.49	41.75	45.53	48.98	50.90	51.53	46.84	41.86
80.0	28.66	32.38	35.43	38.34	41.00	35.49	28.38	21.88	16.17	11.26
82.5	25.92	29.39	31.09	21.39	12.69	4.819	0	0	0	0
85.0	20.53	9.477	0	0	0	0	0	0	0	0
87.5	0	0	0	0	0	0	0	0	0	0
90.0	0	0	0	0	0	0	0	0	0	0
G/C	250.0	255.0	260.0	265.0	270.0	275.0	280.0	285.0	290.0	295.0
0.0	405.0	405.0	405.0	405.0	405.0	405.0	405.0	405.0	405.0	405.0
2.5	402.6	402.3	402.0	401.8	401.6	401.3	401.1	400.9	400.7	400.5
5.0	399.6	399.4	399.1	398.6	398.1	397.7	397.3	396.3	395.2	394.2
7.5	396.7	396.0	395.9	395.4	394.7	394.1	393.0	391.4	389.8	388.4
10.0	393.7	393.0	392.4	392.2	391.3	390.5	388.7	386.6	384.9	383.7
12.5	390.5	389.9	389.0	389.0	387.8	386.8	384.5	382.1	381.1	379.3
15.0	388.7	386.1	385.8	385.5	384.4	383.1	380.3	378.8	377.4	374.2
17.5	383.6	381.8	380.8	380.0	379.1	377.7	374.8	374.0	371.2	369.9
20.0	377.1	376.8	375.1	374.5	373.8	372.3	369.8	368.5	365.6	364.3
22.5	370.8	370.5	369.4	369.1	368.4	367.1	364.8	362.3	359.9	359.1
25.0	363.8	364.1	363.8	363.7	363.1	361.9	359.6	356.7	354.6	352.7
27.5	356.1	357.7	358.0	358.2	357.8	356.8	354.6	351.2	349.5	345.8
30.0	347.4	350.9	351.8	352.7	352.5	351.8	349.5	345.8	343.4	339.1
32.5	334.3	334.1	331.9	330.6	329.5	329.4	329.1	329.3	331.0	332.7
35.0	313.9	312.3	309.7	307.9	306.5	306.3	306.2	307.4	309.0	311.6
37.5	293.9	290.9	287.7	285.2	283.5	283.3	283.3	285.5	287.4	291.5
40.0	274.2	270.0	265.9	262.5	260.5	260.3	260.7	263.4	266.4	271.6
42.5	255.6	249.6	244.3	239.9	237.5	237.3	238.3	241.7	245.8	251.9
45.0	237.9	229.9	222.8	217.3	214.5	214.3	216.1	220.3	225.4	232.5
47.5	221.0	213.4	202.3	199.6	198.7	199.4	199.4	202.3	206.6	213.4
50.0	204.5	198.4	192.6	187.7	184.7	183.4	183.8	186.2	189.7	194.4
52.5	187.5	183.2	178.0	173.1	169.8	168.1	168.2	169.9	172.1	174.5
55.0	170.4	167.6	163.3	158.5	154.9	152.7	152.7	153.3	153.9	153.9
57.5	153.0	151.7	148.5	143.9	140.0	137.3	137.2	136.5	135.2	132.6
60.0	135.3	135.6	133.7	129.2	125.1	121.9	121.6	119.6	116.0	110.9
62.5	119.6	122.0	121.1	117.4	113.8	110.7	110.0	106.6	99.96	89.19
65.0	107.6	109.7	108.9	105.6	102.4	99.78	99.05	95.69	89.57	79.92
67.5	95.77	97.48	96.69	93.84	91.12	88.84	88.03	84.91	79.41	71.18
70.0	84.13	85.24	84.45	82.04	79.79	77.93	77.05	74.21	69.54	62.91

C Range: 0 - 360DEG
C Interval: 5.0DEG
Test Speed: HIGH
Temperature: 27.3DEG
Operators: QC
Test Date: 2018-05-26

γ Range: 0 - 90DEG
γ Interval: 0.5DEG
Test System: EVERFINE GO-2000B_V1 SYSTEM V2.0.295
Humidity: 65.0%
Test Distance: 9.983m [K=1.0000]
Remarks:

Photometric Data Table [cd]

72.5	72.69	73.01	72.20	70.21	68.46	67.03	66.13	63.60	59.93	55.07
75.0	61.40	60.86	59.95	58.37	57.13	56.15	55.24	53.09	50.53	47.61
77.5	37.64	34.22	31.64	29.60	28.57	28.46	29.15	29.82	30.91	32.69
80.0	7.207	4.036	1.779	0.4351	0	0.4182	1.638	3.513	5.902	8.780
82.5	0	0	0	0	0	0	0	0	0	0
85.0	0	0	0	0	0	0	0	0	0	0
87.5	0	0	0	0	0	0	0	0	0	0
90.0	0	0	0	0	0	0	0	0	0	0
G/C	300.0	305.0	310.0	315.0	320.0	325.0	330.0	335.0	340.0	345.0
0.0	405.0	405.0	405.0	405.0	405.0	405.0	405.0	405.0	405.0	405.0
2.5	400.0	399.5	399.1	398.7	398.4	398.2	398.1	398.0	398.0	398.0
5.0	393.3	392.5	391.8	391.1	390.6	390.1	389.9	389.7	389.6	389.6
7.5	387.4	386.4	385.6	384.5	383.3	382.3	381.7	381.2	380.8	380.7
10.0	382.6	380.4	378.8	377.6	376.7	376.0	375.6	375.3	375.3	375.3
12.5	376.7	375.2	373.9	373.2	372.6	371.9	370.6	369.9	369.5	369.3
15.0	372.7	371.5	370.8	369.0	367.3	366.0	364.6	363.8	363.1	362.5
17.5	369.4	368.9	365.8	363.9	361.7	359.7	357.8	356.9	356.2	355.8
20.0	364.0	361.8	360.4	358.3	355.4	353.8	352.1	350.5	349.6	348.9
22.5	356.5	354.6	352.5	351.2	350.3	347.6	345.5	343.4	342.3	341.7
25.0	349.7	347.2	345.3	343.6	342.3	340.8	338.1	336.1	334.6	333.7
27.5	342.7	340.2	337.9	335.6	333.3	331.9	330.2	327.2	325.6	324.5
30.0	336.1	333.4	330.0	326.9	324.6	322.3	320.5	318.5	317.0	315.8
32.5	329.8	325.7	321.6	318.6	315.6	312.9	311.2	311.0	308.0	305.0
35.0	316.0	318.1	313.8	310.4	306.8	303.9	301.8	299.7	297.9	294.8
37.5	295.5	299.0	304.0	302.1	297.9	293.9	290.2	288.2	286.9	283.1
40.0	275.8	280.0	285.0	290.9	287.9	282.6	278.3	275.4	274.5	271.1
42.5	256.4	261.3	266.6	271.4	275.3	270.8	265.8	262.3	259.9	258.2
45.0	237.6	242.4	248.6	252.3	255.4	258.9	252.4	247.4	245.8	245.7
47.5	219.4	224.3	229.9	233.1	236.0	239.0	237.9	232.3	225.9	216.3
50.0	200.1	207.1	211.8	214.3	216.8	215.1	217.9	207.9	182.7	155.0
52.5	177.9	185.2	193.4	195.7	195.9	184.4	180.9	161.8	121.1	89.16
55.0	155.1	160.3	167.2	176.4	168.5	145.8	130.7	104.4	66.92	47.93
57.5	131.8	134.9	140.8	149.2	131.9	100.1	86.79	60.32	43.53	37.72
60.0	107.8	108.9	113.9	120.1	96.72	56.91	56.80	42.10	37.09	33.69
62.5	82.97	82.25	87.11	91.15	69.35	45.23	41.38	37.02	33.79	31.09
65.0	68.72	58.07	60.50	65.11	51.29	40.69	36.69	33.87	31.12	28.54
67.5	61.78	52.83	46.38	44.11	41.26	36.92	33.84	31.30	28.23	26.15
70.0	55.39	48.28	42.98	39.49	36.57	33.97	31.24	28.49	25.82	23.06
72.5	49.50	44.18	39.94	36.80	33.89	31.41	28.82	25.93	23.16	20.42
75.0	44.10	40.46	37.17	34.24	31.36	28.71	26.25	23.56	20.45	17.90
77.5	35.04	37.02	34.60	31.76	28.88	26.03	23.38	20.78	17.90	15.05
80.0	12.08	15.74	19.86	24.01	26.46	23.41	20.53	17.61	14.99	12.20
82.5	0	0	0	3.253	8.172	12.85	16.95	14.66	11.83	9.286
85.0	0	0	0	0	0	0	0	4.480	7.940	6.182
87.5	0	0	0	0	0	0	0	0	0	0
90.0	0	0	0	0	0	0	0	0	0	0
G/C	350.0	355.0								
0.0	405.0	405.0								
2.5	398.1	398.3								
5.0	389.8	390.0								
7.5	380.8	381.0								
10.0	375.5	375.8								
12.5	369.3	369.4								
15.0	362.2	362.3								
17.5	355.6	355.9								
20.0	348.5	348.6								
22.5	341.7	342.2								
25.0	333.4	334.0								
27.5	323.9	324.6								
30.0	315.1	315.3								
32.5	303.6	303.6								
35.0	292.8	292.4								
37.5	280.9	279.9								
40.0	267.6	266.4								
42.5	254.5	250.9								
45.0	232.4	214.3								
47.5	183.6	151.8								
50.0	118.8	86.21								
52.5	63.07	44.88								
55.0	40.42	35.45								
57.5	34.14	31.02								
60.0	30.77	28.12								
62.5	28.44	25.96								

C Range: 0 - 360DEG
 C Interval: 5.0DEG
 Test Speed: HIGH
 Temperature: 27.3DEG
 Operators: QC
 Test Date: 2018-05-26

γ Range: 0 - 90DEG
 γ Interval: 0.5DEG
 Test System: EVERFINE GO-2000B_V1 SYSTEM V2.0.295
 Humidity: 65.0%
 Test Distance: 9.983m [K=1.0000]
 Remarks:

Photometric Data Table [cd]

65.0	25.80	23.21
67.5	23.18	20.78
70.0	20.40	17.79
72.5	17.90	15.20
75.0	15.27	12.59
77.5	12.41	9.844
80.0	9.616	7.084
82.5	6.569	4.169
85.0	3.746	1.319
87.5	1.001	0.2237
90.0	0	0

C Range: 0 - 360DEG
 C Interval: 5.0DEG
 Test Speed: HIGH
 Temperature: 27.3DEG
 Operators: QC
 Test Date: 2018-05-26

γ Range: 0 - 90DEG
 γ Interval: 0.5DEG
 Test System: EVERFINE GO-2000B_V1 SYSTEM V2.0.295
 Humidity: 65.0%
 Test Distance: 9.983m [K=1.0000]
 Remarks: