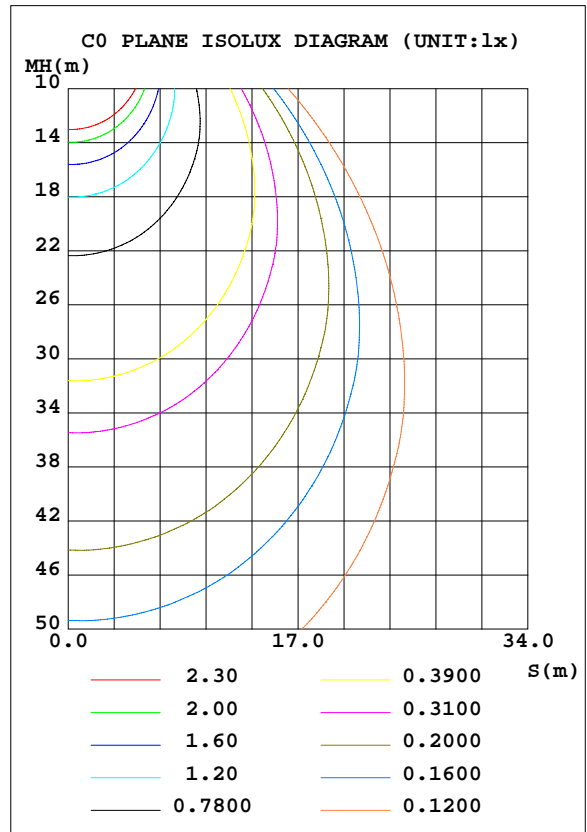
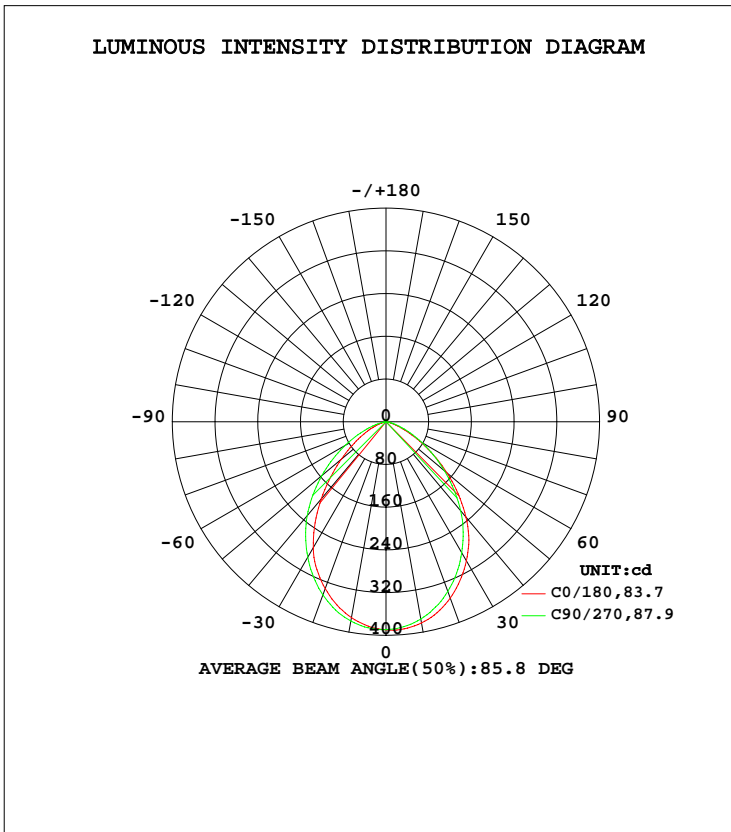


LUMINAIRE PHOTOMETRIC TEST REPORT

|  |       |                  |
|--|-------|------------------|
| Test:U:119.96V I:0.0885A P:9.8198W PF:0.9254 Freq:60.00Hz Lamp Flux:746.484x1 lm |       |                  |
| NAME:  | TYPE: | WEIGHT:          |
| SPEC.:   | DIM.: | SERIAL No.:      |
| MFR.: WESTGATE   | SUR.: | Shielding Angle: |

| DATA OF LAMP     |         | PHOTOMETRIC DATA Eff: 76.02 lm/W |        |                    |          |
|------------------|---------|----------------------------------|--------|--------------------|----------|
| MODEL            |         | I <sub>max</sub> (cd)            | 390.6  | S/MH(C0/180)       | 1.08     |
| NOMINAL POWER(W) | 10      | LOR(%)                           | 100.0  | S/MH(C90/270)      | 1.14     |
| RATED VOLTAGE(V) | 120     | TOTAL FLUX(lm)                   | 746.48 | η UP, DN(C0-180)   | 0.8,49.0 |
| NOMINAL FLUX(lm) | 746.484 | CIE CLASS                        | DIRECT | η UP, DN(C180-360) | 0.7,49.6 |
| LAMPS INSIDE     | 1       | η up(%)                          | 1.4    | CIBSE SHR NOM      | 1.25     |
| TEST VOLTAGE(V)  | 120     | η down(%)                        | 98.6   | CIBSE SHR MAX      | 1.25     |



C Range: 0 - 360DEG  
 C Interval: 22.5DEG  
 Test Speed: HIGH  
 Temperature:25DEG  
 Operators:  
 Test Date:2019-12-13

γ Range: 0 - 180DEG  
 γ Interval: 1.0DEG  
 Test System:EVERFINE GO-2000B\_V1 SYSTEM V2.0.407.13  
 Humidity:55%  
 Test Distance:6.244m [K=1.0000]  
 Remarks:

## ZONAL FLUX DIAGRAM

## ZONAL FLUX DIAGRAM:

| $\gamma$ | C0                    | C45    | C90    | C135   | C180   | C225   | C270   | C315   | $\gamma$ | $\Phi$ zone | $\Phi$ total | %lum,lamp |
|----------|-----------------------|--------|--------|--------|--------|--------|--------|--------|----------|-------------|--------------|-----------|
| 10       | 382.4                 | 379.9  | 375.1  | 371.4  | 372.6  | 374.8  | 378.9  | 382.0  | 0- 10    | 36.58       | 36.58        | 4.9,4.9   |
| 20       | 351.7                 | 347.7  | 338.3  | 331.2  | 332.6  | 338.1  | 345.3  | 350.1  | 10- 20   | 101.9       | 138.4        | 18.5,18.5 |
| 30       | 300.9                 | 296.2  | 283.8  | 273.1  | 272.5  | 283.5  | 292.9  | 299.1  | 20- 30   | 145.6       | 284.0        | 38,38     |
| 40       | 233.0                 | 231.6  | 217.7  | 198.0  | 188.5  | 211.2  | 229.7  | 235.9  | 30- 40   | 158.7       | 442.7        | 59.3,59.3 |
| 50       | 149.3                 | 153.7  | 142.9  | 120.3  | 109.3  | 132.6  | 156.9  | 160.0  | 40- 50   | 137.9       | 580.6        | 77.8,77.8 |
| 60       | 73.04                 | 81.22  | 77.23  | 58.97  | 51.82  | 66.79  | 87.60  | 85.41  | 50- 60   | 93.74       | 674.3        | 90.3,90.3 |
| 70       | 23.12                 | 28.28  | 29.96  | 20.45  | 16.51  | 22.92  | 33.92  | 29.70  | 60- 70   | 46.47       | 720.8        | 96.6,96.6 |
| 80       | 4.322                 | 4.996  | 4.092  | 3.705  | 3.078  | 4.157  | 5.814  | 5.252  | 70- 80   | 13.36       | 734.1        | 98.3,98.3 |
| 90       | 0.3551                | 0.3755 | 0.4380 | 0.4380 | 0.3232 | 0.3382 | 0.3182 | 0.2633 | 80- 90   | 1.702       | 735.8        | 98.6,98.6 |
| 100      | 0.6003                | 0.6779 | 0.7906 | 0.8006 | 0.6412 | 0.6587 | 0.6187 | 0.5285 | 90-100   | 0.5569      | 736.4        | 98.6,98.6 |
| 110      | 1.013                 | 1.096  | 1.238  | 1.254  | 1.067  | 1.057  | 1.014  | 0.8916 | 100-110  | 0.9156      | 737.3        | 98.8,98.8 |
| 120      | 1.536                 | 1.609  | 1.724  | 1.794  | 1.560  | 1.553  | 1.460  | 1.350  | 110-120  | 1.307       | 738.6        | 98.9,98.9 |
| 130      | 2.119                 | 2.124  | 2.265  | 2.300  | 2.098  | 2.046  | 1.981  | 1.825  | 120-130  | 1.636       | 740.2        | 99.2,99.2 |
| 140      | 2.628                 | 2.548  | 2.673  | 2.713  | 2.546  | 2.461  | 2.403  | 2.251  | 130-140  | 1.786       | 742.0        | 99.4,99.4 |
| 150      | 2.906                 | 2.926  | 3.031  | 3.081  | 2.882  | 2.826  | 2.779  | 2.674  | 140-150  | 1.699       | 743.7        | 99.6,99.6 |
| 160      | 3.309                 | 3.289  | 3.371  | 3.429  | 3.305  | 3.229  | 3.167  | 3.069  | 150-160  | 1.428       | 745.2        | 99.8,99.8 |
| 170      | 3.574                 | 3.594  | 3.624  | 3.677  | 3.607  | 3.565  | 3.507  | 3.445  | 160-170  | 0.9715      | 746.1        | 100,100   |
| 180      | 3.785                 | 3.795  | 3.742  | 3.747  | 3.782  | 3.797  | 3.767  | 3.782  | 170-180  | 0.3499      | 746.5        | 100,100   |
| DEG      | LUMINOUS INTENSITY:cd |        |        |        |        |        |        |        |          | UNIT:lm     |              |           |

Conical surface Flux(90deg): 516.15 lm

%lum = 69.1%

%lamp = 69.1%

Conical surface Flux(120deg): 674.31 lm

%lum = 90.3%

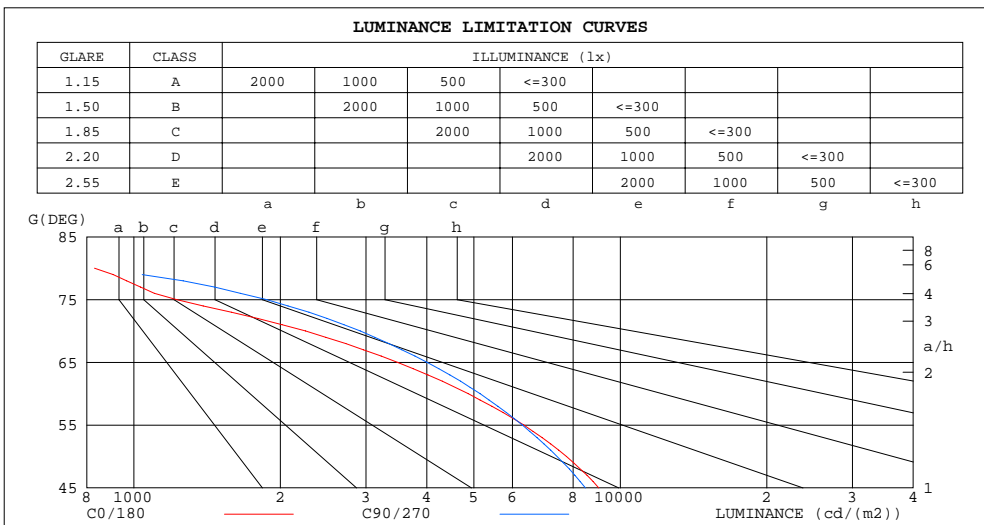
%lamp = 90.3%

C Range: 0 - 360DEG  
 C Interval: 22.5DEG  
 Test Speed: HIGH  
 Temperature:25DEG  
 Operators:  
 Test Date:2019-12-13

$\gamma$  Range: 0 - 180DEG  
 $\gamma$  Interval: 1.0DEG  
 Test System:EVERFINE GO-2000B\_V1 SYSTEM V2.0.407.13  
 Humidity:55%  
 Test Distance:6.244m [K=1.0000]  
 Remarks:

LUMINANCE LIMITATION CURVES

|  |       |                  |
|--|-------|------------------|
| Test:U:119.96V I:0.0885A P:9.8198W PF:0.9254 Freq:60.00Hz Lamp Flux:746.484x1 lm |       |                  |
| NAME:  | TYPE: | WEIGHT:          |
| SPEC.:   | DIM.: | SERIAL No.:      |
| MFR.: WESTGATE   | SUR.: | Shielding Angle: |



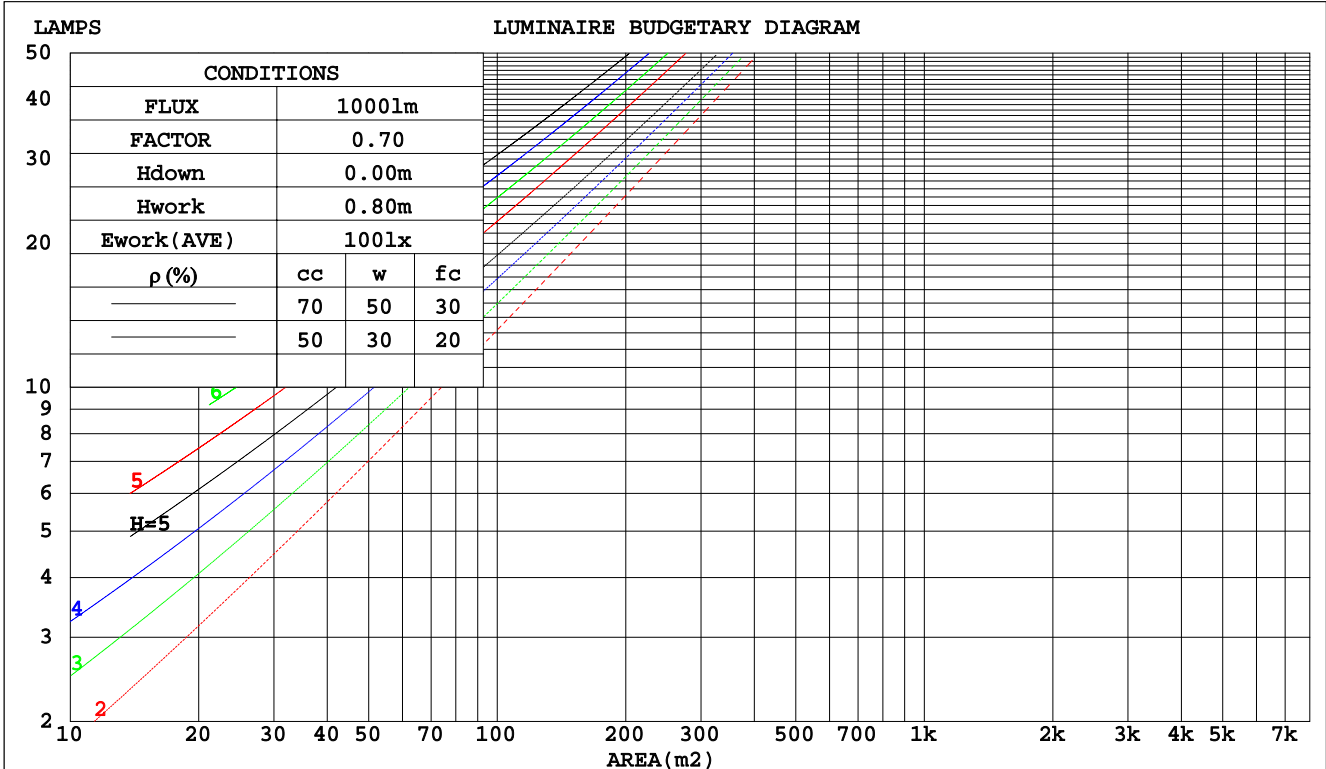
C Range: 0 - 360DEG  
 C Interval: 22.5DEG  
 Test Speed: HIGH  
 Temperature: 25DEG  
 Operators:  
 Test Date: 2019-12-13

γ Range: 0 - 180DEG  
 γ Interval: 1.0DEG  
 Test System: EVERFINE GO-2000B\_V1 SYSTEM V2.0.407.13  
 Humidity: 55%  
 Test Distance: 6.244m [K=1.0000]  
 Remarks:

CU AND LUMINAIRE BUDGETARY ESTIMATE DIAGRAM

|  |       |                  |
|--|-------|------------------|
| Test:U:119.96V I:0.0885A P:9.8198W PF:0.9254 Freq:60.00Hz Lamp Flux:746.484x1 lm |       |                  |
| NAME:  | TYPE: | WEIGHT:          |
| SPEC.:   | DIM.: | SERIAL No.:      |
| MFR.: WESTGATE   | SUR.: | Shielding Angle: |

| pcc  | 80%                             |      |      | 70%  |      |      | 50%  |      |      | 30%  |      |      | 10%  |      |      | 0   |
|------|---------------------------------|------|------|------|------|------|------|------|------|------|------|------|------|------|------|-----|
|      | 50%                             | 30%  | 10%  | 50%  | 30%  | 10%  | 50%  | 30%  | 10%  | 50%  | 30%  | 10%  | 50%  | 30%  | 10%  | 0   |
| pw   |                                 |      |      |      |      |      |      |      |      |      |      |      |      |      |      | 0   |
| pfc  | 20%                             |      |      | 20%  |      |      | 20%  |      |      | 20%  |      |      | 20%  |      |      | 0   |
| RCR  | RCR:Room Cavity Ratio           |      |      |      |      |      |      |      |      |      |      |      |      |      |      |     |
|      | Coefficients of Utilization(CU) |      |      |      |      |      |      |      |      |      |      |      |      |      |      |     |
| 0.0  | 1.19                            | 1.19 | 1.19 | 1.16 | 1.16 | 1.16 | 1.10 | 1.10 | 1.10 | 1.05 | 1.05 | 1.05 | 1.01 | 1.01 | 1.01 | .99 |
| 1.0  | 1.07                            | 1.04 | 1.01 | 1.05 | 1.02 | .99  | 1.00 | .98  | .96  | .96  | .94  | .92  | .93  | .91  | .89  | .87 |
| 2.0  | .96                             | .90  | .86  | .94  | .89  | .85  | .90  | .86  | .82  | .87  | .83  | .80  | .84  | .81  | .78  | .76 |
| 3.0  | .86                             | .79  | .74  | .84  | .78  | .73  | .81  | .76  | .72  | .79  | .74  | .70  | .76  | .72  | .69  | .67 |
| 4.0  | .78                             | .70  | .64  | .76  | .69  | .64  | .74  | .68  | .63  | .71  | .66  | .62  | .69  | .65  | .61  | .59 |
| 5.0  | .70                             | .62  | .57  | .69  | .62  | .56  | .67  | .61  | .56  | .65  | .59  | .55  | .63  | .58  | .54  | .52 |
| 6.0  | .64                             | .56  | .50  | .63  | .56  | .50  | .61  | .55  | .50  | .59  | .54  | .49  | .58  | .53  | .49  | .47 |
| 7.0  | .59                             | .51  | .45  | .58  | .50  | .45  | .56  | .49  | .45  | .55  | .49  | .44  | .53  | .48  | .44  | .42 |
| 8.0  | .54                             | .46  | .41  | .53  | .46  | .41  | .52  | .45  | .40  | .51  | .45  | .40  | .49  | .44  | .40  | .38 |
| 9.0  | .50                             | .42  | .37  | .49  | .42  | .37  | .48  | .41  | .37  | .47  | .41  | .37  | .46  | .40  | .36  | .35 |
| 10.0 | .46                             | .39  | .34  | .46  | .39  | .34  | .45  | .38  | .34  | .44  | .38  | .34  | .43  | .37  | .33  | .32 |



C Range: 0 - 360DEG  
 C Interval: 22.5DEG  
 Test Speed: HIGH  
 Temperature: 25DEG  
 Operators:  
 Test Date: 2019-12-13

$\gamma$  Range: 0 - 180DEG  
 $\gamma$  Interval: 1.0DEG  
 Test System: EVERFINE GO-2000B\_V1 SYSTEM V2.0.407.13  
 Humidity: 55%  
 Test Distance: 6.244m [K=1.0000]  
 Remarks:

WEC AND CCEC

|  |       |                  |
|--|-------|------------------|
| Test:U:119.96V I:0.0885A P:9.8198W PF:0.9254 Freq:60.00Hz Lamp Flux:746.484x1 lm |       |                  |
| NAME:  | TYPE: | WEIGHT:          |
| SPEC.:   | DIM.: | SERIAL No.:      |
| MFR.: WESTGATE   | SUR.: | Shielding Angle: |

| ρcc  | 80%                   |      |      | 70%  |      |      | 50%                             |      |      | 30%  |      |      | 10%  |      |      | 0 |
|------|-----------------------|------|------|------|------|------|---------------------------------|------|------|------|------|------|------|------|------|---|
| ρw   | 50%                   | 30%  | 10%  | 50%  | 30%  | 10%  | 50%                             | 30%  | 10%  | 50%  | 30%  | 10%  | 50%  | 30%  | 10%  | 0 |
| ρfc  | 20%                   |      |      | 20%  |      |      | 20%                             |      |      | 20%  |      |      | 20%  |      |      | 0 |
| RCR  | RCR:Room Cavity Ratio |      |      |      |      |      | Wall Exitance Coefficients(WEC) |      |      |      |      |      |      |      |      |   |
| 0.0  |                       |      |      |      |      |      |                                 |      |      |      |      |      |      |      |      |   |
| 1.0  | .242                  | .138 | .044 | .235 | .134 | .043 | .221                            | .127 | .041 | .209 | .120 | .039 | .197 | .114 | .037 |   |
| 2.0  | .236                  | .129 | .040 | .230 | .127 | .039 | .218                            | .121 | .038 | .207 | .116 | .036 | .197 | .111 | .035 |   |
| 3.0  | .225                  | .120 | .036 | .219 | .117 | .035 | .209                            | .113 | .034 | .199 | .109 | .033 | .190 | .105 | .033 |   |
| 4.0  | .212                  | .110 | .032 | .207 | .108 | .032 | .198                            | .105 | .031 | .189 | .102 | .031 | .181 | .099 | .030 |   |
| 5.0  | .200                  | .102 | .029 | .195 | .100 | .029 | .187                            | .097 | .029 | .179 | .095 | .028 | .172 | .092 | .028 |   |
| 6.0  | .188                  | .094 | .027 | .184 | .093 | .027 | .177                            | .091 | .026 | .170 | .088 | .026 | .164 | .086 | .026 |   |
| 7.0  | .177                  | .088 | .025 | .174 | .087 | .025 | .167                            | .085 | .024 | .161 | .083 | .024 | .155 | .081 | .024 |   |
| 8.0  | .167                  | .082 | .023 | .164 | .081 | .023 | .158                            | .079 | .023 | .153 | .077 | .022 | .147 | .076 | .022 |   |
| 9.0  | .158                  | .077 | .021 | .156 | .076 | .021 | .150                            | .074 | .021 | .145 | .073 | .021 | .140 | .071 | .021 |   |
| 10.0 | .150                  | .072 | .020 | .147 | .071 | .020 | .143                            | .070 | .020 | .138 | .069 | .019 | .134 | .067 | .019 |   |

| ρcc  | 80%                   |      |      | 70%  |      |      | 50%  |      |      | 30%  |      |      | 10%  |      |      | 0 |
|------|-----------------------|------|------|------|------|------|--|------|------|------|------|------|------|------|------|---|
| ρw   | 50%                   | 30%  | 10%  | 50%  | 30%  | 10%  | 50%  | 30%  | 10%  | 50%  | 30%  | 10%  | 50%  | 30%  | 10%  | 0 |
| ρfc  | 20%                   |      |      | 20%  |      |      | 20%  |      |      | 20%  |      |      | 20%  |      |      | 0 |
| RCR  | RCR:Room Cavity Ratio |      |      |      |      |      | Ceiling Cavity Exitance Coefficients(CCEC) |      |      |      |      |      |      |      |      |   |
| 0.0  | .201                  | .201 | .201 | .172 | .172 | .172 | .117                                       | .117 | .117 | .067 | .067 | .067 | .022 | .022 | .022 |   |
| 1.0  | .187                  | .168 | .151 | .160 | .144 | .130 | .109                                       | .099 | .090 | .063 | .057 | .052 | .020 | .018 | .017 |   |
| 2.0  | .176                  | .143 | .116 | .151 | .123 | .100 | .103                                       | .085 | .070 | .060 | .050 | .041 | .019 | .016 | .013 |   |
| 3.0  | .167                  | .125 | .092 | .143 | .108 | .080 | .098                                       | .075 | .056 | .057 | .044 | .033 | .018 | .014 | .011 |   |
| 4.0  | .159                  | .111 | .075 | .136 | .096 | .065 | .094                                       | .067 | .046 | .054 | .039 | .027 | .017 | .013 | .009 |   |
| 5.0  | .152                  | .101 | .063 | .130 | .087 | .055 | .090                                       | .061 | .039 | .052 | .036 | .023 | .017 | .012 | .008 |   |
| 6.0  | .145                  | .092 | .054 | .124 | .080 | .047 | .086                                       | .056 | .033 | .050 | .033 | .020 | .016 | .011 | .007 |   |
| 7.0  | .139                  | .085 | .047 | .119 | .074 | .041 | .082                                       | .052 | .029 | .048 | .030 | .017 | .015 | .010 | .006 |   |
| 8.0  | .133                  | .079 | .042 | .114 | .069 | .037 | .079                                       | .048 | .026 | .046 | .028 | .016 | .015 | .009 | .005 |   |
| 9.0  | .127                  | .074 | .038 | .110 | .064 | .033 | .076                                       | .045 | .024 | .044 | .027 | .014 | .014 | .009 | .005 |   |
| 10.0 | .122                  | .070 | .035 | .105 | .061 | .031 | .073                                       | .043 | .022 | .043 | .025 | .013 | .014 | .008 | .004 |   |

C Range: 0 - 360DEG  
 C Interval: 22.5DEG  
 Test Speed: HIGH  
 Temperature:25DEG  
 Operators:  
 Test Date:2019-12-13

γ Range: 0 - 180DEG  
 γ Interval: 1.0DEG  
 Test System:EVERFINE GO-2000B\_V1 SYSTEM V2.0.407.13  
 Humidity:55%  
 Test Distance:6.244m [K=1.0000]  
 Remarks:

UGR(Unified Glare Rating) Table

|  |                  |      |      |      |       |                |      |                  |      |      |
|--|------------------|------|------|------|-------|----------------|------|------------------|------|------|
| Test:U:119.96V I:0.0885A P:9.8198W PF:0.9254 Freq:60.00Hz Lamp Flux:746.484x1 lm |                  |      |      |      |       |                |      |                  |      |      |
| NAME:  |                  |      |      |      | TYPE: |                |      | WEIGHT:          |      |      |
| SPEC.:   |                  |      |      |      | DIM.: |                |      | SERIAL No.:      |      |      |
| MFR.: WESTGATE   |                  |      |      |      | SUR.: |                |      | Shielding Angle: |      |      |
| ceiling/cavity   | 0.7              | 0.7  | 0.5  | 0.5  | 0.3   | 0.7            | 0.7  | 0.5              | 0.5  | 0.3  |
| walls  | 0.5              | 0.3  | 0.5  | 0.3  | 0.3   | 0.5            | 0.3  | 0.5              | 0.3  | 0.3  |
| working plane  | 0.2              | 0.2  | 0.2  | 0.2  | 0.2   | 0.2            | 0.2  | 0.2              | 0.2  | 0.2  |
| Room dimensions  | Viewed crosswise |      |      |      |       | Viewed endwise |      |                  |      |      |
| x = 2H y = 2H  | 19.9             | 21.2 | 20.1 | 21.4 | 21.6  | 19.9           | 21.2 | 20.2             | 21.4 | 21.7 |
| 3H   | 20.1             | 21.3 | 20.4 | 21.5 | 21.8  | 20.4           | 21.6 | 20.7             | 21.8 | 22.1 |
| 4H   | 20.1             | 21.2 | 20.4 | 21.5 | 21.7  | 20.4           | 21.6 | 20.7             | 21.8 | 22.1 |
| 6H   | 20.0             | 21.1 | 20.4 | 21.4 | 21.7  | 20.4           | 21.4 | 20.7             | 21.7 | 22.0 |
| 8H   | 20.0             | 21.0 | 20.3 | 21.3 | 21.6  | 20.3           | 21.3 | 20.7             | 21.6 | 21.9 |
| 12H  | 19.9             | 20.9 | 20.3 | 21.2 | 21.5  | 20.3           | 21.3 | 20.6             | 21.6 | 21.9 |
| 4H 2H  | 20.1             | 21.2 | 20.4 | 21.5 | 21.7  | 20.1           | 21.3 | 20.5             | 21.5 | 21.8 |
| 3H   | 20.4             | 21.4 | 20.8 | 21.7 | 22.0  | 20.7           | 21.7 | 21.1             | 22.0 | 22.3 |
| 4H   | 20.4             | 21.3 | 20.8 | 21.6 | 22.0  | 20.8           | 21.7 | 21.2             | 22.0 | 22.4 |
| 6H   | 20.4             | 21.1 | 20.8 | 21.5 | 21.9  | 20.8           | 21.5 | 21.2             | 21.9 | 22.3 |
| 8H   | 20.3             | 21.1 | 20.8 | 21.4 | 21.8  | 20.7           | 21.4 | 21.2             | 21.8 | 22.2 |
| 12H  | 20.3             | 20.9 | 20.7 | 21.4 | 21.8  | 20.7           | 21.3 | 21.1             | 21.7 | 22.2 |
| 8H 4H  | 20.4             | 21.1 | 20.8 | 21.5 | 21.9  | 20.7           | 21.4 | 21.1             | 21.8 | 22.2 |
| 6H   | 20.3             | 20.9 | 20.8 | 21.4 | 21.8  | 20.7           | 21.3 | 21.2             | 21.7 | 22.2 |
| 8H   | 20.3             | 20.8 | 20.8 | 21.3 | 21.8  | 20.7           | 21.2 | 21.2             | 21.7 | 22.1 |
| 12H  | 20.3             | 20.7 | 20.8 | 21.2 | 21.7  | 20.7           | 21.1 | 21.2             | 21.6 | 22.1 |
| 12H 4H   | 20.3             | 21.0 | 20.8 | 21.4 | 21.8  | 20.7           | 21.3 | 21.1             | 21.7 | 22.2 |
| 6H   | 20.3             | 20.8 | 20.8 | 21.3 | 21.7  | 20.7           | 21.2 | 21.2             | 21.6 | 22.1 |
| 8H   | 20.3             | 20.7 | 20.8 | 21.2 | 21.7  | 20.7           | 21.1 | 21.2             | 21.6 | 22.1 |
| Variations with the observer position at spacings:                               |                  |      |      |      |       |                |      |                  |      |      |
| S = 1.0H   | + 0.7 / - 1.0    |      |      |      |       | + 0.7 / - 0.9  |      |                  |      |      |
| 1.5H   | + 0.4 / - 0.4    |      |      |      |       | + 0.2 / - 0.5  |      |                  |      |      |
| 2.0H   | + 1.4 / - 1.7    |      |      |      |       | + 1.1 / - 1.3  |      |                  |      |      |

CIE Pub.117, 746.5 lm Total Lamp Luminous Flux Correct (8log(F/F0) = -1.0)  
 Area: 0.03 m2

C Range: 0 - 360DEG  
 C Interval: 22.5DEG  
 Test Speed: HIGH  
 Temperature:25DEG  
 Operators:  
 Test Date:2019-12-13

γ Range: 0 - 180DEG  
 γ Interval: 1.0DEG  
 Test System:EVERFINE GO-2000B\_V1 SYSTEM V2.0.407.13  
 Humidity:55%  
 Test Distance:6.244m [K=1.0000]  
 Remarks:

## UTILIZATION FACTORS TABLE

|  |       |                  |
|--|-------|------------------|
| Test:U:119.96V I:0.0885A P:9.8198W PF:0.9254 Freq:60.00Hz Lamp Flux:746.484x1 lm |       |                  |
| NAME:  | TYPE: | WEIGHT:          |
| SPEC.:   | DIM.: | SERIAL No.:      |
| MFR.: WESTGATE   | SUR.: | Shielding Angle: |

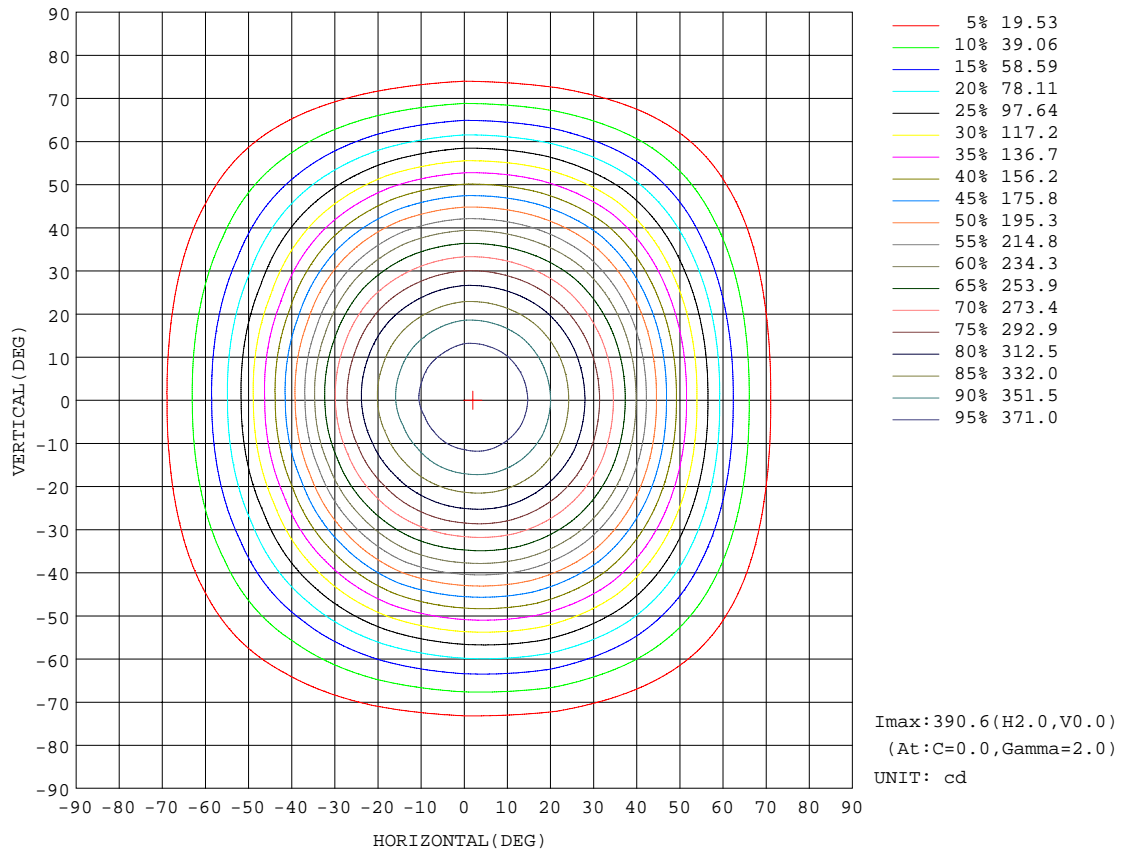
| REFLECTANCE                      |   |     |           |     |     |     |               |     |     |        |
|----------------------------------|---|-----|-----------|-----|-----|-----|---------------|-----|-----|--------|
| Ceiling                          | 0.8   | 0.8 | 0.8       | 0.7 | 0.7 | 0.7 | 0.5           | 0.5 | 0.5 | 0      |
| Walls                            | 0.7   | 0.5 | 0.3       | 0.7 | 0.5 | 0.3 | 0.7           | 0.5 | 0.3 | 0      |
| Working plane                    | 0.2   | 0.2 | 0.2       | 0.2 | 0.2 | 0.2 | 0.2           | 0.2 | 0.2 | 0      |
| ROOM INDEX                       | UTILIZATION FACTORS(PERCENT) $k(RI) \times RCR = 5$ |     |           |     |     |     |               |     |     |        |
| k = 0.60                         | 66  | 56  | 50        | 65  | 55  | 49  | 64            | 55  | 49  | 44     |
| 0.80                             | 76  | 66  | 60        | 75  | 66  | 60  | 73            | 65  | 59  | 53     |
| 1.00                             | 84  | 75  | 69        | 83  | 74  | 68  | 81            | 75  | 68  | 62     |
| 1.25                             | 90  | 82  | 76        | 89  | 81  | 76  | 86            | 80  | 75  | 69     |
| 1.50                             | 95  | 87  | 81        | 93  | 86  | 81  | 90            | 84  | 80  | 73     |
| 2.00                             | 100   | 94  | 89        | 99  | 93  | 88  | 95            | 90  | 86  | 79     |
| 2.50                             | 103   | 97  | 93        | 101 | 96  | 92  | 98            | 93  | 90  | 82     |
| 3.00                             | 106   | 101 | 96        | 104 | 99  | 95  | 100           | 96  | 93  | 85     |
| 4.00                             | 109   | 105 | 101       | 107 | 103 | 100 | 103           | 99  | 97  | 88     |
| 5.00                             | 111   | 107 | 104       | 109 | 105 | 102 | 104           | 101 | 99  | 90     |
| ROOM INDEX                       | UF(total)   |     |           |     |     |     |               |     |     | Direct |
| According to DIN EN 13032-2 2004 |   |     | Suspended |     |     |     | SHRNOM = 1.25 |     |     |        |

C Range: 0 - 360DEG  
 C Interval: 22.5DEG  
 Test Speed: HIGH  
 Temperature:25DEG  
 Operators:  
 Test Date:2019-12-13

$\gamma$  Range: 0 - 180DEG  
 $\gamma$  Interval: 1.0DEG  
 Test System:EVERFINE GO-2000B\_V1 SYSTEM V2.0.407.13  
 Humidity:55%  
 Test Distance:6.244m [K=1.0000]  
 Remarks:

ISOCANDELA DIAGRAM

|  |       |                  |
|--|-------|------------------|
| Test:U:119.96V I:0.0885A P:9.8198W PF:0.9254 Freq:60.00Hz Lamp Flux:746.484x1 lm |       |                  |
| NAME:  | TYPE: | WEIGHT:          |
| SPEC.:   | DIM.: | SERIAL No.:      |
| MFR.: WESTGATE   | SUR.: | Shielding Angle: |



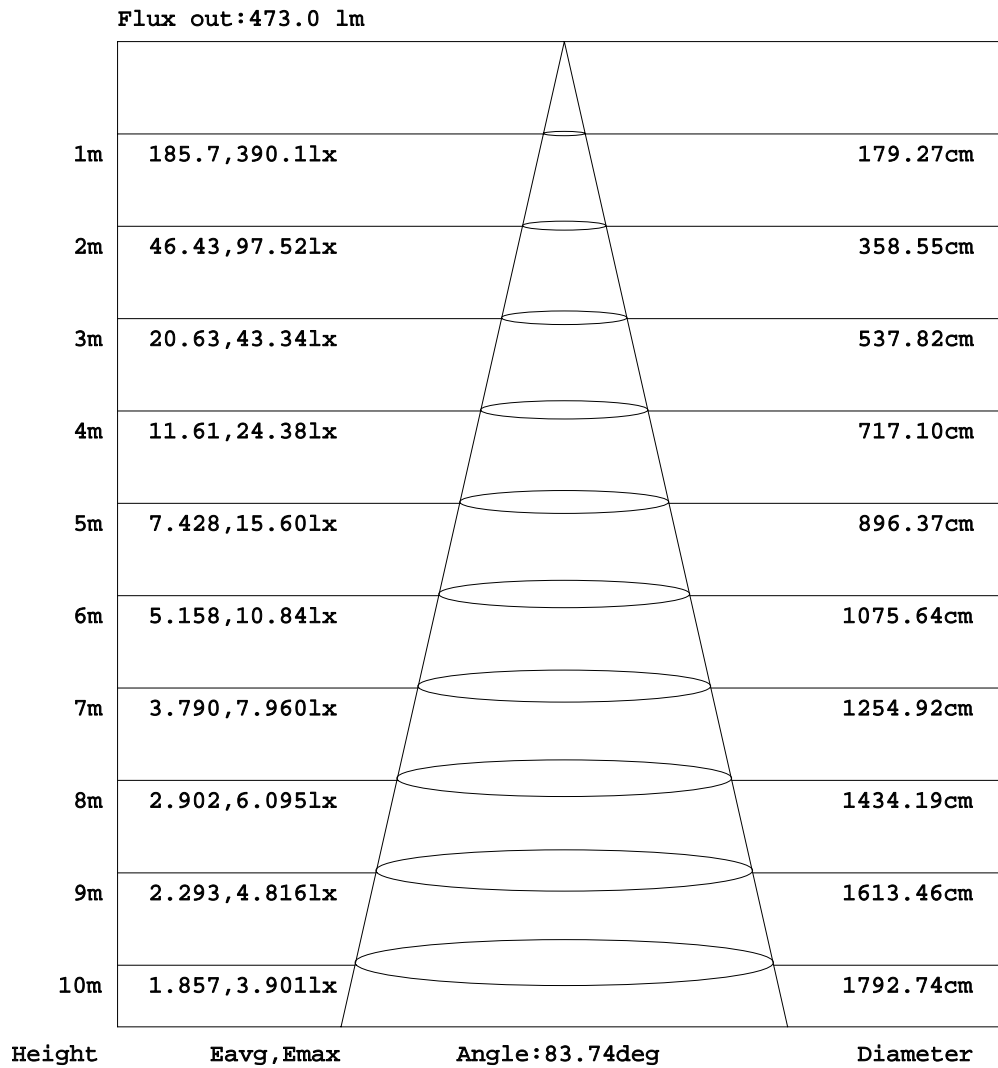
C Range: 0 - 360DEG  
 C Interval: 22.5DEG  
 Test Speed: HIGH  
 Temperature: 25DEG  
 Operators:  
 Test Date: 2019-12-13

γ Range: 0 - 180DEG  
 γ Interval: 1.0DEG  
 Test System: EVERFINE GO-2000B\_V1 SYSTEM V2.0.407.13  
 Humidity: 55%  
 Test Distance: 6.244m [K=1.0000]  
 Remarks:



AAI Figure

|  |       |                  |
|--|-------|------------------|
| Test:U:119.96V I:0.0885A P:9.8198W PF:0.9254 Freq:60.00Hz Lamp Flux:746.484x1 lm |       |                  |
| NAME:  | TYPE: | WEIGHT:          |
| SPEC.:   | DIM.: | SERIAL No.:      |
| MFR.: WESTGATE   | SUR.: | Shielding Angle: |



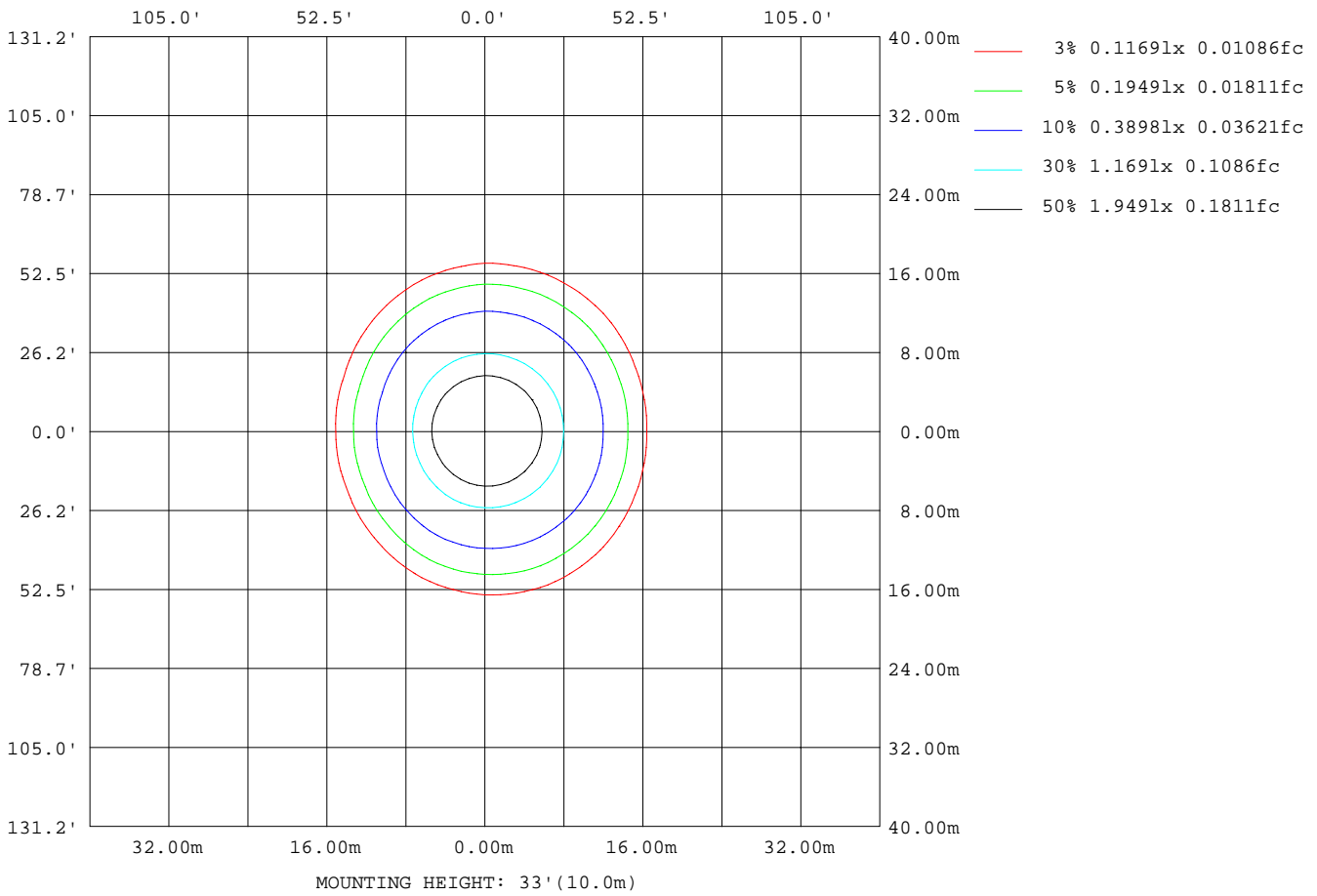
Note:The Curves indicate the illuminated area and the average illumination when the luminaire is at different distance.

C Range: 0 - 360DEG  
 C Interval: 22.5DEG  
 Test Speed: HIGH  
 Temperature:25DEG  
 Operators:  
 Test Date:2019-12-13

γ Range: 0 - 180DEG  
 γ Interval: 1.0DEG  
 Test System:EVERFINE GO-2000B\_V1 SYSTEM V2.0.407.13  
 Humidity:55%  
 Test Distance:6.244m [K=1.0000]  
 Remarks:

ISOLUX DIAGRAM

|  |       |                  |
|--|-------|------------------|
| Test:U:119.96V I:0.0885A P:9.8198W PF:0.9254 Freq:60.00Hz Lamp Flux:746.484x1 lm |       |                  |
| NAME:  | TYPE: | WEIGHT:          |
| SPEC.:   | DIM.: | SERIAL No.:      |
| MFR.: WESTGATE   | SUR.: | Shielding Angle: |



C Range: 0 - 360DEG  
 C Interval: 22.5DEG  
 Test Speed: HIGH  
 Temperature: 25DEG  
 Operators:  
 Test Date: 2019-12-13

$\gamma$  Range: 0 - 180DEG  
 $\gamma$  Interval: 1.0DEG  
 Test System: EVERFINE GO-2000B\_V1 SYSTEM V2.0.407.13  
 Humidity: 55%  
 Test Distance: 6.244m [K=1.0000]  
 Remarks:

## LED Avg.L Report

|  |       |                  |
|--|-------|------------------|
| Test:U:119.96V I:0.0885A P:9.8198W PF:0.9254 Freq:60.00Hz Lamp Flux:746.484x1 lm |       |                  |
| NAME:  | TYPE: | WEIGHT:          |
| SPEC.:   | DIM.: | SERIAL No.:      |
| MFR.: WESTGATE   | SUR.: | Shielding Angle: |

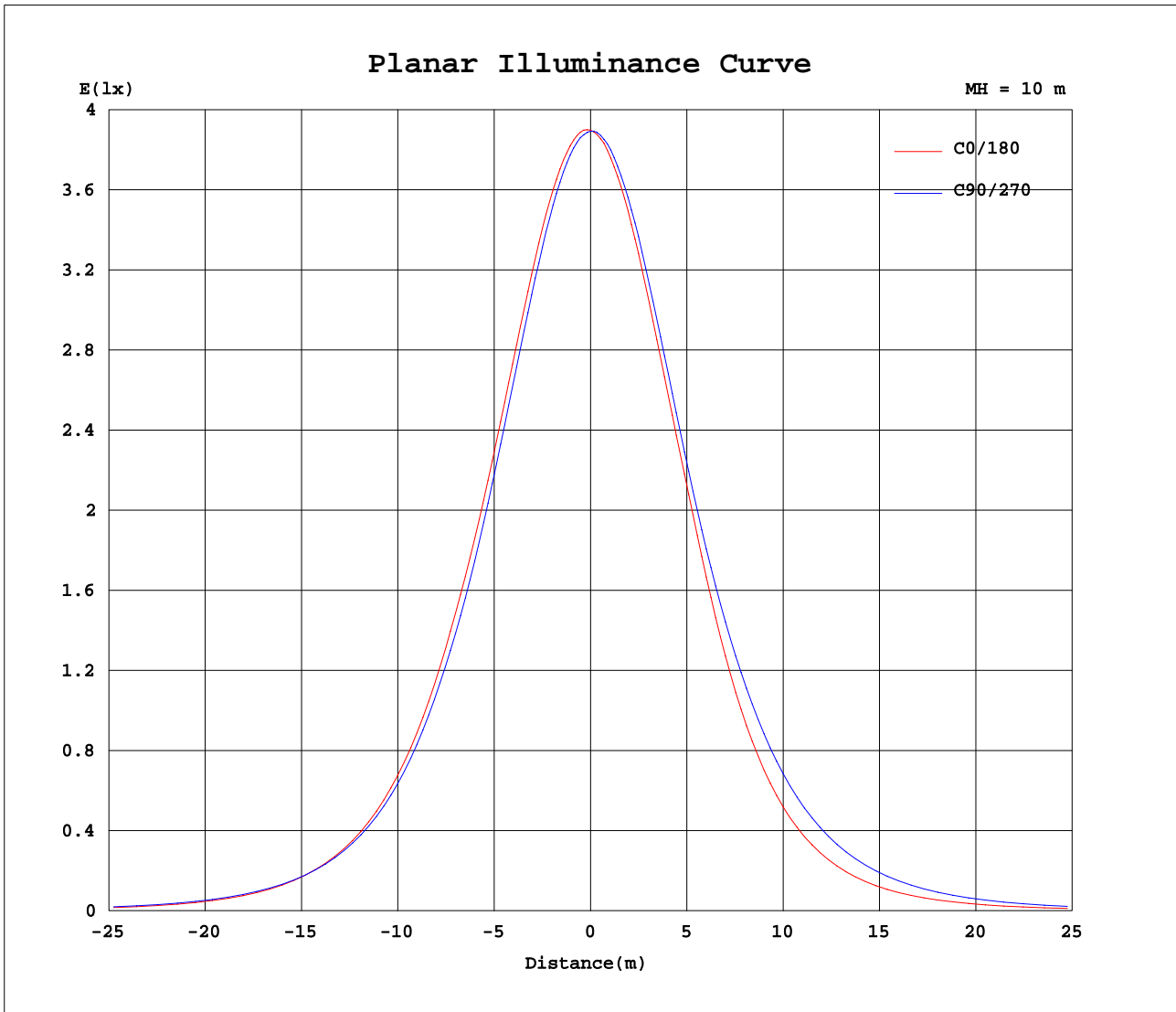
| AvgL           | cd/m2 |
|----------------|-------|
| L_0~180(65)av  | 2996  |
| L_0~180(75)av  | 1061  |
| L_0~180(85)av  | 255   |
| L_90~270(65)av | 4287  |
| L_90~270(75)av | 1995  |
| L_90~270(85)av | 473   |
| L_45(65)av     | 3624  |
| L_45(75)av     | 1406  |
| L_45(85)av     | 368   |

Standard: GB/T 29293-2012

C Range: 0 - 360DEG  
C Interval: 22.5DEG  
Test Speed: HIGH  
Temperature:25DEG  
Operators:  
Test Date:2019-12-13

$\gamma$  Range: 0 - 180DEG  
 $\gamma$  Interval: 1.0DEG  
Test System:EVERFINE GO-2000B\_V1 SYSTEM V2.0.407.13  
Humidity:55%  
Test Distance:6.244m [K=1.0000]  
Remarks:

Planar Illuminance Curve



C Range: 0 - 360DEG  
 C Interval: 22.5DEG  
 Test Speed: HIGH  
 Temperature: 25DEG  
 Operators:  
 Test Date: 2019-12-13

$\gamma$  Range: 0 - 180DEG  
 $\gamma$  Interval: 1.0DEG  
 Test System: EVERFINE GO-2000B\_V1 SYSTEM V2.0.407.13  
 Humidity: 55%  
 Test Distance: 6.244m [K=1.0000]  
 Remarks:

LUMINOUS DISTRIBUTION INTENSITY DATA

|  |       |                  |
|--|-------|------------------|
| Test:U:119.96V I:0.0885A P:9.8198W PF:0.9254 Freq:60.00Hz Lamp Flux:746.484x1 lm |       |                  |
| NAME:  | TYPE: | WEIGHT:          |
| SPEC.:   | DIM.: | SERIAL No.:      |
| MFR.: WESTGATE   | SUR.: | Shielding Angle: |

Table--1

UNIT: cd

| C(DEG)<br>γ (DEG) | 0    | 22.5 | 45   | 67.5 | 90   | 112.5 | 135  | 157.5 | 180  | 202.5 | 225  | 247.5 | 270  | 292.5 | 315  | 337.5 |  |  |  |
|-------------------|------|------|------|------|------|-------|------|-------|------|-------|------|-------|------|-------|------|-------|--|--|--|
| 0                 | 390  | 390  | 389  | 389  | 389  | 389   | 389  | 389   | 390  | 390   | 389  | 389   | 389  | 389   | 389  | 389   |  |  |  |
| 5                 | 389  | 389  | 388  | 387  | 385  | 384   | 383  | 383   | 384  | 384   | 385  | 386   | 387  | 388   | 389  | 389   |  |  |  |
| 10                | 382  | 382  | 380  | 378  | 375  | 373   | 371  | 371   | 373  | 373   | 375  | 376   | 379  | 380   | 382  | 383   |  |  |  |
| 15                | 370  | 369  | 367  | 364  | 359  | 356   | 354  | 353   | 355  | 357   | 359  | 362   | 365  | 367   | 369  | 370   |  |  |  |
| 20                | 352  | 351  | 348  | 344  | 338  | 334   | 331  | 330   | 333  | 334   | 338  | 341   | 345  | 348   | 350  | 351   |  |  |  |
| 25                | 328  | 327  | 324  | 319  | 313  | 308   | 304  | 303   | 306  | 308   | 313  | 316   | 321  | 324   | 326  | 328   |  |  |  |
| 30                | 301  | 300  | 296  | 291  | 284  | 278   | 273  | 270   | 273  | 276   | 284  | 288   | 293  | 296   | 299  | 301   |  |  |  |
| 35                | 271  | 270  | 266  | 260  | 252  | 246   | 237  | 230   | 231  | 237   | 249  | 257   | 262  | 265   | 269  | 270   |  |  |  |
| 40                | 233  | 234  | 232  | 226  | 218  | 211   | 198  | 188   | 188  | 195   | 211  | 223   | 230  | 233   | 236  | 235   |  |  |  |
| 45                | 192  | 193  | 193  | 188  | 180  | 172   | 158  | 147   | 147  | 154   | 171  | 185   | 194  | 197   | 199  | 195   |  |  |  |
| 50                | 149  | 152  | 154  | 151  | 143  | 134   | 120  | 110   | 109  | 116   | 133  | 147   | 157  | 160   | 160  | 154   |  |  |  |
| 55                | 109  | 112  | 116  | 115  | 108  | 99.7  | 86.9 | 78.1  | 77.4 | 82.5  | 97.2 | 111   | 121  | 123   | 121  | 113   |  |  |  |
| 60                | 73.0 | 76.0 | 81.2 | 82.4 | 77.2 | 69.6  | 59.0 | 52.3  | 51.8 | 55.4  | 66.8 | 78.9  | 87.6 | 88.2  | 85.4 | 77.1  |  |  |  |
| 65                | 44.1 | 46.7 | 51.4 | 54.1 | 50.8 | 44.9  | 36.8 | 32.6  | 31.9 | 34.4  | 41.6 | 51.0  | 57.9 | 57.7  | 53.9 | 47.2  |  |  |  |
| 70                | 23.1 | 25.1 | 28.3 | 31.3 | 30.0 | 25.9  | 20.4 | 17.2  | 16.5 | 18.1  | 22.9 | 28.7  | 33.9 | 33.1  | 29.7 | 25.3  |  |  |  |
| 75                | 9.50 | 10.2 | 12.3 | 15.0 | 14.5 | 12.3  | 8.43 | 7.06  | 6.98 | 7.29  | 9.72 | 13.3  | 16.4 | 15.7  | 13.2 | 10.3  |  |  |  |
| 80                | 4.32 | 4.59 | 5.00 | 5.71 | 4.09 | 4.94  | 3.71 | 3.18  | 3.08 | 3.27  | 4.16 | 5.31  | 5.81 | 5.89  | 5.25 | 4.61  |  |  |  |
| 85                | 0.93 | 0.97 | 1.20 | 1.83 | 1.02 | 1.37  | 0.60 | 0.46  | 0.40 | 0.41  | 0.72 | 1.58  | 1.45 | 1.90  | 1.33 | 0.99  |  |  |  |
| 90                | 0.36 | 0.40 | 0.38 | 0.43 | 0.44 | 0.47  | 0.44 | 0.43  | 0.32 | 0.31  | 0.34 | 0.32  | 0.32 | 0.31  | 0.26 | 0.28  |  |  |  |
| 95                | 0.54 | 0.59 | 0.50 | 0.57 | 0.61 | 0.63  | 0.61 | 0.60  | 0.47 | 0.46  | 0.48 | 0.46  | 0.46 | 0.40  | 0.38 | 0.47  |  |  |  |
| 100               | 0.60 | 0.65 | 0.68 | 0.76 | 0.79 | 0.82  | 0.80 | 0.80  | 0.64 | 0.63  | 0.66 | 0.63  | 0.62 | 0.55  | 0.53 | 0.48  |  |  |  |
| 105               | 0.81 | 0.85 | 0.87 | 0.97 | 1.00 | 1.04  | 1.02 | 1.03  | 0.84 | 0.84  | 0.84 | 0.83  | 0.80 | 0.74  | 0.69 | 0.66  |  |  |  |
| 110               | 1.01 | 1.06 | 1.10 | 1.18 | 1.24 | 1.27  | 1.25 | 1.27  | 1.07 | 1.07  | 1.06 | 1.04  | 1.01 | 0.94  | 0.89 | 0.86  |  |  |  |
| 115               | 1.26 | 1.31 | 1.34 | 1.41 | 1.47 | 1.51  | 1.51 | 1.51  | 1.31 | 1.29  | 1.29 | 1.25  | 1.23 | 1.15  | 1.11 | 1.09  |  |  |  |
| 120               | 1.54 | 1.56 | 1.61 | 1.67 | 1.72 | 1.77  | 1.79 | 1.79  | 1.56 | 1.56  | 1.55 | 1.50  | 1.46 | 1.38  | 1.35 | 1.31  |  |  |  |
| 125               | 1.79 | 1.87 | 1.87 | 1.94 | 1.99 | 2.03  | 2.02 | 2.04  | 1.81 | 1.80  | 1.81 | 1.75  | 1.71 | 1.63  | 1.59 | 1.59  |  |  |  |
| 130               | 2.12 | 2.11 | 2.12 | 2.20 | 2.26 | 2.28  | 2.30 | 2.29  | 2.10 | 2.02  | 2.05 | 2.00  | 1.98 | 1.89  | 1.83 | 1.81  |  |  |  |
| 135               | 2.39 | 2.36 | 2.39 | 2.43 | 2.48 | 2.48  | 2.50 | 2.52  | 2.30 | 2.25  | 2.27 | 2.22  | 2.20 | 2.11  | 2.06 | 2.05  |  |  |  |
| 140               | 2.63 | 2.58 | 2.55 | 2.63 | 2.67 | 2.73  | 2.71 | 2.74  | 2.55 | 2.47  | 2.46 | 2.44  | 2.40 | 2.33  | 2.25 | 2.29  |  |  |  |
| 145               | 2.80 | 2.73 | 2.74 | 2.82 | 2.89 | 2.92  | 2.91 | 2.91  | 2.70 | 2.65  | 2.63 | 2.64  | 2.61 | 2.54  | 2.47 | 2.47  |  |  |  |
| 150               | 2.91 | 2.90 | 2.93 | 2.97 | 3.03 | 3.06  | 3.08 | 3.09  | 2.88 | 2.85  | 2.83 | 2.80  | 2.78 | 2.70  | 2.67 | 2.66  |  |  |  |
| 155               | 3.10 | 3.17 | 3.10 | 3.24 | 3.20 | 3.25  | 3.24 | 3.35  | 3.08 | 3.12  | 3.02 | 3.03  | 2.97 | 2.98  | 2.87 | 2.93  |  |  |  |
| 160               | 3.31 | 3.39 | 3.29 | 3.36 | 3.37 | 3.45  | 3.43 | 3.51  | 3.30 | 3.31  | 3.23 | 3.26  | 3.17 | 3.14  | 3.07 | 3.16  |  |  |  |
| 165               | 3.46 | 3.49 | 3.48 | 3.48 | 3.53 | 3.57  | 3.58 | 3.60  | 3.51 | 3.45  | 3.40 | 3.41  | 3.36 | 3.30  | 3.29 | 3.32  |  |  |  |
| 170               | 3.57 | 3.58 | 3.59 | 3.62 | 3.62 | 3.65  | 3.68 | 3.68  | 3.61 | 3.58  | 3.56 | 3.53  | 3.51 | 3.48  | 3.44 | 3.44  |  |  |  |
| 175               | 3.70 | 3.72 | 3.76 | 3.74 | 3.73 | 3.76  | 3.78 | 3.76  | 3.74 | 3.74  | 3.73 | 3.68  | 3.66 | 3.66  | 3.64 | 3.63  |  |  |  |
| 180               | 3.78 | 3.78 | 3.79 | 3.75 | 3.74 | 3.75  | 3.75 | 3.72  | 3.78 | 3.77  | 3.80 | 3.77  | 3.77 | 3.77  | 3.78 | 3.76  |  |  |  |

C Range: 0 - 360DEG  
 C Interval: 22.5DEG  
 Test Speed: HIGH  
 Temperature: 25DEG  
 Operators:  
 Test Date: 2019-12-13

γ Range: 0 - 180DEG  
 γ Interval: 1.0DEG  
 Test System: EVERFINE GO-2000B\_V1 SYSTEM V2.0.407.13  
 Humidity: 55%  
 Test Distance: 6.244m [K=1.0000]  
 Remarks: