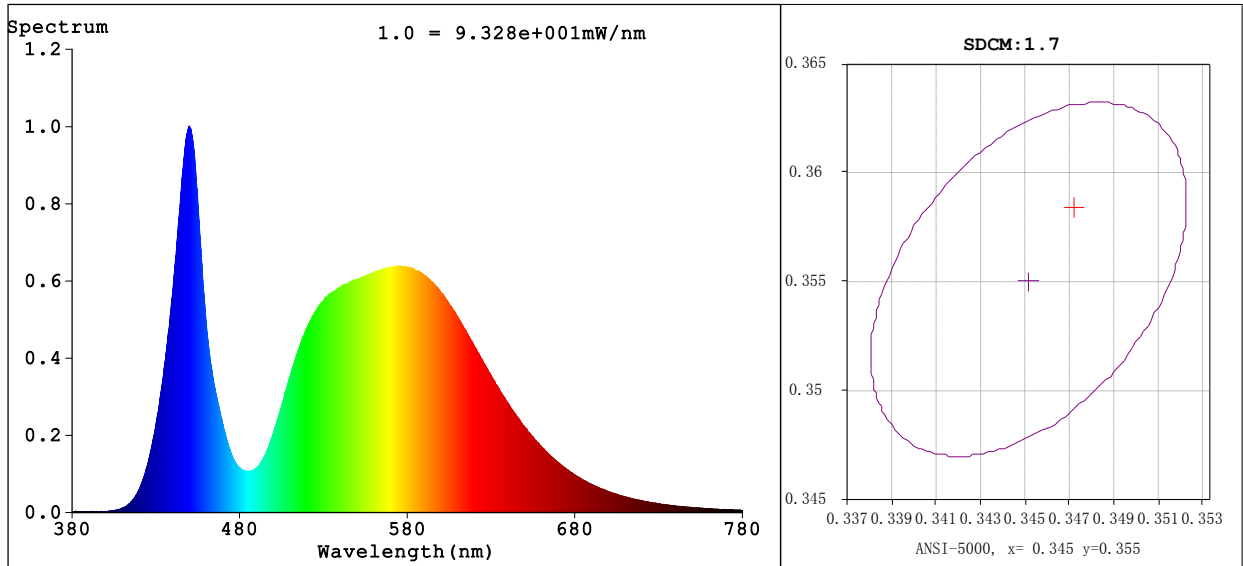


Spectrum Test Report



Colorimetric Parameters

Chromaticity Coordinate: $x=0.3468$ $y=0.3584$ $u'=0.2099$ $v'=0.4882$ $Dx, Dy: 0.0006, 0.0059$

CCT=4962K (Duv=0.0027) Dominant WL:Ld =570.7nm Purity=11.6%

Peak WL:Lp=449.8nm FWHM=21.5nm

Render Index:Ra=71.9 Render Index:AvgR =63.3

R1 =69 R2 =77 R3 =82 R4 =72 R5 =69 R6 =68 R7 =82

R8 =56 R9 =0 R10=45 R11=68 R12=38 R13=70 R14=90 R15=63

Photometric & Radiometric Parameters

Flux=3541 lm Eff.:119.74 lm/W Fe=10.38 W

Electrical parameters

V=120.0 V I=0.2824 A P=29.58 W PF=0.8728 F=59.98 Hz

频率=59.98 Hz

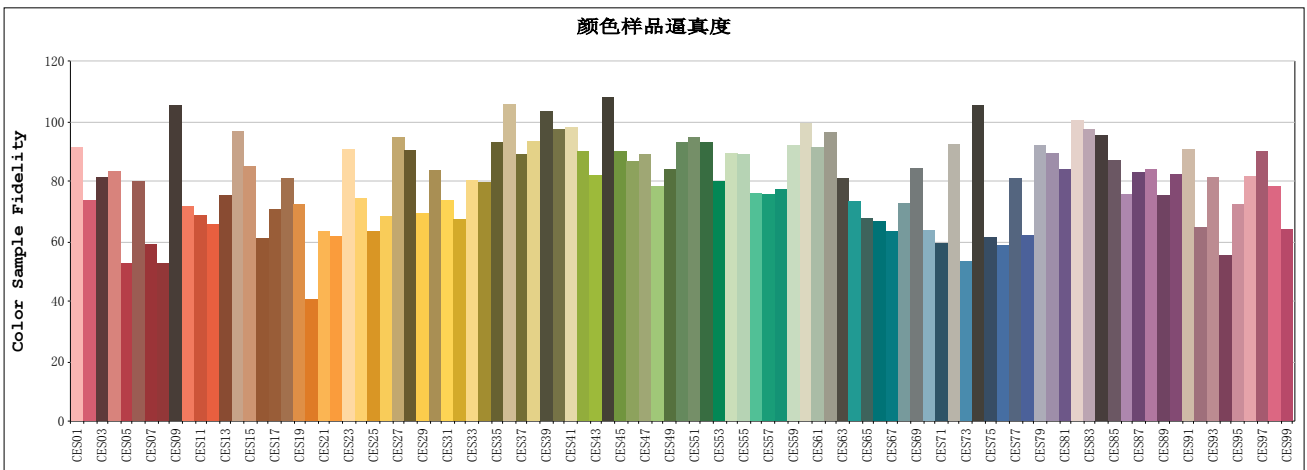
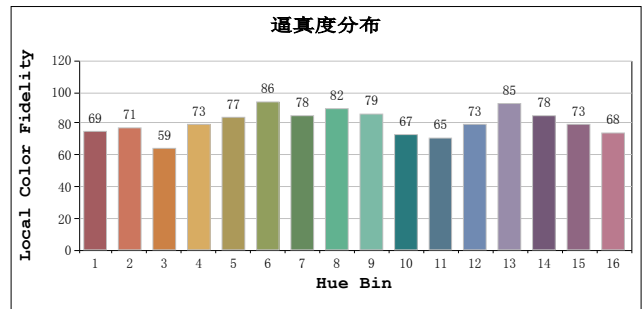
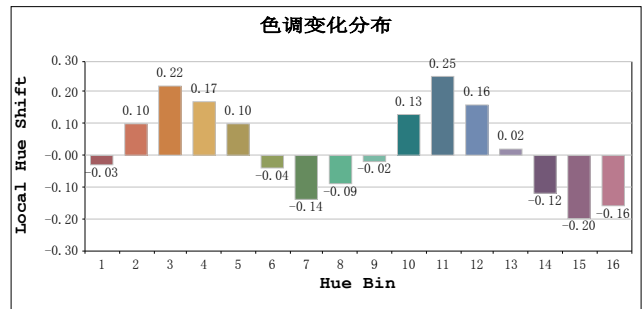
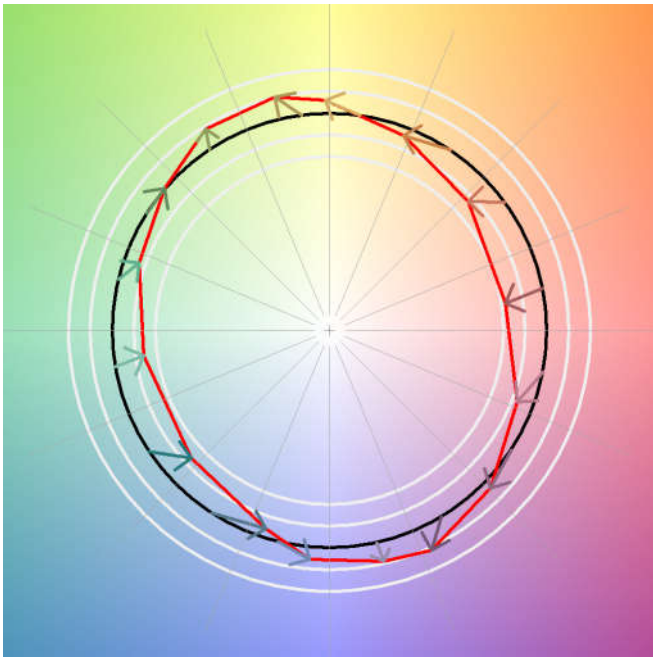
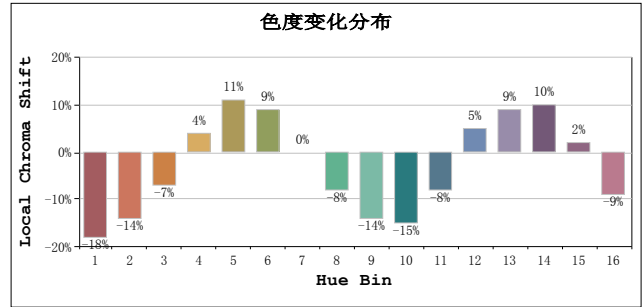
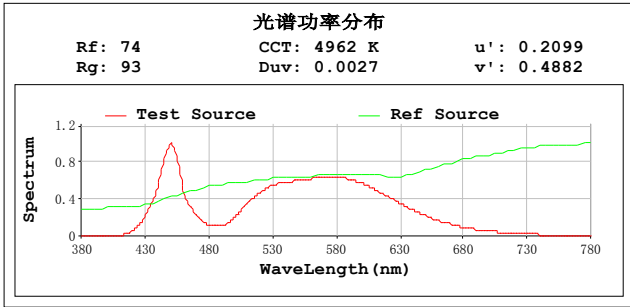
Status: Integral T = 194 ms Ip = 56063 (86%)

Test Mode: Fast Test; Sensitivity = High; Tecool: ON

Model:
Test By:DAMIN
Temperature:25.3Deg
Manufacturer:EVERFINE
Assessor:damin

Number:4
Date:2020-07-13 19:41:32
Humidity:65.0%
Remarks:

TM30



All Rf:

Rf1 = 83.8	Rf2 = 67.6	Rf3 = 74.6
Rf4 = 76.5	Rf5 = 48.3	Rf6 = 73.3
Rf7 = 54.1	Rf8 = 48.4	Rf9 = 96.7
Rf10 = 65.8	Rf11 = 63.1	Rf12 = 60.4
Rf13 = 69.1	Rf14 = 88.8	Rf15 = 78.1
Rf16 = 56.0	Rf17 = 65.0	Rf18 = 74.3
Rf19 = 66.2	Rf20 = 37.2	Rf21 = 58.1
Rf22 = 56.5	Rf23 = 83.3	Rf24 = 68.1
Rf25 = 58.2	Rf26 = 62.9	Rf27 = 86.7
Rf28 = 82.9	Rf29 = 63.6	Rf30 = 76.9
Rf31 = 67.5	Rf32 = 61.8	Rf33 = 73.6
Rf34 = 73.1	Rf35 = 85.5	Rf36 = 97.0
Rf37 = 81.6	Rf38 = 85.7	Rf39 = 94.8
Rf40 = 89.5	Rf41 = 89.9	Rf42 = 82.6
Rf43 = 75.2	Rf44 = 98.9	Rf45 = 82.6
Rf46 = 79.6	Rf47 = 81.8	Rf48 = 72.0
Rf49 = 77.3	Rf50 = 85.3	Rf51 = 86.8
Rf52 = 85.2	Rf53 = 73.5	Rf54 = 82.1
Rf55 = 81.7	Rf56 = 69.9	Rf57 = 69.4
Rf58 = 70.9	Rf59 = 84.6	Rf60 = 91.0
Rf61 = 83.7	Rf62 = 88.5	Rf63 = 74.2
Rf64 = 67.2	Rf65 = 62.1	Rf66 = 61.1
Rf67 = 58.3	Rf68 = 66.8	Rf69 = 77.5
Rf70 = 58.3	Rf71 = 54.5	Rf72 = 84.6
Rf73 = 49.0	Rf74 = 96.7	Rf75 = 56.4
Rf76 = 53.9	Rf77 = 74.5	Rf78 = 57.0
Rf79 = 84.4	Rf80 = 82.0	Rf81 = 77.1
Rf82 = 92.0	Rf83 = 89.1	Rf84 = 87.6
Rf85 = 79.8	Rf86 = 69.3	Rf87 = 76.1
Rf88 = 77.0	Rf89 = 69.0	Rf90 = 75.6
Rf91 = 83.3	Rf92 = 59.3	Rf93 = 74.6
Rf94 = 50.7	Rf95 = 66.3	Rf96 = 75.0
Rf97 = 82.7	Rf98 = 72.0	Rf99 = 58.7