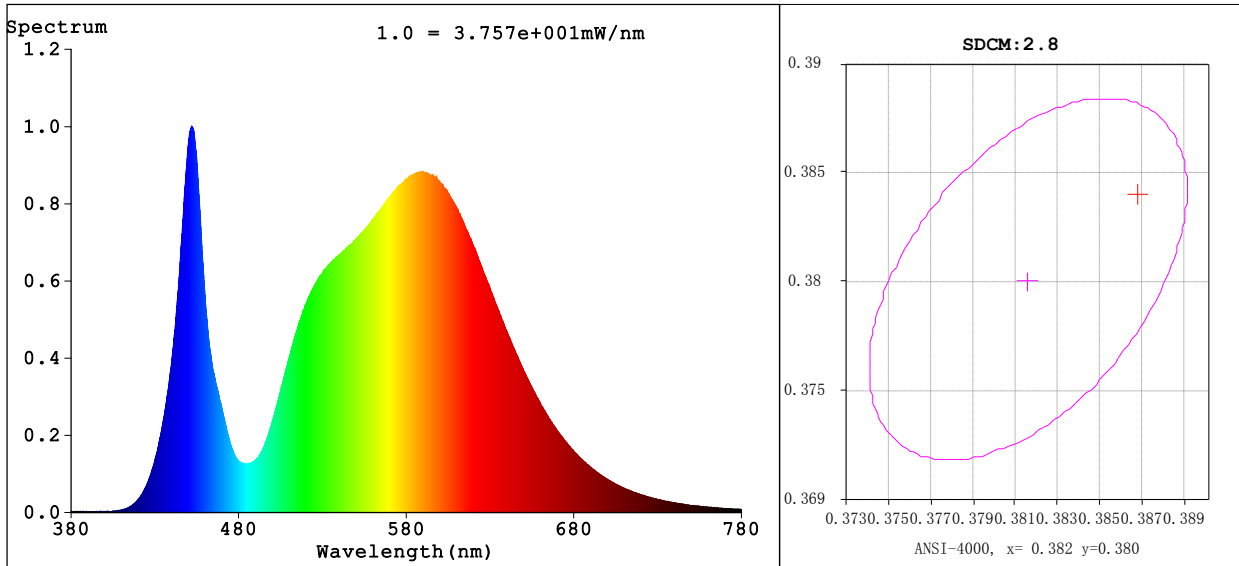


Spectrum Test Report



Colorimetric Parameters

Chromaticity Coordinate: $x=0.3870$ $y=0.3839$ $u'=0.2266$ $v'=0.5057$
 CCT=3880K (Duv=0.0015) Dominant WL:Ld =578.8nm Purity=31.4%
 Peak WL:Lp=452.1nm FWHM=18.6nm
 Render Index:Ra=74.6 Render Index:AvgR =66.5
 R1 =72 R2 =82 R3 =89 R4 =73 R5 =71 R6 =74 R7 =82
 R8 =54 R9 =0 R10=56 R11=69 R12=43 R13=74 R14=94 R15=65

Photometric & Radiometric Parameters

Flux=1832 lm Eff.:116.23 lm/W Fe=5.236 W

Electrical parameters

V=120.0 V I=0.1325 A P=15.76 W PF=0.9914 F=59.98 Hz
 频率=59.98 Hz

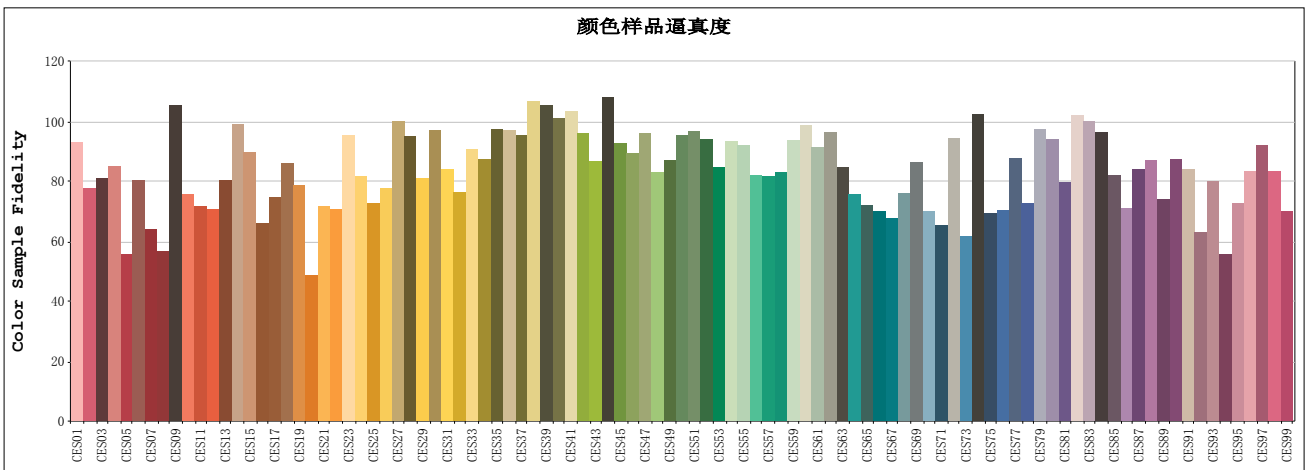
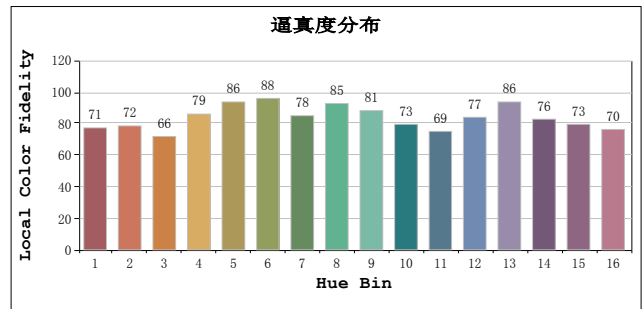
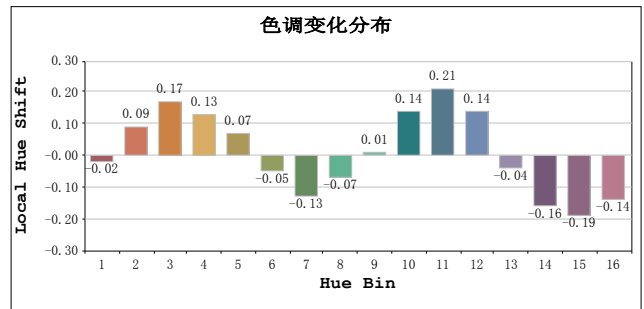
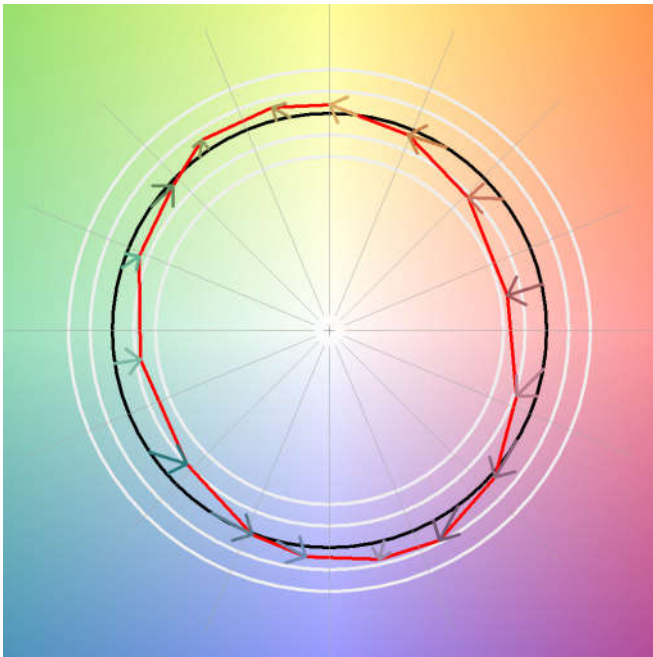
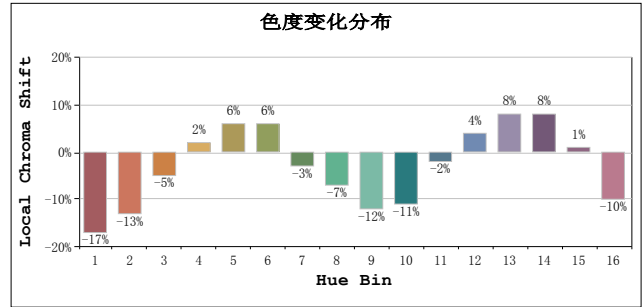
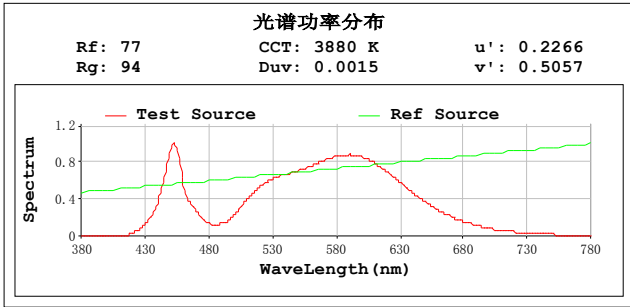
Status: Integral T = 374 ms Ip = 52764 (81%)

Test Mode: Fast Test; Sensitivity = High; Tecool: ON

Model:
 Test By:DAMIN
 Temperature:25.3Deg
 Manufacturer:EVERFINE
 Assessor:damin

Number:2
 Date:2020-08-28 20:44:47
 Humidity:65.0%
 Remarks:

TM30



All Rf:

Rf1 = 85.3	Rf2 = 71.3	Rf3 = 74.5
Rf4 = 78.1	Rf5 = 51.0	Rf6 = 73.7
Rf7 = 58.7	Rf8 = 52.1	Rf9 = 96.8
Rf10 = 69.4	Rf11 = 65.7	Rf12 = 64.8
Rf13 = 73.7	Rf14 = 90.7	Rf15 = 82.2
Rf16 = 60.6	Rf17 = 68.6	Rf18 = 78.8
Rf19 = 72.2	Rf20 = 44.8	Rf21 = 65.8
Rf22 = 64.9	Rf23 = 87.5	Rf24 = 75.0
Rf25 = 66.6	Rf26 = 71.4	Rf27 = 91.7
Rf28 = 87.3	Rf29 = 74.5	Rf30 = 88.9
Rf31 = 77.2	Rf32 = 69.9	Rf33 = 83.1
Rf34 = 80.3	Rf35 = 89.5	Rf36 = 88.9
Rf37 = 87.5	Rf38 = 97.8	Rf39 = 96.7
Rf40 = 92.6	Rf41 = 94.7	Rf42 = 88.2
Rf43 = 79.5	Rf44 = 99.2	Rf45 = 85.2
Rf46 = 82.0	Rf47 = 88.0	Rf48 = 76.1
Rf49 = 79.8	Rf50 = 87.4	Rf51 = 88.6
Rf52 = 86.2	Rf53 = 77.6	Rf54 = 85.5
Rf55 = 84.6	Rf56 = 75.3	Rf57 = 74.9
Rf58 = 76.2	Rf59 = 86.0	Rf60 = 90.5
Rf61 = 83.7	Rf62 = 88.3	Rf63 = 77.8
Rf64 = 69.6	Rf65 = 66.0	Rf66 = 64.2
Rf67 = 61.9	Rf68 = 69.9	Rf69 = 79.3
Rf70 = 64.3	Rf71 = 60.0	Rf72 = 86.6
Rf73 = 56.6	Rf74 = 94.0	Rf75 = 63.8
Rf76 = 64.7	Rf77 = 80.5	Rf78 = 66.5
Rf79 = 89.3	Rf80 = 86.2	Rf81 = 73.3
Rf82 = 93.7	Rf83 = 91.9	Rf84 = 88.5
Rf85 = 75.2	Rf86 = 65.1	Rf87 = 77.1
Rf88 = 80.0	Rf89 = 68.0	Rf90 = 80.1
Rf91 = 77.3	Rf92 = 57.8	Rf93 = 73.4
Rf94 = 51.1	Rf95 = 66.7	Rf96 = 76.6
Rf97 = 84.6	Rf98 = 76.4	Rf99 = 64.2