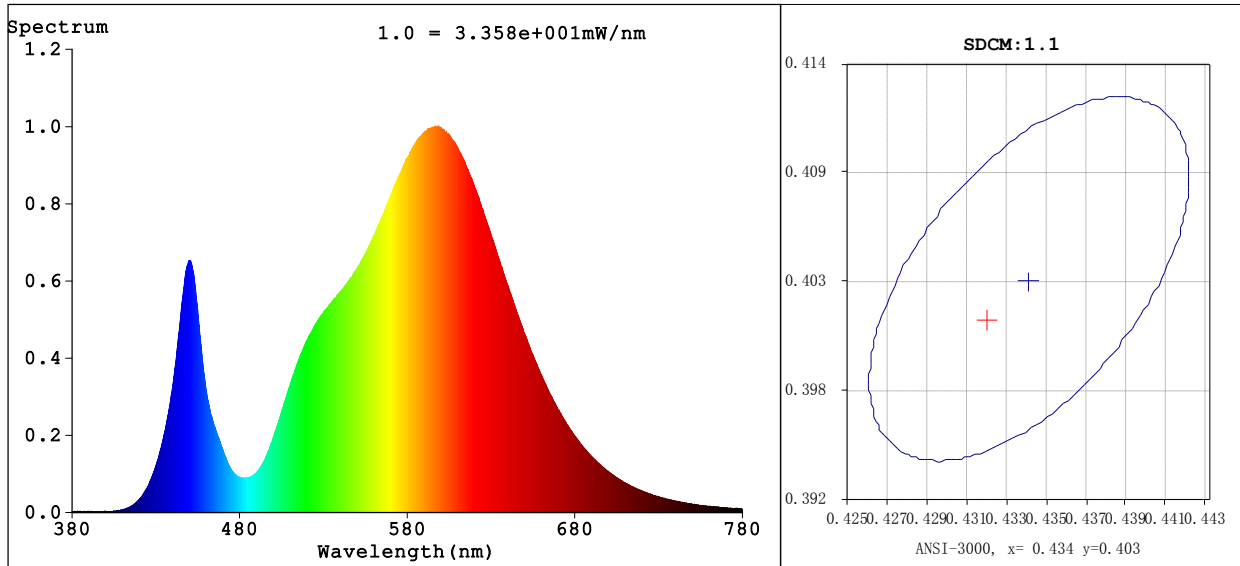


**Spectrum Test Report**



**Colorimetric Parameters**

Chromaticity Coordinate:  $x=0.4318$   $y=0.4014$  /  $u'=0.2484$   $v'=0.5195$   
 CCT=3066K (Duv=-0.0004) Dominant WL:Ld =582.7nm Purity=50.1%  
 Peak WL:Lp=598.8nm FWHM=120.0nm  
 Render Index:Ra=73.8 Render Index:AvgR =66.7  
 R1 =71 R2 =83 R3 =93 R4 =71 R5 =70 R6 =77 R7 =79  
 R8 =47 R9 =0 R10=60 R11=67 R12=50 R13=73 R14=96 R15=63

**Photometric & Radiometric Parameters**

Flux=1629 lm Eff.:110.02 lm/W Fe=4.638 W

**Electrical parameters**

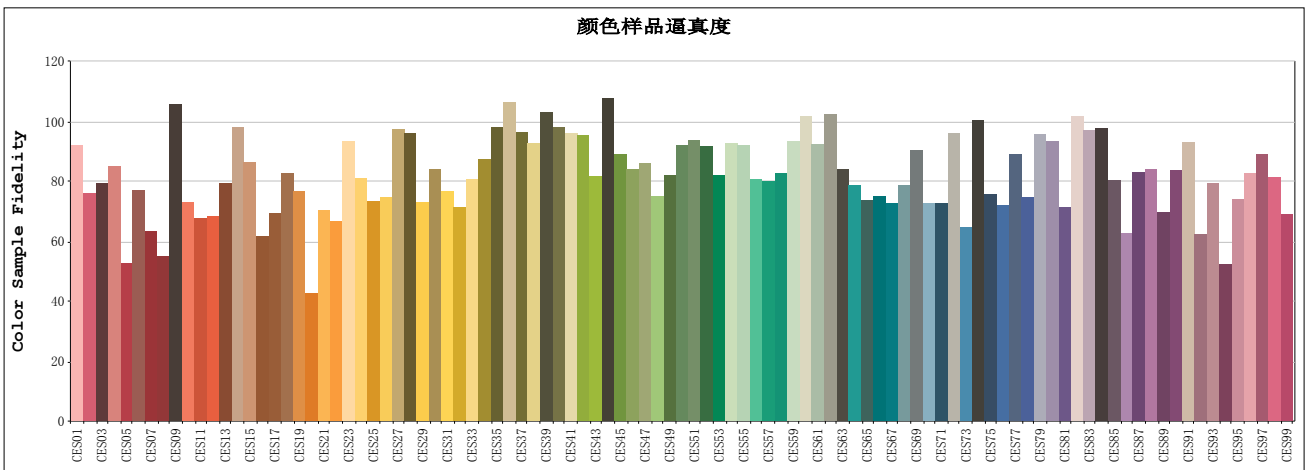
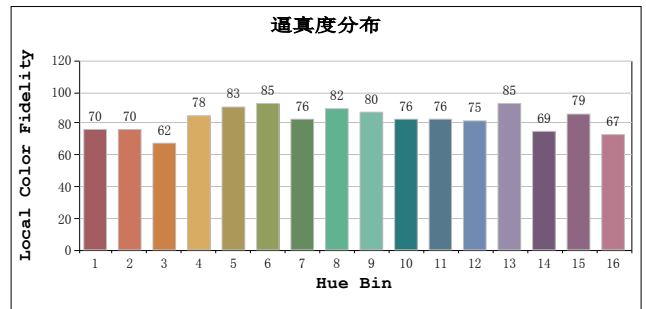
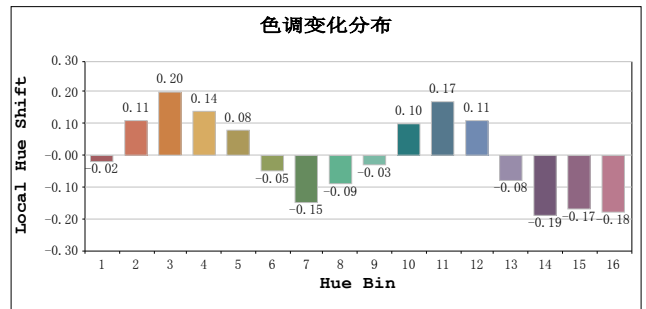
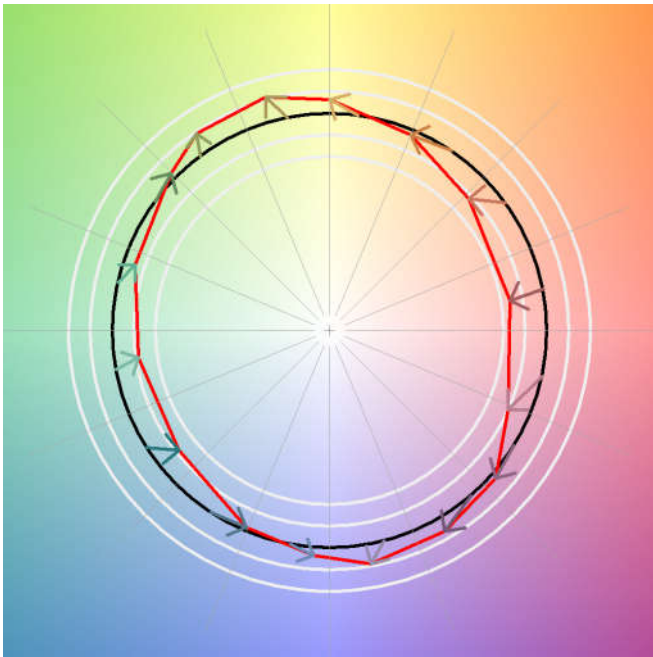
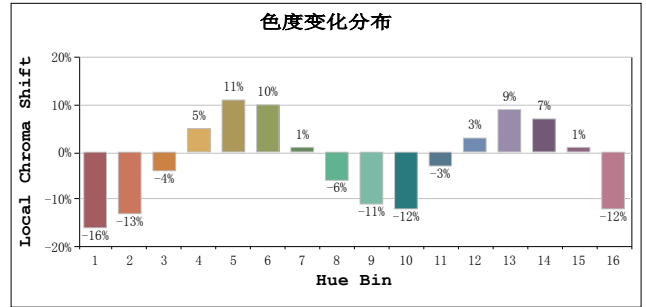
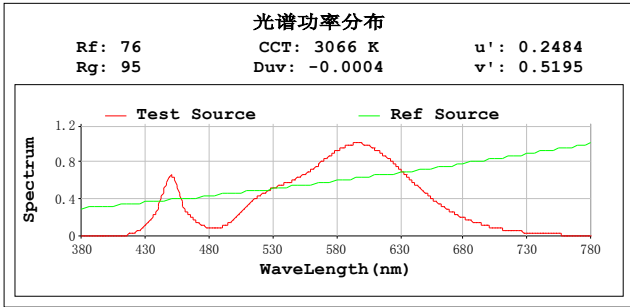
V=120.0 V I=0.1254 A P=14.80 W PF=0.9838 F=59.98 Hz  
 频率=59.98 Hz

Status: Integral T = 374 ms Ip = 51918 (79%)

Test Mode: Fast Test; Sensitivity = High; Tecool: ON

Model: Number:1  
 Test By:DAMIN Date:2020-08-28 19:42:31  
 Temperature:25.3Deg Humidity:65.0%  
 Manufacturer:EVERFINE Remarks:  
 Assessor:damin

# TM30



## All Rf:

Rf1 = 84.5	Rf2 = 69.9	Rf3 = 72.9
Rf4 = 78.0	Rf5 = 48.5	Rf6 = 70.6
Rf7 = 58.0	Rf8 = 50.4	Rf9 = 97.0
Rf10 = 66.9	Rf11 = 62.0	Rf12 = 62.8
Rf13 = 72.9	Rf14 = 90.1	Rf15 = 79.2
Rf16 = 56.6	Rf17 = 63.6	Rf18 = 75.7
Rf19 = 70.4	Rf20 = 39.2	Rf21 = 64.5
Rf22 = 61.0	Rf23 = 85.7	Rf24 = 74.4
Rf25 = 67.2	Rf26 = 68.4	Rf27 = 89.3
Rf28 = 88.0	Rf29 = 67.1	Rf30 = 77.1
Rf31 = 70.3	Rf32 = 65.4	Rf33 = 74.0
Rf34 = 80.1	Rf35 = 90.0	Rf36 = 97.7
Rf37 = 88.5	Rf38 = 85.1	Rf39 = 94.5
Rf40 = 90.1	Rf41 = 88.1	Rf42 = 87.4
Rf43 = 74.8	Rf44 = 98.8	Rf45 = 81.7
Rf46 = 77.2	Rf47 = 79.0	Rf48 = 68.9
Rf49 = 75.2	Rf50 = 84.6	Rf51 = 85.8
Rf52 = 84.1	Rf53 = 75.2	Rf54 = 85.1
Rf55 = 84.6	Rf56 = 74.1	Rf57 = 73.5
Rf58 = 75.8	Rf59 = 85.7	Rf60 = 93.2
Rf61 = 84.8	Rf62 = 93.9	Rf63 = 77.1
Rf64 = 72.4	Rf65 = 67.6	Rf66 = 68.8
Rf67 = 66.8	Rf68 = 72.2	Rf69 = 82.9
Rf70 = 66.8	Rf71 = 66.6	Rf72 = 88.1
Rf73 = 59.5	Rf74 = 92.1	Rf75 = 69.5
Rf76 = 66.2	Rf77 = 81.8	Rf78 = 68.6
Rf79 = 87.9	Rf80 = 85.7	Rf81 = 65.4
Rf82 = 93.4	Rf83 = 88.9	Rf84 = 89.8
Rf85 = 73.7	Rf86 = 57.6	Rf87 = 76.1
Rf88 = 77.2	Rf89 = 63.9	Rf90 = 76.6
Rf91 = 85.5	Rf92 = 57.4	Rf93 = 72.9
Rf94 = 47.9	Rf95 = 67.8	Rf96 = 75.9
Rf97 = 81.7	Rf98 = 74.7	Rf99 = 63.3