

WMV

A11



TECHNICAL SPECIFICATIONS:

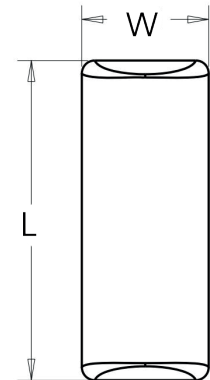
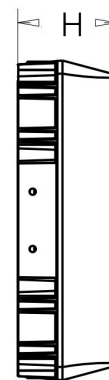
- :: Aluminum housing, outdoor powder coated
- :: Optical Lens: High transmittance PC, Anti-UV & Fire resistant
- :: 100-277V AC, 60Hz
- :: Vandal resistant housing & high impact PC lens, ideal for exposed areas
- :: CRI: >70
- :: Beam Angle: 110°X130°
- :: Power Factor: 90%
- :: Operating Temp: -4°F to 104°F
- :: 70,000 hour rated life
- :: 7-year warranty
- :: Suitable for Wet Locations, IP54

APPLICATIONS:

- :: Ideal for general site lighting, loading docks, doorway, pathway and parking areas.



OPTIONS
PHOTOCELL
MOTION SENSOR
BATTERY BACKUP
FIXTURE COLOR



LED VERSATILE WALL PACKS

CATALOG NO.	WATTS	LUMENS	COLOR TEMP	REPLACEMENT RANGE	DIMENSIONS
WMV-20W-50K	20W	2000LM	5000K	50~100 MH	11.4"(L) x 4.5"(W) x 3.5"(H)
WMV-20W-40K	20W	1900LM	4000K	50~100 MH	
WMV-20W-30K	20W	1800LM	3000K	50~100 MH	