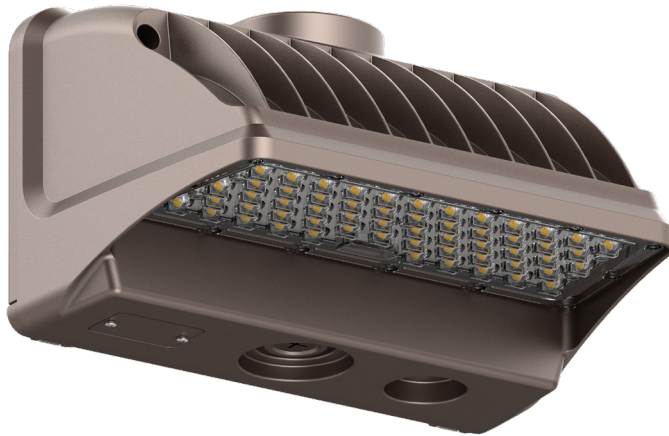


WPX
MCTP



WPX-42W-MCTP



WPX-80W-MCTP

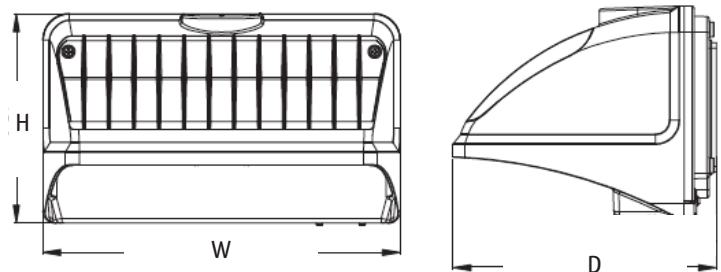
- OPTIONS
- PHOTOCELL
- MOTION SENSOR
- BATTERY BACKUP
- FIXTURE COLOR

TECHNICAL SPECIFICATIONS:

- :: Multi CCT and Power (Switches are inside fixture)
- :: The Type II Distribution Is Used for Wide WalkWays, on Ramps and Entrance Roadways, As Well As Other Long, Narrow Lighting
- :: Die-Cast Aluminum With Powder Coat Finish (Dark Bronze)
- :: High Light Transmittance, Anti-UV and Fire Resistant Shatterproof PC Lens
- :: Voltage: 120-277V AC, 50/60Hz
- :: Beam angle: 80° x 100°
- :: CRI: >80
- :: Power Factor: 95%
- :: Operating Temperature: -4°F to 104°F
- :: Life Span: 70,000 hours
- :: IP Rating: IP65
- :: Suitable for Wet Locations, IP65
- :: 7-year warranty

APPLICATIONS:

::LED Wall Pack Light series can be widely used as Exterior or Interior LED lighting for Hotels, Garages, Commercial Buildings, Public areas, Schools and Hospitals, etc.



LED X-GEN CUT-OFF TUNABLE WALL PACK

| CATALOG NO. | WATTS | LPW | COLOR TEMP | DIMENSIONS |
|--------------|-----------------|---------|-------------------|--------------------------------------|
| WPX-42W-MCTP | 11W/21W/32W/42W | 135LM/W | 3000K/4000K/5000K | 9 2/3" (W) x 5 3/4" (H) x 7 1/3" (D) |
| WPX-80W-MCTP | 20W/40W/60W/80W | 135LM/W | 3000K/4000K/5000K | 11 4/5" (W) x 7" (H) x 8 3/4" (D) |