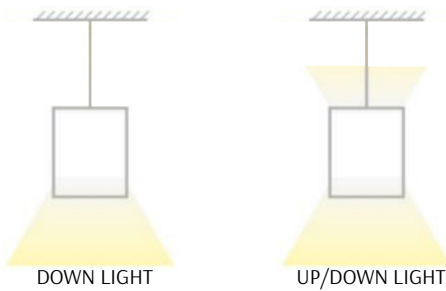
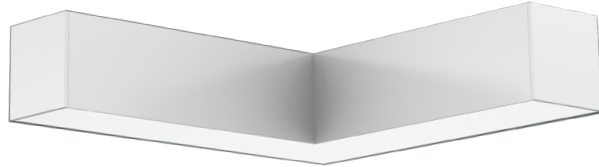


SCX-L

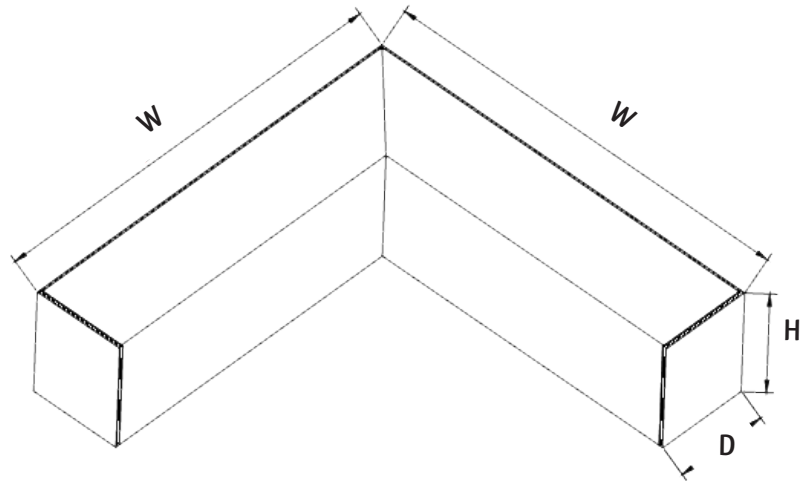
MCT4

TECHNICAL SPECIFICATIONS:

- :: MCT: Multi Color Temperature (Selectable Switch Inside Fixture)
- :: Aluminum Housing With Matte White Finish
- :: Lens Type: Opal Polycarbonate Lens
- :: Beam Angle: 104.8°(H) x 100.5°(V)
- :: Voltage: 120-277V AC 50/60Hz
- :: Dimmable: 0~10V dimmable
- :: CRI:>80
- :: Power Factor:>0.95
- :: Ambient Temperature: -13°F~104°F
- :: Life Span: 50,000 hours
- :: IP Rating: IP54
- :: 5-year warranty



- OPTIONS**
- DAYLIGHT HARVESTING
 - MOTION SENSOR
 - BATTERY BACKUP
 - FIXTURE COLOR



Optional Accessories (See Page B37)

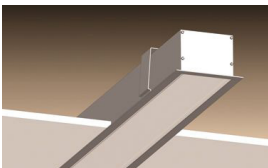


6 Ft. Cord
SJTW 18 AWG 5-Conductor
(Not Included)

LED SUPERIOR ARCHITECTURAL LIGHTS

CATALOG NO.	WATTS	LPW	COLOR TEMP	DIMENSIONS
SCX-L1FT-20W-MCT4-D	20W	111LM/W	3000K/3500K/4000K/5000K	12 1/3"(L) x 3 1/3"(W) x 2 3/4"(H)
SCX-L2FT-40W-MCT4-D	40W	120LM/W	3000K/3500K/4000K/5000K	24 1/3"(L) x 3 1/3"(W) x 2 3/4"(H)

B12



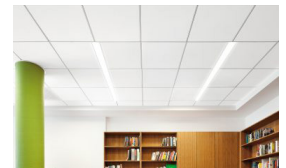
Recessed Mounted
(Flanged)



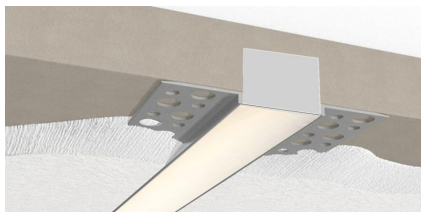
Surface Mounted



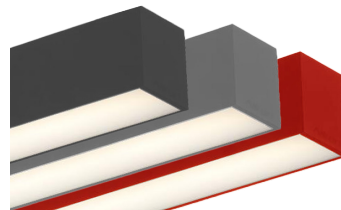
Wall Mounted



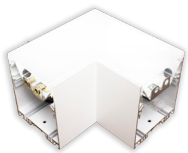
T-Bar Installation



Flangless Recessed Mounted
(Mud-In)



Color of Your Choice



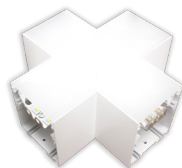
L Module

SCX-L-MCT4



T Module

SCX-T-MCT4



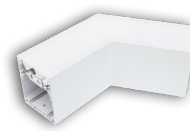
X Module

SCX-X-MCT4



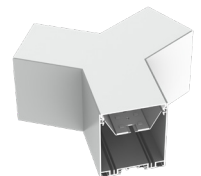
Inside Corner Module

SCX-IC-MCT4



120° Corner Module

SCX-C120-MCT4



Y Module

SCX-Y-MCT4