

FLH

A32

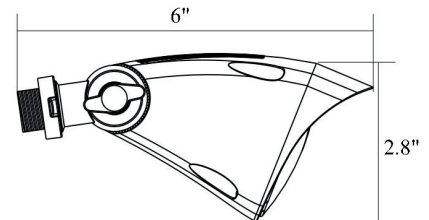
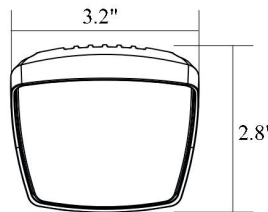
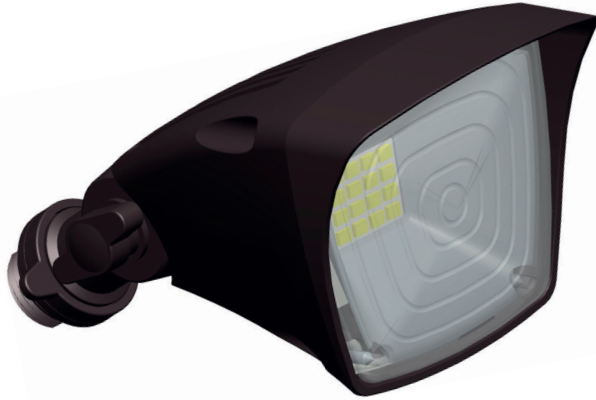
120V

TECHNICAL SPECIFICATIONS:

- :: Die-cast aluminum with powder coat finish
- :: Cover type: Transparent PC
- :: White Reflector
- :: Driver: Non-dimmable driver
- :: Cord type: 13" #18 AWG stranded wires
- :: Power: 10W
- :: Lumens: 950LM
- :: Light Efficiency: 95LM/W
- :: Voltage: 120-277V, 50/60Hz
- :: CRI: >80
- :: Source: COB
- :: Beam Angle: 100°
- :: IP Rating: Wet Location
- :: Rotating directional hood
- :: 70,000 hour rated life
- :: Suitable for Wet Locations, IP65
- :: 7-year warranty

APPLICATIONS:

- :: A modern replacement for weatherproof PAR38 lamp holders and 100W quartz fixtures



120V LED WEATHERPROOF FLOOD HEADS

| CATALOG NO. | WATTS | LUMENS | COLOR TEMP | FINISH | DIMENSIONS |
|----------------|-------|--------|------------|--------|---------------------------|
| FLH-10W-30K-BR | 10W | 950LM | 3000K | Bronze | 6"(L) x 2.8"(W) x 2.8"(H) |
| FLH-10W-50K-BR | 10W | 950LM | 5000K | Bronze | |
| FLH-10W-30K-WH | 10W | 950LM | 3000K | White | |
| FLH-10W-50K-WH | 10W | 950LM | 5000K | White | |