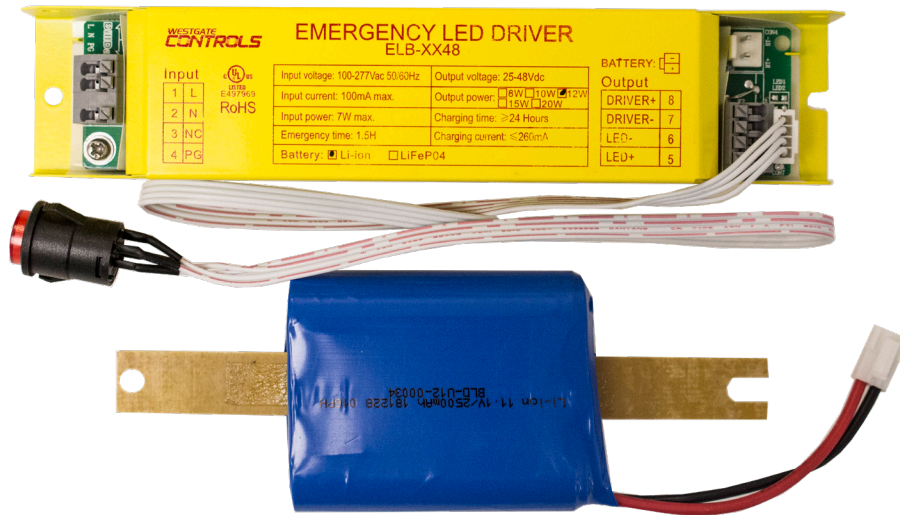


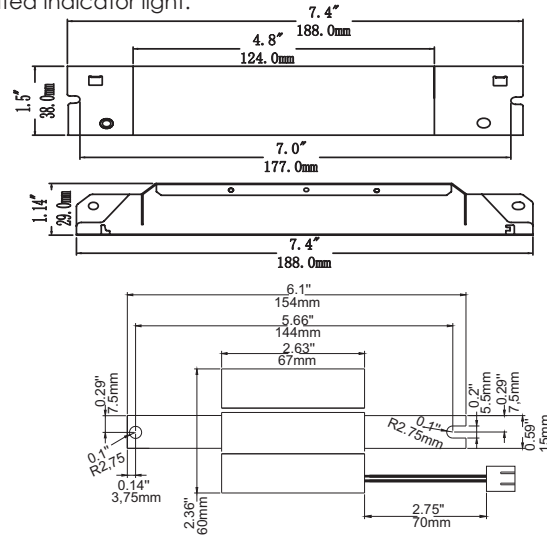
12W SPLIT



ELB-1248 is a CEC-Compliant, UL-Listed and approved for field installation emergency lighting system for fixtures with **Isolated** drivers. For use with LED modules driven by a constant current source. The complete split system includes the EM driver, battery charger, battery, test switch with integrated indicator light.

Applications:

- Indoor suspended and surface mount lights
- Ceiling fixtures
- Linear high bay fixtures



ELB-1248

Input Voltage	120~277V AC, 50-60Hz
Input Current	100mA Max.
Input Power	7W Max.
Output Classification	Class II
Output Voltage	25-48V DC
Output Current	250-480mA
Output Power	12W Max.
No Load Power Loss	≤ 0.5W
Surge Protection	L-N 1KV
Over Current Protection	Fuse
Emergency Duration	90 Minutes
Battery	Li-ion (Lithium-ion), 11.1V / 2500mAh
Charging Time	≥ 24Hrs.
Operating Temperature	32°F ~ 104°F
Test Switch	Test Switch w/ Integrated Indicator Light
Weight	0.73 lbs.

