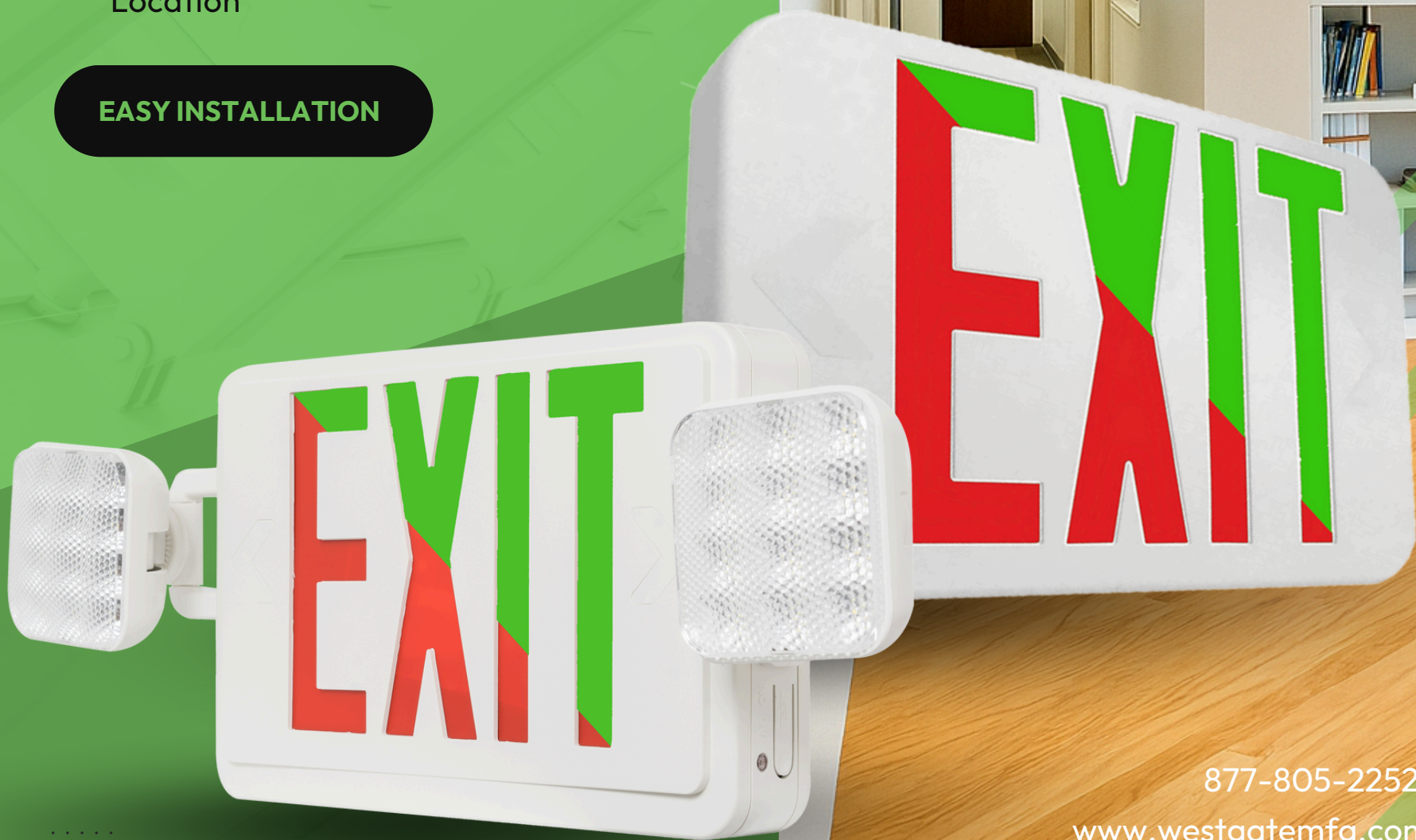


EXIT & EMERGENCY SIGNS

Key Features

- LED / Energy-Efficient Illumination
- Dual Voltage Operation
- Multiple Mounting Options
- Wet / Damp / Outdoor Location

EASY INSTALLATION



877-805-2252

www.westgatemfg.com

EXIT SIGNS



UNIVERSAL MOUNTING

Supports ceiling, wall, side, or pendant mounting. 1/2" knockouts provided on the side, back, and top.

XTSL Series Super Slim LED Exit Sign Lights

XTSL-GW

Dimensions: 12" (W) x 7 1/2" (H) x 1" (D)
Specifications: 1.1 W | 4.8LM | 120-277V/60Hz
 1001K
Available Colors:



XTSL-RW

Dimensions: 12" (W) x 7 1/2" (H) x 1" (D)
Specifications: 1.1 W | 4.8LM | 120-277V/60Hz
 1001K
Available Colors:



EXIT SIGNS



UNIVERSAL MOUNTING

Supports ceiling, wall, side, or pendant mounting. 1/2" knockouts provided on the side, back, and top.

XT Series LED Exit Sign Lights

XT-GW-EM

Dimensions: 12" (W) x 7 1/2" (H) x 1" (D)
Specifications: 3.8W | 4.8LM | 120-277V/60Hz
 1001K
Available Colors:



XT-RW-EM

Dimensions: 12" (W) x 7 1/2" (H) x 1" (D)
Specifications: 3.2W | 4.8LM | 120-277V/60Hz
 1001K
Available Colors:



EXIT SIGNS



UNIVERSAL MOUNTING

Supports ceiling, wall, side, or pendant mounting. 1/2" knockouts provided on the side, back, and top.

XTU Series 2-In-1 Color Selectable Universal Exit Signs

XTU-RG-EM-BK

Dimensions: 15 1/2" (W) x 12 1/2" (H) x 9" (D) 1W
Specifications: | 4.8LM | 120V/277V AC
1001K

Available Colors:

XTU-RG-2C-277V

Dimensions: 15 1/2" (W) x 12 1/2" (H) x 9" (D) 1W
Specifications: | 4.8LM | 277V AC
1001K

Available Colors:

XTU-RG-EM

Dimensions: 15 1/2" (W) x 12 1/2" (H) x 9" (D) 1W
Specifications: | 4.8LM | 120V/277V AC
1001K

Available Colors:

XTU-RG-BK-2C-120V

Dimensions: 15 1/2" (W) x 12 1/2" (H) x 9" (D) 1W
Specifications: | 4.8LM | 120V AC
1001K

Available Colors:

XTU-RG-2C-120V

Dimensions: 15 1/2" (W) x 12 1/2" (H) x 9" (D) 1W
Specifications: | 4.8LM | 120V AC
1001K

Available Colors:

XTU-RG-BK-2C-277V

Dimensions: 15 1/2" (W) x 12 1/2" (H) x 9" (D) 1W
Specifications: | 4.8LM | 277V AC
1001K

Available Colors:

EXIT SIGNS



ULTRA-SLIM PROFILE

Thin design with a depth of only 7/8", offering a sleek, high-end aesthetic that blends seamlessly into modern architectural environments.

XD-TH Series Thin Die-Cast LED Exit Sign

XD-TH-1GAAEM

Dimensions: 11 7/8" (W) x 9 3/8" (H) x 1 3/4" (D)
Specifications: 1W | 4.8LM | 120V AC | 1001K

Available Colors:  

XD-TH-1GBBEM

Dimensions: 11 7/8" (W) x 9 3/8" (H) x 1 3/4" (D)
Specifications: 1W | 4.8LM | 120V AC | 1001K

Available Colors:  

XD-TH-1GWWEM

Dimensions: 11 7/8" (W) x 9 3/8" (H) x 1 3/4" (D)
Specifications: 1W | 4.8LM | 120V AC | 1001K

Available Colors:  

XD-TH-1RAAEM

Dimensions: 11 7/8" (W) x 9 3/8" (H) x 1 3/4" (D)
Specifications: 1W | 4.8LM | 120V AC | 1001K

Available Colors:  

XD-TH-1RBBEM

Dimensions: 11 7/8" (W) x 9 3/8" (H) x 1 3/4" (D)
Specifications: 1W | 4.8LM | 120V AC | 1001K

Available Colors:  

XD-TH-1RWWEM

Dimensions: 11 7/8" (W) x 9 3/8" (H) x 1 3/4" (D)
Specifications: 1W | 4.8LM | 120V AC | 1001K

Available Colors:  

XD-TH-2GAAEM

Dimensions: 11 7/8" (W) x 9 3/8" (H) x 1 3/4" (D)
Specifications: 1W | 4.8LM | 120V AC | 1001K

Available Colors:  

XD-TH-2GBBEM

Dimensions: 11 7/8" (W) x 9 3/8" (H) x 1 3/4" (D)
Specifications: 1W | 4.8LM | 120V AC | 1001K

Available Colors:  

XD-TH-2GWWEM

Dimensions: 11 7/8" (W) x 9 3/8" (H) x 1 3/4" (D)
Specifications: 1W | 4.8LM | 120V AC | 1001K

Available Colors:  

XD-TH-2RAAEM

Dimensions: 11 7/8" (W) x 9 3/8" (H) x 1 3/4" (D)
Specifications: 1W | 4.8LM | 120V AC | 1001K

Available Colors:  

XD-TH-2RBBEM

Dimensions: 11 7/8" (W) x 9 3/8" (H) x 1 3/4" (D)
Specifications: 1W | 4.8LM | 120V AC | 1001K

Available Colors:  

XD-TH-2RWWEM

Dimensions: 11 7/8" (W) x 9 3/8" (H) x 1 3/4" (D)
Specifications: 1W | 4.8LM | 120V AC | 1001K

Available Colors:  

EXIT SIGNS



EDGE LIT DESIGN

Utilizes an ultra-clear, UV-stabilized acrylic panel to provide a high-end, "floating" light effect that enhances prestigious commercial interiors.

XT-EL Series Edgelit LED Exit Sign with Aluminum Housing

XT-ELIRCA-EM

Dimensions: 9 3/4"(H) x 12 1/6"(W) x 1 4/5"(D)
Specifications: 2.5W | 13LM | 120V-277V AC
1001K

Available Colors:  

XT-ELIGCA-EM

Dimensions: 9 3/4"(H) x 12 1/6"(W) x 1 4/5"(D)
Specifications: 2.5W | 13LM | 120V-277V AC
1001K

Available Colors:  

XT-ELIRCA-EM-WH

Dimensions: 9 3/4"(H) x 12 1/6"(W) x 1 4/5"(D)
Specifications: 2.5W | 13LM | 120V-277V AC
1001K

Available Colors:  

XT-ELIGCA-EM-WH

Dimensions: 9 3/4"(H) x 12 1/6"(W) x 1 4/5"(D)
Specifications: 2.5W | 13LM | 120V-277V AC
1001K

Available Colors:  

EXIT SIGNS



EDGEKIT DESIGN

Utilizes an ultra-clear, UV-stabilized acrylic panel to provide a high-end, "floating" light effect that enhances prestigious commercial interiors.

XE-EM Series Edgelit LED Exit Sign

XE-1RCA-EM

Dimensions: 13" (W) x 11.125" (H) x 1.75" (D)
Specifications: 4.5W | 13LM | 120V-277V AC
 1001K

Available Colors:  

XE-1RCW-EM

Dimensions: 13" (W) x 11.125" (H) x 1.75" (D)
Specifications: 4.5W | 13LM | 120V-277V AC
 1001K

Available Colors:  

XE-2RMW-EM

Dimensions: 13" (W) x 11.125" (H) x 1.75" (D)
Specifications: 4.5W | 13LM | 120V-277V AC
 1001K

Available Colors:  

XE-2RMA-EM

Dimensions: 13" (W) x 11.125" (H) x 1.75" (D)
Specifications: 4.5W | 13LM | 120V-277V AC
 1001K

Available Colors:  

XE-1GCA-EM

Dimensions: 13" (W) x 11.125" (H) x 1.75" (D)
Specifications: 4.8W | 13LM | 120V-277V AC
 1001K

Available Colors:  

XE-1GCW-EM

Dimensions: 13" (W) x 11.125" (H) x 1.75" (D)
Specifications: 4.8W | 13LM | 120V-277V AC
 1001K

Available Colors:  

XE-2GMW-EM

Dimensions: 13" (W) x 11.125" (H) x 1.75" (D)
Specifications: 4.8W | 13LM | 120V-277V AC
 1001K

Available Colors:  

XE-2GMA-EM

Dimensions: 13" (W) x 11.125" (H) x 1.75" (D)
Specifications: 4.8W | 13LM | 120V-277V AC
 1001K

Available Colors:  

EXIT SIGNS



IP65 RATED PROTECTION

Specifically engineered to be dust-tight and protected against water jets, making it ideal for parking garages, commercial kitchens, and outdoor corridors.

XT-WP Series Wet Location LED Exit Sign Universal Light

XT-WP-RG-EM

Dimensions: 12 3/5" (W) x 8" (H)
Specifications: 3.46W | 13LM | 120V/277V AC | 1001K

Available Colors:

XT-WP-GG-EM

Dimensions: 12 3/5" (W) x 8" (H)
Specifications: 3.46W | 13LM | 120V/277V AC | 1001K

Available Colors:

XT-WP-1RG-EM

Dimensions: 12 3/5" (W) x 8" (H)
Specifications: 3.46W | 13LM | 120V/277V AC | 1001K

Available Colors:

XT-WP-2RG-EM

Dimensions: 12 3/5" (W) x 8" (H)
Specifications: 3.46W | 13LM | 120V/277V AC | 1001K

Available Colors:

XT-WP-2GG-EM

Dimensions: 12 3/5" (W) x 8" (H)
Specifications: 3.46W | 13LM | 120V/277V AC | 1001K

Available Colors:

XT-WP-1RB-EM

Dimensions: 12 3/5" (W) x 8" (H)
Specifications: 3.46W | 13LM | 120V/277V AC | 1001K

Available Colors:

XT-WP-1GB-EM

Dimensions: 12 3/5" (W) x 8" (H)
Specifications: 3.46W | 13LM | 120V/277V AC | 1001K

Available Colors:

XT-WP-2RB-EM

Dimensions: 12 3/5" (W) x 8" (H)
Specifications: 3.46W | 13LM | 120V/277V AC | 1001K

Available Colors:

XT-WP-2GB-EM

Dimensions: 12 3/5" (W) x 8" (H)
Specifications: 3.46W | 13LM | 120V/277V AC | 1001K

Available Colors:



EXIT SIGNS



IP65 RATED PROTECTION

Specifically engineered to be dust-tight and protected against water jets, making it ideal for parking garages, commercial kitchens, and outdoor corridors.

XT-WP Series Wet Location LED Exit Sign Universal Light

XT-WP-RG-EM

Dimensions: 12 3/5" (W) x 8" (H)
Specifications: 3.46W | 13LM | 120V/277V AC | 1001K

Available Colors:  

XT-WP-GG-EM

Dimensions: 12 3/5" (W) x 8" (H)
Specifications: 3.46W | 13LM | 120V/277V AC | 1001K

Available Colors:  

XT-WP-1RG-EM

Dimensions: 12 3/5" (W) x 8" (H)
Specifications: 3.46W | 13LM | 120V/277V AC | 1001K

Available Colors:  

XT-WP-2RG-EM

Dimensions: 12 3/5" (W) x 8" (H)
Specifications: 3.46W | 13LM | 120V/277V AC | 1001K

Available Colors:  

XT-WP-2GG-EM

Dimensions: 12 3/5" (W) x 8" (H)
Specifications: 3.46W | 13LM | 120V/277V AC | 1001K

Available Colors:  

XT-WP-1RB-EM

Dimensions: 12 3/5" (W) x 8" (H)
Specifications: 3.46W | 13LM | 120V/277V AC | 1001K

Available Colors:  

XT-WP-1GB-EM

Dimensions: 12 3/5" (W) x 8" (H)
Specifications: 3.46W | 13LM | 120V/277V AC | 1001K

Available Colors:  

XT-WP-2RB-EM

Dimensions: 12 3/5" (W) x 8" (H)
Specifications: 3.46W | 13LM | 120V/277V AC | 1001K

Available Colors:  

XT-WP-2GB-EM

Dimensions: 12 3/5" (W) x 8" (H)
Specifications: 3.46W | 13LM | 120V/277V AC | 1001K

Available Colors:  

EXIT SIGNS



NEMA 4X & IP66

Provides extreme protection against corrosion and powerful hose-directed water, making it the industry standard for coastal, marine, and high-pressure wash-down environments.

XTN4X Series NEMA 4X LED Exit Sign Lights

XTN4X-1

Dimensions: 14 3/4" (W) x 10" (H) x 6" (D)
Specifications: 3.2-3.8W | Dual 120V/277V
Single Face/Double Face

Available Colors:

XTN4X-2

Dimensions: 14 3/4" (W) x 10" (H) x 6" (D)
Specifications: 3.2-3.8W | Dual 120V/277V
Single Face/Double Face

Available Colors:

XTN4X-1-EM

Dimensions: 14 3/4" (W) x 10" (H) x 6" (D)
Specifications: 3.2-3.8W | Dual 120V/277V
Single Face/Double Face

Available Colors:

XTN4X-2-EM

Dimensions: 14 3/4" (W) x 10" (H) x 6" (D)
Specifications: 3.2-3.8W | Dual 120V/277V
Single Face/Double Face

Available Colors:

EXIT SIGNS



ULTRA-THIN HYBRID PROFILE

Combines an illuminated exit sign with two powerful emergency heads in a streamlined, "super slim" housing designed to minimize visual clutter.

XTSL-CL Series Super Slim LED Exit Sign Lights with Adjustable LED Heads

XTSL-CL-RW

Dimensions: 12" (W) x 7 3/5" (H) x 1" (D)
Specifications: 1.2 per head | 120-277V / 60Hz
 Universal Single/Double

**Available
Colors:**



XTSL-CL-GW

Dimensions: 12" (W) x 7 3/5" (H) x 1" (D)
Specifications: 1.2 per head | 120-277V / 60Hz
 Universal Single/Double

**Available
Colors:**



EXIT & EMERGENCY COMBO



INTEGRATED DUAL EMERGENCY

Merges a high-visibility exit sign with two fully adjustable, glare-free LED lamp heads to provide comprehensive egress illumination in a single fixture.

XT-CL-EM Series Combination LED Exit Sign & LED Emergency

XT-CL-RW-EM

Dimensions: 12" (W) x 7 3/5" (H) x 1" (D)
Specifications: 1.2 per head | 120-277V / 60Hz
Universal Single/Double

Available Colors:



XT-CL-GW-EM

Dimensions: 12" (W) x 7 3/5" (H) x 1" (D)
Specifications: 1.2 per head | 120-277V / 60Hz
Universal Single/Double

Available Colors:



EXIT & EMERGENCY COMBO



FIELD-SWITCHABLE LED COLORS

Features an internal toggle switch that allows you to instantly change the exit legend between Red and Green to meet any local code.

XTU-CL-RG Series 2-IN-1 Color Select Universal Combo Exit Lights

XTU-CL-RG-EM-BK

Dimensions: 23 9/10" (W) x 10 1/4" (H) x 4 1/5" (D)
Specifications: 3.2W(Red) & 3.8W(Green) | Dual 120V/277V Double Face

Available Colors:   

XTU-CL-RG-EM

Dimensions: 23 9/10" (W) x 10 1/4" (H) x 4 1/5" (D)
Specifications: 3.2W(Red) & 3.8W(Green) | Dual 120V/277V Double Face

Available Colors:   

XTU-CL-RG-EM-RC

Dimensions: 23 9/10" (W) x 10 1/4" (H) x 4 1/5" (D)
Specifications: 3.2W(Red) & 3.8W(Green) | Dual 120V/277V Double Face | Remote Capable

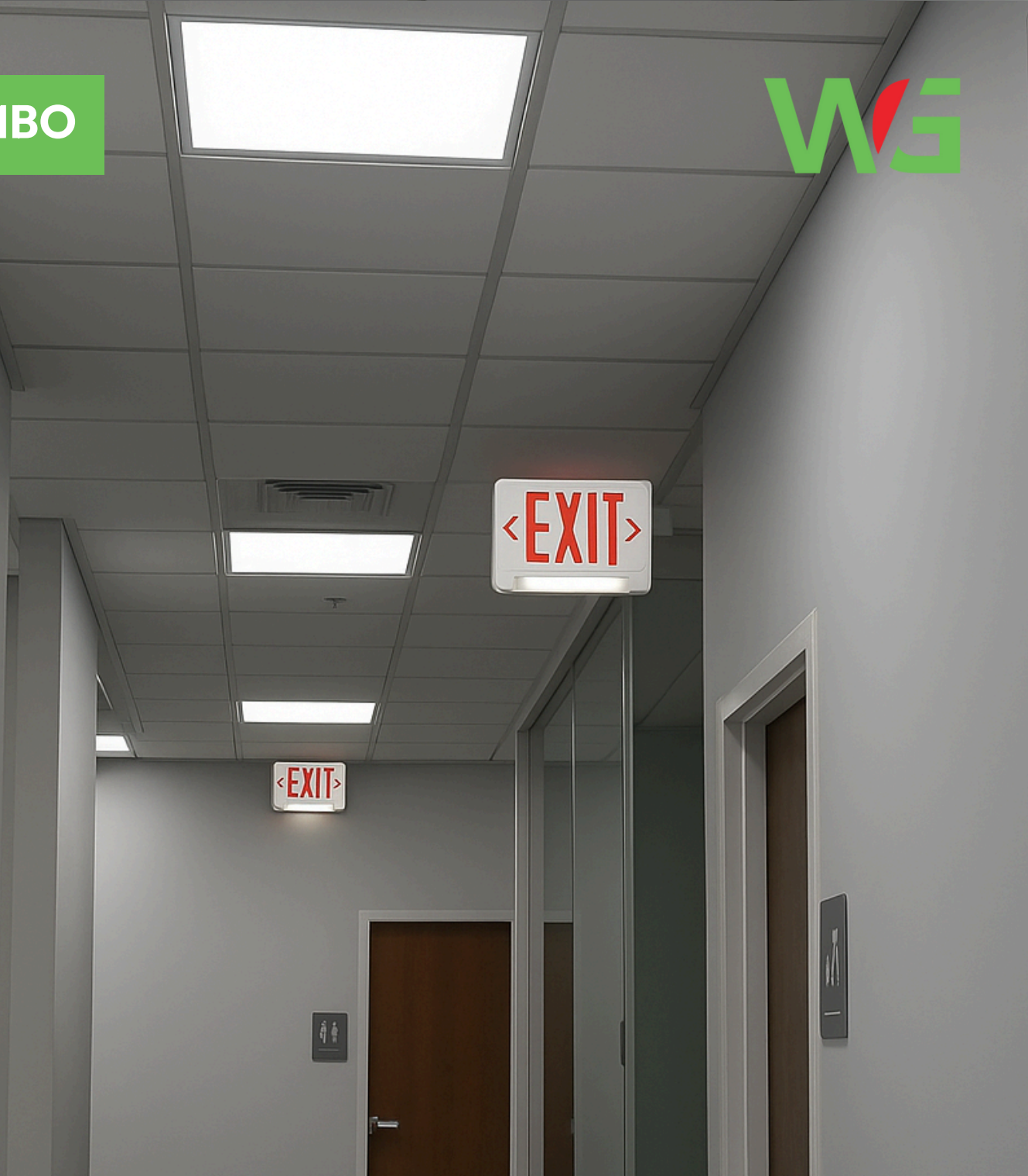
Available Colors:   

XTU-CL-RG-EM-RC-BK

Dimensions: 23 9/10" (W) x 10 1/4" (H) x 4 1/5" (D) | 3.2-3.8W(Red) & 3.8W(Green) | Dual 120V/277V Double Face | Remote Capable

Available Colors:   

EXIT & EMERGENCY COMBO



LINEAR "LIGHT BAR" EGRESS

Features an integrated LED emergency strip that provides a uniform 222-lumen output, replacing traditional dual-heads with a sleek, linear light bar.

XIT-STRIP Series LED Strip Combination Exit/Emergency Lights

XIT-STRIP-2R-W

Dimensions: 12.6" (W) x 8.6" (H) x 1.9" (D)
Specifications: 3W | 120-277V / 60Hz
Double Face

Available Colors:   

XIT-STRIP-2G-W

Dimensions: 12.6" (W) x 8.6" (H) x 1.9" (D)
Specifications: 3W | 120-277V / 60Hz
Double Face

Available Colors:   

XIT-STRIP-2R-B

Dimensions: 12.6" (W) x 8.6" (H) x 1.9" (D)
Specifications: 3W | 120-277V / 60Hz
Double Face

Available Colors:   

XIT-STRIP-2G-B

Dimensions: 12.6" (W) x 8.6" (H) x 1.9" (D)
Specifications: 3W | 120-277V / 60Hz
Double Face

Available Colors:   



PREMIUM DIE-CAST ALUMINUM

Constructed from rigid, high-grade die-cast aluminum for a sophisticated architectural finish that resists warping and wear in high-end environments.

XT-C-ADJ Series Combo Aluminum Adjustable Heads LED Exit Sign

XT-C-ADJ-3RBBEM

Dimensions: 12 1/2" (W) x 11 3/4" (H) x 2 3/8" (D)
Specifications: 6W | 120V/277V AC
1001K

Available Colors:  

XT-C-ADJ-3GAAEM

Dimensions: 12 1/2" (W) x 11 3/4" (H) x 2 3/8" (D)
Specifications: 6W | 120V/277V AC
1001K

Available Colors:  

XT-C-ADJ-3RAAEM

Dimensions: 12 1/2" (W) x 11 3/4" (H) x 2 3/8" (D)
Specifications: 6W | 120V/277V AC
1001K

Available Colors:  

XT-C-ADJ-3GWWEM

Dimensions: 12 1/2" (W) x 11 3/4" (H) x 2 3/8" (D)
Specifications: 6W | 120V/277V AC
1001K

Available Colors:  

XT-C-ADJ-3RWWEM

Dimensions: 12 1/2" (W) x 11 3/4" (H) x 2 3/8" (D)
Specifications: 6W | 120V/277V AC
1001K

Available Colors:  

XT-C-ADJ-RC

Dimensions: Optional Remote
Specifications: Capability

XT-C-ADJ-3GBBEM

Dimensions: 12 1/2" (W) x 11 3/4" (H) x 2 3/8" (D)
Specifications: 6W | 120V/277V AC
1001K

Available Colors:  

EXIT & EMERGENCY COMBO



WET LOCATION

Engineered for wet location use, making them ideal for environments exposed to moisture and precipitation

CWLEZXTE Series Combination LED Exit Sign & LED Emergency

CWLEZXTE1GW

Dimensions: 12 3/4" (W) x 13 1/8" (H) x 4 1/8" (D)
Specifications: 3.6W | 120V AC | 1001K

Available Colors:  

CWLEZXTE1GG

Dimensions: 12 3/4" (W) x 13 1/8" (H) x 4 1/8" (D)
Specifications: 1W | 4.8LM | 120V AC | 1001K

Available Colors:  

CWLEZXTE1RW

Dimensions: 12 3/4" (W) x 13 1/8" (H) x 4 1/8" (D)
Specifications: 1W | 4.8LM | 120V AC | 1001K

Available Colors:  

CWLEZXTE1RG

Dimensions: 12 3/4" (W) x 13 1/8" (H) x 4 1/8" (D)
Specifications: 1W | 4.8LM | 120V AC | 1001K

Available Colors:  

CWLEZXTE1GB

Dimensions: 12 3/4" (W) x 13 1/8" (H) x 4 1/8" (D)
Specifications: 1W | 4.8LM | 120V AC | 1001K

Available Colors:  

CWLEZXTE1RB

Dimensions: 12 3/4" (W) x 13 1/8" (H) x 4 1/8" (D)
Specifications: 1W | 4.8LM | 120V AC | 1001K

Available Colors:  

CWLEZXTE2GB

Dimensions: 12 3/4" (W) x 13 1/8" (H) x 4 1/8" (D)
Specifications: 1W | 4.8LM | 120V AC | 1001K

Available Colors:  

CWLEZXTE2RB

Dimensions: 12 3/4" (W) x 13 1/8" (H) x 4 1/8" (D)
Specifications: 1W | 4.8LM | 120V AC | 1001K

Available Colors:  

CWLEZXTE2GW

Dimensions: 12 3/4" (W) x 13 1/8" (H) x 4 1/8" (D)
Specifications: 1W | 4.8LM | 120V AC | 1001K

Available Colors:  

CWLEZXTE2GG

Dimensions: 12 3/4" (W) x 13 1/8" (H) x 4 1/8" (D)
Specifications: 1W | 4.8LM | 120V AC | 1001K

Available Colors:  

CWLEZXTE2RW

Dimensions: 12 3/4" (W) x 13 1/8" (H) x 4 1/8" (D)
Specifications: 1W | 4.8LM | 120V AC | 1001K

Available Colors:  

CWLEZXTE2RG

Dimensions: 12 3/4" (W) x 13 1/8" (H) x 4 1/8" (D)
Specifications: 1W | 4.8LM | 120V AC | 1001K

Available Colors:  

EXIT & EMERGENCY COMBO



NSF SANITATION CERTIFIED

Meets rigorous sanitation standards for use in food processing plants and commercial kitchens where hygiene and frequent cleaning are mandatory.

XTCLN4X Series NEMA 4X Combination LED Exit Sign & LED Emergency

XTCLN4X

Dimensions: 12" (W) x 7 3/5" (H) x 1" (D)
Specifications: 12W/15W/28W | 120V/277V
Universal Single/Double

**Available
Colors:**



EXIT & EMERGENCY COMBO



TACTICAL LOW LEVEL PLACEMENT

Specifically engineered for mounting near the floor to provide a clear, visible exit path below rising smoke and heat during a fire.

LLXT Series Low Level LED Exit & Emergency Combo

LLXT-RW

Dimensions: 14 5/8" (W) x 10 1/8" (H) x 1" (D)
Specifications: 3.1W | Dual Circuit with 277V
Single Faceplates

Available Colors:   

XIT-STRIP-2G-W

Dimensions: 14 5/8" (W) x 10 1/8" (H) x 1" (D)
Specifications: 3W | 120-277V / 60Hz
Double Face

Available Colors:   

XIT-STRIP-2R-B

Dimensions: 14 5/8" (W) x 10 1/8" (H) x 1" (D)
Specifications: 3W | 120-277V / 60Hz
Double Face

Available Colors:   

XIT-STRIP-2G-B

Dimensions: 14 5/8" (W) x 10 1/8" (H) x 1" (D)
Specifications: 3W | 120-277V / 60Hz
Double Face

Available Colors:   

EXIT & EMERGENCY COMBO



ALL-WEATHER IP65 PROTECTION

Specifically engineered for wet locations with an IP65 rating, making it the ideal solution for parking garages, outdoor walkways, and moisture prone industrial facilities.

XT-CLWP-EM Series Universal Combo LED Exit & Emergency Sign

XT-CLWP-RG-EM

Dimensions: 11 8/9" (W) x 13 1/3" (H)
Specifications: 2.4W Per head | 3.46W | 120V/277V AC
Single or double face (Universal)

Available Colors:  

XT-CLWP-GG-EM

Dimensions: 11 8/9" (W) x 13 1/3" (H)
Specifications: 2.4W Per head | 3.46W | 120V/277V AC
Single or double face (Universal)

Available Colors:  

EXIT & EMERGENCY COMBO



IP65 WEATHERPROOF SEALED

Engineered with an IP65 rating to provide a dust-tight, water resistant seal that ensures survival in outdoor and hose-down environments.

XT-CWP Series Combination LED Exit & Incandescent Emergency Sign

XT-CWP-RG-EM

Dimensions: 11 3/4" (W) x 18 1/4" (H)
Specifications: 3.2W (Red)
5.4W | 120V/277V AC
Universal Single Faceplate

**Available
Colors:**



XT-CWP-GG-EM

Dimensions: 11 3/4" (W) x 18 1/4" (H)
Specifications: 3.8W (Green)
5.4W | 120V/277V AC
Universal Single Faceplate

**Available
Colors:**



EMERGENCY LIGHTS



HIGH-PRECISION BEAM CONTROL

Engineered with improved beam optics that allow for increased fixture spacing while delivering a total of 200 lumens of ultra-bright 6000K light.

EL-MT Series Modern Mini Bug-Eye Emergency Lights

EL-MT

Dimensions:
Specifications:

Available Colors:

7" (W) x 7" (H)
1.5W (2)
120V/277V AC
Universal Single Faceplate



EL-MT-HO

Dimensions:
Specifications:

Available Colors:

7" (W) x 7" (H)
1.5W (2)
120V/277V AC
Universal Single Faceplate



EMERGENCY LIGHTS



HIGH-PRECISION BEAM CONTROL

Engineered with improved beam optics that allow for increased fixture spacing while delivering a total of 200 lumens of ultra-bright 6000K light.

EL-M5 Series Modern Mini Emergency Lights

EL-M5

Dimensions:
Specifications:

**Available
Colors:**

7" (W) x 14" (H)
1.5W (2)
120V/277V AC
Universal Single Faceplate



EL-M5-BK

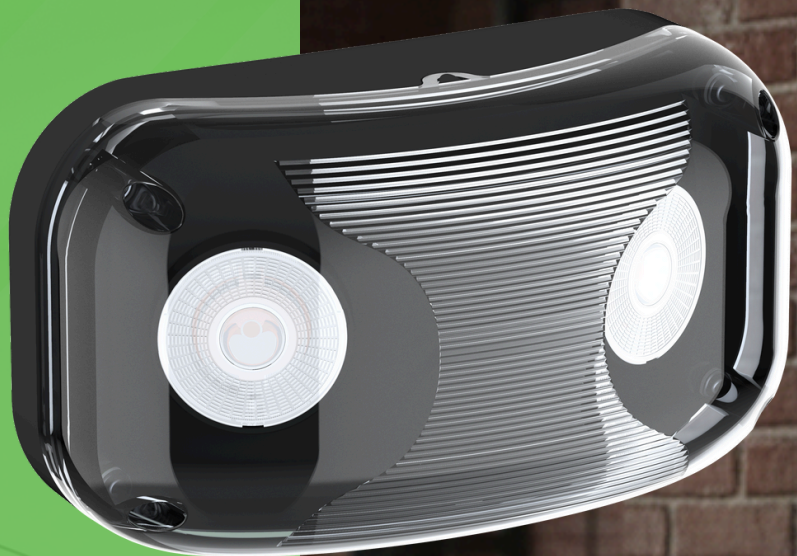
Dimensions:
Specifications:

**Available
Colors:**

7" (W) x 14" (H)
1.5W (2)
120V/277V AC
Universal Single Faceplate



EMERGENCY LIGHTS



ALL-WEATHER IP65 RESILIENCE

Engineered with an IP65 rating and a seamless silicone gasket to provide total protection against dust and water in challenging wet locations.

EL-M5 Series Modern Mini Emergency Lights

EL-M5

Dimensions:

Specifications:

**Available
Colors:**

7" (W) x 14" (H)
1.5W (2)
120V/277V AC
Universal Single Faceplate



EL-M5-BK

Dimensions:

Specifications:

**Available
Colors:**

7" (W) x 14" (H)
1.5W (2)
120V/277V AC
Universal Single Faceplate



EMERGENCY LIGHTS



PRECISION "MINI OVAL" FOOTPRINT

Features an ultra-compact and aesthetic oval design (approx. 9" x 4.5") that provides critical safety lighting while blending into modern architectural interiors.

EL-M2 Series Oval Modern Mini Emergency Lights

EL-M2

Dimensions:

4"(H) x 8 1/2"(W) x 1 3/4"(D)

Specifications:

1W (2)
120V/277V AC
Universal Single Faceplate

**Available
Colors:**



EL-M2-BK

Dimensions:

4"(H) x 8 1/2"(W) x 1 3/4"(D)

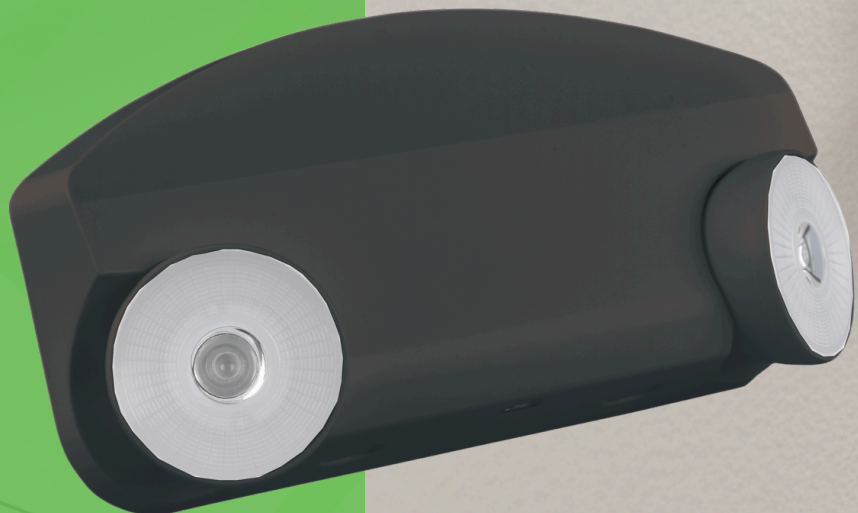
Specifications:

1W (2)
120V/277V AC
Universal Single Faceplate

**Available
Colors:**



EMERGENCY LIGHTS



ULTRA-COMPACT 4" X 9" PROFILE

Features a minimalist footprint of just 4.3" x 9.3", providing powerful 254-lumen safety lighting without the bulky presence of traditional emergency units.

EL-M1 Series Mini Emergency Lights

EL-M1

Dimensions:

4-1/4"(H) x 9-1/4"(W) x 1-3/5"(D)

Specifications:

1W (2)

120V/277V AC

Universal Single Faceplate

Available

Colors:



EL-M1-BK

Dimensions:

4-1/4"(H) x 9-1/4"(W) x 1-3/5"(D)

Specifications:

1W (2)

120V/277V AC

Universal Single Faceplate

Available

Colors:



EMERGENCY LIGHTS



LED EMERGENCY LIGHTS
60° x 60°
57 W CU V1383

GLARE-FREE ADJUSTABLE HEADS

Equipped with two fully adjustable, 1W LED lamp heads featuring chrome-plated metallized reflectors for optimal light distribution without harsh glare.

EL-1 Series LED Emergency Light

EL-1

Dimensions:

13.7" (W) x 4.3" (H) x 3.5" (D)

Specifications:

1W (2)

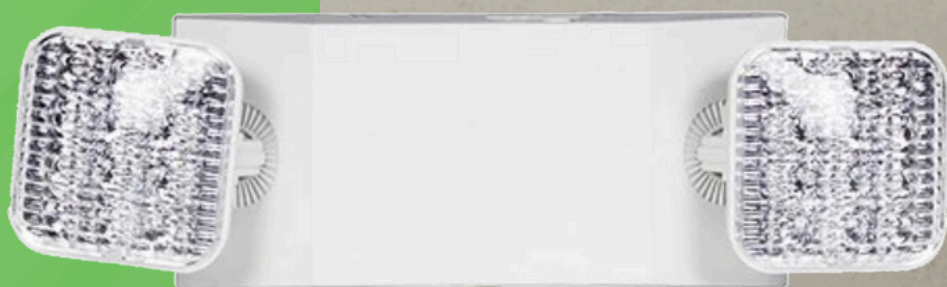
120V/277V AC

Universal Single Faceplate

Available Colors:



EMERGENCY LIGHTS



HIGHER-OUTPUT 1.2W HEADS

Equipped with two 1.2W high-intensity LED lamp heads, providing a significant boost in brightness compared to standard 1W emergency units.

EL-1L Series LED Emergency Lights with Higher Output

EL-1

Dimensions:
Specifications:

15.5" W X 5" H X 4.75" D
1.2W (2)
Dual 120-277V
Mount: Wall and Ceiling

**Available
Colors:**



EL-1L-BK

Dimensions:
Specifications:

15.5" W X 5" H X 4.75" D
1.2W (2)
Dual 120-277V
Mount: Wall and Ceiling

**Available
Colors:**



EL-1L-RC

Dimensions:
Specifications:

13.7" (W) x 4.3" (H) x 3.5" (D)
1W (2)
Remote Control Capable | Dual 120-277V
Mount: Wall and Ceiling

**Available
Colors:**





REMOTE-CAPABLE ENGINEERING

Designed with additional battery capacity to power up to 2.2W of extra remote emergency heads for expanded coverage.

EL-1 D Series LED 2-Head Designer Emergency Light

EL-1

Dimensions:

13.7" (W) x 4.3" (H) x 3.5" (D)

Specifications:

1.2W (2)

Dual 120-277V

Mount: Wall and Ceiling

**Available
Colors:**



EL-1L-RC

Dimensions:

13.7" (W) x 4.3" (H) x 3.5" (D)

Specifications:

1W (2)

Remote Control Capable | Dual 120-277V

Mount: Wall and Ceiling

**Available
Colors:**





ENHANCED BEAM OPTICS

Features improved beam control technology designed to provide superior light distribution, allowing for increased spacing between units and uniform illumination.

EL-2A Series Builder Series LED Emergency Lights

EL-2A

Dimensions:

4 5/8"(H) x 9 1/2"(W) x 2 1/4"(D)

Specifications:

1.2W (2)

Dual 120-277V

Mount: Wall and Ceiling

Available

Colors:





PRECISION BEAM CONTROL

Engineered with improved optical lenses that maximize light distribution, allowing for significantly increased spacing between fixtures while maintaining code-compliant illumination.

EL-HO Series LED 2-Head High Output Emergency Light

EL-HO

Dimensions:
Specifications:

12-1/2"(W) x 2-4/5"(D)
3W (2)
Dual 120-277V
Mount: Wall and Ceiling

**Available
Colors:**



EL-EHO

Dimensions:
Specifications:

5"(H) x 12-1/2"(W) x 2-4/5"(D)
10W (2)
Dual 120-277V
Extra High-Output | Mount: Wall and Ceiling

**Available
Colors:**



EMERGENCY LIGHTS



**ALL-WEATHER
IP65 RATING**

Engineered with a professional IP65 rating to provide a dust-tight, water-resistant seal that ensures survival in outdoor and hose-down environments

EL-WP Series LED 2-Head Emergency Light

EL-WP

Dimensions:

4-1/5"(H) x 12-1/4"(W) x 5-1/4"(D)

Specifications:

6W (2)

Dual 120-277V

Mount: Wall and Ceiling

Available

Colors:



EMERGENCY LIGHTS



ALL-WEATHER WET LOCATION RATED

Engineered with a robust, weather-resistant thermoplastic housing and seamless silicone gaskets to perform reliably in outdoor and moisture-prone environments.

LEDTFX Series LED Emergency Lights Round Heads

LEDTFX-2

Dimensions:

6"(H) x 12-1/2"(W) x 8-1/2"(D)

Specifications:

1.875W (2)

Dual 120-277V

Mount: Wall and Ceiling

Available

Colors:



LEDTFX-2-B

Dimensions:

6"(H) x 12-1/2"(W) x 8-1/2"(D)

Specifications:

1.875W (2)

Dual 120-277V

Mount: Wall and Ceiling

Available

Colors:



EMERGENCY LIGHTS



MULTI-WATTAGE SELECTABILITY

Features an internal Multi-Power switch allowing you to field-select between 15W, 20W, or 30W for custom brightness levels.

LESW-EM Series Outdoor Emergency Wall Pack with Photocell Selectable

LESW-15-30W-MCTP-P-EM

Dimensions:

8 1/2"(L) x 5 3/4"(W) x 3"(D)

Specifications:

15W/20W/30W
120-277V AC 60Hz
Wall Mount

Available Colors:



LESW-15-30W-MCTP-P-WH-EM

Dimensions:

8 1/2"(L) x 5 3/4"(W) x 3"(D)

Specifications:

15W/20W/30W
120-277V AC 60Hz
Wall Mount

Available Colors:



EMERGENCY LIGHTS



SWITCHABLE MULTI CCT TECHNOLOGY

Features an internal switch allowing you to field-select between 3500K, 4000K, or 5000K to match the existing lighting of your facility.

DELW Series Decorative Outdoor LED AC/Emergency Unit

DELW-15W-MCT-BK

Dimensions: 3-5/8"(H) x 10-1/2"(W) x 6-3/5"(D)
Specifications: 15W
120-277V AC 60Hz
Wall Mount

Available Colors:



DELW-15W-MCT-BR

Dimensions: 3-5/8"(H) x 10-1/2"(W) x 6-3/5"(D)
Specifications: 15W
120-277V AC 60Hz
Wall Mount

Available Colors:



DELW-15W-MCT-WH

Dimensions: 3-5/8"(H) x 10-1/2"(W) x 6-3/5"(D)
Specifications: 15W
120-277V AC 60Hz
Wall Mount

Available Colors:



EMERGENCY LIGHTS



INTEGRATED PHOTOCELL CONTROL

Includes a factory-installed photocell for automatic dusk-to-dawn operation, allowing the unit to function as standard security lighting until power is lost.

DBEL-ACEM Series Decorative Outdoor LED AC/Emergency Unit

DBEL-ACEM-WH-SDT

Dimensions: 3-5/8"(H) x 10-1/2"(W) x 6-3/5"(D)
Specifications: 12W | 120-277V
Wall Mount

Available Colors:

DBEL-ACEM-WH-SDT-CW

Dimensions: 3-5/8"(H) x 10-1/2"(W) x 6-3/5"(D)
Specifications: 12W | 120-277V
Wall Mount

Available Colors:

DBEL-ACEM-BK-SDT

Dimensions: 3-5/8"(H) x 10-1/2"(W) x 6-3/5"(D)
Specifications: 12W | 120-277V
Wall Mount

Available Colors:

DBEL-ACEM-BK-SDT-CW

Dimensions: 3-5/8"(H) x 10-1/2"(W) x 6-3/5"(D)
Specifications: 12W | 120-277V
Wall Mount

Available Colors:

DBEL-ACEM-BR-SDT

Dimensions: 3-5/8"(H) x 10-1/2"(W) x 6-3/5"(D)
Specifications: 12W | 120-277V
Wall Mount

Available Colors:

DBEL-ACEM-BR-SDT-CW

Dimensions: 3-5/8"(H) x 10-1/2"(W) x 6-3/5"(D)
Specifications: 12W | 120-277V
Wall Mount

Available Colors:

DBEL-ACEM-N-SDT

Dimensions: 3-5/8"(H) x 10-1/2"(W) x 6-3/5"(D)
Specifications: 12W | 120-277V
Wall Mount

Available Colors:

DBEL-ACEM-N-SDT-CW

Dimensions: 3-5/8"(H) x 10-1/2"(W) x 6-3/5"(D)
Specifications: 12W | 120-277V
Wall Mount

Available Colors:

EMERGENCY REMOTE HEADS



PRECISION-ADJUSTABLE SINGLE/DOUBLE HEADS

Features fully adjustable 1W LED lamp heads that allow for exact targeting of light to eliminate dark spots in hallways or stairwells.

EL-RH Series Indoor Square LED Remote Heads

EL-RH1

Dimensions: 6-3/8"(H) x 4-1/4"(W) x 4-1/4"(D)
Specifications: 1W
3.6V/6V/9.9V/12 DC
Single Head

**Available
Colors:**



EL-RH2

Dimensions: 6-3/4"(H) x 4-1/4"(W) x 10-3/8"(D)
Specifications: 1W (2)
3.6V/6V/9.9V/12 DC
Double Head

**Available
Colors:**



EMERGENCY REMOTE HEADS



ALL-WEATHER IP65 RESILIENCE

Engineered with a professional IP65 rating to provide a dust-tight, water-resistant seal that ensures survival in outdoor and hose-down environments.

EL-RH-WP Series Outdoor Square LED Remote Heads

EL-RH1-WP

Dimensions:

6-3/8"(H) x 4-1/4"(W) x 4-1/4"(D)

Specifications:

1W
3.6V/6V/9.9V/12 DC
Single Head

**Available
Colors:**



EL-RH2-WP

Dimensions:

6-3/4"(H) x 4-1/4"(W) x 10-3/8"(D)

Specifications:

1W (2)
3.6V/6V/9.9V/12 DC
Double Heads

**Available
Colors:**



EMERGENCY REMOTE HEADS



NEMA 4X & IP66 PROTECTION

Engineered to withstand the most punishing environments, providing a dust-tight and water tight seal against hose-down pressure and corrosion.

RHN4X Series NEMA 4x Outdoor LED Remote Heads

RHN4X-1W

Dimensions: 4-7/8"(H) x 9-5/8"(W) x 5-1/2"(D)
Specifications: 3.3W | 120-277V
Wal Mount

Available Colors:



RHN4X-1B

Dimensions: 4-7/8"(H) x 9-5/8"(W) x 5-1/2"(D)
Specifications: 3.3W | 120-277V
Wal Mount

Available Colors:



RHN4X-2W

Dimensions: 4-7/8"(H) x 9-5/8"(W) x 5-1/2"(D)
Specifications: 3.3W | 120-277V
Wal Mount

Available Colors:



RHN4X-2B

Dimensions: 4-7/8"(H) x 9-5/8"(W) x 5-1/2"(D)
Specifications: 3.3W | 120-277V
Wal Mount

Available Colors:



EMERGENCY REMOTE HEADS



NEMA 4X & NSF RATED ARMOR

Engineered for the most demanding environments, providing a dust-tight and water-tight seal that is certified for food processing areas and hose-down locations.

ELN4X Series NEMA 4x LED Emergency Lights

ELN4X-12-15W-B

Dimensions: 4-7/8"(H) x 9-5/8"(W) x 5-1/2"(D)
Specifications: 15W | 120-277V
Wall Mount

Available Colors: ●

ELN4X-12-15W-W

Dimensions: 4-7/8"(H) x 9-5/8"(W) x 5-1/2"(D)
Specifications: 15W | 120-277V
Wall Mount

Available Colors: ●

ELN4X-12-36W-B

Dimensions: 4-7/8"(H) x 9-5/8"(W) x 5-1/2"(D)
Specifications: 36W | 120-277V
Wall Mount

Available Colors: ●

ELN4X-12-36W-W

Dimensions: 4-7/8"(H) x 9-5/8"(W) x 5-1/2"(D)
Specifications: 36W | 120-277V
Wall Mount

Available Colors: ●

ELN4X-12-54W-B

Dimensions: 4-7/8"(H) x 9-5/8"(W) x 5-1/2"(D)
Specifications: 54W | 120-277V
Wall Mount

Available Colors: ●

ELN4X-12-54W-W

Dimensions: 4-7/8"(H) x 9-5/8"(W) x 5-1/2"(D)
Specifications: 12W | 120-277V
Wall Mount

Available Colors: ●

ELN4X-6-15W-B

Dimensions: 4-7/8"(H) x 9-5/8"(W) x 5-1/2"(D)
Specifications: 15W | 120-277V
Wall Mount

Available Colors: ●

ELN4X-6-15W-W

Dimensions: 4-7/8"(H) x 9-5/8"(W) x 5-1/2"(D)
Specifications: 15W | 120-277V
Wall Mount

Available Colors: ●

ELN4X-6-36W-B

Dimensions: 4-7/8"(H) x 9-5/8"(W) x 5-1/2"(D)
Specifications: 36W | 120-277V
Wall Mount

Available Colors: ●

ELN4X-6-36W-W

Dimensions: 4-7/8"(H) x 9-5/8"(W) x 5-1/2"(D)
Specifications: 36W | 120-277V
Wall Mount

Available Colors: ●

ELN4X-6-54W-B

Dimensions: 4-7/8"(H) x 9-5/8"(W) x 5-1/2"(D)
Specifications: 54W | 120-277V
Wall Mount

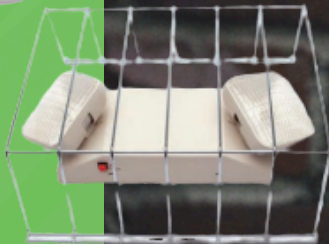
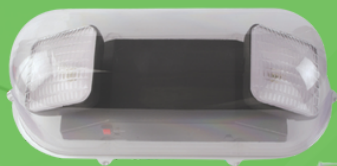
Available Colors: ●

ELN4X-6-54W-W

Dimensions: 4-7/8"(H) x 9-5/8"(W) x 5-1/2"(D)
Specifications: 54W | 120-277V
Wall Mount

Available Colors: ●

VANDAL SHIELD GUARDS



HIGH-IMPACT POLYCARBONATE

Crafted from high-grade, breakage-resistant polycarbonate that withstands physical shocks and intense impact.

Polycarbonate Vandal Environmental Shield Guards

PCS-1

Specifications: For use with most standard Exit signs

BG-1

Specifications: For use with most standard Exit signs

BGR-1

Specifications: For use with most standard Emergency lights

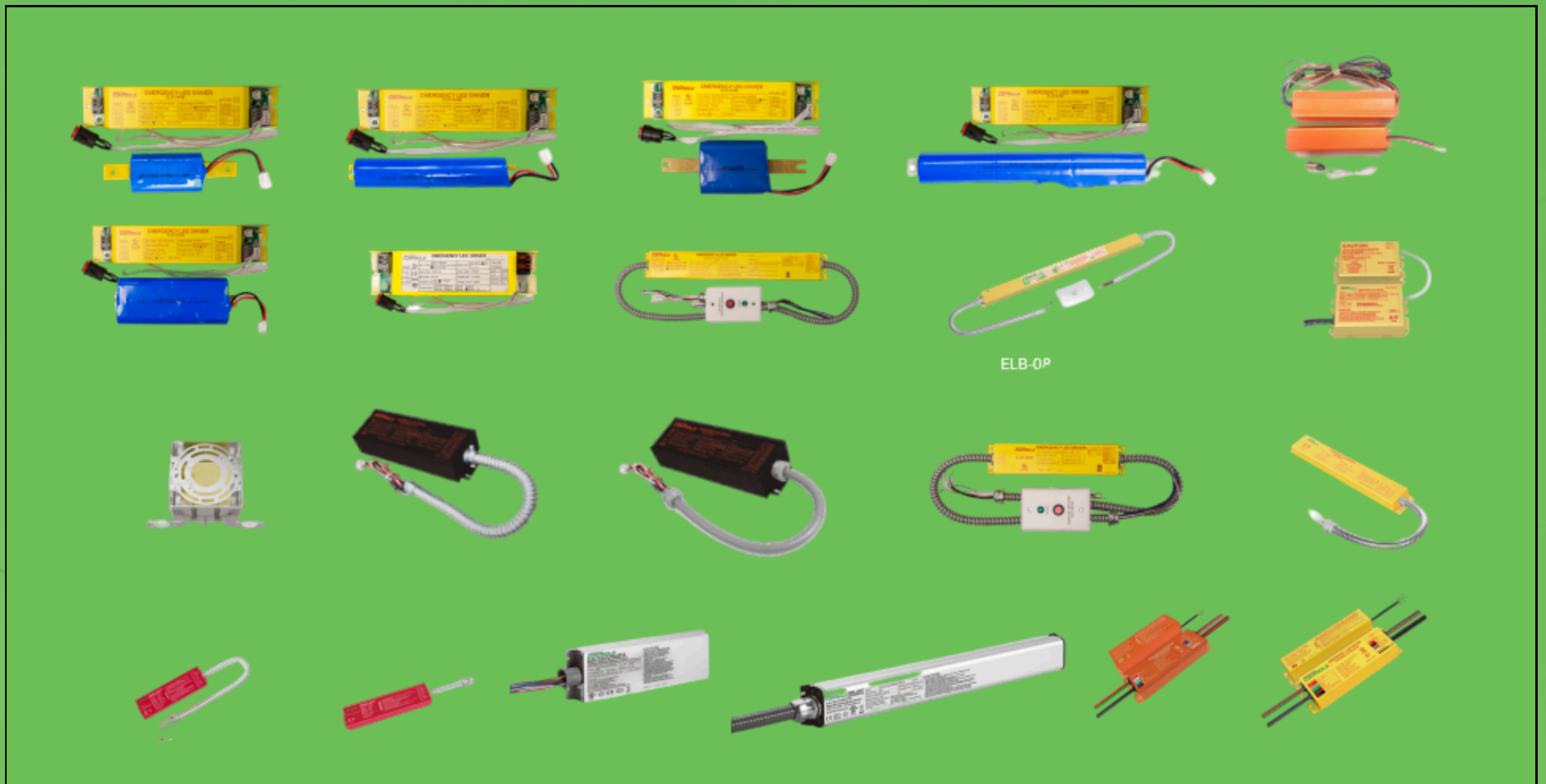
WG-1

Specifications: Wire Guard
13-3/4 X 15-1/4 X 6"

WG-3

Specifications: Wire Guard
13-3/4 X 30-1/4 X 6"

EMERGENCY BATTERY BACKUPS



ELB-0P

WIDE-VOLTAGE COMPATIBILITY

Engineered with universal input voltage (100-277V or 100-347V) to integrate seamlessly with standard electrical systems in any facility.



Emergency Battery Backups

ELB-0848

8W | Li-ion
2500mAh

ELB-1048-HH

10W | LifePO4
3000mAh

ELB-1248

12W | Li-ion
2500mAh

ELB-1548-HH

15W | LifePO4
3000mAh

ELB-2048

20W | Li-ion
2500mAh

ELB-0460-FM

20W | Li-ion
4000mAh

ELB-2048-EXTR

20W | Ni-MH
4000mAh

ELB-3048-FLEX

30W | Ni-MH
4000mAh

ELB-0895

8W | Ni-MH
2600mAh

ELB-30150-FLEX

30W | Li-ion
4000mAh

ELB-2048-IP65

20W | Li-ion
4000mAh

ELB-20150-IP65

20W | Li-ion
4000mAh

ELB-20150

20W | Li-ion
4000mAh

ELB-08170-EXTR

8W | Li-ion
4000mAh

ELB-08120-AC

8W | Li-ion

ELB-09120-AC

9W | Li-ion

ELB-09120-AC-JB

9W | 4in Square J-Box with Flat Bracket for Ceiling Lights

ELB-12120-AC

12W | Li-ion

ELB-15120-AC

15W | Li-ion

ELB-20175-AC-FLEX

20W | Li-ion
4000mAh

ELB-40170-AC-FLEX

40W | Direct AC Connect

ELB-60170-AC-FLEX

60W | Direct AC Connect

ELB-18150-B

18W | Li-ion

ELB-CW-18W-MW

18W | Cold-Weather LED Emergency Backup | Multi-Voltage Internal

ELB-CW-27W-MW

27W | Cold-Weather LED Emergency Backup | Multi-Voltage Internal

ELB-CW-27W-MW-IP66

27W | Cold-Weather LED Emergency Backup Multi-Voltage Internal

ELB-15300-HH-B

15W | Constant-Power Internal Backup | 100-347V Input Self-Test

ELB-23120-HH-AC-FLEX

23W Backup for T8 Lamps and DOB Downlights

ELB-0856-CP-SD-HH-B

8W | LiFePO4 Constant Power Self-Diag. | 2PC Boxed EM

ELB-1556-CP-SD-HH-B

15W | LiFePO4 Constant Power Self-Diag. | 2PC Boxed EM

ELB-2056-CP-SD-HH-B

20W | LiFePO4 Constant Power Self-Diag. | 2PC Boxed EM