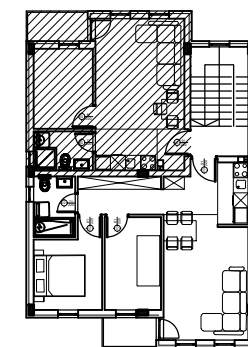
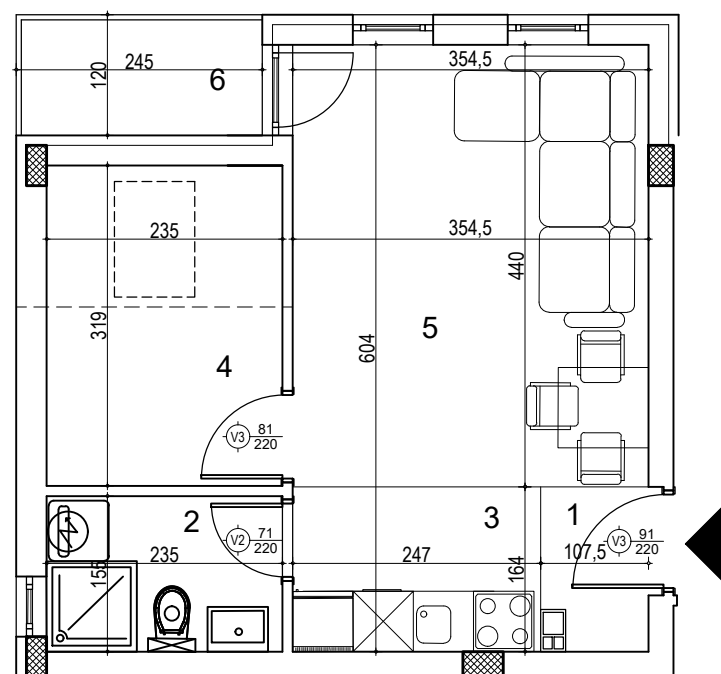




STEVANA BAJE GARDINOVAČKOG



stan - S4

POTKROVLJE

S4					
BR.	NAZIV PROSTORIJE	VRSTA PODA	POVRŠINA PODA	KOEF.	KORISNA POVRŠINA
1	Ulaz	parket	1.65 m ²	1.00	1.65 m ²
2	Kupatilo	ker. pločice	3.64 m ²	1.00	3.64 m ²
3	kuhinja	ker. pločice	4.05 m ²	1.00	4.05 m ²
4	soba	parket	7.50 m ²	1.00	7.50 m ²
5	dnevna soba	parket	15.59 m ²	1.00	15.59 m ²
6	Terasa	ker. pločice	2.94 m ²	1.00	2.94 m ²
UKUPNO:					35.37 m²
k-0,97:					34.31 m²

Kupac