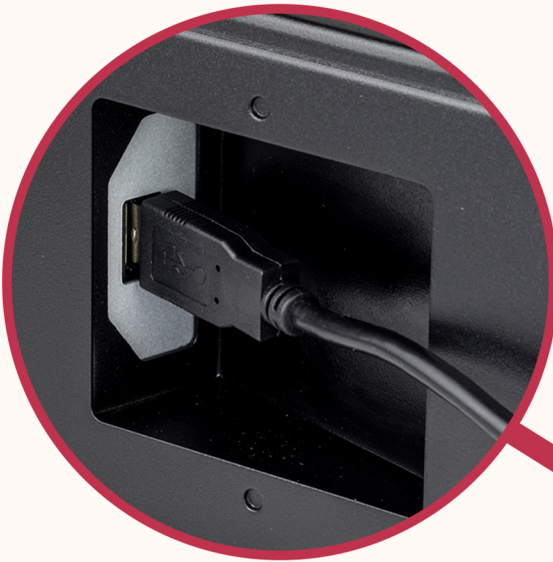


VOLCORRA

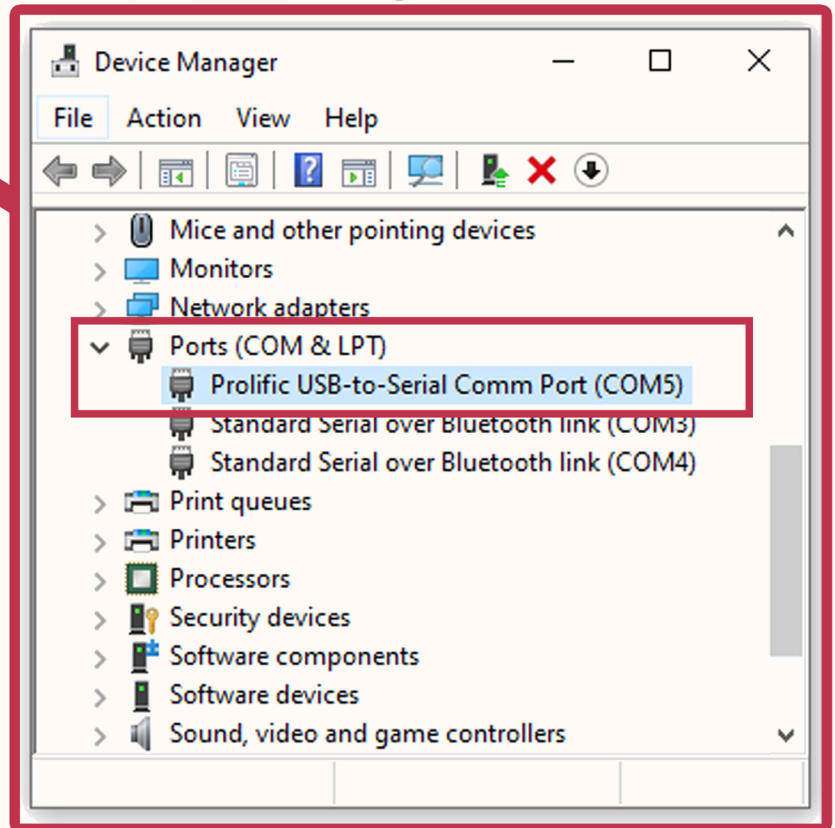
USB CASH DRAWER QUICK SETUP GUIDE

"PLUG AND PLAY" WITH WINDOW 7 AND UP

NO DRIVER INSTALLATION IS REQUIRED



Device Manager on Windows



1 Connect to both side with USB cable

2 Configure your POS software or testing tools to send "Open Cash Drawer" command to the USB adapter device listed as "Prolific USB-to-Serial Comm Port"

See following page for communication commands

For further assistance, contact:
support@volcora.com

Scan or visit below for driver and testing tools :

<https://download.volcora.com>



VOLCORRA

USB CASH DRAWER Command Guidance

**Note: All commands are in hexadecimal representation.
Comprised of 16 symbols: 0-9 and A-F**

APP Command	Description	Response	Description
a5H, d1,d2,d3,d4,cx	"d1, d2, d3, d4" would be passcode to be set	b5H,d1,d2,d3,d4,cx	If the response corresponds to the request command, then the passcode is verified correctly. cx: x is 16 levels of time taken to open battery valve in millisecond (0~15) 【c0~cf】 【40,80,120,160,200,240,280,320,360,400,440,480,520,560,600,640】
0cH, d1,d2,d3,d4	Command to open drawer. "d1, d2, d3, d4" is passcode set	0cH, d1,d2,d3,d4	Response given when request received.
0dH, d1,d2,d3,d4	Command to check status	0dH, d1,d2,d3,d4 1dH, d1,d2,d3,d4	Open Status Closed Status

Sample Command for Opening USB Cash Drawer:

Hex (2 Steps):

1. Set Passcode: 0x0c, 0x01, 0x02, 0x03, 0x04
2. Open: 0xa5, 0x01, 0x02, 0x03, 0x04, 0xc5

OR

Hex (1 Step):

1. Set Passcode & Open: 0x0c, 0x01, 0x02, 0x03, 0x04, 0xc5, 0x00, 0x00, 0x00, 0x00

Decimal (2 Steps):

1. Set Passcode: 12, 1, 2, 3, 4
2. Open: 165, 1, 2, 3, 4, 197

Decimal (1 Step):

1. Set Passcode & Open: 12, 1, 2, 3, 4, 197, 0, 0, 0, 0

Scan or visit below for driver and testing tools :

<https://download.volcora.com>