



Medical Spinal System

4U Medikal Spinal Sistem



Screw & Rod System

Cervical Plates & Screws

*Cervical Mobil
Disc Prosthesis*

*Cervical & Lumbar
Corpectomy Cages*

Cervical Peek Cages

Lumbar Peek Cages

Instrument Systems

**PRODUCT
CATALOGUE**

A woman in a white leotard is captured in a dynamic backbend pose, her body arched over her knees. She is surrounded by a fine mist of white powder, which is suspended in the air around her. The background is dark, featuring a large, glowing, reddish-orange moon in the upper right corner. The overall atmosphere is dramatic and artistic.

4U[®]

Medical

Keeps You
Moving



I N T R O D U C T I O N

4U Spinal Fixation System is designed to provide immobilization and stabilization as spinal segments as an adjunct to fusion of the cervical, thoracic, lumbar and/or sacral spine.

4U Trauma System is built to replace or support a lost joint or a damaged bone. **4U** Systems are used for the treatment, the stabilization and defects on the spine and joint or other skeletal structures.

4U Spinal Fixation Systems are the next generation in top-loading, top-tightening systems that support a spine and skeleton for optimal deformity correction. Deformity correction requires a comprehensive selection of implants and well designed instruments.

Thus **4U** Spinal Fixation Systems have a wide and high quality series of implants that support anterior & posterior corrective techniques.

It consists of surgically long-term use and implantable devices, different sizes of polyaxial self-tapping pedicle screws, trauma plates&screws, rods in symmetric, bilateral arrangement and setscrews for rod connection.

4U Spinal Fixation Systems are created in sufficient range and specifications.

POSTERIOR SPINAL POLYAXIAL SCREW

4U Medikal Spinal Sistemi; pedikül vidalar, redüksiyon vidaları, multifonksiyonel, kanüllü, cement enjekte edilebilir, pediatrik ve yarı küresel vidalardan oluşur. Pedikül vidalar, monoaxial ve polyaxial olarak 2 alternatifte mevcuttur.

Sistemi oluşturan diğer ürünler transverse konnektör, multiaxial konnektör, hook, lateral ve domino konnektörler, ominoaxial lateral konnektör, flexible hook, sakral vida ve konnektörler ile rod ve vida kilitleme aparatlarıdır.

Vida yerleştirme esnasında, pedikül ve korpusta en az deformasyonu sağlamak amacıyla 3 noktadan self-tapping yapıya sahiptir. Spinal sistem içerisinde ameliyat sırasında karşılaşılabilecek durumlara karşı (osteoporoz, listhesis, rotoskolyoz, sakralizasyon zayıf hastalar v.b.) yeterli çeşitlilikte ve özelliklerde spinal sistem implantları yer alır.

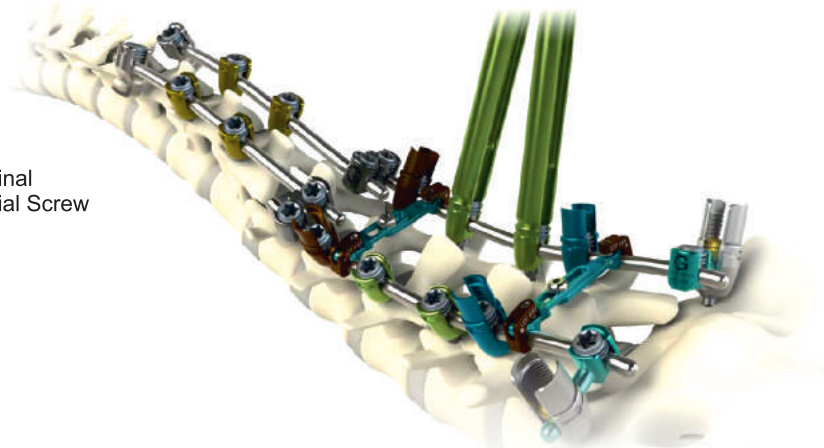
4U Medical Spinal System, pedicle screws, reduction screws, multifunctional, cannulated, cement can be injected, pediatric, consists of semi-spherical screws. Pedicle screws are available in 2 alternatives as monoaxial and polyaxial.

Other products of the system transverse connector, multiaxial connector, hook, lateral and domino connectors, ominoaxial lateral connector, flexible hook and sacral screw and rod and screw connectors and apparatus for locking.

Screw placement during the deformation of the pedicle and the body of at least 3 points in order to ensure self-tapping structure. Against the risks that may be encountered during spinal surgery in the system (osteoporosis, listhesis, rotoskolyoz, pediatric, sacralization thin patients, etc.) Spinal System implants are sufficient range and specifications.



“Kolay bağlantı
Easy connection”





Kullanım Alanı Usage Area

Bu sistem posteolateral spondylodeses, kırıklar, spinal bölgede ortaya çıkan stenosis, vertebral disk aşınımı, vertebral disk fitikleri, başarısız olan füzyon veya pseudoarthrosis tedavisinde ve düzensiz sırt kemiği durumlarında kullanılmak için pedikül vidalar, pedikül kancalar ve laminar kancalardan oluşur.

This system posteolateral spondylodeses, fractures, spinal stenosis occurring in the region, erosion intervertebral disc, intervertebral disc hernia, and uneven treatment of failed back pseudoarthrosis bone fusion or for use in cases of pedicle screws, laminar hooks and pedicle hooks occurs.

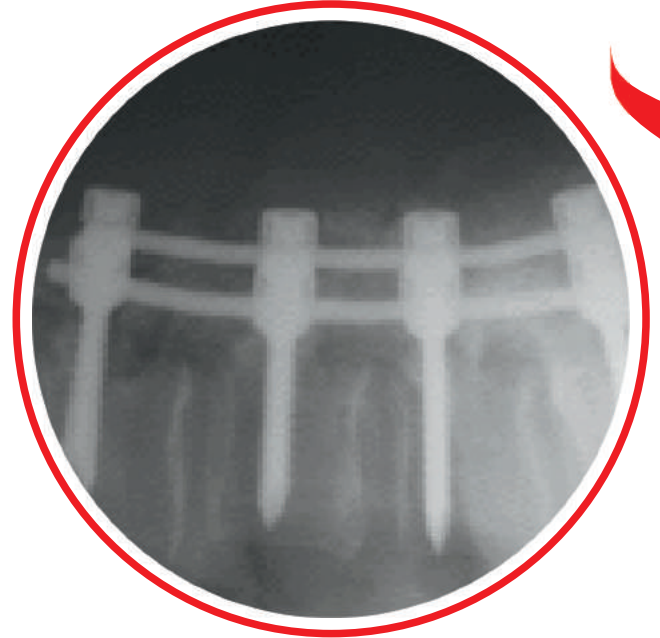


4U Medikal Spinal Rod
Bağlantılı Fiksasyon Sistemi
4U Medical Spinal
Rod to Rod Fixation System

Anatomik Konum Anatomical Location

4U Medikal Spinal Sistem yandaki şekilde gösterildiği gibi X-ışınında görülebilir, kendi stabilizasyonu ile intervertebral eklem yalıtıcısı olarak ve anatomik lordoz korunması için bel ve sakral bölgelerine yerleştirilmek üzere tasarlanmıştır.

4U Medical Spinal System, as shown in the figure can be seen in X-beam, in its stabilization and anatomical lordosis intervertebral joint insulator for the protection of the lumbar and sacral regions and designed to be placed.



Ambalaj Şekli Packaging Description

Vida sistemleri şeffaf bir düşük yoğunluklu esnek polietilen plastik bir torba içinde steril olmayan şekilde ambalajlanmaktadır.

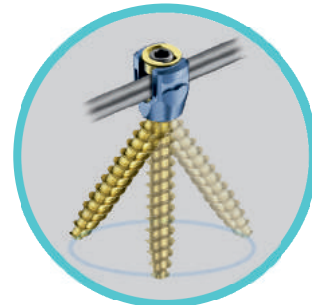
The Screw system is packed as non sterile in a transparent low-density supple polyethylene plastic bag.

POSTERIOR SPINAL POLYAXIAL SCREW

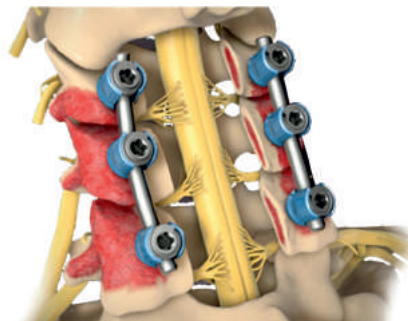
4U Medikal Posterior Spinal Çok Açılı Vida



| AÇIKLAMA / Description | ÖLÇÜ / Size | KOD / Code |
|---|-------------|--------------------|
| 4U SPINAL PEDICLE POSTERIOR POLYAXIAL SCREW Ø:3.5 L25mm | 3.5X25 | 1103525 |
| 4U SPINAL PEDICLE POSTERIOR POLYAXIAL SCREW Ø:3.5 L30mm | 3.5X30 | 1103530 |
| 4U SPINAL PEDICLE POSTERIOR POLYAXIAL SCREW Ø:3.5 L35mm | 3.5X35 | 1103535 |
| 4U SPINAL PEDICLE POSTERIOR POLYAXIAL SCREW Ø:3.5 L40mm | 3.5X40 | 1103540 |
| 4U SPINAL PEDICLE POSTERIOR POLYAXIAL SCREW Ø:3.5 L45mm | 3.5X45 | 1103545 |
| 4U SPINAL PEDICLE POSTERIOR POLYAXIAL SCREW Ø:4.0 L25mm | 4.0X25 | SPECIAL PRODUCTION |
| 4U SPINAL PEDICLE POSTERIOR POLYAXIAL SCREW Ø:4.0 L30mm | 4.0X30 | SPECIAL PRODUCTION |
| 4U SPINAL PEDICLE POSTERIOR POLYAXIAL SCREW Ø:4.0 L35mm | 4.0X35 | SPECIAL PRODUCTION |
| 4U SPINAL PEDICLE POSTERIOR POLYAXIAL SCREW Ø:4.0 L40mm | 4.0X40 | SPECIAL PRODUCTION |
| 4U SPINAL PEDICLE POSTERIOR POLYAXIAL SCREW Ø:4.0 L45mm | 4.0X45 | SPECIAL PRODUCTION |
| 4U SPINAL PEDICLE POSTERIOR POLYAXIAL SCREW Ø:4.5 L25mm | 4.5X25 | 1104525 |
| 4U SPINAL PEDICLE POSTERIOR POLYAXIAL SCREW Ø:4.5 L30mm | 4.5X30 | 1104530 |
| 4U SPINAL PEDICLE POSTERIOR POLYAXIAL SCREW Ø:4.5 L35mm | 4.5X35 | 1104535 |
| 4U SPINAL PEDICLE POSTERIOR POLYAXIAL SCREW Ø:4.5 L40mm | 4.5X40 | 1104540 |
| 4U SPINAL PEDICLE POSTERIOR POLYAXIAL SCREW Ø:4.5 L45mm | 4.5X45 | 1104545 |
| 4U SPINAL PEDICLE POSTERIOR POLYAXIAL SCREW Ø:4.5 L50mm | 4.5X50 | SPECIAL PRODUCTION |
| 4U SPINAL PEDICLE POSTERIOR POLYAXIAL SCREW Ø:5.0 L30mm | 5.0X30 | 1105030 |
| 4U SPINAL PEDICLE POSTERIOR POLYAXIAL SCREW Ø:5.0 L35mm | 5.0X35 | 1105035 |
| 4U SPINAL PEDICLE POSTERIOR POLYAXIAL SCREW Ø:5.0 L40mm | 5.0X40 | 1105040 |
| 4U SPINAL PEDICLE POSTERIOR POLYAXIAL SCREW Ø:5.0 L45mm | 5.0X45 | 1105045 |
| 4U SPINAL PEDICLE POSTERIOR POLYAXIAL SCREW Ø:5.0 L50mm | 5.0X50 | 1105050 |
| 4U SPINAL PEDICLE POSTERIOR POLYAXIAL SCREW Ø:5.0 L55mm | 5.0X55 | SPECIAL PRODUCTION |
| 4U SPINAL PEDICLE POSTERIOR POLYAXIAL SCREW Ø:5.5 L30mm | 5.5X30 | 1105530 |
| 4U SPINAL PEDICLE POSTERIOR POLYAXIAL SCREW Ø:5.5 L35mm | 5.5X35 | 1105535 |
| 4U SPINAL PEDICLE POSTERIOR POLYAXIAL SCREW Ø:5.5 L40mm | 5.5X40 | 1105540 |
| 4U SPINAL PEDICLE POSTERIOR POLYAXIAL SCREW Ø:5.5 L45mm | 5.5X45 | 1105545 |
| 4U SPINAL PEDICLE POSTERIOR POLYAXIAL SCREW Ø:5.5 L50mm | 5.5X50 | 1105550 |
| 4U SPINAL PEDICLE POSTERIOR POLYAXIAL SCREW Ø:5.5 L55mm | 5.5X55 | 1105555 |
| 4U SPINAL PEDICLE POSTERIOR POLYAXIAL SCREW Ø:6.0 L30mm | 6.0X30 | 1106030 |
| 4U SPINAL PEDICLE POSTERIOR POLYAXIAL SCREW Ø:6.0 L35mm | 6.0X35 | 1106035 |
| 4U SPINAL PEDICLE POSTERIOR POLYAXIAL SCREW Ø:6.0 L40mm | 6.0X40 | 1106040 |
| 4U SPINAL PEDICLE POSTERIOR POLYAXIAL SCREW Ø:6.0 L45mm | 6.0X45 | 1106045 |
| 4U SPINAL PEDICLE POSTERIOR POLYAXIAL SCREW Ø:6.0 L50mm | 6.0X50 | 1106050 |
| 4U SPINAL PEDICLE POSTERIOR POLYAXIAL SCREW Ø:6.0 L55mm | 6.0X55 | 1106055 |
| 4U SPINAL PEDICLE POSTERIOR POLYAXIAL SCREW Ø:6.5 L30mm | 6.5X30 | 1106530 |
| 4U SPINAL PEDICLE POSTERIOR POLYAXIAL SCREW Ø:6.5 L35mm | 6.5X35 | 1106535 |
| 4U SPINAL PEDICLE POSTERIOR POLYAXIAL SCREW Ø:6.5 L40mm | 6.5X40 | 1106540 |
| 4U SPINAL PEDICLE POSTERIOR POLYAXIAL SCREW Ø:6.5 L45mm | 6.5X45 | 1106545 |
| 4U SPINAL PEDICLE POSTERIOR POLYAXIAL SCREW Ø:6.5 L50mm | 6.5X50 | 1106550 |
| 4U SPINAL PEDICLE POSTERIOR POLYAXIAL SCREW Ø:6.5 L55mm | 6.5X55 | 1106555 |



| AÇIKLAMA / Description | ÖLÇÜ / Size | KOD / Code |
|--|-------------|--------------------|
| 4U SPINAL PEDICLE POSTERIOR POLYAXIAL SCREW Ø:7.0 L30mm | 7.0X30 | SPECIAL PRODUCTION |
| 4U SPINAL PEDICLE POSTERIOR POLYAXIAL SCREW Ø:7.0 L35mm | 7.0X35 | 1107035 |
| 4U SPINAL PEDICLE POSTERIOR POLYAXIAL SCREW Ø:7.0 L40mm | 7.0X40 | 1107040 |
| 4U SPINAL PEDICLE POSTERIOR POLYAXIAL SCREW Ø:7.0 L45mm | 7.0X45 | 1107045 |
| 4U SPINAL PEDICLE POSTERIOR POLYAXIAL SCREW Ø:7.0 L50mm | 7.0X50 | 1107050 |
| 4U SPINAL PEDICLE POSTERIOR POLYAXIAL SCREW Ø:7.0 L55mm | 7.0X55 | 1107055 |
| 4U SPINAL PEDICLE POSTERIOR POLYAXIAL SCREW Ø:7.0 L60mm | 7.0X60 | 1107060 |
| 4U SPINAL PEDICLE POSTERIOR POLYAXIAL SCREW Ø:7.0 L65mm | 7.0X65 | SPECIAL PRODUCTION |
| 4U SPINAL PEDICLE POSTERIOR POLYAXIAL SCREW Ø:7.0 L70mm | 7.0X70 | SPECIAL PRODUCTION |
| 4U SPINAL PEDICLE POSTERIOR POLYAXIAL SCREW Ø:7.0 L75mm | 7.0X75 | SPECIAL PRODUCTION |
| 4U SPINAL PEDICLE POSTERIOR POLYAXIAL SCREW Ø:7.0 L80mm | 7.0X80 | SPECIAL PRODUCTION |
| 4U SPINAL PEDICLE POSTERIOR POLYAXIAL SCREW Ø:7.0 L85mm | 7.0X85 | SPECIAL PRODUCTION |
| 4U SPINAL PEDICLE POSTERIOR POLYAXIAL SCREW Ø:7.0 L90mm | 7.0X90 | SPECIAL PRODUCTION |
| 4U SPINAL PEDICLE POSTERIOR POLYAXIAL SCREW Ø:7.0 L95mm | 7.0X95 | SPECIAL PRODUCTION |
| 4U SPINAL PEDICLE POSTERIOR POLYAXIAL SCREW Ø:7.0 L100mm | 7.0X100 | SPECIAL PRODUCTION |
| 4U SPINAL PEDICLE POSTERIOR POLYAXIAL SCREW Ø:7.5 L30mm | 7.5X30 | 1107530 |
| 4U SPINAL PEDICLE POSTERIOR POLYAXIAL SCREW Ø:7.5 L35mm | 7.5X35 | 1107535 |
| 4U SPINAL PEDICLE POSTERIOR POLYAXIAL SCREW Ø:7.5 L40mm | 7.5X40 | 1107540 |
| 4U SPINAL PEDICLE POSTERIOR POLYAXIAL SCREW Ø:7.5 L45mm | 7.5X45 | 1107545 |
| 4U SPINAL PEDICLE POSTERIOR POLYAXIAL SCREW Ø:7.5 L50mm | 7.5X50 | 1107550 |
| 4U SPINAL PEDICLE POSTERIOR POLYAXIAL SCREW Ø:7.5 L55mm | 7.5X55 | 1107555 |
| 4U SPINAL PEDICLE POSTERIOR POLYAXIAL SCREW Ø:7.5 L60mm | 7.5X60 | SPECIAL PRODUCTION |
| 4U SPINAL PEDICLE POSTERIOR POLYAXIAL SCREW Ø:7.5 L65mm | 7.5X65 | SPECIAL PRODUCTION |
| 4U SPINAL PEDICLE POSTERIOR POLYAXIAL SCREW Ø:7.5 L70mm | 7.5X70 | SPECIAL PRODUCTION |
| 4U SPINAL PEDICLE POSTERIOR POLYAXIAL SCREW Ø:7.5 L75mm | 7.5X75 | SPECIAL PRODUCTION |
| 4U SPINAL PEDICLE POSTERIOR POLYAXIAL SCREW Ø:7.5 L80mm | 7.5X80 | SPECIAL PRODUCTION |
| 4U SPINAL PEDICLE POSTERIOR POLYAXIAL SCREW Ø:7.5 L85mm | 7.5X85 | SPECIAL PRODUCTION |
| 4U SPINAL PEDICLE POSTERIOR POLYAXIAL SCREW Ø:7.5 L90mm | 7.5X90 | SPECIAL PRODUCTION |
| 4U SPINAL PEDICLE POSTERIOR POLYAXIAL SCREW Ø:7.5 L95mm | 7.5X95 | SPECIAL PRODUCTION |
| 4U SPINAL PEDICLE POSTERIOR POLYAXIAL SCREW Ø:7.5 L100mm | 7.5X100 | SPECIAL PRODUCTION |
| 4U SPINAL PEDICLE POSTERIOR POLYAXIAL SCREW Ø:8.0 L30mm | 8.0X30 | 1108030 |
| 4U SPINAL PEDICLE POSTERIOR POLYAXIAL SCREW Ø:8.0 L35mm | 8.0X35 | 1108035 |
| 4U SPINAL PEDICLE POSTERIOR POLYAXIAL SCREW Ø:8.0 L40mm | 8.0X40 | 1108040 |
| 4U SPINAL PEDICLE POSTERIOR POLYAXIAL SCREW Ø:8.0 L45mm | 8.0X45 | 1108045 |
| 4U SPINAL PEDICLE POSTERIOR POLYAXIAL SCREW Ø:8.0 L50mm | 8.0X50 | 1108050 |
| 4U SPINAL PEDICLE POSTERIOR POLYAXIAL SCREW Ø:8.0 L55mm | 8.0X55 | 1108055 |
| 4U SPINAL PEDICLE POSTERIOR POLYAXIAL SCREW Ø:8.0 L60mm | 8.0X60 | SPECIAL PRODUCTION |
| 4U SPINAL PEDICLE POSTERIOR POLYAXIAL SCREW Ø:8.0 L65mm | 8.0X65 | SPECIAL PRODUCTION |
| 4U SPINAL PEDICLE POSTERIOR POLYAXIAL SCREW Ø:8.0 L70mm | 8.0X70 | 1108070 |
| 4U SPINAL PEDICLE POSTERIOR POLYAXIAL SCREW Ø:8.0 L75mm | 8.0X75 | SPECIAL PRODUCTION |
| 4U SPINAL PEDICLE POSTERIOR POLYAXIAL SCREW Ø:8.0 L80mm | 8.0X80 | 1108080 |
| 4U SPINAL PEDICLE POSTERIOR POLYAXIAL SCREW Ø:8.0 L85mm | 8.0X85 | SPECIAL PRODUCTION |
| 4U SPINAL PEDICLE POSTERIOR POLYAXIAL SCREW Ø:8.0 L90mm | 8.0X90 | 1108090 |
| 4U SPINAL PEDICLE POSTERIOR POLYAXIAL SCREW Ø:8.0 L95mm | 8.0X95 | SPECIAL PRODUCTION |
| 4U SPINAL PEDICLE POSTERIOR POLYAXIAL SCREW Ø:8.0 L100mm | 8.0X100 | 1108010 |



SPINAL POSTERIOR MULTIFUNCTIONAL PEDICLE SCREW

4U Medikal Spinal Posterior Multifonksiyonel Pediküler Vida

CE

| AÇIKLAMA / Description | ÖLÇÜ / Size | KOD / Code |
|---|-------------|--------------------|
| ■ 4U SPINAL POSTERIOR MULTIFUNCTIONAL PEDICLE SCREW Ø:3.5 L25mm | 3.5X25 | 1203525 |
| □ 4U SPINAL POSTERIOR MULTIFUNCTIONAL PEDICLE SCREW Ø:3.5 L30mm | 3.5X30 | 1203530 |
| ■ 4U SPINAL POSTERIOR MULTIFUNCTIONAL PEDICLE SCREW Ø:3.5 L35mm | 3.5X35 | 1203535 |
| □ 4U SPINAL POSTERIOR MULTIFUNCTIONAL PEDICLE SCREW Ø:3.5 L40mm | 3.5X40 | 1203540 |
| ■ 4U SPINAL POSTERIOR MULTIFUNCTIONAL PEDICLE SCREW Ø:3.5 L45mm | 3.5X45 | 1203545 |
| □ 4U SPINAL POSTERIOR MULTIFUNCTIONAL PEDICLE SCREW Ø:4.0 L25mm | 4.0X25 | SPECIAL PRODUCTION |
| ■ 4U SPINAL POSTERIOR MULTIFUNCTIONAL PEDICLE SCREW Ø:4.0 L30mm | 4.0X30 | SPECIAL PRODUCTION |
| □ 4U SPINAL POSTERIOR MULTIFUNCTIONAL PEDICLE SCREW Ø:4.0 L35mm | 4.0X35 | SPECIAL PRODUCTION |
| ■ 4U SPINAL POSTERIOR MULTIFUNCTIONAL PEDICLE SCREW Ø:4.0 L40mm | 4.0X40 | SPECIAL PRODUCTION |
| □ 4U SPINAL POSTERIOR MULTIFUNCTIONAL PEDICLE SCREW Ø:4.0 L45mm | 4.0X45 | SPECIAL PRODUCTION |
| ■ 4U SPINAL POSTERIOR MULTIFUNCTIONAL PEDICLE SCREW Ø:4.5 L25mm | 4.5X25 | 1204525 |
| □ 4U SPINAL POSTERIOR MULTIFUNCTIONAL PEDICLE SCREW Ø:4.5 L30mm | 4.5X30 | 1204530 |
| ■ 4U SPINAL POSTERIOR MULTIFUNCTIONAL PEDICLE SCREW Ø:4.5 L35mm | 4.5X35 | 1204535 |
| □ 4U SPINAL POSTERIOR MULTIFUNCTIONAL PEDICLE SCREW Ø:4.5 L40mm | 4.5X40 | 1204540 |
| ■ 4U SPINAL POSTERIOR MULTIFUNCTIONAL PEDICLE SCREW Ø:4.5 L45mm | 4.5X45 | 1204545 |
| □ 4U SPINAL POSTERIOR MULTIFUNCTIONAL PEDICLE SCREW Ø:4.5 L50mm | 4.5X50 | SPECIAL PRODUCTION |
| ■ 4U SPINAL POSTERIOR MULTIFUNCTIONAL PEDICLE SCREW Ø:5.0 L30mm | 5.0X30 | 1205030 |
| □ 4U SPINAL POSTERIOR MULTIFUNCTIONAL PEDICLE SCREW Ø:5.0 L35mm | 5.0X35 | 1205035 |
| ■ 4U SPINAL POSTERIOR MULTIFUNCTIONAL PEDICLE SCREW Ø:5.0 L40mm | 5.0X40 | 1205040 |
| □ 4U SPINAL POSTERIOR MULTIFUNCTIONAL PEDICLE SCREW Ø:5.0 L45mm | 5.0X45 | 1205045 |
| ■ 4U SPINAL POSTERIOR MULTIFUNCTIONAL PEDICLE SCREW Ø:5.0 L50mm | 5.0X50 | 1205050 |
| □ 4U SPINAL POSTERIOR MULTIFUNCTIONAL PEDICLE SCREW Ø:5.0 L55mm | 5.0X55 | 1205055 |
| ■ 4U SPINAL POSTERIOR MULTIFUNCTIONAL PEDICLE SCREW Ø:5.5 L30mm | 5.5X30 | 1205530 |
| □ 4U SPINAL POSTERIOR MULTIFUNCTIONAL PEDICLE SCREW Ø:5.5 L35mm | 5.5X35 | 1205535 |
| ■ 4U SPINAL POSTERIOR MULTIFUNCTIONAL PEDICLE SCREW Ø:5.5 L40mm | 5.5X40 | 1205540 |
| □ 4U SPINAL POSTERIOR MULTIFUNCTIONAL PEDICLE SCREW Ø:5.5 L45mm | 5.5X45 | 1205545 |
| ■ 4U SPINAL POSTERIOR MULTIFUNCTIONAL PEDICLE SCREW Ø:5.5 L50mm | 5.5X50 | 1205550 |
| □ 4U SPINAL POSTERIOR MULTIFUNCTIONAL PEDICLE SCREW Ø:5.5 L55mm | 5.5X55 | 1205555 |
| ■ 4U SPINAL POSTERIOR MULTIFUNCTIONAL PEDICLE SCREW Ø:6.0 L30mm | 6.0X30 | SPECIAL PRODUCTION |
| □ 4U SPINAL POSTERIOR MULTIFUNCTIONAL PEDICLE SCREW Ø:6.0 L35mm | 6.0X35 | 1206035 |
| ■ 4U SPINAL POSTERIOR MULTIFUNCTIONAL PEDICLE SCREW Ø:6.0 L40mm | 6.0X40 | 1206040 |
| □ 4U SPINAL POSTERIOR MULTIFUNCTIONAL PEDICLE SCREW Ø:6.0 L45mm | 6.0X45 | 1206045 |
| ■ 4U SPINAL POSTERIOR MULTIFUNCTIONAL PEDICLE SCREW Ø:6.0 L50mm | 6.0X50 | 1206050 |
| □ 4U SPINAL POSTERIOR MULTIFUNCTIONAL PEDICLE SCREW Ø:6.0 L55mm | 6.0X55 | 1206055 |



"Yenilikçi tasarımlar"
Innovative designs



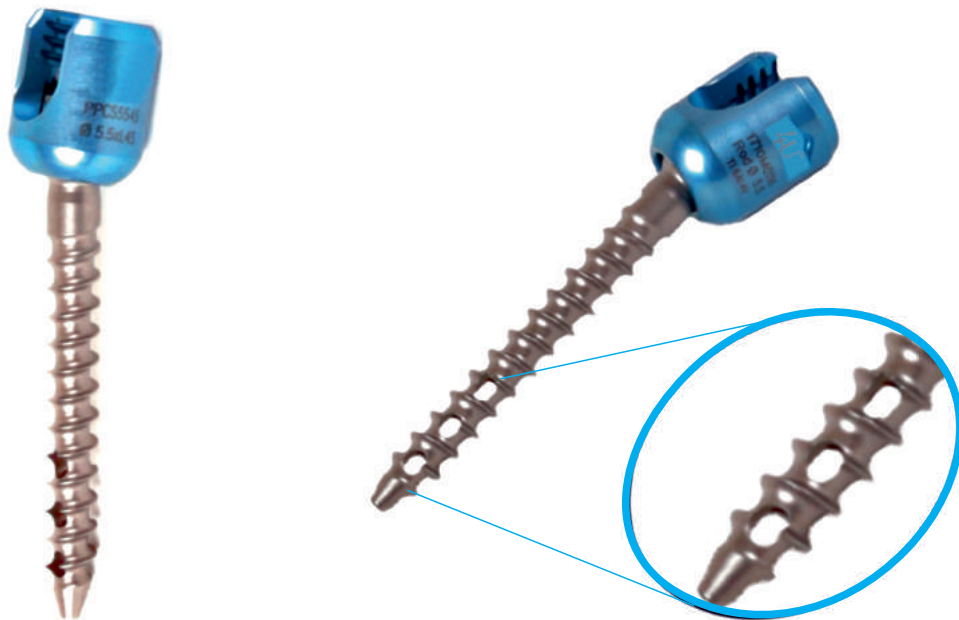
| AÇIKLAMA / Description | ÖLÇÜ / Size | KOD / Code |
|--|-------------|--------------------|
| 4U SPINAL POSTERIOR MULTIFUNCTIONAL PEDICLE SCREW Ø:6.5 L30mm | 6.5X30 | 1206530 |
| 4U SPINAL POSTERIOR MULTIFUNCTIONAL PEDICLE SCREW Ø:6.5 L35mm | 6.5X35 | 1206535 |
| 4U SPINAL POSTERIOR MULTIFUNCTIONAL PEDICLE SCREW Ø:6.5 L40mm | 6.5X40 | 1206540 |
| 4U SPINAL POSTERIOR MULTIFUNCTIONAL PEDICLE SCREW Ø:6.5 L45mm | 6.5X45 | 1206545 |
| 4U SPINAL POSTERIOR MULTIFUNCTIONAL PEDICLE SCREW Ø:6.5 L50mm | 6.5X50 | 1206550 |
| 4U SPINAL POSTERIOR MULTIFUNCTIONAL PEDICLE SCREW Ø:6.5 L55mm | 6.5X55 | 1206555 |
| 4U SPINAL POSTERIOR MULTIFUNCTIONAL PEDICLE SCREW Ø:7.0 L30mm | 7.0X30 | SPECIAL PRODUCTION |
| 4U SPINAL POSTERIOR MULTIFUNCTIONAL PEDICLE SCREW Ø:7.0 L35mm | 7.0X35 | 1207035 |
| 4U SPINAL POSTERIOR MULTIFUNCTIONAL PEDICLE SCREW Ø:7.0 L40mm | 7.0X40 | 1207040 |
| 4U SPINAL POSTERIOR MULTIFUNCTIONAL PEDICLE SCREW Ø:7.0 L45mm | 7.0X45 | 1207045 |
| 4U SPINAL POSTERIOR MULTIFUNCTIONAL PEDICLE SCREW Ø:7.0 L50mm | 7.0X50 | 1207050 |
| 4U SPINAL POSTERIOR MULTIFUNCTIONAL PEDICLE SCREW Ø:7.0 L55mm | 7.0X55 | 1207055 |
| 4U SPINAL POSTERIOR MULTIFUNCTIONAL PEDICLE SCREW Ø:7.0 L60mm | 7.0X60 | SPECIAL PRODUCTION |
| 4U SPINAL POSTERIOR MULTIFUNCTIONAL PEDICLE SCREW Ø:7.0 L65mm | 7.0X65 | SPECIAL PRODUCTION |
| 4U SPINAL POSTERIOR MULTIFUNCTIONAL PEDICLE SCREW Ø:7.0 L70mm | 7.0X70 | SPECIAL PRODUCTION |
| 4U SPINAL POSTERIOR MULTIFUNCTIONAL PEDICLE SCREW Ø:7.0 L75mm | 7.0X75 | SPECIAL PRODUCTION |
| 4U SPINAL POSTERIOR MULTIFUNCTIONAL PEDICLE SCREW Ø:7.0 L80mm | 7.0X80 | SPECIAL PRODUCTION |
| 4U SPINAL POSTERIOR MULTIFUNCTIONAL PEDICLE SCREW Ø:7.0 L85mm | 7.0X85 | SPECIAL PRODUCTION |
| 4U SPINAL POSTERIOR MULTIFUNCTIONAL PEDICLE SCREW Ø:7.0 L90mm | 7.0X90 | SPECIAL PRODUCTION |
| 4U SPINAL POSTERIOR MULTIFUNCTIONAL PEDICLE SCREW Ø:7.0 L95mm | 7.0X95 | SPECIAL PRODUCTION |
| 4U SPINAL POSTERIOR MULTIFUNCTIONAL PEDICLE SCREW Ø:7.0 L100mm | 7.0X100 | SPECIAL PRODUCTION |
| 4U SPINAL POSTERIOR MULTIFUNCTIONAL PEDICLE SCREW Ø:7.5 L30mm | 7.5X30 | 1207530 |
| 4U SPINAL POSTERIOR MULTIFUNCTIONAL PEDICLE SCREW Ø:7.5 L35mm | 7.5X35 | 1207535 |
| 4U SPINAL POSTERIOR MULTIFUNCTIONAL PEDICLE SCREW Ø:7.5 L40mm | 7.5X40 | 1207540 |
| 4U SPINAL POSTERIOR MULTIFUNCTIONAL PEDICLE SCREW Ø:7.5 L45mm | 7.5X45 | 1207545 |
| 4U SPINAL POSTERIOR MULTIFUNCTIONAL PEDICLE SCREW Ø:7.5 L50mm | 7.5X50 | 1207550 |
| 4U SPINAL POSTERIOR MULTIFUNCTIONAL PEDICLE SCREW Ø:7.5 L55mm | 7.5X55 | 1207555 |
| 4U SPINAL POSTERIOR MULTIFUNCTIONAL PEDICLE SCREW Ø:7.5 L60mm | 7.5X60 | SPECIAL PRODUCTION |
| 4U SPINAL POSTERIOR MULTIFUNCTIONAL PEDICLE SCREW Ø:7.5 L65mm | 7.5X65 | SPECIAL PRODUCTION |
| 4U SPINAL POSTERIOR MULTIFUNCTIONAL PEDICLE SCREW Ø:7.5 L70mm | 7.5X70 | SPECIAL PRODUCTION |
| 4U SPINAL POSTERIOR MULTIFUNCTIONAL PEDICLE SCREW Ø:7.5 L75mm | 7.5X75 | SPECIAL PRODUCTION |
| 4U SPINAL POSTERIOR MULTIFUNCTIONAL PEDICLE SCREW Ø:7.5 L80mm | 7.5X80 | SPECIAL PRODUCTION |
| 4U SPINAL POSTERIOR MULTIFUNCTIONAL PEDICLE SCREW Ø:7.5 L85mm | 7.5X85 | SPECIAL PRODUCTION |
| 4U SPINAL POSTERIOR MULTIFUNCTIONAL PEDICLE SCREW Ø:7.5 L90mm | 7.5X90 | SPECIAL PRODUCTION |
| 4U SPINAL POSTERIOR MULTIFUNCTIONAL PEDICLE SCREW Ø:7.5 L95mm | 7.5X95 | SPECIAL PRODUCTION |
| 4U SPINAL POSTERIOR MULTIFUNCTIONAL PEDICLE SCREW Ø:7.5 L100mm | 7.5X100 | SPECIAL PRODUCTION |
| 4U SPINAL POSTERIOR MULTIFUNCTIONAL PEDICLE SCREW Ø:8.0 L30mm | 8.0X30 | 1208030 |
| 4U SPINAL POSTERIOR MULTIFUNCTIONAL PEDICLE SCREW Ø:8.0 L35mm | 8.0X35 | 1208035 |
| 4U SPINAL POSTERIOR MULTIFUNCTIONAL PEDICLE SCREW Ø:8.0 L40mm | 8.0X40 | 1208040 |
| 4U SPINAL POSTERIOR MULTIFUNCTIONAL PEDICLE SCREW Ø:8.0 L45mm | 8.0X45 | 1208045 |
| 4U SPINAL POSTERIOR MULTIFUNCTIONAL PEDICLE SCREW Ø:8.0 L50mm | 8.0X50 | 1208050 |
| 4U SPINAL POSTERIOR MULTIFUNCTIONAL PEDICLE SCREW Ø:8.0 L55mm | 8.0X55 | 1208055 |
| 4U SPINAL POSTERIOR MULTIFUNCTIONAL PEDICLE SCREW Ø:8.0 L60mm | 8.0X60 | 1208060 |
| 4U SPINAL POSTERIOR MULTIFUNCTIONAL PEDICLE SCREW Ø:8.0 L65mm | 8.0X65 | 1208065 |
| 4U SPINAL POSTERIOR MULTIFUNCTIONAL PEDICLE SCREW Ø:8.0 L70mm | 8.0X70 | 1208070 |
| 4U SPINAL POSTERIOR MULTIFUNCTIONAL PEDICLE SCREW Ø:8.0 L75mm | 8.0X75 | SPECIAL PRODUCTION |
| 4U SPINAL POSTERIOR MULTIFUNCTIONAL PEDICLE SCREW Ø:8.0 L80mm | 8.0X80 | SPECIAL PRODUCTION |
| 4U SPINAL POSTERIOR MULTIFUNCTIONAL PEDICLE SCREW Ø:8.0 L85mm | 8.0X85 | SPECIAL PRODUCTION |
| 4U SPINAL POSTERIOR MULTIFUNCTIONAL PEDICLE SCREW Ø:8.0 L90mm | 8.0X90 | SPECIAL PRODUCTION |
| 4U SPINAL POSTERIOR MULTIFUNCTIONAL PEDICLE SCREW Ø:8.0 L95mm | 8.0X95 | SPECIAL PRODUCTION |
| 4U SPINAL POSTERIOR MULTIFUNCTIONAL PEDICLE SCREW Ø:8.0 L100mm | 8.0X100 | SPECIAL PRODUCTION |

SPINAL PEDICLE POSTERIOR POLYAXIAL CANNULATED-CEMENT SCREW

4U Medikal Spinal Pediküler Posterior Çok Açılı Kanüllü Sementli Vida



| AÇIKLAMA / Description | ÖLÇÜ / Size | KOD / Code |
|---|-------------|--------------------|
| 4U SPINAL PEDICLE POSTERIOR POLYAXIAL CANNULATED-CEMENT SCREW Ø:4.5 L30mm | 4.5X30 | 1704530 |
| 4U SPINAL PEDICLE POSTERIOR POLYAXIAL CANNULATED-CEMENT SCREW Ø:4.5 L35mm | 4.5X35 | 1704535 |
| 4U SPINAL PEDICLE POSTERIOR POLYAXIAL CANNULATED-CEMENT SCREW Ø:4.5 L40mm | 4.5X40 | 1704540 |
| 4U SPINAL PEDICLE POSTERIOR POLYAXIAL CANNULATED-CEMENT SCREW Ø:4.5 L45mm | 4.5X45 | 1704545 |
| 4U SPINAL PEDICLE POSTERIOR POLYAXIAL CANNULATED-CEMENT SCREW Ø:4.5 L50mm | 4.5X50 | 1704550 |
| 4U SPINAL PEDICLE POSTERIOR POLYAXIAL CANNULATED-CEMENT SCREW Ø:4.5 L55mm | 4.5X55 | 1704555 |
| 4U SPINAL PEDICLE POSTERIOR POLYAXIAL CANNULATED-CEMENT SCREW Ø:5.0 L30mm | 5.0X30 | SPECIAL PRODUCTION |
| 4U SPINAL PEDICLE POSTERIOR POLYAXIAL CANNULATED-CEMENT SCREW Ø:5.0 L35mm | 5.0X35 | 1705035 |
| 4U SPINAL PEDICLE POSTERIOR POLYAXIAL CANNULATED-CEMENT SCREW Ø:5.0 L40mm | 5.0X40 | 1705040 |
| 4U SPINAL PEDICLE POSTERIOR POLYAXIAL CANNULATED-CEMENT SCREW Ø:5.0 L45mm | 5.0X45 | 1705045 |
| 4U SPINAL PEDICLE POSTERIOR POLYAXIAL CANNULATED-CEMENT SCREW Ø:5.0 L50mm | 5.0X50 | 1705050 |
| 4U SPINAL PEDICLE POSTERIOR POLYAXIAL CANNULATED-CEMENT SCREW Ø:5.0 L55mm | 5.0X55 | 1705055 |
| 4U SPINAL PEDICLE POSTERIOR POLYAXIAL CANNULATED-CEMENT SCREW Ø:5.5 L30mm | 5.5X30 | 1705530 |
| 4U SPINAL PEDICLE POSTERIOR POLYAXIAL CANNULATED-CEMENT SCREW Ø:5.5 L35mm | 5.5X35 | 1705535 |
| 4U SPINAL PEDICLE POSTERIOR POLYAXIAL CANNULATED-CEMENT SCREW Ø:5.5 L40mm | 5.5X40 | 1705540 |
| 4U SPINAL PEDICLE POSTERIOR POLYAXIAL CANNULATED-CEMENT SCREW Ø:5.5 L45mm | 5.5X45 | 1705545 |
| 4U SPINAL PEDICLE POSTERIOR POLYAXIAL CANNULATED-CEMENT SCREW Ø:5.5 L50mm | 5.5X50 | 1705550 |
| 4U SPINAL PEDICLE POSTERIOR POLYAXIAL CANNULATED-CEMENT SCREW Ø:5.5 L55mm | 5.5X55 | 1705555 |
| 4U SPINAL PEDICLE POSTERIOR POLYAXIAL CANNULATED-CEMENT SCREW Ø:6.0 L30mm | 6.0X30 | SPECIAL PRODUCTION |
| 4U SPINAL PEDICLE POSTERIOR POLYAXIAL CANNULATED-CEMENT SCREW Ø:6.0 L35mm | 6.0X35 | 1706035 |
| 4U SPINAL PEDICLE POSTERIOR POLYAXIAL CANNULATED-CEMENT SCREW Ø:6.0 L40mm | 6.0X40 | 1706040 |
| 4U SPINAL PEDICLE POSTERIOR POLYAXIAL CANNULATED-CEMENT SCREW Ø:6.0 L45mm | 6.0X45 | 1706045 |
| 4U SPINAL PEDICLE POSTERIOR POLYAXIAL CANNULATED-CEMENT SCREW Ø:6.0 L50mm | 6.0X50 | 1706050 |
| 4U SPINAL PEDICLE POSTERIOR POLYAXIAL CANNULATED-CEMENT SCREW Ø:6.0 L55mm | 6.0X55 | 1706055 |



"Yenilikçi tasarımlar"
Innovative designs™



| AÇIKLAMA / Description | ÖLÇÜ / Size | KOD / Code |
|---|-------------|--------------------|
| 4U SPINAL PEDICLE POSTERIOR POLYAXIAL CANNULATED-CEMENT SCREW Ø:4.5 L30mm | 4.5X30 | 1704530 |
| 4U SPINAL PEDICLE POSTERIOR POLYAXIAL CANNULATED-CEMENT SCREW Ø:4.5 L35mm | 4.5X35 | 1704535 |
| 4U SPINAL PEDICLE POSTERIOR POLYAXIAL CANNULATED-CEMENT SCREW Ø:4.5 L40mm | 4.5X40 | 1704540 |
| 4U SPINAL PEDICLE POSTERIOR POLYAXIAL CANNULATED-CEMENT SCREW Ø:4.5 L45mm | 4.5X45 | 1704545 |
| 4U SPINAL PEDICLE POSTERIOR POLYAXIAL CANNULATED-CEMENT SCREW Ø:4.5 L50mm | 4.5X50 | 1704550 |
| 4U SPINAL PEDICLE POSTERIOR POLYAXIAL CANNULATED-CEMENT SCREW Ø:4.5 L55mm | 4.5X55 | 1704555 |
| 4U SPINAL PEDICLE POSTERIOR POLYAXIAL CANNULATED-CEMENT SCREW Ø:5.0 L30mm | 5.0X30 | SPECIAL PRODUCTION |
| 4U SPINAL PEDICLE POSTERIOR POLYAXIAL CANNULATED-CEMENT SCREW Ø:5.0 L35mm | 5.0X35 | 1705035 |
| 4U SPINAL PEDICLE POSTERIOR POLYAXIAL CANNULATED-CEMENT SCREW Ø:5.0 L40mm | 5.0X40 | 1705040 |
| 4U SPINAL PEDICLE POSTERIOR POLYAXIAL CANNULATED-CEMENT SCREW Ø:5.0 L45mm | 5.0X45 | 1705045 |
| 4U SPINAL PEDICLE POSTERIOR POLYAXIAL CANNULATED-CEMENT SCREW Ø:5.0 L50mm | 5.0X50 | 1705050 |
| 4U SPINAL PEDICLE POSTERIOR POLYAXIAL CANNULATED-CEMENT SCREW Ø:5.0 L55mm | 5.0X55 | 1705055 |
| 4U SPINAL PEDICLE POSTERIOR POLYAXIAL CANNULATED-CEMENT SCREW Ø:5.5 L30mm | 5.5X30 | 1705530 |
| 4U SPINAL PEDICLE POSTERIOR POLYAXIAL CANNULATED-CEMENT SCREW Ø:5.5 L35mm | 5.5X35 | 1705535 |
| 4U SPINAL PEDICLE POSTERIOR POLYAXIAL CANNULATED-CEMENT SCREW Ø:5.5 L40mm | 5.5X40 | 1705540 |
| 4U SPINAL PEDICLE POSTERIOR POLYAXIAL CANNULATED-CEMENT SCREW Ø:5.5 L45mm | 5.5X45 | 1705545 |
| 4U SPINAL PEDICLE POSTERIOR POLYAXIAL CANNULATED-CEMENT SCREW Ø:5.5 L50mm | 5.5X50 | 1705550 |
| 4U SPINAL PEDICLE POSTERIOR POLYAXIAL CANNULATED-CEMENT SCREW Ø:5.5 L55mm | 5.5X55 | 1705555 |
| 4U SPINAL PEDICLE POSTERIOR POLYAXIAL CANNULATED-CEMENT SCREW Ø:6.0 L30mm | 6.0X30 | SPECIAL PRODUCTION |
| 4U SPINAL PEDICLE POSTERIOR POLYAXIAL CANNULATED-CEMENT SCREW Ø:6.0 L35mm | 6.0X35 | 1706035 |
| 4U SPINAL PEDICLE POSTERIOR POLYAXIAL CANNULATED-CEMENT SCREW Ø:6.0 L40mm | 6.0X40 | 1706040 |
| 4U SPINAL PEDICLE POSTERIOR POLYAXIAL CANNULATED-CEMENT SCREW Ø:6.0 L45mm | 6.0X45 | 1706045 |
| 4U SPINAL PEDICLE POSTERIOR POLYAXIAL CANNULATED-CEMENT SCREW Ø:6.0 L50mm | 6.0X50 | 1706050 |
| 4U SPINAL PEDICLE POSTERIOR POLYAXIAL CANNULATED-CEMENT SCREW Ø:6.0 L55mm | 6.0X55 | 1706055 |
| 4U SPINAL PEDICLE POSTERIOR POLYAXIAL CANNULATED-CEMENT SCREW Ø:6.5 L30mm | 6.5X30 | 1706530 |
| 4U SPINAL PEDICLE POSTERIOR POLYAXIAL CANNULATED-CEMENT SCREW Ø:6.5 L35mm | 6.5X35 | 1706535 |
| 4U SPINAL PEDICLE POSTERIOR POLYAXIAL CANNULATED-CEMENT SCREW Ø:6.5 L40mm | 6.5X40 | 1706540 |
| 4U SPINAL PEDICLE POSTERIOR POLYAXIAL CANNULATED-CEMENT SCREW Ø:6.5 L45mm | 6.5X45 | 1706545 |
| 4U SPINAL PEDICLE POSTERIOR POLYAXIAL CANNULATED-CEMENT SCREW Ø:6.5 L50mm | 6.5X50 | 1706550 |
| 4U SPINAL PEDICLE POSTERIOR POLYAXIAL CANNULATED-CEMENT SCREW Ø:6.5 L55mm | 6.5X55 | 1706555 |
| 4U SPINAL PEDICLE POSTERIOR POLYAXIAL CANNULATED-CEMENT SCREW Ø:7.0 L30mm | 7.0X30 | 1707030 |
| 4U SPINAL PEDICLE POSTERIOR POLYAXIAL CANNULATED-CEMENT SCREW Ø:7.0 L35mm | 7.0X35 | 1707035 |
| 4U SPINAL PEDICLE POSTERIOR POLYAXIAL CANNULATED-CEMENT SCREW Ø:7.0 L40mm | 7.0X40 | 1707040 |
| 4U SPINAL PEDICLE POSTERIOR POLYAXIAL CANNULATED-CEMENT SCREW Ø:7.0 L45mm | 7.0X45 | 1707045 |
| 4U SPINAL PEDICLE POSTERIOR POLYAXIAL CANNULATED-CEMENT SCREW Ø:7.0 L50mm | 7.0X50 | 1707050 |
| 4U SPINAL PEDICLE POSTERIOR POLYAXIAL CANNULATED-CEMENT SCREW Ø:7.0 L55mm | 7.0X55 | 1707055 |
| 4U SPINAL PEDICLE POSTERIOR POLYAXIAL CANNULATED-CEMENT SCREW Ø:7.5 L30mm | 7.5X30 | 1707530 |
| 4U SPINAL PEDICLE POSTERIOR POLYAXIAL CANNULATED-CEMENT SCREW Ø:7.5 L35mm | 7.5X35 | 1707535 |
| 4U SPINAL PEDICLE POSTERIOR POLYAXIAL CANNULATED-CEMENT SCREW Ø:7.5 L40mm | 7.5X40 | 1707540 |
| 4U SPINAL PEDICLE POSTERIOR POLYAXIAL CANNULATED-CEMENT SCREW Ø:7.5 L45mm | 7.5X45 | 1707545 |
| 4U SPINAL PEDICLE POSTERIOR POLYAXIAL CANNULATED-CEMENT SCREW Ø:7.5 L50mm | 7.5X50 | 1707550 |
| 4U SPINAL PEDICLE POSTERIOR POLYAXIAL CANNULATED-CEMENT SCREW Ø:7.5 L55mm | 7.5X55 | 1707555 |
| 4U SPINAL PEDICLE POSTERIOR POLYAXIAL CANNULATED-CEMENT SCREW Ø:8.0 L30mm | 8.0X30 | SPECIAL PRODUCTION |
| 4U SPINAL PEDICLE POSTERIOR POLYAXIAL CANNULATED-CEMENT SCREW Ø:8.0 L35mm | 8.0X35 | 1708035 |
| 4U SPINAL PEDICLE POSTERIOR POLYAXIAL CANNULATED-CEMENT SCREW Ø:8.0 L40mm | 8.0X40 | 1708040 |
| 4U SPINAL PEDICLE POSTERIOR POLYAXIAL CANNULATED-CEMENT SCREW Ø:8.0 L45mm | 8.0X45 | 1708045 |
| 4U SPINAL PEDICLE POSTERIOR POLYAXIAL CANNULATED-CEMENT SCREW Ø:8.0 L50mm | 8.0X50 | 1708050 |
| 4U SPINAL PEDICLE POSTERIOR POLYAXIAL CANNULATED-CEMENT SCREW Ø:8.0 L55mm | 8.0X55 | 1708055 |

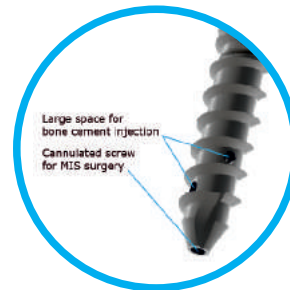
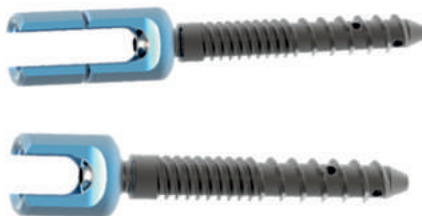
SPINAL PEDICLE POSTERIOR POLYAXIAL CANNULATED SCREW



4U Medikal Spinal Pediküler Posterior Çok Açılı Kanüllü Vida

4U SPINAL SYSTEM

| AÇIKLAMA / Description | ÖLÇÜ / Size | KOD / Code |
|--|-------------|--------------------|
| 4U SPINAL PEDICLE POSTERIOR POLYAXIAL CANNULATED SCREW Ø:4.5 L30mm | 4.5X30 | SPECIAL PRODUCTION |
| 4U SPINAL PEDICLE POSTERIOR POLYAXIAL CANNULATED SCREW Ø:4.5 L35mm | 4.5X35 | SPECIAL PRODUCTION |
| 4U SPINAL PEDICLE POSTERIOR POLYAXIAL CANNULATED SCREW Ø:4.5 L40mm | 4.5X40 | SPECIAL PRODUCTION |
| 4U SPINAL PEDICLE POSTERIOR POLYAXIAL CANNULATED SCREW Ø:4.5 L45mm | 4.5X45 | SPECIAL PRODUCTION |
| 4U SPINAL PEDICLE POSTERIOR POLYAXIAL CANNULATED SCREW Ø:4.5 L50mm | 4.5X50 | SPECIAL PRODUCTION |
| 4U SPINAL PEDICLE POSTERIOR POLYAXIAL CANNULATED SCREW Ø:4.5 L55mm | 4.5X55 | SPECIAL PRODUCTION |
| 4U SPINAL PEDICLE POSTERIOR POLYAXIAL CANNULATED SCREW Ø:5.0 L30mm | 5.0X30 | SPECIAL PRODUCTION |
| 4U SPINAL PEDICLE POSTERIOR POLYAXIAL CANNULATED SCREW Ø:5.0 L35mm | 5.0X35 | SPECIAL PRODUCTION |
| 4U SPINAL PEDICLE POSTERIOR POLYAXIAL CANNULATED SCREW Ø:5.0 L40mm | 5.0X40 | SPECIAL PRODUCTION |
| 4U SPINAL PEDICLE POSTERIOR POLYAXIAL CANNULATED SCREW Ø:5.0 L45mm | 5.0X45 | SPECIAL PRODUCTION |
| 4U SPINAL PEDICLE POSTERIOR POLYAXIAL CANNULATED SCREW Ø:5.0 L50mm | 5.0X50 | SPECIAL PRODUCTION |
| 4U SPINAL PEDICLE POSTERIOR POLYAXIAL CANNULATED SCREW Ø:5.0 L55mm | 5.0X55 | SPECIAL PRODUCTION |
| 4U SPINAL PEDICLE POSTERIOR POLYAXIAL CANNULATED SCREW Ø:5.5 L30mm | 5.5X30 | 1605530 |
| 4U SPINAL PEDICLE POSTERIOR POLYAXIAL CANNULATED SCREW Ø:5.5 L35mm | 5.5X35 | 1605535 |
| 4U SPINAL PEDICLE POSTERIOR POLYAXIAL CANNULATED SCREW Ø:5.5 L40mm | 5.5X40 | 1605540 |
| 4U SPINAL PEDICLE POSTERIOR POLYAXIAL CANNULATED SCREW Ø:5.5 L45mm | 5.5X45 | 1605545 |
| 4U SPINAL PEDICLE POSTERIOR POLYAXIAL CANNULATED SCREW Ø:5.5 L50mm | 5.5X50 | 1605550 |
| 4U SPINAL PEDICLE POSTERIOR POLYAXIAL CANNULATED SCREW Ø:5.5 L55mm | 5.5X55 | 1605555 |
| 4U SPINAL PEDICLE POSTERIOR POLYAXIAL CANNULATED SCREW Ø:6.0 L30mm | 6.0X30 | SPECIAL PRODUCTION |
| 4U SPINAL PEDICLE POSTERIOR POLYAXIAL CANNULATED SCREW Ø:6.0 L35mm | 6.0X35 | SPECIAL PRODUCTION |
| 4U SPINAL PEDICLE POSTERIOR POLYAXIAL CANNULATED SCREW Ø:6.0 L40mm | 6.0X40 | SPECIAL PRODUCTION |
| 4U SPINAL PEDICLE POSTERIOR POLYAXIAL CANNULATED SCREW Ø:6.0 L45mm | 6.0X45 | SPECIAL PRODUCTION |
| 4U SPINAL PEDICLE POSTERIOR POLYAXIAL CANNULATED SCREW Ø:6.0 L50mm | 6.0X50 | SPECIAL PRODUCTION |
| 4U SPINAL PEDICLE POSTERIOR POLYAXIAL CANNULATED SCREW Ø:6.0 L55mm | 6.0X55 | SPECIAL PRODUCTION |
| 4U SPINAL PEDICLE POSTERIOR POLYAXIAL CANNULATED SCREW Ø:6.5 L30mm | 6.5X30 | 1606530 |
| 4U SPINAL PEDICLE POSTERIOR POLYAXIAL CANNULATED SCREW Ø:6.5 L35mm | 6.5X35 | 1606535 |
| 4U SPINAL PEDICLE POSTERIOR POLYAXIAL CANNULATED SCREW Ø:6.5 L40mm | 6.5X40 | 1606540 |
| 4U SPINAL PEDICLE POSTERIOR POLYAXIAL CANNULATED SCREW Ø:6.5 L45mm | 6.5X45 | 1606545 |
| 4U SPINAL PEDICLE POSTERIOR POLYAXIAL CANNULATED SCREW Ø:6.5 L50mm | 6.5X50 | 1606550 |
| 4U SPINAL PEDICLE POSTERIOR POLYAXIAL CANNULATED SCREW Ø:6.5 L55mm | 6.5X55 | 1606555 |
| 4U SPINAL PEDICLE POSTERIOR POLYAXIAL CANNULATED SCREW Ø:7.0 L30mm | 7.0X30 | 1607030 |
| 4U SPINAL PEDICLE POSTERIOR POLYAXIAL CANNULATED SCREW Ø:7.0 L35mm | 7.0X35 | SPECIAL PRODUCTION |
| 4U SPINAL PEDICLE POSTERIOR POLYAXIAL CANNULATED SCREW Ø:7.0 L40mm | 7.0X40 | SPECIAL PRODUCTION |
| 4U SPINAL PEDICLE POSTERIOR POLYAXIAL CANNULATED SCREW Ø:7.0 L45mm | 7.0X45 | SPECIAL PRODUCTION |
| 4U SPINAL PEDICLE POSTERIOR POLYAXIAL CANNULATED SCREW Ø:7.0 L50mm | 7.0X50 | SPECIAL PRODUCTION |
| 4U SPINAL PEDICLE POSTERIOR POLYAXIAL CANNULATED SCREW Ø:7.0 L55mm | 7.0X55 | SPECIAL PRODUCTION |
| 4U SPINAL PEDICLE POSTERIOR POLYAXIAL CANNULATED SCREW Ø:7.5 L30mm | 7.5X30 | 1607530 |
| 4U SPINAL PEDICLE POSTERIOR POLYAXIAL CANNULATED SCREW Ø:7.5 L35mm | 7.5X35 | 1607535 |
| 4U SPINAL PEDICLE POSTERIOR POLYAXIAL CANNULATED SCREW Ø:7.5 L40mm | 7.5X40 | 1607540 |
| 4U SPINAL PEDICLE POSTERIOR POLYAXIAL CANNULATED SCREW Ø:7.5 L45mm | 7.5X45 | 1607545 |
| 4U SPINAL PEDICLE POSTERIOR POLYAXIAL CANNULATED SCREW Ø:7.5 L50mm | 7.5X50 | 1607550 |
| 4U SPINAL PEDICLE POSTERIOR POLYAXIAL CANNULATED SCREW Ø:7.5 L55mm | 7.5X55 | 1607555 |
| 4U SPINAL PEDICLE POSTERIOR POLYAXIAL CANNULATED SCREW Ø:8.0 L30mm | 8.0X30 | SPECIAL PRODUCTION |
| 4U SPINAL PEDICLE POSTERIOR POLYAXIAL CANNULATED SCREW Ø:8.0 L35mm | 8.0X35 | SPECIAL PRODUCTION |
| 4U SPINAL PEDICLE POSTERIOR POLYAXIAL CANNULATED SCREW Ø:8.0 L40mm | 8.0X40 | SPECIAL PRODUCTION |
| 4U SPINAL PEDICLE POSTERIOR POLYAXIAL CANNULATED SCREW Ø:8.0 L45mm | 8.0X45 | SPECIAL PRODUCTION |
| 4U SPINAL PEDICLE POSTERIOR POLYAXIAL CANNULATED SCREW Ø:8.0 L50mm | 8.0X50 | SPECIAL PRODUCTION |
| 4U SPINAL PEDICLE POSTERIOR POLYAXIAL CANNULATED SCREW Ø:8.0 L55mm | 8.0X55 | SPECIAL PRODUCTION |



SPINAL PEDICLE POSTERIOR LONG ARM POLYAXIAL CANNULATED SCREW



4U Medikal Pediküler Posterior Çok Açılı Kanüllü Vida

| AÇIKLAMA / Description | ÖLÇÜ / Size | KOD / Code |
|---|-------------|--------------------|
| 4U SPINAL PEDICLE POSTERIOR LONG ARM POLYAXIAL CANNULATED SCREW Ø:5.5 L30mm | 5.5X30 | SPECIAL PRÖDUCTION |
| 4U SPINAL PEDICLE POSTERIOR LONG ARM POLYAXIAL CANNULATED SCREW Ø:5.5 L35mm | 5.5X35 | SPECIAL PRODUCTION |
| 4U SPINAL PEDICLE POSTERIOR LONG ARM POLYAXIAL CANNULATED SCREW Ø:5.5 L40mm | 5.5X40 | SPECIAL PRODUCTION |
| 4U SPINAL PEDICLE POSTERIOR LONG ARM POLYAXIAL CANNULATED SCREW Ø:5.5 L45mm | 5.5X45 | SPECIAL PRODUCTION |
| 4U SPINAL PEDICLE POSTERIOR LONG ARM POLYAXIAL CANNULATED SCREW Ø:5.5 L50mm | 5.5X50 | SPECIAL PRODUCTION |
| 4U SPINAL PEDICLE POSTERIOR LONG ARM POLYAXIAL CANNULATED SCREW Ø:5.5 L55mm | 5.5X55 | SPECIAL PRODUCTION |
| 4U SPINAL PEDICLE POSTERIOR LONG ARM POLYAXIAL CANNULATED SCREW Ø:6.0 L30mm | 6.0X30 | SPECIAL PRODUCTION |
| 4U SPINAL PEDICLE POSTERIOR LONG ARM POLYAXIAL CANNULATED SCREW Ø:6.0 L35mm | 6.0X35 | SPECIAL PRODUCTION |
| 4U SPINAL PEDICLE POSTERIOR LONG ARM POLYAXIAL CANNULATED SCREW Ø:6.0 L40mm | 6.0X40 | SPECIAL PRODUCTION |
| 4U SPINAL PEDICLE POSTERIOR LONG ARM POLYAXIAL CANNULATED SCREW Ø:6.0 L45mm | 6.0X45 | SPECIAL PRODUCTION |
| 4U SPINAL PEDICLE POSTERIOR LONG ARM POLYAXIAL CANNULATED SCREW Ø:6.0 L50mm | 6.0X50 | SPECIAL PRODUCTION |
| 4U SPINAL PEDICLE POSTERIOR LONG ARM POLYAXIAL CANNULATED SCREW Ø:6.0 L55mm | 6.0X55 | SPECIAL PRODUCTION |
| 4U SPINAL PEDICLE POSTERIOR LONG ARM POLYAXIAL CANNULATED SCREW Ø:6.5 L30mm | 6.5X30 | SPECIAL PRODUCTION |
| 4U SPINAL PEDICLE POSTERIOR LONG ARM POLYAXIAL CANNULATED SCREW Ø:6.5 L35mm | 6.5X35 | SPECIAL PRODUCTION |
| 4U SPINAL PEDICLE POSTERIOR LONG ARM POLYAXIAL CANNULATED SCREW Ø:6.5 L40mm | 6.5X40 | SPECIAL PRODUCTION |
| 4U SPINAL PEDICLE POSTERIOR LONG ARM POLYAXIAL CANNULATED SCREW Ø:6.5 L45mm | 6.5X45 | SPECIAL PRODUCTION |
| 4U SPINAL PEDICLE POSTERIOR LONG ARM POLYAXIAL CANNULATED SCREW Ø:6.5 L50mm | 6.5X50 | SPECIAL PRODUCTION |
| 4U SPINAL PEDICLE POSTERIOR LONG ARM POLYAXIAL CANNULATED SCREW Ø:6.5 L55mm | 6.5X55 | SPECIAL PRODUCTION |
| 4U SPINAL PEDICLE POSTERIOR LONG ARM POLYAXIAL CANNULATED SCREW Ø:7.0 L30mm | 7.0X30 | SPECIAL PRODUCTION |
| 4U SPINAL PEDICLE POSTERIOR LONG ARM POLYAXIAL CANNULATED SCREW Ø:7.0 L35mm | 7.0X35 | SPECIAL PRODUCTION |
| 4U SPINAL PEDICLE POSTERIOR LONG ARM POLYAXIAL CANNULATED SCREW Ø:7.0 L40mm | 7.0X40 | SPECIAL PRODUCTION |
| 4U SPINAL PEDICLE POSTERIOR LONG ARM POLYAXIAL CANNULATED SCREW Ø:7.0 L45mm | 7.0X45 | SPECIAL PRODUCTION |
| 4U SPINAL PEDICLE POSTERIOR LONG ARM POLYAXIAL CANNULATED SCREW Ø:7.0 L50mm | 7.0X50 | SPECIAL PRODUCTION |
| 4U SPINAL PEDICLE POSTERIOR LONG ARM POLYAXIAL CANNULATED SCREW Ø:7.0 L55mm | 7.0X55 | SPECIAL PRODUCTION |
| 4U SPINAL PEDICLE POSTERIOR LONG ARM POLYAXIAL CANNULATED SCREW Ø:7.5 L30mm | 7.5X30 | SPECIAL PRODUCTION |
| 4U SPINAL PEDICLE POSTERIOR LONG ARM POLYAXIAL CANNULATED SCREW Ø:7.5 L35mm | 7.5X35 | SPECIAL PRODUCTION |
| 4U SPINAL PEDICLE POSTERIOR LONG ARM POLYAXIAL CANNULATED SCREW Ø:7.5 L40mm | 7.5X40 | SPECIAL PRODUCTION |
| 4U SPINAL PEDICLE POSTERIOR LONG ARM POLYAXIAL CANNULATED SCREW Ø:7.5 L45mm | 7.5X45 | SPECIAL PRODUCTION |
| 4U SPINAL PEDICLE POSTERIOR LONG ARM POLYAXIAL CANNULATED SCREW Ø:7.5 L50mm | 7.5X50 | SPECIAL PRODUCTION |
| 4U SPINAL PEDICLE POSTERIOR LONG ARM POLYAXIAL CANNULATED SCREW Ø:7.5 L55mm | 7.5X55 | SPECIAL PRODUCTION |
| 4U SPINAL PEDICLE POSTERIOR LONG ARM POLYAXIAL CANNULATED SCREW Ø:8.0 L30mm | 8.0X30 | SPECIAL PRODUCTION |
| 4U SPINAL PEDICLE POSTERIOR LONG ARM POLYAXIAL CANNULATED SCREW Ø:8.0 L35mm | 8.0X35 | SPECIAL PRODUCTION |
| 4U SPINAL PEDICLE POSTERIOR LONG ARM POLYAXIAL CANNULATED SCREW Ø:8.0 L40mm | 8.0X40 | SPECIAL PRODUCTION |
| 4U SPINAL PEDICLE POSTERIOR LONG ARM POLYAXIAL CANNULATED SCREW Ø:8.0 L45mm | 8.0X45 | SPECIAL PRÖDUCTION |
| 4U SPINAL PEDICLE POSTERIOR LONG ARM POLYAXIAL CANNULATED SCREW Ø:8.0 L50mm | 8.0X50 | SPECIAL PRODUCTION |
| 4U SPINAL PEDICLE POSTERIOR LONG ARM POLYAXIAL CANNULATED SCREW Ø:8.0 L55mm | 8.0X55 | SPECIAL PRÖDUCTION |



SPINAL PEDICLE POSTERIOR MONOAXIAL SCREW

CE

4U Medikal Spinal Pediküler Posterior Tek Açılı Vida

| AÇIKLAMA / Description | ÖLÇÜ / Size | KOD / Code |
|---|-------------|--------------------|
| 4U SPINAL PEDICLE POSTERIOR MONOAXIAL SCREW Ø:3.5 L25mm | 3.5X25 | 1303525 |
| 4U SPINAL PEDICLE POSTERIOR MONOAXIAL SCREW Ø:3.5 L30mm | 3.5X30 | 1303530 |
| 4U SPINAL PEDICLE POSTERIOR MONOAXIAL SCREW Ø:3.5 L35mm | 3.5X35 | 1303535 |
| 4U SPINAL PEDICLE POSTERIOR MONOAXIAL SCREW Ø:3.5 L40mm | 3.5X40 | 1303540 |
| 4U SPINAL PEDICLE POSTERIOR MONOAXIAL SCREW Ø:3.5 L45mm | 3.5X45 | 1303545 |
| 4U SPINAL PEDICLE POSTERIOR MONOAXIAL SCREW Ø:4.0 L25mm | 4.0X25 | 1304025 |
| 4U SPINAL PEDICLE POSTERIOR MONOAXIAL SCREW Ø:4.0 L30mm | 4.0X30 | 1304030 |
| 4U SPINAL PEDICLE POSTERIOR MONOAXIAL SCREW Ø:4.0 L35mm | 4.0X35 | 1304035 |
| 4U SPINAL PEDICLE POSTERIOR MONOAXIAL SCREW Ø:4.0 L40mm | 4.0X40 | 1304040 |
| 4U SPINAL PEDICLE POSTERIOR MONOAXIAL SCREW Ø:4.0 L45mm | 4.0X45 | 1304045 |
| 4U SPINAL PEDICLE POSTERIOR MONOAXIAL SCREW Ø:4.5 L25mm | 4.5X25 | 1304525 |
| 4U SPINAL PEDICLE POSTERIOR MONOAXIAL SCREW Ø:4.5 L30mm | 4.5X30 | 1304530 |
| 4U SPINAL PEDICLE POSTERIOR MONOAXIAL SCREW Ø:4.5 L35mm | 4.5X35 | 1304535 |
| 4U SPINAL PEDICLE POSTERIOR MONOAXIAL SCREW Ø:4.5 L40mm | 4.5X40 | 1304540 |
| 4U SPINAL PEDICLE POSTERIOR MONOAXIAL SCREW Ø:4.5 L45mm | 4.5X45 | 1304545 |
| 4U SPINAL PEDICLE POSTERIOR MONOAXIAL SCREW Ø:4.5 L50mm | 4.5X50 | SPECIAL PRODUCTION |
| 4U SPINAL PEDICLE POSTERIOR MONOAXIAL SCREW Ø:5.0 L30mm | 5.0X30 | 1305030 |
| 4U SPINAL PEDICLE POSTERIOR MONOAXIAL SCREW Ø:5.0 L35mm | 5.0X35 | 1305035 |
| 4U SPINAL PEDICLE POSTERIOR MONOAXIAL SCREW Ø:5.0 L40mm | 5.0X40 | 1305040 |
| 4U SPINAL PEDICLE POSTERIOR MONOAXIAL SCREW Ø:5.0 L45mm | 5.0X45 | 1305045 |
| 4U SPINAL PEDICLE POSTERIOR MONOAXIAL SCREW Ø:5.0 L50mm | 5.0X50 | 1305050 |
| 4U SPINAL PEDICLE POSTERIOR MONOAXIAL SCREW Ø:5.0 L55mm | 5.0X55 | SPECIAL PRODUCTION |



"Yenilikçi tasarımlar"
Innovative designs



| AÇIKLAMA / Description | ÖLÇÜ / Size | KOD / Code |
|---|-------------|--------------------|
| 4U SPINAL PEDICLE POSTERIOR MONOAXIAL SCREW Ø:5.5 L30mm | 5.5X30 | 1305530 |
| 4U SPINAL PEDICLE POSTERIOR MONOAXIAL SCREW Ø:5.5 L35mm | 5.5X35 | 1305535 |
| 4U SPINAL PEDICLE POSTERIOR MONOAXIAL SCREW Ø:5.5 L40mm | 5.5X40 | 1305540 |
| 4U SPINAL PEDICLE POSTERIOR MONOAXIAL SCREW Ø:5.5 L45mm | 5.5X45 | 1305545 |
| 4U SPINAL PEDICLE POSTERIOR MONOAXIAL SCREW Ø:5.5 L50mm | 5.5X50 | 1305550 |
| 4U SPINAL PEDICLE POSTERIOR MONOAXIAL SCREW Ø:5.5 L55mm | 5.5X55 | 1305555 |
| 4U SPINAL PEDICLE POSTERIOR MONOAXIAL SCREW Ø:6.0 L30mm | 6.0X30 | SPECIAL PRODUCTION |
| 4U SPINAL PEDICLE POSTERIOR MONOAXIAL SCREW Ø:6.0 L35mm | 6.0X35 | 1306035 |
| 4U SPINAL PEDICLE POSTERIOR MONOAXIAL SCREW Ø:6.0 L40mm | 6.0X40 | 1306040 |
| 4U SPINAL PEDICLE POSTERIOR MONOAXIAL SCREW Ø:6.0 L45mm | 6.0X45 | 1306045 |
| 4U SPINAL PEDICLE POSTERIOR MONOAXIAL SCREW Ø:6.0 L50mm | 6.0X50 | 1306050 |
| 4U SPINAL PEDICLE POSTERIOR MONOAXIAL SCREW Ø:6.0 L55mm | 6.0X55 | 1306055 |
| 4U SPINAL PEDICLE POSTERIOR MONOAXIAL SCREW Ø:6.5 L30mm | 6.5X30 | 1306530 |
| 4U SPINAL PEDICLE POSTERIOR MONOAXIAL SCREW Ø:6.5 L35mm | 6.5X35 | 1306535 |
| 4U SPINAL PEDICLE POSTERIOR MONOAXIAL SCREW Ø:6.5 L40mm | 6.5X40 | 1306540 |
| 4U SPINAL PEDICLE POSTERIOR MONOAXIAL SCREW Ø:6.5 L45mm | 6.5X45 | 1306545 |
| 4U SPINAL PEDICLE POSTERIOR MONOAXIAL SCREW Ø:6.5 L50mm | 6.5X50 | 1306550 |
| 4U SPINAL PEDICLE POSTERIOR MONOAXIAL SCREW Ø:6.5 L55mm | 6.5X55 | 1306555 |
| 4U SPINAL PEDICLE POSTERIOR MONOAXIAL SCREW Ø:7.0 L30mm | 7.0X30 | SPECIAL PRODUCTION |
| 4U SPINAL PEDICLE POSTERIOR MONOAXIAL SCREW Ø:7.0 L35mm | 7.0X35 | 1307035 |
| 4U SPINAL PEDICLE POSTERIOR MONOAXIAL SCREW Ø:7.0 L40mm | 7.0X40 | 1307040 |
| 4U SPINAL PEDICLE POSTERIOR MONOAXIAL SCREW Ø:7.0 L45mm | 7.0X45 | 1307045 |
| 4U SPINAL PEDICLE POSTERIOR MONOAXIAL SCREW Ø:7.0 L50mm | 7.0X50 | 1307050 |
| 4U SPINAL PEDICLE POSTERIOR MONOAXIAL SCREW Ø:7.0 L55mm | 7.0X55 | 1307055 |
| 4U SPINAL PEDICLE POSTERIOR MONOAXIAL SCREW Ø:7.5 L30mm | 7.5X30 | SPECIAL PRODUCTION |
| 4U SPINAL PEDICLE POSTERIOR MONOAXIAL SCREW Ø:7.5 L35mm | 7.5X35 | 1307535 |
| 4U SPINAL PEDICLE POSTERIOR MONOAXIAL SCREW Ø:7.5 L40mm | 7.5X40 | 1307540 |
| 4U SPINAL PEDICLE POSTERIOR MONOAXIAL SCREW Ø:7.5 L45mm | 7.5X45 | 1307545 |
| 4U SPINAL PEDICLE POSTERIOR MONOAXIAL SCREW Ø:7.5 L50mm | 7.5X50 | 1307550 |
| 4U SPINAL PEDICLE POSTERIOR MONOAXIAL SCREW Ø:7.5 L55mm | 7.5X55 | 1307555 |
| 4U SPINAL PEDICLE POSTERIOR MONOAXIAL SCREW Ø:8.0 L30mm | 8.0X30 | SPECIAL PRODUCTION |
| 4U SPINAL PEDICLE POSTERIOR MONOAXIAL SCREW Ø:8.0 L35mm | 8.0X35 | 1308035 |
| 4U SPINAL PEDICLE POSTERIOR MONOAXIAL SCREW Ø:8.0 L40mm | 8.0X40 | 1308040 |
| 4U SPINAL PEDICLE POSTERIOR MONOAXIAL SCREW Ø:8.0 L45mm | 8.0X45 | 1308045 |
| 4U SPINAL PEDICLE POSTERIOR MONOAXIAL SCREW Ø:8.0 L50mm | 8.0X50 | 1308050 |
| 4U SPINAL PEDICLE POSTERIOR MONOAXIAL SCREW Ø:8.0 L55mm | 8.0X55 | 1308055 |



SPINAL POSTERIOR MONOAXIAL SPONDYLOLISTHESIS SCREW



4U Medikal Spinal Posterior Tek Açılı Spondiloz Vida

| AÇIKLAMA / Description | ÖLÇÜ / Size | KOD / Code |
|---|-------------|--------------------|
| 4U SPINAL POSTERIOR MONOAXIAL SPONDYLOLISTHESIS SCREW Ø:5.5 L35mm | 5.5X35 | 1505535 |
| 4U SPINAL POSTERIOR MONOAXIAL SPONDYLOLISTHESIS SCREW Ø:5.5 L40mm | 5.5X40 | 1505540 |
| 4U SPINAL POSTERIOR MONOAXIAL SPONDYLOLISTHESIS SCREW Ø:5.5 L45mm | 5.5X45 | 1505545 |
| 4U SPINAL POSTERIOR MONOAXIAL SPONDYLOLISTHESIS SCREW Ø:5.5 L50mm | 5.5X50 | 1505550 |
| 4U SPINAL POSTERIOR MONOAXIAL SPONDYLOLISTHESIS SCREW Ø:5.5 L55mm | 5.5X55 | SPECIAL PRODUCTION |
| 4U SPINAL POSTERIOR MONOAXIAL SPONDYLOLISTHESIS SCREW Ø:6.0 L30mm | 6.0X30 | SPECIAL PRODUCTION |
| 4U SPINAL POSTERIOR MONOAXIAL SPONDYLOLISTHESIS SCREW Ø:6.0 L35mm | 6.0X35 | 1506035 |
| 4U SPINAL POSTERIOR MONOAXIAL SPONDYLOLISTHESIS SCREW Ø:6.0 L40mm | 6.0X40 | 1506040 |
| 4U SPINAL POSTERIOR MONOAXIAL SPONDYLOLISTHESIS SCREW Ø:6.0 L45mm | 6.0X45 | 1506045 |
| 4U SPINAL POSTERIOR MONOAXIAL SPONDYLOLISTHESIS SCREW Ø:6.0 L50mm | 6.0X50 | 1506050 |
| 4U SPINAL POSTERIOR MONOAXIAL SPONDYLOLISTHESIS SCREW Ø:6.0 L55mm | 6.0X55 | SPECIAL PRODUCTION |
| 4U SPINAL POSTERIOR MONOAXIAL SPONDYLOLISTHESIS SCREW Ø:6.5 L30mm | 6.5X30 | SPECIAL PRODUCTION |
| 4U SPINAL POSTERIOR MONOAXIAL SPONDYLOLISTHESIS SCREW Ø:6.5 L35mm | 6.5X35 | 1506535 |
| 4U SPINAL POSTERIOR MONOAXIAL SPONDYLOLISTHESIS SCREW Ø:6.5 L40mm | 6.5X40 | 1506540 |
| 4U SPINAL POSTERIOR MONOAXIAL SPONDYLOLISTHESIS SCREW Ø:6.5 L45mm | 6.5X45 | 1506545 |
| 4U SPINAL POSTERIOR MONOAXIAL SPONDYLOLISTHESIS SCREW Ø:6.5 L50mm | 6.5X50 | 1506550 |
| 4U SPINAL POSTERIOR MONOAXIAL SPONDYLOLISTHESIS SCREW Ø:6.5 L55mm | 6.5X55 | SPECIAL PRODUCTION |
| 4U SPINAL POSTERIOR MONOAXIAL SPONDYLOLISTHESIS SCREW Ø:7.0 L30mm | 7.0X30 | 1507030 |
| 4U SPINAL POSTERIOR MONOAXIAL SPONDYLOLISTHESIS SCREW Ø:7.0 L35mm | 7.0X35 | 1507035 |
| 4U SPINAL POSTERIOR MONOAXIAL SPONDYLOLISTHESIS SCREW Ø:7.0 L40mm | 7.0X40 | 1507040 |
| 4U SPINAL POSTERIOR MONOAXIAL SPONDYLOLISTHESIS SCREW Ø:7.0 L45mm | 7.0X45 | 1507045 |
| 4U SPINAL POSTERIOR MONOAXIAL SPONDYLOLISTHESIS SCREW Ø:7.0 L50mm | 7.0X50 | 1507050 |
| 4U SPINAL POSTERIOR MONOAXIAL SPONDYLOLISTHESIS SCREW Ø:7.0 L55mm | 7.0X55 | 1507055 |
| 4U SPINAL POSTERIOR MONOAXIAL SPONDYLOLISTHESIS SCREW Ø:7.5 L30mm | 7.5X30 | SPECIAL PRODUCTION |
| 4U SPINAL POSTERIOR MONOAXIAL SPONDYLOLISTHESIS SCREW Ø:7.5 L35mm | 7.5X35 | SPECIAL PRODUCTION |
| 4U SPINAL POSTERIOR MONOAXIAL SPONDYLOLISTHESIS SCREW Ø:7.5 L40mm | 7.5X40 | 1507540 |
| 4U SPINAL POSTERIOR MONOAXIAL SPONDYLOLISTHESIS SCREW Ø:7.5 L45mm | 7.5X45 | 1507545 |
| 4U SPINAL POSTERIOR MONOAXIAL SPONDYLOLISTHESIS SCREW Ø:7.5 L50mm | 7.5X50 | 1507550 |
| 4U SPINAL POSTERIOR MONOAXIAL SPONDYLOLISTHESIS SCREW Ø:7.5 L55mm | 7.5X55 | 1507555 |
| 4U SPINAL POSTERIOR MONOAXIAL SPONDYLOLISTHESIS SCREW Ø:8.0 L30mm | 8.0X30 | 1508030 |
| 4U SPINAL POSTERIOR MONOAXIAL SPONDYLOLISTHESIS SCREW Ø:8.0 L35mm | 8.0X35 | SPECIAL PRODUCTION |
| 4U SPINAL POSTERIOR MONOAXIAL SPONDYLOLISTHESIS SCREW Ø:8.0 L40mm | 8.0X40 | SPECIAL PRODUCTION |
| 4U SPINAL POSTERIOR MONOAXIAL SPONDYLOLISTHESIS SCREW Ø:8.0 L45mm | 8.0X45 | SPECIAL PRODUCTION |
| 4U SPINAL POSTERIOR MONOAXIAL SPONDYLOLISTHESIS SCREW Ø:8.0 L50mm | 8.0X50 | SPECIAL PRODUCTION |
| 4U SPINAL POSTERIOR MONOAXIAL SPONDYLOLISTHESIS SCREW Ø:8.0 L55mm | 8.0X55 | SPECIAL PRODUCTION |



POSTERIOR SPINAL POLYAXIAL SPONDYLOLISTHESIS SCREW



4U Medikal Spinal Posterior Çok Açılı Spondiloz Vidası

| AÇIKLAMA / Description | ÖLÇÜ / Size | KOD / Code |
|--|-------------|--------------------|
| 4U SPINAL POSTERIOR POLYAXIAL SPONDYLOLISTHESIS SCREW Ø:5.5 L:30mm | 5.5X30 | 1405530 |
| 4U SPINAL POSTERIOR POLYAXIAL SPONDYLOLISTHESIS SCREW Ø:5.5 L:35mm | 5.5X35 | 1405535 |
| 4U SPINAL POSTERIOR POLYAXIAL SPONDYLOLISTHESIS SCREW Ø:5.5 L:40mm | 5.5X40 | 1405540 |
| 4U SPINAL POSTERIOR POLYAXIAL SPONDYLOLISTHESIS SCREW Ø:5.5 L:45mm | 5.5X45 | 1405545 |
| 4U SPINAL POSTERIOR POLYAXIAL SPONDYLOLISTHESIS SCREW Ø:5.5 L:50mm | 5.5X50 | 1405550 |
| 4U SPINAL POSTERIOR POLYAXIAL SPONDYLOLISTHESIS SCREW Ø:5.5 L:55mm | 5.5X55 | 1405555 |
| 4U SPINAL POSTERIOR POLYAXIAL SPONDYLOLISTHESIS SCREW Ø:6.0 L:30mm | 6.0X30 | 1406030 |
| 4U SPINAL POSTERIOR POLYAXIAL SPONDYLOLISTHESIS SCREW Ø:6.0 L:35mm | 6.0X35 | 1406035 |
| 4U SPINAL POSTERIOR POLYAXIAL SPONDYLOLISTHESIS SCREW Ø:6.0 L:40mm | 6.0X40 | 1406040 |
| 4U SPINAL POSTERIOR POLYAXIAL SPONDYLOLISTHESIS SCREW Ø:6.0 L:45mm | 6.0X45 | 1406045 |
| 4U SPINAL POSTERIOR POLYAXIAL SPONDYLOLISTHESIS SCREW Ø:6.0 L:50mm | 6.0X50 | 1406050 |
| 4U SPINAL POSTERIOR POLYAXIAL SPONDYLOLISTHESIS SCREW Ø:6.0 L:55mm | 6.0X55 | 1406055 |
| 4U SPINAL POSTERIOR POLYAXIAL SPONDYLOLISTHESIS SCREW Ø:6.5 L:30mm | 6.5X30 | SPECIAL PRODUCTION |
| 4U SPINAL POSTERIOR POLYAXIAL SPONDYLOLISTHESIS SCREW Ø:6.5 L:35mm | 6.5X35 | 1406535 |
| 4U SPINAL POSTERIOR POLYAXIAL SPONDYLOLISTHESIS SCREW Ø:6.5 L:40mm | 6.5X40 | 1406540 |
| 4U SPINAL POSTERIOR POLYAXIAL SPONDYLOLISTHESIS SCREW Ø:6.5 L:45mm | 6.5X45 | 1406545 |
| 4U SPINAL POSTERIOR POLYAXIAL SPONDYLOLISTHESIS SCREW Ø:6.5 L:50mm | 6.5X50 | 1406550 |
| 4U SPINAL POSTERIOR POLYAXIAL SPONDYLOLISTHESIS SCREW Ø:6.5 L:55mm | 6.5X55 | SPECIAL PRODUCTION |
| 4U SPINAL POSTERIOR POLYAXIAL SPONDYLOLISTHESIS SCREW Ø:7.0 L:30mm | 7.0X30 | SPECIAL PRODUCTION |
| 4U SPINAL POSTERIOR POLYAXIAL SPONDYLOLISTHESIS SCREW Ø:7.0 L:35mm | 7.0X35 | 1407035 |
| 4U SPINAL POSTERIOR POLYAXIAL SPONDYLOLISTHESIS SCREW Ø:7.0 L:40mm | 7.0X40 | 1407040 |
| 4U SPINAL POSTERIOR POLYAXIAL SPONDYLOLISTHESIS SCREW Ø:7.0 L:45mm | 7.0X45 | 1407045 |
| 4U SPINAL POSTERIOR POLYAXIAL SPONDYLOLISTHESIS SCREW Ø:7.0 L:50mm | 7.0X50 | 1407050 |
| 4U SPINAL POSTERIOR POLYAXIAL SPONDYLOLISTHESIS SCREW Ø:7.0 L:55mm | 7.0X55 | 1407055 |
| 4U SPINAL POSTERIOR POLYAXIAL SPONDYLOLISTHESIS SCREW Ø:7.5 L:30mm | 7.5X30 | SPECIAL PRODUCTION |
| 4U SPINAL POSTERIOR POLYAXIAL SPONDYLOLISTHESIS SCREW Ø:7.5 L:35mm | 7.5X35 | 1407535 |
| 4U SPINAL POSTERIOR POLYAXIAL SPONDYLOLISTHESIS SCREW Ø:7.5 L:40mm | 7.5X40 | 1407540 |
| 4U SPINAL POSTERIOR POLYAXIAL SPONDYLOLISTHESIS SCREW Ø:7.5 L:45mm | 7.5X45 | 1407545 |
| 4U SPINAL POSTERIOR POLYAXIAL SPONDYLOLISTHESIS SCREW Ø:7.5 L:50mm | 7.5X50 | 1407550 |
| 4U SPINAL POSTERIOR POLYAXIAL SPONDYLOLISTHESIS SCREW Ø:7.5 L:55mm | 7.5X55 | 1407555 |



SPINAL ROD

4U Medikal Spinal Çubuk



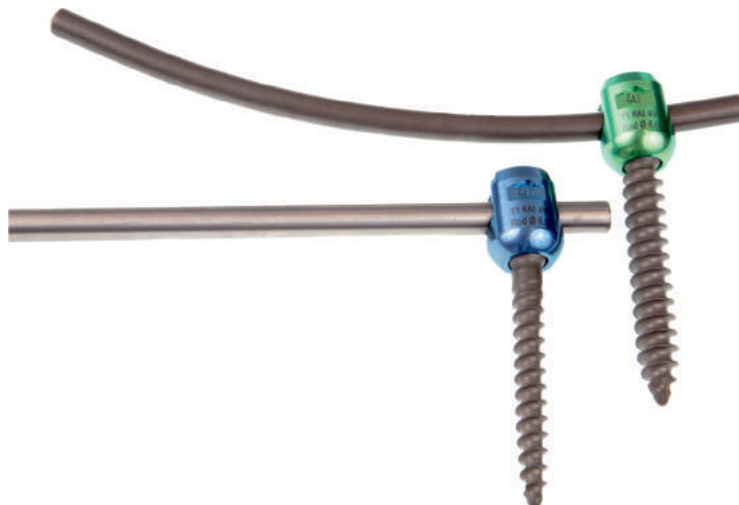
| AÇIKLAMA / Description | ÖLÇÜ / Size | KOD / Code |
|-----------------------------|-------------|--------------------|
| 4U SPINAL ROD Ø:6.0 L:40mm | 6.0X40 | 2200640 |
| 4U SPINAL ROD Ø:6.0 L:50mm | 6.0X50 | 2200650 |
| 4U SPINAL ROD Ø:6.0 L:60mm | 6.0X60 | 2200660 |
| 4U SPINAL ROD Ø:6.0 L:70mm | 6.0X70 | 2200670 |
| 4U SPINAL ROD Ø:6.0 L:80mm | 6.0X80 | 2200680 |
| 4U SPINAL ROD Ø:6.0 L:90mm | 6.0X90 | 2200690 |
| 4U SPINAL ROD Ø:6.0 L:100mm | 6.0X100 | 2206100 |
| 4U SPINAL ROD Ø:6.0 L:110mm | 6.0X110 | 2206110 |
| 4U SPINAL ROD Ø:6.0 L:120mm | 6.0X120 | 2206120 |
| 4U SPINAL ROD Ø:6.0 L:130mm | 6.0X130 | 2206130 |
| 4U SPINAL ROD Ø:6.0 L:140mm | 6.0X140 | 2206140 |
| 4U SPINAL ROD Ø:6.0 L:150mm | 6.0X150 | 2206150 |
| 4U SPINAL ROD Ø:6.0 L:160mm | 6.0X160 | 2206160 |
| 4U SPINAL ROD Ø:6.0 L:170mm | 6.0X170 | 2206170 |
| 4U SPINAL ROD Ø:6.0 L:180mm | 6.0X180 | 2206180 |
| 4U SPINAL ROD Ø:6.0 L:190mm | 6.0X190 | 2206190 |
| 4U SPINAL ROD Ø:6.0 L:200mm | 6.0X200 | 2206200 |
| 4U SPINAL ROD Ø:6.0 L:210mm | 6.0X210 | 2206210 |
| 4U SPINAL ROD Ø:6.0 L:220mm | 6.0X220 | 2206220 |
| 4U SPINAL ROD Ø:6.0 L:230mm | 6.0X230 | 2206230 |
| 4U SPINAL ROD Ø:6.0 L:240mm | 6.0X240 | 2206240 |
| 4U SPINAL ROD Ø:6.0 L:250mm | 6.0X250 | 2206250 |
| 4U SPINAL ROD Ø:6.0 L:260mm | 6.0X260 | 2206260 |
| 4U SPINAL ROD Ø:6.0 L:270mm | 6.0X270 | 2206270 |
| 4U SPINAL ROD Ø:6.0 L:280mm | 6.0X280 | 2206280 |
| 4U SPINAL ROD Ø:6.0 L:290mm | 6.0X290 | 2206290 |
| 4U SPINAL ROD Ø:6.0 L:300mm | 6.0X300 | 2206300 |
| 4U SPINAL ROD Ø:6.0 L:320mm | 6.0X320 | SPECIAL PRODUCTION |
| 4U SPINAL ROD Ø:6.0 L:340mm | 6.0X340 | SPECIAL PRODUCTION |
| 4U SPINAL ROD Ø:6.0 L:360mm | 6.0X360 | SPECIAL PRODUCTION |
| 4U SPINAL ROD Ø:6.0 L:380mm | 6.0X380 | SPECIAL PRODUCTION |
| 4U SPINAL ROD Ø:6.0 L:400mm | 6.0X400 | 2206400 |
| 4U SPINAL ROD Ø:6.0 L:420mm | 6.0X420 | SPECIAL PRODUCTION |
| 4U SPINAL ROD Ø:6.0 L:440mm | 6.0X440 | SPECIAL PRODUCTION |
| 4U SPINAL ROD Ø:6.0 L:460mm | 6.0X460 | SPECIAL PRODUCTION |
| 4U SPINAL ROD Ø:6.0 L:480mm | 6.0X480 | SPECIAL PRODUCTION |
| 4U SPINAL ROD Ø:6.0 L:500mm | 6.0X500 | 2206500 |
| 4U SPINAL ROD Ø:6.0 L:600mm | 6.0X600 | 2206600 |



"Yenilikçi tasarımlar"
Innovative designs



| AÇIKLAMA / Description | ÖLÇÜ / Size | KOD / Code |
|-----------------------------|-------------|--------------------|
| 4U SPINAL ROD Ø:5.5 L:40mm | 5.5X40 | 2300540 |
| 4U SPINAL ROD Ø:5.5 L:50mm | 5.5X50 | SPECIAL PRODUCTION |
| 4U SPINAL ROD Ø:5.5 L:60mm | 5.5X60 | SPECIAL PRODUCTION |
| 4U SPINAL ROD Ø:5.5 L:70mm | 5.5X70 | SPECIAL PRODUCTION |
| 4U SPINAL ROD Ø:5.5 L:80mm | 5.5X80 | 2300580 |
| 4U SPINAL ROD Ø:5.5 L:90mm | 5.5X90 | 2300590 |
| 4U SPINAL ROD Ø:5.5 L:100mm | 5.5X100 | 2305100 |
| 4U SPINAL ROD Ø:5.5 L:110mm | 5.5X110 | 2305230 |
| 4U SPINAL ROD Ø:5.5 L:120mm | 5.5X120 | 2305120 |
| 4U SPINAL ROD Ø:5.5 L:130mm | 5.5X130 | 2305130 |
| 4U SPINAL ROD Ø:5.5 L:140mm | 5.5X140 | SPECIAL PRODUCTION |
| 4U SPINAL ROD Ø:5.5 L:150mm | 5.5X150 | SPECIAL PRODUCTION |
| 4U SPINAL ROD Ø:5.5 L:160mm | 5.5X160 | SPECIAL PRODUCTION |
| 4U SPINAL ROD Ø:5.5 L:170mm | 5.5X170 | SPECIAL PRODUCTION |
| 4U SPINAL ROD Ø:5.5 L:180mm | 5.5X180 | 2305180 |
| 4U SPINAL ROD Ø:5.5 L:190mm | 5.5X190 | 2305190 |
| 4U SPINAL ROD Ø:5.5 L:200mm | 5.5X200 | 2305200 |
| 4U SPINAL ROD Ø:5.5 L:210mm | 5.5X210 | 2305210 |
| 4U SPINAL ROD Ø:5.5 L:220mm | 5.5X220 | 2305220 |
| 4U SPINAL ROD Ø:5.5 L:230mm | 5.5X230 | 2305230 |
| 4U SPINAL ROD Ø:5.5 L:240mm | 5.5X240 | 2305240 |
| 4U SPINAL ROD Ø:5.5 L:250mm | 5.5X250 | 2305250 |
| 4U SPINAL ROD Ø:5.5 L:260mm | 5.5X260 | 2305260 |
| 4U SPINAL ROD Ø:5.5 L:270mm | 5.5X270 | 2305270 |
| 4U SPINAL ROD Ø:5.5 L:280mm | 5.5X280 | 2305280 |
| 4U SPINAL ROD Ø:5.5 L:290mm | 5.5X290 | 2305290 |
| 4U SPINAL ROD Ø:5.5 L:300mm | 5.5X300 | 2305300 |
| 4U SPINAL ROD Ø:5.5 L:320mm | 5.5X320 | 2305320 |
| 4U SPINAL ROD Ø:5.5 L:340mm | 5.5X340 | SPECIAL PRODUCTION |
| 4U SPINAL ROD Ø:5.5 L:360mm | 5.5X360 | SPECIAL PRODUCTION |
| 4U SPINAL ROD Ø:5.5 L:380mm | 5.5X380 | 2305380 |
| 4U SPINAL ROD Ø:5.5 L:400mm | 5.5X400 | 2305400 |
| 4U SPINAL ROD Ø:5.5 L:420mm | 5.5X420 | 2305420 |
| 4U SPINAL ROD Ø:5.5 L:440mm | 5.5X440 | 2305440 |
| 4U SPINAL ROD Ø:5.5 L:460mm | 5.5X460 | 2305460 |
| 4U SPINAL ROD Ø:5.5 L:480mm | 5.5X480 | 2305480 |
| 4U SPINAL ROD Ø:5.5 L:500mm | 5.5X500 | SPECIAL PRODUCTION |
| 4U SPINAL ROD Ø:5.5 L:600mm | 5.5X600 | SPECIAL PRODUCTION |



HIGH FLEX ROD

4U Medikal Yüksek Esnek Çubuk



| AÇIKLAMA / Description | ÖLÇÜ / Size | KOD / Code |
|--------------------------------------|-------------|------------|
| 4U SPINAL HIGH FLEX ROD Ø 6.0x35 mm | 6.0X35 | 2100635 |
| 4U SPINAL HIGH FLEX ROD Ø 6.0x40 mm | 6.0X40 | 2100640 |
| 4U SPINAL HIGH FLEX ROD Ø 6.0x45 mm | 6.0X45 | 2100645 |
| 4U SPINAL HIGH FLEX ROD Ø 6.0x50 mm | 6.0X50 | 2100650 |
| 4U SPINAL HIGH FLEX ROD Ø 6.0x55 mm | 6.0X55 | 2100660 |
| 4U SPINAL HIGH FLEX ROD Ø 6.0x60 mm | 6.0X60 | 2100660 |
| 4U SPINAL HIGH FLEX ROD Ø 6.0x65 mm | 6.0X65 | 2100665 |
| 4U SPINAL HIGH FLEX ROD Ø 6.0x70 mm | 6.0X70 | 2100670 |
| 4U SPINAL HIGH FLEX ROD Ø 6.0x80 mm | 6.0X80 | 2100680 |
| 4U SPINAL HIGH FLEX ROD Ø 6.0x90 mm | 6.0X90 | 2100690 |
| 4U SPINAL HIGH FLEX ROD Ø 6.0x100 mm | 6.0X100 | 2106100 |
| 4U SPINAL HIGH FLEX ROD Ø 6.0x110 mm | 6.0X110 | 2106110 |
| 4U SPINAL HIGH FLEX ROD Ø 6.0x120 mm | 6.0X120 | 2106120 |
| 4U SPINAL HIGH FLEX ROD Ø 6.0x130 mm | 6.0X130 | 2106130 |
| 4U SPINAL HIGH FLEX ROD Ø 6.0x140 mm | 6.0X140 | 2106140 |
| 4U SPINAL HIGH FLEX ROD Ø 6.0x150 mm | 6.0X150 | 2106150 |
| 4U SPINAL HIGH FLEX ROD Ø 6.0x160 mm | 6.0X160 | 2106160 |
| 4U SPINAL HIGH FLEX ROD Ø 6.0x180 mm | 6.0X180 | 2106180 |
| 4U SPINAL HIGH FLEX ROD Ø 6.0x200 mm | 6.0X200 | 2106200 |

4U Medikal Spinal Fiksasyon Rod & Transverse Link System
4U Medical Spinal Fixation Rod & Transverse Link System

SPINAL FIXATION ROD & TRANSVERSE LINK SYSTEM

Set içerisindeki transvers konnektörler, uzayıp kısalabilen, sabit ve hareketli transver bağlantılarının 4 farklı boyu bulunmaktadır. Mono ve multiaxial konnektör modelleri pedikül vidalarla etkin bir fiksasyonu sağlayan uyuma sahiptir.

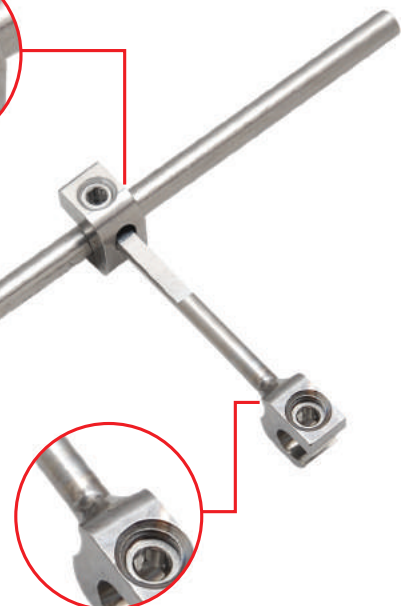
Standart 6.0 mm çaplı rodlarla birlikte 5.5 mm çaplı ve pediatrik vida sistemi için 5.0 mm çaplı rodlar mevcuttur. Ayrıca, sistem içerisinde uçları stoplu flat (düzleştirilmiş) rodlar vardır.

Transverse connectors are in the set, they can lengthen and shorten characteristic as in 4 different sizes. Mono-and multiaxial pedicle screws connector models provide an effective fixation is a close match.

With a standard 6.0 mm diameter rods 5.5 mm in diameter and 5.0 mm diameter rods are available for pediatric screw system. Also, the system in the flat ends of the olive (flattened) are rods



**Kolay Uygulama
ve Kilitleme**
Easy Insertion
and Locking



Transverse Link System
Transverse Link System



SPINAL TRANSVERSE CONNECTOR

4U Medikal Transfer Bağlantı

| AÇIKLAMA / Description | ÖLÇÜ / Size | KOD / Code |
|--------------------------------------|-------------|------------|
| 4U SPINAL TRANSVERSE CONNECTOR 40 mm | 40 mm | 2500040 |
| 4U SPINAL TRANSVERSE CONNECTOR 50 mm | 50 mm | 2500050 |
| 4U SPINAL TRANSVERSE CONNECTOR 60 mm | 60 mm | 2500060 |
| 4U SPINAL TRANSVERSE CONNECTOR 70 mm | 70 mm | 2500070 |
| 4U SPINAL TRANSVERSE CONNECTOR 80 mm | 80 mm | 2500080 |



SPINAL MULTIAXIAL TRANSVERSE CONNECTOR

4U Medikal Çok Açılı Transfer Bağlantısı

| AÇIKLAMA / Description | ÖLÇÜ / Size | KOD / Code |
|---|-------------|------------|
| 4U SPINAL MULTIAXIAL TRANSVERSE CONNECTOR 35mm | 35 mm | 2600035 |
| 4U SPINAL MULTIAXIAL TRANSVERSE CONNECTOR 45 mm | 45 mm | 2600045 |
| 4U SPINAL MULTIAXIAL TRANSVERSE CONNECTOR 55 mm | 55 mm | 2600055 |



SPINAL INTERSPINOUS U DEVICES

4U Medikal İnterspinöz U Aracı

| AÇIKLAMA / Description | ÖLÇÜ / Size | KOD / Code |
|--------------------------------------|-------------|------------|
| 4U SPINAL INTERSPINOUS U DEVICE 8mm | 8 mm | 8800008 |
| 4U SPINAL INTERSPINOUS U DEVICE 10mm | 10 mm | 8800010 |
| 4U SPINAL INTERSPINOUS U DEVICE 12mm | 12 mm | 8800012 |
| 4U SPINAL INTERSPINOUS U DEVICE 14mm | 14 mm | 8800014 |
| 4U SPINAL INTERSPINOUS U DEVICE 16mm | 16 mm | 8800016 |

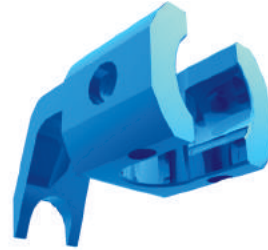
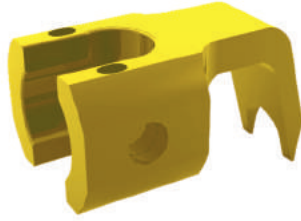


SPINAL CERVICAL PEDICULAR HOOK

CE

4U Medikal Servikal Pediküler Kanca

| AÇIKLAMA / Description | ÖLÇÜ / Size | KOD / Code |
|---|-------------|--------------------|
| 4U SPINAL CERVICAL PEDICULAR HOOK SMALL 4X4 | 4X4 | SPECIAL PRODUCTION |
| 4U SPINAL CERVICAL PEDICULAR HOOK SMALL 4X5 | 4X5 | SPECIAL PRODUCTION |
| 4U SPINAL CERVICAL PEDICULAR HOOK SMALL 4X6 | 4X6 | SPECIAL PRODUCTION |
| 4U SPINAL CERVICAL PEDICULAR HOOK SMALL 4X7 | 4X7 | SPECIAL PRODUCTION |



SPINAL PEDICULAR HOOK SMALL

CE

4U Medikal Pediküler Küçük Kanca

| AÇIKLAMA / Description | ÖLÇÜ / Size | KOD / Code |
|------------------------------------|-------------|------------|
| 4U SPINAL PEDICULAR HOOK SMALL 8X5 | 8X5 | 3000085 |
| 4U SPINAL PEDICULAR HOOK SMALL 8X7 | 8X7 | 3000087 |
| 4U SPINAL PEDICULAR HOOK SMALL 8X9 | 8X9 | 3000089 |



SPINAL PEDICULAR RIGHT/LEFT OFFSET HOOK

CE

4U Medikal Pediküler Sağ / Sol Kanca

| AÇIKLAMA / Description | ÖLÇÜ / Size | KOD / Code |
|---|-------------|------------|
| 4U SPINAL PEDICULAR RIGHT OFFSET HOOK 5X5 | 5X5 | 3100055 |
| 4U SPINAL PEDICULAR RIGHT OFFSET HOOK 5X7 | 5X7 | 3100057 |
| 4U SPINAL PEDICULAR LEFT OFFSET HOOK 5X5 | 5X5 | 3200055 |
| 4U SPINAL PEDICULAR LEFT OFFSET HOOK 5X7 | 5X7 | 3200057 |



SPINAL FIXATION LAMINAR HOOK

4U Medikal Spinal Sabitleme Laminar Kanca

CE

| AÇIKLAMA / Description | ÖLÇÜ / Size | KOD / Code |
|-----------------------------|-------------|------------|
| 4U SPINAL LAMINAR HOOK 5X5 | 5X5 | 3300055 |
| 4U SPINAL LAMINAR HOOK 5X7 | 5X7 | 3300057 |
| 4U SPINAL LAMINAR HOOK 5X9 | 5X9 | 3300059 |
| 4U SPINAL LAMINAR HOOK 7X6 | 7X6 | 3300076 |
| 4U SPINAL LAMINAR HOOK 7X7 | 7X7 | 3300077 |
| 4U SPINAL LAMINAR HOOK 7X9 | 7X9 | 3300079 |
| 4U SPINAL LAMINAR HOOK 7X11 | 7X11 | 3300711 |



SPINAL LAMINAR HOOK ANGLED

4U Medikal Spinal Laminar Açılı Kanca

CE

| AÇIKLAMA / Description | ÖLÇÜ / Size | KOD / Code |
|---|-------------|------------|
| 4U SPINAL LAMINAR HOOK 7X9, LEFT , ANGLED 20° | 7X9 | 3350079 |
| 4U SPINAL LAMINAR HOOK 7X11, LEFT , ANGLED 20° | 7X11 | 3350711 |
| 4U SPINAL LAMINAR HOOK 7X9, RIGHT , ANGLED 20° | 7X9 | 3450079 |
| 4U SPINAL LAMINAR HOOK 7X11, RIGHT , ANGLED 20° | 7X11 | 3450711 |

SPINAL LAMINAR RIGHT/LEFT OFFSET HOOK

4U Medikal Spinal Laminar Sağ / Sol Kanca

CE

| AÇIKLAMA / Description | ÖLÇÜ / Size | KOD / Code |
|---|-------------|------------|
| 4U SPINAL LAMINAR RIGHT OFFSET HOOK 5X5 | 5X5 | 3500055 |
| 4U SPINAL LAMINAR RIGHT OFFSET HOOK 5X7 | 5X7 | 3500057 |
| 4U SPINAL LAMINAR LEFT OFFSET HOOK 5X5 | 5X5 | 3600055 |
| 4U SPINAL LAMINAR LEFT OFFSET HOOK 5X7 | 5X7 | 3600057 |



SPINAL CONNECTOR

4U Medikal Spinal Bağlantı

CE

| AÇIKLAMA / Description | ÖLÇÜ / Size | KOD / Code |
|--------------------------------|-------------|------------|
| 4U SPINAL LATERAL CONNECTOR | 15 MM | 2700015 |
| 4U SPINAL LATERAL CONNECTOR | 20 MM | 2700020 |
| 4U SPINAL AXIAL CONNECTOR | 1 ROD | 2700030 |
| 4U SPINAL DOMINO CONNECTOR | 2 ROD | 2700040 |
| 4U SPINAL MULTIAXIAL CONNECTOR | 40-50 mm | 2700050 |
| | 50-60 mm | |

SPINAL ANTERIOR CERVICAL PLATES

4U Medikal Spinal Anterior Servikal Plak

CE

| AÇIKLAMA / Description | ÖLÇÜ / Size | KOD / Code |
|--|-------------|------------|
| 4U SPINAL ANTERIOR CERVICAL PLATE 17mm | 17 | 8000017 |
| 4U SPINAL ANTERIOR CERVICAL PLATE 21mm | 21 | |
| 4U SPINAL ANTERIOR CERVICAL PLATE 25mm | 25 | 8000025 |
| 4U SPINAL ANTERIOR CERVICAL PLATE 30mm | 30 | 8000030 |
| 4U SPINAL ANTERIOR CERVICAL PLATE 33mm | 33 | 8000033 |
| 4U SPINAL ANTERIOR CERVICAL PLATE 36mm | 36 | 8000036 |
| 4U SPINAL ANTERIOR CERVICAL PLATE 45mm | 45 | 8000045 |
| 4U SPINAL ANTERIOR CERVICAL PLATE 50mm | 50 | 8000050 |
| 4U SPINAL ANTERIOR CERVICAL PLATE 60mm | 60 | 8000060 |
| 4U SPINAL ANTERIOR CERVICAL PLATE 70mm | 70 | 8000070 |
| 4U SPINAL ANTERIOR CERVICAL PLATE 80mm | 80 | 8000080 |
| 4U SPINAL ANTERIOR CERVICAL PLATE 90mm | 90 | 8000090 |



SPINAL CERVICAL PLATES SCREW

4U Medikal Spinal Servikal Plak Vidası

CE

| AÇIKLAMA / Description | ÖLÇÜ / Size | KOD / Code |
|---|-------------|--------------------|
| 4U SPINAL CERVICAL PLATE SCREW 3.5X12mm | 3.5X12 | 8103512 |
| 4U SPINAL CERVICAL PLATE SCREW 3.5X14mm | 3.5X14 | 8103514 |
| 4U SPINAL CERVICAL PLATE SCREW 3.5X16mm | 3.5X16 | 8103516 |
| 4U SPINAL CERVICAL PLATE SCREW 3.5X18mm | 3.5X18 | 8103518 |
| 4U SPINAL CERVICAL PLATE SCREW 3.5X20mm | 3.5X20 | 8103520 |
| 4U SPINAL CERVICAL PLATE SCREW 4.0X12mm | 4.0X12 | 8104012 |
| 4U SPINAL CERVICAL PLATE SCREW 4.0X14mm | 4.0X14 | 8104014 |
| 4U SPINAL CERVICAL PLATE SCREW 4.0X16mm | 4.0X16 | 8104016 |
| 4U SPINAL CERVICAL PLATE SCREW 4.0X18mm | 4.0X18 | 8104018 |
| 4U SPINAL CERVICAL PLATE SCREW 4.0X20mm | 4.0X20 | 8104020 |
| 4U SPINAL CERVICAL PLATE SCREW 4.0X22mm | 4.0X22 | SPECIAL PRODUCTION |

SPINAL CERVICAL PRODUCTS

4U Medikal Spinal Anterior Servikal Plak

CE

| AÇIKLAMA / Description | ÖLÇÜ / Size | KOD / Code |
|---------------------------------|-------------|--------------------|
| 4U SPINAL OCCIPITAL PLATE SHORT | S | SPECIAL PRODUCTION |
| 4U SPINAL OCCIPITAL PLATE LONG | L | SPECIAL PRODUCTION |



SPINAL POSTERIOR CERVICAL POLYAXIAL SCREW & ROD



4U Medikal Spinal Posterior Servikal Poliaxial Vida

| AÇIKLAMA / Description | ÖLÇÜ / Size | KOD / Code |
|--|-------------|------------|
| 4U SPINAL POSTERIOR CERVICAL POLYAXIAL SCREW 3.5X10 mm | 3.5X10 | 1803510 |
| 4U SPINAL POSTERIOR CERVICAL POLYAXIAL SCREW 3.5X12 mm | 3.5X12 | 1803512 |
| 4U SPINAL POSTERIOR CERVICAL POLYAXIAL SCREW 3.5X14 mm | 3.5X14 | 1803514 |
| 4U SPINAL POSTERIOR CERVICAL POLYAXIAL SCREW 3.5X16 mm | 3.5X16 | 1803516 |
| 4U SPINAL POSTERIOR CERVICAL POLYAXIAL SCREW 3.5X18 mm | 3.5X18 | 1803518 |
| 4U SPINAL POSTERIOR CERVICAL POLYAXIAL SCREW 3.5X20 mm | 3.5X20 | 1803520 |
| 4U SPINAL POSTERIOR CERVICAL POLYAXIAL SCREW 3.5X22 mm | 3.5X22 | 1803522 |
| 4U SPINAL POSTERIOR CERVICAL POLYAXIAL SCREW 3.5X24 mm | 3.5X24 | 1803524 |
| 4U SPINAL POSTERIOR CERVICAL POLYAXIAL SCREW 3.5X26 mm | 3.5X26 | 1803526 |
| 4U SPINAL POSTERIOR CERVICAL POLYAXIAL SCREW 3.5X28 mm | 3.5X28 | 1803528 |
| 4U SPINAL POSTERIOR CERVICAL POLYAXIAL SCREW 3.5X30 mm | 3.5X30 | 1803530 |
| 4U SPINAL POSTERIOR CERVICAL POLYAXIAL SCREW 4.0X10 mm | 4.0X10 | 1804010 |
| 4U SPINAL POSTERIOR CERVICAL POLYAXIAL SCREW 4.0X12 mm | 4.0X12 | 1804012 |
| 4U SPINAL POSTERIOR CERVICAL POLYAXIAL SCREW 4.0X14 mm | 4.0X14 | 1804014 |
| 4U SPINAL POSTERIOR CERVICAL POLYAXIAL SCREW 4.0X16 mm | 4.0X16 | 1804016 |
| 4U SPINAL POSTERIOR CERVICAL POLYAXIAL SCREW 4.0X18 mm | 4.0X18 | 1804018 |
| 4U SPINAL POSTERIOR CERVICAL POLYAXIAL SCREW 4.0X20 mm | 4.0X20 | 1804020 |
| 4U SPINAL POSTERIOR CERVICAL POLYAXIAL SCREW 4.0X22 mm | 4.0X22 | 1804022 |
| 4U SPINAL POSTERIOR CERVICAL POLYAXIAL SCREW 4.0X24 mm | 4.0X24 | 1804024 |
| 4U SPINAL POSTERIOR CERVICAL POLYAXIAL SCREW 4.0X26 mm | 4.0X26 | 1804026 |
| 4U SPINAL POSTERIOR CERVICAL POLYAXIAL SCREW 4.0X28 mm | 4.0X28 | 1804028 |
| 4U SPINAL POSTERIOR CERVICAL POLYAXIAL SCREW 4.0X30 mm | 4.0X30 | 1804030 |
| 4U SPINAL POSTERIOR CERVICAL ROD Ø:3.5 L:40 | 3.5X40 | 2400340 |
| 4U SPINAL POSTERIOR CERVICAL ROD Ø:3.5 L:80 | 3.5X80 | 2400380 |
| 4U SPINAL POSTERIOR CERVICAL ROD Ø:3.5 L:120 | 3.5X120 | 2403120 |
| 4U SPINAL POSTERIOR CERVICAL ROD Ø:3.5 L:200 | 3.5X200 | 2403200 |



SPINAL CERVICAL & LUMBAR CORPECTOMY CAGES SYSTEMS

Titanyum materyalden üretilen ve iç içe geçmiş iki parçadan oluşan korpektomi cage'in, omurlar arasına kolayca yerleştirilerek distrakte olabilme özelliği bulunmaktadır. Servikal ve Lumbar bölgede kullanılabilen ürünümüz, alt ve üst vertebra ile birebir temas sağlayan açılı yüzeye sahiptir. Vertebra ile tam temas oluşturan yüzeylerin dişli yapısı sayesinde, ürün yüzeye daha sıkı tutunma sağlayarak, kayma riskini ortadan kaldırmaktadır. Distraksiyon öncesi greftleme olanağı sağlayan ve geniş bir greft alanı sunan sistem distraksiyon sonrası tek aşamalı bir kilitleme mekanizmasına sahiptir.

Titanium material produced and nested corpectomy cage consisting of two parts, can easily be placed between the vertebra are the features to be distraction. Product is available in the cervical and lumbar spine, the upper and lower vertebrae, providing one to one contact with the angled surface. With gear structure with full contact surfaces of vertebrae forming the product surface, providing a tighter grip, eliminating the risk of slipping. Distraction prior to grafting, graft area at that provide a locking device which has a single-stage system after distraction.

Spinal Fiksasyon Lumbar Korpektomi Kafes Spinal Fixation Lumbar Corpectomy Cage



Kullanım Alanı

Usage Area

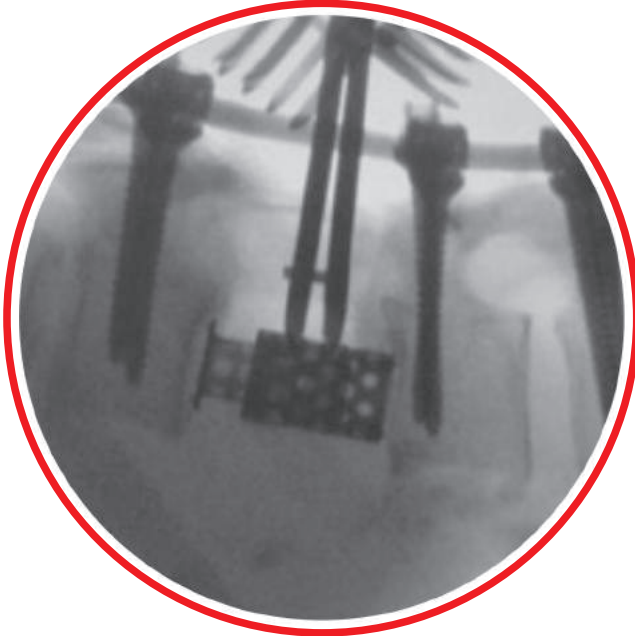
Genişleyebilir Korpektomi Kafes, vertebral yapının bir kısmının ya da tamamının hasar gördüğü durumlarda kullanılabilir. Vertebral yapıdaki bu hasarlar, tümörler, kırıklar ve enfeksiyonlar sebebiyle oluşabilir.

The expandable corpectomy cage, vertebral structure is used in cases where a portion or all of the damage. This damages the vertebral structure, tumors, fractures, and infections may occur due to



4U Medikal Spinal Fiksasyon
Lumbar Corpectomy Kafes Sistemi

4U Medical Spinal Fixation Lumbar
Corpectomy Cage System



Anatomik Konum

Anatomical Location

4U Medikal Vertebral Corpectomy Cage, tek taraflı genişleyebilir korpektomi kafes, anterior servikal ve thorakik vertebral gövdede vertebral yapı yenilemelerinde kullanılmaktadır. Bu kafes aynı zamanda intersomatik füzyonlarda kullanılabilir.

4U Medical Vertebral Corpectomy Cage, expandable single-sided anterior cervical corpectomy cage for a few years and the vertebral body, vertebral thoracic used in building renovations. This cage is also used intersomatic fusions.

Ambalaj şekli

Packaging Description

Korpektomi cage implantlar şeffaf bir düşük yoğunluklu esnek polietilen plastik bir torba içinde steril olmayan şekilde ambalajlanmaktadır.

Corpectomy cage implants are packed as non sterile in a transparent low-density supple polyethylene plastic bag.

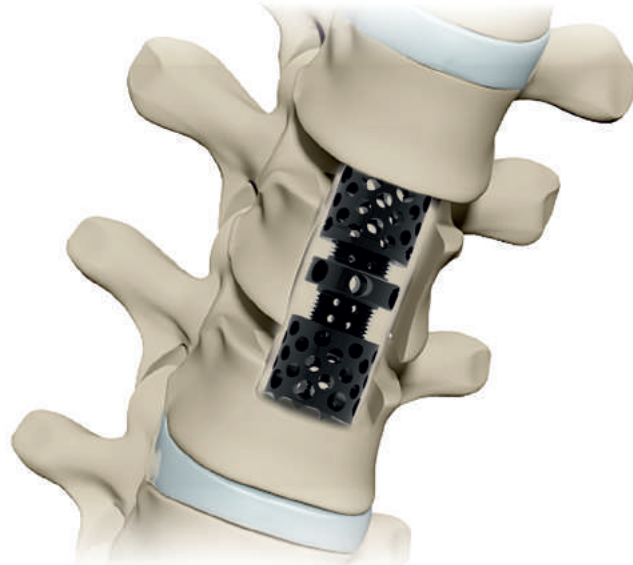


SPINAL CERVICAL CORPECTOMY CAGES

CE

4U Medikal Spinal Servikal Korpektomi Kafes

| AÇIKLAMA / Description | ÖLÇÜ / Size | KOD / Code |
|---|-------------|------------|
| 4U SPINAL CERVICAL CORPECTOMY CAGE Ø10MM [10,13] | 10X10X13 | 6001013 |
| 4U SPINAL CERVICAL CORPECTOMY CAGE Ø10MM [10,17] | 10X10X17 | 6001017 |
| 4U SPINAL CERVICAL CORPECTOMY CAGE Ø10MM [16,25] | 10X16X25 | 6001625 |
| 4U SPINAL CERVICAL CORPECTOMY CAGE Ø12MM [10,13] | 12X10X13 | 6101013 |
| 4U SPINAL CERVICAL CORPECTOMY CAGE Ø12MM [10,17] | 12X10X17 | 6101017 |
| 4U SPINAL CERVICAL CORPECTOMY CAGE Ø12MM [16,25] | 12X16X25 | 6101625 |
| 4U SPINAL CERVICAL CORPECTOMY CAGE Ø12MM [24,40] | 12X24X40 | 6102440 |
| 4U SPINAL CERVICAL CORPECTOMY CAGE Ø12MM [39,65] | 12X39X65 | 6103965 |
| 4U SPINAL CERVICAL CORPECTOMY CAGE Ø14MM [10,13] | 14X10X13 | 6201013 |
| 4U SPINAL CERVICAL CORPECTOMY CAGE Ø14MM [10,17] | 14X10X17 | 6201017 |
| 4U SPINAL CERVICAL CORPECTOMY CAGE Ø14MM [16,25] | 14X16X25 | 6201625 |
| 4U SPINAL CERVICAL CORPECTOMY CAGE Ø14MM [24,40] | 14X24X40 | 6202440 |
| 4U SPINAL CERVICAL CORPECTOMY CAGE Ø14MM [39,65] | 14X39X65 | 6203965 |
| 4U SPINAL CERVICAL CORPECTOMY CAGE Ø16mm [10,13] | 16X10X13 | 6301013 |
| 4U SPINAL CERVICAL CORPECTOMY CAGE Ø16mm [10,17] | 16X10X17 | 6301017 |
| 4U SPINAL CERVICAL CORPECTOMY CAGE Ø16mm [16,25] | 16X16X25 | 6301625 |
| 4U SPINAL CERVICAL CORPECTOMY CAGE Ø16mm [24,40] | 16X24X40 | 6302440 |
| 4U SPINAL CERVICAL CORPECTOMY CAGE Ø16mm [39,65] | 16X39X65 | 6303965 |
| 4U SPINAL CERVICAL CORPECTOMY CAGE Ø20mm [10,13] | 20X10X13 | 6401013 |
| 4U SPINAL CERVICAL CORPECTOMY CAGE Ø20mm [10,17] | 20X10X17 | 6401017 |
| 4U SPINAL CERVICAL CORPECTOMY CAGE Ø20mm [16,25] | 20X16X25 | 6401625 |
| 4U SPINAL CERVICAL CORPECTOMY CAGE Ø12MM [16,25] ANGLED | 12X16X25/A | 6151625 |
| 4U SPINAL CERVICAL CORPECTOMY CAGE Ø12MM [24,40] ANGLED | 12X24X40/A | 6152440 |
| 4U SPINAL CERVICAL CORPECTOMY CAGE Ø12MM [39,65] ANGLED | 12X39X65/A | 6153965 |
| 4U SPINAL CERVICAL CORPECTOMY CAGE Ø14MM [16,25] ANGLED | 14X16X25/A | 6251625 |
| 4U SPINAL CERVICAL CORPECTOMY CAGE Ø14MM [24,40] ANGLED | 14X24X40/A | 6252440 |
| 4U SPINAL CERVICAL CORPECTOMY CAGE Ø14MM [39,65] ANGLED | 14X39X65/A | 6253965 |



SPINAL LUMBAR CORPECTOMY CAGES

4U Medikal Spinal Lumbar Korpektomi Kafes

CE

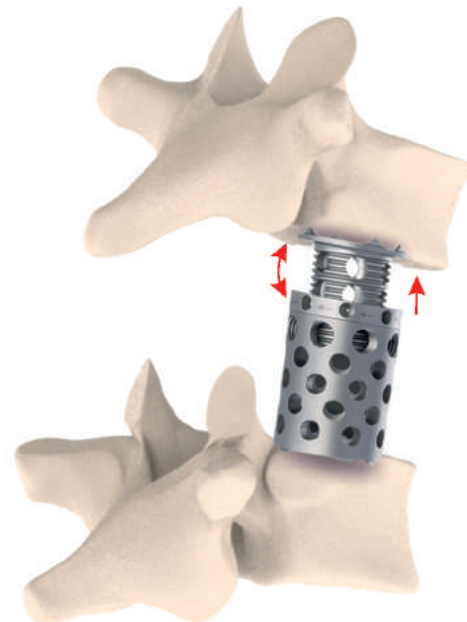
| AÇIKLAMA / Description | ÖLÇÜ / Size | KOD / Code |
|---|---------------|------------|
| 4U SPINAL LUMBAR CORPECTOMY CAGE Ø20 [25,34] | 20X25X34 | 5702534 |
| 4U SPINAL LUMBAR CORPECTOMY CAGE Ø20 [32,44] | 20X32X44 | 5703244 |
| 4U SPINAL LUMBAR CORPECTOMY CAGE Ø20 [42,58] | 20X42X58 | 5704258 |
| 4U SPINAL LUMBAR CORPECTOMY CAGE Ø20 [56,84] | 20X56X84 | 5705684 |
| 4U SPINAL LUMBAR CORPECTOMY CAGE Ø24 [23,29] | 24X23X29 | 5802329 |
| 4U SPINAL LUMBAR CORPECTOMY CAGE Ø24 [28,40] | 24X28X40 | 5802840 |
| 4U SPINAL LUMBAR CORPECTOMY CAGE Ø24 [38,54] | 24X38X54 | 5803854 |
| 4U SPINAL LUMBAR CORPECTOMY CAGE Ø24 [52,76] | 24X52X76 | 5805276 |
| 4U SPINAL LUMBAR CORPECTOMY CAGE Ø24 [74,114] | 24X74X114 | 5807411 |
| 4U SPINAL LUMBAR CORPECTOMY CAGE Ø28 [30,44] | 28X30X44 | 5903044 |
| 4U SPINAL LUMBAR CORPECTOMY CAGE Ø28 [42,58] | 28X42X58 | 5904258 |
| 4U SPINAL LUMBAR CORPECTOMY CAGE Ø28 [56,84] | 28X56X84 | 5905684 |
| 4U SPINAL LUMBAR CORPECTOMY CAGE Ø28 [82,130] | 28X82X130 | 5908213 |
| 4U SPINAL LUMBAR CORPECTOMY CAGE Ø28 [100,140] | 28X100X140 | 5901014 |
| 4U SPINAL LUMBAR CORPECTOMY CAGE Ø20 [25,34] ANGLED | 20X25X34 /A | 5752534 |
| 4U SPINAL LUMBAR CORPECTOMY CAGE Ø20 [32,44] ANGLED | 20X32X44 /A | 5753244 |
| 4U SPINAL LUMBAR CORPECTOMY CAGE Ø20 [42,58] ANGLED | 20X42X58 /A | 5754258 |
| 4U SPINAL LUMBAR CORPECTOMY CAGE Ø20 [56,84] ANGLED | 20X56X84 /A | 5755684 |
| 4U SPINAL LUMBAR CORPECTOMY CAGE Ø24 [23,29] ANGLED | 24X23X29 /A | 5852329 |
| 4U SPINAL LUMBAR CORPECTOMY CAGE Ø24 [28,40] ANGLED | 24X28X40 /A | 5852840 |
| 4U SPINAL LUMBAR CORPECTOMY CAGE Ø24 [38,54] ANGLED | 24X38X54 /A | 5853854 |
| 4U SPINAL LUMBAR CORPECTOMY CAGE Ø24 [52,76] ANGLED | 24X52X76 /A | 5855276 |
| 4U SPINAL LUMBAR CORPECTOMY CAGE Ø24 [74,114] ANGLED | 24X74X114 /A | 5857411 |
| 4U SPINAL LUMBAR CORPECTOMY CAGE Ø28 [30,44] ANGLED | 28X30X44 /A | 5953044 |
| 4U SPINAL LUMBAR CORPECTOMY CAGE Ø28 [42,58] ANGLED | 28X42X58 /A | 5954258 |
| 4U SPINAL LUMBAR CORPECTOMY CAGE Ø28 [56,84] ANGLED | 28X56X84 /A | 5955684 |
| 4U SPINAL LUMBAR CORPECTOMY CAGE Ø28 [82,130] ANGLED | 28X82X130 /A | 5958213 |
| 4U SPINAL LUMBAR CORPECTOMY CAGE Ø28 [100,140] ANGLED | 28X100X140 /A | 5951014 |



Titanyum Yüzey
Titanium Surface



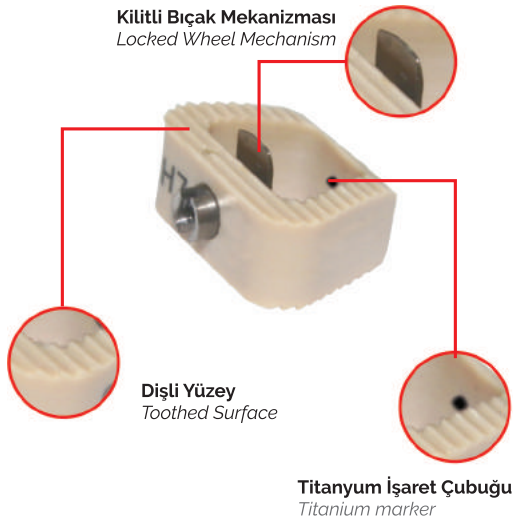
Dişli Yüzey
Toothed Surface



SPINAL CERVICAL PEEK CAGE

Anterior disk mesafesi implantı in-vivo uygulamalar için vücut uyumlu termoplastik bir çözüm olan ve hiçbir artefact yaratmayan MR uyumlu PEEK materyalden imal edilmiştir. Anatomik yapıya uygun olarak eğimli yapıya sahip ve füzyon amacıyla üzerinde boşluk bulunmaktadır. Superior ve Inferior yüzeylere birebir tutunum sağlayan dişli ve bıçak sistemli yapıya sahiptir. Bıçaklı cage mekanizması alt ve üst endplate'leri tutması için keskin ve geniş yüzeylere sahiptir. İmplantasyondan sonra sabitleme için servikal plak gibi anteriordan veya posteriordan ikinci bir implantasyona ihtiyaç duymamaktadır.

The anterior disc space for the implant in-vivo applications, and no artefact which the body does not generate a solution that is compatible with the MR-compatible thermoplastic material is made of PEEK. In accordance with the anatomical structure on the space for the purpose of fusion of nature and are inclined. Superior and inferior surfaces, gear and blade system that allows one to one attachment structure. Platen cage mechanism to keep the blade end of the upper and lower surfaces are sharp and wide. Such as the anterior or posterior cervical plate fixation after implantation implantation does not need a second.



Kullanım Alanı

Usage Area

Anterior Cervical PEEK cagenin bıçaklı olması; alt ve üst vertebra korpusuna girmesi, hem posterior hem de anterior dislokasyonu engellemesi, daha az invaziv olması, ameliyat süresini kısaltması, boyunluk ihtiyacını ve süresini azaltması açısından diğer plak-vida ile füzyon ihtiyacını ortadan kaldırır. Anterior servikal diskektomi otojen greft ile füzyon ve anterior servikal diskektomi cage ile füzyon tekniklerine üstün olduğunu düşündürmektedir.

Anterior Cervical PEEK Cage is blade, into the upper and lower vertebral corpus, as well as the anterior and posterior dislocation of the block, is less invasive than surgery, and shortens the duration of a cervical collar, and reduce the need for fusion with plate-screw, eliminating the need for the other. Anterior cervical discectomy and fusion with autogenous graft techniques of anterior cervical discectomy and fusion cage thought to be superior.

Anatomik Konum

Anatomical Location

4U Medical Anterior Cervical Peek Cage, yandaki (üstteki) şekilde gösterildiği gibi MR uyumludur. Kendi stabilizasyonu ile anatomik lordozu ve intervertebral eklem yalıtıcısı olarak boyun bölgesine yerleştirilmek üzere tasarlanmıştır.

4U Medical Anterior Cervical Peek Cage, on the right(top) side as shown in the MR compatible. Stabilization and anatomic lordosis and intervertebral joints as their insulator is designed to be placed in the neck area.

Ambalaj Şekli

Packaging Description

Cervical cage'ler şeffaf bir düşük yoğunluklu esnek polietilen plastik bir torba içinde steril olmayan şekilde ambalajlanmaktadır.

Cervical cages are packed as non sterile in a transparent low-density supple polyethylene plastic bag.

SPINAL CERVICAL BLADED ANATOMIC PEEK CAGE

4U Medikal Spinal Servikal Bıçaklı Anatomik Peek Kafes



| AÇIKLAMA / Description | ÖLÇÜ / Size | KOD / Code |
|--|-------------|------------|
| 4U SPINAL CERVICAL BLADED ANATOMIC PEEK CAGE 4X12X14 | 4X12X14 | 5100414 |
| 4U SPINALCERVICAL BLADED ANATOMIC PEEK CAGE 5X12X14 | 5X12X14 | 5100514 |
| 4U SPINALCERVICAL BLADED ANATOMIC PEEK CAGE 6X12X14 | 6X12X14 | 5100614 |
| 4U SPINALCERVICAL BLADED ANATOMIC PEEK CAGE 7X12X14 | 7X12X14 | 5100714 |
| 4U SPINALCERVICAL BLADED ANATOMIC PEEK CAGE 8X12X14 | 8X12X14 | 5100814 |
| 4U SPINALCERVICAL BLADED ANATOMIC PEEK CAGE 4X14X14 | 4X14X14 | 5200414 |
| 4U SPINALCERVICAL BLADED ANATOMIC PEEK CAGE 5X14X14 | 5X14X14 | 5200514 |
| 4U SPINALCERVICAL BLADED ANATOMIC PEEK CAGE 6X14X14 | 6X14X14 | 5200614 |
| 4U SPINALCERVICAL BLADED ANATOMIC PEEK CAGE 7X14X14 | 7X14X14 | 5200714 |
| 4U SPINALCERVICAL BLADED ANATOMIC PEEK CAGE 8X14X14 | 8X14X14 | 5200814 |
| 4U SPINAL CERVICAL BLADED ANATOMIC PEEK CAGE 4X12X16 | 4X12X16 | 5300416 |
| 4U SPINAL CERVICAL BLADED ANATOMIC PEEK CAGE 5X12X16 | 5X12X16 | 5300516 |
| 4U SPINALCERVICAL BLADED ANATOMIC PEEK CAGE 6X12X16 | 6X12X16 | 5300616 |
| 4U SPINALCERVICAL BLADED ANATOMIC PEEK CAGE 7X12X16 | 7X12X16 | 5300716 |
| 4U SPINALCERVICAL BLADED ANATOMIC PEEK CAGE 8X12X16 | 8X12X16 | 5300816 |

Implantın malzemesi, insan vücuduna uyumlu PEEK materyalden yapılmıştır. Superior ve Inferior yüzeylere birebir tutunma sağlayabilecek dişli bir yapıya sahiptir. End plakelere tutunan yüzeyleri üzerinde implantasyon stabilitesini sağlayan pimleri bulunmaktadır. Radyografik sistemlerde gözlenebilmesi için Tantalum materyalinden markalara sahiptir. Ürün anterior disk mesafesinden Smith-Robinson tekniği ile implante edilir. Implant yapısı anatomik olarak tamamen cervical bölgeye uyumludur.

Implant material, compatible with the human body made of PEEK material. The implant has gear surfaces that can one-to-one hold. Superior and inferior surfaces maintained in exactly the gear has a structure that can. Sticking to the stability of the implant on the surfaces of the pins which are end platen. Tantalum material has markings for observation of radiographic systems. Product is implanted in the anterior disc distance Smith-Robinson technique. The implant structure is compatible with complete anatomical cervical region.

Kullanım Alanı

Usage Area

Bu ürün gurubuna ait iki farklı servikal cage bulunmaktadır.

- Cervical Peek Cage
- Expandable Cervical Peek Cage

15 farklı ürün ebatı ve bu ürünleri uygularken uygun ürün ebatını tayin etmek için 15 çeşit deneme türü bulunan ürünümüz tek el aleti ile implantasyon yaparak, kullanıcıya zaman tasarrufu ve kolaylık sunmaktadır.

There are two different cervical cage of this product group.

- Cervical Peek Cage
- Expandable Cervical Peek Cage

When applying these products in 15 different product size and product size to determine the appropriate type of experiment with 15 kinds of product by implantation with a single tool, the user provides time-saving and convenience.

Anatomik uygunluk için
2° eğimli yapı
2° angle. compability
with anatomy

Dişli Yüzey
Toothed Surface

Titanyum
İşaret Çubuğu
Titanium marker

Anatomik Konum Anatomical Location

MSFX Anterior Cervical Peek Cage, yandaki şekilde gösterildiği gibi MR uyumludur. Kendi stabilizasyonu ile intervertebral eklem yalıtıcısı olarak anatomik lordozu sağlamak amacı ile boyun bölgesine yerleştirilmek için tasarlanmıştır.

MSFX Anterior Cervical Peek Cage is compatible with MRI, as shown in the illustration. With stabilization of the intervertebral joints as their insulator is designed to be placed on the neck area in order to provide anatomical lordosis.

SPINAL CERVICAL ANATOMIC PEEK CAGE

4U Medikal Spinal Servikal Anatomik Peek Kafes



| AÇIKLAMA / Description | ÖLÇÜ / Size | KOD / Code |
|---|-------------|------------|
| 4U SPINAL CERVICAL ANATOMIC PEEK CAGE 4X12X14 | 4X12X14 | 5400414 |
| 4U SPINAL CERVICAL ANATOMIC PEEK CAGE 5X12X14 | 5X12X14 | 5400514 |
| 4U SPINAL CERVICAL ANATOMIC PEEK CAGE 6X12X14 | 6X12X14 | 5400614 |
| 4U SPINAL CERVICAL ANATOMIC PEEK CAGE 7X12X14 | 7X12X14 | 5400714 |
| 4U SPINAL CERVICAL ANATOMIC PEEK CAGE 8X12X14 | 8X12X14 | 5400814 |
| 4U SPINAL CERVICAL ANATOMIC CAGE 4X14X16 | 4X14X16 | 5500414 |
| 4U SPINAL CERVICAL ANATOMIC CAGE 5X14X16 | 5X14X16 | 5500514 |
| 4U SPINAL CERVICAL ANATOMIC CAGE 6X14X16 | 6X14X16 | 5500614 |
| 4U SPINAL CERVICAL ANATOMIC CAGE 7X14X16 | 7X14X16 | 5500714 |
| 4U SPINAL CERVICAL ANATOMIC CAGE 8X14X16 | 8X14X16 | 5500814 |

SPINAL CERVICAL EXPANDABLE PEEK CAGE

4U Medikal Spinal Servikal Genişleyebilen Peek Kafes



Anatomik uygunluk için
2° eğimli yapı
2° angle. compability
with anatomy



| AÇIKLAMA / Description | ÖLÇÜ / Size | KOD / Code |
|---|-------------|------------|
| 4U SPINAL CERVICAL EXPANDABLE PEEK CAGE 12X14X5 | 12X14X5 | 5601205 |
| 4U SPINAL CERVICAL EXPANDABLE PEEK CAGE 12X14X6 | 12X14X6 | 5601206 |
| 4U SPINAL CERVICAL EXPANDABLE PEEK CAGE 12X14X7 | 12X14X7 | 5601207 |
| 4U SPINAL CERVICAL EXPANDABLE PEEK CAGE 12X14X8 | 12X14X8 | 5601208 |

SPINAL TLIF CAGE

Anatomik uygunluk için 2° eğimli yapı
2° angle, compability with anatomy

Döndürülebilir
Mafsal



Lordoz açının korunması
Maintenance of Lordosis

Lumbar bölge posterior disk mesafesi implantı in-vivo uygulamalar için vücut uyumlu, Xray altında görülebilen PEEK materyalden üretilmiştir. Tlif Cage'lerin proximal ve distal yüzeyleri balık sırtı şeklinde ters yönde işlenmiş, yerinden çıkmayı engelleyen yapıdadır. Cagelerin ön uç kısımları, kolay yerleştirmek için Oblik olarak dizayn edilmiştir.

Posterior Lumbar disc space area for implant body is compatible with the in-vivo applications, the X-ray that can be seen under the proximal and distal surfaces of the PEEK cage herringbone material in the form of Tlif processed in the opposite direction, to go around the block structure. Cage front end portions, is designed as easy to place the oblique.

Kullanım Alanı Usage Area

Dejeneratif disk hastalıklarında, post disektomi sendromunda, disk mesafesinden sonra revizyon cerrahisinde, dejeneratif instabilite, litik spondilolistezis, konjenital malpozisyon, klinik instabilitesi olan spinal kanal stenozu ve psödoartroz vakalarında endike olmaktadır. Anatomik yapıya uygun yerleştirilebilmesi için 3 farklı lordotik açı seçeneği ile uygun ürün ebatını tayin etmek için çeşitli deneme türleri mevcuttur. Tek el aleti kullanılarak yapılan implantasyonla kullanıcıya zaman tasarrufu ve kolaylık sunmaktadır. Kafes üzerindeki boş alanla aynı ölçülere sahip hazır kalıp ile sentetik kemik grefti kalıpları yerleştirilerek kullanılacak şekilde sunulmaktadır.

Degenerative disc disease, post disectomy syndrome, disc distance after the revision surgery, degenerative instability, lytic spondilolistezis, congenital malposition, clinical instability is indicated in all cases of spinal canal stenosis and pseudoarthrosis. Anatomical structure, suitable for placement with a choice of 3 different angles lordotik various test types are available to determine the appropriate product size. Implantasyonla made using a single tool offers the time savings and convenience. Lattice pattern on the free space of the same size ready to be used with synthetic bone graft are placed in molds.

Anatomik Konum Anatomical Location

MSFX Lumbar Cage, yandaki şekilde gösterildiği gibi MR uyumludur. Kendi stabilizasyonu ile intervertebral eklem yalıtıcısı olarak, anatomik lordoz sağlamak için bel bölgesine yerleştirilmek üzere tasarlanmıştır. Kompleks omurga hastalıklarında cerrahi, dekompresyon ve stabilizasyon amacı ile yapılmaktadır.

MSFX Lumbar Cage is compatible with MR, as shown in the illustration. With stabilization of the intervertebral joints as their insulator, is designed to be placed in the waist area to provide anatomical lordosis. Complex diseases of the spine surgery is done with the purpose of decompression and stabilization.

Ambalaj Şekli Packaging Description

TLIF cageler şeffaf ve düşük yoğunluklu esnek polietilen plastik bir torba içinde steril olmayan şekilde ambalajlanmaktadır.

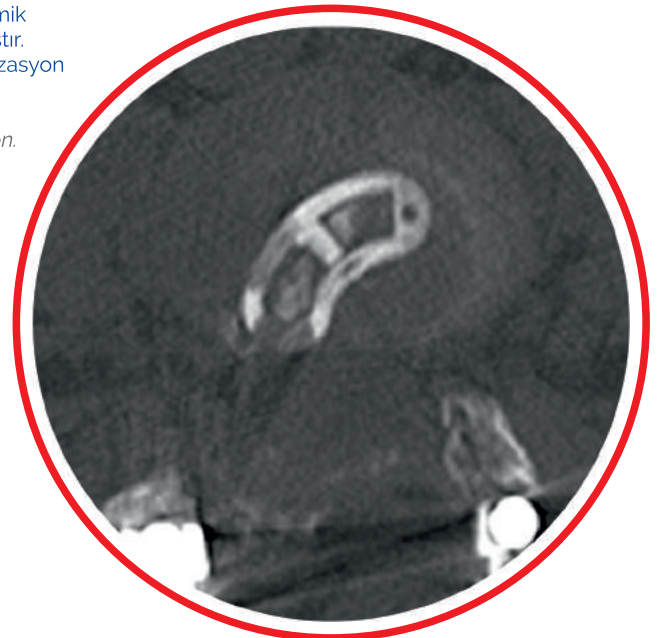
TLIF Cages are packed as non sterile in a transparent low-density supple polyethylene plastic bag.

TLIF (Muz) Kafes TLIF (Banana) Cage

Anatomik uygunluk için
2° eğimli yapı
2° angle, compability
with anatomy

Dişli Yüzey
Toothed Surface

Titanyum
İşaret
Çubuğu
Titanium
marker



SPINAL TLIF CAGE

4U Medikal Spinal Tlif Kafes



| AÇIKLAMA / Description | ÖLÇÜ / Size | KOD / Code |
|----------------------------------|--------------|--------------------|
| 4U SPINAL TLIF CAGE 24X10X7 | 24X10X7 | 4102407 |
| 4U SPINAL TLIF CAGE 24X10X8 | 24X10X8 | SPECIAL PRODUCTION |
| 4U SPINAL TLIF CAGE 24X10X9 | 24X10X9 | 4102409 |
| 4U SPINAL TLIF CAGE 24X10X10 | 24X10X10 | SPECIAL PRODUCTION |
| 4U SPINAL TLIF CAGE 24X10X11 | 24X10X11 | 4102411 |
| 4U SPINAL TLIF CAGE 24X10X12 | 24X10X12 | SPECIAL PRODUCTION |
| 4U SPINAL TLIF CAGE 24X10X13 | 24X10X13 | 4102413 |
| 4U SPINAL TLIF CAGE 28X10X7 | 28X10X7 | 4202807 |
| 4U SPINAL TLIF CAGE 28X10X8 | 28X10X8 | SPECIAL PRODUCTION |
| 4U SPINAL TLIF CAGE 28X10X9 | 28X10X9 | 4202809 |
| 4U SPINAL TLIF CAGE 28X10X10 | 28X10X10 | SPECIAL PRODUCTION |
| 4U SPINAL TLIF CAGE 28X10X11 | 28X10X11 | 4202811 |
| 4U SPINAL TLIF CAGE 28X10X12 | 28X10X12 | SPECIAL PRODUCTION |
| 4U SPINAL TLIF CAGE 28X10X13 | 28X10X13 | 4202813 |
| 4U SPINAL TLIF CAGE 32X10X7 | 32X10X7 | 4303207 |
| 4U SPINAL TLIF CAGE 32X10X8 | 32X10X8 | SPECIAL PRODUCTION |
| 4U SPINAL TLIF CAGE 32X10X9 | 32X10X9 | 4303209 |
| 4U SPINAL TLIF CAGE 32X10X10 | 32X10X10 | SPECIAL PRODUCTION |
| 4U SPINAL TLIF CAGE 32X10X11 | 32X10X11 | 4303211 |
| 4U SPINAL TLIF CAGE 32X10X12 | 32X10X12 | SPECIAL PRODUCTION |
| 4U SPINAL TLIF CAGE 32X10X13 | 32X10X13 | 4303213 |
| 4U SPINAL TLIF CAGE 24X10X7, 4° | 24X10X7 /4° | 4152407 |
| 4U SPINAL TLIF CAGE 24X10X8, 4° | 24X10X8 /4° | SPECIAL PRODUCTION |
| 4U SPINAL TLIF CAGE 24X10X9, 4° | 24X10X9 /4° | 4152409 |
| 4U SPINAL TLIF CAGE 24X10X10, 4° | 24X10X10 /4° | SPECIAL PRODUCTION |
| 4U SPINAL TLIF CAGE 24X10X11, 4° | 24X10X11 /4° | 4152411 |
| 4U SPINAL TLIF CAGE 24X10X12, 4° | 24X10X12 /4° | SPECIAL PRODUCTION |
| 4U SPINAL TLIF CAGE 24X10X13, 4° | 24X10X13 /4° | 4152413 |
| 4U SPINAL TLIF CAGE 28X10X7, 4° | 28X10X7 /4° | 4252807 |
| 4U SPINAL TLIF CAGE 28X10X8, 4° | 28X10X8 /4° | SPECIAL PRODUCTION |
| 4U SPINAL TLIF CAGE 28X10X9, 4° | 28X10X9 /4° | 4252809 |
| 4U SPINAL TLIF CAGE 28X10X10, 4° | 28X10X10 /4° | SPECIAL PRODUCTION |
| 4U SPINAL TLIF CAGE 28X10X11, 4° | 28X10X11 /4° | 4252811 |
| 4U SPINAL TLIF CAGE 28X10X12, 4° | 28X10X12 /4° | SPECIAL PRODUCTION |
| 4U SPINAL TLIF CAGE 28X10X13, 4° | 28X10X13 /4° | 4252813 |
| 4U SPINAL TLIF CAGE 32X10X7, 4° | 32X10X7 /4° | 4353207 |
| 4U SPINAL TLIF CAGE 32X10X8, 4° | 32X10X8 /4° | SPECIAL PRODUCTION |
| 4U SPINAL TLIF CAGE 32X10X9, 4° | 32X10X9 /4° | 4353209 |
| 4U SPINAL TLIF CAGE 32X10X10, 4° | 32X10X10 /4° | SPECIAL PRODUCTION |
| 4U SPINAL TLIF CAGE 32X10X11, 4° | 32X10X11 /4° | 4353211 |
| 4U SPINAL TLIF CAGE 32X10X12, 4° | 32X10X12 /4° | SPECIAL PRODUCTION |
| 4U SPINAL TLIF CAGE 32X10X13, 4° | 32X10X13 /4° | 4353213 |



SPINAL PLIF CAGE



Posterior lomber interbody füzyon (PLIF) Cage materyali, kalıcı bir lezyon oluşturmayan, MR uyumlu peek-optima malzemesinden imal edilmiştir. PLIFCage'in proximal ve distal yüzeyleri balıksırtı şeklinde ters yönde işlenmiş, yerinden çıkmayı engelleyen yapıdadır. PLIF Cageler minimal invazive tekniğiyle uygulamaya elverişli yapıda dizayn edilmiştir.

Bu ürün gurubuna ait iki farklı PLIF cage bulunmaktadır.

- PLIF Cage
- Expandable PLIF Cage

6 farklı ürün ebatı ve bunları uygularken uygun ürün ebatını tayin etmek için 6 çeşit deneme türü bulunur.

Posterior lumbar interbody fusion (PLIF) Cage material, forming a permanent lesion, MRI-compatible material is made of PEEKOPTIMA. PLIF Cage proximal and distal surfaces of the ridge in the form of fish processed in the opposite direction, to go around the block structure. PLIF Cage minimally invasive technique available to the application structure has been designed.

There are two different PLIF cage of this product group.

- PLIF Cage
- Expandable PLIF Cage

6 different product sizes, and applying them to determine the appropriate product size, type of experiment has 6 kinds.

Kullanım Alanı

Usage Area

Posterior Lomber Interbody Füzyon (PLIF) cerrahi stabilizasyonunda ve posterior bir yaklaşım kullanılarak, bir veya daha fazla lomber intervertebral disk boşluğuna kemik grefti ile yerleştirilir. PLIF, spondilolistezis, skolyoz veya disk alanı çöküşü gibi dejeneratif lomber deformitenin düzeltilmesi ve nörolojik sıkıştırmaların kaldırılmasında özellikle yararlıdır.

Posterior Lumbar Interbody Fusion (PLIF) surgery, stabilizing and using posterior approach, one or more lumbar intervertebral disc space with the bone graft is placed. PLIF, spondylolisthesis, degenerative lumbar scoliosis or deformity such as disc space, collapse and neurologic compression is especially useful when lifting.

Anatomik Konum

Anatomical Location

Posterior Lomber Interbody Füzyon (PLIF) prosedürü stabilizasyon (füzyon) ameliyatı, diğer formlar üzerinde teorik avantajlar sağlamaktadır. İntervertebral distraksiyon ve restorasyon sağlayan üç boyutlu spinal hizalama, nöral foramenlerin (sinir geçitlerinin) ve lateral oyukların dolayı olarak nörolojik sıkışmasını engeller. Interbody implantların greft uygulaması sonrası yük merkezinin desteklenmesini, disk mesafesinin korunmasını ve spinal hizalamayı sağlar. Greft kullanılan tamamlayıcı implantlar tekniğinin türüne bağlı olarak potansiyel yük paylaşımının dengeli dağılımı oluşturulur.

Posterior lumbar interbody fusion (PLIF) procedure stabilization (fusion) surgery, offers theoretical advantages over other forms. The three-dimensional spinal alignment and restoration of intervertebral distraction, neural foramina (neural gates) and the lateral recesses indirectly prevents neurological jam. After the application of interbody graft implants to support the load center, the disc provides distance protection and spinal alignment. Depending on the technique used to graft implants complementary balanced distribution of potential load sharing is created.

Ambalaj Şekli

Packaging Description

Lomber PLIF Cage'ler şeffaf bir düşük yoğunluklu esnek polietilen plastik bir torba içinde steril olmayan şekilde ambalajlanmaktadır.

Lumbar PLIF Cages are packed as non sterile in a transparent low-density supple polyethylene plastic bag.

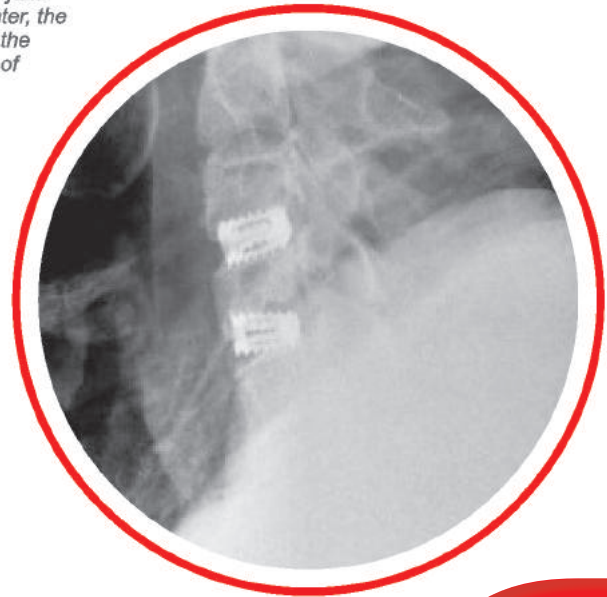


PLIF (Timsah) Kafes
PLIF (Alligator) Cage

Anatomik uygunluk için
2° eğimli yapı
2° angle, compatibility
with anatomy

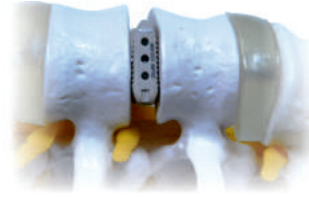
Dişli Yüzey
Toothed Surface

Titanyum İşaret
Çubuğu
Titanium
marker



SPINAL PLIF CAGE

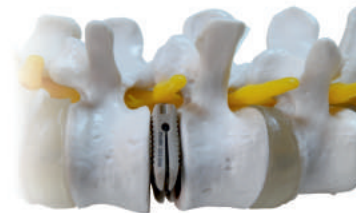
4U Medikal Spinal Plif Kafes



| AÇIKLAMA / Description | ÖLÇÜ / Size | KOD / Code |
|-----------------------------------|--------------|--------------------|
| 4U SPINAL PLIF CAGE 22X10X6 | 22X10X6 | SPECIAL PRODUCTION |
| 4U SPINAL PLIF CAGE 22X10X7 | 22X10X7 | SPECIAL PRODUCTION |
| 4U SPINAL PLIF CAGE 22X10X8 | 22X10X8 | SPECIAL PRODUCTION |
| 4U SPINAL PLIF CAGE 22X10X9 | 22X10X9 | SPECIAL PRODUCTION |
| 4U SPINAL PLIF CAGE 22X10X10 | 22X10X10 | SPECIAL PRODUCTION |
| 4U SPINAL PLIF CAGE 22X10X11 | 22X10X11 | SPECIAL PRODUCTION |
| 4U SPINAL PLIF CAGE 22X10X12 | 22X10X12 | SPECIAL PRODUCTION |
| 4U SPINAL PLIF CAGE 22X10X13 | 22X10X13 | SPECIAL PRÖDUCTION |
| 4U SPINAL PLIF CAGE 24X10X6 | 24X10X6 | SPECIAL PRODUCTION |
| 4U SPINAL PLIF CAGE 24X10X7 | 24X10X7 | 4502407 |
| 4U SPINAL PLIF CAGE 24X10X8 | 24X10X8 | 4502408 |
| 4U SPINAL PLIF CAGE 24X10X9 | 24X10X9 | 4502409 |
| 4U SPINAL PLIF CAGE 24X10X10 | 24X10X10 | 4502410 |
| 4U SPINAL PLIF CAGE 24X10X11 | 24X10X11 | 4502411 |
| 4U SPINAL PLIF CAGE 24X10X12 | 24X10X12 | 4502412 |
| 4U SPINAL PLIF CAGE 24X10X13 | 24X10X13 | SPECIAL PRODUCTION |
| 4U SPINAL PLIF CAGE 22X10X6 , 4° | 22X10X6 /4° | SPECIAL PRODUCTION |
| 4U SPINAL PLIF CAGE 22X10X7 , 4° | 22X10X7 /4° | SPECIAL PRODUCTION |
| 4U SPINAL PLIF CAGE 22X10X8 , 4° | 22X10X8 /4° | SPECIAL PRODUCTION |
| 4U SPINAL PLIF CAGE 22X10X9 , 4° | 22X10X9 /4° | SPECIAL PRODUCTION |
| 4U SPINAL PLIF CAGE 22X10X10 , 4° | 22X10X10 /4° | SPECIAL PRODUCTION |
| 4U SPINAL PLIF CAGE 22X10X11 , 4° | 22X10X11 /4° | SPECIAL PRÖDUCTION |
| 4U SPINAL PLIF CAGE 22X10X12 , 4° | 22X10X12 /4° | SPECIAL PRODUCTION |
| 4U SPINAL PLIF CAGE 22X10X13 , 4° | 22X10X13 /4° | SPECIAL PRODUCTION |
| 4U SPINAL PLIF CAGE 24X10X6 , 4° | 24X10X6 /4° | 4552406 |
| 4U SPINAL PLIF CAGE 24X10X7 , 4° | 24X10X7 /4° | 4552407 |
| 4U SPINAL PLIF CAGE 24X10X8 , 4° | 24X10X8 /4° | 4552408 |
| 4U SPINAL PLIF CAGE 24X10X9 , 4° | 24X10X9 /4° | 4552409 |
| 4U SPINAL PLIF CAGE 24X10X10 , 4° | 24X10X10 /4° | 4552410 |
| 4U SPINAL PLIF CAGE 24X10X11 , 4° | 24X10X11 /4° | 4552411 |
| 4U SPINAL PLIF CAGE 24X10X12 , 4° | 24X10X12 /4° | 4552412 |
| 4U SPINAL PLIF CAGE 24X10X13 , 4° | 24X10X13 /4° | SPECIAL PRODUCTION |

SPINAL EXPANDABLE PLIF CAGE

4U Medikal Spinal Açılabilir Plif Kafes



| AÇIKLAMA / Description | ÖLÇÜ / Size | KOD / Code |
|---|-------------|------------|
| 4U SPINAL EXPANDABLE PLIF CAGE 24X10X6 | 24X10X6 | 4602406 |
| 4U SPINAL EXPANDABLE PLIF CAGE 24X10X7 | 24X10X7 | 4602407 |
| 4U SPINAL EXPANDABLE PLIF CAGE 24X10X8 | 24X10X8 | 4602408 |
| 4U SPINAL EXPANDABLE PLIF CAGE 24X10X9 | 24X10X9 | 4602409 |
| 4U SPINAL EXPANDABLE PLIF CAGE 24X10X10 | 24X10X10 | 4602410 |
| 4U SPINAL EXPANDABLE PLIF CAGE 24X10X11 | 24X10X11 | 4602411 |
| 4U SPINAL EXPANDABLE PLIF CAGE 24X10X12 | 24X10X12 | 4602412 |
| 4U SPINAL EXPANDABLE PLIF CAGE 24X10X13 | 24X10X13 | 4602413 |

SPINAL PLIF CAGE

Anterior Servikal Disk protezi, diskektomi füzyon ameliyatı sonrasında hareketliliğin korunması amacı ile kullanılan protez, fleksiyon ekstansiyon ve rotasyonel yöndeki tüm hareketlere izin verir. MRI-CT gibi görüntü tekniklerine uygun olarak, titanyum malzemeden imal edilmektedir. Anterior kısım için Smith-Robinson yaklaşımına uygundur. Süperior ve inferior yüzeylere tutunum sağlayabilecek dişli bir yapıdadır. Bu sayede, protezin tamamı titanyum alaşımdan üst ve alt kısımları end plakelere sıkıca yerleştirilebilir. Protezde ki korozyonu ve friksiyon katsayısını düşürmek için implantın hareketliliğini sürekli sağlamak açısından sistemin iç yüzeyleri özel alaşımla kaplıdır. Tek el aleti ile yerleştirme ve sabitleme işlemi yapılmaktadır. Protez (+,-)10derece flexsion/extension,(+,-)10 derece lateral bending ve (+,-)8 derece rotasyona izin veren yapıdadır. Farklı anatomilere yönelik boy seçenekleri bulunmaktadır.

Anterior cervical disc prosthesis, the prosthesis is used with the aim of preserving mobility after discectomy fusion surgery, all the movements of flexion allows extension and rotational direction. These implants are manufactured properly to MRI-CT image techniques by titanium material. For anterior region, these are proper to Smith-Robinson approximation. Retention providing superior and inferior surfaces of a gear structure. In this way, all titanium alloy prosthesis can be placed firmly in the upper and lower parts of the end plates. To reduce corrosion and friction coefficient of the mobility of the implant prosthesis in order to provide a continuous internal surfaces of the system is covered with a special alloy. Positioning and fixing process with a single tool Prosthesis (+, -) 10degree flexsion / extension, (+, -) 10 degrees of lateral bending, and structure that allows rotation of (+, -) 8 degrees. Size options are available for different anatomies.

Servikal Fleksiyon Ekstansiyon ve Rotasyonel Hareketlilik
Mobility for Cervical Flexion Extension and Rotation



Kolay Uygulama Tekniği
Easy Technical Insertion

Cervical Disk Protezi şeffaf düşük yoğunluklu esnek polietilen plastik bir torba içinde steril olmayan şekilde ambalajlanmaktadır.
The Cervical Disc Prosthesis is packed as non sterile in a transparent low-density supple polyethylene plastic bag.

Alt ve Üst Vertebraya Sağlam Tutunuş için Dişli Yüzey
Toothed surface - Safety with the fixation into superior and inferior vertebrae



Anatomik Konum
Anatomical Location



MOBILE CERVICAL DISC PROSTHESIS

4U Medikal Mobil Servikal Disk Protezi

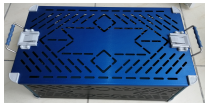


| AÇIKLAMA / Description | ÖLÇÜ / Size | KOD / Code |
|---------------------------------------|-------------|--------------------|
| MOBILE CERVICAL DISC PROSTHESIS 12-04 | 12X04 | SPECIAL PRODUCTION |
| MOBILE CERVICAL DISC PROSTHESIS 12-05 | 12X05 | SPECIAL PRODUCTION |
| MOBILE CERVICAL DISC PROSTHESIS 12-06 | 12X06 | SPECIAL PRODUCTION |
| MOBILE CERVICAL DISC PROSTHESIS 12-07 | 12X07 | SPECIAL PRODUCTION |
| MOBILE CERVICAL DISC PROSTHESIS 12-08 | 12X08 | SPECIAL PRODUCTION |
| MOBILE CERVICAL DISC PROSTHESIS 12-09 | 12X09 | SPECIAL PRODUCTION |
| MOBILE CERVICAL DISC PROSTHESIS 14-04 | 14X04 | SPECIAL PRODUCTION |
| MOBILE CERVICAL DISC PROSTHESIS 14-05 | 14X05 | SPECIAL PRODUCTION |
| MOBILE CERVICAL DISC PROSTHESIS 14-06 | 14X06 | SPECIAL PRODUCTION |
| MOBILE CERVICAL DISC PROSTHESIS 14-07 | 14X07 | SPECIAL PRODUCTION |
| MOBILE CERVICAL DISC PROSTHESIS 14-08 | 14X08 | SPECIAL PRODUCTION |
| MOBILE CERVICAL DISC PROSTHESIS 14-09 | 14X09 | SPECIAL PRODUCTION |
| MOBILE CERVICAL DISC PROSTHESIS 16-05 | 16X05 | SPECIAL PRODUCTION |
| MOBILE CERVICAL DISC PROSTHESIS 16-08 | 16X08 | SPECIAL PRODUCTION |
| MOBILE CERVICAL DISC PROSTHESIS 16-09 | 16X09 | SPECIAL PRODUCTION |

PEDICLE SCREW INSTRUMENTS



PEDICLE SCREW
INSTRUMENTS



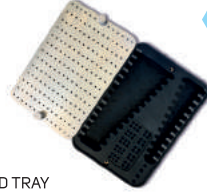
QUANTITY
1

VERTEBRAL PEDICLE SCREW
INSTRUMENT SET
(PSS0001)



QUANTITY
1

SCREW TRAY
(PSS0002)



QUANTITY
1

ROD TRAY
(PSS0003)



QUANTITY
1

BONE AWL
(PSS0004)



QUANTITY
1

PEDICLE BONE AWL LARGE
(PSS0005)



QUANTITY
1

BONE PROBE STRAIGHT
(PSS0006)



QUANTITY
1

BONE PROBE CURVED
(PSS0007)



QUANTITY
4

MODULAR TAP
(PSS0008)



QUANTITY
2

PEDICLE STRAIGHT & CURVED FEELER
(PSS0009)



QUANTITY
1

QUICK COUPLING T-HANDLE
(PSS0010)



QUANTITY
1

12 Nm T-TORQUE HANDLE
(PSS0011)



QUANTITY
2

T HANDLE FIXED POLYAXIAL
SCREW DRIVER
(PSS0012)



QUANTITY
1

ROD PUSHER ITEM
(PSS0013)



QUANTITY
1

SET SCREW DRIVER
(PSS0014)



QUANTITY
1

SET SCREW DRIVER OPEN
(PSS0015)



QUANTITY
2

LOCKING POWER ROD GRIPPER
(PSS0016)



QUANTITY
1

ROD HOLDER
(PSS0017)



QUANTITY
1

ROCKER
(PSS0018)



QUANTITY
1

PERSUADER
(PSS0019)



QUANTITY
1

LANTITORQUE
(PSS0020)



QUANTITY
1

ROD BENDER ITEM
(PSS0021)



QUANTITY
1

PARALLEL COMPRESSOR
(PSS0022)



QUANTITY
1

PARALLEL DISTRACTOR
(PSS0023)



QUANTITY
8

PEDICUL MARKER
WITH/WITHOUT STOPPER
(PSS0024)



QUANTITY
1

LYSTHESIS HEAD CUTTER
(PSS0025)



QUANTITY
1

IN-SITU BENDER (LEFT)
(PSS0026)



QUANTITY
1

IN-SITU BENDER (RIGHT)
(PSS0027)



QUANTITY
1

HEXWRENCH ROD ROTATER
(PSS0028)



QUANTITY
1

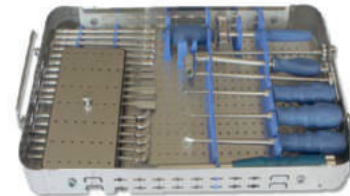
MALLET
(PSS0029)

TLIF & PLIF INSTRUMENTS



QUANTITY
1

STERILISATION BOX FOR PLIF & TLIF CAGE INSTRUMENT SET
(LPT-0001)



QUANTITY
2

FOR PLIF & TLIF CAGE IMPLANT CASE
(LPT-0002)



QUANTITY
1

QUICK COUPLING
(LPT-0003)



QUANTITY
1

LUMBAR MALLET
(LPT-0004)



QUANTITY
1

LUMBAR PEEK CAGE INSERTER
(LPT-0005)



QUANTITY
1

EXPANDABLE LUMBAR PEEK CAGE INSERTER
(LPT-0006)



QUANTITY
1

STRAIGHT CUP CURETTE
(LPT-0007)



QUANTITY
1

LEFT ANGLED CUP CURETTE
(LPT0008)



QUANTITY
1

TLIF PEEK CAGE INSERTER
(LPT-0009)



QUANTITY
1

DISC SHAVER (LPT-0010)



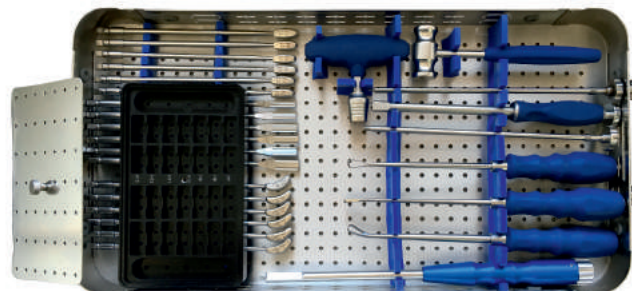
QUANTITY
8

LUMBAR PEEK CAGE TRIALS (LPT-0011)



QUANTITY
6

TLIF PEEK CAGE TRIALS (LPT-0012)



CERVICAL PEEK CAGE INSTRUMENTS

| | | |
|--|---|---|
| <p>QUANTITY 1</p> <p>Cervical AWL (CPC0001)</p> | <p>QUANTITY 6</p> <p>Cervical Pin Shaft (CPC0002)</p> | <p>QUANTITY 1</p> <p>Cervical Caspar Retractor (CPC0003)</p> |
| <p>QUANTITY 1</p> <p>Cervical Pin Holder (CPC0004)</p> | <p>QUANTITY 1</p> <p>Container&Lid (CPC0005)</p> | <p>QUANTITY 1</p> <p>Cervical Peek Cage Holder-1 (Bladed Model) (CPC0006)</p> |
| <p>QUANTITY 1</p> <p>Cervical Peek Cage Holder-2 (Regular Model) (CPC0007)</p> | <p>QUANTITY 1</p> <p>Cervical Mallet (CPC0008)</p> | <p>QUANTITY 1</p> <p>Container With Lid (Cover) (CPC0009)</p> |
| <p>QUANTITY 2</p> <p>Cervical Probe (CPC0010)</p> | <p>QUANTITY 10</p> <p>Trials (With two fixed tips at each ends, each one with different dimensions) (CPC0011)</p> | <p>QUANTITY 1</p> <p>Cervical Cage Pusher (CPC0012)</p> |
| <p>QUANTITY 2</p> <p>Cervical Curette (CPC0013)</p> | <p>QUANTITY 1</p> <p>Cervical Rasp (CPC0014)</p> | <p>QUANTITY Optionally</p> <p>Rod Cutter (OPT001)</p> |

CERVICAL PEEK CAGE INSTRUMENTS

CERVICAL & PLATE INSTRUMENTS



STERILISATION BOX FOR CERVICAL PLATE INSTRUMENT SET
(CPS00001)

QUANTITY
1



CERVICAL PLATE SCREW HOLDER
(CPS00002)

QUANTITY
1



CERVICAL PLATE DRILL 2,4 mm
(CPS00003)

QUANTITY
1



CERVICAL PLATE DRILL 2,7 mm
(CPS00004)

QUANTITY
1



CERVICAL PLATE SCREW HOLDER
(CPS00005)

QUANTITY
1



CERVICAL PLATE LOCKER
(CPS00006)

QUANTITY
1



CERVICAL PLATE DRILL GUIDE
(CPS00007)

QUANTITY
1



CERVICAL PLATE BENDER
(CPS00008)

QUANTITY
1



CERVICAL PLATE HOLDER
(CPS00009)

QUANTITY
1



CERVICAL SCREW TAP DIMETER 3,5 mm
(CPS00010)

QUANTITY
1



CERVICAL SCREW TAP DIMETER 4,0 mm
(CPS00011)

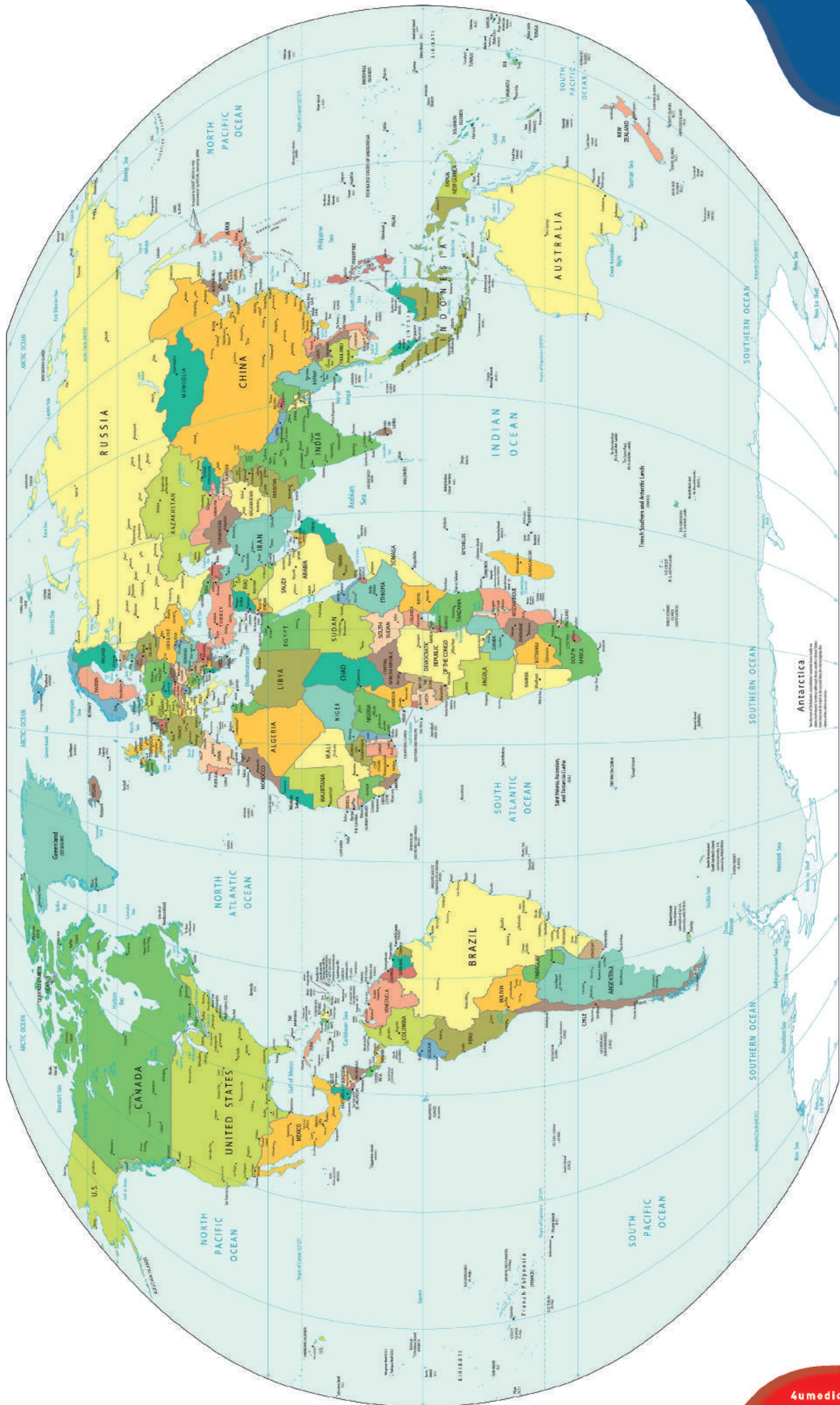
QUANTITY
1



CERVICAL PLATE & SCREW IMPLANT BOX
(CPS000012)

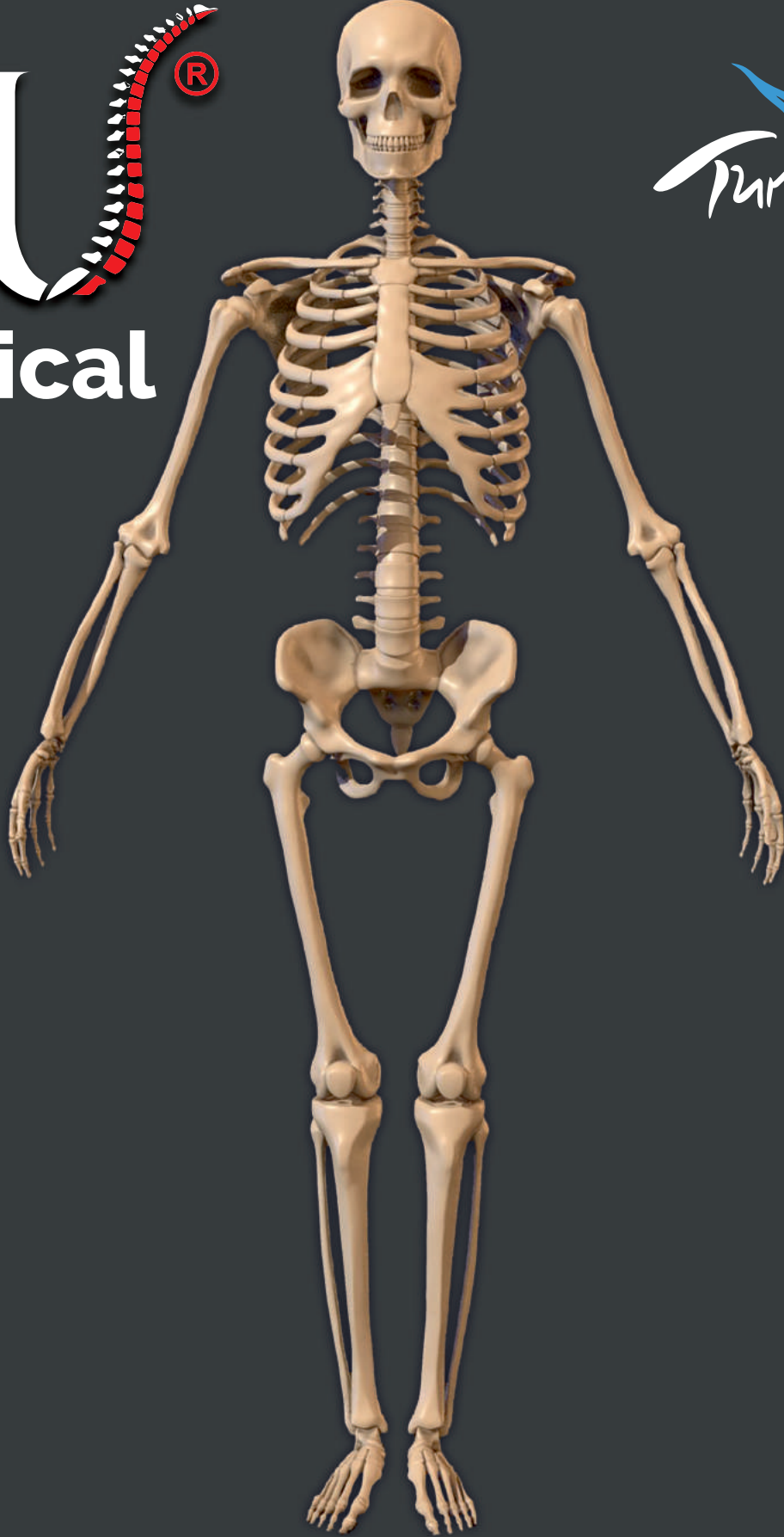
QUANTITY
1

WORLD MAP



4U
Medical

Turkey



2292



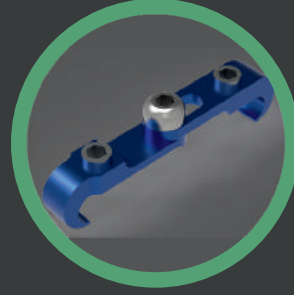
IAS

ACCREDITED
Management Systems
Certification Body
MSCB-119



www.4umedical.com.tr

Keeps You Moving



4U[®] Medical Spinal System
4U Medikal Spinal Sistem

**4U MAKİNA MEDİKAL OTOMOTİV SANAYİ
VE TİCARET LİMİTED ŞİRKETİ**

Turgut Özal Mahallesi, 2118. Cd. No: 6/A, 06370
Yenimahalle/Ankara - TURKEY
+90 312 566 0 655
info@4umedical.com.tr



www.4umedical.com.tr