

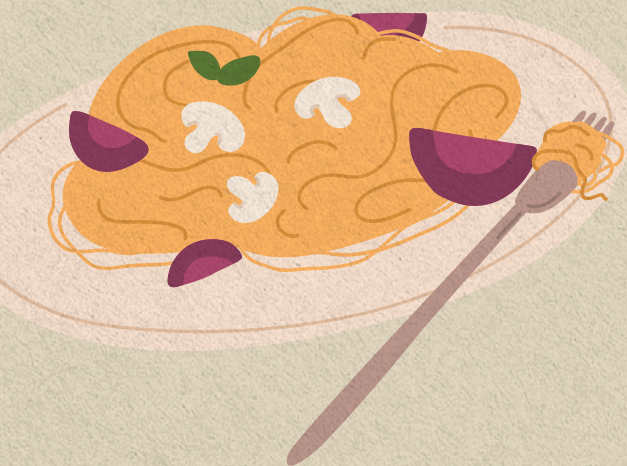
KIDS' MENU



STARTERS & SHARERS

GARLIC BREAD ve 220 kcal **£2.45**

KIDS' SOUP v 223 kcal **£2.45**
with bread & butter



PASTA

SPAGHETTI BOLOGNESE 400 kcal **£6.45**
with garlic bread

PENNE IN TOMATO SAUCE ve 370 kcal **£6.45**
with garlic bread

FISH

All served with a choice of beans or peas,
and skin on fries or mini potato waffles

JUMBO FISH FINGERS 672 kcal **£6.45**

SCAMPI 441 kcal **£6.45**



BURGERS & HOTDOG

All served with a choice of beans or peas,
and skin on fries or mini potato waffles

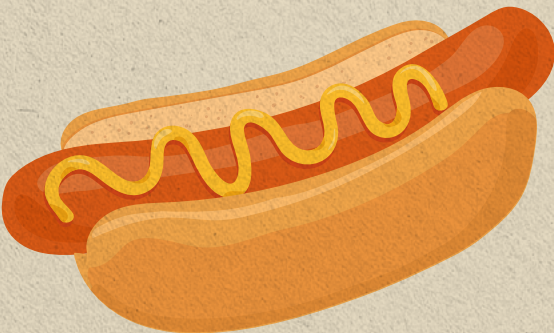
BEEF BURGER 669 kcal **£6.45**
3oz beef pattie in a brioche bun

CHEESEBURGER 752 kcal **£6.45**
3oz beef pattie in a brioche bun with melted
Monterey Jack cheese

CRISPY CHICKEN BURGER 663 kcal **£6.45**
Battered chicken fillet in a brioche bun

**CRISPY CHICKEN
CHEESEBURGER** 746 kcal **£6.45**
Battered chicken fillet in a brioche bun
with melted Monterey Jack cheese

HOT DOG 587 kcal **£6.45**
Beechwood frankfurter in a soft hot dog roll



TRADITIONAL FAVOURITES

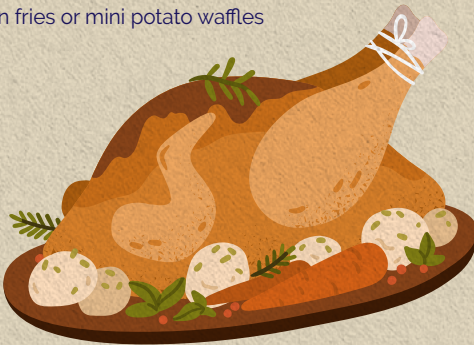
CHEESE & TOMATO PIZZA v 668 kcal **£6.45**
with a choice of beans or peas, and skin on fries
or mini potato waffles

SAUSAGE & EGG gf 819 kcal **£6.45**
Mini sausages with a fried egg and a choice of
beans or peas, and skin on fries or mini potato waffles

CRISPY CHICKEN BITES 460 kcal **£6.45**
with a choice of beans or peas, and skin on fries
or mini potato waffles

TOAD IN THE HOLE 821 kcal **£6.45**
Mini sausages in a Yorkshire pudding with gravy,
served with mash and either peas & carrots
or baked beans

CASTLE BUCKET 664 kcal **£6.45**
Chicken bites, Southern-fried chicken strips
and popcorn chicken, with beans or peas and
skin on fries or mini potato waffles



KIDS' CARVERY

Slices of your favourite meats, with all the trimmings!
(Please note, roast lamb is only available on a Sunday)

ROAST BEEF 994 kcal **£6.45**

ROAST PORK 1,011 kcal **£6.45**

ROAST TURKEY 961 kcal **£6.45**

ROAST GAMMON 997 kcal **£6.45**

ROAST LAMB 1,043 kcal **£6.45**



DESSERTS

DIY CHOCOLATE MALLOW SUNDAE 430 kcal **£3.45**
Ice cream, chocolate sauce, mini marshmallows
and chocolates

CHOCOLATE BROWNIE v, gf 473 kcal **£3.45**
with vanilla ice cream and chocolate sauce

VANILLA ICE CREAM v 165 kcal **£3.45**
with wafers and chocolate or strawberry sauce

We take every care and attention to identify
the allergens that are in our ingredients, but
unfortunately it is not possible to guarantee
that any product is 100% free from any
allergen due to our busy kitchen, and the
risk of cross contamination of allergens
and traces during cooking and preparation
processes. Weights stated are approximate
uncooked weights. Calorific information and
nutritional data is taken from information
provided by suppliers and manufacturers
and spot checked using laboratory testing.
Adults need around 2000 kcal a day



Scan the
QR code for
detailed allergen
and calorific
information

