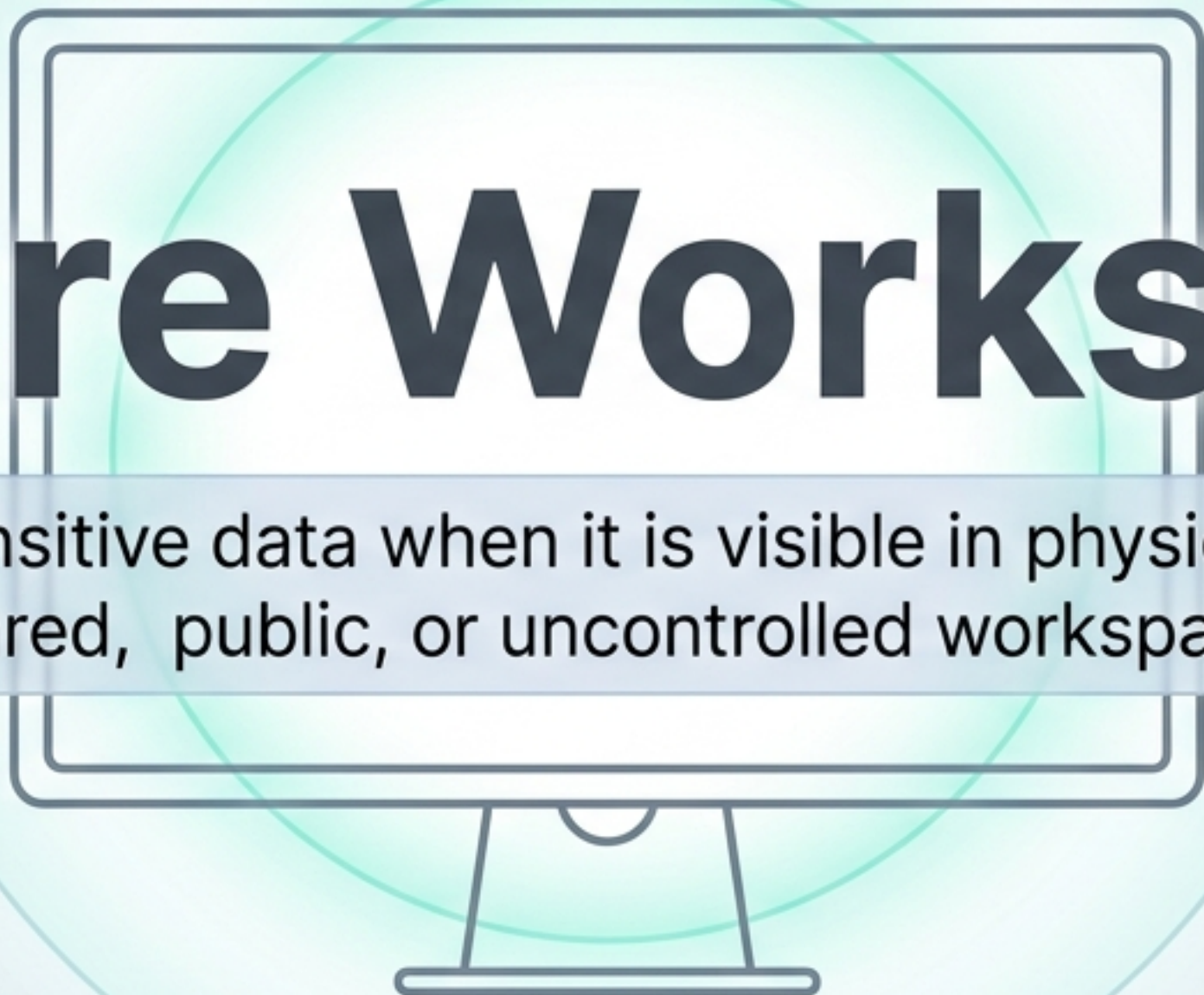


# Secure Workspace

Protect sensitive data when it is visible in physical, remote, shared, public, or uncontrolled workspaces.

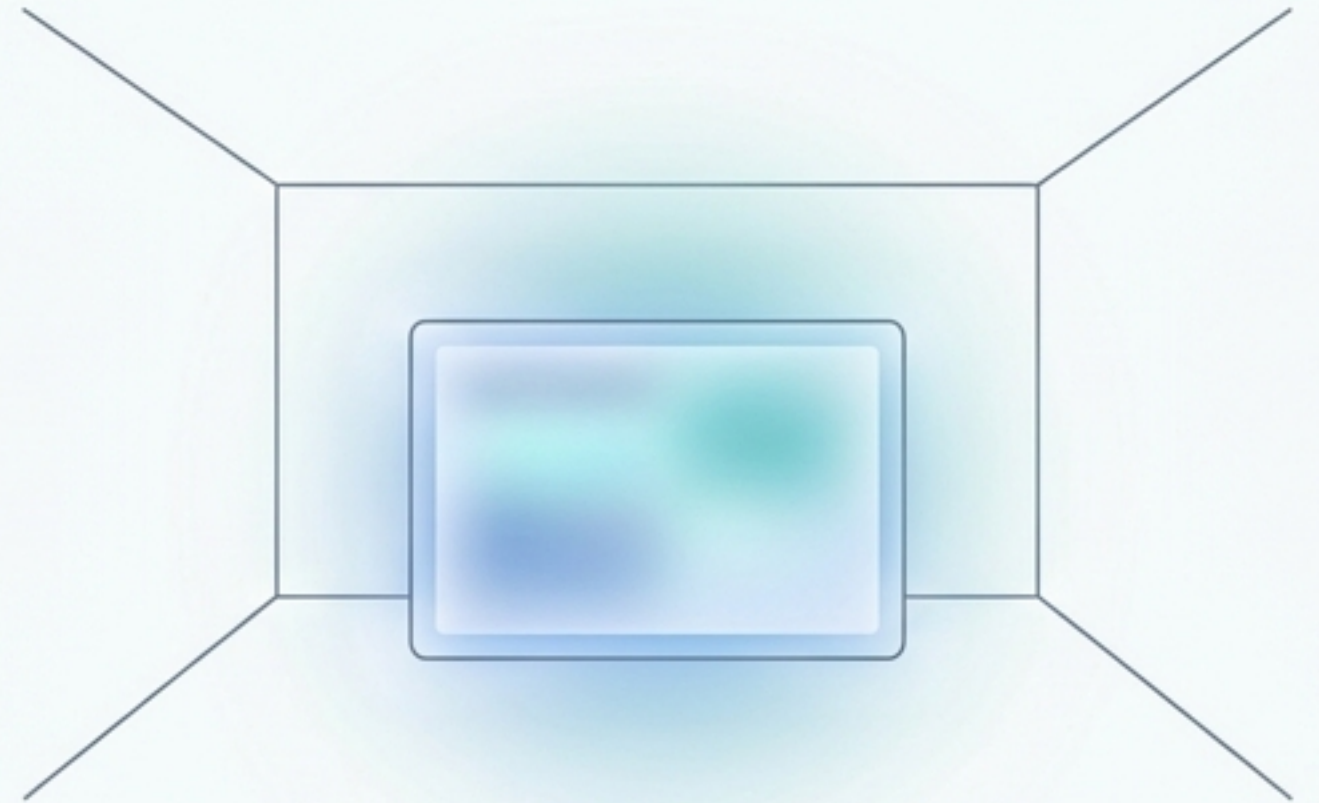


# Access Permission



We invest heavily to protect data in transit and at rest, securing the login and the network. Access is highly controlled.

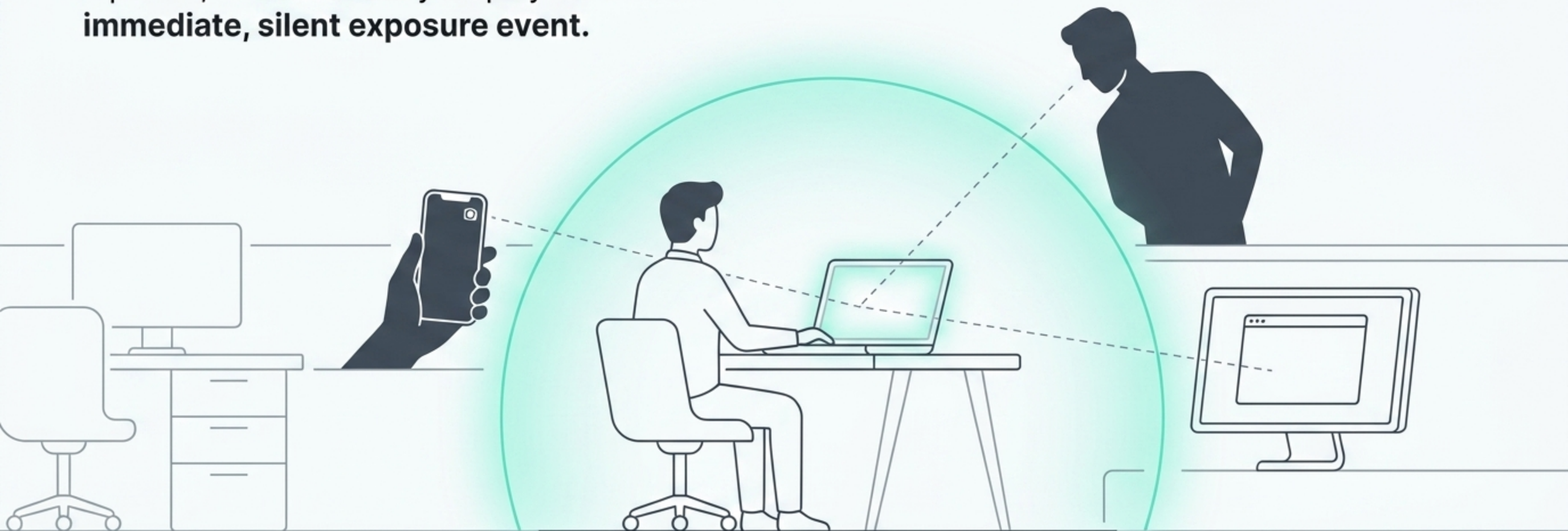
# Exposure Permission



The moment data is opened on a screen, it is fully exposed to the physical world. Access permission does not equal physical safety.

# The Silent Point of Exposure

A user legitimately accesses sensitive information.  
But just outside the screen, a nearby observer,  
a phone, or a secondary display creates an  
**immediate, silent exposure event.**



# Mapping the Uncontrolled Workspace



## Human Risks

Unknown observers viewing the screen.



## Device Risks

Mobile phone lenses and capture devices.



## Environmental Risks

Unattended screens in public or shared spaces.



## Physical Risks

Sensitive paper documents nearby.

Risk is highest when sensitive data is visible near any of these unknown factors.

# Continuous Real-Time Evaluation



# Proportional Workspace Response



## Warn

Issue a gentle notification to the user about workspace surroundings.



## Mask

Obscure sensitive data on the screen from peripheral viewing.



## Lock

Instantly secure the session when severe workspace exposure risk appears.



## Escalate & Preserve

Route the event for review and capture audit-ready evidence of the physical exposure context.

# Transforming Visual Edge Protection into Business Agility



## Security

Protects mission-critical data at the precise moment it is visible, even in highly uncontrolled physical locations.




## Compliance

Transforms physical workspace uncertainty into provable, into provable, governable evidence that satisfies regulatory audits.



## Operations

Empowers organizations to safely embrace remote, hybrid, and shared work without compromising sensitive information.



**Sensitive data exposure starts  
when information is visible.**