

A young child with a shaved head is smiling and sitting in a hospital bed. The child is wearing a white hospital gown. In the background, there is a television mounted on the wall displaying a scene, and various medical equipment is visible. The overall atmosphere is one of hope and resilience.

2,900,000



90%



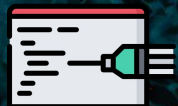
2%

A microscopic view of cancer cells, showing a dense cluster of cells with irregular shapes and sizes, stained in shades of red and orange. The cells are arranged in a disorganized pattern, characteristic of malignant tissue.

“CURRENT TREATMENTS
FOR CANCER ARE NOT GOOD
ENOUGH”

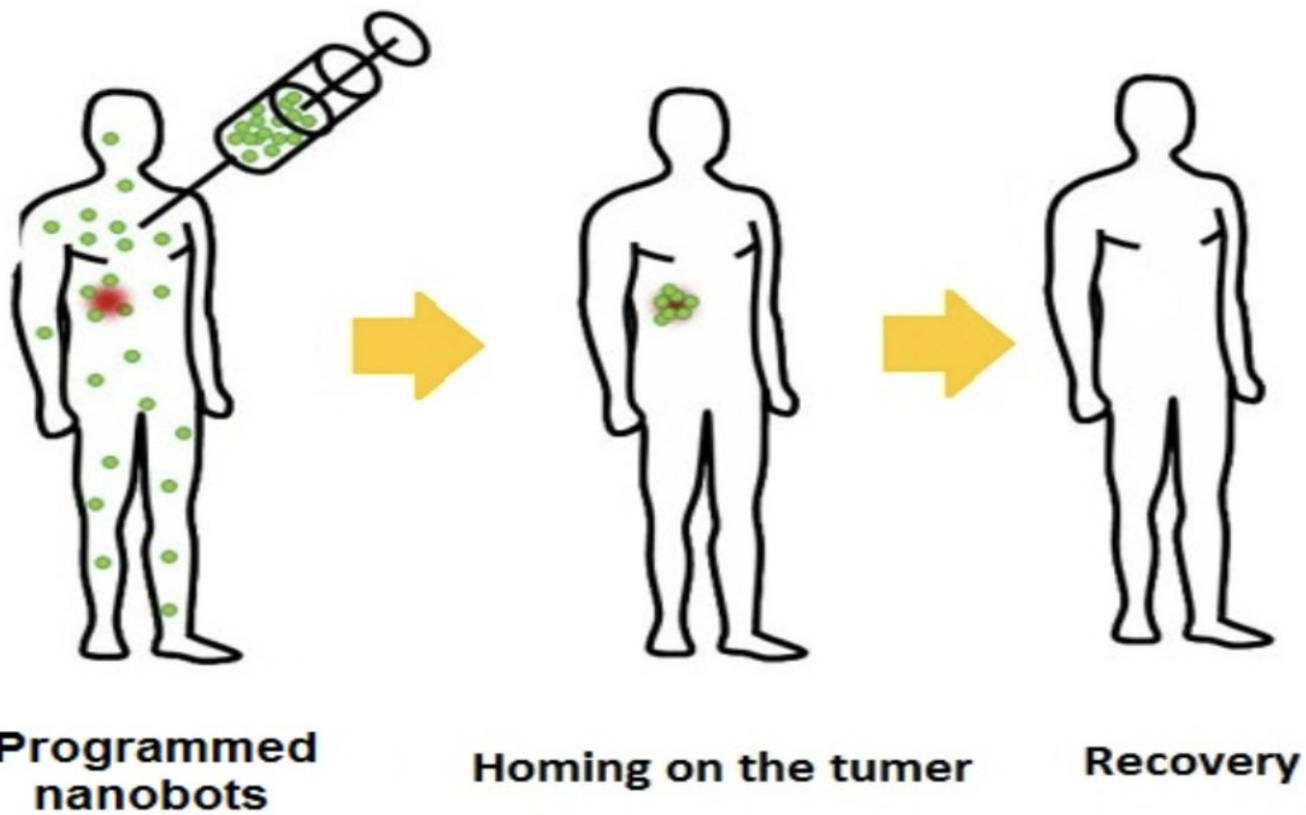
A fluorescence microscopy image showing numerous cells. The cells are stained with two different dyes: one that glows blue and another that glows red. The blue-stained cells appear to have a more granular or textured appearance, while the red-stained cells are smoother. The background is black, making the glowing cells stand out. The word "PROBLEM" is overlaid in white, bold, sans-serif font across the center of the image, with a thick white horizontal line underneath it.

PROBLEM

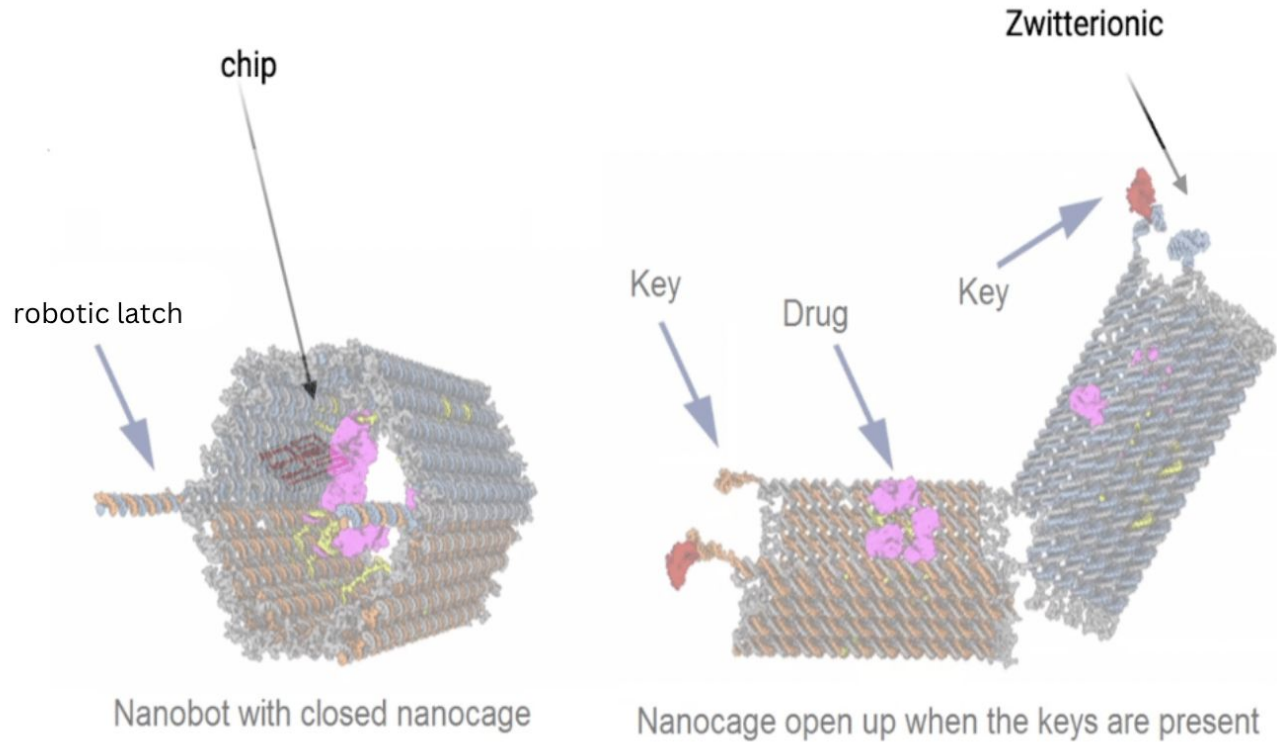


NanoCan

Eradicating cancer. One bot at a time.



STRUCTURE OF NANOBOT





Patient Information

Name:

Email:

Health:

History:



BOT 1

pH:
protein:
health:



BOT 1

pH:
protein:
health:



BOT 2

pH:
protein:
health:



BOT 4

pH:
protein:
health:

Art Director

Ashley Jones

ashleyjones@mysite.com

123-456-7890

[view >](#)

Tech Lead

Don Francis

donfrancis@mysite.com

123-456-7890

[view >](#)

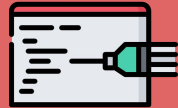
Product Manager

Alexa Young

Product Designer

Robert Rose

6 MONTHS VS 5 MINUTES



NanoCan