



**5.8 million**

# 1B

People suffer from  
neurodegenerative diseases





| **biochemistry**

# fMRI

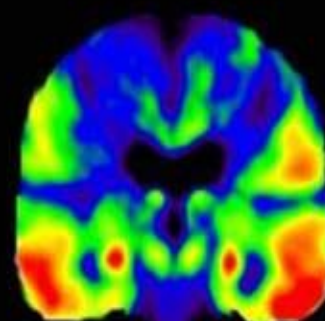
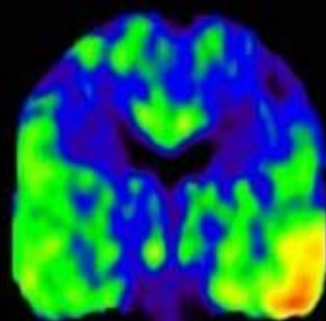
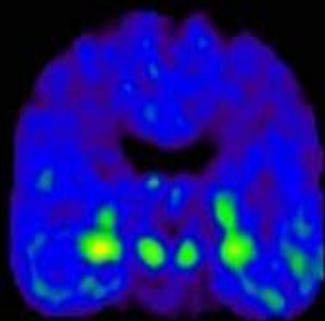


**Normal older adult**  
Low amyloid and tau

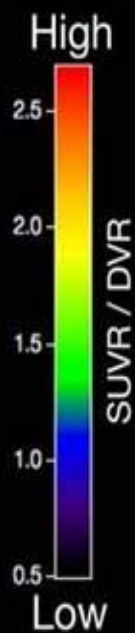
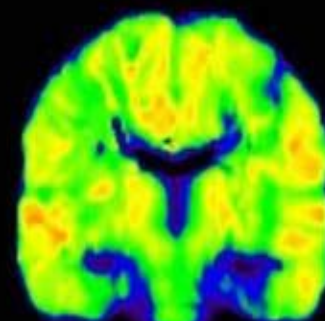
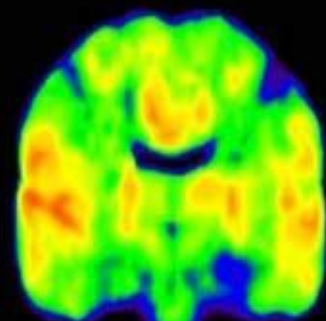
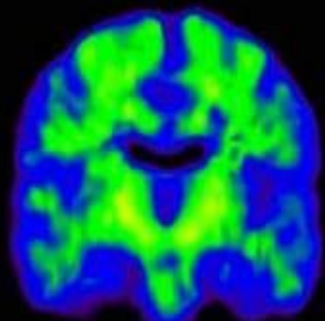
**Normal older adult**  
High amyloid and tau

**AD patient**  
High amyloid and tau

**Tau**



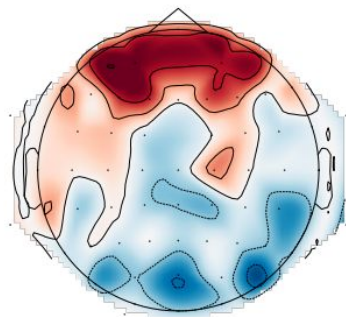
**Amyloid**



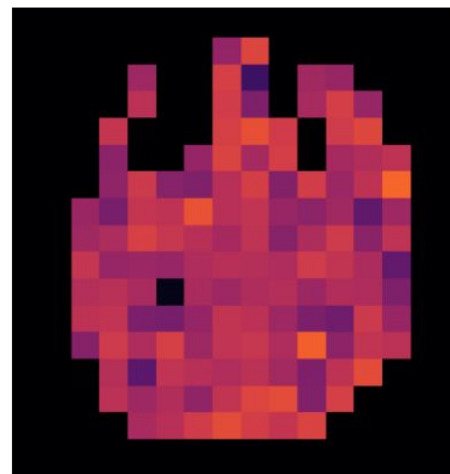
**fMRI  
accuracy**



**EEG**



(a) EEG source localization topography map



(b) fMRI sliced at  $z$  axis

