





A person is sitting on a bed in a dimly lit room, looking out a window with sheer curtains. The scene is bathed in a warm, golden light, suggesting sunrise or sunset. The person's silhouette is visible against the bright window. The text '50%' is overlaid in the center of the image in a large, white, sans-serif font.

50%



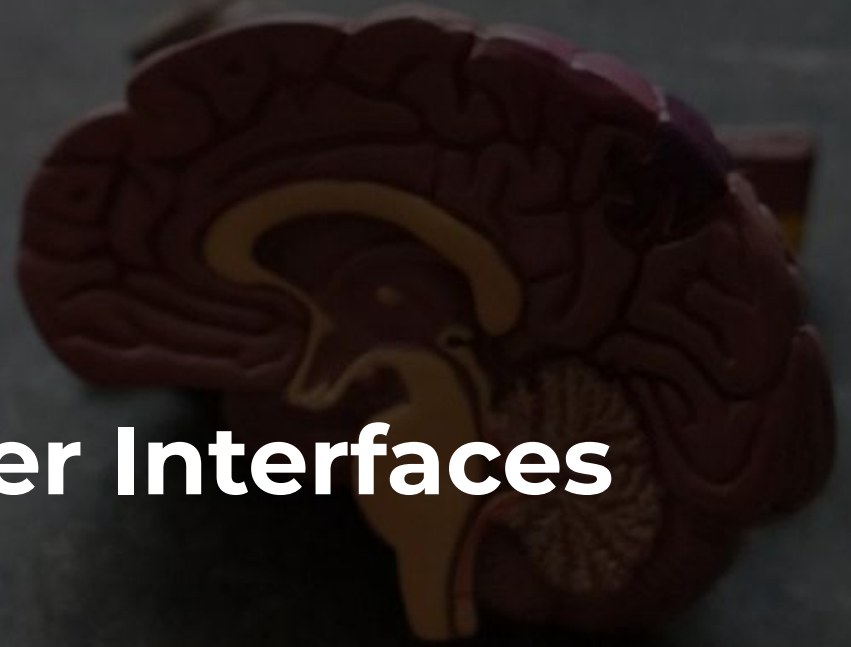
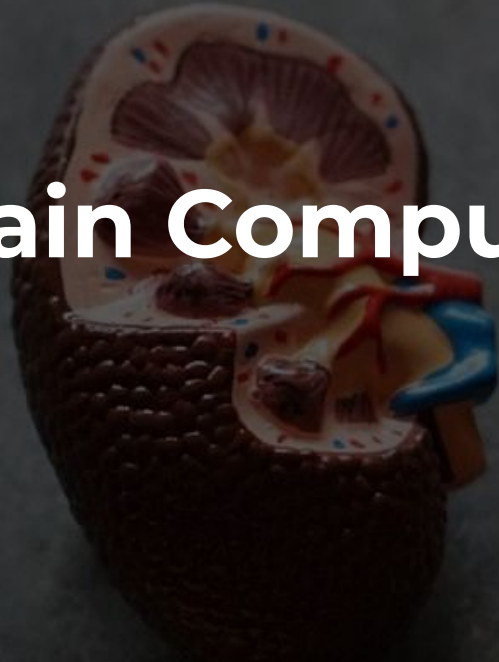
55%

Report Bad Mental Health

Diagnostics



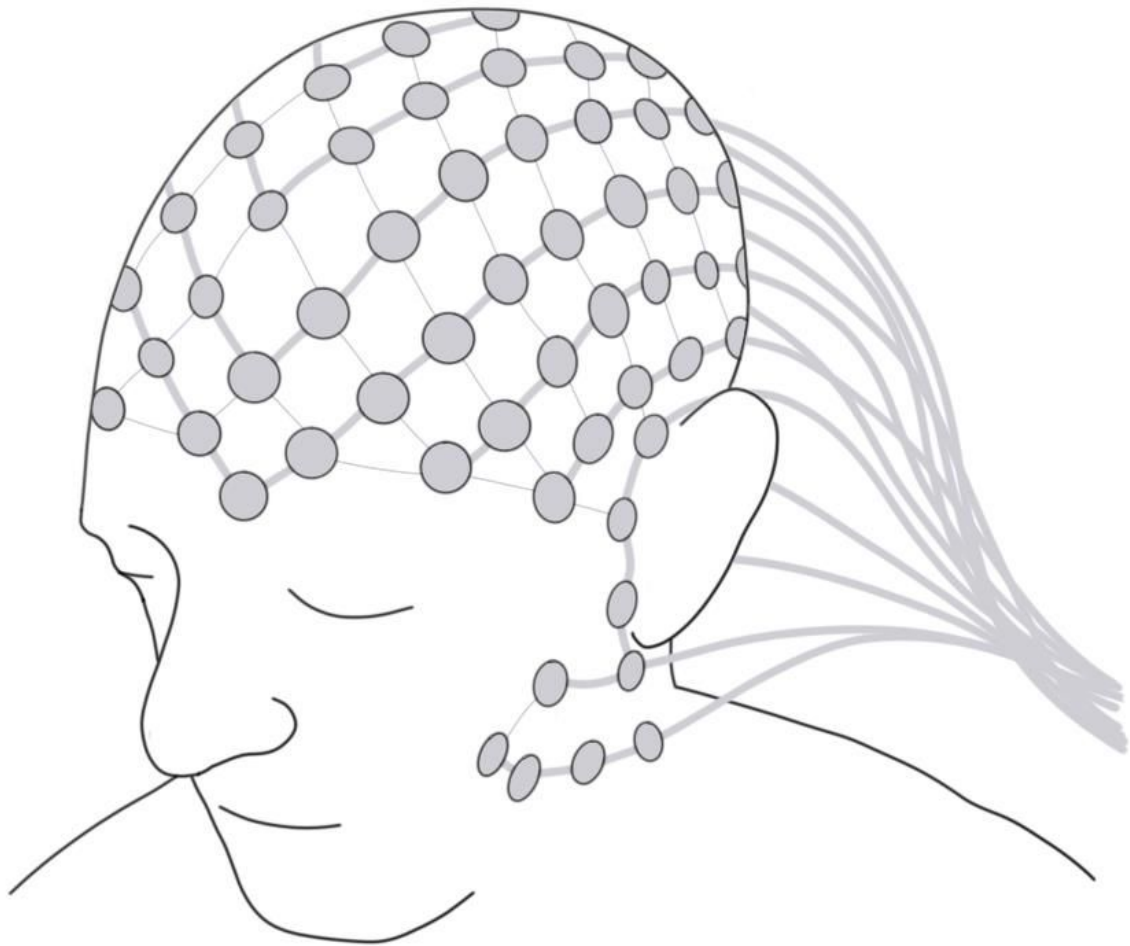
Brain Computer Interfaces

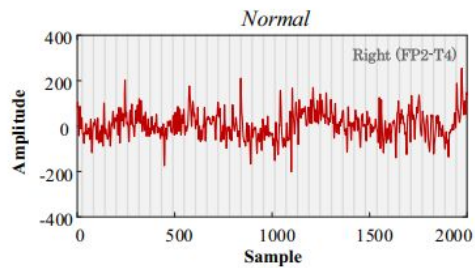
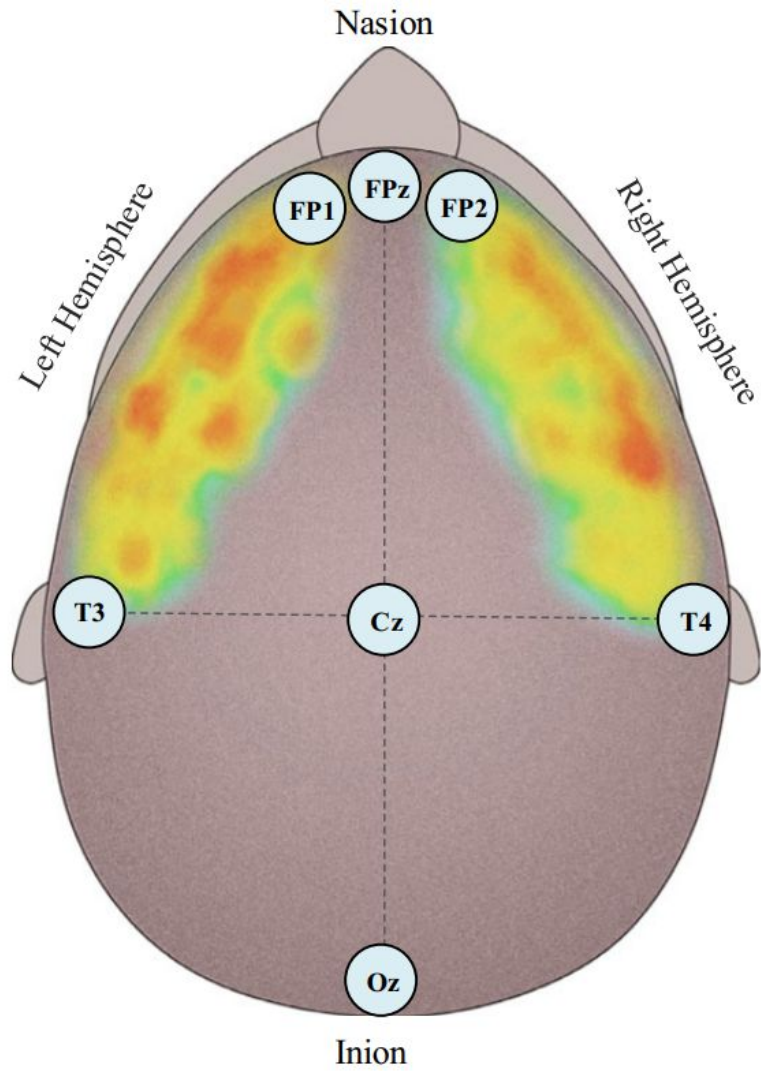


Neurons

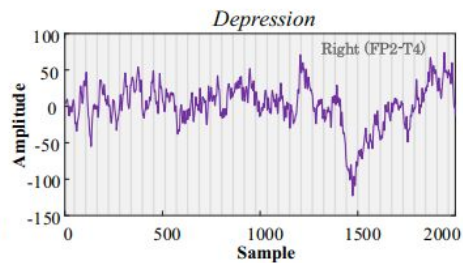


EEG

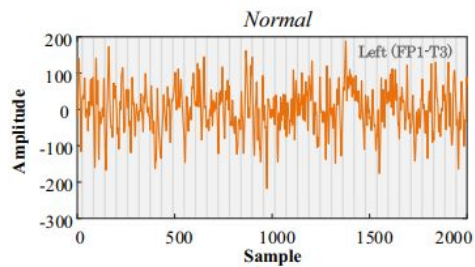




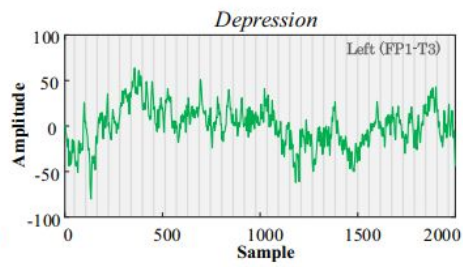
(a)



(b)



(c)



(d)

Ripple App





97%

(Ripple)

The image features a black background with several wavy, ribbon-like lines in shades of purple and grey. The lines are layered and flow across the frame, creating a sense of movement and depth. The text "(Ripple)" is centered in a bold, white, sans-serif font.