

DURO[®] PROFESSIONAL SERIES

Also look for TITAN and DYNAFLO pumps in the CanatureWaterGroup line of pump products! Full colour packaging, literature, a comprehensive catalogue and other marketing material provide a complete package exclusive to Plumbing Professionals.



Pump Promotion Posters: Sump & Wastewater - 57402
(left) Groundwater - 57101 (below)

Deep Well Submersible Pumps 57130

Jet Pumps 57100

Jet Pump Accessories



Mascontrol[®] - Eliminates the pressure tank and switch from a conventional pump setup. It allows the pump to maintain a constant pressure and flow. Mascontrol can be used with either surface or submersible pumps. It also features a built in check valve, run dry protection, dual voltage wiring in either 115V or 230V.



Well Tanks - WaterGroup offers a complete line of Aqua Flo, Well Rite, Jet Rite and Flexlite well tanks available in sizes ranging from 2 Gallons to 119 USGallons.

**Well Rite, Jet Rite and Flexlite brands not available in the US.*

The Best Pumps, The Best Warranties.

All DUROJet Jet Pumps carry a **TWO YEAR WARRANTY.**

Pressure tanks in the jet pump packages carry a **FIVE YEAR WARRANTY** against manufacturing defects.

The Mascontrol carries a **TWO YEAR WARRANTY.**



CanatureWaterGroup's pump product line has a history dating back to 1932 when Pumps & Softeners Ltd., then based out of London, Ontario, manufactured Canada's first electrically powered piston water pumps. Check out our complete line of high quality pumps and water treatment products which are only available through your plumbing professional.



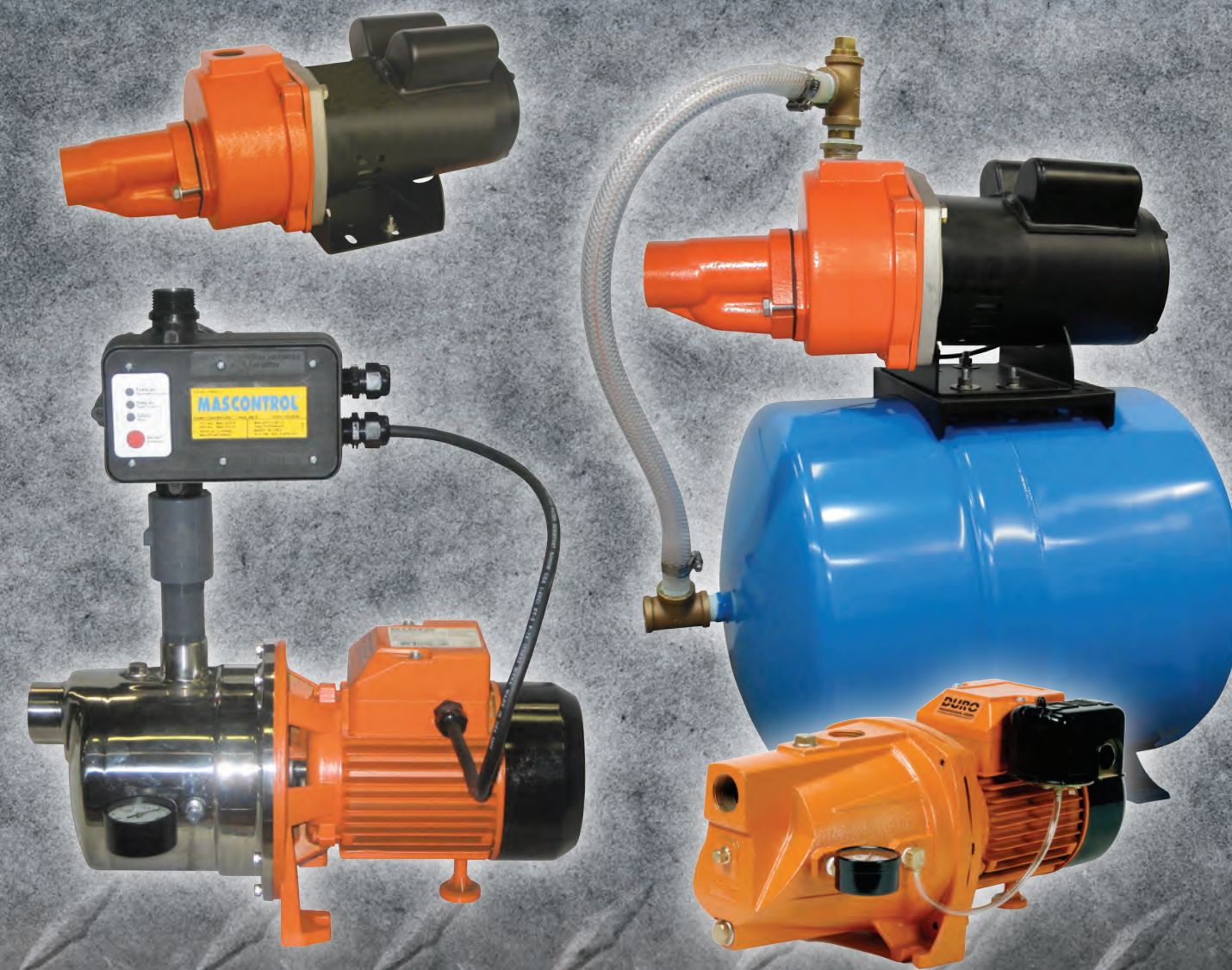
Regina, SK • Cambridge, ON • Whitestown, IN
Houston, TX • Phoenix, AZ • Guadalajara, MX

Toll Free 1-877-288-9888
www.canaturewg.com

#57100 2024-05-28

RUGGED, RELIABLE, EFFICIENT... DUROJET[™]

JET PUMPS



DURO[®] PROFESSIONAL SERIES

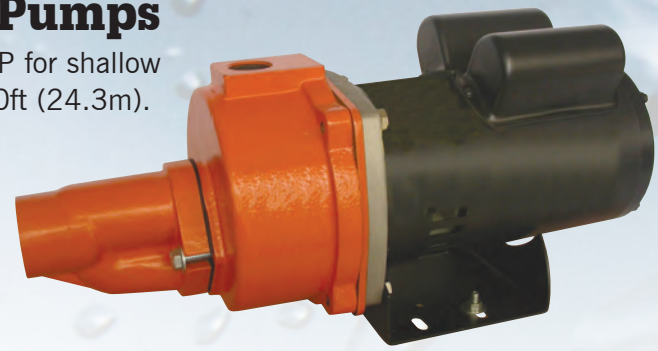


DUROJET™ Convertible Jet Pumps

The DUROJet convertible jet pump is available in 1/2 or 3/4 HP for shallow well applications to 25ft (7.6m) or deep well applications to 80ft (24.3m).

Features of Construction:

- Dual capacitor for high motor starting torque and run
- Easy to switch 115V/230V on the motor
- “Adjustable Differential” pressure switch
- Steel motor housing
- Carbon/ceramic mechanical shaft seal
- Stainless steel motor shaft
- Cast iron seal plate
- 1 inch NPT discharge and 1-1/4 inch suction
- Full colour packaging



Shallow Well Performance

Item #	Model	HP	Lift (ft)	Discharge Pressure in PSI				Shut Off PSI
				30	40	50	60	
6330	DCJ500	1/2	5	14.6	11.5	6.9	3.0	66.0
			15	12.6	10.1	5.5	2.0	65.0
			25	8.3	6.7	4.2	1.1	61.0
6331	DCJ750	3/4	5	19.5	13.5	7.2	1.0	61.0
			15	17.3	11.8	5.9	0.5	60.0
			25	11.5	8.1	4.4		53.0

Deep Well Performance

Item #	Model	HP	Lift in Feet					
			30	40	50	60	70	80
6330	DCJ500	1/2	6	6	5	4	3	2
6331	DCJ750	3/4	3	2	2	1	1	
			Capacity in USGPM at 30 PSI					
6330	DCJ500	1/2	6	6	6	5	4	3
6331	DCJ750	3/4	4	4	3	2	1	
			Capacity in USGPM at 50 PSI					
6330	DCJ500	1/2	6	6	6	5	4	3
6331	DCJ750	3/4	4	4	3	2	1	

For deep well applications, replace the short tube in the ejector assembly to long tube #302922 (sold separately)

DUROJET™ Convertible Jet Pump Packages

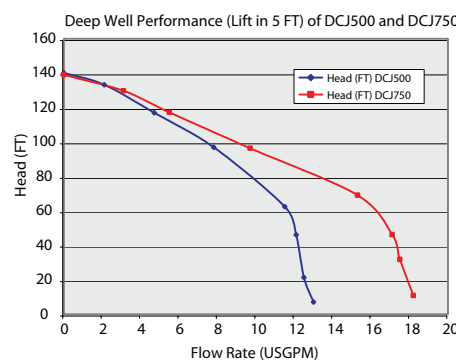
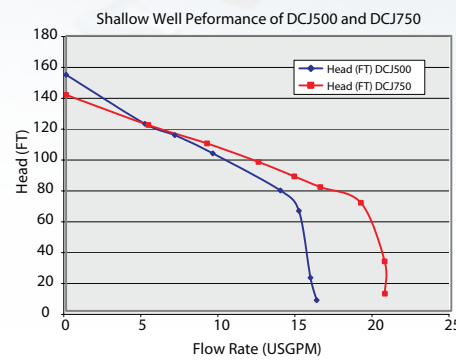
An economical, ready-to-install system for shallow and deep wells. The package comes with the pump mounted on a pre-charged 5.3, 8.5 or 14 U.S. gallon pressure tank. A pressure switch mounted on the pump provides a control to operate the pump.

Features of Construction:

- DUROJet Convertible Jet Pump
- Factory pre-charge pressure tank
- Steel construction with Butyl Water Chamber
- Tank exterior in a polyurethane finish
- Lead-less brass fittings and braided hose connects pump outlet to tank
- 3/4” FNPT threaded outlet connection
- Four different packages available

Item #	HP	Tank Volume in US Gallons	Drawdown in US Gallons Cut-in/Cut-out Pressure in PSI			Shipping Weight Lbs (kgs)
			20 - 40	30 - 50	40 - 60	
6092	1/2	5.3	1.9	1.6	1.4	55 (24.9)
6093	1/2	8.5	3.1	2.6	2.3	55 (24.9)
6094	1/2	14	5.7	4.9	4.1	65 (29.4)
6095	3/4	14	5.7	4.9	4.1	65 (29.4)

For deep well applications, replace the short tube in the ejector assembly to long tube #302922 (sold separately)



DUROJET™ Shallow Well Jet Pumps

These high capacity pumps are designed especially for use on shallow well applications where wells are 25ft (7.6m) deep or less. They are excellent for the farm or cottage, either as a new installation or for an existing system. Models DSW500, 750 and 1000 have a Cast Iron Pump Body and Models DSW500SS, 750SS and 1000SS have a Stainless Steel pump body.

Features of Construction:

- Aluminum die-cast motor housing
- Permanent split capacitor motor with high starting torque
- Built-in thermal overload protection
- “Quick-change” dual voltage switch (115/230 volt)
- “Adjustable Differential” pressure switch
- Cast iron or stainless steel pump body with front drain plug
- Stainless steel motor shaft and seal plate
- Carbon/ceramic mechanical seal
- Self-priming (after housing filled)
- 1 inch NPT suction on DSW500, 750, 1000, DSW500SS models and 1-1/4 inch NPT on DSW750SS and 1000SS models
- 1 inch NPT discharge
- 0 - 100 psi pressure gauge included
- Full colour packaging

Item #	Model #	HP	Suction Lift Depth (feet)	Discharge Pressure in PSI				Max Shut Off PSI
				30	40	50	60	
6060	DSW500	1/2	5	12	8	5	-	62
			10	10	7	4	-	60
			15	9	6	3	-	60
			20	8	5	2	-	59
			25	7	3	0	-	54
6061	DSW750	3/4	5	17	13	8	4	71
			10	14	12	7	3	67
			15	12	11	6	2	65
			20	10	10	5	0	60
			25	8	8	4	0	60
6063	DSW500SS	1/2	5	12	8	5	-	65
			10	11	7	4	-	63
			15	8	5	3	-	60
			20	7	5	2	-	59
			25	6	4	-	-	55
6064	DSW750SS	3/4	5	18	14	8	3	66
			10	15	12	7	2	64
			15	13	11	6	1	61
			20	10	10	5	0	59
			25	8	7	4	0	56



DUROJET™ Shallow Well Jet Pump and Mascontrol® Packages

Our popular DUROJet DSW Series is also available packaged together with the revolutionary Mascontrol. The Mascontrol installed with a DSW pump maintains constant pressure and flow. With this system, no pressure tank should be needed.

Features of Construction:

- DUROJet cast iron or stainless steel pump body models
- “Quick-change” dual voltage switch (115/230 volt)
- Mascontrol maintains constant pressure and flow and includes a built in check valve, dry run protection, dual voltage (115/230 volt) and absorbs water hammer
- Simple installation saves time and space
- Pump and MasControl are certified for use in Canada



Item #	Model Description	Motor HP	Discharge Pressure in PSI				Electrical
			30	40	50	60	
6072	DSW500 Pump w/ MasControl Pkg	1/2 HP	44	28	14	0	115V / 230V
8102	DSW500SS Pump w/ MasControl Pkg	1/2 HP	44	26	12	0	115V / 230V
8103	DSW750SS Pump w/ MasControl Pkg	3/4 HP	53	39	25	12	115V / 230V

Performance when used in Booster Pump application.

DUROJET™ Shallow Well Jet Pump Packages

Shallow Well Jet Pumps are also available in ready to install pump and tank package systems. These packages consist of a pump pre-mounted on a pressure tank. A pressure switch is mounted on the pump to provide control to operate the pump.

Features of Construction:

- DUROJet 1/2 HP Shallow Well Jet Pump
- Factory pre-charge pressure tank
- Steel construction with Butyl Water Chamber
- Tank exterior in a polyurethane finish
- Lead-less brass fittings and braided hose connects pump outlet to tank
- 3/4” FNPT threaded outlet connection
- Five different packages available

Item #	Model Description	Tank Volume in US Gallons	Drawdown in US Gallons Cut-in/Cut-out Pressure in PSI			Shipping Weight Lbs (kgs)
			20 - 40	30 - 50	40 - 60	
6066	DSW500	53	1.9	1.6	1.4	42 (19)
6067	DSW500	8.5	3.1	2.6	2.3	44 (20)
6068	DSW500	14	5.7	4.9	4.1	54 (24)
6071	DSW500SS	8.5	3.1	2.6	2.3	37 (17)
6070	DSW500SS	14	5.7	4.9	4.1	47 (21)

