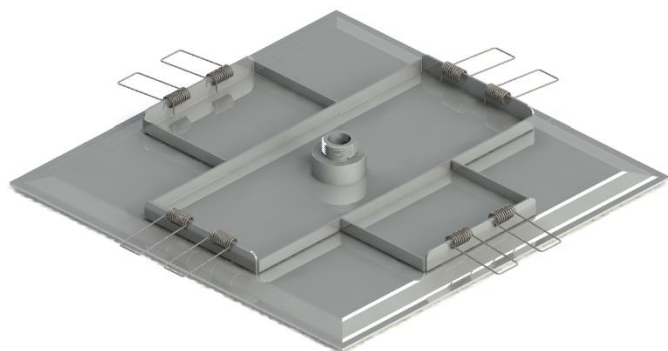


CSH-XX-X-XX

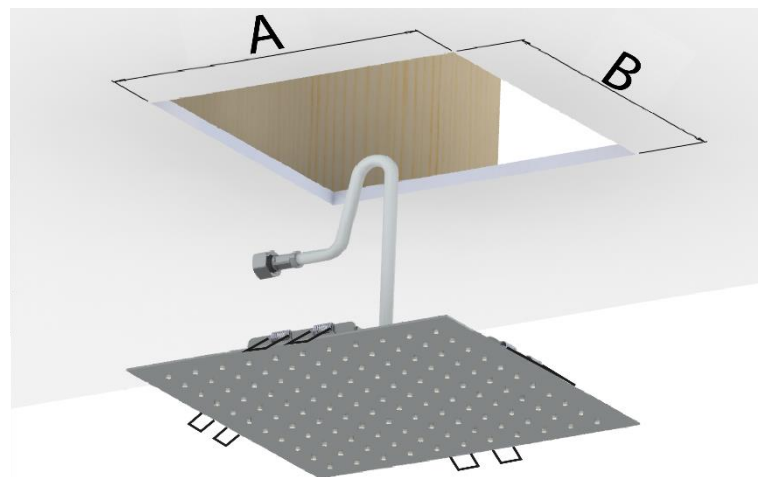
1

ASSEMBLE THE MOUNTING BRACKET ON THE SHOWER HEAD.  
 ASSEMBLER LA BRAQUETTE DE MONTAGE SUR LA TÊTE PLUIE.



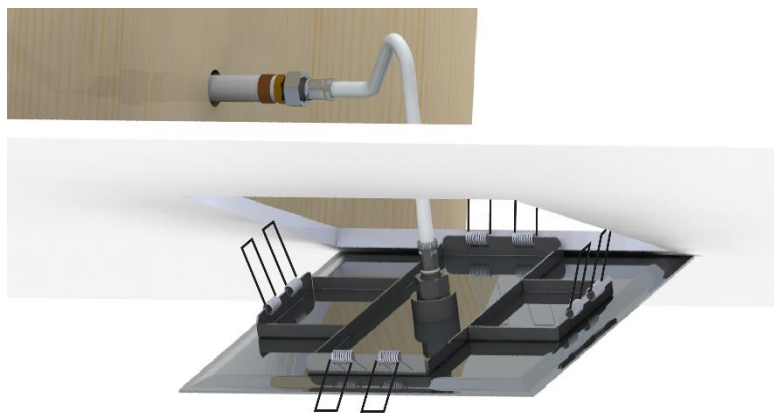
2

CUT THE HOLE (A -B) 1/2" SMALLER THAN THE SHOWER HEAD.  
 COUPER L'OUVERTURE (A — B) DANS LE GYPSE 1/2" PLUS PETIT QUE LA TÊTE PLUIE.



3

CONNECT THE FLEXIBLE HOSE TO THE WATER INLET.  
 CONNECTER LE BOYAU FLEXIBLE À LA PLOMBERIE.



4

INSTALLATION COMPLETED.  
 INSTALLATION COMPLÉTÉ.

