

Introduction

IgG levels of all foals should be measured after first suckling (between 12-24 hours old).

Foals are born with no immunoglobulins (IgG) and must receive adequate antibodies from the mare's colostrum (passive transfer of IgG). Up to 20% of newborn foals experience a partial or total failure of passive transfer of IgG.

These animals are at high risk of infection and serious illness or death. Failure of passive transfer can occur as a result of premature lactation, deficient suckling, malabsorption or low IgG levels in the mare's colostrum.

An IgG test will identify if a failure of passive transfer has occurred by measuring the levels of IgG in the blood. An adequate level of IgG is 800 mg/dl of IgG or greater. Levels less than 400 mg/dl indicate inadequate passive transfer. IgG should be supplemented in foals with less than 400 mg/dl.

A rapid identification of low IgG levels is very important for the early initiation of treatment of immunodeficient foals.

Reference

McGuire TC, Crawford TB, Hallowel AL, Macomber LE *Failure of colostrum immunoglobulin transfer as an explanation for most infections and deaths in neonatal foals* JAVMA 170, 1302 (1977).

Storage

The entire kit and components should be stored at room temperature in order to have the labelled shelf life.

Sample Preparation

Collect ~ 1-2 ml of whole blood using a syringe or a needle and collection tube containing EDTA or heparin. Sample can be stored in refrigerator for up to 7 days.

Kit Components

- 5 or 10 pouches containing test device & desiccant
- 5 or 10 sample diluent bottles
- 1 Buffer dropper bottle B
- 10 or 20 tips
- * Needed but sold separately 10 uL pipetter

Intended for veterinary use only. Not for human use.
The manufacturer warrants the kit for its intended use.
BioMetallics' liability is limited to the value of the kit.



Immuno-Chek G

Foal IgG Test Kit

QUICKLY IDENTIFY

IMMUNODEFICIENT FOALS

NUMBER WITH CUBE

Immuno-Chek G is an easy to use flow test for semi-quantitative detection of immunoglobulin G (IgG) in a drop of equine whole blood.



BioMetallics, Inc.

1-800-999-1961 or 1-609-275-0133

www.targetvet.com

IMMUNO-CHEK FOAL TEST FOR WHOLE BLOOD OR SERA SAMPLES - QUANTITATIVE

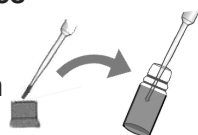
TEST PREPARATION

Label one Sample Dilution bottle with Foal ID. Collect 1-2 ml anticoagulated whole blood sample (heparin or EDTA). MIX blood sample by inverting 3 times. Cassette and Push Buffer must be at Room Temp; warm with hand for 5-10 min if cold.

1 Transfer 10 μ L whole blood sample (from stopper as shown) using a pipette (SLOWLY squeeze bulb to fill only thin long plastic tip) into an uncapped Sample Dilution bottle.

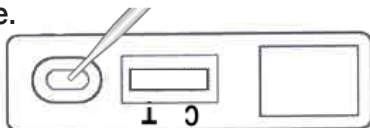
Squeeze the plastic bulb several times to mix solution.

Or, for sera, add 5 μ L Sera to dilution vial and mix.

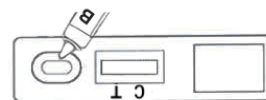


2 Recap Sample Dilution bottle. Mix sample by inverting 4x. Let it stand while preparing cassette. Remove the cassette from the foil pouch.

3 Using the SAME pipette, transfer 10 μ L of diluted sample from Sample Dilution bottle into the cassette.



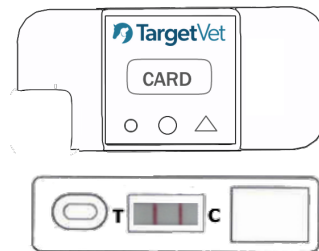
4 Add 3 drops from **Dropper Bottle B** to the cassette.



Wait for liquid to flow into cassette.

5 Place holder over the cassette so it is flat.

Place Cube correctly on top of holder (with Cube notch in holder notch.)



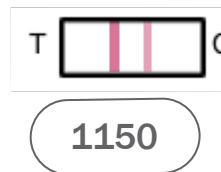
6 Press button 1X. - displays "LAST" Reading. Press button 2nd X, displays ON. Press & "HOLD" button for 3 s; until displays CARD.

7 Place CARD on top of Cube reader; Timer displays 10:00, 9:59...

Immuno-Chek G
Lot 1151

Timer beeps at 10 min. **SAVES LAST** reading. (Press button 1X to see Last reading.)

8 Cassette lines are analyzed. IgG conc (mg/dL) is displayed on screen.



>800 Very Good Transfer
400 Partial Transfer
200 Total Failure

A Control line will always appear in every valid cassette.