

2024 OUTBACK

PRODUCT GUIDE



2024 OUTBACK NEW OR REVISED FEATURES



ALL TRIMS

- EyeSight® features: Wide-angle mono camera

ONYX

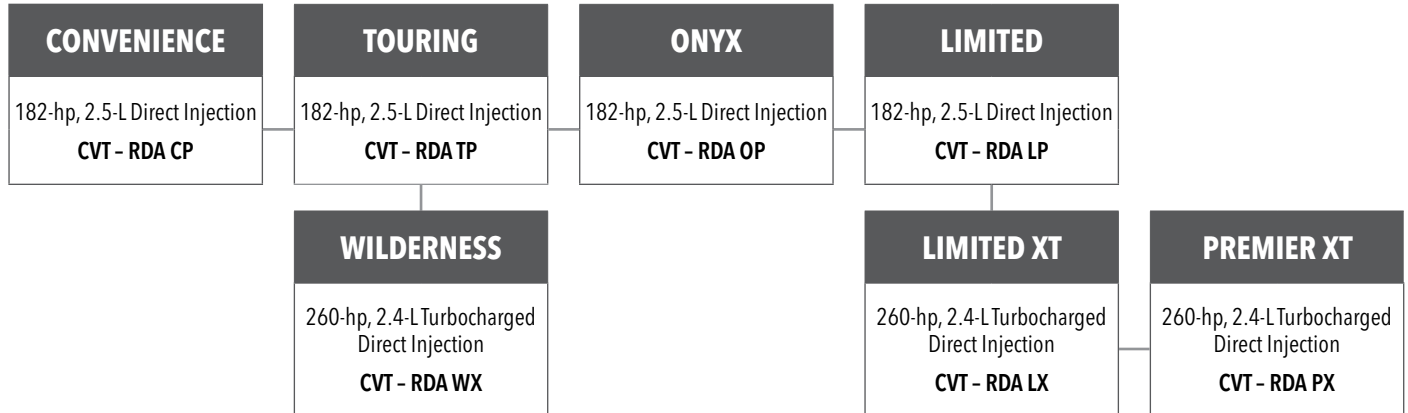
- Speakers: Premium 12-speaker Harman Kardon® system with subwoofer and amplifier

WILDERNESS

- Facelift redesign (front bumper and grille)
- Speakers: Premium 12-speaker Harman Kardon® system with subwoofer and amplifier
- Deleted: Engine and rear differential skid plates

Product details based on the latest information available at the time of publication and are subject to change without notice or incurring obligation. © 2023 Subaru Canada, Inc.

2024 OUTBACK MODEL LINEUP



CONVENIENCE

Airbag (driver): Dual-stage deployment with seat position sensor

Airbag (front passenger): Dual-stage deployment with occupant detection system

Airbag (front passenger): Seat cushion

Airbag (front seats): Side-impact

Airbag: Driver's knee

Airbag: Side curtain

Antenna: Shark fin (roof-mounted)

Audio system: 7.0-inch touch-screen infotainment system (dual)

Audio system: Apple CarPlay® and Android Auto® functionality

Audio system: Integrated steering wheel audio controls

Audio system: SiriusXM® satellite radio with Travel Link® (free 3-month trial subscription included)

Body (rocker panels): Lower cladding, black

Body (wheel arches): Cladding, black

Brakes (front): Ventilated discs, dual-piston calipers

Brakes (rear): Ventilated discs, single-piston calipers

Brakes: 4-channel/4-sensor/4-wheel Anti-lock

Brake System (ABS)

Brakes: Active torque vectoring

Brakes: Auto Vehicle Hold (AVH)

Bumpers: Lower cladding, black

Camera: Rearview with dynamic guide lines and rear washer

Cargo access: Rear liftgate

Cargo area: Tonneau cargo cover (pop-up functionality)

Child safety: ISO-FIX/LATCH anchor system (rear seat)

Child safety: Rear door locking system

Climate control: Air conditioning with air filtration

Climate control: Automatic

Connectivity: Bluetooth® mobile phone connectivity with voice-activation and Bluetooth® streaming audio

Connectivity: USB-A (x1) port in centre console

Connectivity: USB-A (x1) and USB-C (x1) in rear

Door handles: Body colour

Door locks: Automatic

Door mirrors: Gloss black

Door mirrors: Integrated LED turn signals

Door mirrors: Power-adjustable, foldable and heated

Drivetrain feature: Hill Descent Control

Drivetrain feature: Hill start assist

Drivetrain feature: X-MODE®

Drivetrain: Subaru Symmetrical Full-Time All-wheel Drive system (AWD)

Driving assist systems (advanced): EyeSight® driver assist technology

Driving assist systems: Cruise control

Driving assist systems: Traction Control System (TCS)

Driving assist systems: Vehicle Dynamics Control (VDC)

Engine layout: Horizontally-opposed, 4-cylinder

Engine: 182-hp, 2.5-L Direct Injection, SUBARU BOXER®

EyeSight® features: Wide-angle mono camera

Fog lights: LED

Fuel Door: Push-open, electronically lockable

Gear selector: Soft-touch shift boot

Grille: Active grille shutter

Headlights: Fully-automatic

Headlights: LED Daytime Running Lights (DRL)

Headlights: LED steering-responsive (SRH) with

High-Beam Assist (HBA)

Hood: Aluminum

Hood: Sound insulator

Instruments: 4.2-inch colour multi-information display (gauge cluster integrated)

Instruments: EyeSight® Assist Monitor

Interior lighting: Welcome lighting

Parking brake: Electronic with push-button actuation

Power outlet: 12V in cargo area

Power outlet: 12V in rear console

Power outlet: 12V in glove box

Roof rails: Raised profile with integrated cross-bars and tie-down holes

Seat (driver): Power-adjustable (10-way including 2-way lumbar)

Seat (front passenger): Manually adjustable (4-way)

Seating capacity: 5-passengers

Seating surfaces: Cloth

Seats (front): Centre console armrest

Seats (front): Heated, three settings

Seats (rear): Contoured bench with one-touch flat-folding 60/40-split seatbacks

Seats (rear): Folding centre armrest with cup holders

Seats (rear): Reclining seatback

Security: Keyless entry system with panic alarm

Speakers: 4-speaker system

Spoiler: Roofline, integrated brake light

Steering wheel: Heated

Steering wheel: Leather-wrapped

Steering wheel: Tilt-adjustable and telescoping

Storage: Overhead sunglasses compartment

Structure: Advanced ring-shaped reinforcement frame

Structure: Subaru Global Platform (SGP)

Suspension (front): MacPherson-type struts with coil springs and stabilizer bar

Suspension (rear): Double wishbone with coil springs and stabilizer bar

Suspension: 4-wheel, fully independent

Tail lights: LED combination

Transmission feature: CVT oil cooler

Transmission feature: Manual mode with paddle shift controls

Transmission modes: Normal; 8-speed manual mode

Transmission: Lineartronic® CVT

Visor: Dual, sliding with illuminated mirrors

Wheels: 17" x 7" steel with wheel covers

Window (rear): Defogger with timer

Windows (front and rear): Power operated

Windows (front): Auto up/down

Windows (rear and cargo areas): Privacy tinted glass

Windshield: Laminated UV protection

Wiper (rear window): Intermittent and continuous mode with washer

Wipers (windshield): Variable intermittent with washer, headlight-linked

2024 OUTBACK MODEL LINEUP

TOURING | Includes all items on Convenience and adds/upgrades:

Audio system: 11.6-inch tablet-style touch-screen infotainment system	Services (free 3-year trial subscription included)	Rearview mirror: Auto-dimming with HomeLink® and compass
Audio system: Wireless Apple CarPlay® and Android Auto® functionality	Connectivity: USB-A (x1) and USB-C (x1) ports in front	Security: Proximity key with push-button start
Cargo access: Rear liftgate, power (hands-free) with memory function and lock switch	Connectivity: Wireless phone charger in centre console	Speakers: 6-speaker system
Cargo area: Protective cargo tray	Door handles (interior): Chrome	Driving assist systems (advanced): Subaru Rear/Side Vehicle Detection (SRVD)
Climate control: Automatic, dual-zone	Door mirrors: Auto-dimming with approach lighting	Sunroof: Power-tilting and sliding with sunshade
Climate control: Humidity sensor	Driving assist systems (advanced): Reverse Automatic Braking (RAB)	Wheels: 17" x 7" aluminum alloy, split 5-spoke, two-tone with machined finish
Climate control: Rear vents (centre console)	EyeSight® features: Automatic Emergency Steering	Windows (front and rear): Auto up/down
Connected car system: SUBARU STARLINK® Connected	Gear selector: Leather-wrapped	Windshield: Wiper de-icer
	Interior lighting: Cargo area light, LED	
	Interior lighting: Tailgate mounted light, LED	

ONYX | Includes all items on Touring and adds/upgrades:

Accent stitching: Green and silver	Floor mats: All-weather rubber liner	Speakers: Premium 12-speaker Harman Kardon® system with subwoofer and amplifier
Badging (rear): Gunmetal	Grille: Gloss black accents	Spoiler: Roofline, integrated brake light, gloss black
Bumper (rear): Step pad, black	Instrument panel: Silver trim accents	Storage: Seatback pockets (front), multi-purpose pocket
Cargo area: Additional cargo hooks	Interior trim surfaces: Soft-touch	Tires: 225/60 R18
Dashboard: Silver trim accents	Pedals: Aluminum alloy	Wheels: 18" x 7" aluminum alloy, 10-spoke, gunmetal finish
Doors: Silver trim accents	Seating surfaces: All-weather soft-touch	Window trim: Black
Drivetrain feature: X-MODE® (dual-function)	Seats (rear outboard): Heated, two settings	

LIMITED | Includes all items on Touring and adds/upgrades:

Interior trim surfaces: Soft-touch	Doors: Gloss black trim accents	Seat (driver's): Power-adjustable (12-way including 4-way lumbar)
Audio system: 11.6-inch tablet-style touch-screen infotainment system with GPS navigation	Door mirrors: Passenger-side reverse tilt	Seat (front passenger): Power-adjustable (8-way)
Audio system: What3words navigation functionality	Driving assist systems (advanced): DriverFocus® Distraction Mitigation System (DMS)	Seating surfaces: Leather
Audio system: SiriusXM® satellite radio with Travel Link® and Traffic (free 3-month trial subscription included)	Seat (driver's): Cushion length adjustment (manual)	Seats (rear outboard): Heated, two settings
Bumpers: Lower cladding, black with silver accents	Instrument panel: Silver trim accents	Storage: Seatback pockets (front), multi-purpose pocket
Dashboard: Silver trim accents	Speakers: Premium 12-speaker Harman Kardon® system with subwoofer and amplifier	Tires: 225/60 R18
Doors: Silver trim accents	Seat (driver's): Memory settings with exterior mirror synchronization, two position	Wheels: 18" x 7" aluminum alloy, 10-spoke, two-tone with machined finish

Product details based on the latest information available at the time of publication and are subject to change without notice or incurring obligation. © 2023 Subaru Canada, Inc.

2024 OUTBACK MODEL LINEUP

WILDERNESS | Includes all items on Touring and adds/upgrades:

Accent stitching: Anodized copper
 Badging (front doors): Wilderness
 Badging (rear): Gunmetal
 Badging (rear): Wilderness
 Body (wheel arches): Wilderness design cladding, black
 Bumpers: Wilderness design, black with anodized copper finish tow hook covers
 Camera: Front-view with guide lines
 Cargo area: Additional cargo hooks
 Cargo area: Wilderness design protective cargo tray
 Dashboard: Gunmetal trim accents
 Door handles (interior): Black
 Door mirrors: Black
 Doors: Gunmetal trim accents
 Drivetrain feature: X-MODE® (enhanced dual-function)
 Drivetrain: Short ratio transfer and rear differential gearing

Engine: 260-hp, 2.4-L Turbocharged Direct Injection, SUBARU BOXER®
 Exhaust: Dual-tip, hidden
 Floor mats: All-weather rubber liner, Wilderness logo
 Fog lights: Hexagonal LED
 Gauges: Analog with white illumination, anodized copper finish bezel and Subaru Wilderness graphics
 Grille: Matte black accents
 Headliner: Black
 Hood: Decal, matte black
 Instrument panel: Anodized copper finish trim accents
 Instrument panel: Gunmetal trim accents
 Interior trim surfaces: Soft-touch
 Roof rails: Raised profile with tie-down holes, high payload capacity
 Roof rails: Anodized copper finish accents
 Seating surfaces: All-weather soft-touch with geometric pattern

Seats (front): Embossed Wilderness logo on headrests
 Seats (rear outboard): Heated, two settings
 Seats (rear): All-weather seatback material
 Skid plate: Lower front, aluminum
 Speakers: Premium 12-speaker Harman Kardon® system with subwoofer and amplifier
 Steering wheel: Anodized copper finish trim accents
 Storage: Seatback pockets (front), multi-purpose pocket
 Structure: Towing access points (2 front, 2 rear)
 Suspension: Off-road tuned
 Tire (spare): Full-size, 225/65 R17
 Tires: Yokohama® Geolandar A/T
 Tires: All-Terrain
 Wheels: 17" x 7" aluminum alloy, 6-spoke, with matte black finish
 Window trim: Black

LIMITED XT | Includes all items on Limited and adds/upgrades:

Badging (rear): XT
 Exhaust: Dual-tip, hidden

Engine: 260-hp, 2.4-L Turbocharged Direct Injection, SUBARU BOXER®

Floor mats: Carpet, embroidered Outback XT logo

PREMIER XT | Includes all items on Limited XT and adds/upgrades:

Cargo area: Additional cargo hooks
 Camera: Front-view with guide lines
 Audio system: AM/FM/CD/MP3/WMA supported
 Audio system: Single disc CD player in centre armrest
 Door handles: Chrome

Door mirrors: Power-adjustable, power-folding and heated
 Door mirrors: Satin chrome
 Floor mats: Carpet, embroidered Outback XT logo
 Rearview mirror: Smart with HomeLink® and compass
 Roof rails: Silver accents

Seating surfaces: Leather, genuine Nappa
 Seats (front): Ventilated, three settings
 Steering wheel: Leather-wrapped, premium

Product details based on the latest information available at the time of publication and are subject to change without notice or incurring obligation. © 2023 Subaru Canada, Inc.

2024 OUTBACK VEHICLE SPECIFICATIONS

		CP	TP	OP	LP	WX	LX	PX
ENGINE								
Engine:	182-hp, 2.5-L Direct Injection, SUBARU BOXER®	●	●	●	●	-	-	-
Engine:	260-hp, 2.4-L Turbocharged Direct Injection, SUBARU BOXER®	-	-	-	-	●	●	●
Engine layout:	Horizontally-opposed, 4-cylinder	●	●	●	●	●	●	●
Valve mechanism:	16-valve DOHC with Variable Valve Timing (VVT)	●	●	●	●	●	●	●
Bore x stroke (mm):	94.0 x 86.0	-	-	-	-	●	●	●
Bore x stroke (mm):	94.0 x 90.0	●	●	●	●	-	-	-
Displacement (cc):	2,387	-	-	-	-	●	●	●
Displacement (cc):	2,498	●	●	●	●	-	-	-
Intake system:	Turbocharged & intercooled	-	-	-	-	●	●	●
Intake system:	Natural aspiration	●	●	●	●	-	-	-
Fuel system:	Direct fuel injection with electronic throttle control	●	●	●	●	●	●	●
Compression ratio:	10.6	-	-	-	-	●	●	●
Compression ratio:	12.0	●	●	●	●	-	-	-
Boost pressure (max) (psi):	14.5	-	-	-	-	●	●	●
Output (max):	182 hp @ 5,800 rpm	●	●	●	●	-	-	-
Output (max):	260 hp @ 5,600 rpm	-	-	-	-	●	●	●
Torque (max) (lb-ft):	176 lb-ft @ 4,400 rpm	●	●	●	●	-	-	-
Torque (max) (lb-ft):	277 lb-ft @ 2,000-4,800 rpm	-	-	-	-	●	●	●
Max RPM (tachometer redline):	6,000	●	●	●	●	●	●	●
Fuel octane rating (minimum/recommended) (AKI):	87	●	●	●	●	●	●	●
Emissions:	Tier3 Bin30/LEV3 SULEV30	●	●	●	●	-	-	-
Emissions:	Tier3 Bin50/LEV3 ULEV50	-	-	-	-	●	●	●

TRANSMISSION								
Differential (centre):	Electronically controlled multi-plate transfer clutch	●	●	●	●	●	●	●
Differential (Rear):	Standard open-type	●	●	●	●	●	●	●
Drivetrain feature:	Hill start assist	●	●	●	●	●	●	●
Drivetrain feature:	X-MODE®	●	●	-	●	-	●	●
Drivetrain feature:	X-MODE® (dual-function)	-	-	●	-	-	-	-
Drivetrain feature:	X-MODE® (enhanced dual-function)	-	-	-	-	●	-	-
Drivetrain feature:	Hill Descent Control	●	●	●	●	●	●	●
Drivetrain:	Subaru Symmetrical Full-Time All-wheel Drive system (AWD)	●	●	●	●	●	●	●
Drivetrain:	Short ratio transfer and rear differential gearing	-	-	-	-	●	-	-
Transmission feature:	Gear position display	●	●	●	●	●	●	●
Transmission feature:	Lock-up torque converter	●	●	●	●	●	●	●
Transmission feature:	CVT oil cooler	●	●	●	●	●	●	●
Transmission feature:	Manual mode with paddle shift controls	●	●	●	●	●	●	●
Transmission feature:	Transmission shift lock	●	●	●	●	●	●	●
Transmission modes:	Normal; 8-speed manual mode	●	●	●	●	●	●	●
Transmission:	Lineartronic® CVT	●	●	●	●	-	-	-
Transmission:	High-torque Lineartronic® CVT	-	-	-	-	●	●	●

Product details based on the latest information available at the time of publication and are subject to change without notice or incurring obligation. © 2023 Subaru Canada, Inc.

2024 OUTBACK VEHICLE SPECIFICATIONS

		CP	TP	OP	LP	WX	LX	PX
CHASSIS								
Brakes (front):	Ventilated discs, dual-piston calipers	●	●	●	●	●	●	●
Brakes (rear):	Ventilated discs, single-piston calipers	●	●	●	●	●	●	●
Brakes:	Auto Vehicle Hold (AVH)	●	●	●	●	●	●	●
Brakes:	Active torque vectoring	●	●	●	●	●	●	●
Brakes:	Brake override system	●	●	●	●	●	●	●
Brakes:	Brake assist system	●	●	●	●	●	●	●
Brakes:	4-channel/4-sensor/4-wheel Anti-lock Brake System (ABS)	●	●	●	●	●	●	●
Brakes:	Electronic Brake-force Distribution (EBD)	●	●	●	●	●	●	●
Brakes:	Power-assisted, dual-diagonal system	●	●	●	●	●	●	●
Parking brake:	Electronic with push-button actuation	●	●	●	●	●	●	●
Steering:	Speed-sensitive, variable gear ratio, electric-assisted rack-and-pinion	●	●	●	●	●	●	●
Structure:	Advanced ring-shaped reinforcement frame	●	●	●	●	●	●	●
Structure:	Dual side-impact door beams	●	●	●	●	●	●	●
Structure:	Energy-absorbing crumple zones (front and rear)	●	●	●	●	●	●	●
Structure:	Subaru Global Platform (SGP)	●	●	●	●	●	●	●
Structure:	Towing access points (2 front, 2 rear)	-	-	-	-	●	-	-
Structure:	Towing access points (1 front, 1 rear)	●	●	●	●	-	●	●
Suspension (front):	MacPherson-type struts with coil springs and stabilizer bar	●	●	●	●	●	●	●
Suspension (rear):	Double wishbone with coil springs and stabilizer bar	●	●	●	●	●	●	●
Suspension:	4-wheel, fully independent	●	●	●	●	●	●	●
Suspension:	Off-road tuned	-	-	-	-	●	-	-
SAFETY AND SECURITY								
Airbag (driver):	Dual-stage deployment with seat position sensor	●	●	●	●	●	●	●
Airbag (front passenger):	Dual-stage deployment with occupant detection system	●	●	●	●	●	●	●
Airbag (front passenger):	Seat cushion	●	●	●	●	●	●	●
Airbag (front seats):	Side-impact	●	●	●	●	●	●	●
Airbag:	Driver's knee	●	●	●	●	●	●	●
Airbag:	Side curtain	●	●	●	●	●	●	●
Brake pedal:	Collapsible	●	●	●	●	●	●	●
Camera:	Front-view with guide lines	-	-	-	-	●	-	●
Camera:	Rearview with dynamic guide lines and rear washer	●	●	●	●	●	●	●
Child safety:	Rear door locking system	●	●	●	●	●	●	●
Child safety:	ISO-FIX/LATCH anchor system (rear seat)	●	●	●	●	●	●	●
Door locks:	Automatic	●	●	●	●	●	●	●
Driver's footrest:	Impact-absorbing	●	●	●	●	●	●	●
Driving assist systems (advanced):	Subaru Rear/Side Vehicle Detection (SRVD)	-	●	●	●	●	●	●
Subaru Rear/Side Vehicle Detection features:	Blind Spot Detection (BSD)	-	●	●	●	●	●	●
Subaru Rear/Side Vehicle Detection features:	Lane Change Assist (LCA)	-	●	●	●	●	●	●
Subaru Rear/Side Vehicle Detection features:	Rear Cross Traffic Alert (RCTA)	-	●	●	●	●	●	●
Driving assist systems (advanced):	Reverse Automatic Braking (RAB)	-	●	●	●	●	●	●
Driving assist systems (advanced):	EyeSight® driver assist technology	●	●	●	●	●	●	●
Driving assist systems (advanced):	DriverFocus® Distraction Mitigation System (DMS)	-	-	-	●	-	●	●
Driving assist systems:	Cruise control	●	●	●	●	●	●	●
Driving assist systems:	Traction Control System (TCS)	●	●	●	●	●	●	●
Driving assist systems:	Vehicle Dynamics Control (VDC)	●	●	●	●	●	●	●

Product details based on the latest information available at the time of publication and are subject to change without notice or incurring obligation. © 2023 Subaru Canada, Inc.

2024 OUTBACK VEHICLE SPECIFICATIONS

		CP	TP	OP	LP	WX	LX	PX
SAFETY AND SECURITY (CONTINUED)								
EyeSight® features:	Adaptive cruise control with vehicle hold	●	●	●	●	●	●	●
EyeSight® features:	Automatic emergency steering	-	●	●	●	●	●	●
EyeSight® features:	Lane centring assist	●	●	●	●	●	●	●
EyeSight® features:	Lane keep assist and sway warning	●	●	●	●	●	●	●
EyeSight® features:	Lead vehicle start alert	●	●	●	●	●	●	●
EyeSight® features:	Pre-collision braking	●	●	●	●	●	●	●
EyeSight® features:	Pre-collision throttle management	●	●	●	●	●	●	●
EyeSight® features:	Wide-angle mono camera	●	●	●	●	●	●	●
Head restraints (front):	Whiplash-reducing, removable, height and tilt-adjustable	●	●	●	●	●	●	●
Head restraints (rear):	Removable, height-adjustable	●	●	●	●	●	●	●
Passenger safety:	Rear seat reminder	●	●	●	●	●	●	●
Seatbelt (driver):	3-point adaptive with double pretensioners, load limiter and locking tongue	●	●	●	●	●	●	●
Seatbelt (front passenger):	3-point adaptive with pretensioner, load limiter and locking tongue	●	●	●	●	●	●	●
Seatbelts (all):	Engagement indicator and warning chime	●	●	●	●	●	●	●
Seatbelts (rear):	3-point with pretensioners, load limiters and locking tongue (outboard seating positions only)	●	●	●	●	●	●	●
Seatbelts (rear):	3-point, all seating positions	●	●	●	●	●	●	●
Seats (front):	Whiplash-reducing	●	●	●	●	●	●	●
Security:	Anti-theft system with engine immobilizer system	●	●	●	●	●	●	●
Security:	Keyless entry system with panic alarm	●	-	-	-	-	-	-
Security:	Proximity key with push-button start	-	●	●	●	●	●	●
Steering column:	Collapsible	●	●	●	●	●	●	●

EXTERIOR FEATURES								
Badging (front doors):	Wilderness	-	-	-	-	●	-	-
Badging (rear):	Gunmetal	-	-	●	-	●	-	-
Badging (rear):	Chrome	●	●	-	●	-	●	●
Badging (rear):	XT	-	-	-	-	-	●	●
Badging (rear):	Symmetrical AWD	●	●	●	●	●	●	●
Badging (rear):	Wilderness	-	-	-	-	●	-	-
Body (rocker panels):	Lower cladding, black	●	●	●	●	●	●	●
Body:	Anti-corrosion treatment	●	●	●	●	●	●	●
Body:	Dual-sided galvanized steel	●	●	●	●	●	●	●
Skid plate:	Lower front, aluminum	-	-	-	-	●	-	-
Body (wheel arches):	Cladding, black	●	●	●	●	-	●	●
Body (wheel arches):	Wilderness design cladding, black	-	-	-	-	●	-	-
Bumper (rear):	Step pad, black	-	-	●	-	-	-	-
Bumpers:	Lower cladding, black	●	●	●	-	-	-	-
Bumpers:	Lower cladding, black with silver accents	-	-	-	●	-	●	●
Bumpers:	Wilderness design, black with anodized copper finish tow hook covers	-	-	-	-	●	-	-
Cargo access:	Rear liftgate	●	-	-	-	-	-	-
Cargo access:	Rear liftgate, power (hands-free) with memory function and lock switch	-	●	●	●	●	●	●
Door handles:	Body colour	●	●	●	●	●	●	-
Door handles:	Chrome	-	-	-	-	-	-	●
Door mirrors:	Auto-dimming with approach lighting	-	●	●	●	●	●	●
Door mirrors:	Integrated LED turn signals	●	●	●	●	●	●	●

2024 OUTBACK VEHICLE SPECIFICATIONS

		CP	TP	OP	LP	WX	LX	PX
EXTERIOR FEATURES (CONTINUED)								
Door mirrors:	Passenger-side reverse tilt	-	-	-	●	-	●	●
Door mirrors:	Power-adjustable, power-folding and heated	-	-	-	-	-	-	●
Door mirrors:	Power-adjustable, foldable and heated	●	●	●	●	●	●	-
Door mirrors:	Gloss black	●	●	●	●	-	●	-
Door mirrors:	Black	-	-	-	-	●	-	-
Door mirrors:	Satin chrome	-	-	-	-	-	-	●
Exhaust:	Single-tip, hidden	●	●	●	●	-	-	-
Exhaust:	Dual-tip, hidden	-	-	-	-	●	●	●
Fog lights:	LED	●	●	●	●	-	●	●
Fog lights:	Hexagonal LED	-	-	-	-	●	-	-
Fuel Door:	Push-open, electronically lockable	●	●	●	●	●	●	●
Grille:	Hexagonal design with wing	●	●	●	●	●	●	●
Grille:	Gloss black accents	-	-	●	-	-	-	-
Grille:	Matte black accents	-	-	-	-	●	-	-
Grille:	Silver accents	●	●	-	●	-	●	●
Grille:	Active Grille Shutter	●	●	●	●	-	-	-
Headlights:	Fully-automatic	●	●	●	●	●	●	●
Headlights:	LED Daytime Running Lights (DRL)	●	●	●	●	●	●	●
Headlights:	LED steering-responsive (SRH) with High-Beam Assist (HBA)	●	●	●	●	●	●	●
Hood:	Aluminum	●	●	●	●	●	●	●
Hood:	Sound insulator	●	●	●	●	-	●	●
Hood:	Decal, matte black	-	-	-	-	●	-	-
Roof rails:	Raised profile with tie-down holes, high payload capacity	-	-	-	-	●	-	-
Roof rails:	Raised profile with integrated cross-bars and tie-down holes	●	●	●	●	-	●	●
Roof rails:	Silver accents	-	-	-	-	-	-	●
Roof rails:	Anodized copper finish accents	-	-	-	-	●	-	-
Spoiler:	Roofline, integrated brake light, gloss black	-	-	●	-	-	-	-
Spoiler:	Roofline, integrated brake light	●	●	-	●	●	●	●
Sunroof:	Power-tilting and sliding with sunshade	-	●	●	●	●	●	●
Tail lights:	LED combination	●	●	●	●	●	●	●
Tire (spare):	Full-size, 225/65 R17	-	-	-	-	●	-	-
Tire (spare):	Compact-size, T155/80 D17	●	●	●	●	-	●	●
Tire (spare):	Under cargo area	●	●	●	●	●	●	●
Tires:	225/65 R17	●	●	-	-	●	-	-
Tires:	225/60 R18	-	-	●	●	-	●	●
Tires:	Yokohama®	●	●	●	●	-	●	●
Tires:	Yokohama® Geolandar A/T	-	-	-	-	●	-	-
Tires:	All-Season	●	●	●	●	-	●	●
Tires:	All-Terrain	-	-	-	-	●	-	-
Wheels:	17" x 7" steel with wheel covers	●	-	-	-	-	-	-
Wheels:	17" x 7" aluminum alloy, split 5-spoke, two-tone with machined finish	-	●	-	-	-	-	-
Wheels:	17" x 7" aluminum alloy, 6-spoke, with matte black finish	-	-	-	-	●	-	-
Wheels:	18" x 7" aluminum alloy, 10-spoke, two-tone with machined finish	-	-	-	●	-	●	●
Wheels:	18" x 7" aluminum alloy, 10-spoke, gunmetal finish	-	-	●	-	-	-	-
Window (rear):	Defogger with timer	●	●	●	●	●	●	●
Window trim:	Chrome surround	●	●	-	●	-	●	●

Product details based on the latest information available at the time of publication and are subject to change without notice or incurring obligation. © 2023 Subaru Canada, Inc.

2024 OUTBACK VEHICLE SPECIFICATIONS

		CP	TP	OP	LP	WX	LX	PX
EXTERIOR FEATURES (CONTINUED)								
Window trim:	Black	-	-	●	-	●	-	-
Windows (rear and cargo areas):	Privacy tinted glass	●	●	●	●	●	●	●
Windshield:	Laminated UV protection	●	●	●	●	●	●	●
Windshield:	Wiper de-icer	-	●	●	●	●	●	●
Wiper (rear window):	Intermittent and continuous mode with washer	●	●	●	●	●	●	●
Wipers (windshield):	Variable intermittent with washer, headlight-linked	●	●	●	●	●	●	●
SEATING & TRIM								
Accent stitching:	Anodized copper	-	-	-	-	●	-	-
Accent stitching:	Silver	●	●	-	●	-	●	●
Accent stitching:	Green and silver	-	-	●	-	-	-	-
Dashboard:	Silver trim accents	-	-	●	●	-	●	●
Dashboard:	Gunmetal trim accents	-	-	-	-	●	-	-
Door handles (interior):	Black	●	-	-	-	●	-	-
Door handles (interior):	Chrome	-	●	●	●	-	●	●
Doors:	Black trim accents	●	●	●	-	-	-	-
Doors:	Gloss black trim accents	-	-	-	●	-	●	●
Doors:	Silver trim accents	-	-	●	●	-	●	●
Doors:	Gunmetal trim accents	-	-	-	-	●	-	-
Floor mats:	All-weather rubber liner	-	-	●	-	-	-	-
Floor mats:	All-weather rubber liner, Wilderness logo	-	-	-	-	●	-	-
Floor mats:	Carpet, embroidered Outback logo	●	●	-	●	-	-	-
Floor mats:	Carpet, embroidered Outback XT logo	-	-	-	-	-	●	●
Gear selector:	Leather-wrapped	-	●	●	●	●	●	●
Gear selector:	Soft-touch shift boot	●	●	●	●	●	●	●
Headliner:	Black	-	-	-	-	●	-	-
Instrument panel:	Black trim accents	●	●	-	-	-	-	-
Instrument panel:	Silver trim accents	-	-	●	●	-	●	●
Instrument panel:	Gunmetal trim accents	-	-	-	-	●	-	-
Interior trim surfaces:	Cloth	●	●	-	-	-	-	-
Interior trim surfaces:	Soft-touch	-	-	●	●	●	●	●
Pedals:	Aluminum alloy	-	-	●	-	-	-	-
Seat (driver's):	Power-adjustable (10-way incl. 2-way lumbar)	●	●	●	-	●	-	-
Seat (driver's):	Power-adjustable (12-way incl. 4-way lumbar)	-	-	-	●	-	●	●
Seat (driver's):	Cushion length adjustment (manual)	-	-	-	●	-	●	●
Seat (driver's):	Memory settings with exterior mirror synchronization, two position	-	-	-	●	-	●	●
Seat (front passenger):	Manually adjustable (4-way)	●	●	●	-	●	-	-
Seat (front passenger):	Power-adjustable (8-way)	-	-	-	●	-	●	●
Seating capacity:	5-passengers	●	●	●	●	●	●	●
Seating surfaces:	Cloth	●	●	-	-	-	-	-
Seating surfaces:	Leather	-	-	-	●	-	●	-
Seating surfaces:	Leather, genuine Nappa	-	-	-	-	-	-	●
Seating surfaces:	All-weather soft-touch	-	-	●	-	-	-	-
Seating surfaces:	All-weather soft-touch with geometric pattern	-	-	-	-	●	-	-
Seats (front):	Heated, three settings	●	●	●	●	●	●	●
Seats (front):	Centre console armrest	●	●	●	●	●	●	●

● Standard — Not Available

CP Convenience TP Touring OP Onyx LP Limited WX Wilderness LX Limited XT PX Premier XT

2024 OUTBACK VEHICLE SPECIFICATIONS

		CP	TP	OP	LP	WX	LX	PX
SEATING & TRIM (CONTINUED)								
Seats (front):	Ventilated, three settings	-	-	-	-	-	-	●
Seats (front):	Embossed Wilderness logo on headrests	-	-	-	-	●	-	-
Seats (rear outboard):	Heated, two settings	-	-	●	●	●	●	●
Seats (rear):	Contoured bench with one-touch flat-folding 60/40-split seatbacks	●	●	●	●	●	●	●
Seats (rear):	Folding centre armrest with cup holders	●	●	●	●	●	●	●
Seats (rear):	Reclining seatback	●	●	●	●	●	●	●
Seats (rear):	All-weather seatback material	-	-	-	-	●	-	-
Steering wheel:	Leather-wrapped	●	●	●	●	●	●	-
Steering wheel:	Leather-wrapped, premium	-	-	-	-	-	-	●
Steering wheel:	Silver trim accents	●	●	●	●	-	●	●
Steering wheel:	Anodized copper finish trim accents	-	-	-	-	●	-	-
Steering wheel:	Heated	●	●	●	●	●	●	●
Steering wheel:	Tilt-adjustable and telescoping	●	●	●	●	●	●	●
AUDIO AND TECHNOLOGY								
Antenna:	Shark fin (roof-mounted)	●	●	●	●	●	●	●
Antenna:	Black	●	●	●	●	●	●	●
Audio system:	7.0-inch touch-screen infotainment system (dual)	●	-	-	-	-	-	-
Audio system:	11.6-inch tablet-style touch-screen infotainment system	-	●	●	-	●	-	-
Audio system:	11.6-inch tablet-style touch-screen infotainment system with GPS navigation	-	-	-	●	-	●	●
Audio system:	AM/FM/CD/MP3/WMA supported	-	-	-	-	-	-	●
Audio system:	AM/FM/MP3/WMA supported	●	●	●	●	●	●	-
Audio system:	Single disc CD player in centre armrest	-	-	-	-	-	-	●
Audio system:	Apple CarPlay® and Android Auto® functionality	●	-	-	-	-	-	-
Audio system:	Wireless Apple CarPlay® and Android Auto® functionality	-	●	●	●	●	●	●
Audio system:	What3words navigation functionality	-	-	-	●	-	●	●
Audio system:	Integrated steering wheel audio controls	●	●	●	●	●	●	●
Audio system:	Radio Data System	●	●	●	●	●	●	●
Audio system:	SiriusXM® satellite radio with Travel Link® (free 3-month trial subscription included)	●	●	●	-	●	-	-
Audio system:	SiriusXM® satellite radio with Travel Link® and Traffic (free 3-month trial subscription included)	-	-	-	●	-	●	●
Connectivity:	USB-A (x1) port in centre console	●	-	-	-	-	-	-
Connectivity:	USB-A (x1) and USB-C (x1) ports in front	-	●	●	●	●	●	●
Connectivity:	USB-A (x1) and USB-C (x1) in rear	●	●	●	●	●	●	●
Connectivity:	Bluetooth® mobile phone connectivity with voice-activation and Bluetooth® streaming audio	●	●	●	●	●	●	●
Connectivity:	Auxiliary audio input in centre console	●	●	●	●	●	●	●
Connectivity:	Wireless phone charger in centre console	-	●	●	●	●	●	●
Speakers:	4-speaker system	●	-	-	-	-	-	-
Speakers:	6-speaker system	-	●	-	-	-	-	-
Speakers:	Premium 12-speaker Harman Kardon® system with subwoofer and amplifier	-	-	●	●	●	●	●
Connected car system:	SUBARU STARLINK® Connected Services (free 3-year trial subscription included)	-	●	●	●	●	●	●
SUBARU STARLINK® features:	Advanced automatic collision notification	-	●	●	●	●	●	●
SUBARU STARLINK® features:	Boundary alert	-	●	●	●	●	●	●

Product details based on the latest information available at the time of publication and are subject to change without notice or incurring obligation. © 2023 Subaru Canada, Inc.

2024 OUTBACK VEHICLE SPECIFICATIONS

		CP	TP	OP	LP	WX	LX	PX
AUDIO AND TECHNOLOGY (CONTINUED)								
SUBARU STARLINK® features:	Concierge	-	●	●	●	●	●	●
SUBARU STARLINK® features:	Curfew alert	-	●	●	●	●	●	●
SUBARU STARLINK® features:	Enhanced roadside assistance	-	●	●	●	●	●	●
SUBARU STARLINK® features:	Enhanced service appointment scheduler	-	●	●	●	●	●	●
SUBARU STARLINK® features:	Head unit firmware-over-the-air updates (FOTA)	-	●	●	●	●	●	●
SUBARU STARLINK® features:	Point of interests	-	-	-	●	-	●	●
SUBARU STARLINK® features:	Remote climate control	-	●	●	●	●	●	●
SUBARU STARLINK® features:	Remote door lock and unlock	-	●	●	●	●	●	●
SUBARU STARLINK® features:	Remote engine start and stop	-	●	●	●	●	●	●
SUBARU STARLINK® features:	Remote horn and lights	-	●	●	●	●	●	●
SUBARU STARLINK® features:	Remote tailgate unlock	-	●	●	●	●	●	●
SUBARU STARLINK® features:	Remote vehicle locator	-	●	●	●	●	●	●
SUBARU STARLINK® features:	SOS emergency service	-	●	●	●	●	●	●
SUBARU STARLINK® features:	Speed alert	-	●	●	●	●	●	●
SUBARU STARLINK® features:	Stolen vehicle immobilizer	-	●	●	●	●	●	●
SUBARU STARLINK® features:	Stolen vehicle recovery	-	●	●	●	●	●	●
SUBARU STARLINK® features:	Vehicle health	-	●	●	●	●	●	●
SUBARU STARLINK® features:	Vehicle security alarm notification	-	●	●	●	●	●	●

COMFORT & CONVENIENCE								
Assist grips:	Outboard seating positions	●	●	●	●	●	●	●
Cargo area:	Tonneau cargo cover (pop-up functionality)	●	●	●	●	●	●	●
Cargo area:	Protective cargo tray	-	●	●	●	-	●	●
Cargo area:	Wilderness design protective cargo tray	-	-	-	-	●	-	-
Cargo area:	Additional cargo hooks	-	-	●	-	●	-	●
Climate control:	Air conditioning with air filtration	●	●	●	●	●	●	●
Climate control:	Automatic	●	-	-	-	-	-	-
Climate control:	Automatic, dual-zone	-	●	●	●	●	●	●
Climate control:	Humidity sensor	-	●	●	●	●	●	●
Climate control:	Rear vents (centre console)	-	●	●	●	●	●	●
Cup holders (front):	Console-integrated (2)	●	●	●	●	●	●	●
Cup holders (front):	Door-integrated (2)	●	●	●	●	●	●	●
Cup holders (rear):	Door-integrated (2)	●	●	●	●	●	●	●
Cup holders (rear):	Armrest-integrated (2)	●	●	●	●	●	●	●
Glove box:	Lockable and illuminated	●	●	●	●	●	●	●
Interior lighting:	Tailgate mounted light, LED	-	●	●	●	●	●	●
Interior lighting:	Cargo area light, LED	●	●	●	●	●	●	●
Interior lighting:	Reading lights (front)	●	●	●	●	●	●	●
Interior lighting:	Welcome lighting	●	●	●	●	●	●	●
Interior lighting:	Console illumination (front)	●	●	●	●	●	●	●
Interior lighting:	Door courtesy lights (front)	●	●	●	●	●	●	●
Interior lighting:	Automatic off delay	●	●	●	●	●	●	●
Power outlet:	12V in rear console	●	●	●	●	●	●	●
Power outlet:	12V in glove box	●	●	●	●	●	●	●
Power outlet:	12V in cargo area	●	●	●	●	●	●	●

Product details based on the latest information available at the time of publication and are subject to change without notice or incurring obligation. © 2023 Subaru Canada, Inc.

2024 OUTBACK VEHICLE SPECIFICATIONS

CP TP OP LP WX LX PX

COMFORT & CONVENIENCE (CONTINUED)

Rearview mirror:	Auto-dimming with HomeLink® and compass	-	●	●	●	●	●	-
Rearview mirror:	Smart with HomeLink® and compass	-	-	-	-	-	-	●
Storage:	Centre console, illuminated tray	●	●	●	●	●	●	●
Storage:	Door compartments	●	●	●	●	●	●	●
Storage:	Seatback pockets (front)	●	●	-	-	-	-	-
Storage:	Seatback pockets (front), multi-purpose pocket	-	-	●	●	●	●	●
Storage:	Centre console armrest	●	●	●	●	●	●	●
Storage:	Overhead sunglasses compartment	●	●	●	●	●	●	●
Visor:	Dual, sliding with illuminated mirrors	●	●	●	●	●	●	●
Windows (front and rear):	Power operated	●	●	●	●	●	●	●
Windows (front and rear):	Auto up/down	-	●	●	●	●	●	●
Windows (front):	Auto up/down	●	-	-	-	-	-	-
Windows (front):	Illuminated switches	●	●	●	●	●	●	●

INSTRUMENTS

Instruments:	4.2-inch colour multi-information display (gauge cluster integrated)	●	●	●	●	●	●	●
Instruments:	EyeSight® Assist Monitor	●	●	●	●	●	●	●
Instrument panel:	ECO gauge	●	●	●	●	●	●	●
Instrument panel:	Manual mode gear position and mode indicator	●	●	●	●	●	●	●
Speedometer:	Electronically-controlled analog	●	●	●	●	●	●	●
Gauges:	Analog with white illumination and chrome bezel	●	●	●	●	-	●	●
Gauges:	Analog with white illumination, anodized copper finish bezel and Subaru Wilderness graphics	-	-	-	-	●	-	-

MEASUREMENTS

CP TP OP LP WX LX PX

FUEL ECONOMY

Automatic transmission (City) (L/100 km)	9.2	9.2	9.2	9.2	11.0	10.6	10.6
Automatic transmission (Hwy) (L/100 km)	7.3	7.3	7.3	7.3	9.0	8.1	8.1
Automatic transmission (City) (Imperial MPG)	31	31	31	31	26	27	27
Automatic transmission (Hwy) (Imperial MPG)	39	39	39	39	31	35	35
Fuel tank capacity (L)	70	70	70	70	70	70	70

GENERAL WEIGHTS

Curb weight (kg)	1,659	1,679	1,698	1,709	1,789	1,784	1,790
Gross Vehicle Weight Rating (GVWR) (kg)	2,200	2,200	2,200	2,200	2,280	2,280	2,280
Payload (kg)	408	408	408	408	408	408	408
Maximum roof rail load, Dynamic (kg)	68	68	68	68	100	68	68
Maximum roof rail load, Static (kg)	185	185	185	185	318	185	185

TOWING CAPACITY (*PLEASE REVIEW OWNER'S MANUAL FOR DETAILS)

Towing capacity (kg): Maximum weight with trailer brakes¹	1,225	1,225	1,225	1,225	1,588	1,588	1,588
Tongue weight (kg): Maximum	122	122	122	122	159	159	159

Product details based on the latest information available at the time of publication and are subject to change without notice or incurring obligation. © 2023 Subaru Canada, Inc.

2024 OUTBACK VEHICLE SPECIFICATIONS

	CP	TP	OP	LP	WX	LX	PX
EXTERIOR							
Drag coefficient (cd)	0.343	0.343	0.344	0.344	0.375	0.354	0.354
Height with roof rails (mm)	1,680	1,680	1,680	1,680	1,700	1,680	1,680
Length (mm)	4,875	4,875	4,875	4,875	4,860	4,875	4,875
Ground clearance (mm): Minimum	220	220	220	220	241	220	220
Track (mm): Front	1,570	1,570	1,570	1,570	1,575	1,570	1,570
Track (mm): Rear	1,595	1,595	1,595	1,595	1,600	1,595	1,595
Wheelbase (mm)	2,745	2,745	2,745	2,745	2,745	2,745	2,745
Width (mm): Body	1,885	1,885	1,885	1,885	1,895	1,885	1,885
Width (mm): Mirrors extended	2,084	2,084	2,084	2,084	2,084	2,084	2,084
Width (mm): Mirrors folded	1,897	1,897	1,897	1,897	1,897	1,897	1,897
Approach angle (deg):	18.2	18.2	18.2	18.0	20.0	18.0	18.0
Departure angle (deg):	21.7	21.7	21.7	21.7	23.6	21.7	21.7
Ramp breakover angle (deg):	19.4	19.4	19.4	19.4	21.2	19.4	19.4
INTERIOR							
EPA passenger volume (L)	3,087	3,044	3,044	3,044	3,044	3,044	3,044
Headroom (mm): Front	1,019	992	992	992	992	992	992
Headroom (mm): Rear	993	992	992	992	992	992	992
Hip room (mm): Front	1,410	1,410	1,410	1,410	1,410	1,410	1,410
Hip room (mm): Rear	1,393	1,393	1,393	1,393	1,393	1,393	1,393
Legroom (mm): Front	1,087	1,087	1,087	1,087	1,087	1,087	1,087
Legroom (mm): Rear	1,004	1,004	1,004	1,004	1,004	1,004	1,004
Shoulder room (mm): Front	1,476	1,476	1,476	1,476	1,476	1,476	1,476
Shoulder room (mm): Rear	1,457	1,457	1,457	1,457	1,457	1,457	1,457
MECHANICAL							
Minimum turning circle (curb-to-curb) (m):	11.0	11.0	11.0	11.0	11.0	11.0	11.0
Steering ratio:	13.5:1	13.5:1	13.5:1	13.5:1	13.5:1	13.5:1	13.5:1
Steering turns (lock-to-lock):	2.7	2.7	2.7	2.7	2.7	2.7	2.7
CARGO AREA							
Cargo space height (mm):	815	815	815	815	815	815	815
Cargo volume (L): Seats folded	2,141	2,141	2,141	2,141	2,141	2,141	2,141
Cargo volume (L): Seats up	923	923	923	923	923	923	923
Cargo floor length (mm): Seats folded	1,906	1,906	1,906	1,906	1,906	1,906	1,906
Cargo floor length (mm): Seats up	1,067	1,067	1,067	1,067	1,067	1,067	1,067
Liftgate opening (mm): Height	749	749	749	749	749	749	749
Liftgate opening (mm): Width, maximum	1,149	1,149	1,149	1,149	1,149	1,149	1,149
Liftgate opening (mm): Width, lower	1,120	1,120	1,120	1,120	1,120	1,120	1,120
Liftgate opening (mm): Width, upper	975	975	975	975	975	975	975
Cargo liftover height (mm):	722	722	722	722	742	722	722
Width between wheel wells (mm):	1,100	1,100	1,100	1,100	1,100	1,100	1,100

Product details based on the latest information available at the time of publication and are subject to change without notice or incurring obligation. © 2023 Subaru Canada, Inc.

2024 OUTBACK VEHICLE SPECIFICATIONS

CP | TP | OP | LP | WX | LX | PX

GEAR RATIOS

High-torque Lineartronic® CVT (with simulated manual mode)

D range	-	-	-	-	3.490-0.506	3.229-0.468	3.229-0.468
First gear	-	-	-	-	3.490	3.229	3.229
Second gear	-	-	-	-	2.497	2.310	2.310
Third gear	-	-	-	-	1.788	1.654	1.654
Fourth gear	-	-	-	-	1.381	1.278	1.278
Fifth gear	-	-	-	-	1.065	0.985	0.985
Sixth gear	-	-	-	-	0.830	0.768	0.768
Seventh gear	-	-	-	-	0.653	0.604	0.604
Eighth gear	-	-	-	-	0.506	0.468	0.468
Reverse gear	-	-	-	-	3.394	3.139	3.139
Final drive ratio	-	-	-	-	4.111	4.111	4.111

Lineartronic® CVT (with simulated manual mode)

D range	4.066-0.503	4.066-0.503	4.066-0.503	4.066-0.503	-	-	-
First gear	4.066	4.066	4.066	4.066	-	-	-
Second gear	2.600	2.600	2.600	2.600	-	-	-
Third gear	1.827	1.827	1.827	1.827	-	-	-
Fourth gear	1.377	1.377	1.377	1.377	-	-	-
Fifth gear	1.061	1.061	1.061	1.061	-	-	-
Sixth gear	0.836	0.836	0.836	0.836	-	-	-
Seventh gear	0.668	0.668	0.668	0.668	-	-	-
Eighth gear	0.559	0.559	0.559	0.559	-	-	-
Reverse gear	4.379	4.379	4.379	4.379	-	-	-
Final drive ratio	3.900	3.900	3.900	3.900	-	-	-

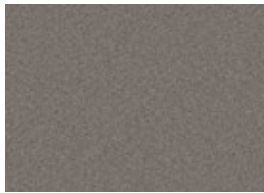
Product details based on the latest information available at the time of publication and are subject to change without notice or incurring obligation. © 2023 Subaru Canada, Inc.

2024 OUTBACK PAINT / UPHOLSTERY / WHEELS

EXTERIOR COLOURS



Autumn Green Metallic



Brilliant Bronze Metallic



Cosmic Blue Pearl



Crystal Black Silica



Crystal White Pearl



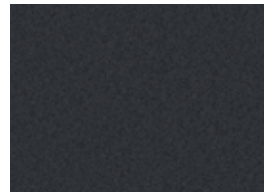
Dark Mahogany Pearl



Geyser Blue



Ice Silver Metallic



Magnetite Grey Metallic

UPHOLSTERY



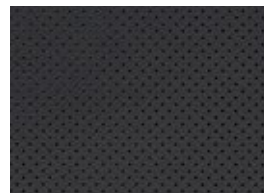
Black Cloth



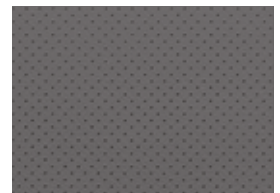
Grey All-weather Soft-touch material



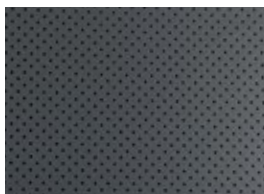
Grey All-weather Soft-touch material with geometric pattern



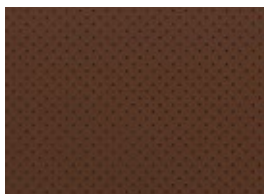
Black Leather



Platinum Leather



Black Nappa Leather



Brown Nappa Leather

WHEELS



17-inch Steel with wheel covers
(Convenience)



17-inch Aluminum Alloy, split 5-spoke, two-tone with machined finish
(Touring)



18-inch Aluminum Alloy, 10-spoke, with gunmetal finish
(Onyx)



17-inch Aluminum Alloy, 6-spoke, with matte black finish
(Wilderness)



18-inch Aluminum Alloy, 10-spoke, two-tone with machined finish
(Limited, Limited XT, Premier XT)

Product details based on the latest information available at the time of publication and are subject to change without notice or incurring obligation. © 2023 Subaru Canada, Inc.

2024 OUTBACK VEHICLE ORDERING GUIDE

VEHICLE PRICING

MODEL	ENGINE	TRANSMISSION	MODEL CODE	MSRP
Convenience	182-hp, 2.5-L Direct Injection	CVT	RDA CP	\$33,995
Touring	182-hp, 2.5-L Direct Injection	CVT	RDA TP	\$38,295
Onyx	182-hp, 2.5-L Direct Injection	CVT	RDA OP	\$40,595
Limited	182-hp, 2.5-L Direct Injection	CVT	RDA LP	\$42,295
Wilderness	260-hp, 2.4-L Turbocharged Direct Injection	CVT	RDA WX	\$44,795
Limited XT	260-hp, 2.4-L Turbocharged Direct Injection	CVT	RDA LX	\$45,295
Premier XT	260-hp, 2.4-L Turbocharged Direct Injection	CVT	RDA PX	\$47,395

ALL PRICES ALONG WITH SPECIFICATIONS ARE SUBJECT TO CHANGE WITHOUT NOTICE. THE DEALER MAY SELL BELOW SUGGESTED RETAIL WITHOUT FEAR OF RECRIMINATION FROM SUBARU CANADA, INC. MSRP SHOWN EXCLUDES AIR CONDITIONING SURCHARGE, INLAND FREIGHT AND PRE-DELIVERY CHARGES. MSRP DOES NOT INCLUDE APPLICABLE TAXES.

COLOUR AVAILABILITY

		CONVENIENCE	TOURING	ONYX	LIMITED	WILDERNESS	LIMITED XT	PREMIER XT
EXTERIOR COLOUR	COLOUR CODE	RDA CP	RDA TP	RDA OP	RDA LP	RDA WX	RDA LX	RDA PX
Autumn Green Metallic	AP	—	20	4G	20	2G	20	20/2B
Brilliant Bronze Metallic	CD	—	20	—	20	—	20	—
Cosmic Blue Pearl	AS	20	20	4G	20/10	—	20/10	20/2B
Crystal Black Silica	4S	20	20	4G	20	2G	20	20/2B
Crystal White Pearl	1X	20	20	4G	20	2G	20	20/2B
Dark Mahogany Pearl	AU	—	20	—	20	—	20	20
Geyser Blue	AT	—	—	—	—	2G	—	—
Ice Silver Metallic	1U	20	20	4G	20	2G	20	20
Magnetite Grey Metallic	8Y	20	20	4G	20	2G	20	20/2B
SEATING SURFACES		Cloth	Cloth	All-Weather	Leather	All-Weather	Leather	Nappa Leather

20 : Black **10** : Platinum **4G** : Grey Two-Tone **2B** : Brown **2G** : Grey

Product details based on the latest information available at the time of publication and are subject to change without notice or incurring obligation. © 2023 Subaru Canada, Inc.