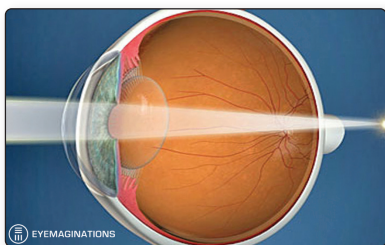
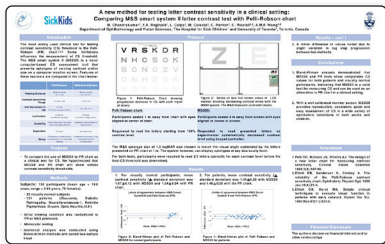
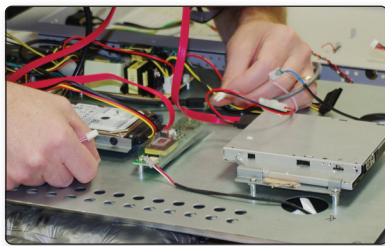




**The American-Made All-in-One Visual Acuity System with 22" Screen**  
(shown here with optional Glare Testing Lights)



# Smart System<sup>®</sup> 20/20

PROUDLY MADE IN THE U.S.A.



## An Advanced Vision Testing System For Forward-Thinking Eyecare Professionals

The American-Made Smart System 20/20 computerized visual acuity and contrast sensitivity testing system offers the technological features needed to increase the quality of care you provide, streamline your practice and increase throughput.

**Made in the USA with Pride** – Designed and manufactured in Illinois, our 22" All-in-One System is precisely built with industrial-grade hardware. By engineering and manufacturing our own systems we can produce a product with a longer life-cycle, control the quality and quantity of the inventory and parts, and deliver fast and complete serviceability of each and every unit.

**Peer-Reviewed and Science-Based Tests** – No other company providing computerized visual acuity systems has more science behind the product than M&S. Our tests, algorithms and protocols have all been peer-reviewed and tested by key professionals and scientists in the industry. And our technology is certified and calibrated to the ANSI and ISO specifications for vision testing.

**Interface with other Industry Leaders** – M&S has customized algorithms for pharmaceutical companies, developed software for licensing, and developed proprietary products. We've also integrated technologies from other industry leaders to broaden the capabilities of the Smart System for thorough patient care and utmost efficiency for the eye care professional.



**Unparalleled Technical Support and Customer Service** – We take great pride in providing the best technical and customer support in the industry. Our experienced personnel are dedicated to resolving issues quickly and professionally.

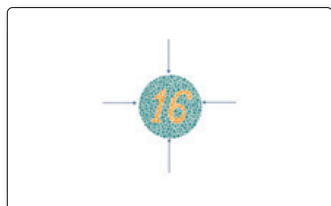
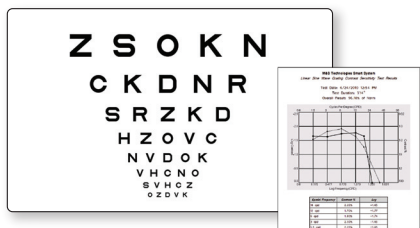
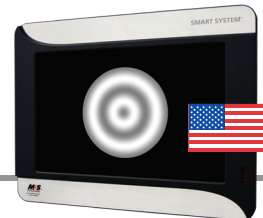
See reverse side for specific features of the M&S Smart System 20/20.

**M&S**  
TECHNOLOGIES<sup>®</sup>

**The First Choice in Vision Testing Systems**

**1-877-225-6101**  
**www.mstech-eyes.com**





**Contrast Sensitivity Testing** – Contrast sensitivity testing with normative data using letters, patented bullseye pattern or linear sine gratings. Test your patients at the standard cycles per degree and at the conclusion of the test, a graph will display the score relative to normative data (data collected and certified by Illinois College of Optometry). A study by the University of Toronto and Hospital for Sick Children determined that the Letter Contrast Sensitivity protocol on the Smart System was as effective as the Pelli-Robson wall chart in diagnosing adults and children with contrast issues.

**Glare Testing System (GTS)** – The M&S GTS provides a consistent technology for measuring the impact of glare on a patient's vision. Carefully calibrated against existing methods of testing and validated by Nova Southeastern University, our GTS provides a consistency that can't be found in rechargeable incandescent systems or any other glare source on the market today. Re-engineered to install easily and securely to the American-Made Smart System.

**Waggoner Color Testing** – Developed by Terry L. Waggoner, O.D. and validated by the U.S. Navy, this test detects, classifies and quantifies the degree of color vision deficiencies. The test correlates 100% with the Nagel Anomaloscope, providing greater correlation than the Ishihara plates. The Waggoner color images also eliminate the potential for providing high frequency clues to the patient, which is a risk associated with computerized color cone tests.

**eEDTRS and ATS Protocols** – Smart System EVA is approved for use in clinical trials by the JAEB center (Tampa, FL) utilizing the eEDTRS™ and ATS protocols. Designed and developed by industry professionals, the eEDTRS protocol has become the standard in vision testing. Running eEDTRS on the Smart System allows for both BCVA testing as well as trial testing. Small and mobile, it saves time, space and unnecessary inconvenience at the investigator site.

**CustomLink™** – This unique feature enables each user to customize all settings on the Smart System so that each user can work with only their particular preferences and not waste time with tests not often used. It also enables eye care professionals with sub-specialties to share the same Smart System without compromising exam room efficiency and throughput.

**Auto-DVD play** – With this feature, the user can access whatever is in the DVD drive directly from the remote control, wireless tablet or illuminated keypad. There's no waiting for the disk to spin-up, nor the need to select chapters or titles. Users can create their own patient education DVDs and play them on demand. The software can be programmed to "learn" unique production DVDs.

## Technical Specs: American-Made All-in-One

Item Name: Smart System 20/20  
Product Code: SS2020A  
Overall Size: 18.25 H x 23.75 W x 3.75 D  
Weight: 23 lbs.  
Display Size: 11.75 H x 18.625 W  
Voltage: 100-240 VAC  
S/U Amp Draw: 2.1  
Outlet: Std Duplex, Non-isolated  
Bracket #: 70020

## Technical Specs: Separate CPU & Monitor

Item Name: Smart System 20/20  
Product Code: SS2020  
Overall Size: 13.50 H x 19.875 W x 2.5 D  
Weight: 11 lbs.  
Display Size: 11.75 H x 18.625 W  
Voltage: 100-240 VAC  
S/U Amp Draw: .95  
Outlet: Std Duplex, Non-isolated  
Bracket #: 70020

**Service Program** – The warranty on the Smart System 20/20 is one-year inclusive of all components. An extended service contract is available on hardware.

## More Key Features and Tests:

- 7 Optotype Choices and Letter Size to 20/1600
- Allen Pictures
- Approved for Clinical Trials using eEDTRS
- Astigmatic Dial (Customizable)
- Automated Protocol Sine Wave Contrast Testing with Normative Data (testing at 1.5, 3 and 6 CPD with Auto-Charting and Plotting)
- Contour Stereo Testing
- Customizable input devices
- Distance Stereo Testing (with optional Liquid Crystal Shutter Glasses)
- Dual View
- Enhanced Anaglyph Random Dot Stereo Testing (Customizable)
- Fixation Disparity
- Glare Testing Kit (optional)
- LEA® Symbols and Numbers
- Low Vision Testing (eLVT) including: 20/3200 Optotype Sizing, Amsler Grid, Berkeley Rudimentary Vision Test, Circle Quadrant Test, Dynamic Visual Acuity, Low Vision Size Progression, Masked Low Vision, 1-Meter Testing, White Letters on Black Background
- Mirrored Lane Compatability
- Optotype Pointer
- Patient Education Integration
- Red/Blue Distance Stereo (Standard)
- Red/Green Duo-Chrome
- Secondary Calibration Distance
- Secondary Default Line
- Sine Wave Grating Contrast Test with Charting Feature and Normative Data
- Single Vertical and Horizontal Line
- Snellen & Sloan Letter Sets
- Three Lines Same Size Display
- Tumbling E's
- User-Created JPG Screen Savers and Uploadable PPT Slide Shows
- Wireless Bluetooth Tablet input (Optional)
- Verhoeff's Circles

