

# imageSPECTRUM

ADVANCED DIGITAL IMAGE MANAGEMENT SYSTEM



Get a Better Handle  
on the Big Picture

## SECURELY STREAMLINE YOUR PRACTICE WORKFLOW

imageSPECTRUM enables eye care practices, clinics, and even entire hospital departments to easily, efficiently, and securely acquire, distribute, and archive medical images and diagnostic reports across their enterprise. The system can also link Canon and third-party diagnostic eye care instruments to create an integrated environment that streamlines practice workflow and efficiency by integrating multiple images and modalities into a single patient record. imageSPECTRUM works with several of the nation's leading reading centers for image review, analysis, and diagnosis.

With imageSPECTRUM, you and your practice can benefit from:

### FASTER IMAGE REVIEW AND DIAGNOSIS

Helps you provide faster and more user-friendly access to all your images and image analysis tools.

### INCREASED PRODUCTIVITY

Streamlines the flow of diagnostic information to help you and your staff work more efficiently as a team.

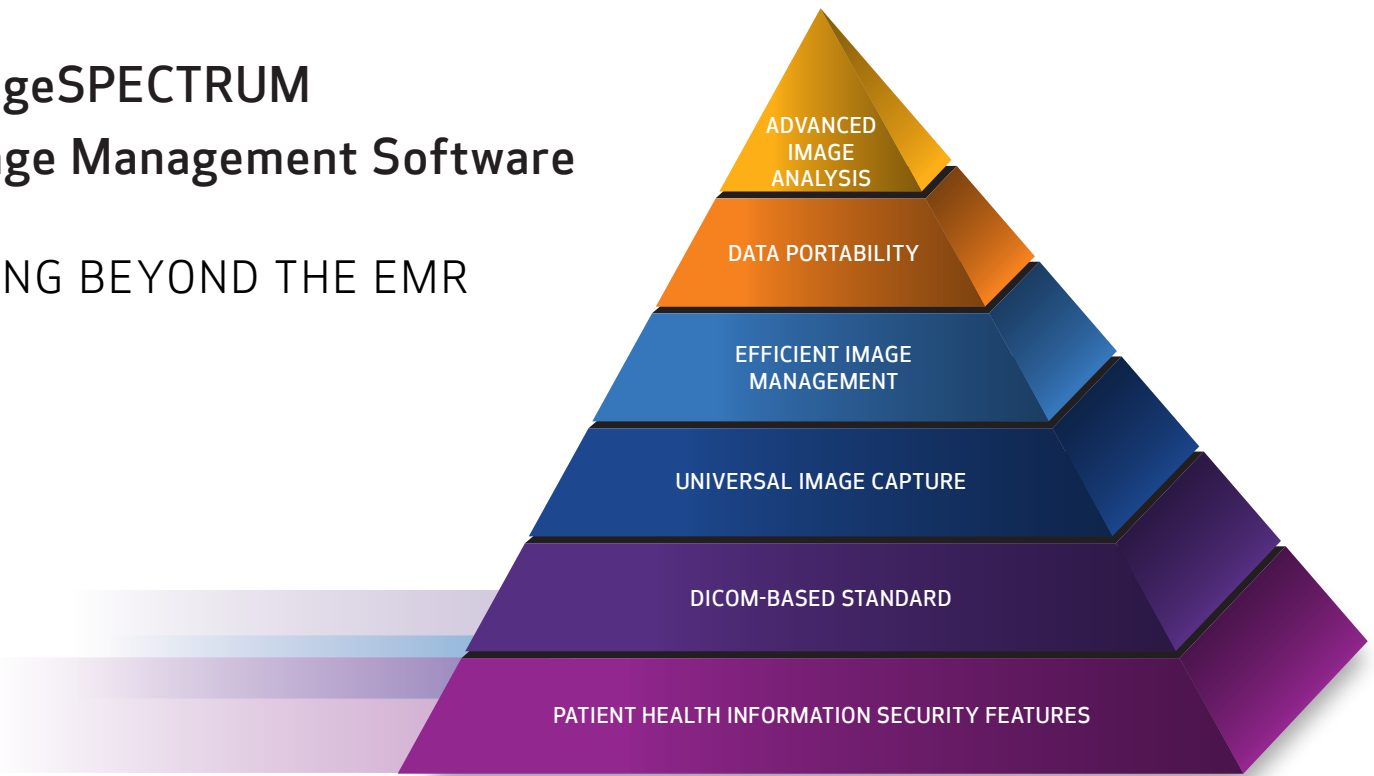
imageSPECTRUM is not only simple, efficient, and easy to use, but it also incorporates data portability and advanced security features absolutely necessary to help you become—and stay—fully HIPAA compliant.

SIMPLE.  
EFFICIENT.  
EASY TO USE.



# imageSPECTRUM Image Management Software

GOING BEYOND THE EMR



## ADVANCED IMAGE ANALYSIS

Use Advanced Tools to help quantify progression; overlay and merge images to clearly see and assess changes; add notes to help document and annotate.

## DATA PORTABILITY

Provides for the secure transmission of patient data to referring physicians and other coordinated care partners.

## EFFICIENT IMAGE MANAGEMENT

This is not an EMR. It's software specifically designed to enhance practice workflow and productivity through the efficient viewing, query, analysis, storage, and sharing of completed images and studies, whether in the next room or across the country.

## UNIVERSAL IMAGE CAPTURE

Bluetooth wireless encryption allows images and reports from third-party legacy instruments to be easily integrated for secure, single-patient record access.▲

## DICOM-BASED STANDARD

Industry standard easily integrates with your diagnostic imaging and measurement devices from Canon and most other eye equipment manufacturers.

## PATIENT HEALTH INFORMATION SECURITY FEATURES

Uniquely equipped with advanced security features, such as Aging Password, Role-based Access, 256K-bit Encryption, Audit Log Recordkeeping, Patient Reconciliation, Auto Log-off, Automatic Archival Solution, and more.

HOW TO BUILD  
SECURE PEACE  
OF MIND

▲ Instruments must have print-to-file capability and either an RS-232 or USB port.

## PROTECT YOUR PATIENTS AND YOUR PRACTICE

imageSPECTRUM was specifically engineered to help practices achieve the highest level of efficiency and includes standard HIPAA-compliant features, such as Role-based Access Control, Aging Password, Auto-logout, Advanced Encryption, and Complete Audit Log Recordkeeping. The system also incorporates a robust set of advanced security and data management features.

### SINGLE DATABASE

imageSPECTRUM can use a single patient database, regardless of practice size, for streamlined data access from anywhere in the world.

### PATIENT RECONCILIATION

Advanced algorithms within the system constantly analyze incoming patient data to verify, identify, and correct erroneous patient demographics, thus ensuring that medical records are always attributed to the correct patient file.

### ARCHIVAL SOLUTION

imageSPECTRUM provides the business continuity and disaster recovery tools required by HIPAA. The system maximizes image storage, efficiency, and archival needs and optimizes the management of short-term and long-term image storage through local, NAS, or enterprise-wide SAN solutions, all while maintaining patient information securely.

### DICOM IMPLEMENTATION

Vendor-neutral and compatible with DICOM®-based systems (including those that support the DICOM communication layer), imageSPECTRUM works within virtually any DICOM network and integrates with Canon and third-party instruments.

### MODALITY WORKLIST

imageSPECTRUM supports DICOM Modality Worklist for optimized electronic workflow of patient demographic data.

### FILE FORMATS

Export images to a CD or other removable storage medium .JPG, .TIFF, .PNG, or DICOM format, with or without patient-identifiable information. Annotations may also be burned directly into the image.

### DIAGNOSTIC (DX) TAGS

Assign and store user-definable diagnostic tags with any study for easy sorting and recall [i.e., Glaucoma, AMD (Dry or Wet), Cataract, etc.].

### ACADEMIC AND RESEARCH SUPPORT TOOLS

Easily separate and recall patient data associated with clinical trials, without having to create separate—and unnecessary—patient files.

### UPGRADES AND CONVERSIONS

imageSPECTRUM enables you to upgrade or convert patient data at any time. Conversions are available for a wide array of legacy and other third-party systems.



ACHIEVE THE  
HIGHEST LEVEL  
OF EFFICIENCY



# LOOK MORE CLOSELY AT CANON INNOVATION AND VERSATILITY

This versatile image management solution offers an array of advanced image viewing and diagnostic tools.

## DIGITAL FILTER PROCESSING

A set of digital filters provides enhanced screening examinations of the retina. A blue 490 nm filter enables detailed views of the RNFL and ILM, highlighting retina folds, cysts, and epiretinal membranes. A green filter focuses on the retinal vasculature and highlights common findings, such as hemorrhages, drusen, and exudates. And a red filter emphasizes the choroid, which is useful for visualizing pigimentary disturbances, choroidal ruptures, choroidal nevi, and choroidal melanomas.

## OPACITY SUPPRESSION

Selectable filter tool that enhances image clarity when imaging those patients with cataracts or opaque media.

## FAF OVERLAY DISPLAY

A Fundus AutoFluorescence (FAF) image may be superimposed over a color image to enhance subtle differences. Varying levels of opacity can be controlled by the user.

## EMBOSS

The emboss tool enhances depth perception with a 3D-like representation of elevations and depressions within the patient's posterior pole.

## AUTO-MOSAIC MODE

Auto-Mosaic mode enables multiple image segments of the same eye to be quickly joined together to create a seamless wide-field view of the retina.

## TELEMEDICINE

Capture, review, access, and store your data from any location, regardless of your telemedicine model. The imageSPECTRUM Server can schedule the transmission of studies from client-to-server or server-to-server when optimal bandwidth is available.

## READING CENTERS

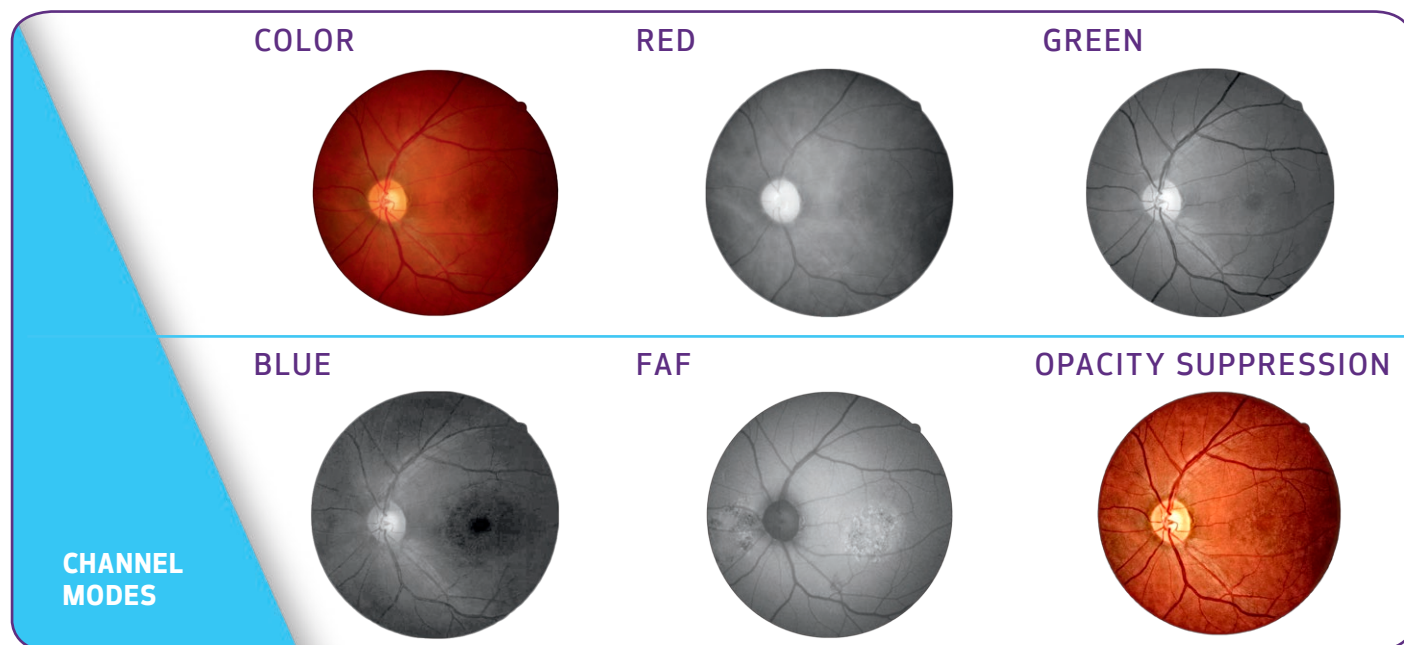
Grading feature allows retinal images to be reviewed by multiple graders for fast and efficient diagnosis.

## CUP-TO-DISC RATIO MEASUREMENT

Vertical cup-to-disc ratio is useful in identifying glaucomatous damage and can be valuable in the evaluation of tilted or small discs.

## IMAGE ANNOTATION TOOLS

Valuable annotation and measurement tools include PDT marker, macular grid, laser treatment patterns, and more.



# imageSPECTRUM

## FITS EASILY INTO NEARLY ANY BUSINESS ENVIRONMENT

Being DICOM-compliant allows imageSPECTRUM to be quickly and easily integrated into a wide range of existing network configurations. Whether your practice uses a single digital camera or multiple retinal exam workstations that are fully networked across multiple sites, imageSPECTRUM can be scaled to meet your needs. It can be readily integrated into your existing networks as well as with other DICOM-compatible medical imaging devices, data storage devices, and servers. Furthermore, imageSPECTRUM can be configured so that the patient's entire history is kept in a single repository and easily accessible from any location.



### MINIMUM SPECIFICATIONS

#### imageSPECTRUM DIGITAL IMAGE MANAGEMENT SYSTEM SOFTWARE

#### HARDWARE

- Processor  
Intel® Core i7, 2 GHz or Better  
(64-bit Version)
- RAM  
4 GB
- Hard Drive (Type/Size)  
SATA/500 GB+ (RAID Preferred)
- Graphics Card  
256 MB of Memory

- Network Card (Type/Size)  
100 Mbps or Better, Full Duplex
- Monitor Type  
Color Monitor/LCD Display,  
600:1 Contrast Resolution or  
Better, High Luminance
- Screen Resolution  
1600 x 1200 dpi

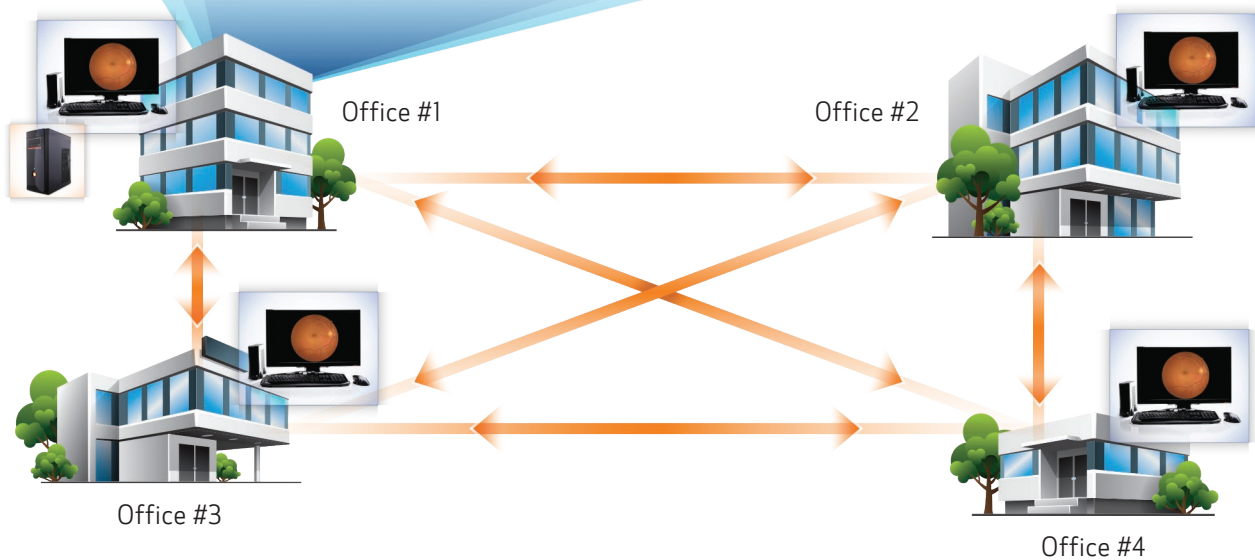
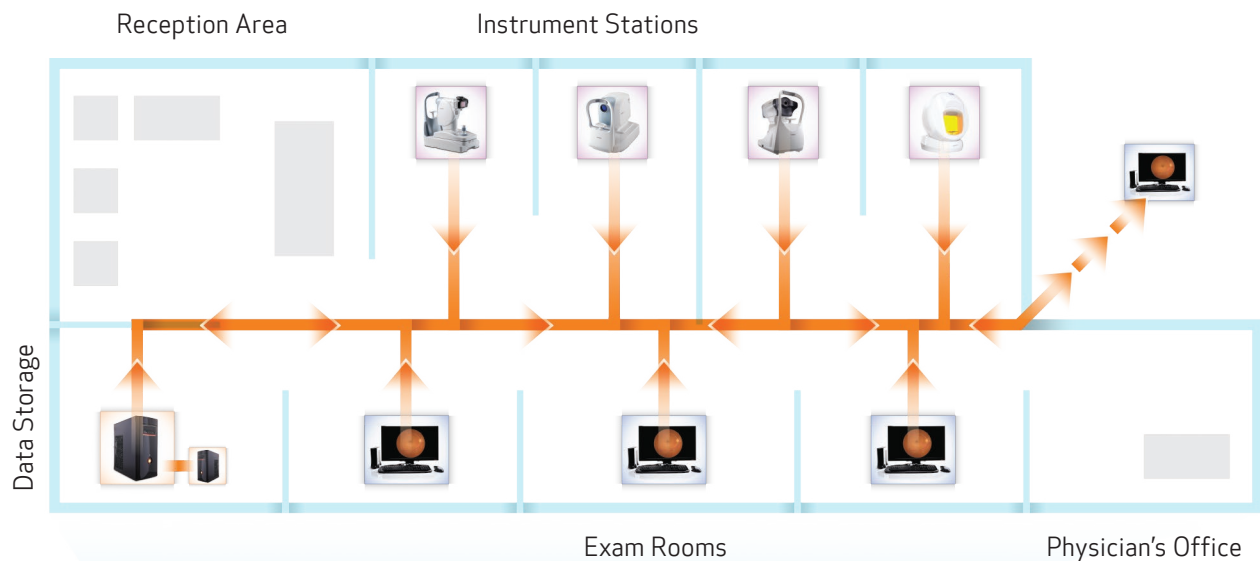
#### SOFTWARE

- Operating System Windows® 7  
Pro, SP1 (subject to change)

# SUPPORTS YOUR PRACTICE TODAY AND IN THE FUTURE.

imageSPECTRUM can be easily configured to support virtually any practice network, small or large. Designed with your growing practice in mind, this system is readily scalable. This means that imageSPECTRUM cannot only support the needs of your current practice, but it can also easily expand as your practice grows or your needs change, protecting your initial investment.

## ▼ A SINGLE-SITE NETWORK WITH MULTIPLE EXAM ROOMS ▼



## ▲ A MULTISITE NETWORK WITH MULTIPLE EXAM ROOMS ▲

# EYE CARE SOLUTIONS

ADVANCED DIAGNOSTIC EQUIPMENT FROM CANON

Canon U.S.A., Inc. provides a full line of digital diagnostic imaging and measurement devices for your practice.

## ▶ Retinal Cameras



**CR-2 AF**  
Digital Non-Mydriatic  
Retinal Camera



**CR-2 PLUS AF**  
Digital Non-Mydriatic  
Retinal Camera (with FAF)



**CF-1**  
Digital Mydriatic  
Retinal Camera



**CX-1**  
Hybrid Digital Mydriatic/Non-Mydriatic  
Retinal Camera (with FAF)

## ▶ Measurement Equipment



**TX-20**  
Full Auto Tonometer



**RK-F2**  
Full Auto Ref-Keratometer

## ▶ Software



**POST SALE  
SERVICE AND  
SUPPORT**

## MAINTAINING YOUR INVESTMENT IN EXCELLENCE.

The imageSPECTRUM Advanced Digital Image Management System is backed by Canon, a global microprocessor-based company with 75 years of optical experience. Its superb customer service and support organization is ready to answer your needs 24/7/365.

This common sense approach to service allows you to purchase a service plan that suits your specific needs—and your budget. The Canon service program may help you avoid costly instrument downtime while also helping you with the accessibility of your vital patient images and information.

**To schedule a demo or for additional information,  
call 1-800-970-7227 or visit our Web site.**

[USA.CANON.COM/EYE-CARE](http://USA.CANON.COM/EYE-CARE)



Canon is a registered trademark of Canon Inc. in the United States and may also be a registered trademark or trademark in other countries. DICOM is a registered trademark of the National Electrical Manufacturers Association for its standards publications relating to digital communications of medical information. Windows is a registered trademark of the Microsoft Corporation in the United States and/or other countries. Intel is a registered trademark of Intel Corporation in the U.S. and/or other countries. All other referenced product names and marks are trademarks of their respective owners. Specifications and availability subject to change without notice. Not responsible for typographical errors.  
©2016 Canon U.S.A., Inc. All rights reserved.