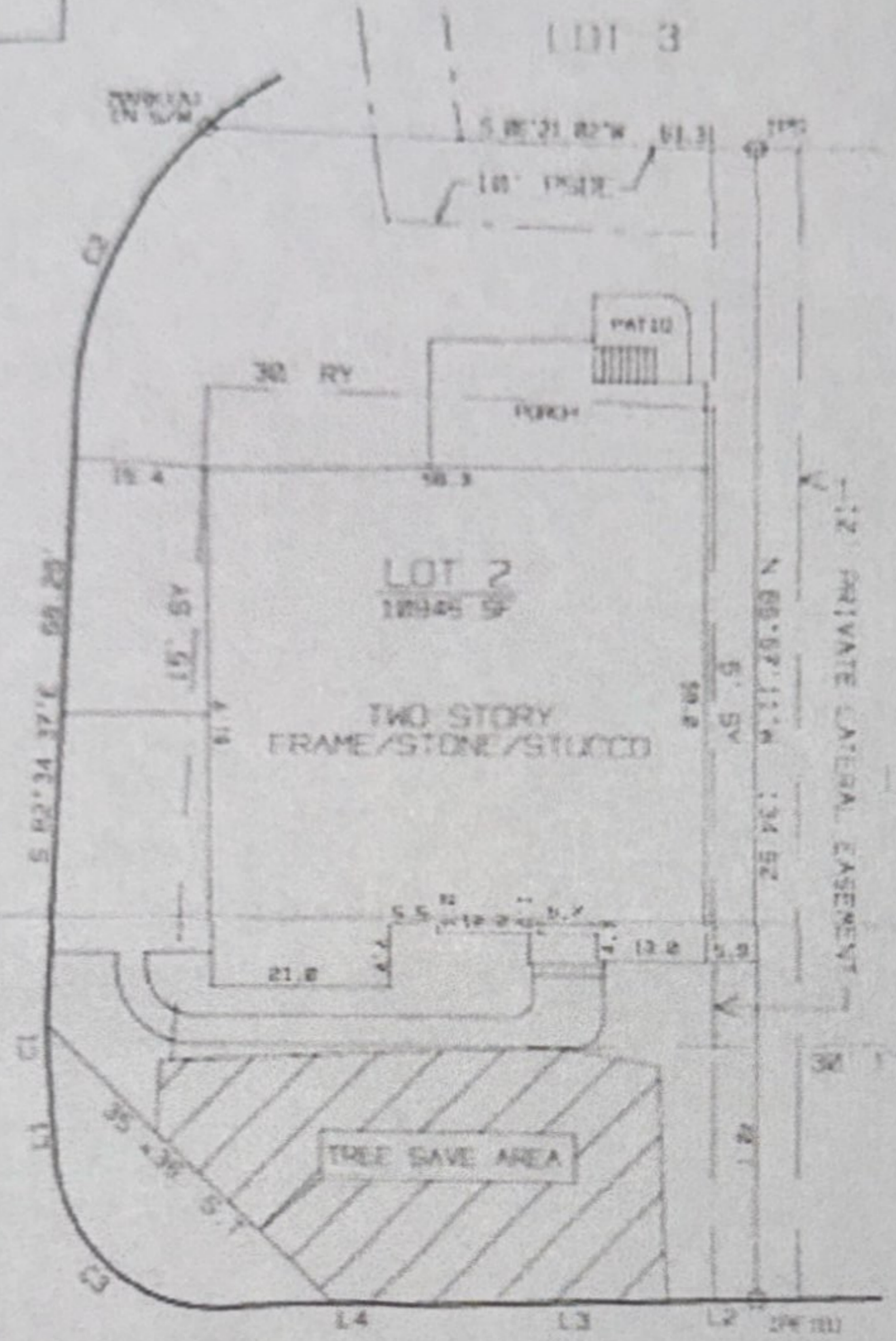


MELODY WOODS COURT
42' R/W



WILLOW OAK ROAD
VARIABLE R/W

TIES.

NAIL IN N 70°25'24"E S 02'
TO A NAIL IN B/L
DEP'D N 56°25'21"W 48.75'
TO A NAIL IN PAVEMENT

LINE	BEARING	DISTANCE
L 1	S 89°42'54"E	4.95
L 2	N 82°35'49"E	9.35
L 3	N 81°51'26"E	21.04
L 4	N 81°44'42"E	24.77

CURVE	DELTA ANGLE	RADIUS	ARC	TANGENT	CHORD	CHORD BEARING
C 1	7°05'17"	130.00	10.12	0.87	10.11	S 80°24'42"E
C 2	44°22'55"	50.00	30.44	20.23	37.50	S 60°33'20"E
C 3	89°34'25"	20.00	30.92	19.51	28.93	N 40°21'54"E

NOTE: U.S. UTILITIES IN AREA
SERVING OTHER PROPERTIES.
THIS PROPERTY SUBJECT TO ANY EASEMENTS
AND/OR RIGHT-OF-WAYS OF RECORD.
SEE RECORD PLAT FOR FURTHER NOTES.

- IPF - IRON PIN FOUND
- IPS - IRON PIN SET
- BC - BACK OF CURB
- CM - CONCRETE MONUMENT
- PSDE - PUBLIC STORM DRAIN
EASEMENT
- S.T. - SIGHT TRIANGLE
- COS - COMMON OPEN SPACE
- FT - FRONT YARD

PHYSICAL SURVEY

3157 WILLOW OAK ROAD
LOT 2 OF WILLOW OAK ROAD SITE
CITY OF CHARLOTTE, MECKLENBURG COUNTY, N.C.