

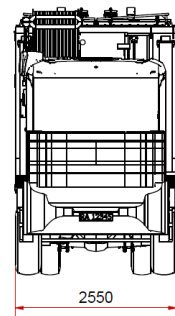
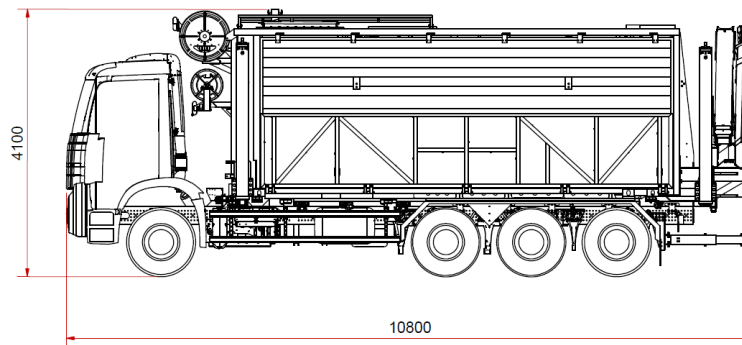
TECHNICAL SPESIFICATION

Grouting Unit AMV 100-4

Rev. 0, 25.02.2020 TAA

1. Main Dimensions / Weight

- Overview Drawing:



- Length: 11800 mm
- Width: 2550 mm
- Height: 4100 mm
- Weight: approx. 31 000 kg

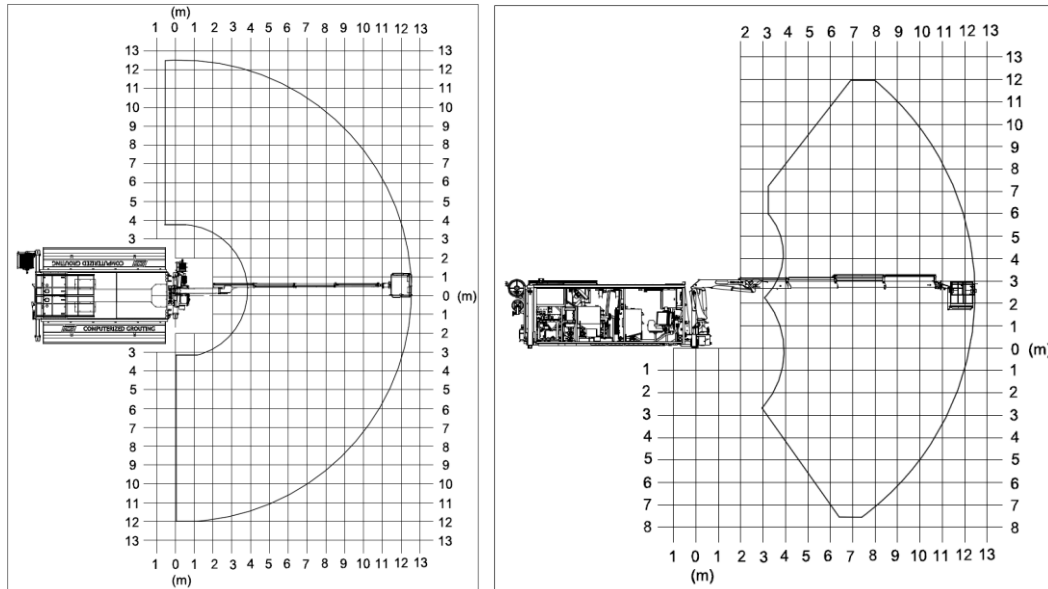
2. Main Components

- Two 55 kW motors
- Cable reel for power cable
- Water hose reel (Option)
- Two reels for grouting hoses (Option)
- Four ZMP 710 Grout pumps
- Two 550L HCM Mixers
- Two 800L HRW Agitators
- Two 1,3m³ cement silos
- Three additive pumps (slurry and additives)
- Accelerator pump (Option)
- Antifreeze system (Option)
- Crane with work basket, SWL = 225 kg

3. Chassis

- Type: Mercedes-Benz Arocs 5 3235LK 8x4
- Engine: Diesel, 260kW (354HK), Euro 6
- Electric system: 28V, 150 A Dynamo
- Gearbox: 12 speed automatic
- Braking system: Disc brakes
- Suspension: Air
- Diesel tank: 290L
- AdBlue tank: 60L

4. Boom – Coverage area



- Palfinger PK-16002HPB
- Proportional controlled boom movements by joystick and switches

5. Lubrication

- Manual lubrication points on grout pumps, cylinder attachments and Palfinger crane.
- Automatic lubricator on mixer impeller by grease cartridge

6. Hydraulic System

Power source:	Electro-hydraulic
Hydraulic oil volume:	Approx. 700 L
Hydraulic pumps:	Variable axial piston pumps + fixed displacement piston pumps
Sys. press.:	Approx. 270 bar
Sys. press. Grout pump:	Approx. 230 bar.
Oil cooling:	Oil-air coolers prop. controlled fan speed.
Oil type:	Shell Tellus S2 V 46 / Shell Naturelle HF-E-46
Filters:	Return oil filter, 10 my absolute Leak oil filter, 10 my absolute Breather filter, 2 my absolute

7. Electrical system

Voltage: 1000VAC / 400VAC
Transformer: 63KVA, Input voltage: 1000V/690V/400V, output voltage 400V
Control system: PLC using Profibus and CAN-Bus for controlling and communication
EI-cable: 120m 3x70q or 150m 3x35q
Lighting: 24V LED
An industrial PC with TeamViewer is installed for remote help/assistance.
Total installed power is 160 kW

8. Water / Air / Accelerator / Filmo/ Antifreeze -system

Water:

- High pressure washer: 15 L/min, 150 bar 400 VAC 3-phase
- Water hose reel(option): 30m 1,5" or 50m 5/4" hose mounted on hydraulically operated reel.
- Spray pistol and spring-operated hose reel for cleaning of the machine.

Air:

- Electrically operated piston compressor, max 440L/min @ 6 Bar
- Size of air reservoir is 80L
- Service outlet for air in work basket, on the back of the container and on each side of the container.

Accelerator pump(option):

- Membrane pump, max 60 Bar and 9,9L/min
- 1,5kW 3-phase 400V motor
- The pump is controlled from the operation panel.

Filmo:

- 25L pressurized tank
- Spray pistol and spring-operated hose reel mounted on the rear of the machine.

Antifreeze (Option):

- 25L pressurized tank

9. Fire Suppression System

- Semi-automatic fire suppression system in engine department
- Manual activation switch on each side of the chassis

10. Miscellaneous

- Surface treatment: 2-component epoxy-paint, RAL 1007
- Documentation / signs: Norwegian / English, paper + digital PDF
- Operational limitations: -20°C to +30°C ambient temperature