

LIUGONG 924FE SLR

SPECIFICATIONS



PERFORMANCE PARAMETERS

Operating Weight	26,500 kg
Std. Bucket Capacity	0.5 m ³
Maximum Travel Speed	5.6 km/h
Swing Speed	10.5 rpm
Drawbar Pull	220 kN
Bucket Digging Force (ISO)	153 kN
Arm Digging Force (ISO)	105 kN

ELECTRIC SYSTEM

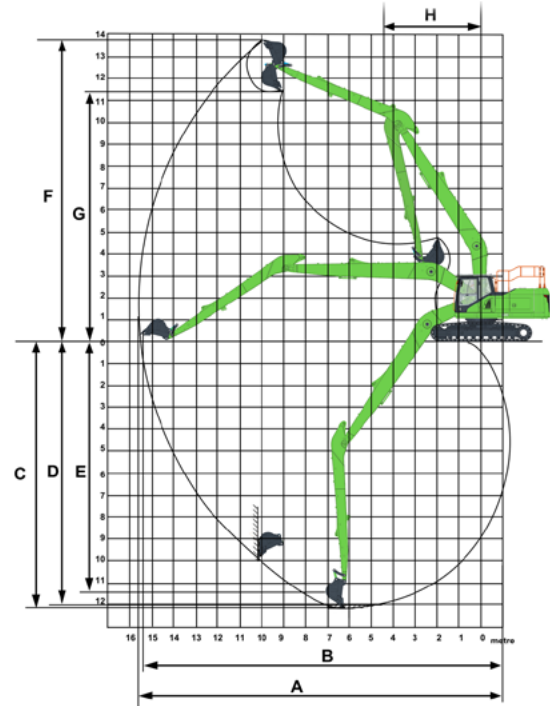
Motor Type	IPMSM
Battery	LFP
Rated Storage Capacity	423 kWh
Rated Voltage	618 V
Charging Time (240kW Charging Pile)	≤ 95 min (SOC 12% ~ 95%)
Charging Port	DC Charging

UNDERCARRIAGE

Number of Shoes per Side	49
Number of Bottom Rollers per Side	8
Number of Upper Rollers per Side	2

DIMENSIONS

A Shipping Length	14,650 mm
B Shipping Height	3,450 mm
C Track Gauge	2,390 mm
D Undercarriage Width (with 800 mm Track-shoes)	3,190 mm
E Length to Center of Rollers	3,840 mm
F Track Length	4,650 mm
G Overall Width of Upper Structure	2,850 mm
H Tail Swing Radius	3,130 mm
I Counterweight Ground Clearance	1,060 mm
J Overall Height of Cab	2,980 mm
K Min. Ground Clearance	470 mm



WORKING RANGE

Boom Length	8,850 mm
Arm Length	6,250 mm
A Max. Digging Reach	15,650 mm
B Max. Digging Reach on Ground	15,530 mm
C Max. Digging Depth	12,175 mm
D Max. Digging Depth, 2.5 m (8') Level	12,020 mm
E Max. Vertical Wall Digging Depth	9,990 mm
F Max. Cutting Height	13,730 mm
G Max. Dumping Height	11,335 mm
H Min. Front Swing Radius	4,420 mm

HYDRAULIC SYSTEM

Main Pumps Total Flow	2 x 228 L/min
Relief Pressure, main	34.3 MPa
Relief Pressure, boost	37.3 MPa

SERVICE CAPACITIES

Cooling System	25 L
Hydraulic Reservoir	112 L
Hydraulic System Total	220 L

