



RAVI MATHS TUITION CENTRE , WHATSAPP - 8056206308

Time : 100 Mins

BIOLOGY TEST 65 HUMAN HEALTH AND DISEASES 1

Marks : 373

- Which of the following is the bacterial disease in humans?
a) Pneumonia b) Malaria c) Plague d) Both (a) and (c)
- The cell in the human body invaded by the (human immuno-deficiency virus (HIV) is____
a) T-helpercell b) Erythrocyte c) B-cell d) Macrophage
- The infectious stage of plamodium that enters the human body is _____.
a) Female gametocytes b) Male gametocytes c) Trophozoites d) Sporozoites
- Name the chronic respiratory disorder caused mainly by cigarette smoking
a) Respiratoryalkalosis b) Emphysema c) Asthma d) Respiratory acidosis
- Which of the following is not a lymphoid tissue?
a) Spleen b) Tonsils c) Pancreas d) Thymus
- Assertion:** Benign tumours are called neoplastic cells.
Reason: Malignant tumour remain in place to form a compact mass by a process known as metastasis.
a) If both assertion and reason are true and reason is the correct explanation of assertion.
b) If both assertion and reason are true but reason is not the correct explanation of assertion.
c) If assertion is true but reason is false. d) If assertion is true but reason is false.
- Haemozoin is a
a) precursor of haemoglobin b) toxin released from Streptococcus infected cells
c) toxin released from Plasmodium infected cells d) toxin released from Haemophilus infected cells
- Short-lived immunity acquired from mother to foetus across placenta or through mother's milk to the infant is categorised as____
a) innate non-specific immunity b) active immunity c) passive immunity d) cellular immunity
- Typhoid fever is caused by_____.
a) Giardia b) Salmonella c) Shigella d) Escherichia
- The first line of defence in the immune system is provided by
a) skin and mucous membrane b) inflammatory response c) the complement system d) none of these
- Which of the following is not a cause of transmission of HIV?
a) Multiple sexual partners b) Sharing infected needles c) Mosquito bite
d) Transfusion of contaminated blood
- Cancer cells are more easily damaged by radiation than normal cells because they are____
a) starved of mutation b) undergoing rapid division c) different in structure d) non-dividing
- In which disease does mosquito transmitted pathogen Causes chronic inflammation of lymphatic vessels?
a) Ringworm disease b) Ascariasis c) Elephantiasis d) Amoebiasis
- U8 L.S.D. is____
a) hallucinogenic b) sedative c) stimulant d) tranquiliser
- Identify the correct pair representing the causative agent of typhoid fever and the confirmatory test for typhoid _____.
a) Streptococcus pneumoniae/Widal test b) Salmonella typhi/Anthrone test c) Salmonella typhi/Widal test
d) Plasmodium vivax/UTI test

JOIN PAID GROUP RS.4000 FOR 1 YEAR OR PAY MONTHLY RS.500

16. Which of the following pathogens causes whooping cough?
 a) Legionella sp. b) Bordetella pertussis c) Vibrio cholerae d) Brucella melitensis
17. Which of the following statements regarding different barriers of innate immunity is not correct?
 a)
 Acid present in the stomach, saliva in the mouth, tears from the eyes prevent the growth of microorganisms and constitute physiological barriers of our body
 b)
 Mucous membrane lining the respiratory, gastrointestinal and urinogenital tracts helps in trapping the microbes and constitute physiological barriers of our body.
 c)
 Certain types of leucocytes such as polymorphonuclear leucocytes (PMNL-neutrophils) and lymphocytes such as natural killer cells, constitute cellular barriers of our body.
 d)
 Virus-infected cells secrete proteins called interferons which protect non-infected cells from further viral infection and constitute cytokine barriers of our body.
18. **Assertion** : Virus-infected cells secrete proteins known as interferons.
Reason : Interferons protect the non-infected cells from bacterial infection.
 a) If both assertion and reason are true and reason is the correct explanation of assertion.
 b) If both assertion and reason are true but reason is not the correct explanation of assertion.
 c) If assertion is true but reason is false. d) If both assertion and reason are false.
19. The drugs used to quickly reduce the symptoms of allergy are
 a) anti-histamine and adrenaline b) histamine and thyroxine c) adrenaline and α -interferon d) all of these
20. AIDS is widely diagnosed by
 a) Widal test b) ELISA c) PCR d) Chromatography
21. The genes causing cancer are
 a) structural genes b) expressor genes c) oncogenes d) regulatory genes
22. The letter T in T-lymphocyte refers to _____
 a) Thalamus b) Tonsil c) Thymus d) Thyroid
23. A hospital technician, while doing some routine culturing of microorganisms in a lab, noticed a bacterial colony growing on a culture medium containing three different antibiotics. He identified the bacterium as one that did not cause a human disease, but he still reported his observation to the hospital administration. He was worried because
 a) he had no way of killing this bacterium now that it was resistant to antibiotics
 b) resistance to antibiotics could be transferred to disease-causing bacteria by transduction or conjugation
 c) the bacterium might feed on the antibiotics and therefore, be able to grow in people taking these antibiotics
 d) if people accidentally eat contaminated food inside the hospital, they would become resistant to the antibiotic
24. A person showing unpredictable moods, outbursts of emotion, quarrelsome behaviour and conflicts with other is suffering from _____
 a) Borderline personality disorder (BPD) b) Mood disorders c) Addictive disorders d) Schizophrenia
25. The lymphoid tissue, located within the lining of digestive tract is
 a) lymph nodes b) MALT c) spleen d) Peyer's patches
26. ELISA is used to detect viruses where the key reagent is _____ .
 a) RNase b) alkaline phosphatase c) catalase d) DNA probe
27. Which of the following is correct regarding AIDS causative agent HIV?

- a)
HIV is enveloped virus containing one molecule of single stranded RNA and one molecule of reverse transcriptase
- b)
HIV is enveloped virus that contains two identical molecules of single stranded RNA and two molecules of reverse transcriptase
- c) HIV is unenveloped retrovirus d) HIV does not escape but attacks the acquired immune response
28. AIDS is caused by HIV that principally infects____
a) all lymphocytes b) activator B cells c) cytotoxic T cells d) T₄ lymphocytes
29. Select the correct option showing the life cycle of Plasmodium.
a)
Sporozoites (human) → RBCs → liver cells → gametocytes in blood → blood meal, bite (female mosquito) → fertilisation (mosquito) → sporozoites (mosquito)
- b)
Sporozoites (human) → liver cells → RBCs → gametocytes in blood → blood meal, bite (female mosquito) → fertilisation (mosquito) → sporozoites (mosquito)
- c)
Gametocytes (mosquito) → bite → gametocytes (human) → RBCs → fertilisation (human) → sporozoites blood meal (human) → bite → sporozoites (female mosquito) → multiply (mosquito) → gametocytes (mosquito)
- d)
Sporozoites (human) → liver cells → gametocytes in blood → blood meal, bite (female mosquito) → gametocytes multiply (mosquito) → sporozoites (mosquito)
30. Ringworm in humans is caused by____
a) Bacteria b) Fungi c) Nematodes d) Viruses
31. HIV that causes AIDS, first starts destroying____
a) Leucocytes b) Helper T- Lymphocytes c) Thrombocytes d) B- Lymphocytes
32. Which of the following diseases is transmitted by the bite of the female mosquito vector?
a) Filariasis b) Amoebiasis c) Typhoid d) Pneumonia
33. Which one of the following depresses brain activity and produced feelings of calmness, relaxation and drowsiness?
a) Hashish b) Morphine c) Valium d) Amphetamines
34. AIDS virus has
a) Single strand DNA b) Double strand DNA c) Single strand RNA d) Double strand RNA
35. Select the mismatched pair.

a)

Name of the plant	Plant part	Drug obtained
Erythroxylon coca	Leaves and young twigs	Cocaine

b)

Name of the plant	Plant part	Drug obtained
Claviceps purpurea	Fruiting bodies	Lysergic acid diethylamide (LSD)

c)

Name of the plant	Plant part	Drug obtained
Cannabis sativa	Leaves, resin and inflorescence	Bhang, hashish

d)

Name of the plant	Plant part	Drug obtained
Thea chinensis	Dried seeds	Mescaline

36. **Assertion** : Proto-oncogenes are cellular genes required for normal growth.

Reason : Under normal conditions they could lead to the oncogenic transformation of the cell.

NEET MONTHWISE TEST AND NOTES SCHEDULE 2026

JOIN MY NEET PAID WHATSAPP TEST GROUP WITH
ANSWERS.

ONE TIME FEES RS.4000 TILL 2026 FINAL EXAM.
WHATSAPP – 8056206308

JOIN MARCH 2026 TO TILL EXAM FEES RS.1500

EVERY MONTH APPROXIMATELY 20 TO 30 PAPERS
UPLOAD IN MY PAID GROUP

MAY SCHEDULE

PLANT KINGDOM	ANIMAL KINGDOM	BREATHING AND EXCHANGE OF GASES
ORGANIC CHEMISTRY	SOLUTIONS	THERMODYNAMICS
WORK POWER ENERGY	MOTION OF SYSTEM OF PARTICLES AND RIGID BODY	LOCOMOTION AND MOVEMENT

JUNE SCHEDULE

LIVING WORLD Q	BIOLOGICAL CLASSIFICATION	HUMAN REPRODUCTION
REPRODUCTIVE HEALTH	HUMAN HEALTH AND DISEASES	ECOSYSTEM
GRAVITATION	KINEMATICS	CELL UNIT OF LIFE

JULY SCHEDULE

CELL CYCLE AND CELL DIVISION	EVOLUTION	STRUCTURE OF ATOM
EQUILIBRIUM	ELECTROCHEMISTRY	CHEMICAL KINETICS
REDOX REACTION	d f BLOCK ELEMENTS	LAWS OF MOTION

AUGUST SCHEDULE

STRUCTURAL ORGANISATION IN ANIMALS	MICROBES IN HUMAN WELFARE	BIOTECHNOLOGY PRINCIPLES AND PROCESS
BIOTECHNOLOGY AND ITS	ORGANISMS AND	CHEMICAL BONDING AND

WEBSITE www.ravitestpapers.com BLOG www.ravitestpapers.in

IN MY PAID GROUP MONTHLY YOU CAN CUSTOMIZE ANY 10 TEST PAPERS
ACCORDING TO YOUR REQUIRED CHAPTERS

JOIN PAID GROUP RS.4000 FOR 1 YEAR OR PAY MONTHLY RS.500

RAVI TEST PAPERS & NOTES, WHATSAPP – 8056206308

APPLICATIONS	APPLICATIONS	MOLECULAR STRUCTURE
CLASSIFICATION OF ELEMENTS AND PERIODICITY IN PROPERTIES	P BLOCK ELEMENTS	OSCILLATIONS' AND WAVES

SEPTEMBER SCHEDULE

MOLECULAR BASIS OF INHERITANCE	BIODIVERSITY AND CONVERSATION	ENVIRONMENTAL ISSUES
BASIC CONCEPTS OF CHEMISTRY	ORGANIC CHEMISTRY SOME BASIC PRINCIPLES AND TECHNIQUES	REDOX REACTION
COORDINATION COMPOUNDS	MAGNETIC EFFECTS AND MAGNETISM	ELECTROMAGNETIC INDUCTION AND ALTERNATING CURRENTS

OCTOBER SCHEDULE

MORPHOLOGY OF FLOWERING PLANTS	ANATOMY OF FLOWERING PLANTS	SEXUAL REPRODUCTION IN FLOWERING PLANTS
PRINCIPLES OF INHERITANCE AND VARIATION	ALDEHYDES' KETONES CARBOXYLIC ACIDS	ORGANIC COMPOUNDS CONTAING NITROGEN
HALOALKANES' AND HALOARENES	ALCOHOL, PHENOL AND ETHERS	PHYSICAL WORLD AND MEASUREMENT
OPTICS	DUAL NATURE OF MATTER AND RADIATION	SEMICONDUCTOR ELECTRONIC DEVICES

NOVEMBER SCHEDULE

RESPIRATION OF PLANTS	PLANT GROWTH AND DEVELOPMENT	BODY FLUIDS AND CIRCULATION
NEURAL CONTROL AND COORDINATION	STRATIGES FOR ENHANCEMENT IN FOOD PRODUCTION	HYDROCARBONS
BIOMOLECULES	CLASSIFICATION & NOMENCLATURE	ATOMS AND NUCLAI

DECEMBER TO MAY SCHEDULE

BALANCE TOPICS & PYQS UPLOAD FROM DECEMBER TO JANUARY

FEBRUARY & MARCH TILL BOARDS NO TESTS

MARCH TO TILL MAY FINALS FULL 120 MOCK TESTS EVERYDAY 3 PAPERS

WEBSITE www.ravitestpapers.com BLOG www.ravitestpapers.in

IN MY PAID GROUP MONTHLY **YOU CAN CUSTOMIZE ANY 10 TEST PAPERS**

ACCORDING TO YOUR REQUIRED CHAPTERS

JOIN PAID GROUP RS.4000 FOR 1 YEAR OR PAY MONTHLY RS.500

RAVI TEST PAPERS & NOTES WHATSAPP – 8056206308

JOIN MY NEET PAID WHATSAPP TEST GROUP WITH ANSWERS.

ONE TIME FEES RS.4000 TILL 2026 FINAL EXAM

UPLOAD 500+ PRACTICE PAPERS FOR 1 YEAR

NEET/ JEE MCQS PDF SALES

**ENGLISH
MEDIUM**

**PHYSICS
CHEMISTRY
BIOLOGY**

**26000+
MCQS**

**COST
RS.2500**

**JEE MATHS
MAIN &
ADVANCE**

**COST
RS.1000**

**NEET 10
MOCK
TESTS COST
RS.500**

**நீட் தமிழ்
மீடியம்
இயற்பியல்
வேதியல்
உயிரியல்
17000+
MCQS**

**COST
RS.1500**

WHATSAPP – 8056206308

CLICK LINK AND JOIN MY FREE WHATSAPP
SCHOOL TEST GROUPS

- NEET நீட் JEE 2025-26 TEST GROUP
- CBSE 6TH TO 12TH 2025 - 26 FREE COMMON TEST GROUP
- TN 6TH TO 12TH 2025 - 26 FREE COMMON TEST GROUP
- NEET JEE TELEGRAM TEST GROUP
- CBSE SAMACHEER KALVI SCHOOL TEST GROUP

Contact Form OR WHATSAPP 8056206308

CHECK MY BLOGGER

www.ravitestpapers.in

**END OF THE PAGE ALL
CLASS WHATSAPP TEST
GROUP LINK GIVEN**

**JUST CLICK ON LINK
AND JOIN MY ANY
GROUP**

லிங்கை க்ளிக் செய்து வாட்ஸாப்
TNPSC தேர்வுகள் குரூப்பில்
இணையலாம்

- TNPSC TET SI EXAM WHATSAPP TEST GROUP LINK
- TNPSC TELEGRAM APP TEST GROUP LINK

JOIN PAID GROUP RS.4000 FOR 1 YEAR OR PAY MONTHLY RS.500

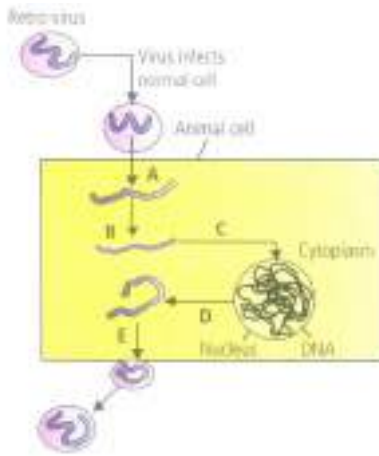
- a) If both assertion and reason are true and reason is the correct explanation of assertion.
 b) If both assertion and reason are true but reason is not the correct explanation of assertion.
 c) If assertion is true but reason is false. d) If assertion is true but reason is false.
37. Select the correct option to fill up the blanks.
 (i) Diseases which are easily transmitted from one person to another, are called _____ diseases.
 (ii) In human body, parasite of malaria initially multiplies within the _____ and then attack the _____
 (iii) _____ is the yellowish fluid secreted by mother during the initial days of lactation.
 (iv) _____ and _____ are the primary lymphoid organs.
 a) (i) infectious, (ii) bone marrow, thymus, (iii) Colostrum, (iv) Liver cell, RBCs
 b) (i) infectious, (ii) liver cell, RBCs, (iii) Colostrum, (iv) Bone marrow, thymus
 c) (i) interferon, (ii) bone marrow, thymus, (iii) Colostrum, (iv) Liver cell, RBCs
 d) (i) infectious, (ii) liver cell, RBCs, (iii) Colostrum, (iv) Spleen, lymph node
38. Which drug is being excessively taken by some sports persons nowadays?
 a) Opioids b) Barbiturates c) Cannabinoids d) Lysergic acid diethyl amides (LSD)
39. Natality refers to _____
 a) number of individuals leaving the habitat b) birth rate c) death rate
 d) number of individuals entering a habitat
40. Match column I with column II and select the correct option from codes given below.
- | Column I | Column II |
|------------------------|---------------------------|
| A. Allergy | (i) Activation of B-cells |
| B. Helper T - cells | (ii) Immunotherapy |
| C. AIDS virus | (iii) Carcinogens |
| D. X-rays | (iv) IgE |
| E. Treatment of cancer | (v) Single stranded RNA |
- a) A-(iv), B-(i), C-M D-(iii), E-(ii) b) A-(ii), B-(i), C-(v), D-(iii), E-(iv) c) A-(iv), B-(v), C-(iii), D-(ii), E-(i)
 d) A-(ii), B-(v), C-(iii), D-(i), E-(iv)
41. Match the following diseases with the causative organism and select the correct option.
- | Column-I | Column-II |
|----------------|------------------|
| (a) Typhoid | (i) Wuchereria |
| (b) Pneumonia | (ii) Plasmodium |
| (c) Filariasis | (iii) Salmonella |
| (d) Malaria | (iv) Haemophilus |
- a) (ii) (i) (iii) (iv) b) (iv) (i) (ii) (iii) c) (i) (iii) (ii) (iv) d) (iii) (iv) (i) (ii)
42. Motile zygote of Plasmodium occurs in _____
 a) Gut of female Anopheles b) Salivary glands of Anopheles c) Human RBCs d) Human liver
43. Major factors that cause cancer are
 a) oncogenes and polymorphonuclear leucocytes b) oncogenes and tumour suppressor genes
 c) MHC genes d) cellular oncogenes and α -interferons
44. Which of the following disease has been eradicated from world by the use of vaccine?
 a) Plague b) Poliomyelitis c) Small pox d) Kala-azar
45. Match column I with column II and select the correct option from codes given below.
- | Column I | Column II |
|----------------|-----------------------------------|
| A. Sporozoites | (i) Infectious form of Plasmodium |
| B. Filariasis | (ii) Aedes mosquitoes |
| C. Typhoid | (iii) Wuchereria |
| D. Chikungunya | (iv) Widal test |

- a) A-(iv), B-(ii), C-(i), D-(iii) b) A-(iii), B-(iv), C-(ii), D-(i) c) A-(ii), B-(iii), C-(i), D-(iv)
d) A-(i), B-(iii), C-(iv), D-(ii)
46. The addictive chemical present in tobacco is
a) caffeine b) nicotine c) catechol d) carbon monoxide
47. Read the given statements carefully.
(i) Innate immunity is a specific type of defence, that is present at the time of birth.
(ii) Malignant malaria is caused by *Plasmodium falciparum*.
(iii) Malaria could be confirmed by Widal test.
(iv) Active immunity is slow and takes time to give its full effective response.
(v) Saliva in the mouth acts as physiological barrier for pathogens.
Which of the above statements are correct?
a) (ii), (iv) and (v) b) (i) and (iii) c) (i) and (v) d) (ii), (iii) and (v)
48. A substance produced by the host in response to an infection of foreign structure is
a) Antigen b) Phytotoxin c) Antibody d) Hormone
49. A chemical carcinogen present in tobacco smoke is responsible for
a) skin cancer b) pancreatic cancer c) stomach cancer d) lung cancer
50. Cancer cells do not exhibit the property of
a) generating tumors b) metastasis c) contact inhibition d) less number of mitochondrial cristae
51. The chemical compound whose chemical structure is given below is obtained from which plant?



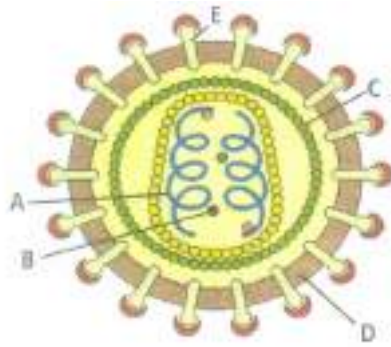
- a) *Papaver somniferum* b) *Erythroxylum coca* c) *Atropa belladonna* d) *Cannabis sativa*
52. The alkaloid ajmalicine is obtained from _____
a) *Atropa* b) *Papaver* c) *Curcuma* d) *Sarpgandha*
53. Which part of poppy plant is used to obtain the drug "Smack"?
a) Roots b) Latex c) Flowers d) Leaves
54. *Entamoeba histolytica* is transmitted through
a) Insect bite b) Sweat c) Food and water contamination d) Bird droppings
55. Read the following statements and select the correct option.
Statement 1: Active immunity is developed when a person's own cells produce antibodies in response to infection or vaccine.
Statement 2: Injection of snake antivenom against snake bite is an example of active immunisation.
a) Both statements 1 and 2 are correct b) Statement 1 is correct but statement 2 is incorrect
c) Statement 1 is incorrect but statement 2 is correct d) Both statements 1 and 2 are incorrect
56. Transplantation of tissues/organs fails often due to non-acceptance by the patient's body. Which type of immune-response is responsible for such reflection?
a) Autoimmune response b) Cell-mediated immune response c) Hormonal immune response
d) Physiological immune response
57. ELISA is used to detect viruses, where _____
a) DNA-probes are required b) Southern blotting is done c) Alkaline phosphatase is the key reagent
d) Catalase is the key reagent

58. The figure given below shows mode of action of AIDS virus. Identify steps A, B, C, D and E labelled in it.



- a)
A-New viral DNA introduced into cell, B-Viral RNA produced, C-Viral DNA incorporated into host genome, D-New viral DNA, E-New viruses produced
- b)
A-Viral DNA incorporated into host genome, B-Viral DNA, C-New viral RNA introduced, D-Viral RNA produced, E-New viruses produced
- c)
A-Viral RNA introduced, B-Viral DNA, C-Viral DNA incorporated into host genome, D-New viral RNA produced, E-New viruses produced
- d)
A-Viral DNA introduced, B-Viral RNA, C-Viral RNA incorporated into host genome, D-New viral DNA produced, E-New viruses produced
59. Which one of the following statements is correct?
a) Benign tumours spread to distant sites. b) Heroin accelerates body functions.
c) Malignant tumours exhibit metastasis.
d) Patients who have undergone surgery are given cannabinoids to relieve pain
60. Heroin is commonly called as
a) coke b) crack c) smack d) charas
61. Which of the following factors affect human health?
(i) Infections
(ii) Silent mutations
(iii) Life style
(iv) Genetic disorders
a) (i), (ii) and (iv) b) (i) and (ii) c) (i), (iii) and (iv) d) (i), (ii), (iii) and (iv)
62. Analgesic drugs _____
a) form tissues b) relieve pain c) relieve fatigue d) cause pain
63. DPT vaccination provides
a) Active immunity b) Passive immunity c) Nature immunity d) Both (1) & (2)
64. Which of the following components does not participate in innate immunity?
a) Neutrophils b) Macrophages c) B-lymphocytes d) Natural killer cells
65. Which of the following sexually transmitted diseases is not completely curable?
a) Genital warts b) Genital herpes c) Chlamydia d) Gonorrhoea
66. Passive immunity was discovered by _____
a) Edward Jenner b) Emil von Behring c) Robert Koch d) Louis Pasteur
67. Which one of the following acts as a physiological barrier to the entry of micro-organisms in human body?
a) Epithelium of urogenital tract b) Tears c) Monocytes d) Skin
68. AIDS is characterised by

- a) decrease in the number of killer T-cells b) decrease in the number of suppressor T-cells
c) decrease in the number of helper T-cells d) increase in the number of helper T-cells
69. Read the following statements and select the correct ones.
(i) Vaccine is a preparation (or suspension) of a dead/attenuated pathogen of a disease which on inoculation (or injection) into a healthy person provides temporary/permanent active immunity by inducing antibodies formation.
(ii) Immunisation is the process by which the body produces antibodies against the vaccine preventable diseases through administration of specific vaccines.
(iii) The principle of immunisation or vaccination is based on the property of 'memory' of the immune system.
(iv) If a person is infected with some deadly microbes to which quick immune response is required; in that case, we need to directly inject the preformed antibodies or antitoxins e.g., in case of tetanus.
a) (i) and (ii) b) (iii) and (iv) c) (i), (ii) and (iii) d) (i), (ii), (iii) and (iv)
70. A person likely to develop tetanus is immunised by administering _____
a) preformed antibodies b) wide spectrum antibiotics c) weakened germs d) dead germs
71. Which of these glands is large at the time of birth but in adults, it reduces to a very small size?
a) Thyroid b) Adrenal c) Thymus d) Spleen
72. Asthma may be attributed to :
a) Allergic reaction of the mast cells in the lungs b) Inflammation of trachea
c) Accumulation of fluid in lungs d) Bacterial infection of the lungs
73. Which form of pathogen is used in vaccination?
a) Activated and strong pathogenic antigens b) Inactivated and weakened pathogenic antigens
c) Hyperactive and strong pathogen d) Preformed antibodies
74. A metastatic cancerous tumour is termed 'sarcoma' if the disorder is in
a) fibroblasts b) circulatory system c) immune system d) epithelial cells
75. Which one of the following pairs is not correctly matched?
a) Dengue fever - Flavi-ribo virus b) Syphilis - Trichuris trichiura c) Plague - Yersinia pestis
d) Filariasis - Wuchereria bancrofti
76. Which one of the following is categorised as a parasite in true sense ?
a) The female Anopheles bites and sucks blood from humans
b) Human foetus developing inside the uterus draws nourishment from the mother
c) Head louse living on the human scalp as well as laying eggs on human hair
d) The cuckoo (koel) lays its eggs in crow's nest
77. Read the following statements regarding spleen and select the correct option.
(i) Spleen is a large oval-shaped organ which mainly contains lymphocytes and phagocytes.
(ii) Spleen is a large reservoir of erythrocytes.
(iii) Spleen is a primary lymphoid organ.
(iv) Spleen acts as a filter of the blood by trapping blood-borne microorganisms.
a) (i) and (ii) b) (ii) and (iv) c) (i), (ii) and (iii) d) (i), (ii) and (iv)
78. **Assertion** : Artificially acquired passive immunity results when antibodies or lymphocytes produced outside the host are introduced into a host.
Reason : A bone marrow transplant given to a patient with genetic immunodeficiency is an example of artificially acquired active immunity.
a) If both assertion and reason are true and reason is the correct explanation of assertion.
b) If both assertion and reason are true but reason is not the correct explanation of assertion.
c) If assertion is true but reason is false. d) If both assertion and reason are false.
79. Identify A, B, C, D and E in the given diagram of HIV virus.



- a) A-RNA, B-Reverse transcriptase, C-Capsule protein coat, D-Lipid membrane, E-Envelope protein coat
 b) A - RNA, B - Reverse transcriptase, C-lipid membrane, D-Envelope protein coat, E-Capsule protein coat
 c) A-Reverse transcriptase, B-Lipid membrane, C-RNA, D-Capsule protein coat, E-Envelope protein coat
 d) A-RNA, B-Reverse transcriptase, C-Envelope protein coat, D-Lipid membrane, E-Capsule protein coat
80. Which of the following are the reason(s) for Rheumatoid arthritis? Choose the correct option.
 (i) The ability to differentiate pathogens or foreign molecules from self cells increases.
 (ii) Body attacks self cells
 (iii) More antibodies are produced in the body
 (iv) The ability to differentiate pathogens or foreign molecules from self cells is lost.
 a) (i) and (ii) b) (ii) and (iv) c) (iii) and (iv) d) (i) and (iii)
81. In which one of the following pairs of diseases both are caused by viruses?
 a) Tetanus and typhoid b) Whooping cough and sleeping sickness c) Syphilis and AIDS
 d) Measles and rabies
82. Vaccine against polio viruses is an example of
 a) auto-immunisation b) passive immunisation c) active immunisation d) simple immunisation
83. Which one of the following statements is correct with respect to AIDS?
 a) The HIV can be transmitted through eating food together with an infected person
 b) Drug addicts are least susceptible to HIV infection
 c) AIDS patients are being fully cured cent per cent with proper care and nutrition
 d) The causative HIV retrovirus enters helper T- lymphocytes thus reducing their numbers
84. What is true about T-lymphocytes in mammals?
 a) These are produced in thyroid
 b) There are three main types - cytotoxic T-cells, helper T-cells and suppressor T-cells
 c) These originate in lymphoid tissues d) They scavenge damaged cells and cellular debris
85. If you suspect major deficiency of antibodies in a person, to which of the following would you look for confirmatory evidences?
 a) Serum albumins b) Haemocytes c) Serum globulins d) Fibrinogen in plasma
86. Which one of the following sets includes bacterial diseases?
 a) Tetanus, tuberculosis, measles b) Diphtheria, leprosy, plague c) Cholera, typhoid, mumps
 d) Malaria, mumps, poliomyelitis
87. Which of the following will be curable in next two decades?
 a) tuberculosis b) cancer c) polio myelitis d) None of these
88. ELISA is used in detection of
 a) Hay fever b) Tetanus c) AIDS d) Tuberculosis
89. Select the correct statement with respect to the given plants.



- a) Opium is dried latex obtained from the unripe capsular fruits of plant A.
b)
The drug obtained from plant C is cocaine that is a powerful CNS stimulant, which increases a person's mental alertness and physical activity
c)
Plant B belongs to Family Moraceae; bhang, ganja, charas and marijuana are the hallucinogenic products obtained from this plant
d) All of these
90. Which of the following diseases is due to an allergic reaction?
a) Goitre b) Hay fever c) Skin cancer d) Enteric fever
91. Antibodies present in colostrum which protect the new born from certain diseases is of
a) IgG type b) IgA type c) IgD type d) IgE type
92. Which one of the following is not correctly matched _____
a) Glossina palpalis - Sleeping sickness b) Culex pipiens - Filariasis c) Aedes aegypti - Yellow fever
d) Anopheles culicifacies - Leishmaniasis
93. The most abundant antibody produced against allergens is
a) IgE b) IgA c) IgG d) IgM
94. **Assertion** : Antiretroviral drugs are very effective in treatment against AIDS.
Reason : AIDS virus is a retrovirus with ssDNA as genetic material.
a) If both assertion and reason are true and reason is the correct explanation of assertion.
b) If both assertion and reason are true but reason is not the correct explanation of assertion.
c) If assertion is true but reason is false. d) If assertion is true but reason is false.
95. Cancerous cells can easily be destroyed by radiations due to _____
a) rapid cell division b) lack of nutrition c) fast mutation d) lack of oxygen
96. Along with nicotine, cigarette smokers receive tars, phenols, hydrocarbons, arsenic, and many other chemicals. Which of the following is not an effect of smoking tobacco?
a) Narrowing or hardening of blood vessels in the heart and brain
b) A higher frequency of respiratory infections (e.g., colds, pneumonia)
c) A higher risk of cancer, including cancer of the lungs, mouth, larynx, bladder and kidneys d) None of these
97. A certain patient is suspected to be suffering from acquired immune deficiency syndrome. Which diagnostic technique will you recommend for its detection?
a) ELISA b) MRI c) Ultrasound d) WIDAL
98. One of the following is not the causal organism for ringworm.
a) Microsporum b) Trichophyton c) Epidermophyton d) Macrosporum
99. Choose the incorrect statement w.r.t. AIDS
a) Viral RNA genome is converted into copy DNA by reverse transcriptase
b) It is caused by an enveloped retrovirus HIV c) It is an immunodeficiency disease
d) HIV selectively infects and kills B-lymphocytes
100. Which of the following endoparasites of humans does show viviparity ?
a) Enterobius vermicularis b) Trichinella spiralis c) Ascaris htmbricoides d) Ancylostoma duodenale