

## ANIMAL KINGDOM

1. The point by which Annelida advanced over Nematoda is
  - a) True coelom
  - b) Metameric segmentation
  - c) Closed circulation
  - d) All of the above
2. A transverse section of *Pheretima* taken through the 10<sup>th</sup> segment is observed in microscope. Which of the following structures can be observed in the section?
  - a) Stomach, dorsal blood vessel, ventral blood vessel, supraoesophageal vessel, anterior loops, ring vessel and micronephridia
  - b) Stomach, dorsal blood vessel, ventral blood vessel, lateral hearts, ring vessels and pharyngeal nephridia
  - c) Intestine, dorsal blood vessel, ventral blood vessel, supraoesophageal vessel and septal nephridia
  - d) Stomach, dorsal blood vessel, sub-neural blood vessel and lateral hearts
3. *Sycon* belongs to a group of animals which are best described as
  - a) Multicellular with a gastrovascular system
  - b) Multicellular having tissue organization, but no body cavity
  - c) Unicellular or acellular
  - d) Multicellular without any tissue organization

**THIS TEST ANSWERS PDF FILES  
AVAILABLE IN MY WEBSITES**

**[www.ravitestpapers.com](http://www.ravitestpapers.com)**

**WHATSAPP – 8056206308**

4. In which one of the following the genus name, its two characters and its class/phylum are correctly matched?

Genus	Two characters	Class/phylum
a) <i>Salamandra</i> :	(i) A tympanum represents ear (ii) Fertilization is external	Amphibia
b) <i>Pteropus</i> :	(i) Skin possesses hair (ii) Oviparous	Mammalia
c) <i>Aurelia</i> :	(i) Cnidoblast (ii) Organ level	Coelenterata

WEBSITE [www.ravitestpapers.com](http://www.ravitestpapers.com) BLOG [www.ravitestpapers.in](http://www.ravitestpapers.in)

**JOIN MY PAID TEST GROUP WITH PDF ANSWERS**

of organization

- d) *Ascaris*: (i) Body Annelida segmented  
(ii) Males and females distinct
5. In frog's heart, there are muscular ridges which consist of fibers called  
a) Purkinje fibres                      b) Myonemes                      c) Telodendria                      d) Columna carnae
6. Which is not a feature of annelids?  
a) Metameric segmentation                      b) Nephridia  
c) Pseudocoelom                      d) Clitellum
7. Which one of the following kinds of animal are triploblastic?  
a) Flatworms                      b) Sponges                      c) Ctenophores                      d) Corals
8. Organ system level of organisation is observed in  
a) Chordates                      b) Annelids                      c) Molluscs                      d) All of these
9. Find the odd example.  
a) Sea lily                      b) Sea fan                      c) Sea cucumber                      d) Sea urchin
10. The snake eating snake is  
a) Black cobra                      b) King cobra                      c) Rattle snake                      d) Anaconda
11. Book lungs are respiratory organs in  
a) Scorpion                      b) Prawn                      c) Snail                      d) Cockroach
12. In *Pheretima*, the lateral hearts that connect the supra oesophageal blood vessel with ventral blood vessel are located in which segments?  
a) 7 and 9                      b) 18 and 19                      c) 14 and 15                      d) 12 and 13
13. Sea anemone belongs to phylum  
a) Protozoa                      b) Porifera                      c) Coelenterata                      d) Echinodermata
14. Trochophore is the larva of  
a) *Neopilina*                      b) *Chiton*                      c) *Pila*                      d) All of these
15. In the given diagram, what does 'A' represent?

# **NEET2025**

***sunday, may 4 2025***

## **TEST SERIES**

**26TH MARCH TO MAY 3RD - 39 DAYS**

**EVERYDAY 3 TO 5 TESTS PAPERS  
120 MOCK TEST PAPERS +  
SOME PREVIOUSLY ASKED QUESTIONS**

**TEST PAPERS UPLOAD TIME  
6AM/10AM/12NOON/6PM/10PM**

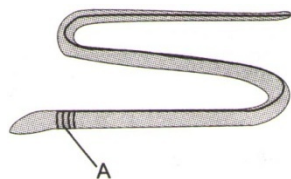
**INTERESTED JOIN IMMEDIATELY**

**FEES Rs.1500**

**WHATSAPP – 8056206308**

**FREE PAPERS AVAILABLE IN MY WEBSITE**

**[www.ravitestpapers.com](http://www.ravitestpapers.com)**



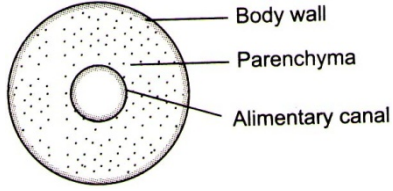
- a) Heart                      b) Lateral vessel                      c) Ventral vessel                      d) Dorsal vessel
16. Hydroskeleton is not found in  
a) Mollusca                      b) Echinoderms                      c) Annelida                      d) Cnidarian
17. Aschelminthes are usually  
a) Dioecious                      b) Hermaphrodites                      c) Metagenic                      d) Coelomates
18. Development of Mollusca is  
a) With a larvae named trocophore                      b) Always direct without larval stages  
c) With larvel stage called glochidium                      d) With larval stage called wriggler
19. Which character is not same in Aves and mammals?  
a) Single systemic arch                      b) Metanephric kidney  
c) Seven cervical vertebrae                      d) Homeotherms
20. Study the following features of a fish  
I. It is a crossopterygian fish  
II. It is found in the river Chalumnae  
III. It does not exhibit aestivation  
IV. It is an urecotelic animal  
Which of the above are true to '~~Neoceratodus~~'  
a) I and II                      b) II and IV                      c) I and III                      d) I and IV
21. In *Pheretima*, septa are absent between which segments?  
a) 3/4 and 9/10                      b) 4/5 and 8/9                      c) 5/6 and 7/8                      d) 7/8 and 6/7
22. In frogs, oviduct is formed by  
a) Wolffian duct                      b) Metanephric duct                      c) Mullerian duct                      d) Bidder's canal
23. The life span of honey bee drone is  
a) 3-4 months                      b) 1-2 months                      c) 6-7 months                      d) 10-12months
24. A group of animals having marsupium is  
a) Nonotremata                      b) Eutheria                      c) Metatheria                      d) Pantotheria
25. What will you look for to identity the sex of the following?

WEBSITE [www.ravitestpapers.com](http://www.ravitestpapers.com) BLOG [www.ravitestpapers.in](http://www.ravitestpapers.in)

JOIN MY PAID TEST GROUP WITH PDF ANSWERS

- a) Male frog – a copulatory pad on the first digit of the hind limb
- b) Female cockroach – anal cerci
- c) Male shark – claspers borne on pelvic fins
- d) Female *Ascaris* – sharply curved posterior end

**THIS TEST ANSWERS PDF FILES  
AVAILABLE IN MY WEBSITES**  
**[www.ravitestpapers.com](http://www.ravitestpapers.com)**  
**WHATSAPP – 8056206308**

26. The excretory cells, that are found in Platyhelminthes are
- a) Protonephridia                      b) Flame cells                      c) Solenocytes                      d) All of these
27. Ommatidia serve the purpose of photoreception in
- a) Humans                      b) Sunflower                      c) Cockroach                      d) Frog
28. *Periplaneta* has no respiratory pigment in its blood because
- a) Air is conducted directly to the body tissues                      b) It has haemocoelom
  - c) It has anaerobic respiration                      d) It lacks blood cells in the blood
29. *Wuchereria bancrofti* is a common filarial worm. It belongs to phylum
- a) Platyhelminthes                      b) Nematelminthes                      c) Annelida                      d) Coelenterata
30. The cross-section of the body of an invertebrate is given below. Identify the animal, which has this body plan.
- 
- a) Cockroach                      b) Roundworm                      c) *Planaria*                      d) Earthworm
31. In earthworm, the characteristic internal median fold of dorsal wall of the intestine called typhlosole is present in
- a) 5 to 9 segments                      b) 9 to 14 segments                      c) 26 to 35 segments                      d) 15 to last segment
32. Which of the following phyla are schizocoela?

- a) Annelida, Platyhelminthes and Mollusca  
b) Annelida, Arthropoda and Mollusca  
c) Platyhelminthes, Aschelminthes and Annelida  
d) Aschelminthes, Annelida and Mollusca
33. Columellaauris is found in  
a) Rabbit                      b) Frog                      c) Man                      d) All of these
34. Which one of the following is not a bird?  
a) Magpie                      b) Albatross                      c) Himalayan quail                      d) *Bufo*
35. Which of the following blood vessels in the circulatory system of frog has more oxygenated blood?  
a) Pulmocutaneous artery                      b) Pulmocutaneous vein  
c) Pulmonary artery                      d) Precaval veins
36. Which one of the following feature is common to leech, cockroach and scorpion?  
a) Nephridia                      b) Ventral nerve cord                      c) Cephalization                      d) Antennae
37. Which of the following cell types is capable of giving rise to other cell types in sponges?  
a) Thesocytes                      b) Pinacocytes                      c) Cnidocytes                      d) Archaeocytes
38. ~~Necturus~~ is commonly known as  
a) The flying frog                      b) The mud puppy                      c) The crested newt                      d) The toad
39. Which of the following display retrogressive metamorphosis?  
a) *Salpa* and *Herdmania*                      b) *Doliolum* and *Oikopleura*  
c) *Pyrosoma*                      d) All of these
40. Which of the following is true of Aves?  
a) They are poikilotherms and have a three chambered heart  
b) Tiny pebbles eaten by some birds and are used in crushing  
c) They have 10 pairs of cranial nerves  
d) All of the above
41. Which one of the following has a biradial symmetry?  
a) *Paramecium*                      b) Jellyfish                      c) Cockroach                      d) Sea anemone

42. Mouth part of housefly are
- a) Siphoning type
  - b) Sponging type
  - c) Biting and chewing type
  - d) Piercing and sucking type
43. Zoological name of common Indian krait is
- a) *Bungaruscaeruleus*
  - b) *Ophiophagus Hannah*
  - c) *Viper russeli*
  - d) *Najanaja*
44. Which of the following animals have a single opening to the outside that serves both as mouth as well as anus?
- a) *Octopus*
  - b) *Asterias*
  - c) *Ascidia*
  - d) *Fasciola*
45. Cellulose digesting zooflagellate found in wood cockroaches is
- a) *Lophomonas*
  - b) *Trichomonas*
  - c) *Trichonympha*
  - d) *Leishmania*
46. Spiracles found in cockroach are
- a) 2 pairs in thorax and 100 pairs in abdomen
  - b) 2 pairs in thorax and 6 pairs in abdomen
  - c) 2 pairs in thorax and 8 pairs in abdomen
  - d) 2 pairs in thorax and 4 pairs in abdomen
47. The phylum-Mollusca lack, which one of the following
- a) Visceral hump
  - b) Malpighian tubules
  - c) Gills
  - d) Radula
48. Down feathers are
- a) First feathery covering in birds
  - b) Modified filoplumes found near nostrils and eyes
  - c) Tail feathers
  - d) Wing feathers
49. The number of abdominal segments in male and female cockroach is
- a) 10, 10
  - b) 9, 10
  - c) 10, 11
  - d) 8, 10
50. Petromyzon and myxine belong to class
- a) Gnathostomata
  - b) Cyclostomata
  - c) Urochordata
  - d) Protochordata
51. All mammals without any exception are characterized by
- a) Viviparity and biconcave red blood cell
  - b) Extra abdominal testis and four-chambered heart









a) *Hirudinaria*, *Nereis* and *Wuchereria*

b) *Earthworms*, *Aphrodite* and *Pila*

c) *Pheretima*, *Tubifex* and *Nereis*

d) *Aplysia*, *Nereis* and *Dentalium*

71. Which of the following is not a larval form of Mollusca?

a) Pluteus

b) Trochophore

c) Veliger

d) Glochidium

72. In *Leucosolenia*, gametes develop from

a) Amoebocytes

b) Archaeocytes

c) Choanocytes

d) Myocytes

73. The main nitrogenous waste of *Hydra*, is

a) Ammonia only

b) Urea only

c) Uric acid only

d) Both (a) and (c)

74. Nematoblasts are formed by

a) Interstitial cells

b) Glands cells

c) Mesoepithelial cells

d) Nerve cells

75. Which of the following is an insect?

a) Moth

b) Mites

c) Prawn

d) Scorpion

76. The phylum-Annelida is named so because of

a) More organs are placed towards anterior part of the body

b) The presence of antenna

c) Anteriorly placed neural system

d) The presence of metamerites

77. Ecdysone is produced by

a) Prothoracic gland

b) Corpora cardiaca

c) Corpora allata

d) Abdominal gland

78. The feeding organ in phylum-Mollusca is

a) Ctenidia

b) Undulating membrane

c) Sucker

d) Radula

79. Coelom is important because

a) It allows the internal organs to grow

b) It separates the gut from the body wall muscles

c) It has evolutionary significance

d) All of the above

80. *Ascaris* is characterized by
- a) Absence of true coelom but presence of metamerism
  - b) Presence of neither true coelom nor metamerism
  - c) Presence of true coelom and metamerism
  - d) Presence of true coelom and metamerism (metamerisation)
81. The first phylum to have a complete alimentary canal is
- a) Platyhelminthes                      b) *Ascaris*                      c) Aschelminthes                      d) Annelida
82. Exoskeleton of which phylum consists of a chitinous cuticle?
- a) Annelida                      b) Porifera                      c) Arthropoda                      d) Echinodermata
83. Waggle dance in honeybees tells about
- a) Direction of food source                      b) Distance of food source
  - c) Both (a) and (b)                      d) None of these
84. "Triploblastic, unsegmented, acoelomate exhibiting bilateral symmetry and reproducing both asexually and sexuality, with some parasitic forms".  
The above description is the characteristic of phylum
- a) Annelida                      b) Ctenophore                      c) Cnidaria                      d) Platyhelminthes
85. Which animals have all developed echolocation system like that of bats?
- a) Wild cats                      b) Beavers                      c) Primates                      d) Whales and dolphins
86. The characteristic larva of phylum-Coelenterata is
- a) Planula                      b) Cysticercus                      c) Rhabditiform                      d) Wiggler
87. What is common between parrot, *Platypus* and kangaroo?
- a) Homeothermy                      b) Toothless jaws
  - c) Functional post-anal tail                      d) Ovoparity
88. The 'bilateral symmetry' refers
- a) When the body can be divided into two unequal halves on passing central axis through it
  - b) To any plane passing through centre, which does not divide the body into equal halves
  - c) When the body can be divided into identical left and right halves only in one plane
  - d) Any plane passing through the central axis of the body dividing the organism into two equal halves

89. In which of the following animals, respiration occurs without any respiratory organ?
- a) Frog                                  b) Fish                                  c) Cockroach                                  d) Earthworm
90. The highly degraded organic matter rich in nitrogen and potassium in particular resulting from the activity of earthworms, is called
- a) Worm castings                                  b) Vermicompost                                  c) Compost bedding                                  d) Humus
91. Which one of the following abnormalities in the host is associated to *Wuchereria*, *Plasmodium* and *Fasciola* respectively?
- I. Parasitic castration  
II. Hyperplasia  
III. Febrile paroxysm  
IV. Peritonitis  
V. Lymphangitis
- a) V, III and II                                  b) V, III and I                                  c) II, IV and V                                  d) II, IV and II
92. Trichocyst and nematocysts are meant for
- a) Defence                                  b) Nutrition                                  c) Respiration                                  d) Excretion
93. Water vascular system is found in
- a) Mollusca                                  b) Arthropoda                                  c) Annelida                                  d) Echinodermata
94. In which of the following, there is syncytial epidermis and longitudinal muscle cells in four bands?
- a) Nematodes                                  b) Platyhelminthes                                  c) Annelids                                  d) Echinoderms
95. Phylum-Chordata is divided into sub-phyla namely
- a) Vertebrata, Protochordata and Urochordata  
b) Urochordata, Gnathochordata and Vertebrata  
c) Urochordata, Tunicata and Vertebrata  
d) Tunicata, Cephalochordata and Vertebrata

**THIS TEST ANSWERS PDF FILES  
AVAILABLE IN MY WEBSITES**

**[www.ravitestpapers.com](http://www.ravitestpapers.com)**

**WHATSAPP – 8056206308**

WEBSITE [www.ravitestpapers.com](http://www.ravitestpapers.com) BLOG [www.ravitestpapers.in](http://www.ravitestpapers.in)

**JOIN MY PAID TEST GROUP WITH PDF ANSWERS**

**WHATSAPP 8056206308**

**2025 - 26 GROUP  
START FROM  
16.3.25 ONWARDS**

upload everyday basis  
practice papers &  
notes for 1 year

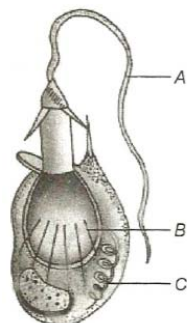
**FEES RS.4000  
FOR 1 YEAR**

for free papers  
check Google  
[ravitestpapers.com](https://ravitestpapers.com)

**NEET  
JEE  
PAID  
GROUP**

**RAVI TEST PAPERS & NOTES**

96. Choose the correct options for the following diagram



- a) A-Cnidcil, B-Refractile rod, C-Stylet  
b) A-Thread tube, B-Contractile fibril, C-Lasso  
c) A-Stylet, B-Refractile rod, C-Capsule  
d) A-Cnidocil, B-Spine, C-Thread tube

97. Platyhelminthes are

- a) Asymmetrical  
b) Radially symmetrical  
c) Bilaterally symmetrical  
d) None of these

98. In Arthropoda, head and thorax are often fused to form cephalothorax, but in which one of the following classes, the body is divided into head, thorax and abdomen?

- a) Insecta  
b) Myriapoda  
c) Crustacea  
d) Arachnida and Crustacea

99. Mouth part of mosquito is

- a) Sucking and piercing type  
b) Sponging type  
c) Biting and chewing type  
d) None of the above

100. Which one of the following mammals is not an odd-toed ungulate?

- a) Rhinoceros  
b) Camel  
c) Zebra  
d) Horse

101. The excretory organs in prawn are

- a) Kidneys  
b) Malpighian tubules  
c) Green glands  
d) Nephridia

102. The dorsal plate of skeleton found on the abdomen of cockroach is called

- a) Pleuron  
b) Sternum  
c) Tergum  
d) Vertex

103. Which of the following does not make a nest of its own?

- a) Crow  
b) Parrot  
c) Cuckoo  
d) Sparrow

104. Which of the following statements are true (T) and which are false (F)? Choose the correct option

- I. Amphibians have metanephric kidneys  
II. The skull of mammals is dicondylic

WEBSITE [www.ravitestpapers.com](http://www.ravitestpapers.com) BLOG [www.ravitestpapers.in](http://www.ravitestpapers.in)

JOIN MY PAID TEST GROUP WITH PDF ANSWERS

III. Aves copulate by cloacal apposition

IV. Voice is produced in Aves by a syrinx

V. *Lepus* is gregarious in nature

a) II, IV and V are true, I and III are false

b) II, III and IV are true, I and V are false

c) II and V are true, I, III and IV are false

d) I, II and V are true, III and IV are false

105. During its life cycle, *Fasciola hepatica* (liver fluke) infects its intermediate host and primary host at the following larval stages, respectively

a) Metacercaria and cercaria

b) Miracidium and metacercaria

c) Redia and miracidium

d) Cercaria and redia

106. From the following fishes, identify the one with agglomerular kidney.

a) *Sphyrna*

b) *Tilapia*

c) *Cirrhinus*

d) *Exocoetus*

107. The scientific name of Asian tiger mosquito is

a) *Aedes aegypti*

b) *Aedes albopictus*

c) *Aedes taeniorhynchus*

d) *Aedes albolineatus*

108. The response to external stimulus is quicker and more precise in which of the following symmetry?

a) Radial

b) Bilateral

c) Spherical

d) Biradial

109. Unique features of phylum-Ctenophora is

a) Presence of comb plates and comb jellies

b) Presence of comb plates only

c) Presence of tentacles only

d) Alteration of generation only

110. Three types of body cavity are

a) True coelom, pseudocoelom and haemocoel

b) Pseudocoelom, protocoelom and acoelom

c) Acoelom, deuterocoel and homocoel

d) Protocoel, deuterocoel and pseudocoelom

111. Which of the following is a crustacean?

a) Prawn

b) Snail

c) Sea anemone

d) *Hydra*

112. In earthworm, self-fertilization cannot occur due to

a) Protogyny

b) Protandry

c) Epigyny

d) Hypogyny

113. Which one of the following pairs is mismatched?

a) *Pilaglobosa* – Pearl

b) *Apis indica* – Honey



c) *Kenialacca* – Lac

d) *Bombyxmori* – Silk

114. Types of salivary glands present in rabbit are

a) One

b) Two

c) Three

d) Four

115. Lateral line sense organs occur in

a) Salamander

b) Frog

c) Water snake

d) *Scoliodon*

116. Dental formula of rabbit is

a)  $\frac{2033}{1023}$

b)  $\frac{2133}{1023}$

c)  $\frac{2023}{1023}$

d)  $\frac{1303}{1203}$

117. Amphids are cuticular elevations on ventrolateral lips of *Ascaris*. These are

a) Tangoreceptors

b) Tactoreceptors

c) Olfactoreceptors

d) Chemoreceptors

118. Poison gland in snake is located in

a) Parietal

b) Maxilla

c) Mandible

d) Neck

119. Bioluminescence is seen in phylum

a) Ctenoplana

b) Coelenterata

c) Ctenophora

d) Cnidaria

120. Which one is the real product of honey bee?

a) Bee wax

b) Honey

c) Propolis

d) Pollen

121. Which one of the following is a matching set of phylum and its three examples?

a) Cnidaria – *Bonellia*, *Physalia*, *Aurelia*

b) Platyhelminthes – *Planaria*, *Schistosoma*, *Enterobius*

c) Mollusca – *Loligo*, *Teredo*, *Octopus*

d) Porifera – *Spongilla*, *Euplectella*, *Pennatula*

122. Rhabditiform is the larva of

a) *Hydra*

b) Platyhelminthes

c) *Ascaris*

d) Earthworm

123. Which of the following statements are true/false?

I. Poikilothermic animals are also called ectothermic animals

II. Sharks are ovoviviparous animals

III. Coxal glands are excretory organs present in arachnids

IV. Copper containing respiratory pigment is called haemocyanin, it is present in *Pila*

a) All the statements are false

b) All the statements are true

c) I and II are true and III and IV are false

d) I and III are true and II and IV are false

WEBSITE [www.ravitestpapers.com](http://www.ravitestpapers.com) BLOG [www.ravitestpapers.in](http://www.ravitestpapers.in)

JOIN MY PAID TEST GROUP WITH PDF ANSWERS

124. Which of the following statements are true/false?

- I. In torpedo, the electric organs are capable of generating strong electric shock to paralyze the prey
- II. Bony fishes use pectoral, pelvic, dorsal, anal and caudal fins in swimming
- III. Amphibian skin is moist and has thick scales
- IV. Birds are poikilothermous animals
- V. The most unique mammalian characteristic is the presence of milk producing mammary glands by which the young ones are nourished

- a) I, II and III are true; IV, V are false
- b) I, II and V are true; III and IV are false
- c) I, II and III are false; IV and V are true
- d) I, II and IV are false; III, and V are true

125. Nematoblasts of *Hydra* are

- a) Sensory
- b) Complicated
- c) With nematocyst apparatus
- d) All of the above

126. *Ascaris* has

- a) Paired testes and single ovary
- b) Paired ovaries and single testis
- c) Single ovaries and single testis
- d) Paired ovaries and paired testes

127. Ampullae of Lorenzini are present in

- a) Fish
- b) Lizard
- c) Frog
- d) Rabbit

128. Which of the following is colourless *Hydra*?

- a) *Hydra fusca*
- b) *Hydra viridis*
- c) *Hydra oligactis*
- d) *Hydra vulgaris*

129. In which of the following organisms testes descend into scrotum in breeding season but in non-breeding season goes up?

- a) Frog
- b) Kangaroo
- c) Shrew
- d) Bat

130. Correct sequence in embryonic development of frog is

- a) Zygote – Cleavage – Blastula – Gastrula
- b) Zygote – Cleavage – Gastrula – Blastula
- c) Cleavage – Zygote – Blastula – Gastrula
- d) Zygote – Blastula – Cleavage – Gastrula

131. Larva of *Sycon* is

- a) Parenchymula
- b) Amphiblastula
- c) Redia
- d) Trochophore

132. Sea horse is

- a) A bird
- b) A mammal
- c) An amphibian
- d) A fish

133. Feeding type of animals belonging to phylum-Porifera is

- a) Raptorial feeders
- b) Suctorial feeders
- c) Filter feeders
- d) None of these

WEBSITE [www.ravitestpapers.com](http://www.ravitestpapers.com) BLOG [www.ravitestpapers.in](http://www.ravitestpapers.in)

JOIN MY PAID TEST GROUP WITH PDF ANSWERS

134. Which worm may go very deep in soil up to 60-90 cm and form vertical and complicated burrows for their movement?  
a) Epigenic                      b) Endogenic                      c) Anecic                      d) Geophagic
135. Which of the following animal is called a living fossil?  
a) King locust                      b) *Limulus*                      c) *Bombyx*                      d) *Balanoglossus*
136. Which of the following group will be amniotes?  
a) *Hermidactylus* – *Salamander* – *Manis*                      b) *Ornithorhynchus* – *Struthio* – *Necturus*  
c) *Anguis* – *Eudynamis* – *Pteropuss*                      d) None of the above
137. The character that differentiates chordate from non-chordate is  
a) Triploblastic body organization                      b) Heterotrophic mode of nutrition  
c) Dorsal tubular nerve cord                      d) Sexual reproduction
138. Cavity of coelenterates is called  
a) Coelenterons                      b) Coelom                      c) Cavity                      d) None of these
139. Which one of the following pairs of animal comprises 'jawless fishes'?  
a) Lampreys and eels                      b) Mackerals and rohu  
c) Lampreys and hag fishes                      d) Guppies and hag fishes
140. Consider the following four statements (I-IV) about certain desert animals such as kangaroo rat.  
I.They have dark colour and high rate of reproduction and excrete solid urine.  
II.They do not drink water, breathe at a slow rate to conserve water and have their body covered with thick hairs.  
III.They feed on dry seeds and do not require drinking water.  
IV.They excrete very concentrated urine and do not use water to regulate body temperature.  
Which two of the above statements for such animals are true?  
a) III and IV                      b) II and III                      c) III and I                      d) I and II
141. Which of the following nephridia does not found in earthworm?  
a) Septalnephridia                      b) Macronephridia  
c) Integumentarynephridia                      d) Pharyngeal nephridia
142. Some of the statements are given below  
I. Porifera to Echinodermata lack a notochord  
II. Platyhelminthes display tissue level organisation  
III. Mesoglea is present in coelenterates during development  
IV. Aschelminthes are coelomates  
Choose the correct options

- a) I, II, III and IV are True    b) I and II are True    c) I and III are True    d) II and III are True

143. Butterfly belongs to

- a) Homoptera    b) Procoptera    c) Hemiptera    d) Lepidoptera

144. Which of the following shows polymorphism?

- a) *Physalia*    b) *Trypanosoma*    c) Termite    d) All of these

145. Which one of the following animal has both exoskeletal and endoskeletal structures?

- a) Freshwater mussel    b) Tortoise    c) Frog    d) Jelly fish

146. Which of the following are also known as collar cells?

- a) Choanocytes    b) Pinocytes    c) Thesocytes    d) Cnidoblast

147. Which of the following does not belong to phylum-Platyhelminthes?

- a) *Fasciola*    b) *Taenia*    c) *Wuchereria*    d) *Planaria*

148. True segmentation is also called

- a) Metagenesis  
b) Metamorphosis  
c) Metamerism  
d) Metasegmerism

**THIS TEST ANSWERS PDF FILES  
AVAILABLE IN MY WEBSITES  
[www.ravitestpapers.com](http://www.ravitestpapers.com)**

**WHATSAPP – 8056206308**

149. Two common characters found in centipede, cockroach and crab are

- a) Compound eyes and anal cerci    b) Jointed legs and chitinous exoskeleton  
c) Green gland and tracheae    d) Book lungs and antennae

150. A four chambered heart is not found in

- a) Mammals    b) Birds    c) Snake    d) Crocodile

151. The function of typhlosole in earthworm

WEBSITE [www.ravitestpapers.com](http://www.ravitestpapers.com) BLOG [www.ravitestpapers.in](http://www.ravitestpapers.in)

**JOIN MY PAID TEST GROUP WITH PDF ANSWERS**

- a) Is to secrete digestive juice
- b) Is to slowdown rate of passage of food
- c) Increase absorptive area of intestinal epithelium
- d) Have no function

152. Which is the smallest known bird?

- a) Artic Tern
- b) Hoopoe
- c) *Streptopelia*
- d) Bee humming bird

153. Bidder's canal is found in

- a) Testis of frog
- b) Kidney of frog
- c) Kidney of mammal
- d) Ovary of mammal

154. Which sound producing organ is found in bird?

- a) Pharynx
- b) Larynx
- c) Syrinx
- d) Trachea

155. Nidology is the study of

- a) Cnidarians
- b) Aschelminthes
- c) Bird nests
- d) Mammals

156. The number of segments on the anal cerci of cockroach is

- a) 12
- b) 15
- c) 18
- d) 16

157. The organs that assists in sound production in mosquito, is

- a) Hairy appendages
- b) Mouth parts
- c) Hemielytra
- d) Halteres

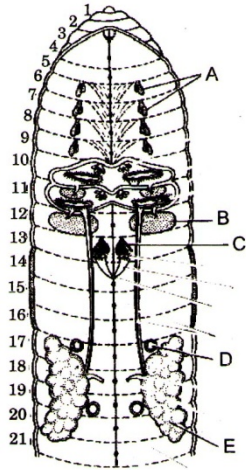
158. Mollusca is

- a) Triploblastic, Acoelomate
- b) Triploblastic, coelomate
- c) Diploblastic, Acoelomate
- d) Diploblastic, coelomate

159. Tube feet is the locomotory organ in

- a) Star fish
- b) Jelly fish
- c) Silver fish
- d) Scoliodon

160. In the diagram of the reproductive system of earthworm A, B, C, D and E represents.



- a) A-Seminal vesicle, B-Spermathecae, C-Prostate gland, D-Ovary, E-Accessory gland
- b) A- Seminal vesicle, B- Ovary, C- Accessory gland D- Spermathecae, E- Prostate gland,
- c) A- Spermathecae, B- Seminal vesicle, C- Accessory gland D- Ovary, E- Prostate gland,
- d) A- Spermathecae, B- Seminal vesicle, C- Ovary, D- Accessory gland E- Prostate gland,

**THIS TEST ANSWERS PDF FILES  
AVAILABLE IN MY WEBSITES**

**[www.ravitestpapers.com](http://www.ravitestpapers.com)**

**WHATSAPP – 8056206308**

WEBSITE [www.ravitestpapers.com](http://www.ravitestpapers.com) BLOG [www.ravitestpapers.in](http://www.ravitestpapers.in)

**JOIN MY PAID TEST GROUP WITH PDF ANSWERS**

**ANSWERS**

1) d	2) a	3) d	4) a	41) d	42) b	43) a	44) d
5) d	6) c	7) a	8) d	45) a	46) c	47) b	48) a
9) b	10) b	11) a	12) a	49) a	50) b	51) c	52) d
13) c	14) d	15) d	16) d	53) c	54) d	55) b	56) d
17) a	18) c	19) c	20) c	57) a	58) b	59) d	60) d
21) a	22) c	23) b	24) c	61) d	62) c	63) c	64) c
25) c	26) d	27) c	28) a	65) b	66) c	67) c	68) d
29) b	30) c	31) c	32) b	69) a	70) c	71) a	72) b
33) b	34) d	35) b	36) b	73) a	74) a	75) a	76) d
37) d	38) b	39) d	40) b	77) a	78) d	79) d	80) b
81) c	82) c	83) c	84) d	121) c	122) c	123) b	124) b
85) b	86) a	87) a	88) c	125) a	126) b	127) a	128) d
89) d	90) b	91) a	92) a	129) d	130) a	131) b	132) d
93) d	94) a	95) d	96) b	133) c	134) c	135) b	136) c
97) c	98) a	99) a	100) b	137) c	138) a	139) c	140) a
101) c	102) c	103) c	104) b	141) b	142) c	143) d	144) a
105) b	106) d	107) b	108) b	145) b	146) a	147) c	148) c
109) b	110) a	111) a	112) b	149) b	150) c	151) c	152) d
113) a	114) d	115) d	116) a	153) b	154) c	155) c	156) b
117) d	118) b	119) c	120) a	157) d	158) b	159) a	160) d