

# SEARCH GOOGLE FOR FREE MATERIALS

**FOR ANSWERS**

**[www.ravitestpapers.in](http://www.ravitestpapers.in)**

**FOR PDF FILES**

**[www.ravitestpapers.com](http://www.ravitestpapers.com)**

## Instructions

1. JOIN MY PAID WHATSAPP GROUP & GET PDF FORMAT PAPERS WITH ANSWERS FOR ALL MY UNLIMITED DPP UPDATES. ONE TIME FEE RS.3000/ OR PER MONTH RS.500 TILL 2026 EXAM RAVI TEST PAPERS & NOTES WHATSAPP – 8056206308

- Q1.** 1. Differentiate between malignant and benign tumours. **3 Marks**  
2. Name and explain the most feared property of a malignant tumour.

- Q2.** Why is breast-feeding recommended during the initial period of an infant's growth? Give reasons. **3 Marks**

- Q3.** A woman has certain queries as listed below, before starting with contraceptives pills. Answer them. **3 Marks**  
1. What do contraceptive pills contain and how do they act as contraceptives?  
2. What schedule should be followed for taking these pills?

- Q4.** Identify 'a', 'b', 'c', 'd', 'e' and 'f' in the table given below: **3 Marks**

No.	Syndrome	Cause	Characteristics of affected individual	Sex Male/Female/Both
1	Down's	Trisomy of 21	'a' (i) (ii)	'b'
2	'c'	XXY	Overall masculine development	'd'
3	Turner's	45 with OX	'e' (i) (ii)	'f'

- Q5.** Name the type of human cell HIV attacks on its entry into the body. Explain the events that occur in the cell which further lead to cause immunodeficiency syndrome. **3 Marks**

- Q6.** Human blood group is a good example of multiple allelism and co-dominance. Justify. **3 Marks**

- Q7.** A number of passengers were severely burnt beyond recognition during a train accident. Name and describe a modern technique that can help hand over the dead to their relatives. **3 Marks**

- Q8.** Double fertilisation is reported in plants of both, castor and groundnut. However, the mature seeds of groundnut are non-albuminous and castor are albuminous. Explain the post-fertilisation events that are responsible for it. **3 Marks**

- Q9.** Explain the process of pollination in Vallisneria. How is it different in water-lily, which is also an aquatic plant? **3 Marks**

- Q10.** Explain any three advantages the seeds offer to angiosperms. **3 Marks**

- Q11.** Following the collision of two trains a large number of passengers are killed. A majority of them are beyond recognition. Authorities want to hand over the dead to their relatives. Name a modern scientific method and write the procedure that would help in the identification of kinship. **3 Marks**

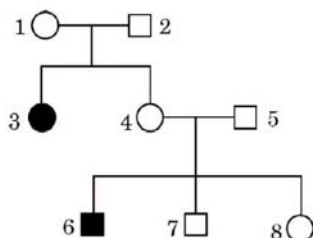
- Q12.** A teacher wants his/her students to find the genotype of pea plants bearing purple coloured flowers in their school garden. Name and explain the cross that will make it possible. **3 Marks**

- Q13.** During a monohybrid cross involving a tall pea plant with a dwarf pea plant, the offspring populations were tall and dwarf in equal ratio. Work out a cross to show how it is possible. **3 Marks**

- Q14.** 1. Explain the phenomena of multiple alleles and co-dominance taking ABO blood group as an example. **3 Marks**  
2. What is the phenotype of the following:

1. I<sup>A</sup> i
2. i i

- Q15.** What does the following equation represent? Explain. **3 Marks**  
 $p^2 + 2pq + q^2 = 1$
- Q16.** Explain the phenomena of dominance, multiple allelism and co-dominance taking human ABO blood group as an example. **3 Marks**
- Q17.** Both Haemophilia and Thalassemia are blood related disorders in humans. Write their causes and the difference between the two. Name the category of genetic disorder they both come under. **3 Marks**
- Q18.** Following the collision of two trains, a large number of passengers are killed. A majority of them are beyond recognition. Authorities want to hand over the dead to their relatives. Name a modern scientific method and write the procedure that would help in the identification of kinship. **3 Marks**
- Q19.** Over the last century, vaccination has been the most effective medical strategy to control infectious diseases. Explain the principle on which 'vaccinations' act. **3 Marks**
- Q20.** **3 Marks**  
 1. Write the characteristic features of anther, pollen and stigma of wind pollinated flowers.  
 2. How do flowers reward their insect pollinators? Explain.
- Q21.** Community Service department of your school plans a visit to a slum area near the school with an objective to educate the slum dwellers with respect to health and hygiene. **3 Marks**  
 1. Why is there a need to organize such visits?  
 2. Write the steps you will highlight, as a member of this department, in your interaction with them to enable them to lead a healthy life.
- Q22.** Different types of antibodies are produced in our body by the B-lymphocytes in response to a pathogen that enters in our blood. Name any two antibodies produced and draw a schematic representation of an antibody molecule and label its four parts. **3 Marks**
- Q23.** Two children, A and B aged 4 and 5 years respectively visited a hospital with a similar genetic disorder. The girl A was provided enzyme-replacement therapy and was advised to revisit periodically for further treatment. The girl, B was, however, given a therapy that did not require revisit for further treatment. **3 Marks**  
 1. Name the ailments the two girls were suffering from?  
 2. Why did the treatment provided to girl A required repeated visits?  
 3. How was the girl B cured permanently?
- Q24.** Explain the mechanism of 'sex determination' in birds. How does it differ from that of human beings? **3 Marks**
- Q25.** Study the pedigree chart of a family given below and answer the questions that follow: **3 Marks**



1. Is the disease in this pedigree chart a recessive or dominant disorder? Give reason.
2. Identify the female individual in this family, who for sure is homozygous.
3. Genotype of which one individual cannot be identified in this pedigree chart?
4. Identify a male who is definitely heterozygous.
5. Is this disease a sex-linked or an autosomal disorder?

### WHATSAPP TEST GROUP FEES

**CBSE 10/12 - FEES RS.2000**

**NEET/JEE - FEES RS.3000**

MONTHLY 10 PAPERS YOUR CHOICE.  
OVERALL MONTHLY 20 TO 30 PAPERS UPLOAD IN GROUP

ONE TIME FEES  
FROM AUGUST TO TILL FINAL FINAL EXAM

WHATSAPP NOW

8056206308  
ravitestpapers.com

**JOIN MY PAID GROUP, IF YOU WANT ALL MY DPP WITH PDF ANSWERS TILL FINAL EXAM**

PAY RS.500 TO GET MAY JUNE JULY UPLOADED PAPERS