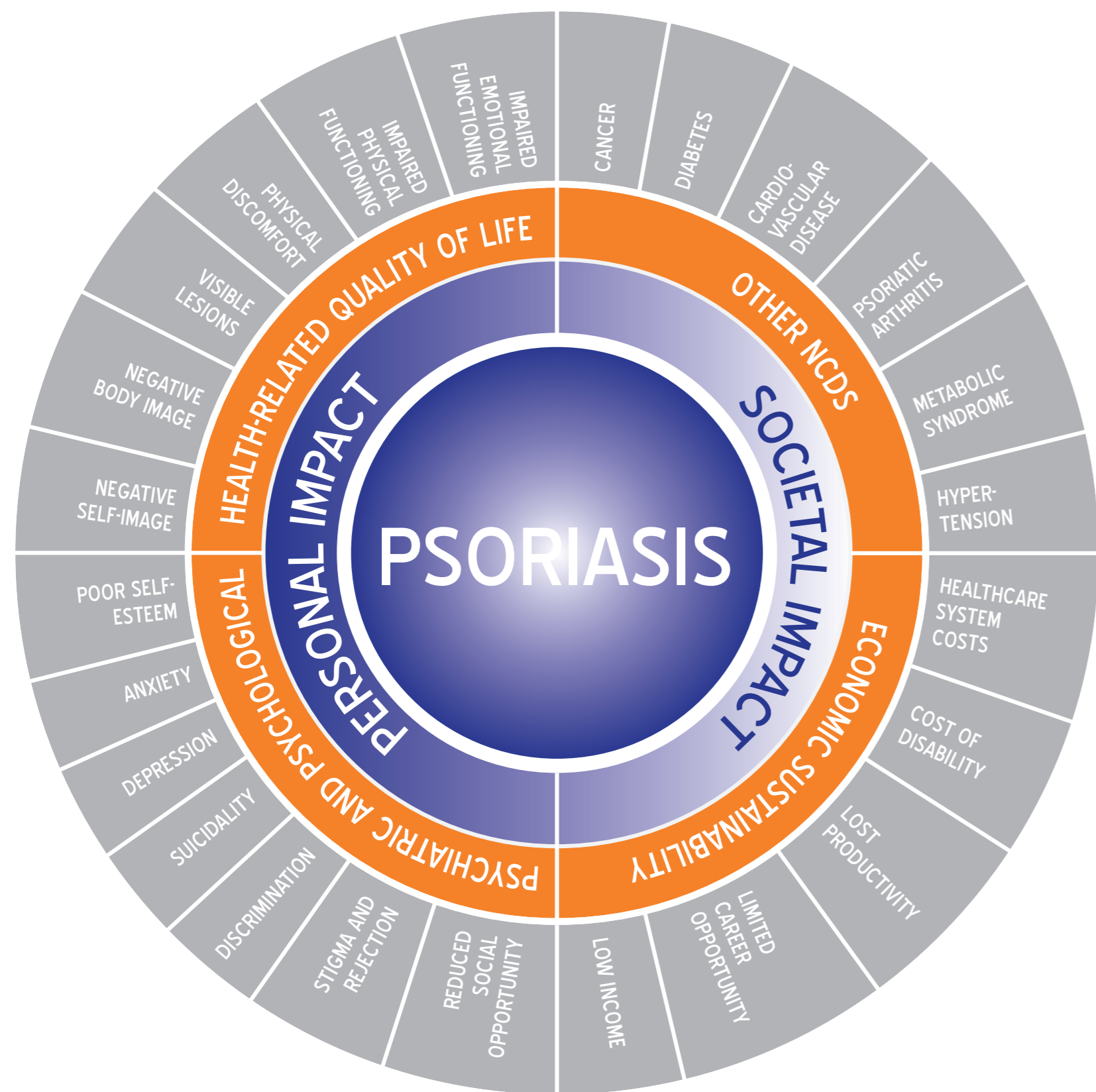
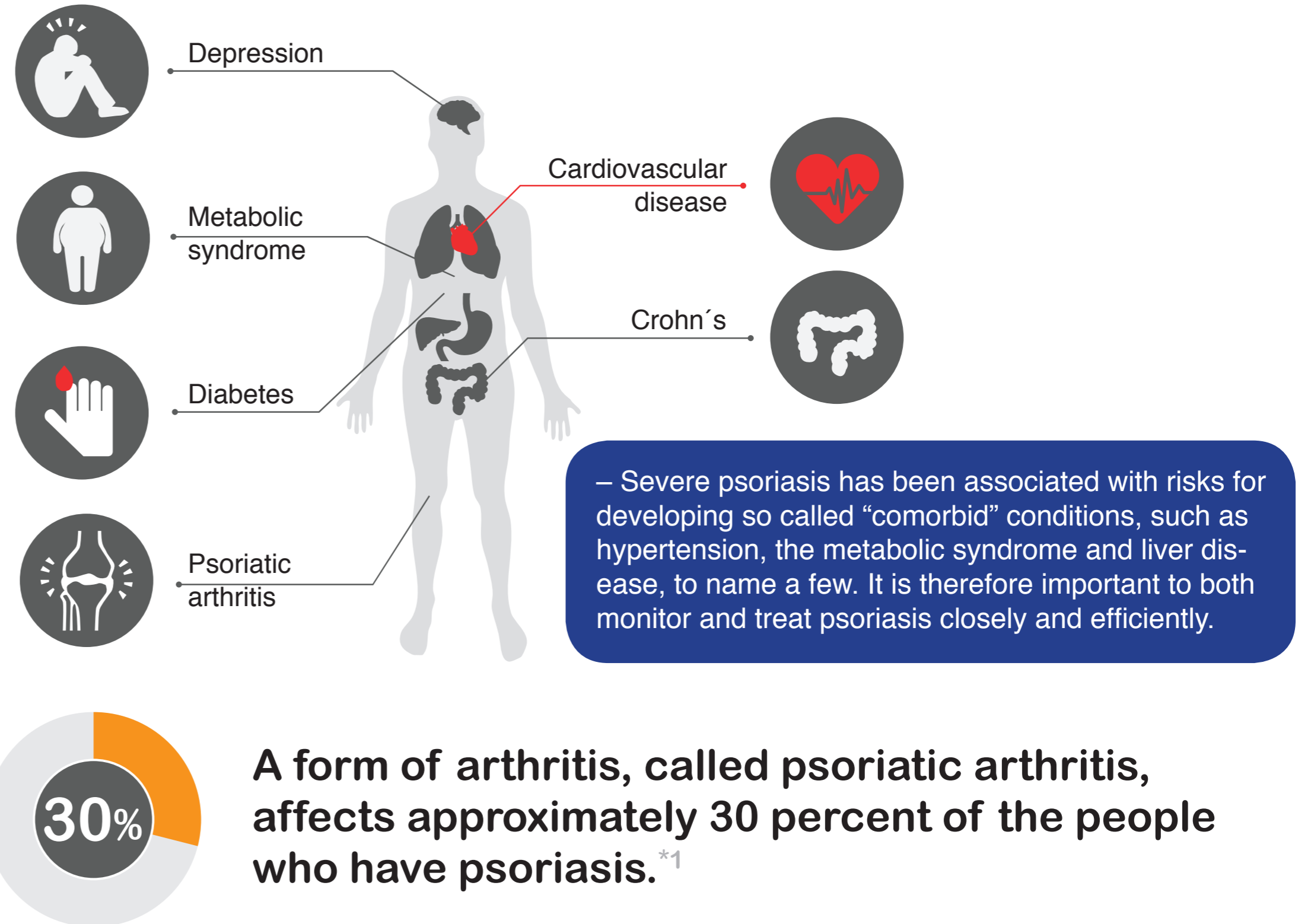


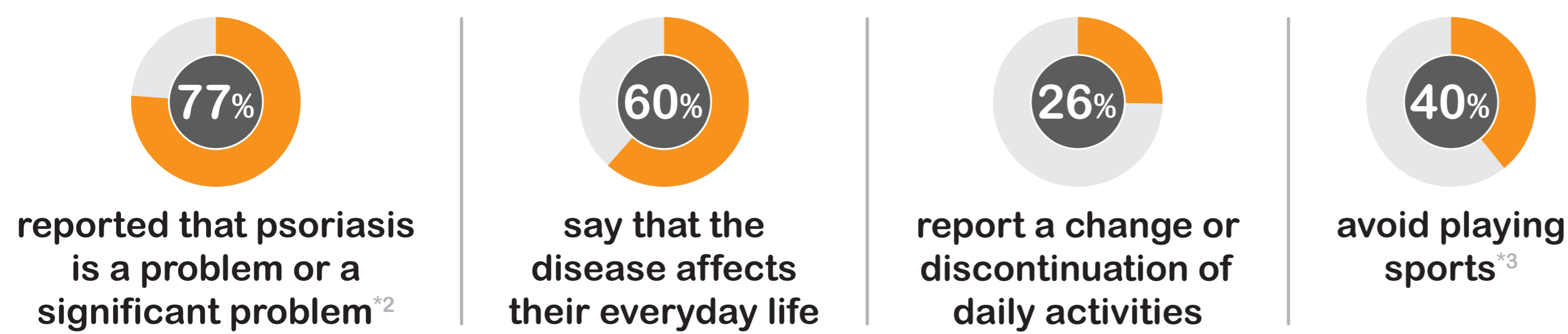
# Psoriasis affects more than 125 000 000 of the world's population



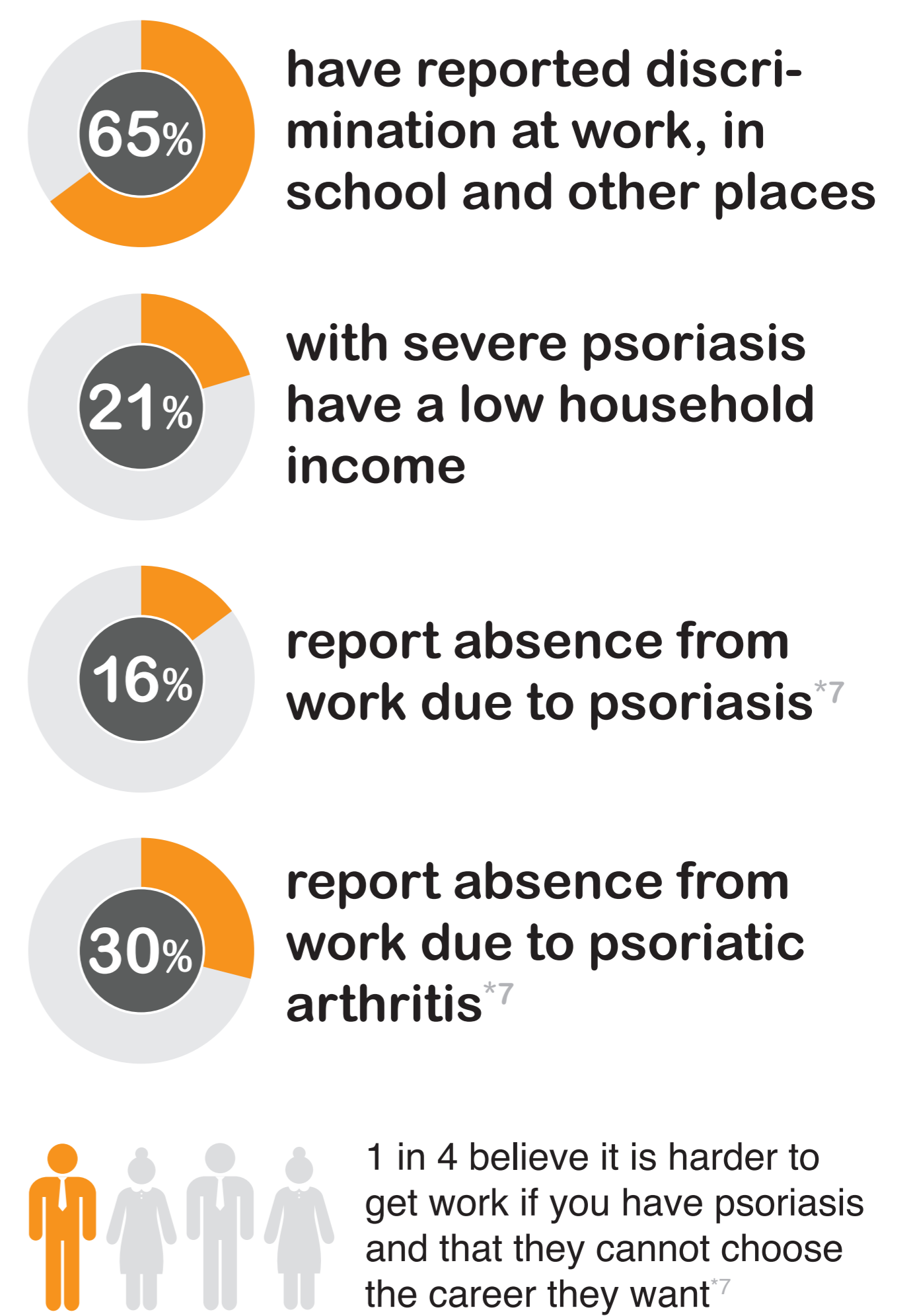
## Psoriasis affects the whole person



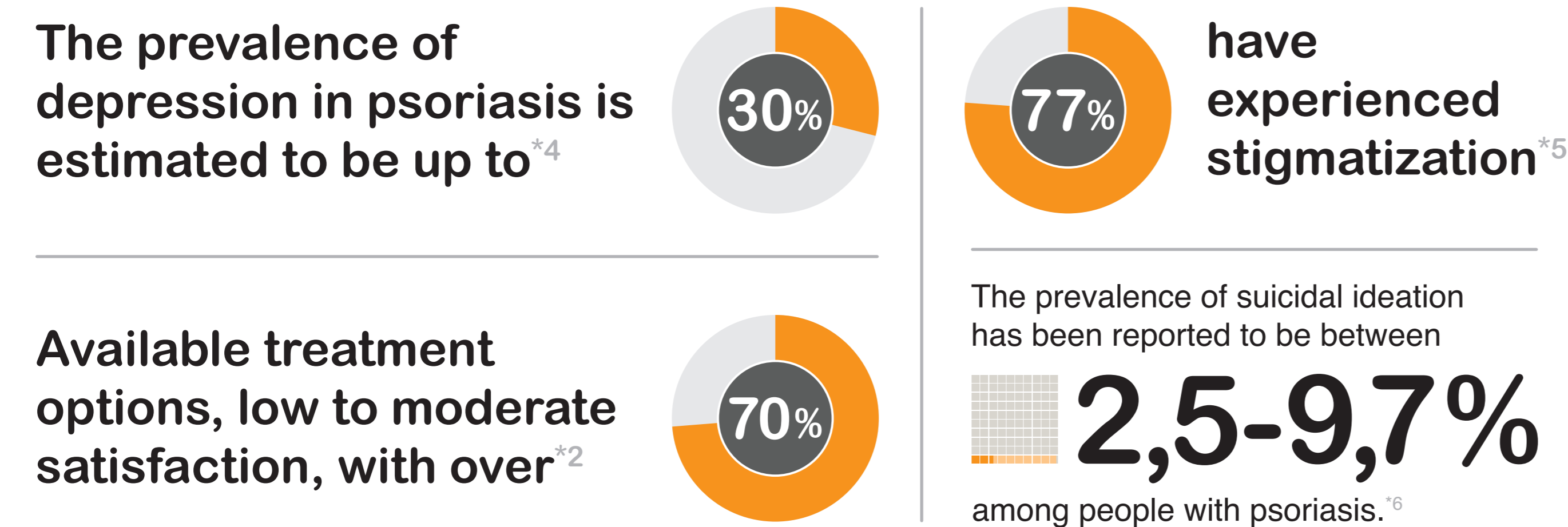
## The daily impact of psoriasis



## Socioeconomic effects of psoriasis



## The psychosocial burden of psoriasis



REFERENCES  
 \*1 Psoriasis beyond the skin: an expert group consensus on the management of psoriatic arthritis and common co-morbidities in patients with moderate-to-severe psoriasis. R. Strohal, B. Kirby, L. Puig3 on behalf of the Psoriasis Expert Panel (G. Girolomoni, K. Kragballe, T. Luger, F.O. Nestle, J.C. Prinz, M. Stahle, N. Yawalkar  
 \*2 L. Dubertret, L.; U. Mrowietz; A. Ranki; P.C.M. van de Kerkhof; S. Chimenti; T. Lotti; G. Schäfer “European Patient Perspectives on the Impact of Psoriasis: the EUROPSO Patient Membership Survey”. The British Journal of Dermatology, Vol. 155 Issue 4, Pages 729-736, http://www3.interscience.wiley.com/journal/118568777/abstract. August. 4, 2008  
 \*3 “Image Matters.” Psoriasis. Media Planet, October 2007, pg. 5.  
 \*4 Weiss SC, Kimball AB, Liewehr DJ, et al. Quantifying the harmful effect of psoriasis on health-related quality of life. J Am Acad Dermatol. 2002;47:512-8  
 \*5 IFPA member survey 2011  
 \*6 Basavaraj KH, Navya MA, Rashmi R. Stress and quality of life in psoriasis: an update. International Journal of Dermatology (2011) 50, 783-792.  
 Gupta MA, Gupta AK. Depression and suicidal ideation in dermatology patients with acne, alopecia areata, atopic dermatitis and psoriasis. Br J Dermatol 1998; 139: 846-850.  
 \*7 Swedish Psoriasis Association member survey 2006



<http://www.ifpa-pso.org>



INTERNATIONAL FEDERATION OF PSORIASIS ASSOCIATIONS