



# Chatterton Oaks

11053 Chatterton Dr. Houston, TX 77043  
Price range: Low \$500's to High \$600's



- Urban Farmhouse Community
- Gated Access
- Two and Three Story Homes with Private Yard Space
- Three and Four Bedroom Floor Plans
- Outdoor-Living Designs with Step-Up Front Porches, Balconies, and Roof Top Terraces
- Minutes from Shopping, Fine Dining, & Entertainment at CITYCENTRE and Memorial City Mall
- Easy Access to I-10 and Beltway 8; Two Miles from the Energy Corridor
- Zoned to Stratford High School

## For More Information

**Clint Vernon**

*Sales Consultant*

 713-997-0204

 [clintv@intownhomes.com](mailto:clintv@intownhomes.com)

 [facebook.com/intownhomes](https://facebook.com/intownhomes)

 [instagram.com/intownliving](https://instagram.com/intownliving)



## Custom Features

### Elegant Exteriors

---

- **Urban Farmhouse Architecture**
- Slate style composition roof or standing seam roof (per plan / home site)
- Eight-foot doors
- **Nichiha** fiber cement siding and stucco board
- 2-car garage with ample storage space
- Professionally designed landscape package
- Energy efficient, double pane windows with Low-E insulated glass
- Elegant exterior coach lighting

### Inspiring Interiors

---

- Wide plank wood flooring
- Wrought iron spindles
- Double ceiling moulding in main living area
- Five-inch base moulding throughout home
- Eight-foot raised panel interior doors
- Optional private residential elevator (per plan)
- Elegant stairways with hardwood tread to third floor
- Rounded sheetrock corners
- 12' ceilings

### Luxurious Master Suites

---

- **Hansgrohe** overhead shower head + handheld head
- Six-foot garden tub (per plan)
- Oversized glass enclosed shower
- Dual vanities (per plan)
- Soft closing cabinets and elevators

### Gourmet Kitchens

---

- Spacious gourmet kitchens
- Granite or quartz countertops
- **Shiloh** or **Aspect** cabinets - soft closing and hardware
- 4 piece **Fisher & Paykel** or **Bosch** appliance package
- **Fisher & Paykel** or **Bosch** single over
- **Fisher & Paykel** or **Bosch** microwave
- **Fisher & Paykel** or **Bosch** fully integrated dishwasher
- Undermount sinks with garbage disposal
- Natural stone backsplash
- **Insinkerator** 1/3 horsepower disposal
- Recessed can lights with LED bulbs
- Under cabinet lighting

### Quality Construction

---

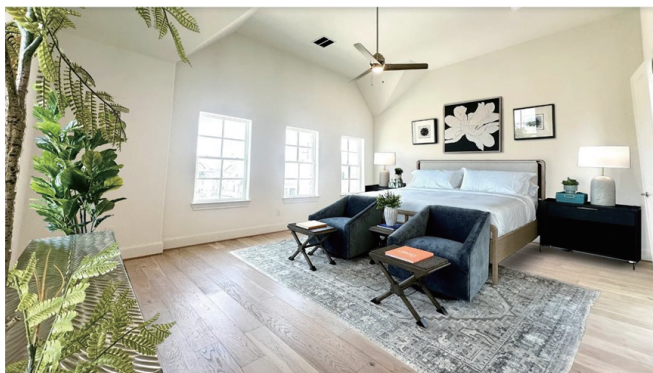
- Engineered, certified and inspected foundations
- **Five-point** extensive inspection process: structural, frame, exterior, air infiltration and quality assurance
- Engineered flooring system
- Fully installed alarm system with home automation
- RG6 digital coax cable for cable and internet
- CAT5 wiring for phone and home internet
- Pre-wire for surround sound in family room

Continuing a policy of constant improvement, builder reserves the right to make modifications including changes, additions or deletions in the features, plans and specifications, and to substitute material of similar quality without notice or prior obligation. \*Features may be available only in specific plans and/or in specific communities. The availability of these features is subject to change without notice. Features on homes constructed prior to this printing may have different features. No representation or warranties either expressed or implied are made as to the accuracy of the information herein or with respect to the suitability, usability, feasibility, merchantability or conditions of any property herein described. Rev. 08-26-10 All Rights Reserved. ©InTown Homes 2017





# INTOWN — HOMES —



## Eco-Hip™ for Sustainable Green Living

- InTown Homes Eco-Hip™ program meets and exceeds the New International Energy Code Standard
- 2 x 6 exterior walls increase structural rigidity
- Strategically used engineered wood
- **R-19 Insulation** in exterior walls
- **R-30 Insulation** in attic
- Air sealing package
- **Navien** tankless water heaters
- **CertainTeed Air Renew Drywall** provides mold and moisture resistance in the home while removing VOCs (Volatile Organic Compounds)
- **Georgia Pacific ToughRock Mold-Guard Drywall** provides mold and moisture resistance in the home
- **Rainscreen** weather barrier system
- **Trane** 16.00 SEER HVAC system with two-stage compressor (per plan)
- Independent zoning of each floor level for controlled comfort and efficiency
- MERV 10 - high performance media air filter
- Programmable thermostats
- Radiant barrier
- Low-E double pane energy efficient vinyl windows (per community)
- **Energy Star®** appliances
- Duct blaster and blower door testing
- Low VOC paint
- **Hansgrohe** plumbing package

## Building Partners



Continuing a policy of constant improvement, builder reserves the right to make modifications including changes, additions or deletions in the features, plans and specifications, and to substitute material of similar quality without notice or prior obligation. \*Features may be available only in specific plans and/or in specific communities. The availability of these features is subject to change without notice. Features on homes constructed prior to this printing may have different features. No representation or warranties either expressed or implied are made as to the accuracy of the information herein or with respect to the suitability, usability, feasibility, merchantability or conditions of any property herein described. Rev. 08-26-10 All Rights Reserved. ©InTown Homes 2017

