



IRIS CONDOS AT MUELLER

The beautiful IRIS at Mueller—your entry point to a variety of outstanding new homes carefully constructed by InTown Homes. Located in the heart of Austin, TX, this much-anticipated community includes a diverse mix of Condo homes designed to elevate your everyday living. Here in IRIS at Mueller, modern living, contemporary style, and convenience are woven into all aspects of this growing community. Whether you're seeking a comfortable one-story home or a spacious two-story sanctuary with ample space for hosting, there's a home just for you at IRIS at Mueller. Stepping into a home at IRIS at Mueller is like embarking on a journey tailored just for you—it's more than just a house; it's an immersive living experience. Located in the Austin Independent School District school district, you have access to excellent educational opportunities for your young ones as well. This is your chance to embrace an enviable community lifestyle with quality homes, top-notch amenities, and the ultimate convenience.



UNIT 201

1 BED
1 BATH
839 SF



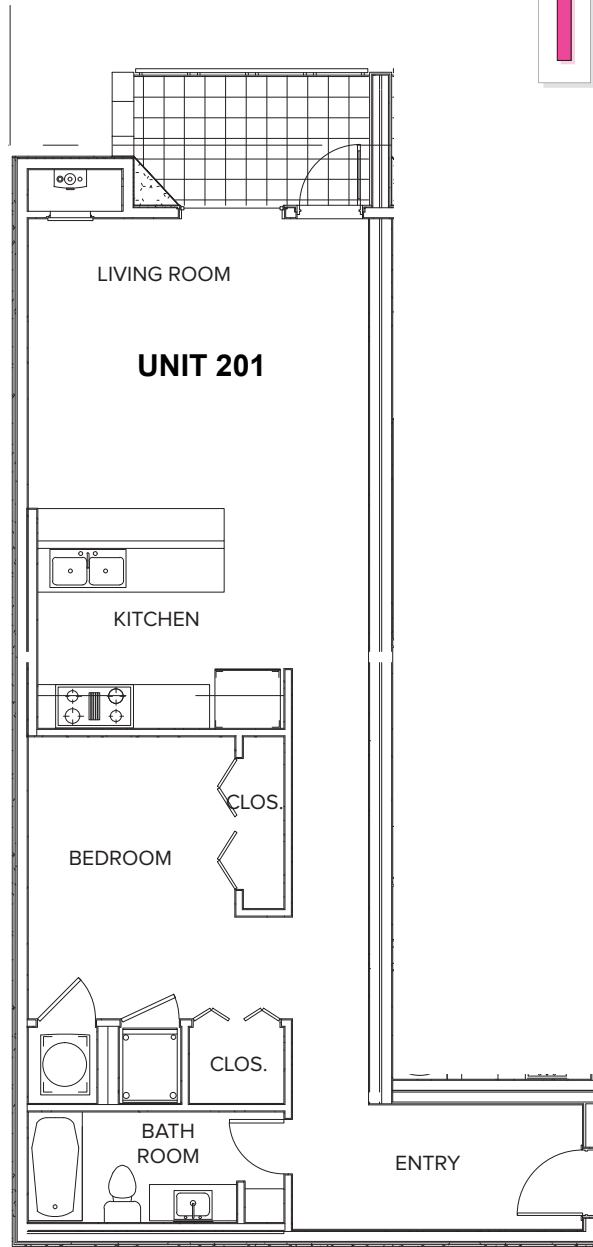
2



3

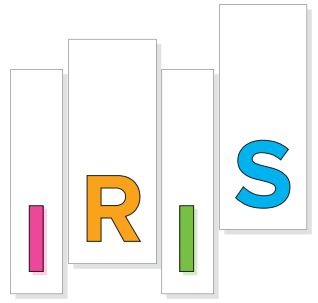


4

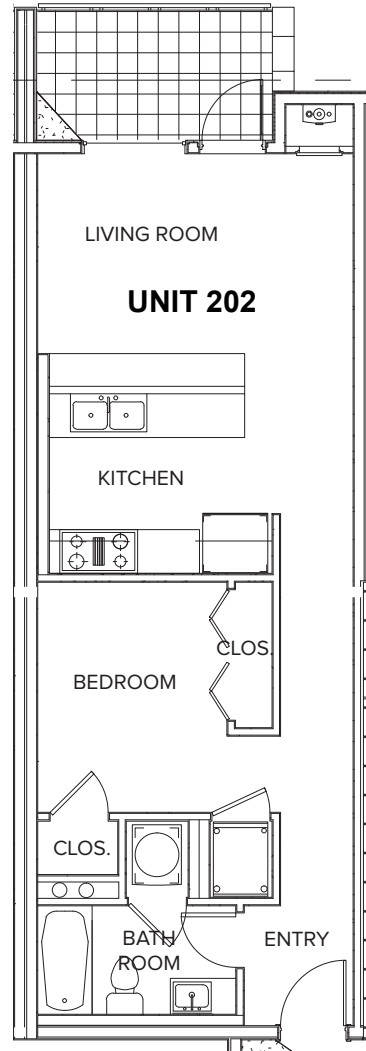
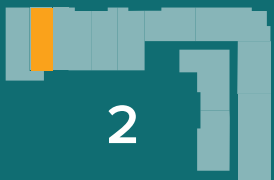


| | | |
|-------------|-------|-----------|
| BEDROOM | | 10'X13' |
| LIVING ROOM | | 13'X17' |
| BALCONY | | 76 SQ.FT. |

UNIT 202



1 BED
1 BATH
655 SF

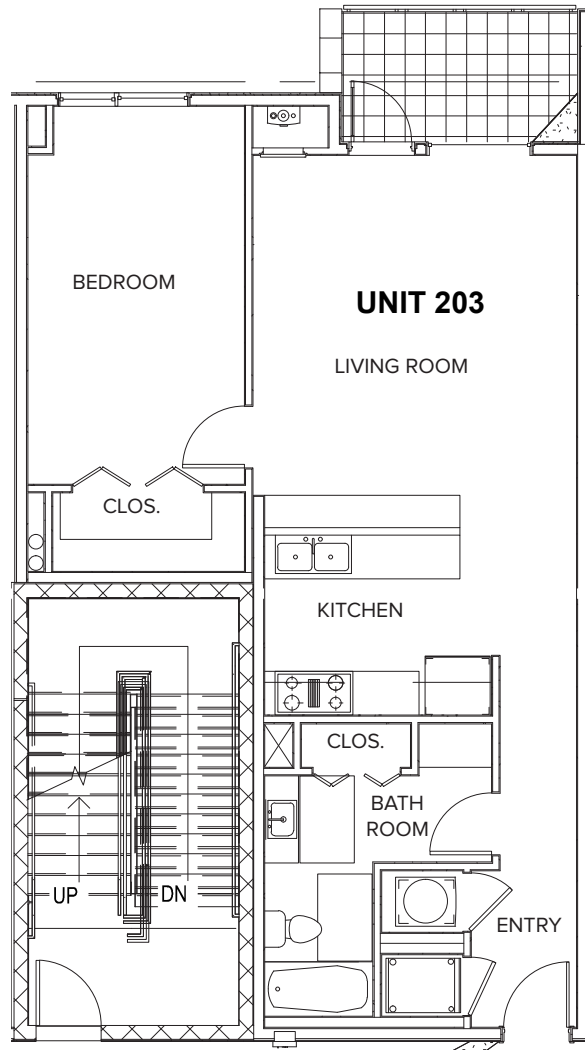
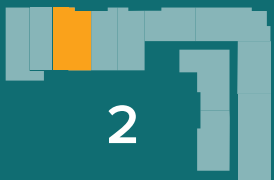


BEDROOM 9'X11'
 LIVING ROOM 9'X15'
 BALCONY 76 SQ.FT.

UNIT 203



1 BED
1 BATH
889 SF

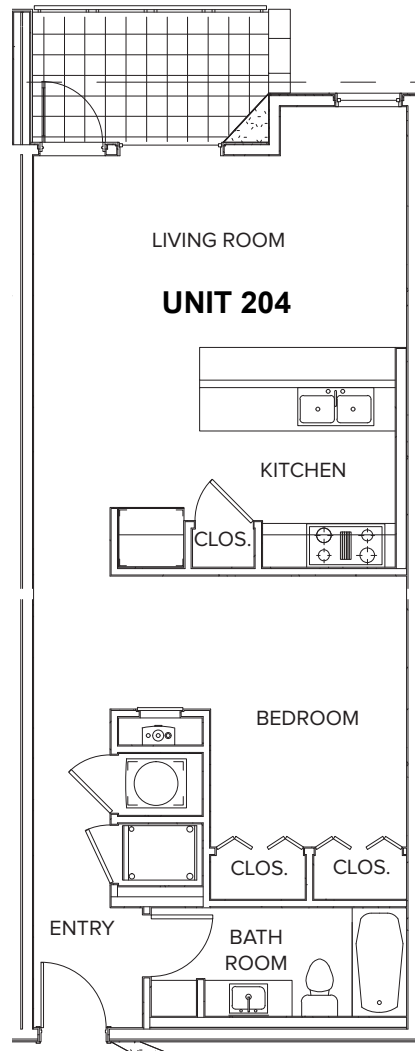
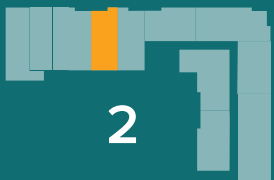


| | | |
|-------------|-------|-----------|
| BEDROOM | | 10'X17' |
| LIVING ROOM | | 15'X16' |
| BALCONY | | 76 SQ.FT. |

UNIT 204

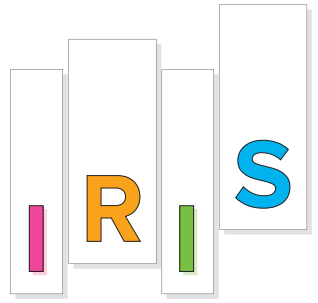


1 BED
1 BATH
764 SF

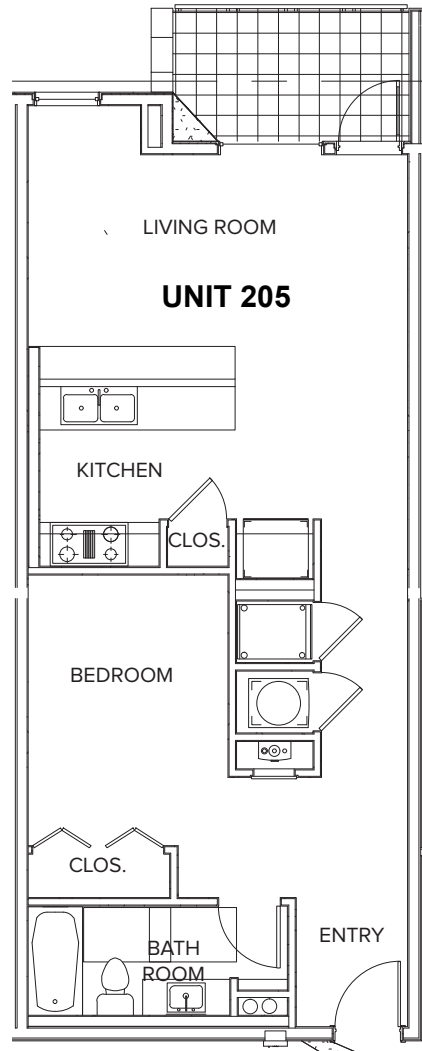
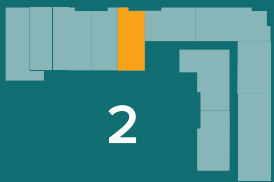


| | | |
|-------------|-------|-----------|
| BEDROOM | | 9'X12' |
| LIVING ROOM | | 9'X17' |
| BALCONY | | 76 SQ.FT. |

UNIT 205

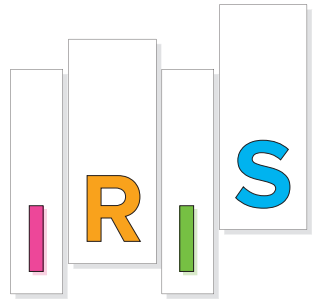


1 BED
1 BATH
742 SF

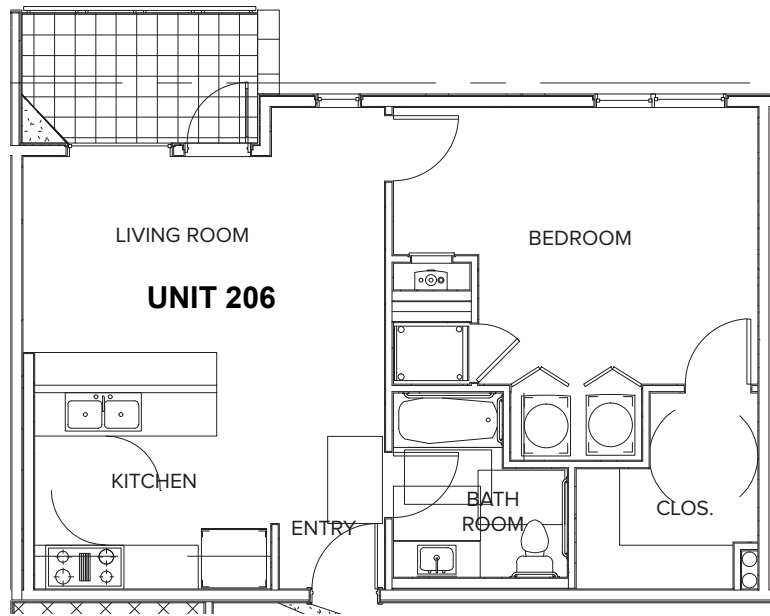
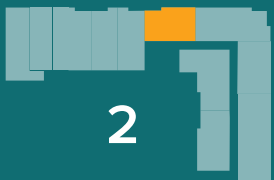


- BEDROOM 9'X12'
- LIVING ROOM 9'X17'
- BALCONY 76 SQ.FT.

UNIT 206



1 BED
1 BATH
783 SF

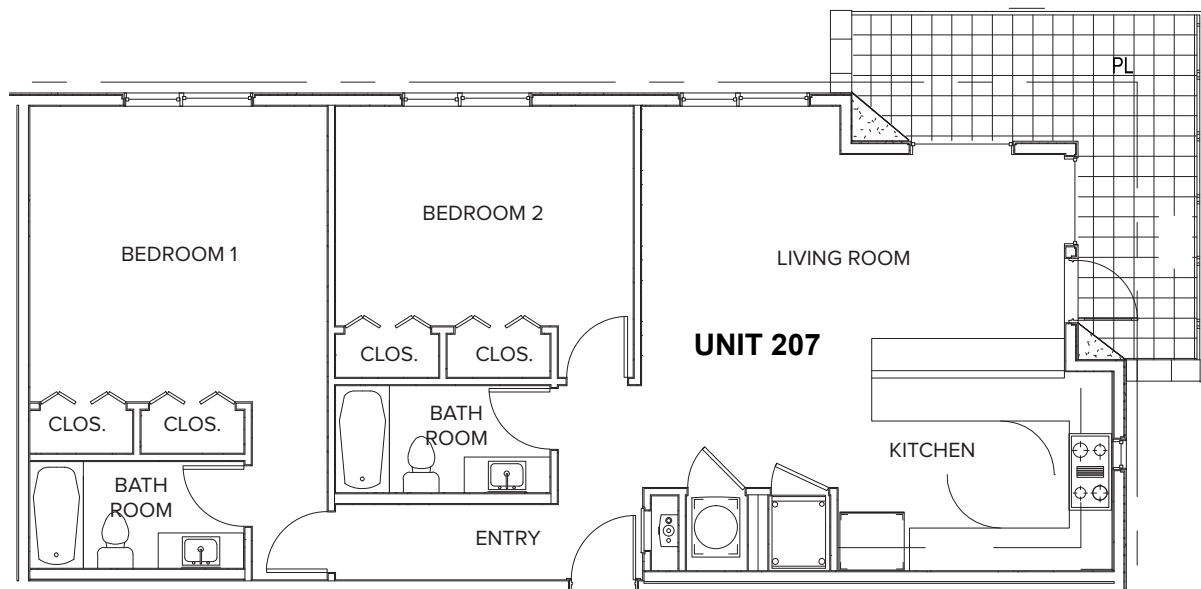
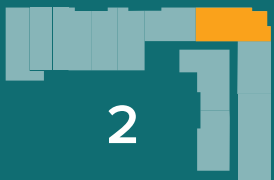


| | | |
|-------------|-------|-----------|
| BEDROOM | | 13'X13' |
| LIVING ROOM | | 9'X17' |
| BALCONY | | 76 SQ.FT. |

UNIT 207



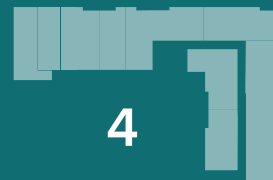
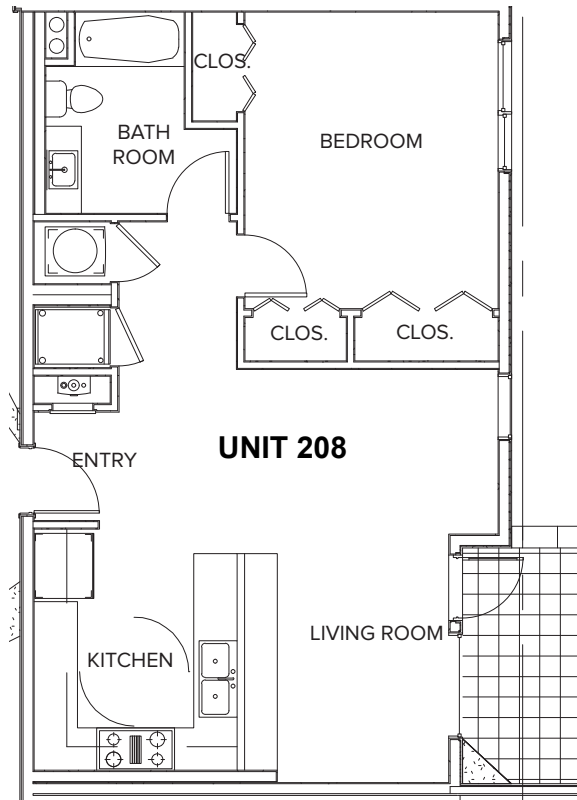
2 BED
2 BATH
1,151 SF



| | | |
|-------------|-------|-----------|
| BEDROOM 1 | | 14'X14' |
| BEDROOM 2 | | 10'X14' |
| LIVING ROOM | | 11'X20' |
| BALCONY | | 76 SQ.FT. |

UNIT 208

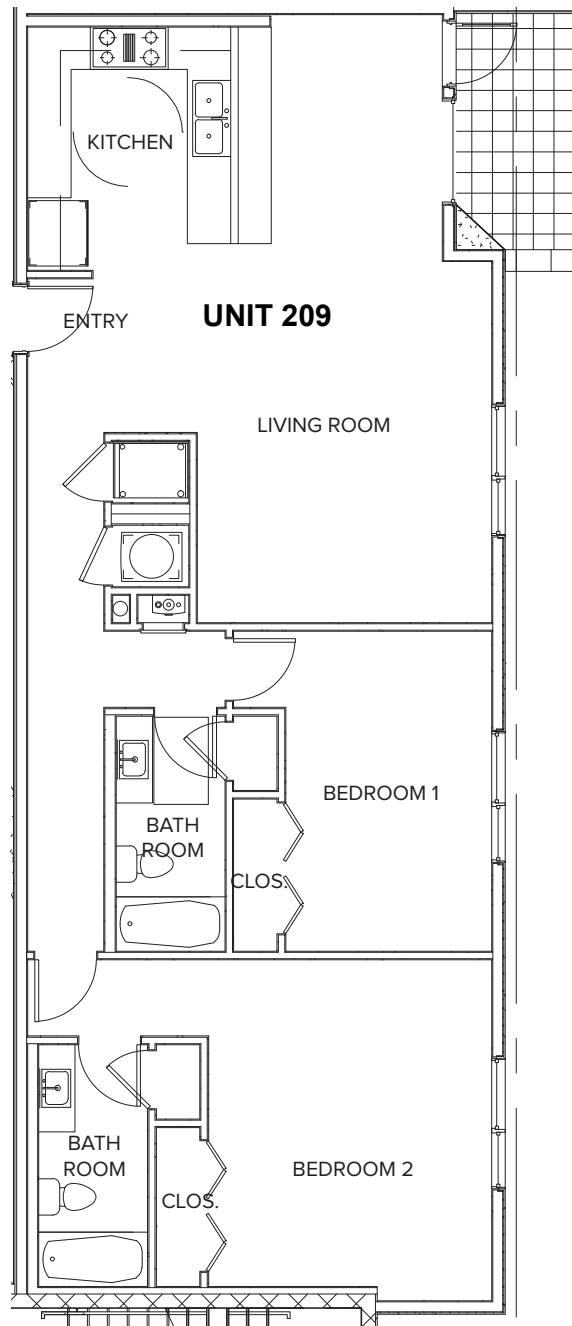
1 BED
1 BATH
776 SF



| | | |
|-------------|-------|------------|
| BEDROOM | | 12'X14' |
| LIVING ROOM | | 8'X19' |
| BALCONY | | 182 SQ.FT. |

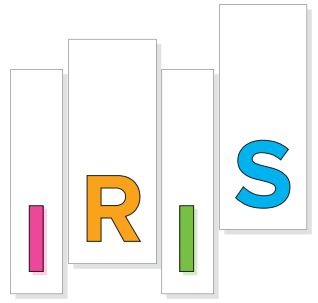
UNIT 209

2 BED
2 BATH
1,290 SF

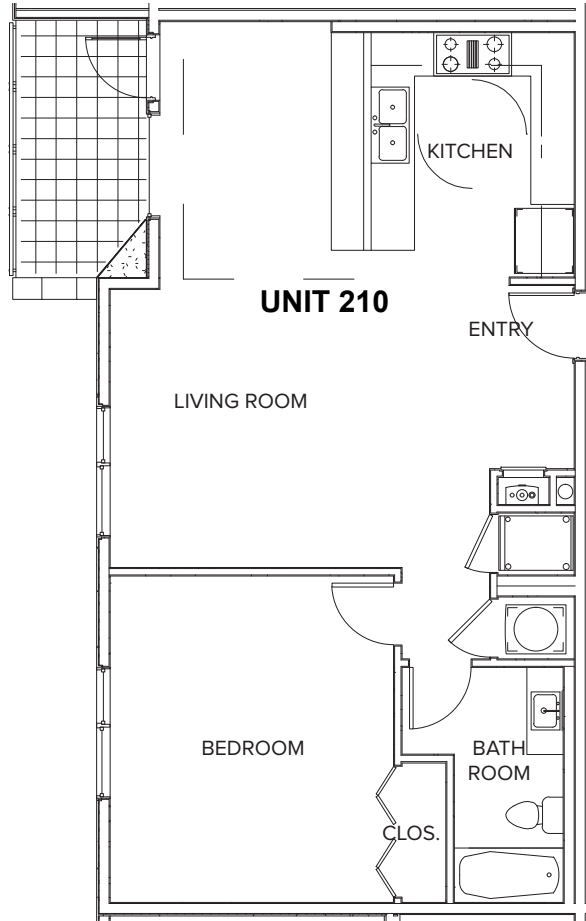


| | | |
|-------------|-------|-----------|
| BEDROOM 1 | | 10'X15' |
| BEDROOM 2 | | 13'X15' |
| LIVING ROOM | | 14'X17' |
| BALCONY | | 76 SQ.FT. |

UNIT 210



1 BED
1 BATH
934 SF

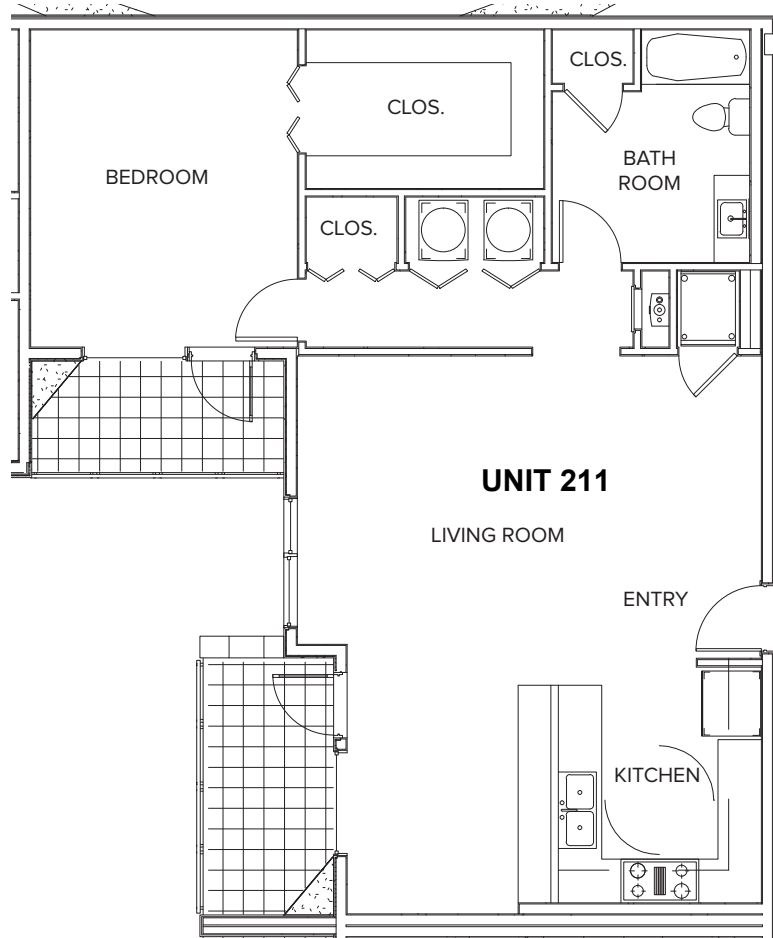


| | | |
|-------------|-------|-----------|
| BEDROOM | | 13'X15' |
| LIVING ROOM | | 13'X17' |
| BALCONY | | 76 SQ.FT. |

UNIT 211



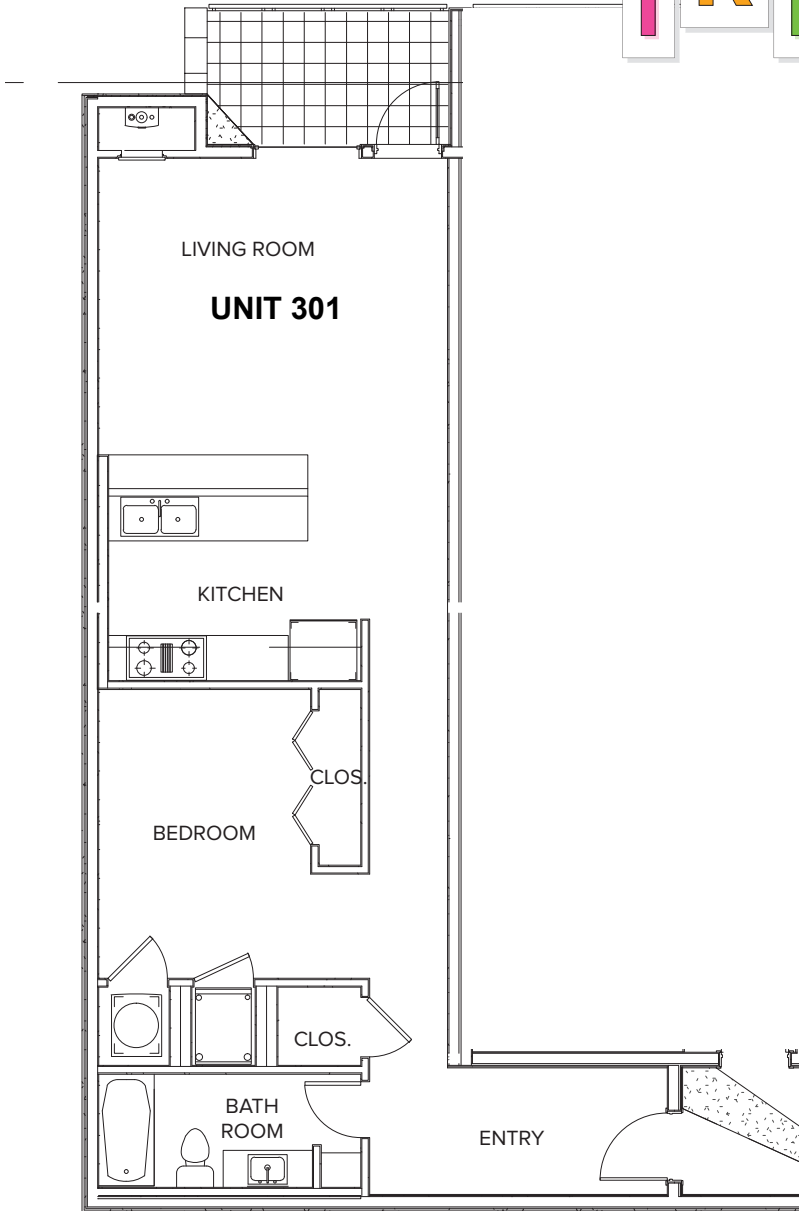
1 BED
1 BATH
990 SF



| | | |
|-------------|-------|------------|
| BEDROOM | | 12'X15' |
| LIVING ROOM | | 15'X21' |
| BALCONY | | 141 SQ.FT. |

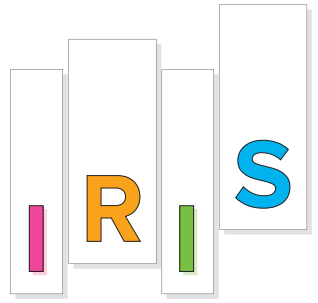
UNIT 301

1 BED
1 BATH
839 SF

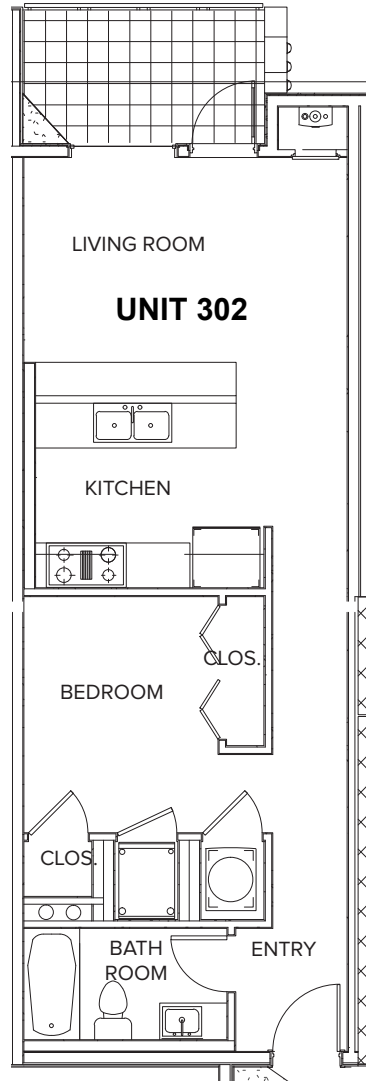
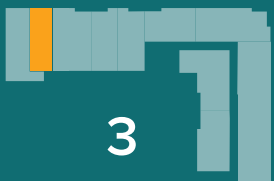


- BEDROOM 1 10'X13'
- LIVING ROOM 13'X17'
- BALCONY 76 SQ.FT.

UNIT 302



1 BED
1 BATH
655 SF



| | | |
|-------------|-------|-----------|
| BEDROOM 1 | | 9'X11' |
| LIVING ROOM | | 9'X11' |
| BALCONY | | 76 SQ.FT. |

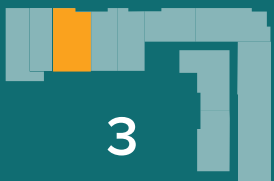
UNIT 303



2 BED
2 BATH
889 SF



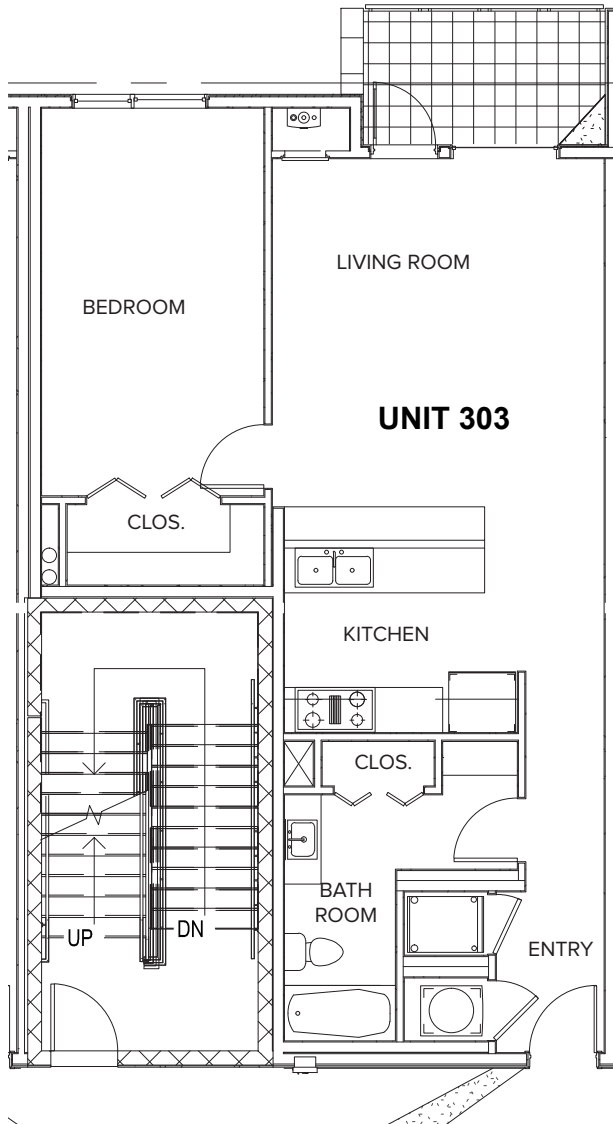
2



3



4



| | | |
|-------------|-------|-----------|
| BEDROOM | | 10'X17' |
| LIVING ROOM | | 15'X16' |
| BALCONY | | 76 SQ.FT. |

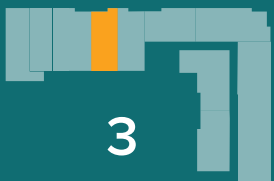
UNIT 304



1 BED
1 BATH
764 SF



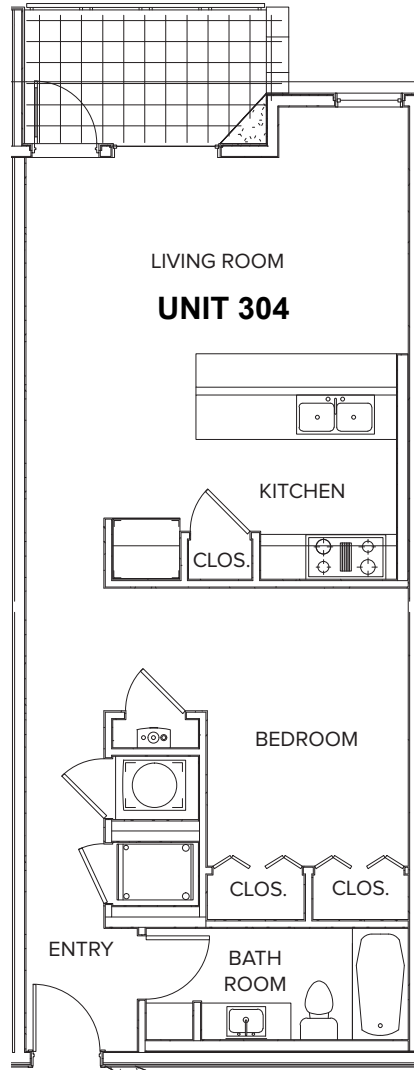
2



3



4



| | | |
|-------------|-------|------------|
| BEDROOM | | 9'X12' |
| LIVING ROOM | | 9'X12' |
| BALCONY | | 137 SQ.FT. |

UNIT 305



2 BED
2 BATH
1,525 SF



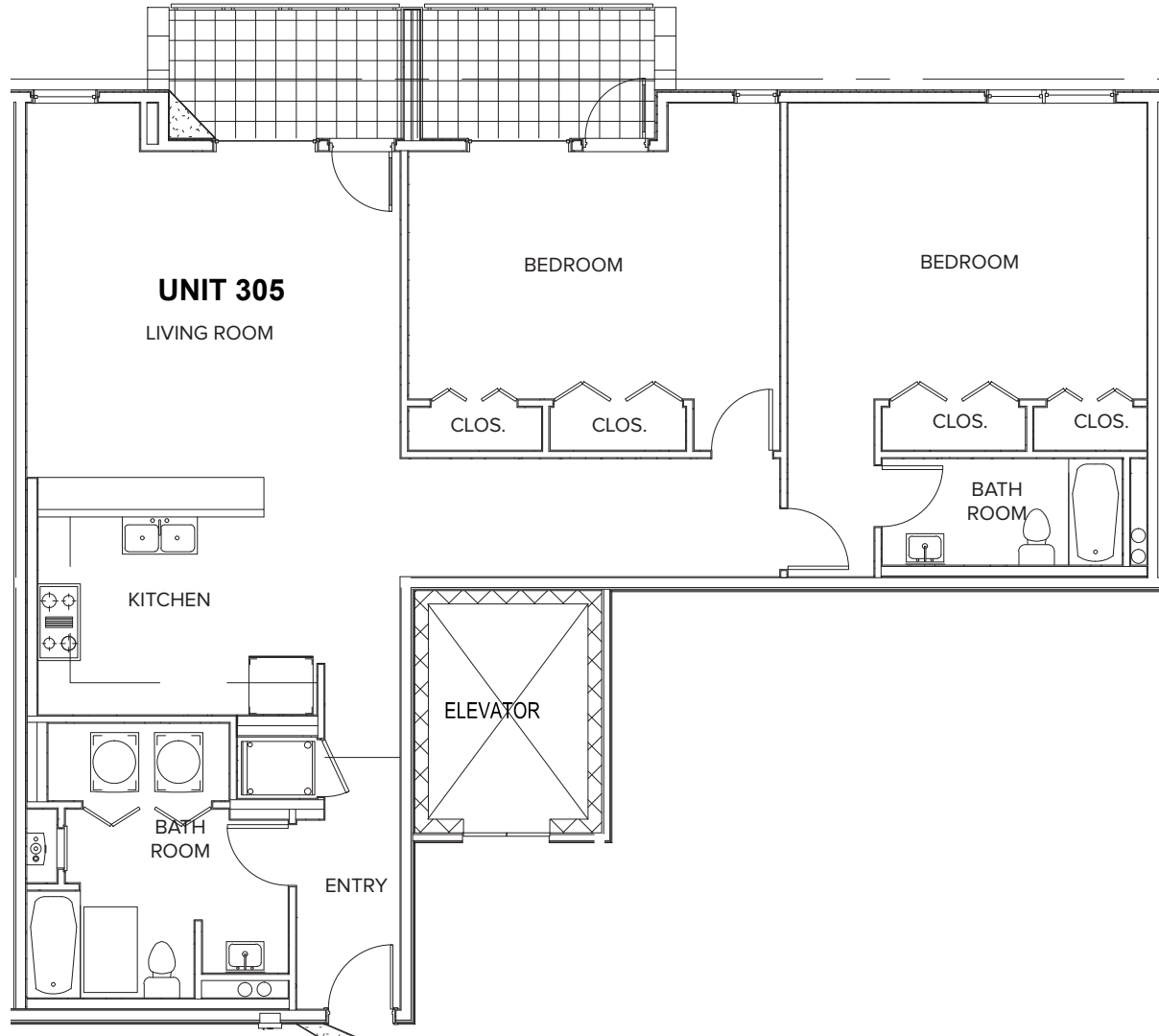
2



3



4



| | | |
|-------------|-------|------------|
| BEDROOM 1 | | 12'X17' |
| BEDROOM 2 | | 14'X17' |
| LIVING ROOM | | 17'X18' |
| BALCONY | | 152 SQ.FT. |

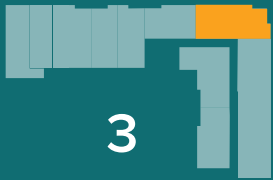
UNIT 306



2 BED
2 BATH
1,151 SF



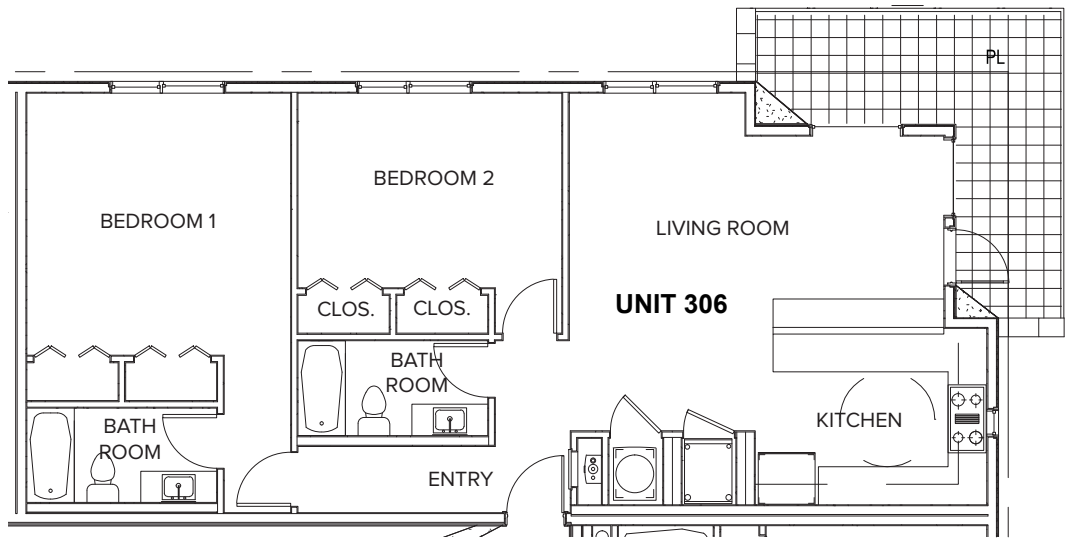
2



3



4



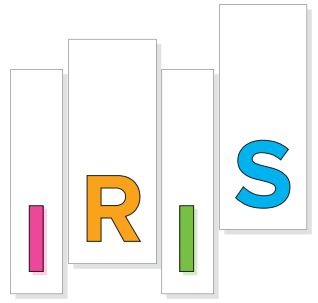
| | | |
|-------------|-------|------------|
| BEDROOM 1 | | 14'X14' |
| BEDROOM 2 | | 10'X14' |
| LIVING ROOM | | 11'X20' |
| BALCONY | | 182 SQ.FT. |



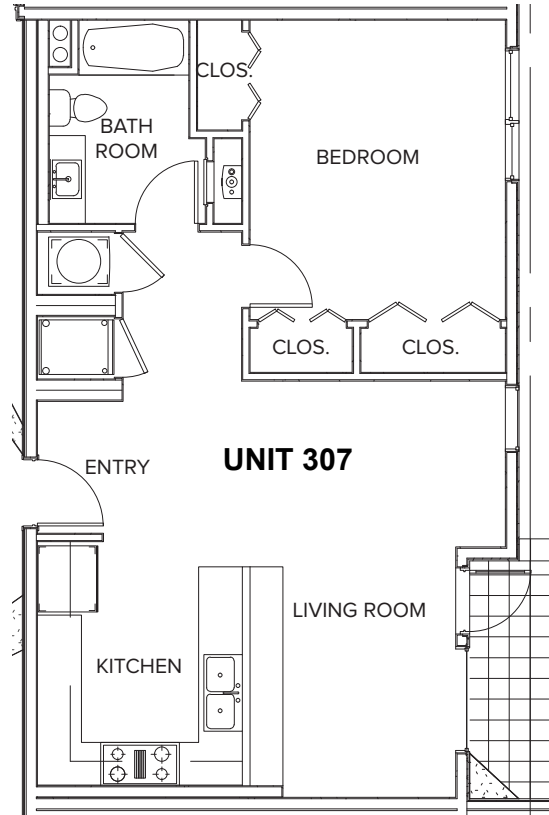
www.austintown.com

All prices, features and plans are subject to change without notice. Square footage is approximate. No representation or warranties either expressed or implied. Are made as to the accuracy of the information herein or with respect to the suitability, usability, merchantability or conditions of any property herein described. All rights Reserved. Austin Modern Lofts 2023

UNIT 307



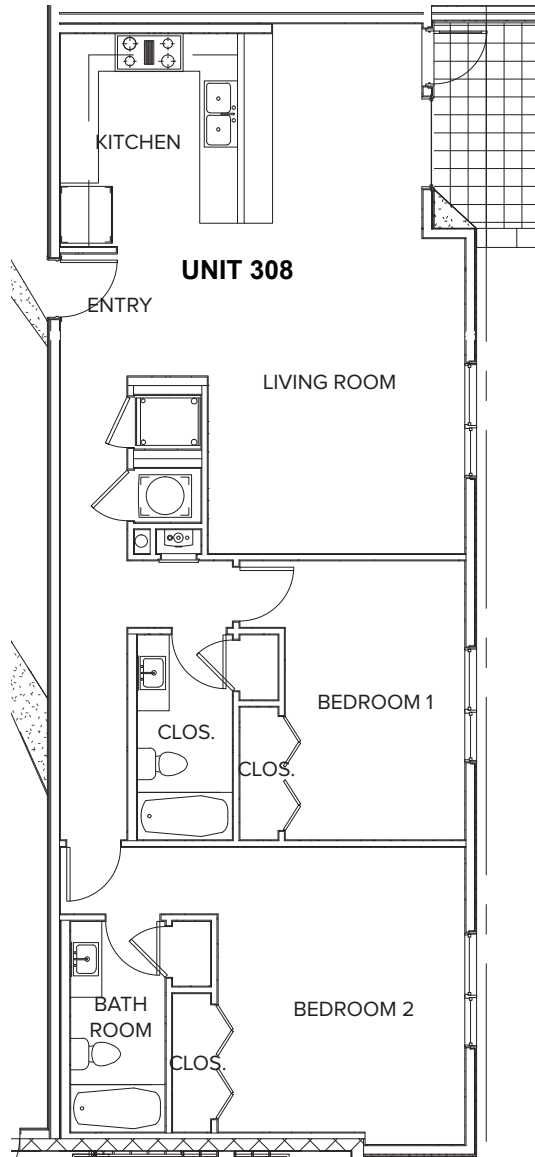
1 BED
1 BATH
776 SF



| | | |
|-------------|-------|-----------|
| BEDROOM | | 12'X14' |
| LIVING ROOM | | 8'X19' |
| BALCONY | | 76 SQ.FT. |

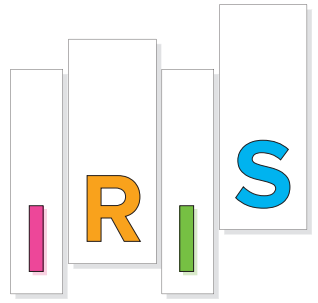
UNIT 308

2 BED
2 BATH
1,290 SF



| | | |
|-------------|-------|-----------|
| BEDROOM 1 | | 10'X15' |
| BEDROOM 2 | | 13'X15' |
| LIVING ROOM | | 14'X17' |
| BALCONY | | 76 SQ.FT. |

UNIT 309



1 BED
1 BATH
934 SF



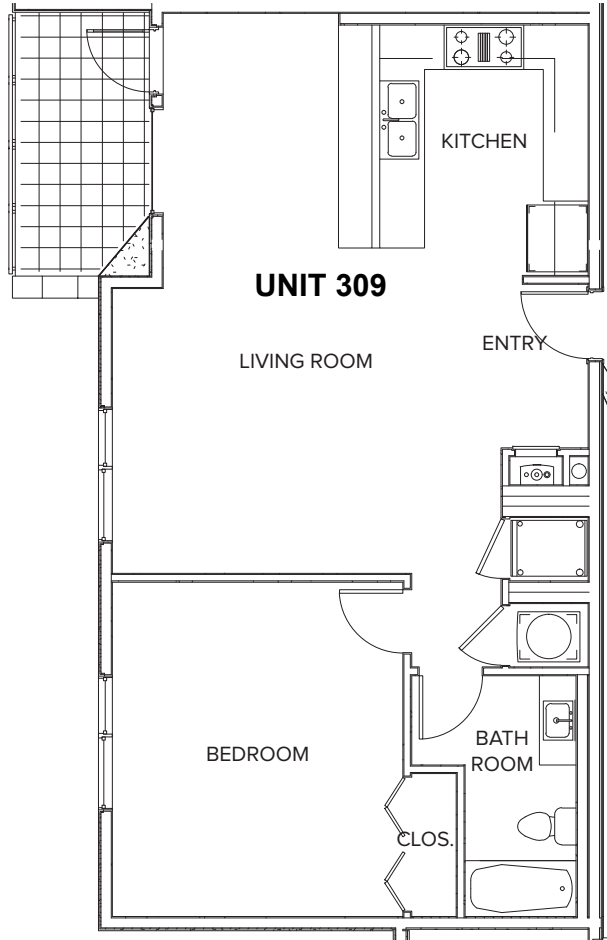
2



3



4

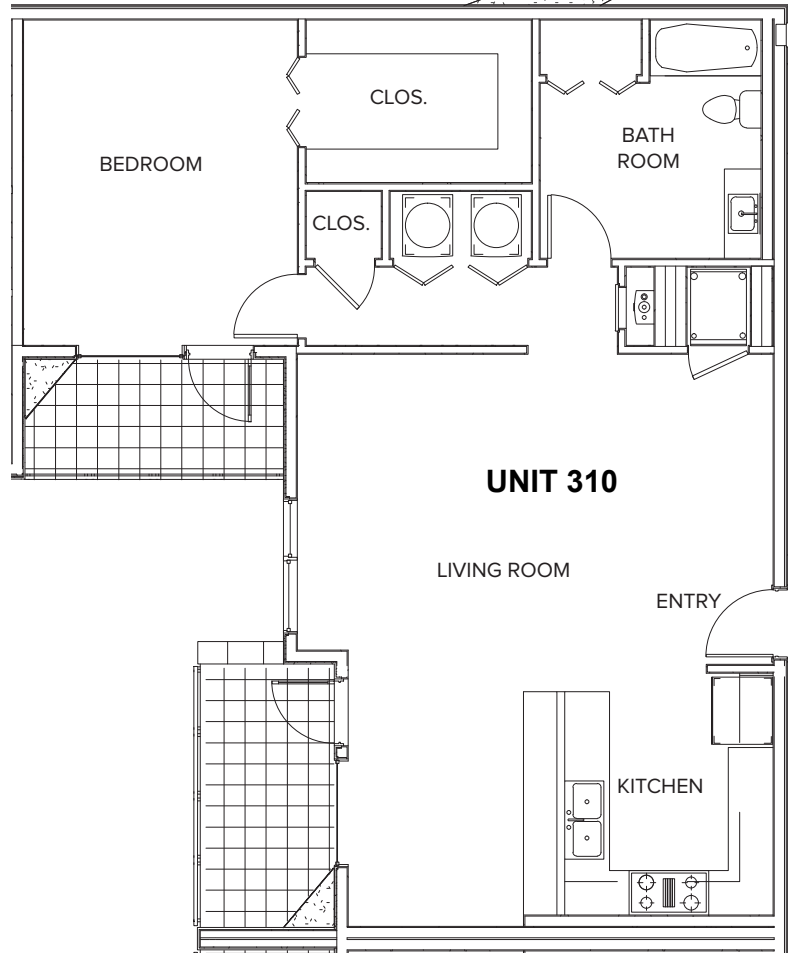


| | | |
|-------------|-------|-----------|
| BEDROOM 1 | | 13'X15' |
| LIVING ROOM | | 13'X17' |
| BALCONY | | 76 SQ.FT. |

UNIT 310



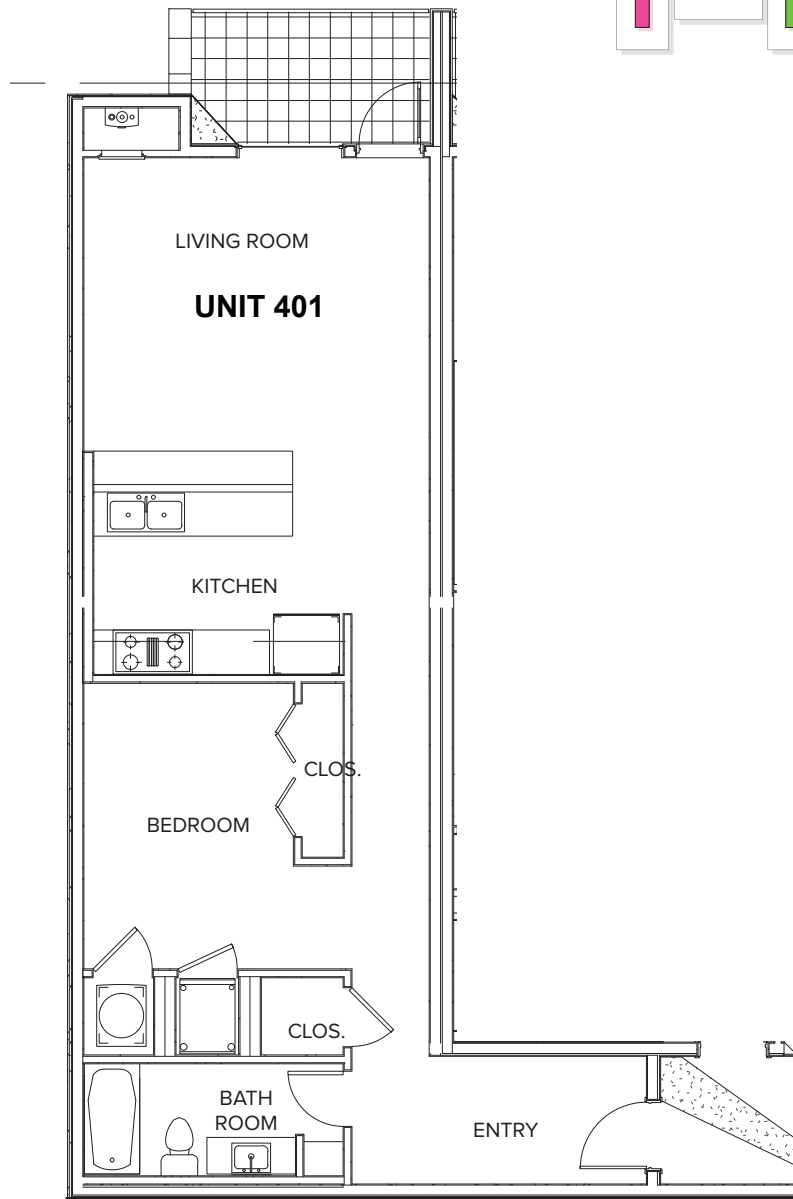
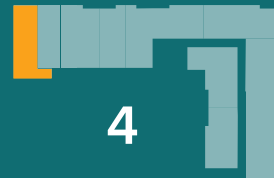
1 BED
1 BATH
933 SF



| | | |
|-------------|-------|------------|
| BEDROOM 1 | | 12'X15' |
| LIVING ROOM | | 15'X21' |
| BALCONY | | 141 SQ.FT. |

UNIT 401

1 BED
1 BATH
839 SF



| | | |
|-------------|-------|-----------|
| BEDROOM 1 | | 10'X13' |
| LIVING ROOM | | 13'X17' |
| BALCONY | | 76 SQ.FT. |

UNIT 402



1 BED
1 BATH
655 SF



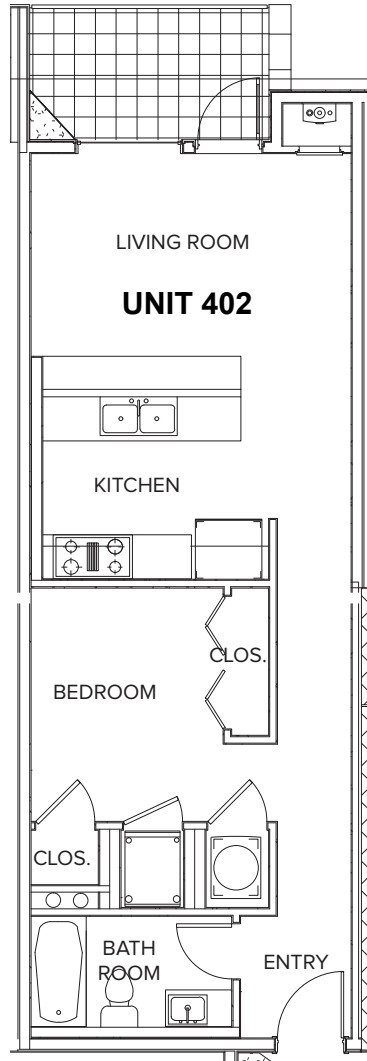
2



3



4



BEDROOM 9'X11'
LIVING ROOM 9'X11'
BALCONY 76 SQ.FT.

UNIT 403



1 BED
1 BATH
889 SF



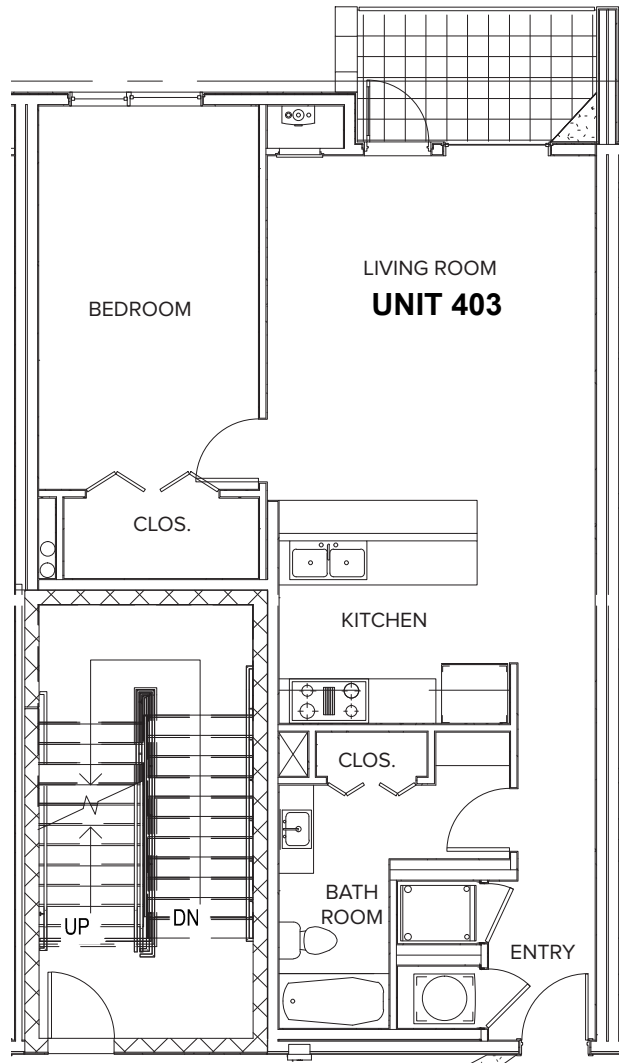
2



3



4



| | | |
|-------------|-------|-----------|
| BEDROOM | | 10'X17' |
| LIVING ROOM | | 15'X16' |
| BALCONY | | 76 SQ.FT. |

UNIT 404



1 BED
1 BATH
764 SF



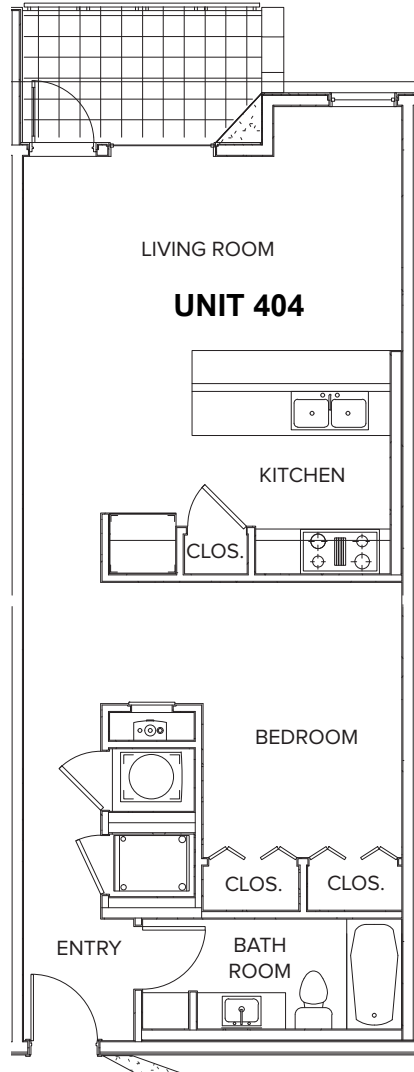
2



3

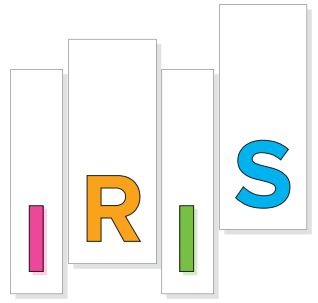


4

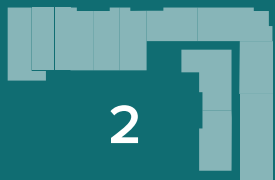


| | | |
|-------------|-------|-----------|
| BEDROOM | | 9'X12' |
| LIVING ROOM | | 9'X17' |
| BALCONY | | 76 SQ.FT. |

UNIT 405



2 BED
2 BATH
1,677 SF



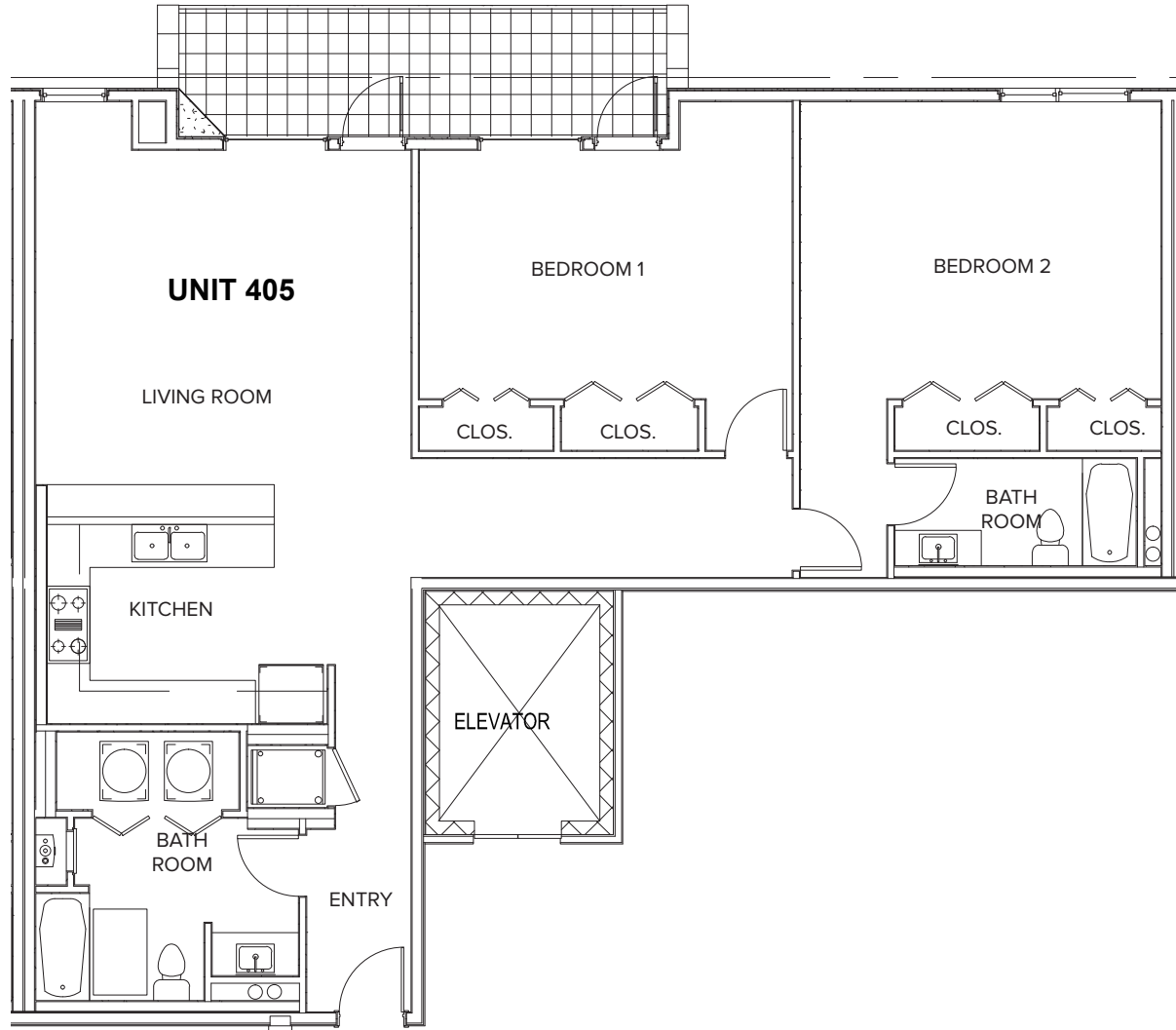
2



3



4

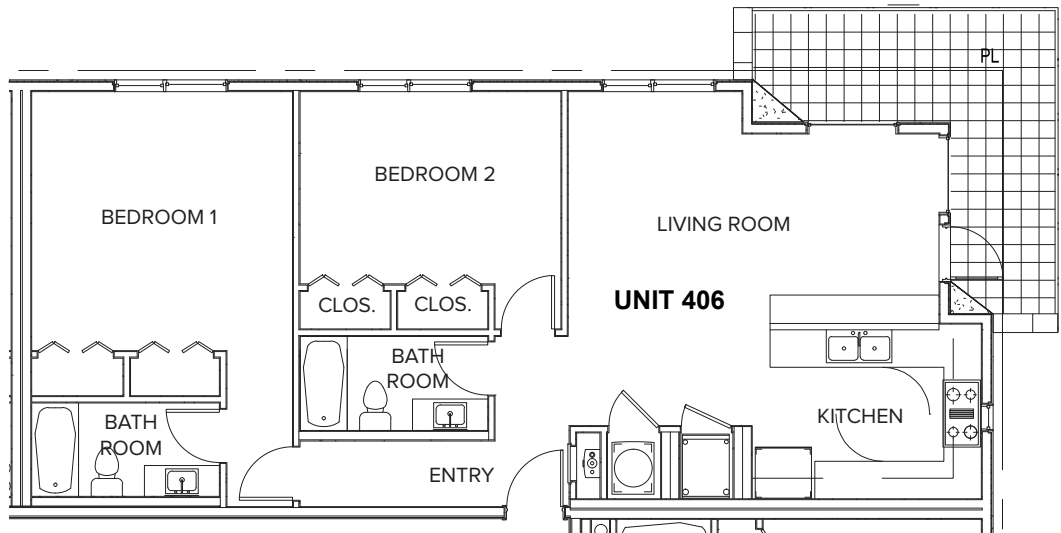


| | | |
|-------------|-------|------------|
| BEDROOM 1 | | 12'X17' |
| BEDROOM 2 | | 14'X17' |
| LIVING ROOM | | 17'X18' |
| BALCONY | | 152 SQ.FT. |

UNIT 406



2 BED
2 BATH
1,151 SF



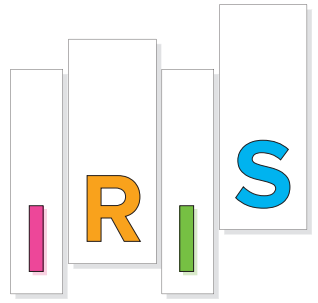
| | | |
|-------------|-------|------------|
| BEDROOM 1 | | 14'X14' |
| BEDROOM 2 | | 10'X14' |
| LIVING ROOM | | 11'X20' |
| BALCONY | | 182 SQ.FT. |



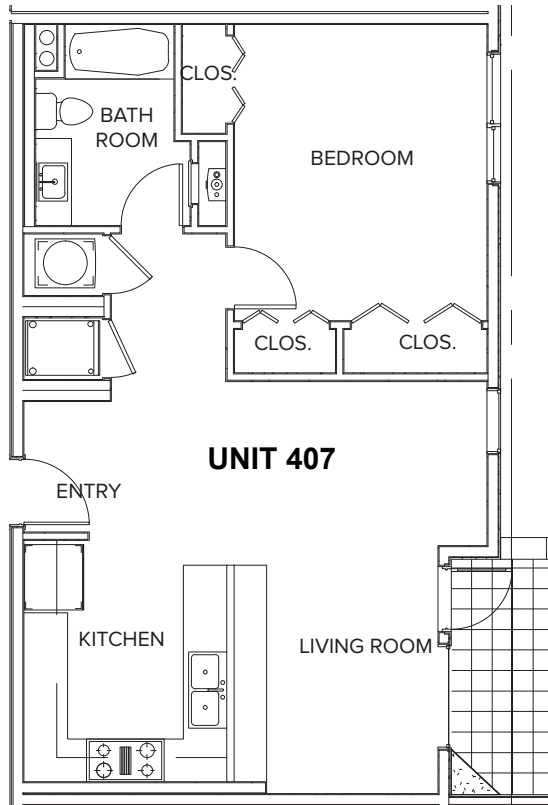
www.austintown.com

All prices, features and plans are subject to change without notice. Square footage is approximate. No representation or warranties either expressed or implied. Are made as to the accuracy of the information herein or with respect to the suitability, usability, merchantability or conditions of any property herein described. All rights Reserved. Austin Modern Lofts 2023

UNIT 407



1 BED
1 BATH
776 SF



2



3



4

| | | |
|-------------|-------|-----------|
| BEDROOM | | 12'X14' |
| LIVING ROOM | | 8'X19' |
| BALCONY | | 76 SQ.FT. |

UNIT 408

2 BED
2 BATH
1,290 SF



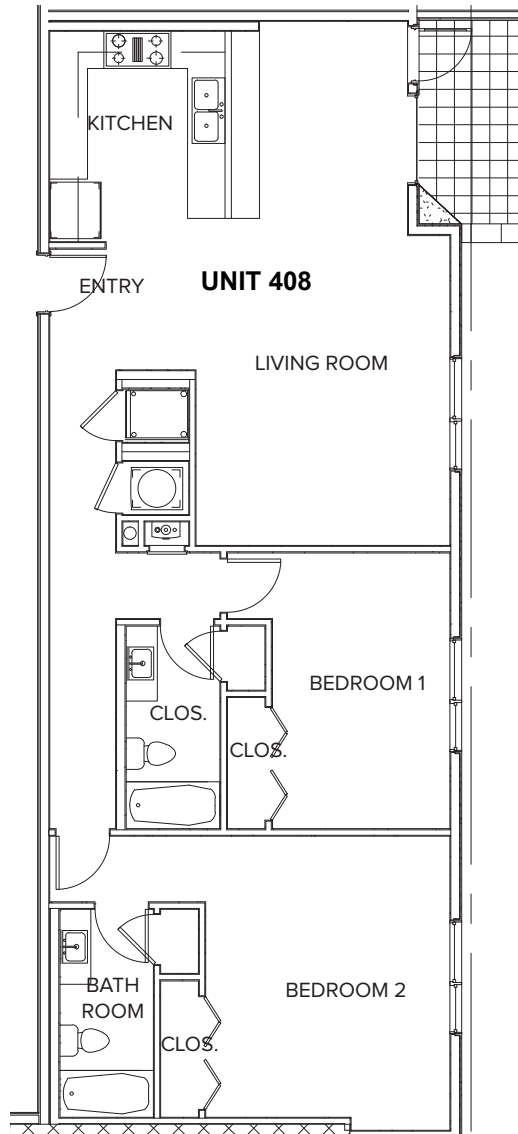
2



3



4



| | | |
|-------------|-------|-----------|
| BEDROOM 1 | | 10'X15' |
| BEDROOM 2 | | 13'X15' |
| LIVING ROOM | | 14'X17' |
| BALCONY | | 76 SQ.FT. |

UNIT 409



1 BED
1 BATH
934 SF



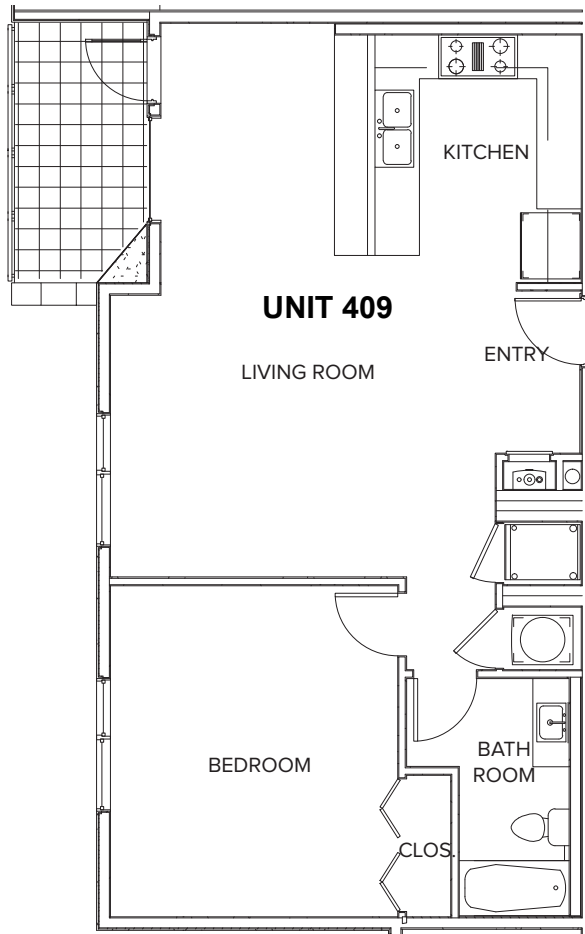
2



3



4

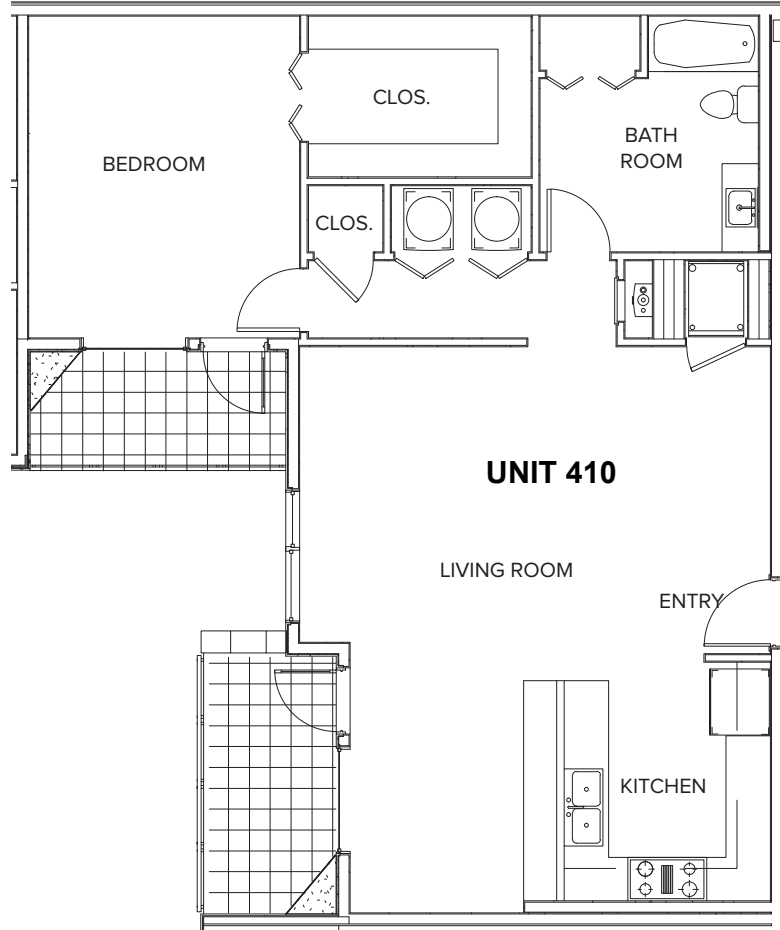


| | | |
|-------------|-------|-----------|
| BEDROOM | | 13'X15' |
| LIVING ROOM | | 13'X17' |
| BALCONY | | 76 SQ.FT. |

UNIT 410



1 BED
1 BATH
990 SF



| | | |
|-------------|-------|------------|
| BEDROOM | | 12'X15' |
| LIVING ROOM | | 15'X21' |
| BALCONY | | 141 SQ.FT. |