



Museum Square at N Henderson & Peach

403 N Henderson Street, Fort Worth, TX 76102

Price range: \$525s-610s



- The newest Luxury Town-Home Community in Downtown Fort Worth
- Less than a mile from Sundance Square and Bass Performance Hall
- Stunning views from 4th story roof top deck of downtown and Trinity River
- The recently named best downtown in the nation (according to livability.com) at your doorstep
- Located at Mile 0 of over 40 miles of trails along the Trinity River and its tributaries
- Great for walking, running, cycling or on horseback and for access to Trinity River events
- At the gateway to the Trinity River Vision project and Fun Things to Do on Panther Island
- Drive-In, Brew Pubs, Ice Skate and the largest fireworks show in North Texas on the 4th

For More Information

Aubrey Roberts
Sales Consultant

 469-678-9012

 AubreyR@intown-homes.com

 [facebook.com/intownhomes](https://www.facebook.com/intownhomes)

 [instagram.com/intownliving](https://www.instagram.com/intownliving)

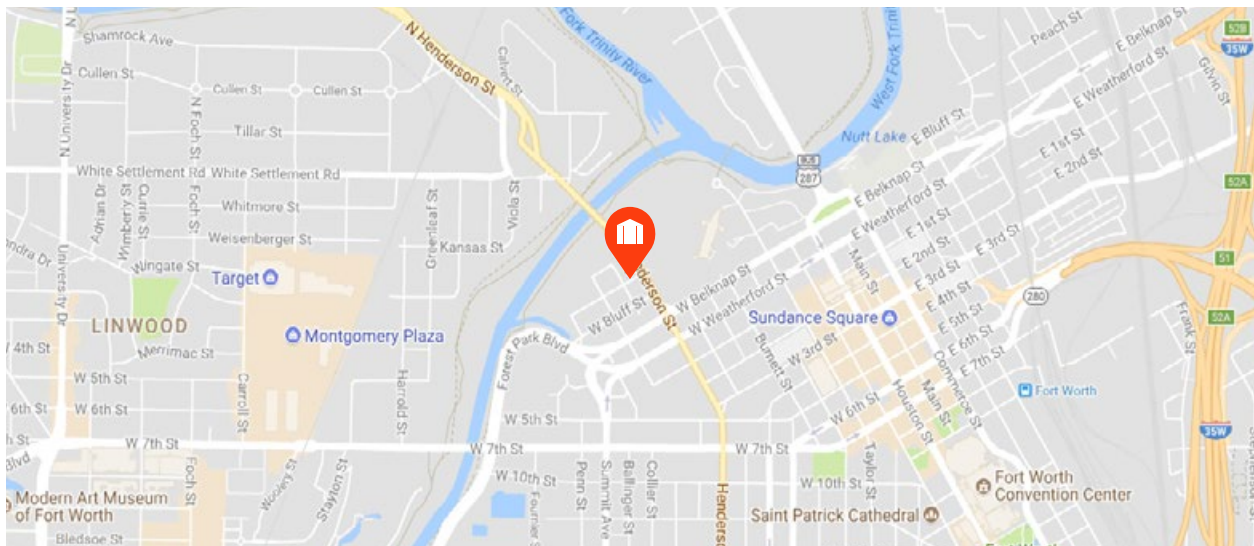
Site Plan



W. PEACH STREET

Artist rendering only. Actual colors and plans may vary significantly.

Location





Custom Features

Elegant Exteriors

- Designs from InTown Homes architects
- Eight-foot mahogany entry door
- 2nd story balconies and large roof top decks
- Full gutters around entire home
- Reclaimed brick exterior fronts and sides, plus cast stone entrances
- **Nichiha** stucco board rear
- Attached 2-car garage with ample storage space
- Professionally designed landscape package
- Energy efficient, double pane windows with Low-E insulated glass
- Decorative and functional exterior lighting

Inspiring Interiors

- Solid Red Oak wood floors throughout
- Wrought iron spindles
- Triple-stacked crown ceiling molding in main living area
- 6' to 8' base molding throughout home
- Eight-foot raised panel interior doors
- Optional private residential elevator
- Elegant stairways with hardwood tread
- Rounded sheetrock corners
- 12' ceilings down and 9' to 12' ceilings up

Luxurious Master Suites

- Single ceiling molding in master bedroom
- Marble, granite or quartz counter-tops
- **Natural Stone** tile floors and shower surrounds
- Deep 72" soaker tubs
- Oversized glass enclosed shower with bench seat
- Dual vanities
- Framed mirrors

- Oversized expansive walk-in closets with pull-down storage

Gourmet Kitchens

- Spacious gourmet kitchens
- **Granite** countertops
- Upgraded stacked cabinetry with soft-close doors and drawers and some glass fronts
- **Bosch Stainless** 36" 5-burner cooktop with continuous cast-iron grates
- **Bosch Stainless** single wall oven
- **Bosch Stainless** wall microwave
- **Bosch Stainless** fully integrated dishwasher
- **Bosch Stainless** vent hood
- Under mount sinks with garbage disposal
- Space for wine-fridge in eat-in-island
- **Natural Stone** backsplash
- **Insinkerator** Badger 1/3 horsepower disposal
- Ice maker connection for refrigerator (per plan)
- Recessed can lights with LED bulbs
- Under cabinet lighting

Quality Construction

- Engineered, certified and inspected foundations
- 3/4 inch solid Red Oak floors throughout
- Five-point extensive inspection process: structural, frame, exterior, air infiltration and quality assurance
- Fully installed 2GIG alarm system with home automation w/ remote capability
- RG6 digital coax cable for cable and internet
- CAT5 wiring for phone and home internet
- Pre-wire for surround sound in family room

Continuing a policy for constant improvement, builder reserves the right to make modifications including changes, additions or deletions in the features, plans and specifications, and to substitute material of similar quality without notice or prior obligation. *Features may be available only in specific plans and/or in specific communities. The availability of these features is subject to change without notice. Features on homes constructed prior to this printing may have different features. No representation or warranties either expressed or implied are made as to the accuracy of the information herein or with respect to the suitability, usability, feasibility, merchantability or conditions of any property herein described. Rev. 08-26-10 All Rights Reserved. ©InTown Homes 2017





Eco-Hip™ for Sustainable Green Living

- InTown Homes Eco-Hip™ program meets and exceeds the New International Energy Code Standard
- 2 x 6 exterior side-walls increase structural rigidity
- Dual flush toilets
- **R-19 Insulation** in exterior walls
- **R-38 Insulation** in attic
- Air sealing package
- **Bosch** or **Rheem**, gas tank-less water heaters
- **CertainTeed Air Renew Drywall** provides mold and moisture resistance throughout home while removing VOCs (Volatile Organic Compounds)
- DOW WEATHERMATE™ weather barrier system
- **Lennox** 16.00 SEER HVAC system with two-stage compressor
- **Lennox Harmony III™ Zone System** - independent zoning of each floor level for controlled comfort and efficiency
- MERV 10 - high performance media air filter
- Programmable thermostats
- Radiant barrier in attic
- Low-E double pane energy efficient vinyl windows
- **Energy Star®** appliances
- Duct blaster and blower door testing
- Low VOC paint
- **Hansgrohe** plumbing package throughout

Building Partners



Continuing a policy of constant improvement, builder reserves the right to make modifications including changes, additions or deletions in the features, plans and specifications, and to substitute material of similar quality without notice or prior obligation. *Features may be available only in specific plans and/or in specific communities. The availability of these features is subject to change without notice. Features on homes constructed prior to this printing may have different features. No representation or warranties either expressed or implied are made as to the accuracy of the information herein or with respect to the suitability, usability, feasibility, merchantability or conditions of any property herein described. Rev. 08-26-10 All Rights Reserved. ©InTown Homes 2017



908 W Peach St, Fort Worth, TX 76102

💰 \$524,900

🛏 3 Bedrooms

🚿 3.5 Bathrooms

🏠 2,338 sqft

- Corner home with great southerly views of downtown from roof top deck and balcony
- Lots of big windows for ample natural light
- Elegant kitchen with walk-in pantry
- Elevator capable



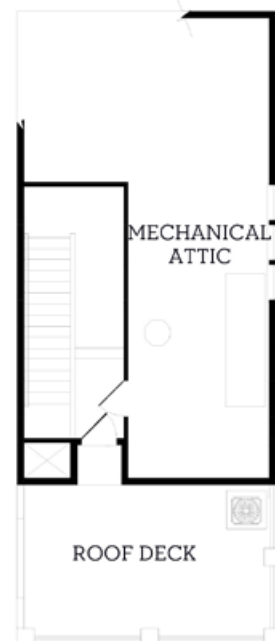
First Floor
425 sqft



Second Floor
855 sqft



Third Floor
955 sqft



Fourth Floor
103 sqft

All prices, features and plans are subject to change without notice. Square footage is approximate. No representation or warranties either expressed or implied are made as to the accuracy of the information herein or with respect to the suitability, usability, feasibility, merchantability or conditions of any property herein described. Rev. 08-26-10 All Rights Reserved. ©InTown Homes 2017



406 Mills St, Fort Worth, TX 76102

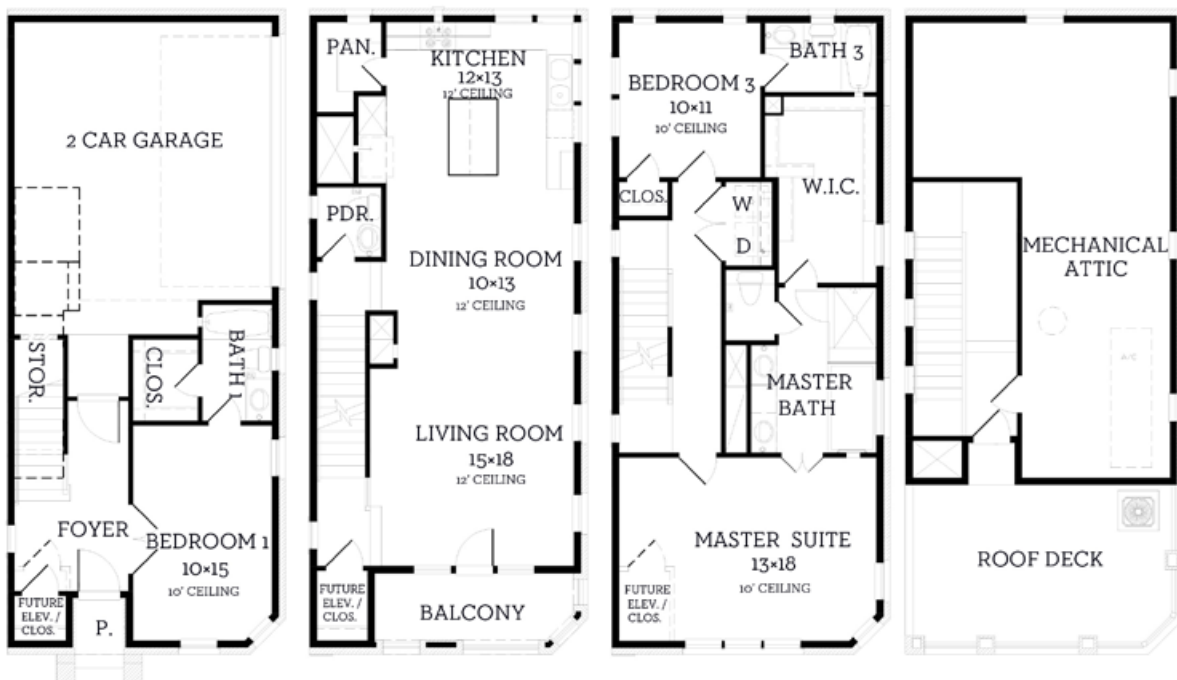
💰 \$549,900

🛏️ 3 Bedrooms

🚿 3.5 Bathrooms

🏠 2,284 sqft

- Stand-alone home with great westerly roof top views of West 7th, The Trinity and beautiful sunsets
- Largest roof top deck on the property
- Lots of big windows all the way around for ample natural light
- Elevator capable



First Floor
426 sqft

Second Floor
836 sqft

Third Floor
925 sqft

Fourth Floor
97 sqft

All prices, features and plans are subject to change without notice. Square footage is approximate. No representation or warranties either expressed or implied are made as to the accuracy of the information herein or with respect to the suitability, usability, feasibility, merchantability or conditions of any property herein described. Rev. 08-26-10 All Rights Reserved. ©InTown Homes 2017



401 N Henderson St, Fort Worth, TX 76102

💰 \$609,900

🛏️ 3 Bedrooms

🚿 3.5 Bathrooms

🏠 2,355 sqft

- Corner home with great views of downtown and Trinity Vision project from roof top deck and balcony
- Lots of big windows for ample natural light
- Secondary baths with stand-up showers with glass doors
- Large Living Room area with balcony access
- Elevator capable



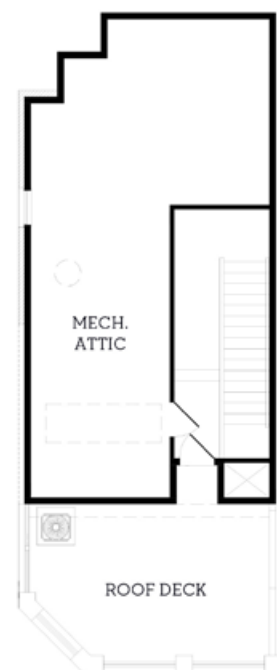
First Floor
411 sqft



Second Floor
875 sqft



Third Floor
974 sqft



Fourth Floor
95 sqft

All prices, features and plans are subject to change without notice. Square footage is approximate. No representation or warranties either expressed or implied are made as to the accuracy of the information herein or with respect to the suitability, usability, feasibility, merchantability or conditions of any property herein described. Rev. 08-26-10 All Rights Reserved. ©InTown Homes 2017



