



# KOLBE FARMS

8707 Park Kolbe Ln.  
Houston, TX 77080

Price range: Low \$400s to \$900s

## Visionary Design

Urban Farmhouse community on 38 acres, inspired by world-renowned architect Andrés Duany

Corridor and Downtown

## Pet-Friendly Spaces

Dog park and thoughtfully designed courtyards for community and comfort

## Unique Homes

"Anti-Cookie Cutter" — Over 150 different floor plans among 400 planned residences

## Family Recreation

Adult and children's swimming pools for year-round enjoyment

## Gate Station

Planned 24-hour manned gatehouse for peace of mind

## Nature & Wellness

Next to the Spring Branch Bike Trail around a scenic 3-acre lake and park

## Prime Location

Easy access to I-10, Hwy 290, 610 Loop, and Beltway 8  
Centrally located between the Energy


Texas premier home builder since 1980.

[IntownHomes.com](http://IntownHomes.com)



## FOR MORE INFORMATION

Thomas Jennings  
Sales Consultant

 832-423-7939

 [thomasj@intownhomes.com](mailto:thomasj@intownhomes.com)

Facebook: @IntownHomes  
Instagram: @IntownLiving  
Phone: (713) 961-3877  
Email: [info@intownhomes.com](mailto:info@intownhomes.com)

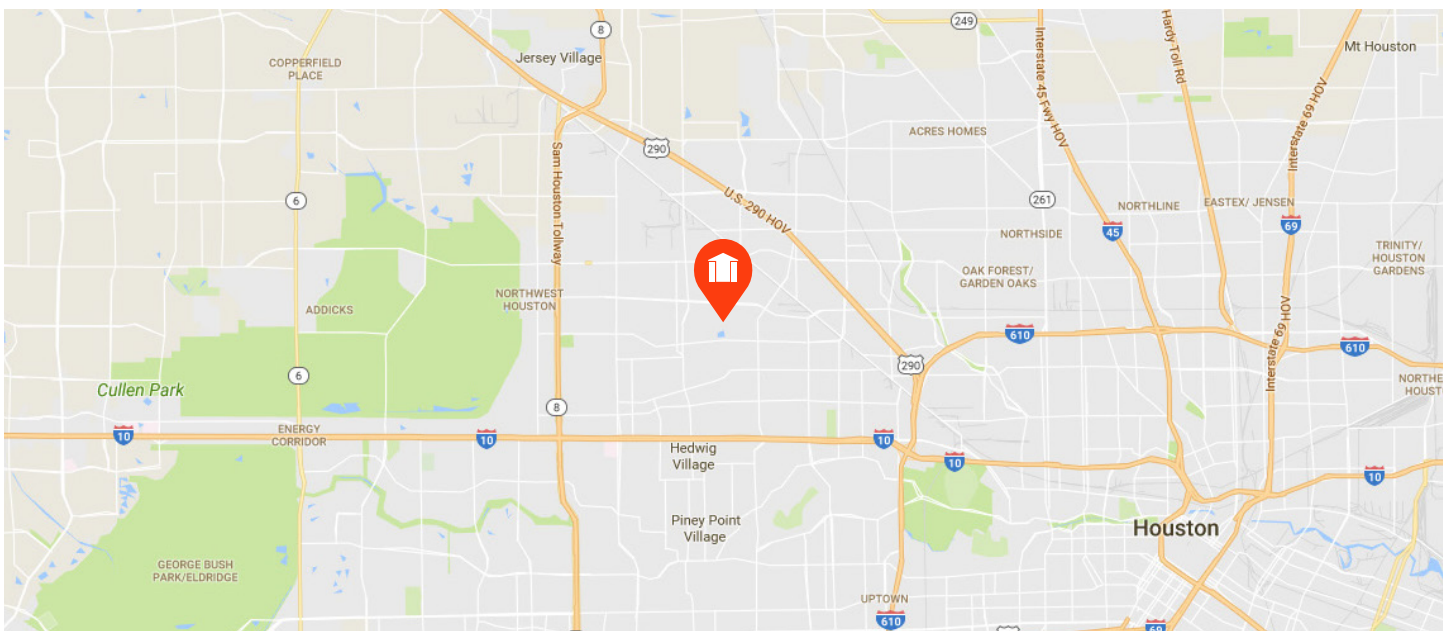
# SITE PLAN



## KOLBE FARMS

Available Home and Homesites are very subject to change.

# LOCATION



# CUSTOM FEATURES



## Elegant Exteriors

- ✓ Custom home from InTown Homes architects - Urban Farmhouse Architecture
- ✓ Slate style composition roof or standing seam roof (per plan / home site)
- ✓ Eight-foot mahogany entry door
- ✓ Nichiha fiber cement siding and stucco board
- ✓ 2-car garage with ample storage space
- ✓ 10' x 10' back patio (per plan)
- ✓ Professionally designed landscape package
- ✓ Slate style composition shingles
- ✓ Energy efficient, double pane windows with Low-E insulated glass
- ✓ Elegant exterior coach lighting

## Inspiring Interiors

- ✓ Wide plank wood flooring Wrought iron spindles
- ✓ Double ceiling moulding in main living area
- ✓ Five-inch base moulding throughout home
- ✓ Eight-foot raised panel interior doors
- ✓ Optional private residential elevator (per plan)
- ✓ Elegant stairways with hardwood tread to third floor
- ✓ Rounded sheetrock corners
- ✓ 10' or 12' ceilings (per plan)

## Luxurious Master Suites

- ✓ Hansgrohe overhead shower head + handheld head
- ✓ Six-foot garden tub (per plan)
- ✓ Oversized glass enclosed seated shower
- ✓ Dual vanities (per plan)
- ✓ Aspect cabinets - soft closing and hardware

## Gourmet Kitchens

- ✓ Spacious gourmet kitchens
- ✓ Granite or quartz countertops
- ✓ Aspect cabinets - soft closing and hardware
- ✓ 5 piece Bosch built-in package or 4 piece Fisher Paykel - both have 36" cooking service (5 burners) and 36" vent hood
- ✓ Bosch or Fisher Paykel single oven
- ✓ Bosch or Fisher Paykel microwave
- ✓ Bosch or Fisher Paykel fully integrated dishwasher
- ✓ Undermount sinks with garbage disposal
- ✓ Natural stone backsplash
- ✓ Insinkerator 1/3 horsepower disposal
- ✓ Recessed can lights with LED bulbs
- ✓ Under cabinet lighting

## Quality Construction

- ✓ Engineered, certified and inspected foundations
- ✓ Five-point extensive inspection process: structural, frame, exterior, air infiltration and quality assurance
- ✓ Engineered flooring system
- ✓ Fully installed alarm system with home automation
- ✓ RG6 digital coax cable for cable and internet
- ✓ CAT5 wiring for phone and home internet
- ✓ Pre-wire for surround sound in family room

Continuing a policy for constant improvement, builder reserves the right to make modifications including changes, additions or deletions in the features, plans and specifications, and to substitute material of similar quality without notice or prior obligation. \*Features may be available only in specific plans and/or in specific communities. The availability of these features is subject to change without notice. Features on homes constructed prior to this printing may have different features. No representation or warranties either expressed or implied are made as to the accuracy of the information herein or with respect to the suitability, usability, feasibility, merchantability or conditions of any property herein described. Rev. 08-26-10 All Rights Reserved. ©InTown Homes 2025





### Eco-Hip™ for Sustainable Green Living

- ✓ InTown Homes Eco-Hip™ program meets and exceeds the New International Energy Code Standard
- ✓ 2 x 6 exterior walls increase structural rigidity
- ✓ Strategically used engineered wood
- ✓ Dual flush toilets
- ✓ R-19 Insulation in exterior walls
- ✓ R-30 Insulation in attic
- ✓ Air sealing package
- ✓ Navien tankless water heaters
- ✓ Rainscreen weather barrier system
- ✓ Trane 16.00 SEER HVAC system with two-stage compressor (per plan)
- ✓ Independent zoning of each floor level for controlled comfort and efficiency
- ✓ MERV 10 - high performance media air filter
- ✓ Programmable thermostats
- ✓ Radiant barrier
- ✓ Low-E double pane energy efficient vinyl windows (per community)
- ✓ Energy Star® appliances
- ✓ Duct blaster and blower door testing
- ✓ Low VOC paint
- ✓ Hansgrohe plumbing package

## BUILDING PARTNERS



Continuing a policy for constant improvement, builder reserves the right to make modifications including changes, additions or deletions in the features, plans and specifications, and to substitute material of similar quality without notice or prior obligation. \*Features may be available only in specific plans and/or in specific communities. The availability of these features is subject to change without notice. Features on homes constructed prior to this printing may have different features. No representation or warranties either expressed or implied are made as to the accuracy of the information herein or with respect to the suitability, usability, feasibility, merchantability or conditions of any property herein described. Rev. 08-26-10 All Rights Reserved. ©InTown Homes 2025

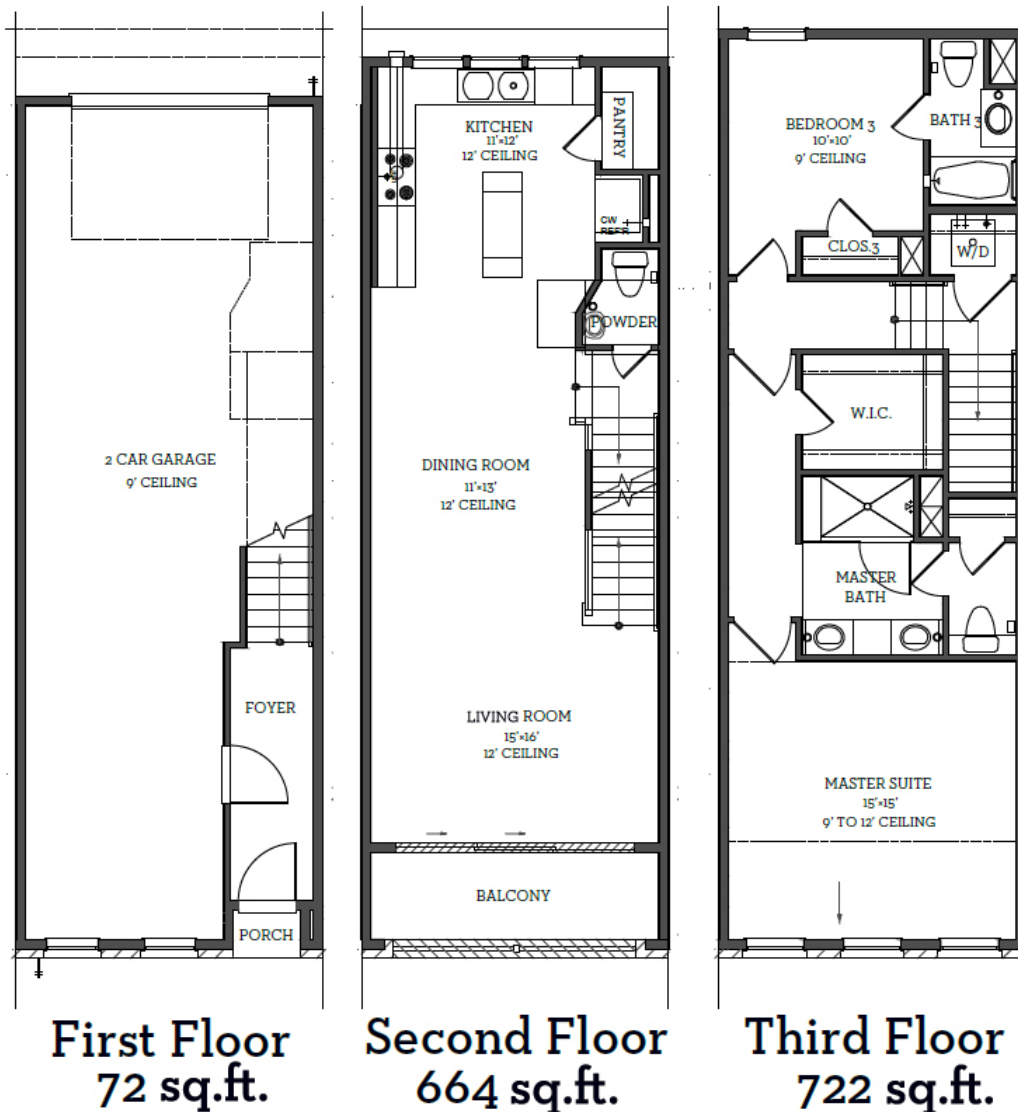


# 8728 Park Kolbe Lane



1,458 Sqft 2 Beds 2.5 Baths \$430,000

- ✓ Antique Brick Blend Courtyard Town Home
- ✓ Soaring 12 FT Tall Living Room Ceilings
- ✓ Show Stopping 10 FT Tall Tri-Paneled Glass Doors
- ✓ Wide Plank Wood Floors Throughout



All prices, features and plans are subject to change without notice. Square footage is approximate. No representation or warranties either expressed or implied are made as to the accuracy of the information herein or with respect to the suitability, usability, merchantability or conditions of any property herein described. Rev. 08-26-10 All Rights Reserved. ©InTown Homes 2025

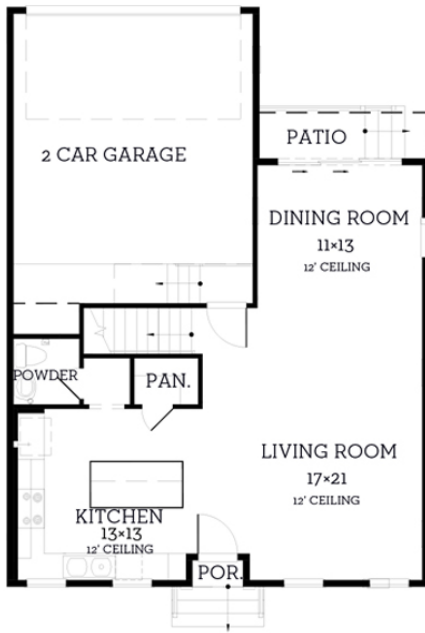


# 2616 Lake Kolbe Lane

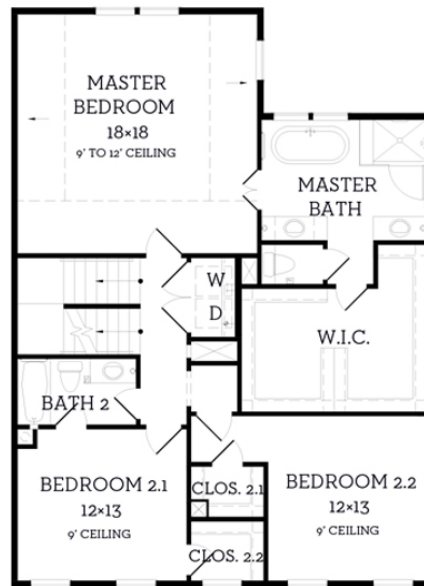


2,469 Sqft 4 Beds 3.5 Baths \$640,000

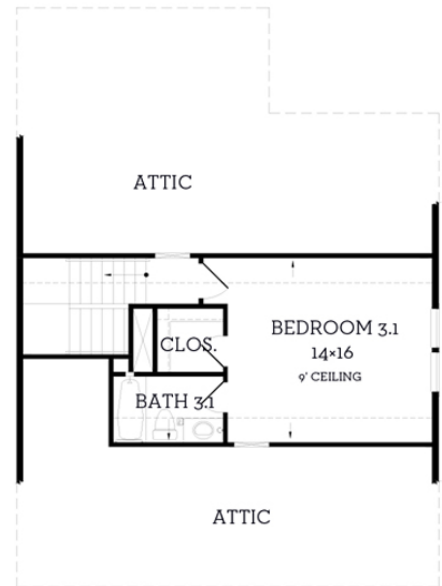
- ✓ 14x16 Bedroom 4/Game Room
- ✓ Fenced-in Back Patio/Yard
- ✓ Tri-Panel Glass Door
- ✓ Vaulted Ceilings



**First Floor**  
814 sq.ft.



**Second Floor**  
1305 sq.ft.



**Third Floor**  
350 sq.ft.

All prices, features and plans are subject to change without notice. Square footage is approximate. No representation or warranties either expressed or implied are made as to the accuracy of the information herein or with respect to the suitability, usability, merchantability or conditions of any property herein described. Rev. 08-26-10 All Rights Reserved. ©InTown Homes 2025

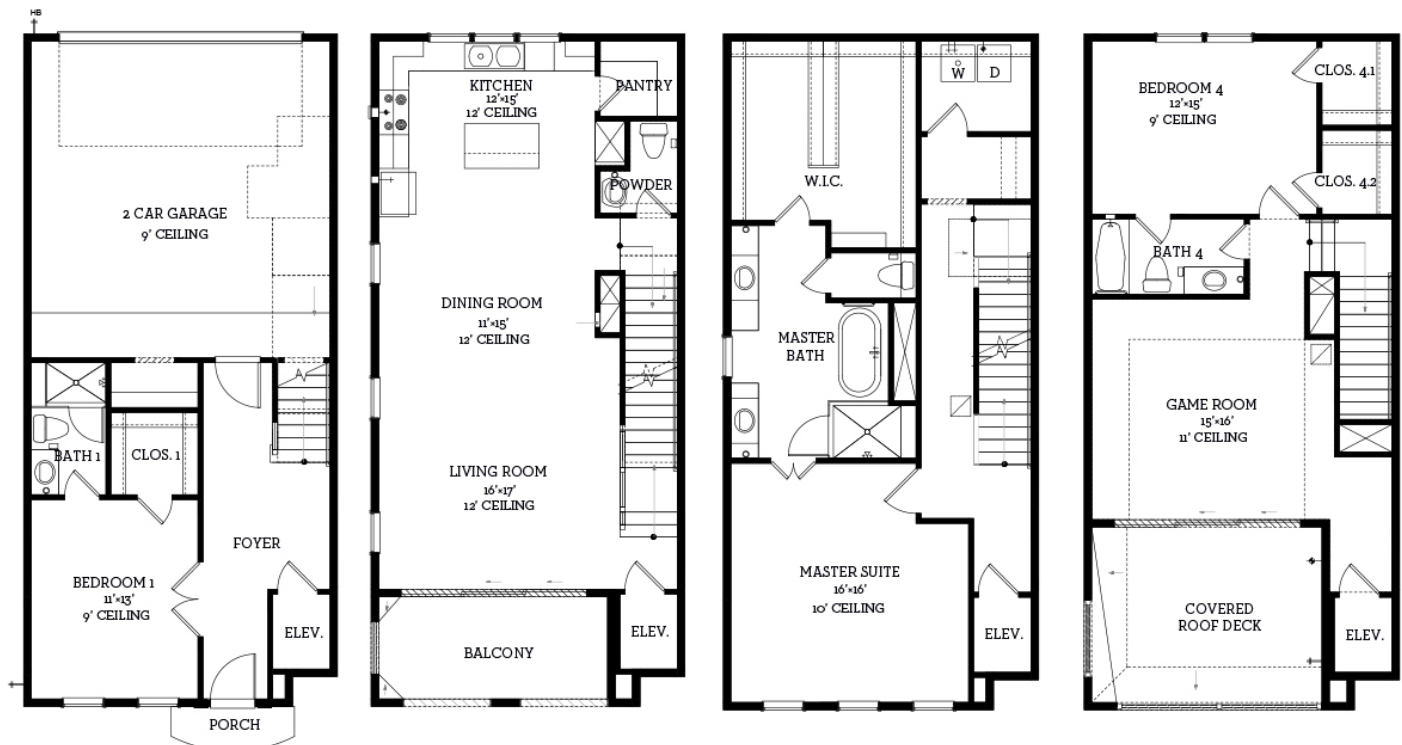


# 8711 Park Kolbe Lane



2,902 Sqft    3 Beds    3.5 Baths    \$790,000

- ✓ Elevator
- ✓ Lake Views
- ✓ Game Room
- ✓ Balcony and Roof Terrace



**First Floor**  
464 sq.ft.

**Second Floor**  
823 sq.ft.

**Third Floor**  
939 sq.ft.

**Fourth Floor**  
686 sq.ft.

All prices, features and plans are subject to change without notice. Square footage is approximate. No representation or warranties either expressed or implied are made as to the accuracy of the information herein or with respect to the suitability, usability, merchantability or conditions of any property herein described. Rev. 08-26-10 All Rights Reserved. ©InTown Homes 2025



