

# Tanglewood Hollow

1272 Wood Hollow Dr., 77057

Price range: \$700's - \$1.2M



- Gated community of 39 luxury homes
- Fantastic Tanglewood location within walking distance to Whole Foods, shopping, and fine dining
- Community pool
- All homes include installed elevators & wood flooring throughout, no carpet
- Walking distance to Second Baptist Church and close proximity to the Kinkaid School
- 2-3 car garage options available per plan
- Roof top terraces & 4th floor game rooms per plan

## For More Information

**Richard Fowler**  
Sales Consultant

 832-452-5060

 [Richardf@lovetthomes.com](mailto:Richardf@lovetthomes.com)

 [facebook.com/lovettshouston](https://facebook.com/lovettshouston)

 [instagram.com/lovettliving](https://instagram.com/lovettliving)

# Site Plan



Artist rendering only. Actual colors and plans may vary significantly.

# Location



# LOVETT

H O M E S

## Custom Features

### Elegant Exteriors

---

- Custom designs from Lovett Homes architects
- Eight-foot mahogany entry door
- Full gutters around entire home
- 2-car garage with ample storage space
- Professionally designed landscape package
- Slate style composition shingles
- Energy efficient, double pane windows with Low-E insulated glass
- Elegant exterior coach lighting

### Inspiring Interiors

---

- Wood flooring throughout, no carpet
- Wrought iron spindles
- Five-piece crown molding in main living area
- Wide base molding throughout home
- Eight-foot solid core interior doors
- Private residential elevator to all levels included
- Elegant stairways with hardwood treads
- Rounded sheetrock corners
- 12' ceilings in living areas

### Luxurious Master Suites

---

- Single ceiling molding in master bedroom
- Natural Stone tile floors and shower surrounds
- Oversized soaking tubs
- Oversized glass enclosed shower
- Dual vanities
- Framed mirrors
- Oversized walk-in closets **with many built-ins**

### Gourmet Kitchens

---

- Spacious gourmet kitchens
- Marble or quartz countertops
- 42-inch flat panel cabinets with decorative molding
- Miele, Fisher & Paykel, or Thermador kitchen appliance package, per plan
- Under mount sinks with garbage disposal
- Natural Stone backsplash
- **Insinkerator** 1/3 horsepower disposal
- Ice maker connection for refrigerator
- Recessed can lights with LED bulbs
- Under cabinet lighting

### Quality Construction

---

- Engineered, certified and inspected foundations
- Engineered flooring system
- Five-point extensive inspection process: structural, frame, exterior, air infiltration and quality assurance
- Fully installed alarm system with home automation
- RG6 digital coax cable for cable and internet
- CAT5 wiring for phone and home internet
- Pre-wire for surround sound in family room

Continuing a policy of constant improvement, builder reserves the right to make modifications including changes, additions or deletions in the features, plans and specifications, and to substitute material of similar quality without notice or prior obligation. \*Features may be available only in specific plans and/or in specific communities. The availability of these features is subject to change without notice. Features on homes constructed prior to this printing may have different features. No representation or warranties either expressed or implied are made as to the accuracy of the information herein or with respect to the suitability, usability, feasibility, merchantability or conditions of any property herein described. Rev. 08-26-10 All Rights Reserved. ©InTown Homes 2017



# LOVETT HOMES



## Eco-Hip™ for Sustainable Green Living

- Lovett Homes Eco-Hip™ program meets and exceeds the New International Energy Code Standard
- 2 x 6 exterior walls increase structural rigidity
- Strategically used engineered wood
- Dual flush toilets
- **R-19 Insulation** in exterior walls
- **R-38 Insulation** in attic
- Air sealing package
- Bosch or Rheem, tank less water heaters
- **DOW WEATHERMATE™** weather barrier system
- 16.00 SEER HVAC system with two-stage compressor
- MERV 10 - high performance media air filter
- Programmable thermostats
- Radiant barrier
- Low-E double pane energy efficient windows
- **Energy Star®** appliances
- Duct blaster and blower door testing
- Low VOC paint

## Building Partners



Continuing a policy of constant improvement, builder reserves the right to make modifications including changes, additions or deletions in the features, plans and specifications, and to substitute material of similar quality without notice or prior obligation. \*Features may be available only in specific plans and/or in specific communities. The availability of these features is subject to change without notice. Features on homes constructed prior to this printing may have different features. No representation or warranties either expressed or implied are made as to the accuracy of the information herein or with respect to the suitability, usability, feasibility, merchantability or conditions of any property herein described. Rev. 08-26-10 All Rights Reserved. ©InTown Homes 2017



# 1264 Wood Hollow Dr.

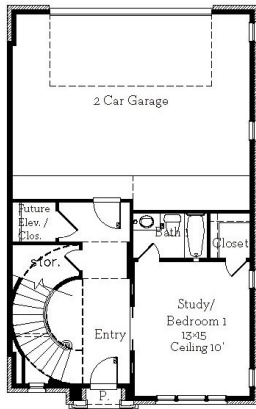
💰 \$1,136,900

🛏️ 3 Bedrooms

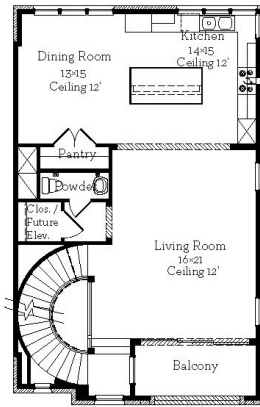
🚿 3.5 Bathrooms

🏠 3,716 sqft

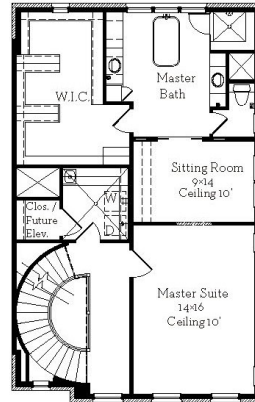
- Elegant spiral staircase
- High 12' ceilings in second floor
- Living room opens up to spacious balcony
- Enormous walk-in closet adjacent to Master Bath
- Covered roof deck with great views



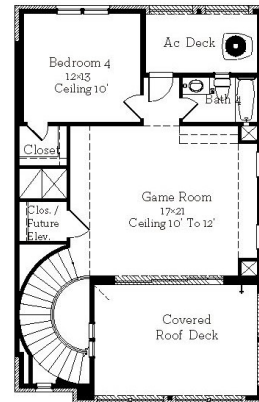
**First Floor**  
608 sqft



**Second Floor**  
1116 sqft



**Third Floor**  
1212 sqft



**Fourth Floor**  
780 sqft

All prices, features and plans are subject to change without notice. Square footage is approximate. No representation or warranties either expressed or implied are made as to the accuracy of the information herein or with respect to the suitability, usability, feasibility, merchantability or conditions of any property herein described. Rev. 08-26-10 All Rights Reserved. ©InTown Homes 2017



# 1312 Wood Hollow Dr.

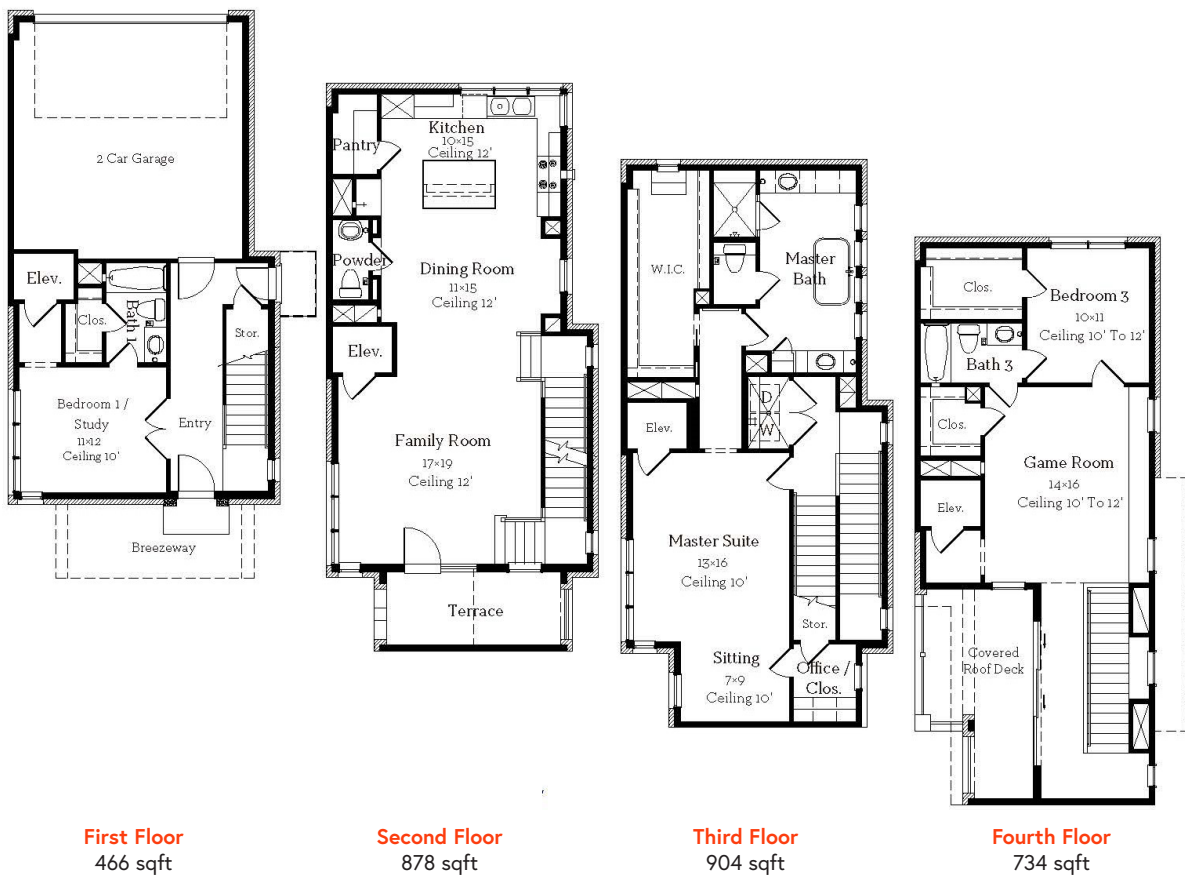
💰 \$782,000

🛏️ 3 Bedrooms

🚿 3.5 Bathrooms

🏠 2,982 sqft

- Small fenced in backyard
- End unit with wonderful views of the community pool
- Master bedroom with small study space and built-in desk
- Installed elevator to all 4 levels
- 2nd & 4th floor balconies



All prices, features and plans are subject to change without notice. Square footage is approximate. No representation or warranties either expressed or implied are made as to the accuracy of the information herein or with respect to the suitability, usability, feasibility, merchantability or conditions of any property herein described. Rev. 08-26-10 All Rights Reserved. ©InTown Homes 2017



# 1324 Wood Hollow Dr.

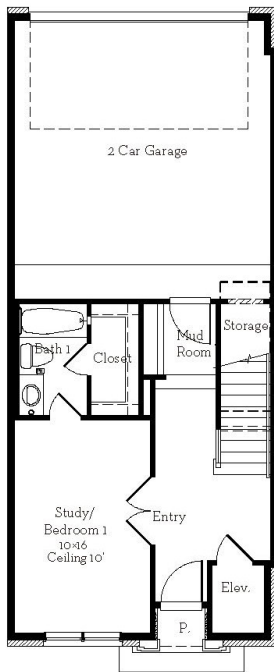
💰 \$775,000

🛏️ 3 Bedrooms

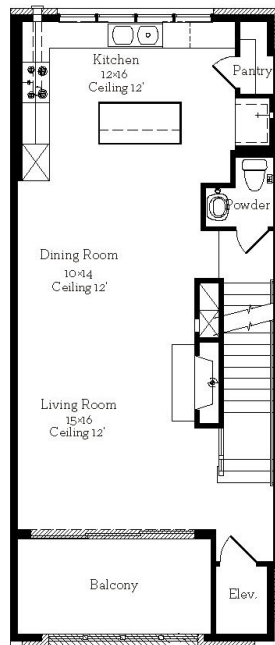
🚿 3.5 Bathrooms

🏠 2,975 sqft

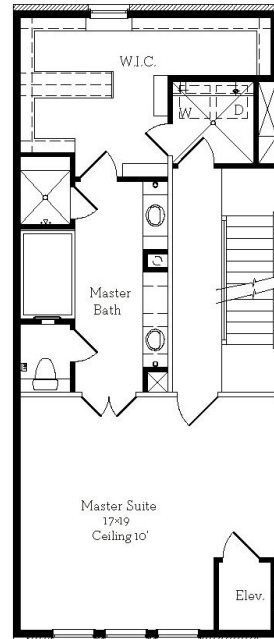
- Study / bedroom on first floor
- Mud room available through garage entrance
- Cozy fireplace in living room
- Elevator installed
- Master bedroom features a boutique-style giant walk in closet
- Covered roof deck with great views



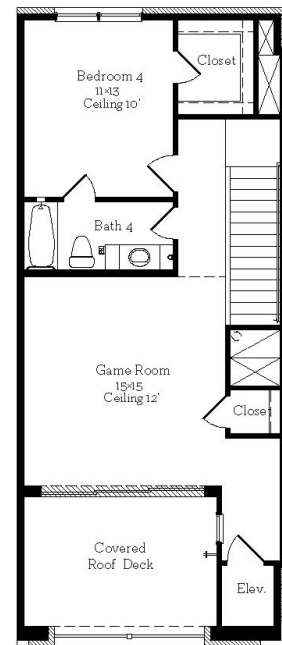
**First Floor**  
501 sqft



**Second Floor**  
822 sqft



**Third Floor**  
940 sqft



**Fourth Floor**  
712 sqft

All prices, features and plans are subject to change without notice. Square footage is approximate. No representation or warranties either expressed or implied are made as to the accuracy of the information herein or with respect to the suitability, usability, feasibility, merchantability or conditions of any property herein described. Rev. 08-26-10 All Rights Reserved. ©InTown Homes 2017



