



# INTOWN

— HOMES —

5500 Sendero Hills Pkwy

2,630 sq.ft.

3 bedrooms / 2.5 baths



All prices, features and plans are subject to change without notice. Square footage is approximate. No representation or warranties either expressed or implied. Are made as to the accuracy of the information herein or with respect to the suitability, usability, merchantability or conditions of any property herein described. All rights Reserved. InTownHomes 2014





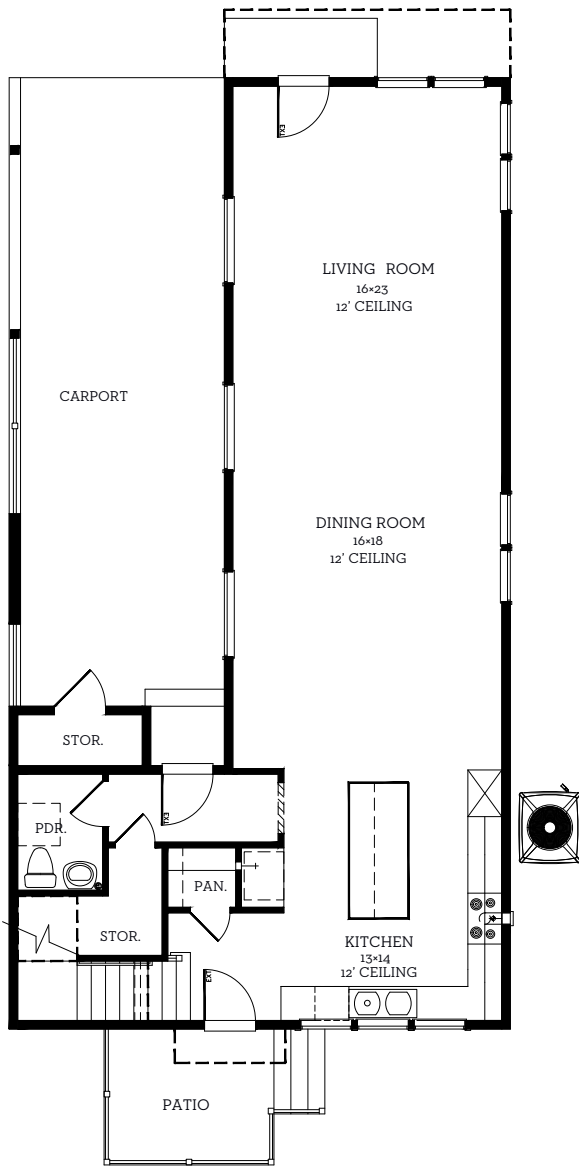
# INTOWN

— HOMES —

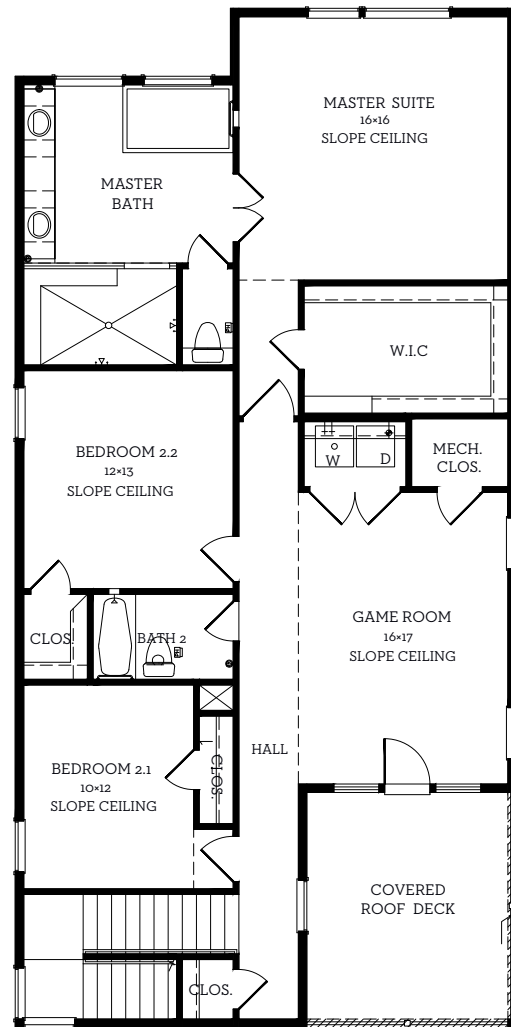
5500 Sendero Hills Pkwy

2,630 sq.ft.

3 bedrooms / 2.5 baths



**First Floor**  
1168 sq.ft



**Second Floor**  
1462 sq.ft

All prices, features and plans are subject to change without notice. Square footage is approximate. No representation or warranties either expressed or implied Are made as to the accuracy of the information herein or with respect to the suitability, usability, merchantability or conditions of any property herein described. All rights Reserved. InTownHomes 2014

