



INTOWN

— HOMES —

5001 Childers Path

2,090 sq.ft.

3 bedrooms / 3.5 baths



[INTOWN-HOMES.COM](https://intown-homes.com)



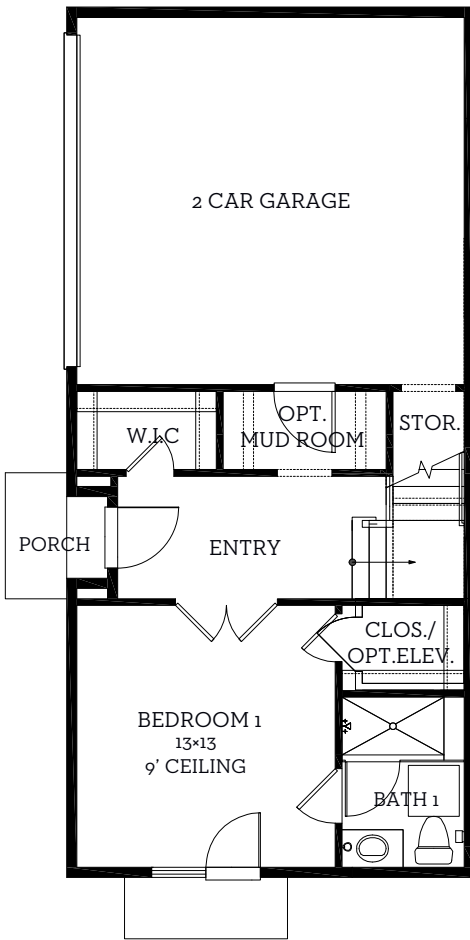
INTOWN

— HOMES —

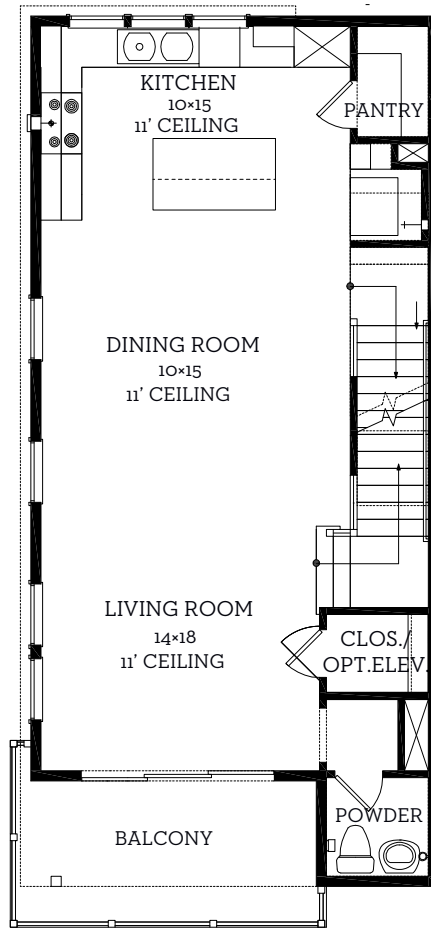
5001 Childers Path

2,090 sq.ft.

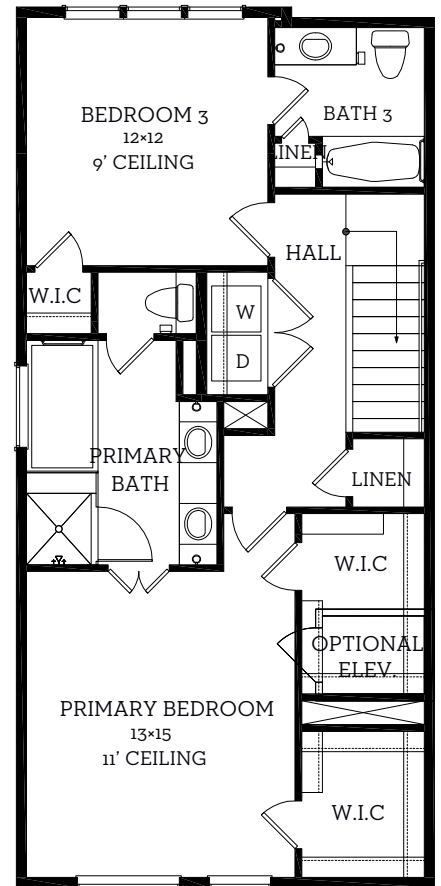
3 bedrooms / 3.5 baths



First Floor
475 sq.ft



Second Floor
781 sq.ft



Third Floor
834 sq.ft