



# INTOWN

— HOMES —

CARROLL ROW HOUSE 1

2,543 sq.ft.

3 bedrooms / 3.5 baths



All prices, features and plans are subject to change without notice. Square footage is approximate. No representation or warranties either expressed or implied. Are made as to the accuracy of the information herein or with respect to the suitability, usability, merchantability or conditions of any property herein described. All rights Reserved. InTownHomes 2019



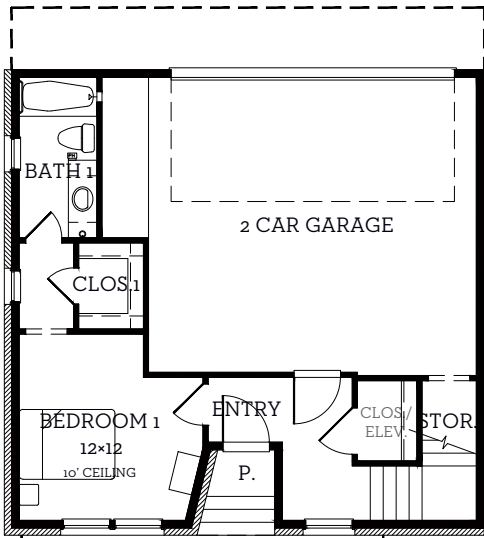


# INTOWN

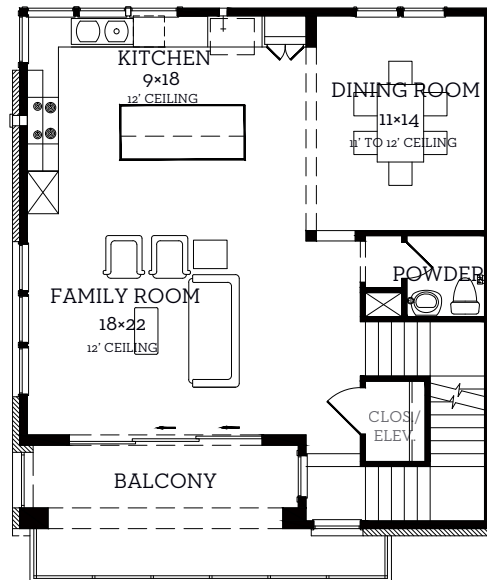
— HOMES —

## CARROLL ROW HOUSE 1

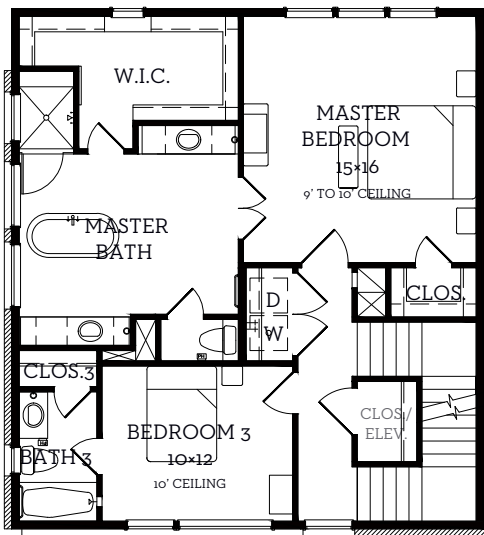
2,543 sq.ft. 3 bedrooms / 3.5 baths



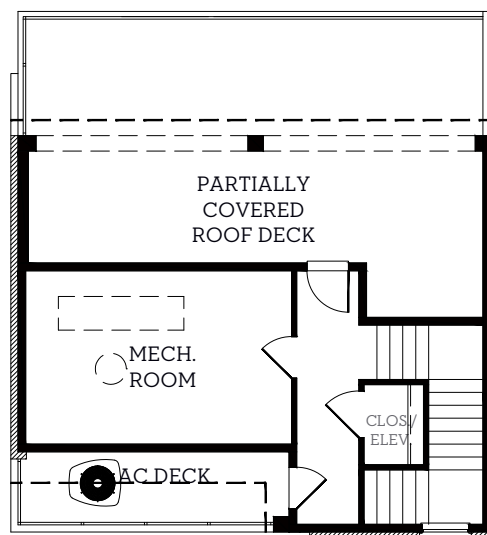
**First Floor**  
448 sq.ft.



**Second Floor**  
944 sq.ft.



**Third Floor**  
1043 sq.ft.



**Third Floor**  
108 sq.ft.

All prices, features and plans are subject to change without notice. Square footage is approximate. No representation or warranties either expressed or implied. Are made as to the accuracy of the information herein or with respect to the suitability, usability, merchantability or conditions of any property herein described. All rights Reserved. InTownHomes 2019

