



INTOWN

— HOMES —

5440 Tomlinson Dr.

2,207 sq.ft.

3 bedrooms / 3.5 baths



All prices, features and plans are subject to change without notice. Square footage is approximate. No representation or warranties either expressed or implied Are made as to the accuracy of the information herein or with respect to the suitability, usability, merchantability or conditions of any property herein described. All rights Reserved. InTownHomes 2023





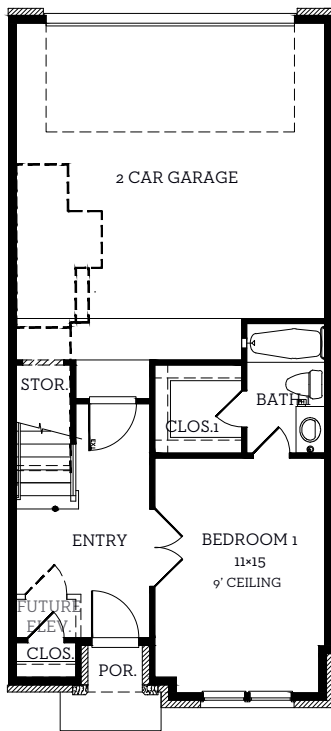
INTOWN

— HOMES —

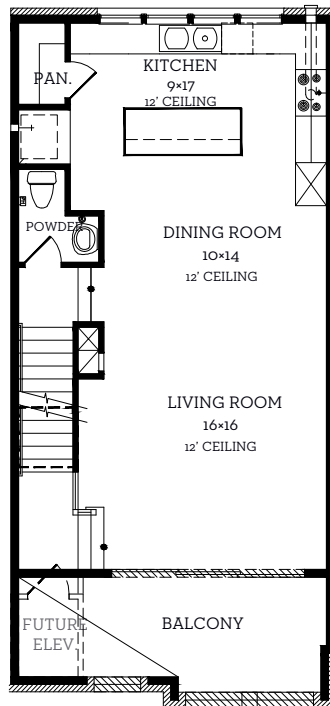
5440 Tomlinson Dr.

2,207 sq.ft.

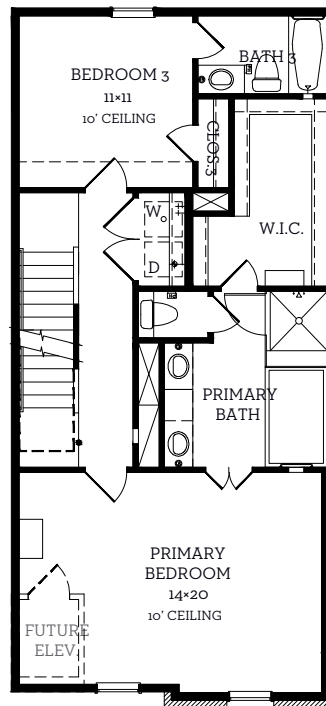
3 bedrooms / 3.5 baths



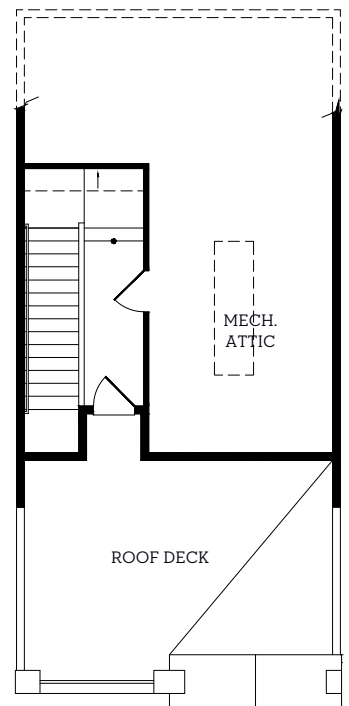
First Floor
453 sq.ft.



Second Floor
769 sq.ft.



Third Floor
935 sq.ft.



Fourth Floor
50 sq.ft.