



INTOWN

— HOMES —

281 Pullman Ct

1,916 sq.ft.

3 bedrooms / 2.5 baths



All prices, features and plans are subject to change without notice. Square footage is approximate. No representation or warranties either expressed or implied. Are made as to the accuracy of the information herein or with respect to the suitability, usability, merchantability or conditions of any property herein described. All rights Reserved. InTownHomes 2022





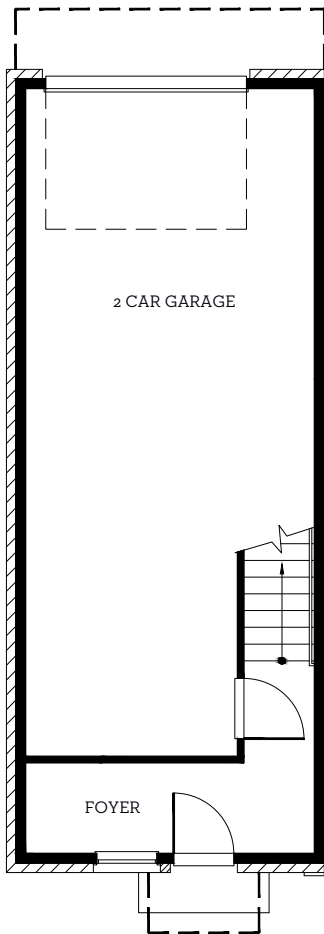
INTOWN

— HOMES —

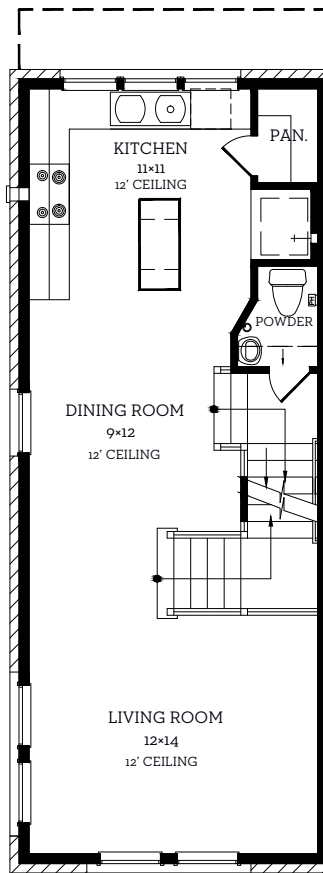
281 Pullman Ct

1,916 sq.ft.

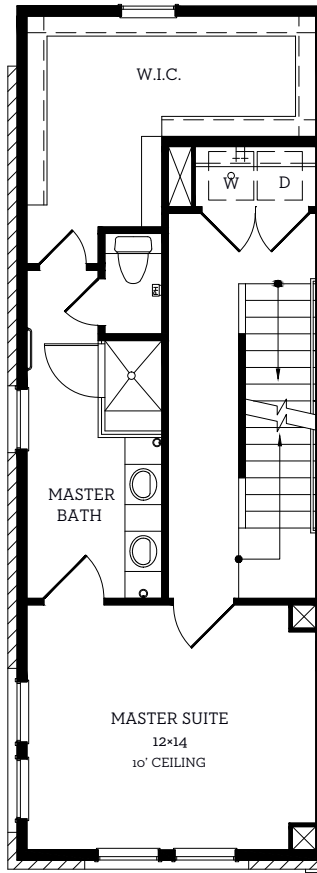
3 bedrooms / 2.5 baths



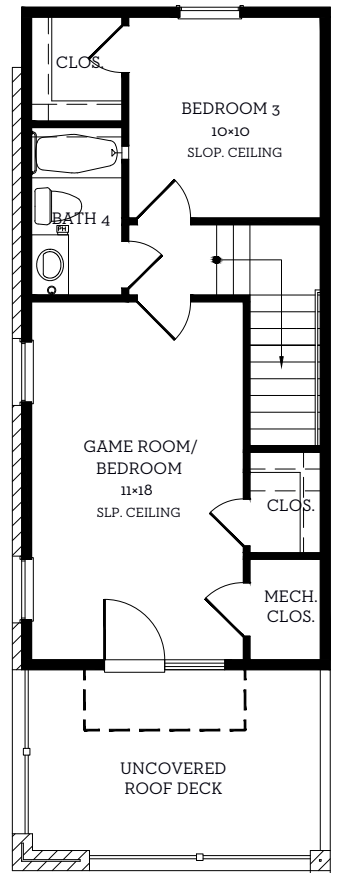
First Floor
114 sq.ft.



Second Floor
640 sq.ft.



Third Floor
687 sq.ft.



Fourth Floor
475 sq.ft.