

# Sizing Charts

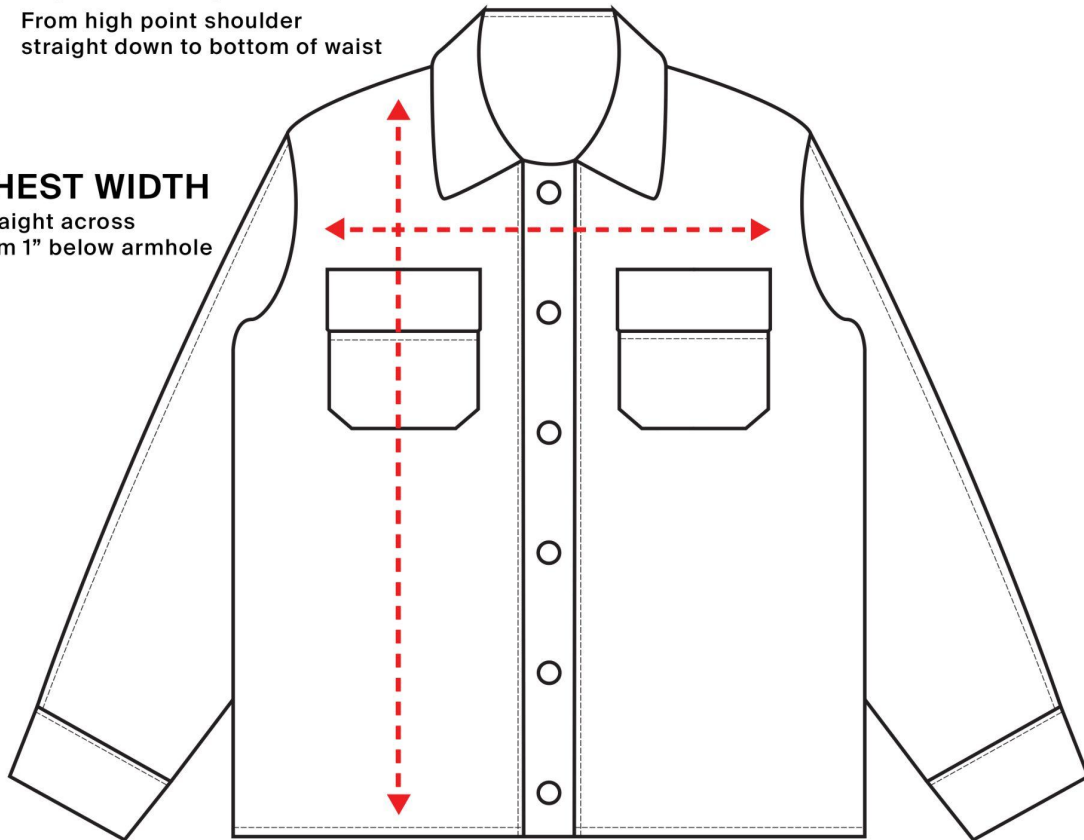
How to read the sizing charts:

## BODY LENGTH

From high point shoulder  
straight down to bottom of waist

## CHEST WIDTH

Straight across  
from 1" below armhole



## Jacket Sizing

	XS	S	M	L	XL	2XL
Body Length	19 ¼	20	20 ¾	21 ½	22 ¼	23
Chest Width (Laid Flat)	22	23	24	25	26	27
Sleeve Length	28 ¾	29 ½	30 ¼	31	31 ¾	32 ½

Product measurements may vary by up to 2" (5 cm).