

Sizing Charts

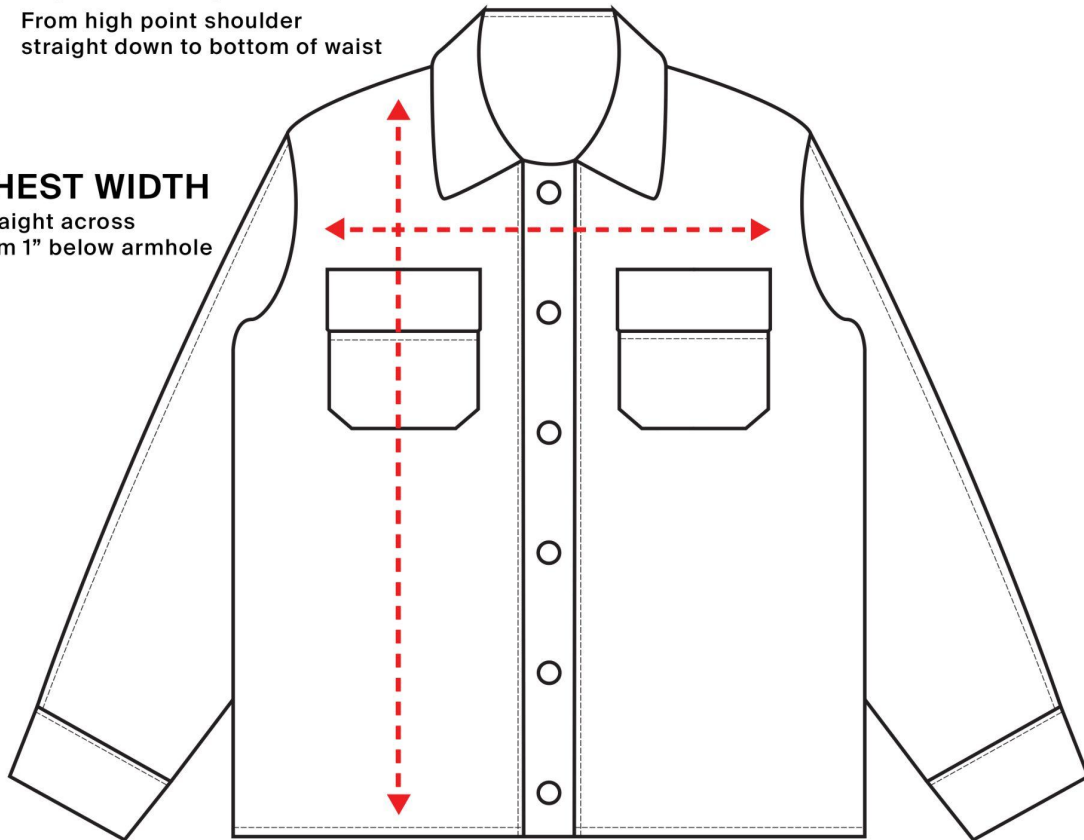
How to read the sizing charts:

BODY LENGTH

From high point shoulder
straight down to bottom of waist

CHEST WIDTH

Straight across
from 1" below armhole



Jacket Sizing

	XS	S	M	L	XL	2XL	3XL
½ Chest Width	19 ³ / ₄	20 ¹ / ₂	21 ¹ / ₄	22 ⁷ / ₈	24 ³ / ₈	26	27 ¹ / ₂
Length	25 ⁵ / ₈	27 ¹ / ₈	27 ¹ / ₈	28 ³ / ₈	28 ³ / ₈	29 ¹ / ₂	29 ¹ / ₂
Sleeve Length	21 ⁷ / ₈	22 ¹ / ₂	23	23 ⁷ / ₈	24	24 ¹ / ₄	24 ³ / ₈

Product measurements may vary by up to 2" (5 cm).